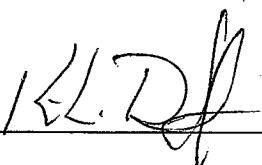
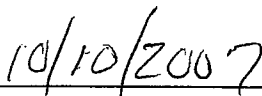
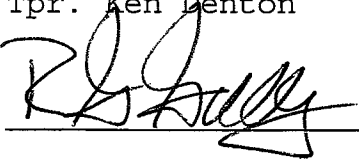



## Notice of Simulator Solution File Review

At the request of the State Toxicologist a review of the following simulator solution records has been accomplished. The following file consists of simulator solution analyses performed and completed by the State Toxicology Laboratory for a specific batch number. The file contains the simulator solution data entry form along with a file review record and the chromatograms generated by the Toxicology Laboratory during the analyses of the solutions. This file has been reviewed by Tpr. Ken Denton and Mr. Rod Gullberg for accuracy and completeness. Where computations regarding simulator solution values have been found to be incorrect, the corrected values have been written in by Mr. Rod Gullberg along with initials and date. The corrected values were then evaluated to ensure that the solution still conformed to those standards established by the State Toxicologist.

Where computation values changed for a specific batch number, the analysts employed by the State Toxicology Laboratory were asked to review the revisions, ensure the solution complied with the criteria established by the State Toxicologist and then re-sign their affidavit. Their signature will appear on their original affidavit along with a statement regarding their review of the results.

Where a dating error occurred that analyst will have made the correction on the original data form including their initials and date and then re-signed their original affidavit.

	
Tpr. Ken Denton	Date
	
Rod G. Gullberg	Date

Washington State Toxicology Laboratory

Simulator Solution Data Entry Review Form

Reviewer KEN DENTON / ROS GULLBERG Date 10-1-07  
Location TOX LAB SEATTLE Batch Number 06035

Form Review Criteria

Preparation date precedes all analysis dates: Okay \_\_\_ Not Okay

Data entry corresponds to all chromatograms: Okay  Not Okay \_\_\_

All signatures present: Okay  Not Okay \_\_\_

Computations:

Avg. solution concentration: Correct  Not Correct \_\_\_

Standard deviation: Correct  Not Correct \_\_\_

Range: Correct  Not Correct \_\_\_

Precision: Correct  Not Correct \_\_\_

Equivalent vapor concent.: Correct  Not Correct \_\_\_

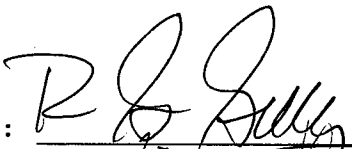

External Control Information  
(lot # and future date): Correct  Not Correct \_\_\_

Complies with accuracy and precision requirements established by the  
State Toxicologist: Yes  No \_\_\_

Corrections Necessary:

DATE OF PREPARATION INCORRECT

Comments:

Reviewer Signature:  Date: 10-1-07  
Reviewer Signature:  Date: 10-1-07

**WASHINGTON STATE TOXICOLOGY LABORATORY**  
 FORENSIC LABORATORY SERVICES BUREAU  
 WASHINGTON STATE PATROL  
 2203 AIRPORT WAY S, SUITE 360  
 SEATTLE, WASHINGTON 98134-2027  
 (206) 262-6100 FAX (206) 262-6145


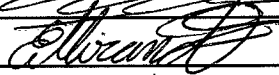
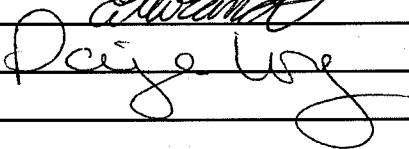
Preparation and certification of **0.15** g/210L      Quality Assurance solution 9.1.06  
 Batch number **06035**      Date: ~~9/5/2006~~  
 Preparation: 42.3 mL of absolute ethyl alcohol diluted to 18 Liters with water AC 10.9.07  
 Concentration of ethanol (g/100mL) measured by gas chromatography:

	Anal 1	Anal 2	Anal 3	Anal 4	Anal 5	Anal 6	Anal 7	Anal 8	Anal 9	Anal 10	Anal 11	Anal 12	Anal 13	Anal 14	Anal 15	Anal 16
1	0.184	0.189	0.188													
2	0.183	0.190	0.188													
3	0.184	0.190	0.188													
4	0.184	0.190	0.188													
5	0.185	0.189	0.188													
Ctrl	0.099	0.102	0.098													

**External Control:**  
 Lot #: A041837    Exp date: 4/10  
 Target concentration: 0.10 g/100mL

**Statistics:**  
 Avg. solution concent.: 0.1872 g/100 mL  
 SD: 0.00248  
 Range (3xSD): 0.1797 to 0.1947  
 Precision CV (%): 1.3270 %

**Equivalent vapor concent.:** 0.1522 g/210L

Analyst	Name	Signature	Date
1	Brian Capron		09/01/2006
2	Estuardo J. Miranda		09/05/2006
3	Paige Long		09/06/2006
4			
5			
6			
7			
8			
9			
10			
11			
12			
13			
14			
15			
16			

Prepared by: Brian Capron according to the approved protocol



STATE OF WASHINGTON  
WASHINGTON STATE PATROL

WASHINGTON STATE TOXICOLOGY LABORATORY

2203 Airport Way South, Suite 360•Seattle, Washington 98134-2927•(206) 262-6100•FAX (206) 262-6145

DATAMASTER QUALITY ASSURANCE SOLUTION  
CERTIFICATION

I, Brian Capron, do certify under penalty of perjury that:

I am employed by the Washington State Toxicology Laboratory, and a part of my responsibilities includes preparing and testing the alcohol solutions for the DataMaster breath test instrument.

I possess the following qualifications: BS degree in Biology and nine years of experience in forensic toxicology.

The quality assurance solution, Lot Number 06035, was prepared in the Washington State Toxicology Laboratory on ~~9/5/2006~~<sup>9.1.06</sup>. I examined and tested this solution. The mean concentration of the alcohol was 0.1872 grams per 100ml.

*BC* 10.9.07

Dated: 10/11/2006  
Seattle, WA

*Brian Capron*

Brian Capron  
Forensic Toxicologist

BC/ks  
BCQA

A review of solution batch records was recently completed. After this review, I checked the file for this solution and reviewed all changes that were made. I found that the solution still conformed to those standards established by the State Toxicologist for the certification of simulator solutions.

*Brian Capron*  
10.9.07





STATE OF WASHINGTON  
WASHINGTON STATE PATROL

WASHINGTON STATE TOXICOLOGY LABORATORY

2203 Airport Way South, Suite 360•Seattle, Washington 98134-2927•(206) 262-6100•FAX (206) 262-6145

DATAMASTER QUALITY ASSURANCE SOLUTION  
CERTIFICATION

I, Estuardo J. Miranda, do certify under penalty of perjury that:

I am employed by the Washington State Toxicology Laboratory, and a part of my responsibilities includes preparing and testing the alcohol solutions for the DataMaster breath test instrument.

I possess the following qualifications: Bachelor of Science in Chemistry, Master of Science in Zoology, eight years experience in biochemical research and eight years experience in Forensic Toxicology.

The quality assurance solution, Lot Number 06035, was prepared in the Washington State Toxicology Laboratory on <sup>9/5/2006</sup> 9/5/2006. I examined and tested this solution. The mean concentration of the alcohol was 0.1872 grams per 100ml. <sub>9/11/2006</sub>  
EM 10-10-2007

Dated: 10/11/2006  
Seattle, WA

Estuardo J. Miranda  
Forensic Toxicologist

EM/ks  
EMQA

A review of solution batch records was recently completed. After this review, I checked the file for this solution and reviewed all changes that were made. I found that the solution still conformed to those standards established by the State Toxicologist for the certification of simulator solutions.

  
10-10-2007



STATE OF WASHINGTON  
WASHINGTON STATE PATROL

WASHINGTON STATE TOXICOLOGY LABORATORY

2203 Airport Way South, Suite 360•Seattle, Washington 98134-2927•(206) 262-6100•FAX (206) 262-6145

DATAMASTER QUALITY ASSURANCE SOLUTION  
CERTIFICATION

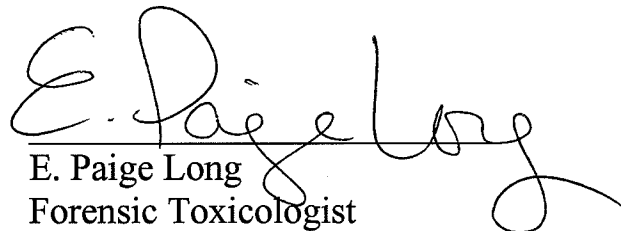
I, E. Paige Long, do certify under penalty of perjury that:

I am employed by the Washington State Toxicology Laboratory, and a part of my responsibilities includes preparing and testing the alcohol solutions for the DataMaster breath test instrument.

I possess the following qualifications: BS degree in Biology, and MS degree in Forensic Science.

The quality assurance solution, Lot Number 06035, was prepared in the Washington State Toxicology Laboratory on 9/5/2006. I examined and tested this solution. The mean concentration of the alcohol was 0.1872 grams per 100ml.

Dated: 10/11/2006  
Seattle, WA

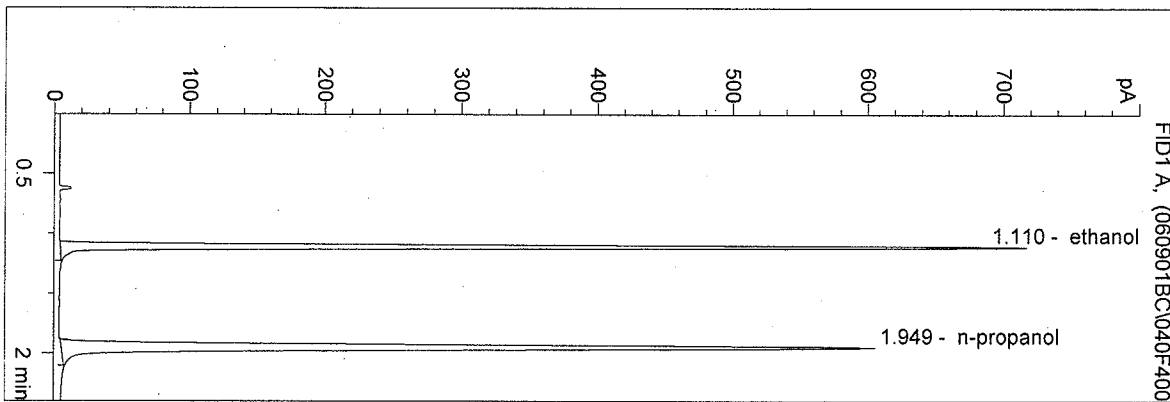
  
E. Paige Long  
Forensic Toxicologist

EPL/ks  
PLQA

D:\HPCHEM\1\METHODS\BLDALCO2.M  
 9/1/2006 2:26:26 PM  
 Instrument 5  
 DB-ALC2

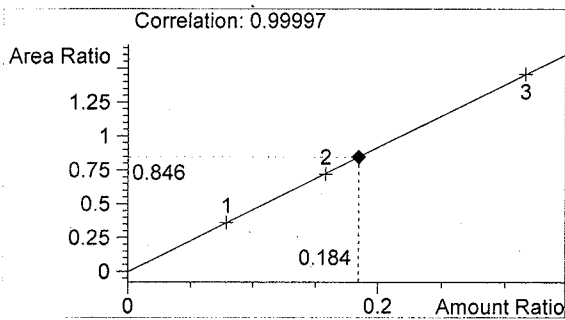
06035  
 bcapron

vial # 40

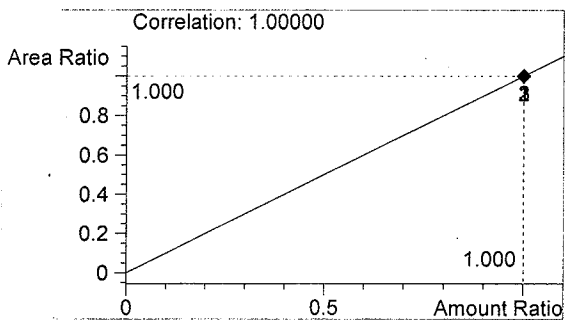


#	Compound	Area	RT
1	ethanol	1505	1.110
2	n-propanol	1780	1.949

Totals:



ethanol 0.184 g/100ml

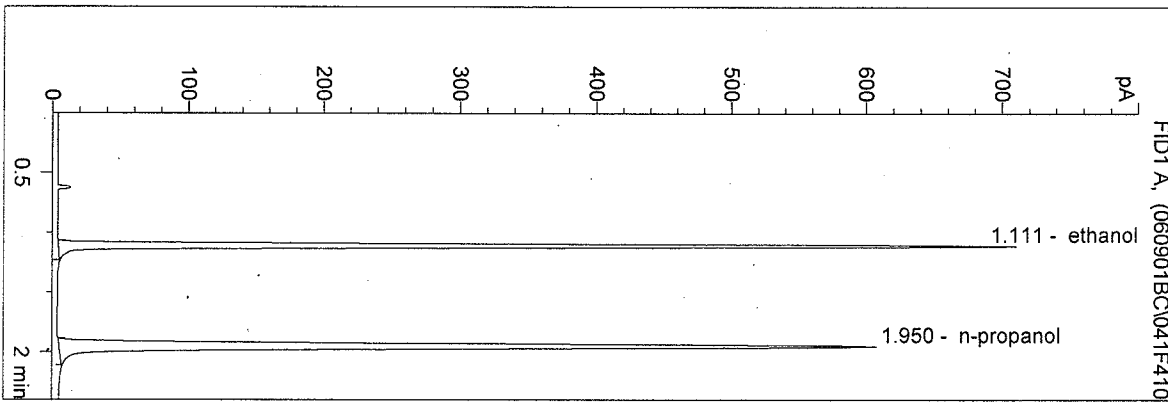


n-propanol 1.000 g/100ml

D:\HPCHEM\1\METHODS\BLDALCO2.M  
 9/1/2006 2:30:12 PM  
 Instrument 5  
 DB-ALC2

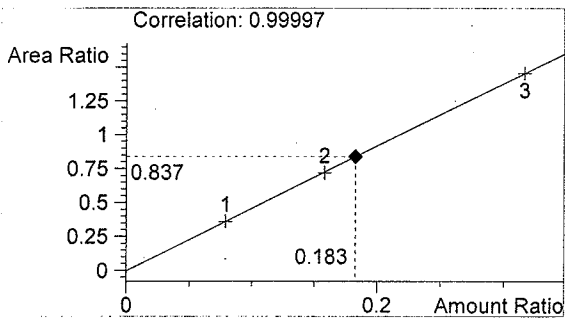
06035  
 bcapron

vial # 41

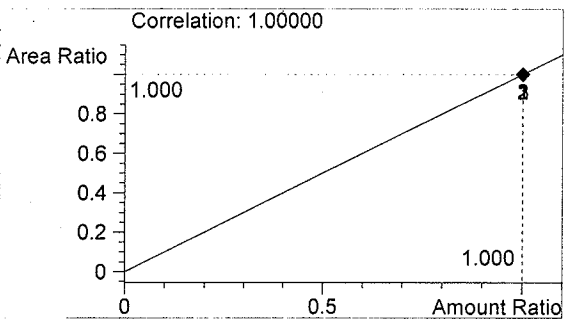


#	Compound	Area	RT
1	ethanol	1501	1.111
2	n-propanol	1792	1.950

Totals:



ethanol 0.183 g/100ml



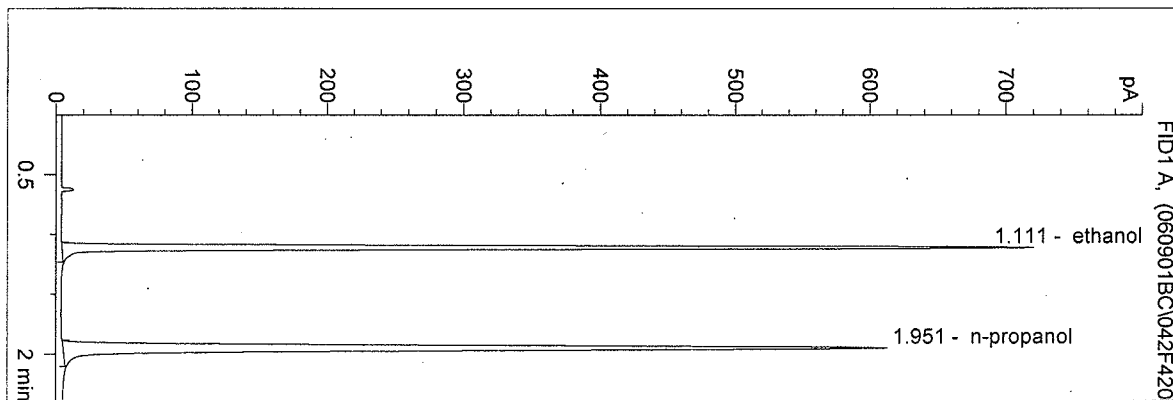
n-propanol 1.000 g/100ml



D:\HPCHEM\1\METHODS\BLDALCO2.M  
 9/1/2006 2:33:38 PM  
 Instrument 5  
 DB-ALC2

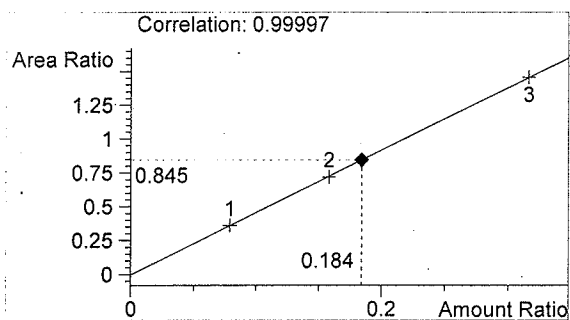
06035  
 bcapron

vial # 42

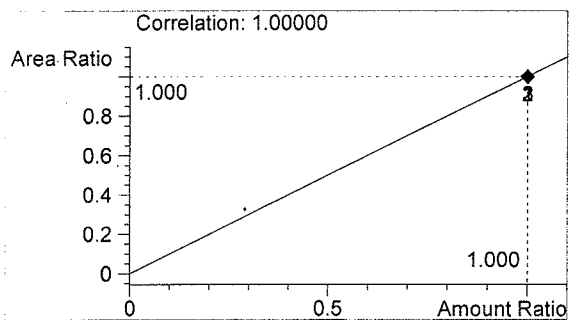


#	Compound	Area	RT
1	ethanol	1524	1.111
2	n-propanol	1804	1.951

Totals:



ethanol 0.184 g/100ml

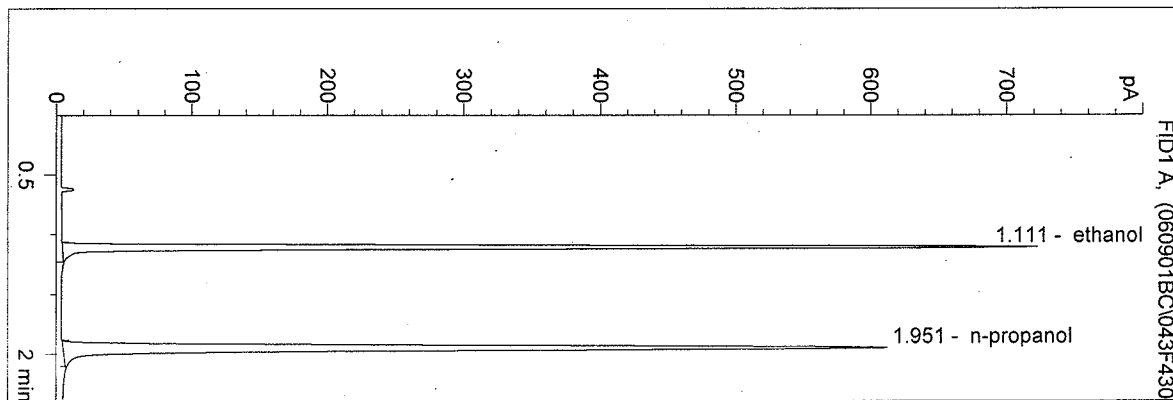


n-propanol 1.000 g/100ml

D:\HPCHEM\1\METHODS\BLDALCO2.M  
 9/1/2006 2:38:20 PM  
 Instrument 5  
 DB-ALC2

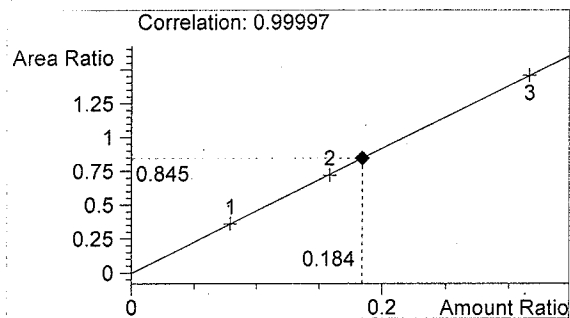
06035  
 bcapron

vial # 43

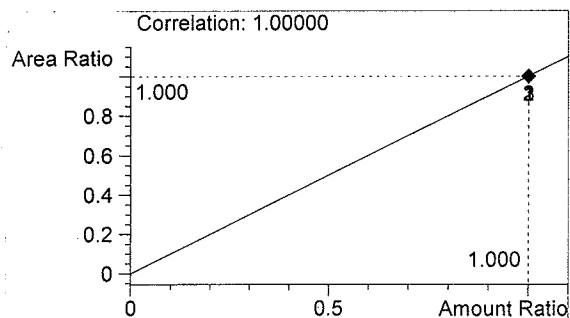


#	Compound	Area	RT
1	ethanol	1524	1.111
2	n-propanol	1803	1.951

Totals:



ethanol 0.184 g/100ml

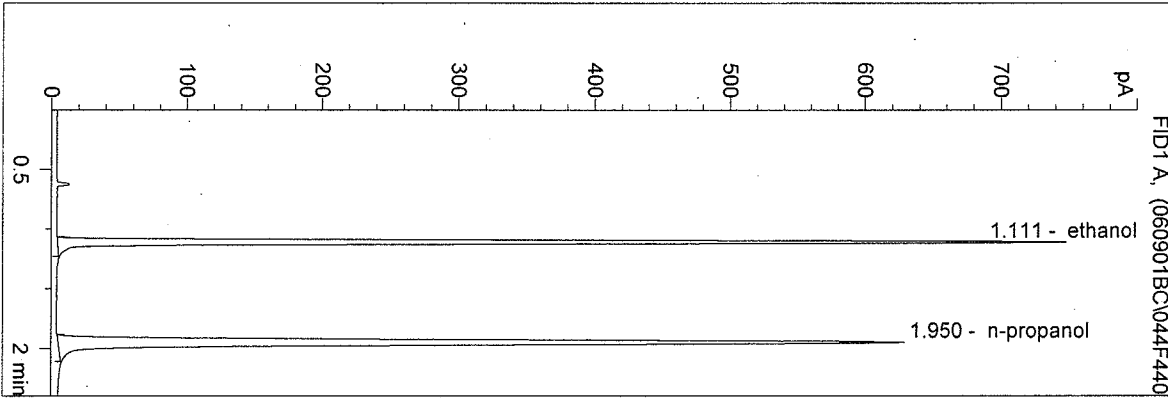


n-propanol 1.000 g/100ml

D:\HPCHEM\1\METHODS\BLDALCO2.M  
 9/1/2006 2:42:04 PM  
 Instrument 5  
 DB-ALC2

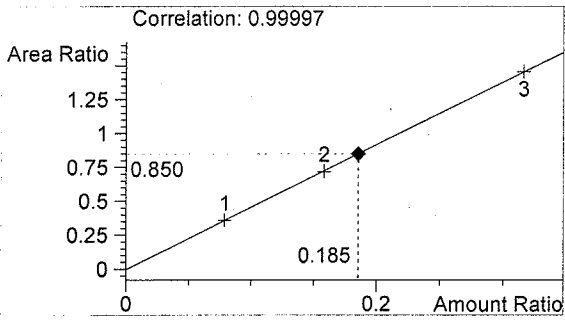
06035  
 bcapron

vial # 44

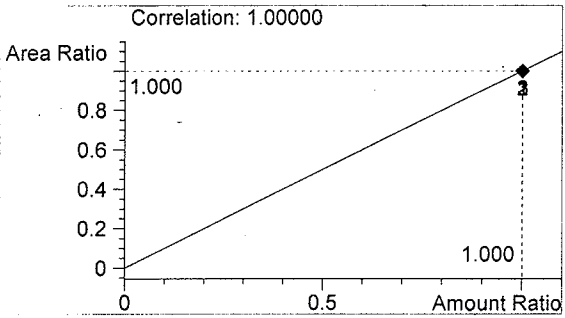


#	Compound	Area	RT
1	ethanol	1575	1.111
2	n-propanol	1853	1.950

Totals:



ethanol 0.185 g/100ml

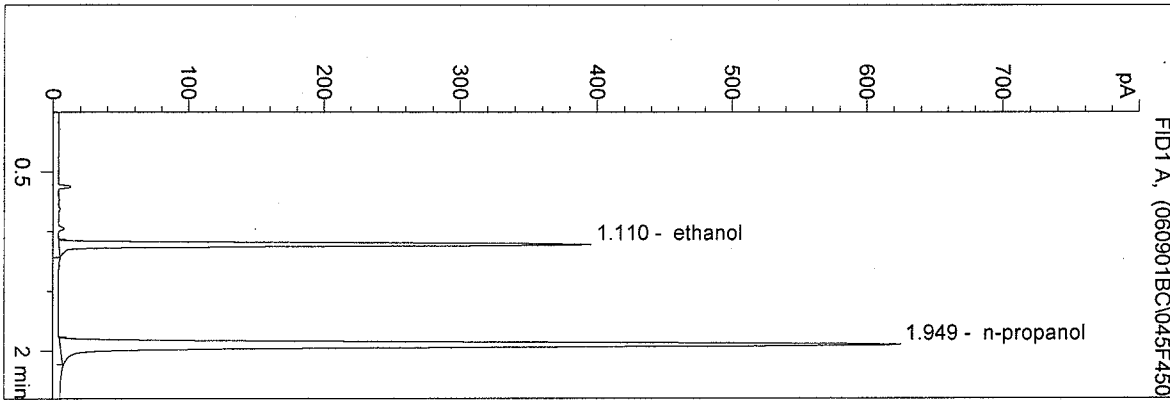


n-propanol 1.000 g/100ml

D:\HPCHEM\1\METHODS\BLDALCO2.M  
 9/1/2006 2:45:38 PM  
 Instrument 5  
 DB-ALC2

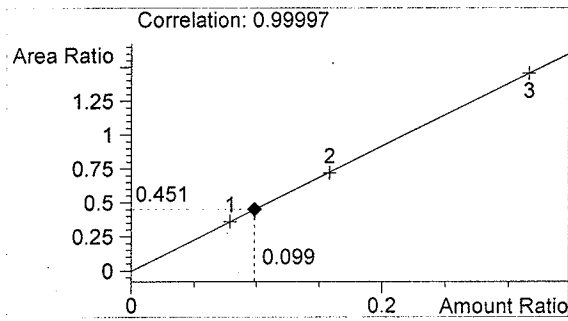
0.10 control bc  
 bcapron

vial # 45

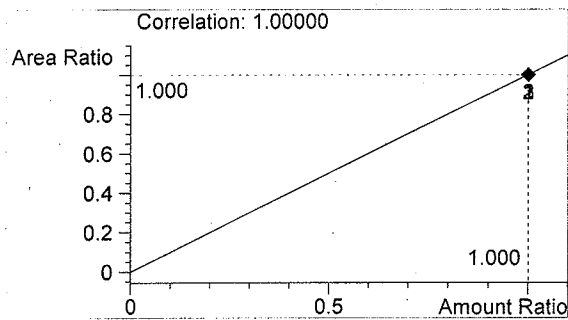


#	Compound	Area	RT
1	ethanol	830	1.110
2	n-propanol	1842	1.949

Totals:



ethanol 0.099 g/100ml

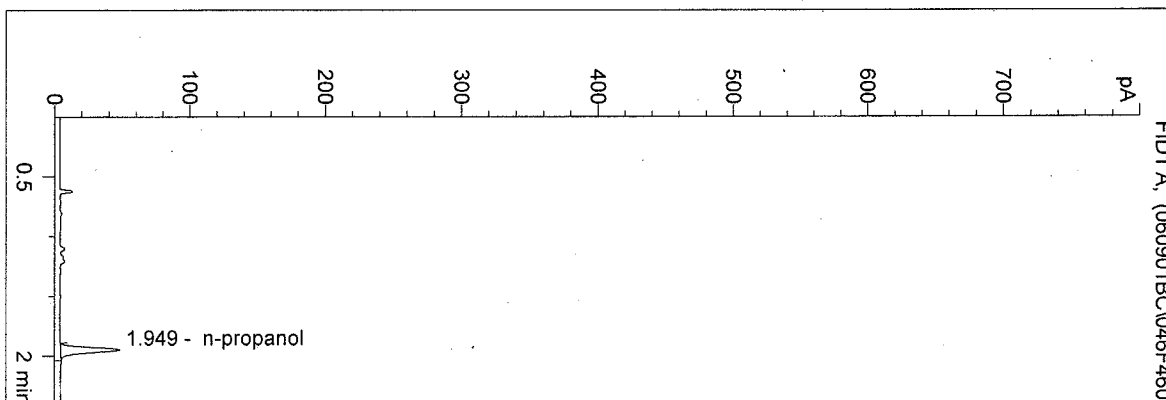


n-propanol 1.000 g/100ml

D:\HPCHEM\1\METHODS\BLDALCO2.M  
 9/1/2006 2:50:14 PM  
 Instrument 5  
 DB-ALC2

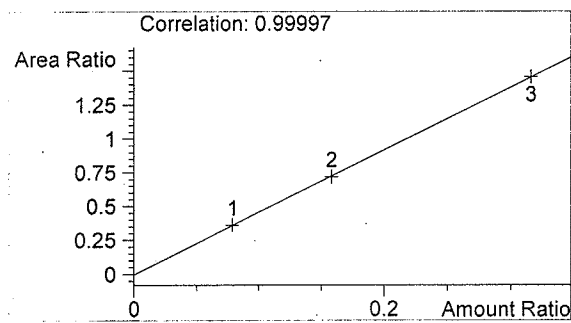
blank  
 bcapron

vial # 46

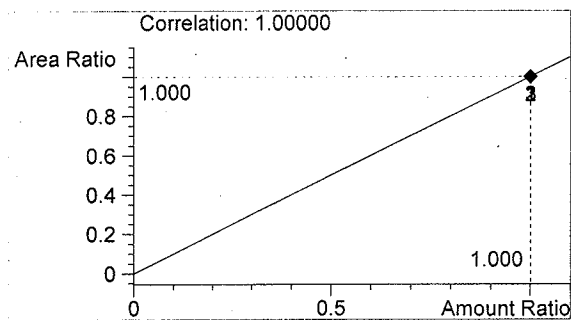


#	Compound	Area	RT
1	ethanol	0	0.000
2	n-propanol	131	1.949

Totals:



ethanol 0.000 g/100ml



n-propanol 1.000 g/100ml

Sequence Parameters:

Operator: Estuardo J. Miranda  
 Data File Naming: Auto  
 Data Directory: D:\HPCHEM\1\DATA\  
 Data Subdirectory: 060905JM  
 Part of Methods to run: According to Runtime Checklist  
 Barcode Reader: not used  
 Shutdown Cmd/Macro: none  
 Sequence Comment:

Sequence Table (Front Injector):

Method and Injection Info Part:

Line	Location	SampleName	Method	Inj	SampleType	InjVolume	DataFile
1	Vial 1	0.100 Control EM	BLDALCO	1	Ctrl Samp		
2	Vial 2	Blank	BLDALCO	1	Sample		
3	Vial 3	QA 06035-1	BLDALCO	1	Sample		
4	Vial 4	QA 06035-2	BLDALCO	1	Sample		
5	Vial 5	QA 06035-3	BLDALCO	1	Sample		
6	Vial 6	QA 06035-4	BLDALCO	1	Sample		
7	Vial 7	QA 06035-5	BLDALCO	1	Sample		
8	Vial 8	0.100 Control EM	BLDALCO	1	Ctrl Samp		
9	Vial 9	Blank	BLDALCO	1	Sample		

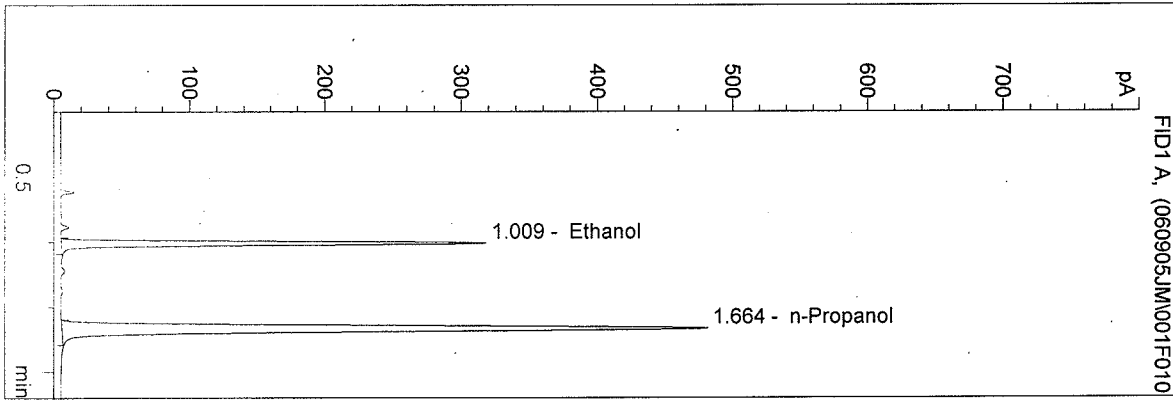
Sequence Table (Back Injector):

No entries - empty table!

D:\HPCHEM\1\METHODS\BLDALCO.M  
 9/5/2006 4:24:44 PM  
 Instrument 4  
 DB-ALC1

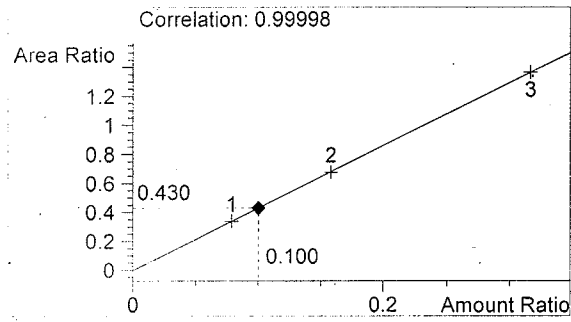
0.100 Control EM  
 Estuardo J. Miranda

vial # 1

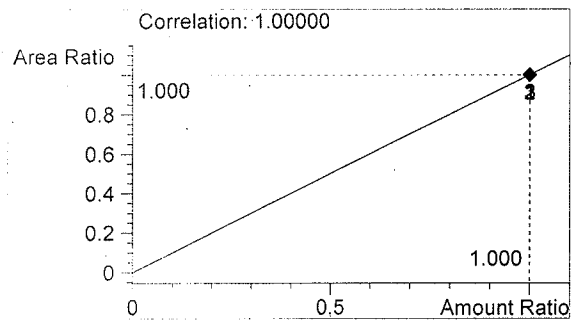


#	Compound	Area	RT
1	Ethanol	646	1.009
2	n-Propanol	1502	1.664

Totals:



Ethanol 0.100 g/100ml

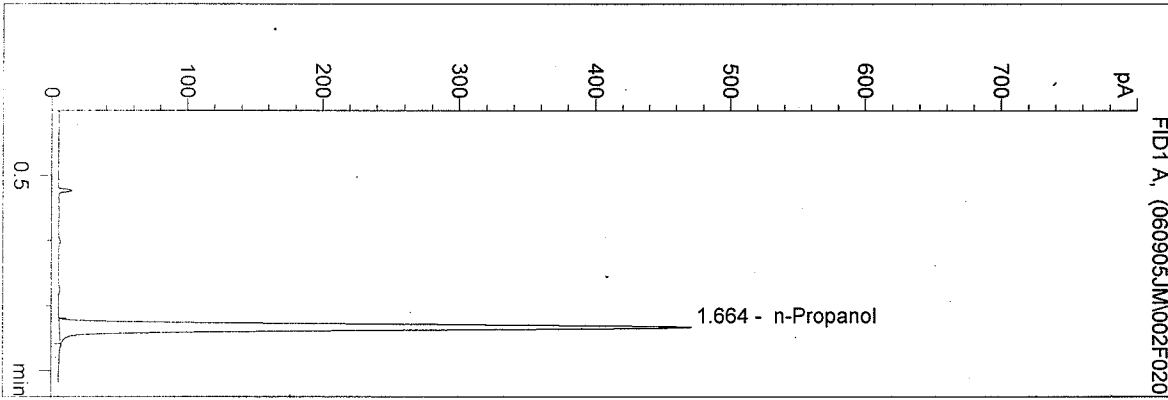


n-Propanol 1.000 g/100ml

D:\HPCHEM\1\METHODS\BLDALCO.M  
 9/5/2006 4:28:00 PM  
 Instrument 4  
 DB-ALC1

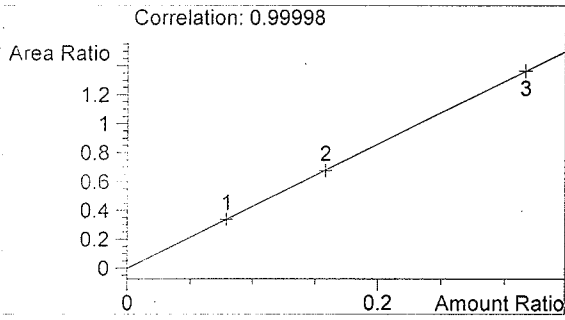
Blank  
 Estuardo J. Miranda

vial # 2

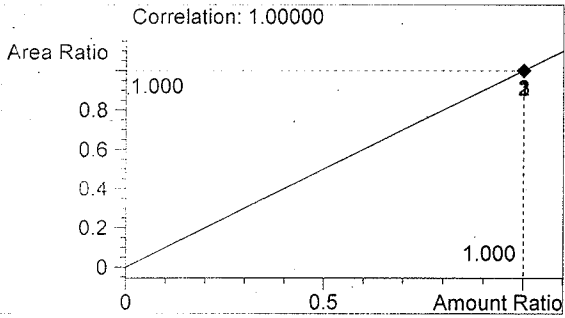


#	Compound	Area	RT
1	Ethanol	0	0.000
2	n-Propanol	1471	1.664

Totals:



Ethanol 0.000 g/100ml



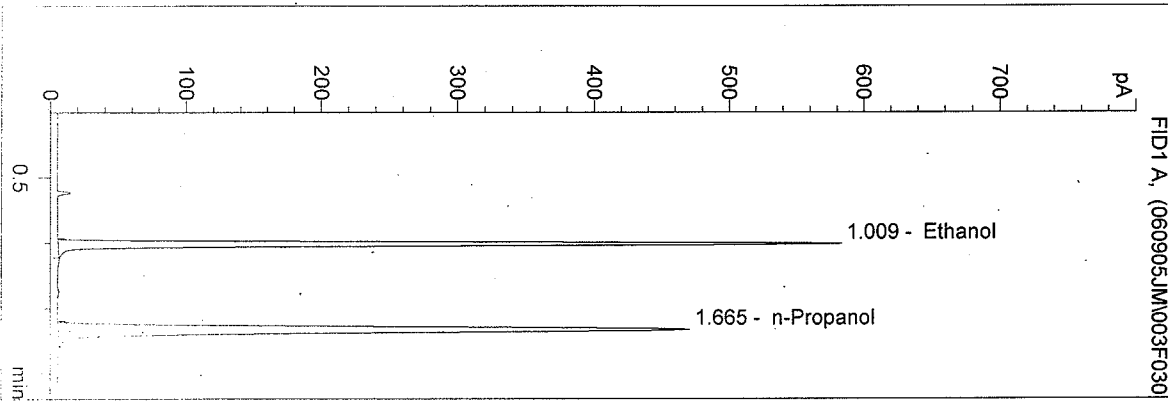
n-Propanol 1.000 g/100ml



D:\HPCHEM\1\METHODS\BLDALCO.M  
 9/5/2006 4:31:13 PM  
 Instrument 4  
 DB-ALC1

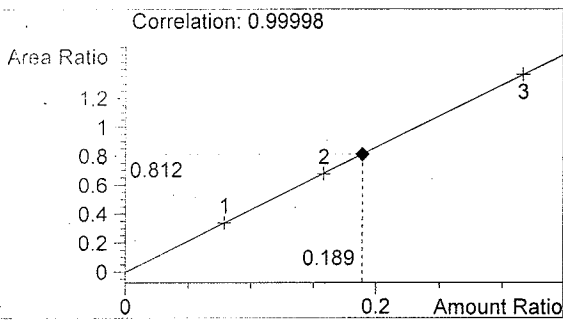
QA 06035-1  
 Estuardo J. Miranda

vial # 3

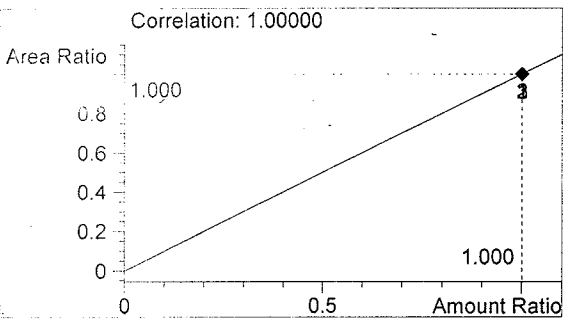


#	Compound	Area	RT
1	Ethanol	1192	1.009
2	n-Propanol	1469	1.665

Totals:



Ethanol 0.189 g/100ml

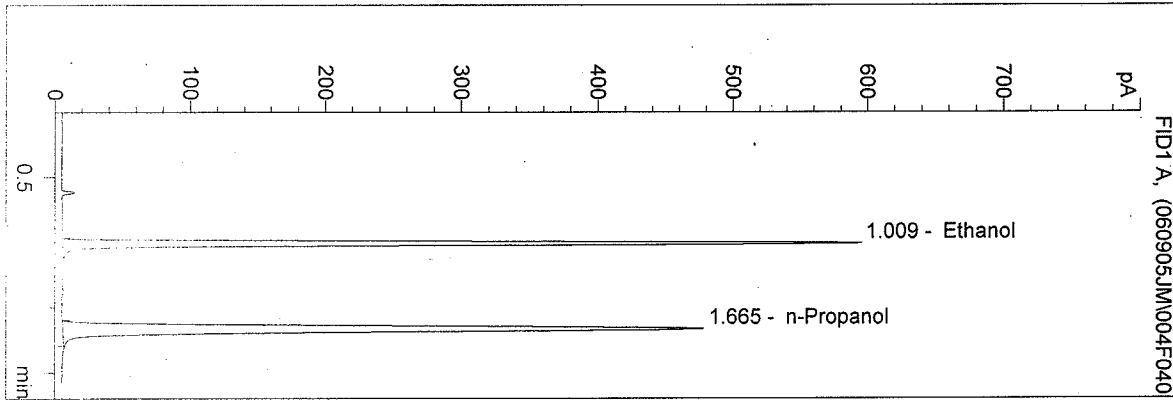


n-Propanol 1.000 g/100ml

D:\HPCHEM\1\METHODS\BLDALCO.M  
 9/5/2006 4:34:23 PM  
 Instrument 4  
 CB-ALC1

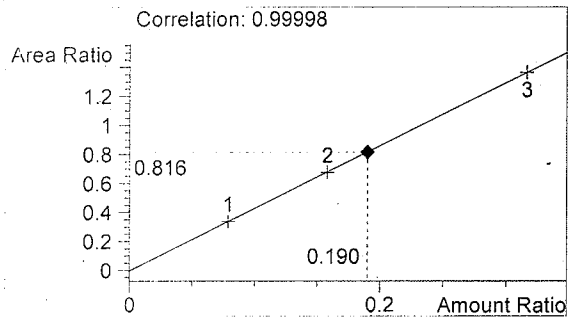
QA 06035-2  
 Estuardo J. Miranda

vial # 4

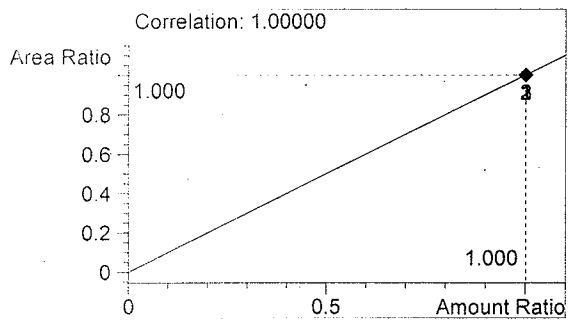


#	Compound	Area	RT
1	Ethanol	1219	1.009
2	n-Propanol	1493	1.665

Totals:



Ethanol 0.190 g/100ml

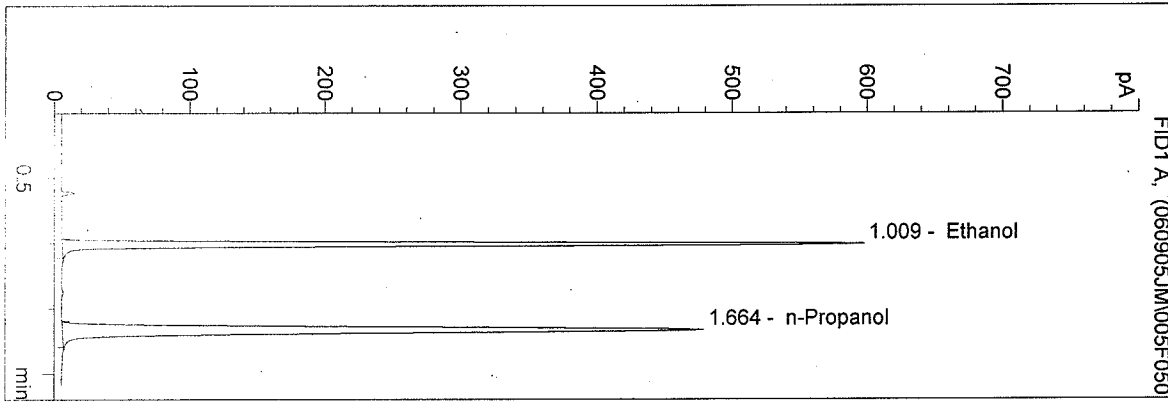


n-Propanol 1.000 g/100ml

D:\HPCHEM\1\METHODS\BLDALCO.M  
 9/5/2006 4:37:44 PM  
 Instrument 4  
 DB-ALC1

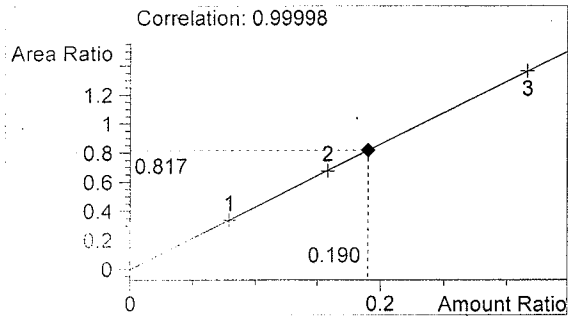
QA 06035-3  
 Estuardo J. Miranda

vial # 5

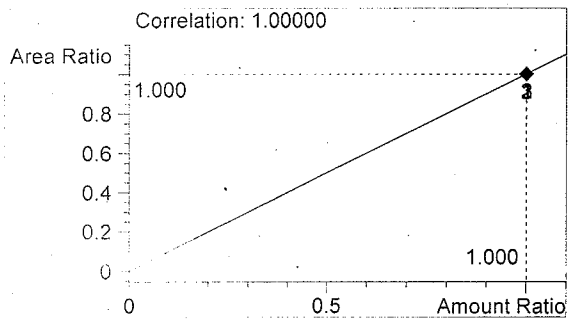


#	Compound	Area	RT
1	Ethanol	1221	1.009
2	n-Propanol	1494	1.664

Totals:



Ethanol 0.190 g/100ml

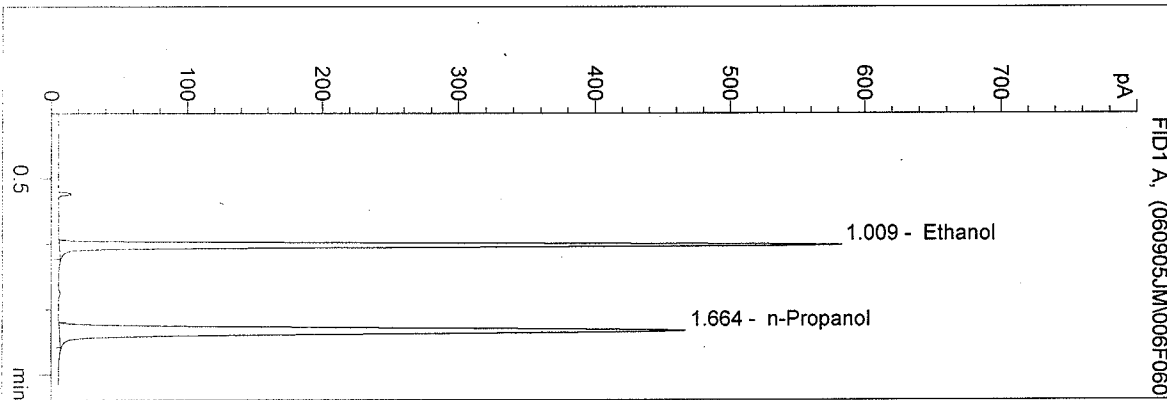


n-Propanol 1.000 g/100ml

D:\HPCHEM\1\METHODS\BLDALCO.M  
 9/5/2006 4:40:53 PM  
 Instrument 4  
 DB-ALC1

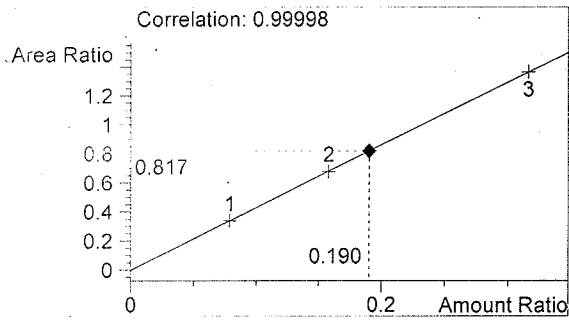
QA 06035-4  
 Estuardo J. Miranda

vial # 6

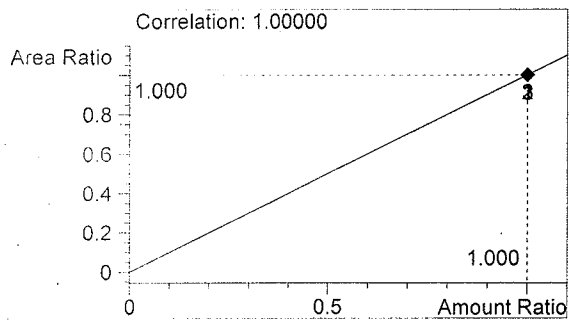


#	Compound	Area	RT
1	Ethanol	1190	1.009
2	n-Propanol	1456	1.664

Totals:



Ethanol 0.190 g/100ml

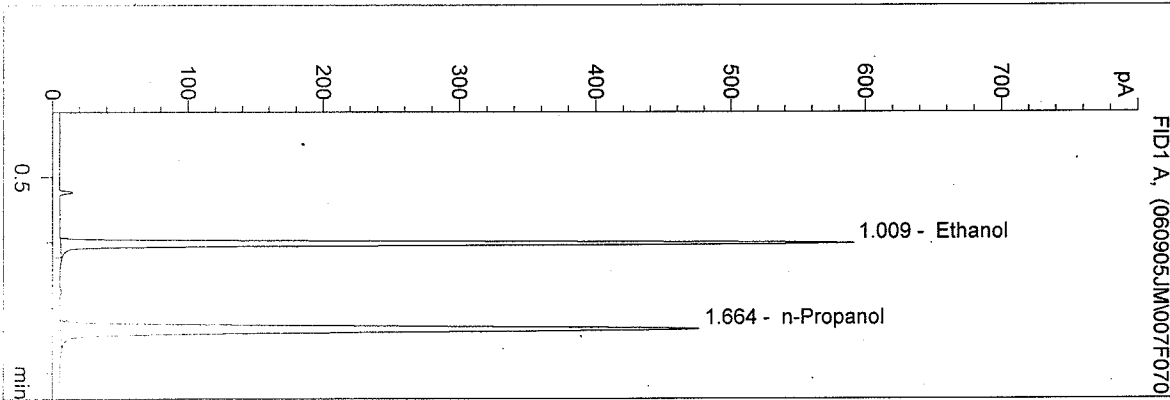


n-Propanol 1.000 g/100ml

D:\HPCHEM\1\METHODS\BLDALCO.M  
 9/5/2006 4:46:17 PM  
 Instrument 4  
 DP-ALC1

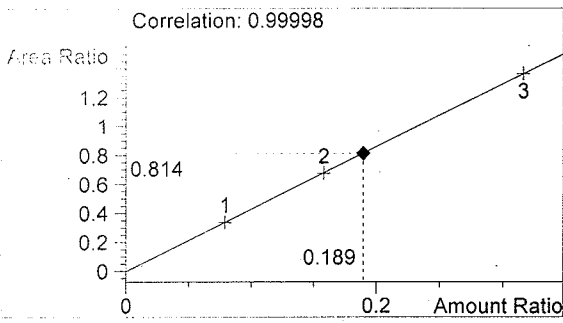
QA 06035-5  
 Estuardo J. Miranda

vial # 7

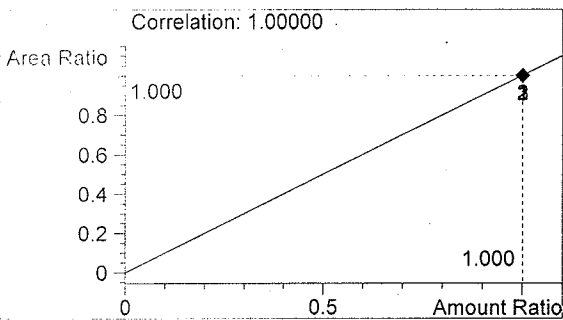


#	Compound	Area	RT
1	Ethanol	1211	1.009
2	n-Propanol	1487	1.664

Totals:



Ethanol 0.189 g/100ml

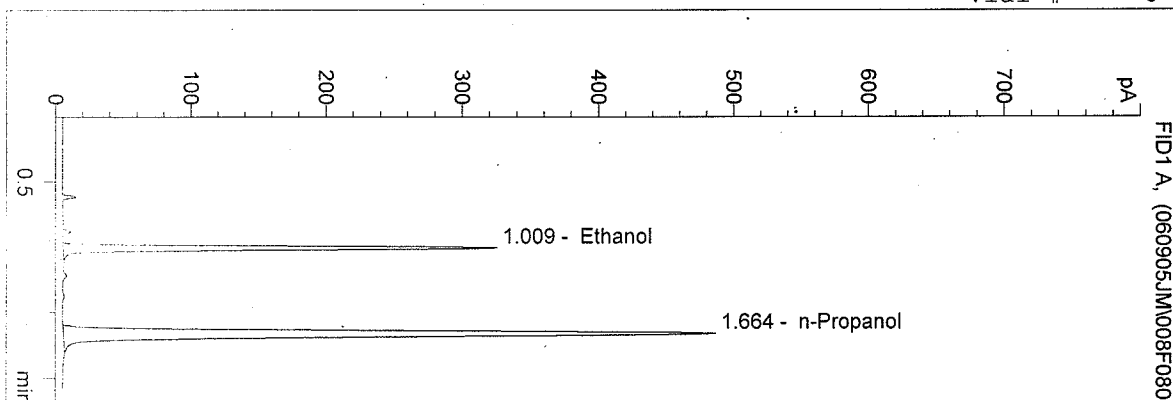


n-Propanol 1.000 g/100ml

E:\MSDCHEM\1\METHODS\BLDALCO.M  
 9/5/2006 4:49:39 PM  
 Instrument 4  
 DB-ALC1

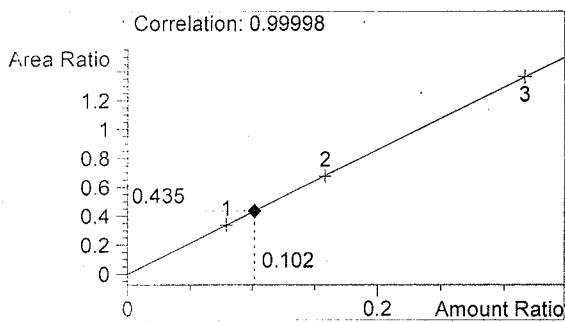
0.100 Control EM  
 Estuardo J. Miranda

vial # 8

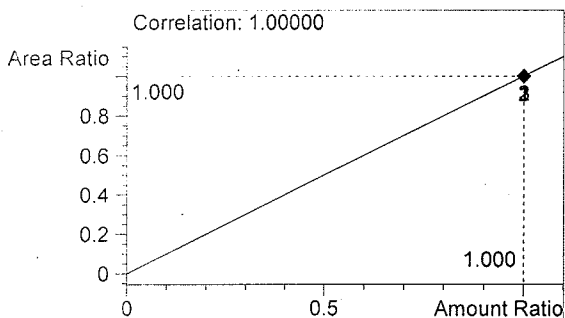


#	Compound	Area	RT
1	Ethanol	661	1.009
2	n-Propanol	1520	1.664

Totals:



Ethanol 0.102 g/100ml



n-Propanol 1.000 g/100ml

D:\HPCHEM\1\METHODS\BLDALCO.M

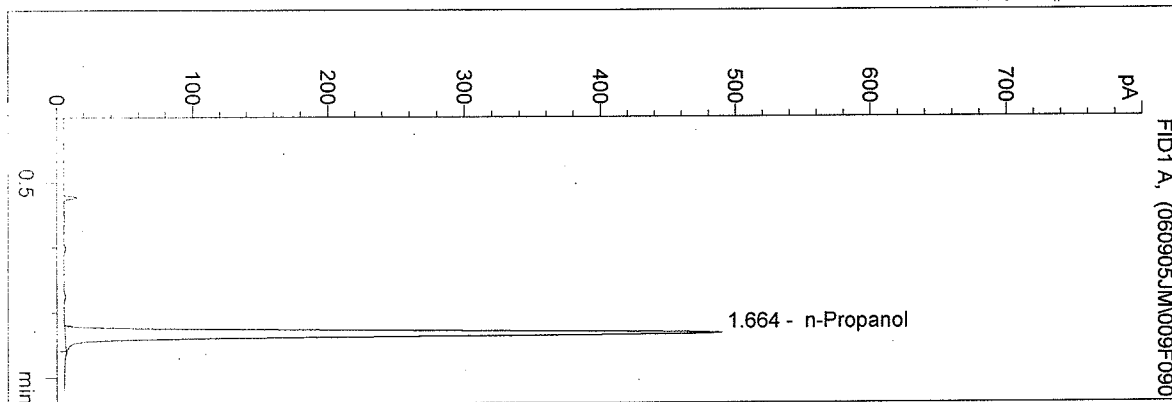
9/5/2006 4:52:56 PM

Instrument 4

DB-ALC1

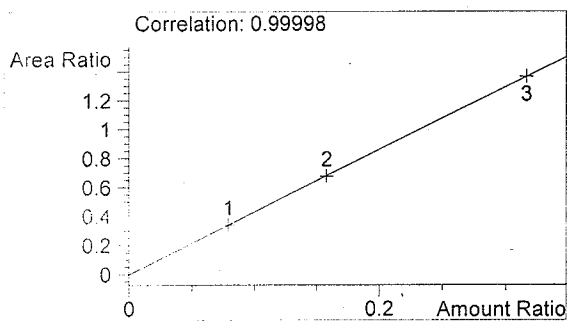
Blank  
Estuardo J. Miranda

vial # 9

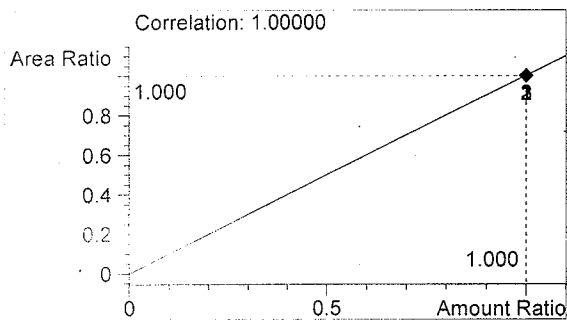


#	Compound	Area	RT
1	Ethanol	0	0.000
2	n-Propanol	1531	1.664

Totals:



Ethanol 0.000 g/100ml

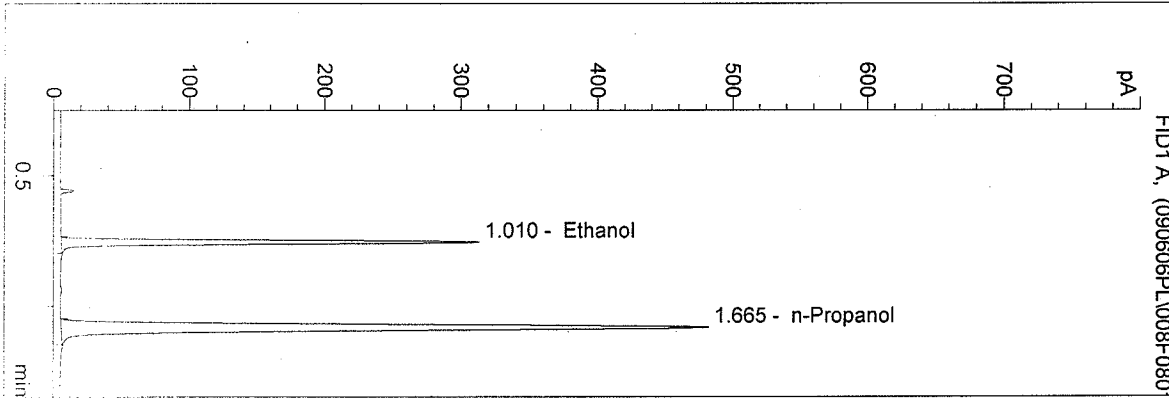


n-Propanol 1.000 g/100ml

D:\HPCHEM\1\METHODS\BLDALCO.M  
 9/6/2006 1:56:22 PM  
 Instrument 4  
 DB-ALC1

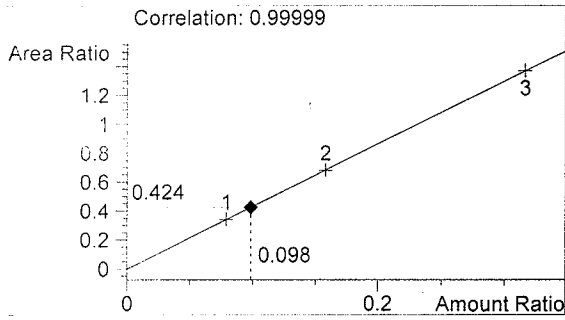
0.10CTL  
 p long

vial # 8

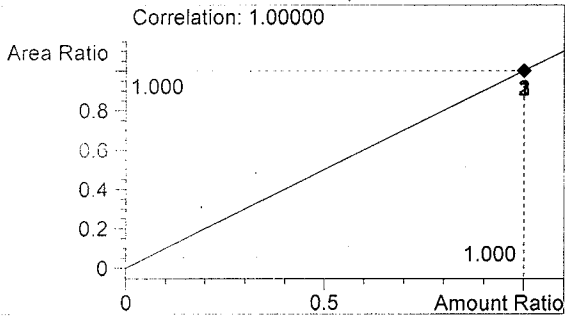


#	Compound	Area	RT
1	Ethanol	640	1.010
2	n-Propanol	1510	1.665

Totals:



Ethanol 0.098 g/100ml



n-Propanol 1.000 g/100ml



D:\HPCHEM\1\METHODS\BLDALCO.M

9/6/2006 1:59:39 PM

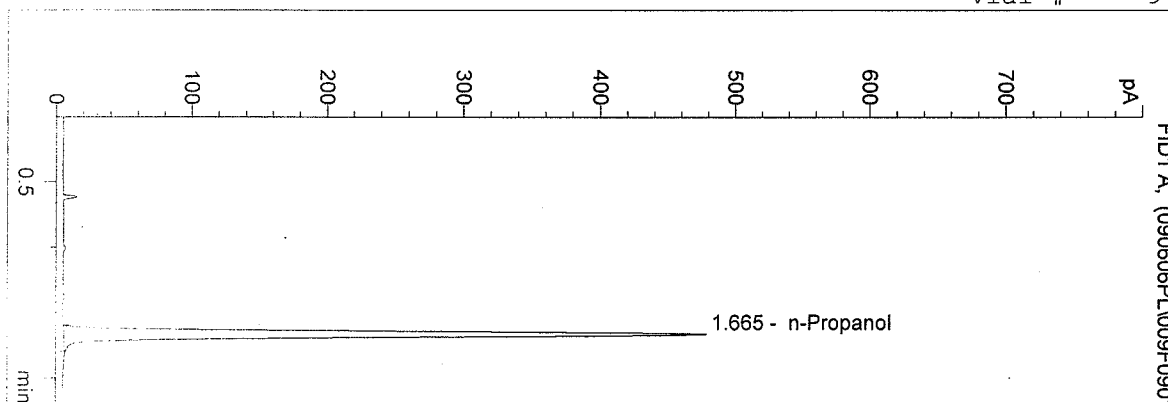
Instrument 4

EE-AL01

BLANK

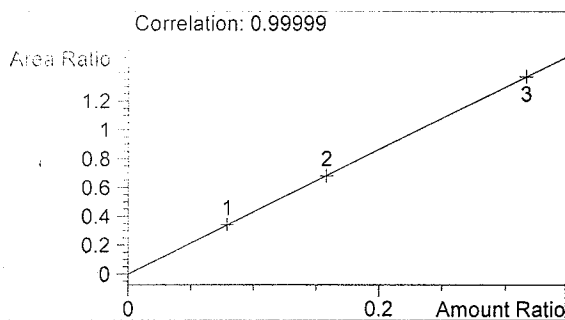
p long

vial # 9

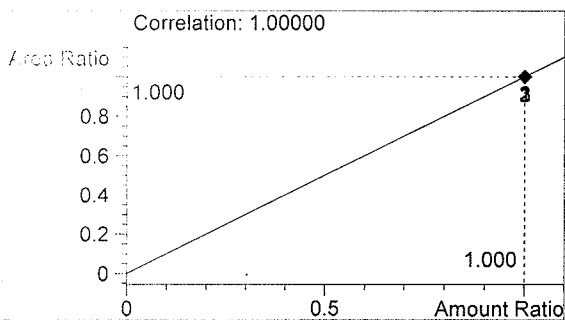


#	Compound	Area	RT
1	Ethanol	0	0.000
2	n-Propanol	1500	1.665

Totals:



Ethanol 0.000 g/100ml

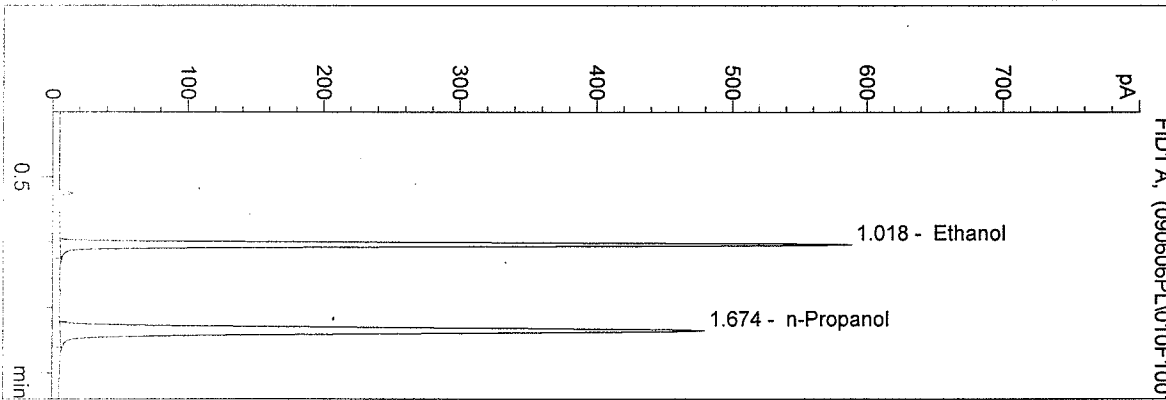


n-Propanol 1.000 g/100ml

D:\NPPCHEM\1\METHODS\BLDALCO.M  
 9/6/2006 2:02:50 PM  
 Instrument 4  
 DB-ALC1

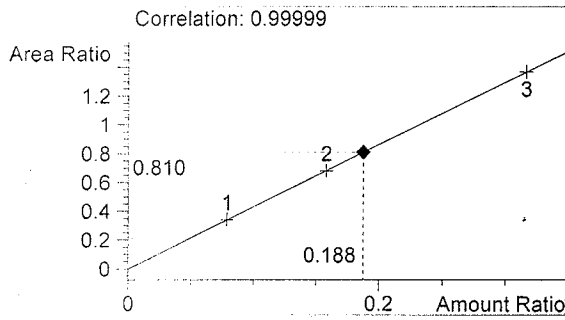
QA 06035-1  
 p long

vial # 10

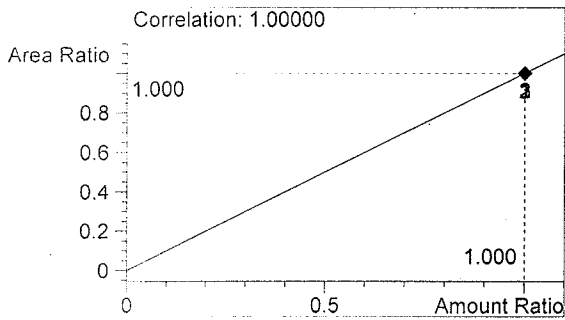


#	Compound	Area	RT
1	Ethanol	1215	1.018
2	n-Propanol	1500	1.674

Totals:



Ethanol 0.188 g/100ml

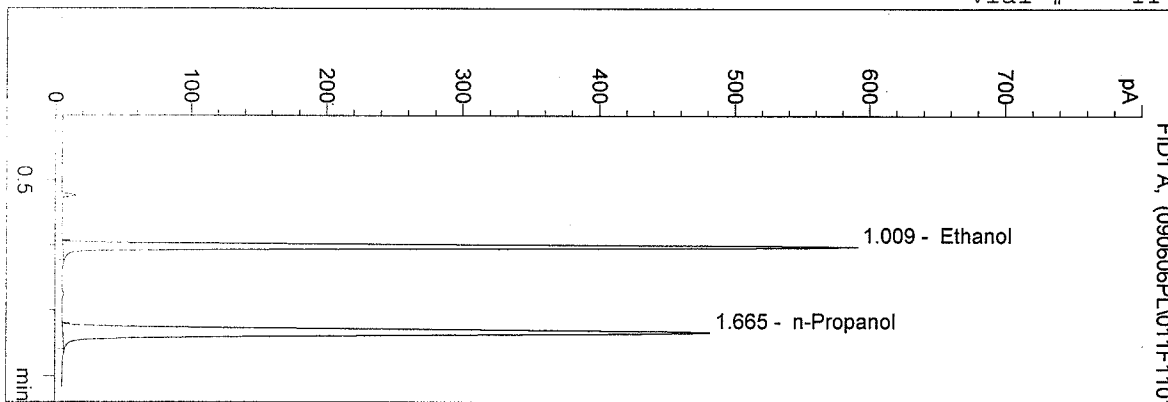


n-Propanol 1.000 g/100ml

D:\HPCHEM\1\METHODS\BLDALCO.M  
 9/6/2006 2:06:09 PM  
 Instrument 4  
 DB-ALC1

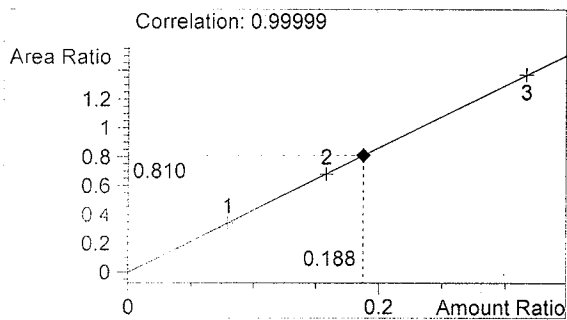
QA 06035-2  
 p long

vial # 11

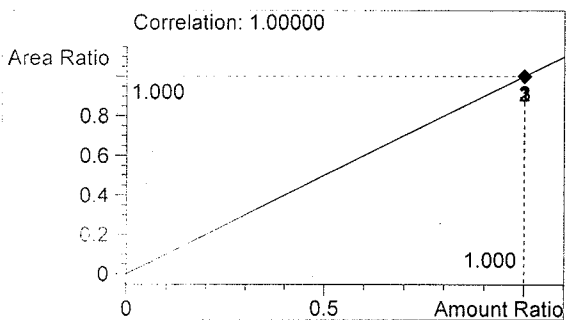


#	Compound	Area	RT
1	Ethanol	1222	1.009
2	n-Propanol	1508	1.665

Totals:



Ethanol 0.188 g/100ml

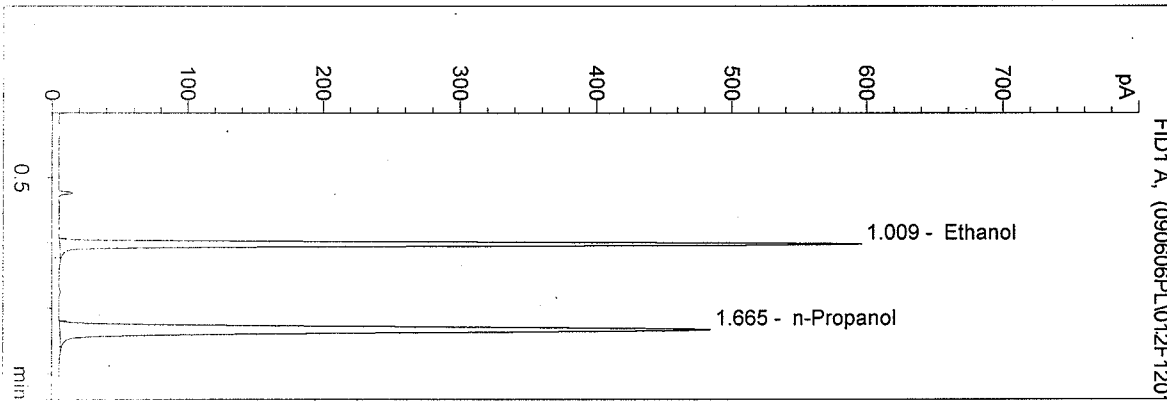


n-Propanol 1.000 g/100ml

D:\HPCHEM\1\METHODS\BLDALCO.M  
 9/6/2006 2:09:25 PM  
 Instrument 4  
 DB-ALC1

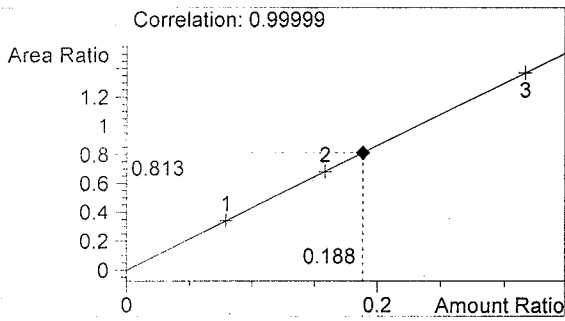
QA 06035-3  
 p long

vial # 12

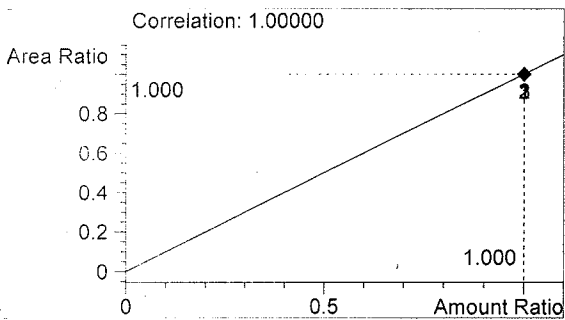


#	Compound	Area	RT
1	Ethanol	1235	1.009
2	n-Propanol	1518	1.665

Totals:



Ethanol 0.188 g/100ml

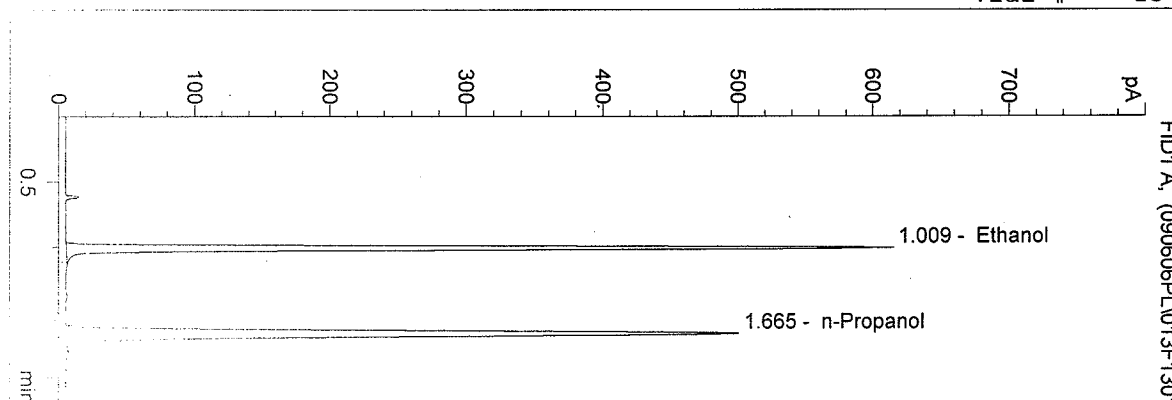


n-Propanol 1.000 g/100ml

D:\HPCHEM\1\METHODS\BLDALCO.M  
 9/6/2006 2:12:37 PM  
 Instrument 4  
 DE-AL01

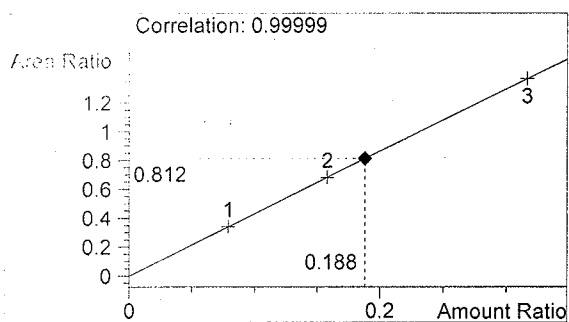
QA 06035-4  
 p long

vial # 13

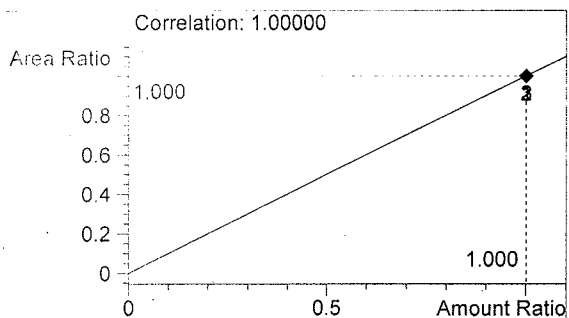


#	Compound	Area	RT
1	Ethanol	1271	1.009
2	n-Propanol	1566	1.665

Totals:



Ethanol 0.188 g/100ml

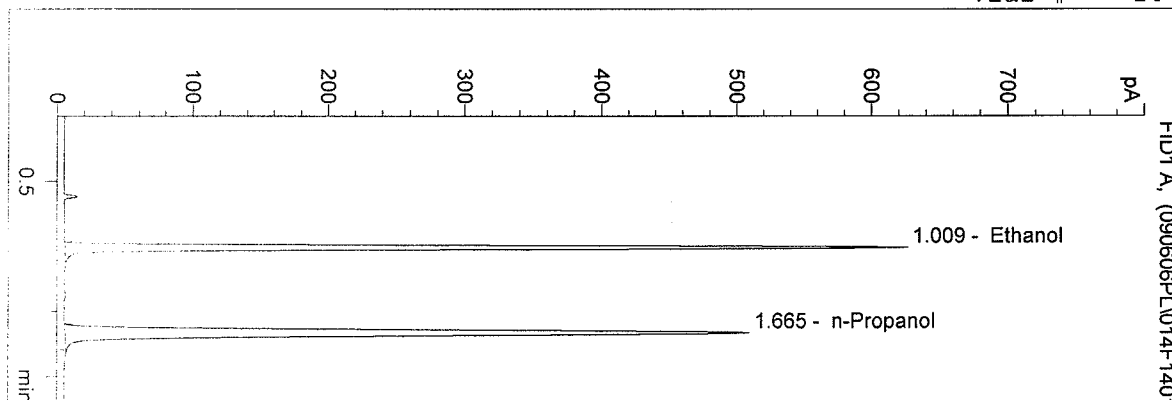


n-Propanol 1.000 g/100ml

D:\HPCHEM\1\METHODS\BLDALCO.M  
 9/6/2006 2:15:49 PM  
 Instrument 4  
 CB-ALC1

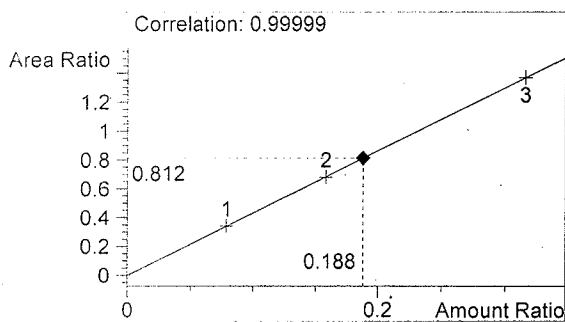
QA 06035-5  
 p long

vial # 14

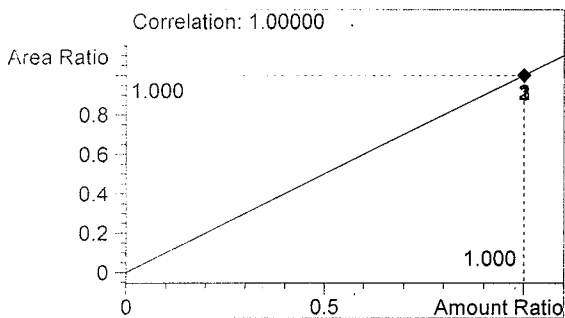


#	Compound	Area	RT
1	Ethanol	1297	1.009
2	n-Propanol	1597	1.665

Totals:



Ethanol 0.188 g/100ml



n-Propanol 1.000 g/100ml