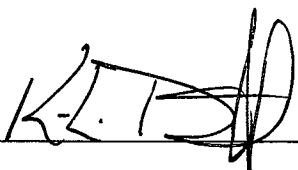


Notice of Simulator Solution File Review

At the request of the State Toxicologist a review of the following simulator solution records has been accomplished. The following file consists of simulator solution analyses performed and completed by the State Toxicology Laboratory for a specific batch number. The file contains the simulator solution data entry form along with a file review record and the chromatograms generated by the Toxicology Laboratory during the analyses of the solutions. This file has been reviewed by Tpr. Ken Denton and Mr. Rod Gullberg for accuracy and completeness. Where computations regarding simulator solution values have been found to be incorrect, the corrected values have been written in by Mr. Rod Gullberg along with initials and date. The corrected values were then evaluated to ensure that the solution still conformed to those standards established by the State Toxicologist.

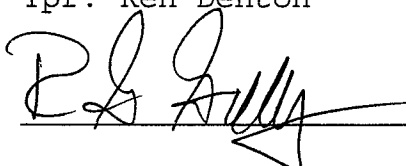
Where computation values changed for a specific batch number, the analysts employed by the State Toxicology Laboratory were asked to review the revisions, ensure the solution complied with the criteria established by the State Toxicologist and then re-sign their affidavit. Their signature will appear on their original affidavit along with a statement regarding their review of the results.

Where a dating error occurred that analyst will have made the correction on the original data form including their initials and date and then re-signed their original affidavit.



Tpr. Ken Denton

Date



Rod G. Gullberg

Date

Washington State Toxicology Laboratory

Simulator Solution Data Entry Review Form

Reviewer KENDENTON/ROL GULLBERG Date 10-4-07
Location TOX LAB SEATTLE Batch Number 06023

Form Review Criteria

Preparation date precedes all analysis dates: Okay Not Okay ___
Data entry corresponds to all chromatograms: Okay Not Okay ___
All signatures present: Okay Not Okay ___

Computations:

Avg. solution concentration: Correct Not Correct ___

Standard deviation: Correct Not Correct ___

Range: Correct Not Correct ___

Precision: Correct Not Correct ___

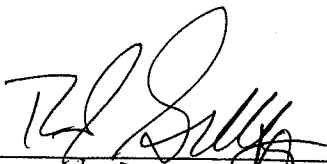
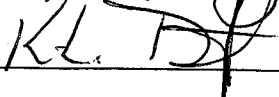
Equivalent vapor concent.: Correct Not Correct ___

External Control Information
(lot # and future date): Correct Not Correct ___

Complies with accuracy and precision requirements established by the
State Toxicologist: Yes No ___

Corrections Necessary:

Comments:

Reviewer Signature:  Date: 10-4-07
Reviewer Signature:  Date: 10/4/2007

WASHINGTON STATE TOXICOLOGY LABORATORY
FORENSIC LABORATORY SERVICES BUREAU
 WASHINGTON STATE PATROL
 2203 AIRPORT WAY S, SUITE 360
 SEATTLE, WASHINGTON 98134-2027
 (206) 262-6100 FAX (206) 262-6145

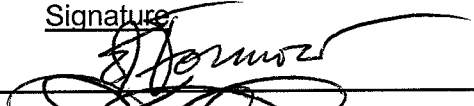
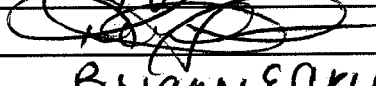

Preparation and certification of **0.10** g/210L Quality Assurance solution
 Batch number **06023** Date: 5/17/2006
 Preparation: 28.9 mL of absolute ethyl alcohol diluted to 18 Liters with water
 Concentration of ethanol (g/100mL) measured by gas chromatography:

| | Anal 1 | Anal 2 | Anal 3 | Anal 4 | Anal 5 | Anal 6 | Anal 7 | Anal 8 | Anal 9 | Anal 10 | Anal 11 | Anal 12 | Anal 13 | Anal 14 | Anal 15 | Anal 16 |
|------|--------|--------|--------|--------|--------|--------|--------|--------|--------|---------|---------|---------|---------|---------|---------|---------|
| 1 | 0.128 | 0.128 | 0.124 | | | | | | | | | | | | | |
| 2 | 0.130 | 0.128 | 0.124 | | | | | | | | | | | | | |
| 3 | 0.130 | 0.128 | 0.125 | | | | | | | | | | | | | |
| 4 | 0.130 | 0.129 | 0.124 | | | | | | | | | | | | | |
| 5 | 0.129 | 0.129 | 0.124 | | | | | | | | | | | | | |
| Ctrl | 0.102 | 0.101 | 0.097 | | | | | | | | | | | | | |

External Control:
 Lot #: a035928-20 Exp date: 7/09
 Target concentration: 0.10 g/100mL

Statistics:
 Avg. solution concent.: 0.1273 g/100 mL
 SD: 0.00241
 Range (3xSD): 0.1201 to 0.1345
 Precision CV (%): 1.8934 %

Equivalent vapor concent.: 0.1035 g/210L

| Analyst | Name | Signature | Date |
|---------|----------------|--|------------|
| 1 | Edward Formoso |  | 05/19/2006 |
| 2 | Kelly Gross |  | 05/23/2006 |
| 3 | Brianne Akins |  | 05/23/2006 |
| 4 | | | |
| 5 | | | |
| 6 | | | |
| 7 | | | |
| 8 | | | |
| 9 | | | |
| 10 | | | |
| 11 | | | |
| 12 | | | |
| 13 | | | |
| 14 | | | |
| 15 | | | |
| 16 | | | |

Prepared by: Edward Formoso according to the approved protocol



STATE OF WASHINGTON
WASHINGTON STATE PATROL

WASHINGTON STATE TOXICOLOGY LABORATORY

2203 Airport Way South, Suite 360•Seattle, Washington 98134-2927•(206) 262-6100•FAX (206) 262-6145

DATAMASTER QUALITY ASSURANCE SOLUTION
CERTIFICATION

I, Edward J. Formoso, do certify under penalty of perjury that:

I am employed by the Washington State Toxicology Laboratory, and a part of my responsibilities includes preparing and testing the alcohol solutions for the DataMaster breath test instrument.

I possess the following qualifications: BS degree in Chemistry and twenty-nine years of experience in the Washington State Toxicology Laboratory.

The quality assurance solution, Lot Number 06023, was prepared in the Washington State Toxicology Laboratory on 5/17/2006. I examined and tested this solution. The mean concentration of the alcohol was 0.1273 grams per 100ml.

Dated: 5/24/2006
Seattle, WA

Edward J. Formoso
Forensic Toxicologist

EJF/ks
EFQA





STATE OF WASHINGTON
WASHINGTON STATE PATROL
WASHINGTON STATE TOXICOLOGY LABORATORY

2203 Airport Way South, Suite 360•Seattle, Washington 98134-2927•(206) 262-6100•FAX (206) 262-6145

DATAMASTER QUALITY ASSURANCE SOLUTION
CERTIFICATION


I, Kelly D. Gross, do certify under penalty of perjury that:

I am employed by the Washington State Toxicology Laboratory, and a part of my responsibilities includes preparing and testing the alcohol solutions for the DataMaster breath test instrument.

I possess the following qualifications: B.S. degree in Chemistry and fifteen years of forensic laboratory experience.

The quality assurance solution, Lot Number 06023, was prepared in the Washington State Toxicology Laboratory on 5/17/2006. I examined and tested this solution. The mean concentration of the alcohol was 0.1273 grams per 100ml.

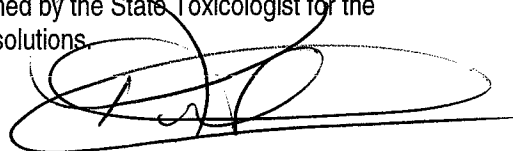
Dated: 5/24/2006
Seattle, WA



Kelly D. Gross
Forensic Toxicologist

KDG/ks
KDGQA

A review of solution batch records was recently completed. After this review, I checked the file for this solution and reviewed all changes that were made. I found that the solution still conformed to those standards established by the State Toxicologist for the certification of simulator solutions.



10052007



STATE OF WASHINGTON
WASHINGTON STATE PATROL

WASHINGTON STATE TOXICOLOGY LABORATORY

2203 Airport Way South, Suite 360•Seattle, Washington 98134-2927•(206) 262-6100•FAX (206) 262-6145

DATAMASTER QUALITY ASSURANCE SOLUTION
CERTIFICATION

I, Brianne E. Akins, do certify under penalty of perjury that:

I am employed by the Washington State Toxicology Laboratory, and a part of my responsibilities includes preparing and testing the alcohol solutions for the DataMaster breath test instrument.

I possess the following qualifications: BS degree in Biology.

The quality assurance solution, Lot Number 06023, was prepared in the Washington State Toxicology Laboratory on 5/17/2006. I examined and tested this solution. The mean concentration of the alcohol was 0.1273 grams per 100ml.

Dated: 5/24/2006
Seattle, WA

Brianne E. Akins

Brianne E. Akins
Forensic Toxicologist

BEA/ks
BAQA

A review of solution batch records was recently completed. After this review, I checked the file for this solution and reviewed all changes that were made. I found that the solution still conformed to those standards established by the State Toxicologist for the certification of simulator solutions.

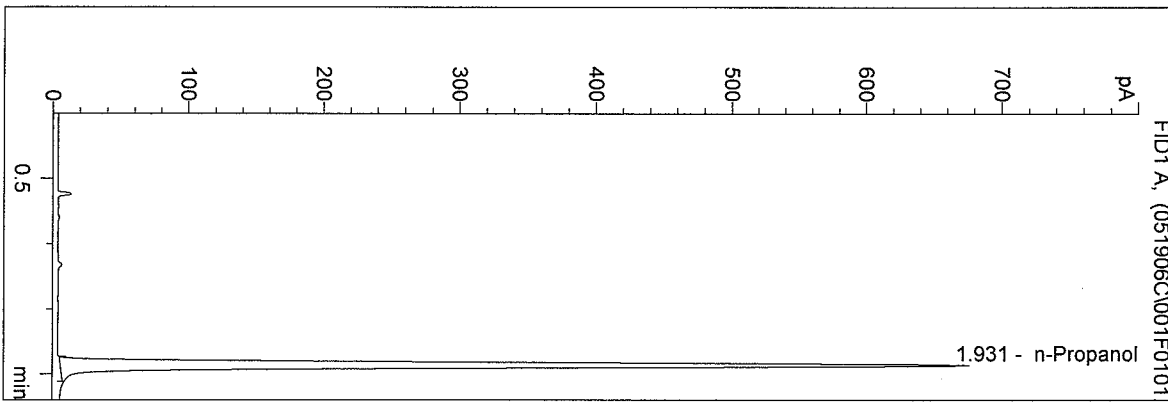
Brianne E. Akins 10-5-07



D:\HPCHEM\1\METHODS\BLDALCO2.M
 5/19/2006 1:57:22 PM
 Instrument 5
 DB-ALC2

BLANK
 SIMULATOR SOLUTION

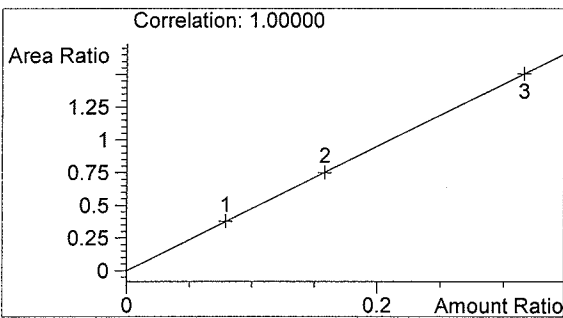
vial # 1



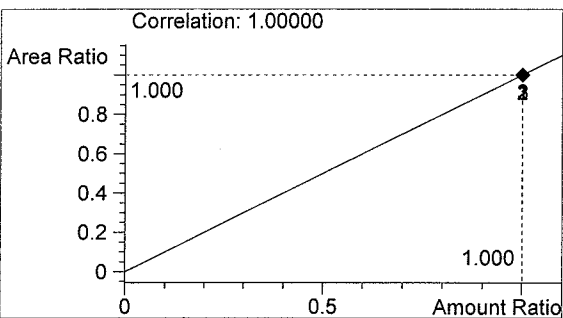
| # | Compound | Area | RT |
|---|------------|------|-------|
| 1 | Ethanol | 0 | 0.000 |
| 2 | n-Propanol | 1955 | 1.931 |

Totals:

EF
06023
PA
10-8-07



Ethanol 0.000 g/100ml

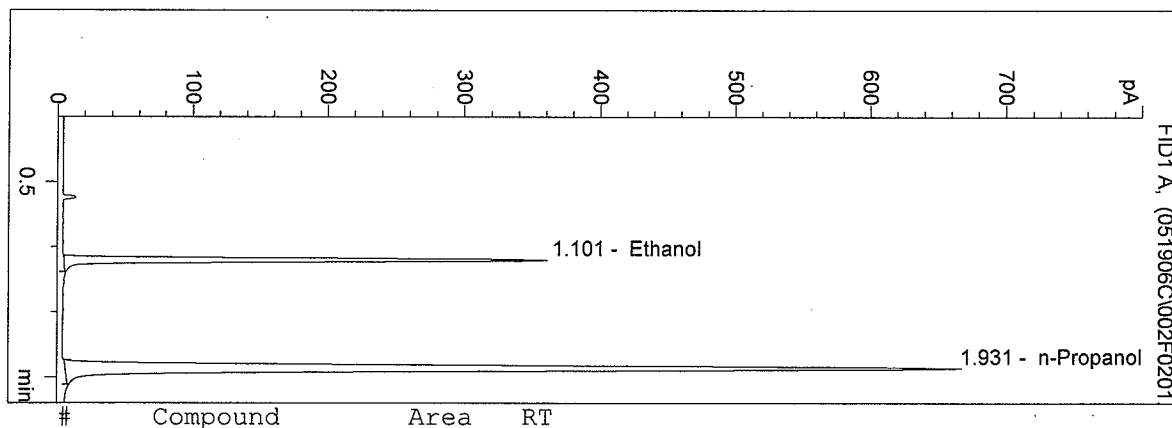


n-Propanol 1.000 g/100ml

D:\HPCHEM\1\METHODS\BLDALCO2.M
 5/19/2006 2:00:35 PM
 Instrument 5
 DB-ALC2

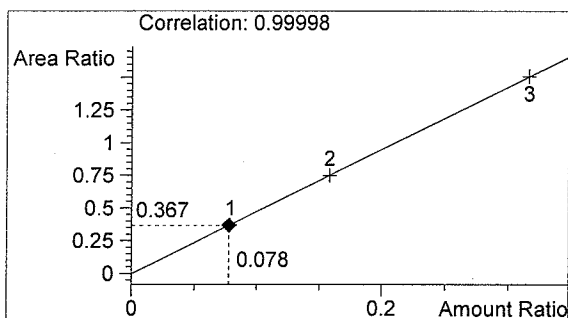
0.079 CAL
 SIMULATOR SOLUTION

vial # 2

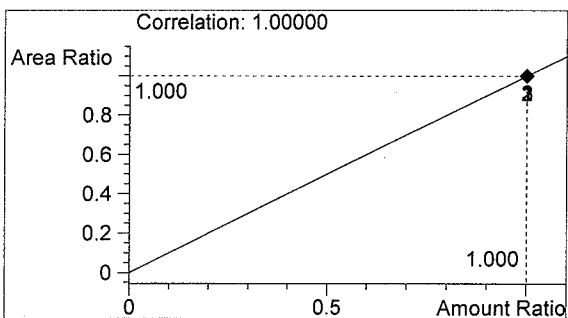


| # | Compound | Area | RT |
|---|------------|------|-------|
| 1 | Ethanol | 706 | 1.101 |
| 2 | n-Propanol | 1926 | 1.931 |

Totals:



Ethanol 0.078 g/100ml

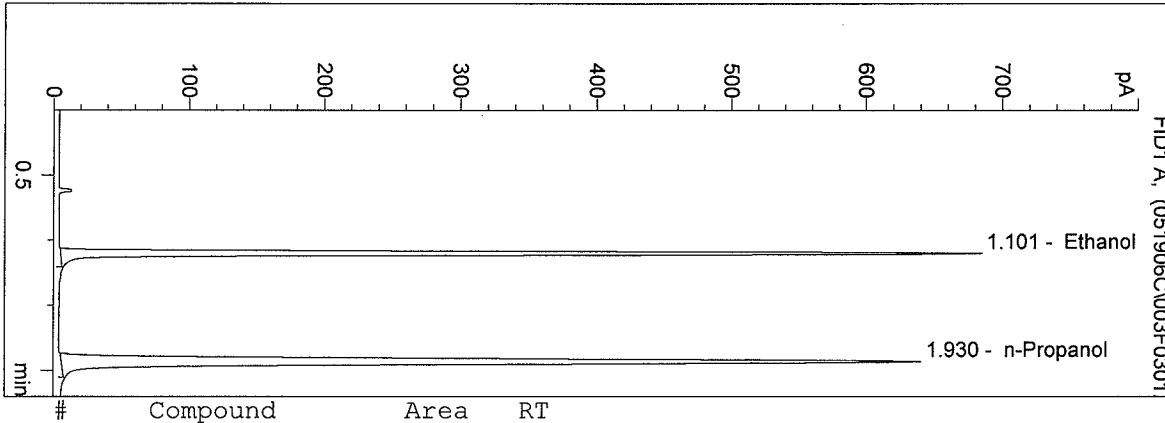


n-Propanol 1.000 g/100ml

D:\HPCHEM\1\METHODS\BLDALCO2.M
 5/19/2006 2:03:47 PM
 Instrument 5
 DB-ALC2

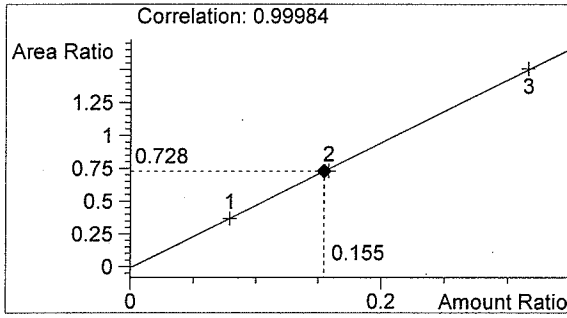
0.158 CAL
 SIMULATOR SOLUTION

vial # 3

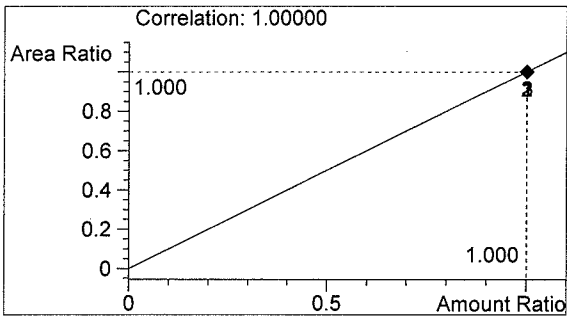


| # | Compound | Area | RT |
|---|------------|------|-------|
| 1 | Ethanol | 1347 | 1.101 |
| 2 | n-Propanol | 1850 | 1.930 |

Totals:



Ethanol 0.155 g/100ml

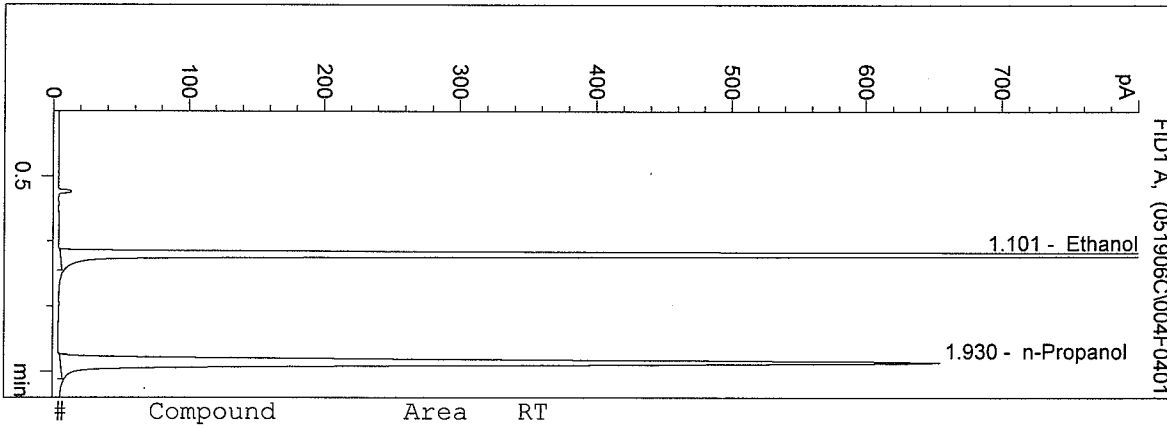


n-Propanol 1.000 g/100ml

D:\HPCHEM\1\METHODS\BLDALCO2.M
 5/19/2006 2:07:04 PM
 Instrument 5
 DB-ALC2

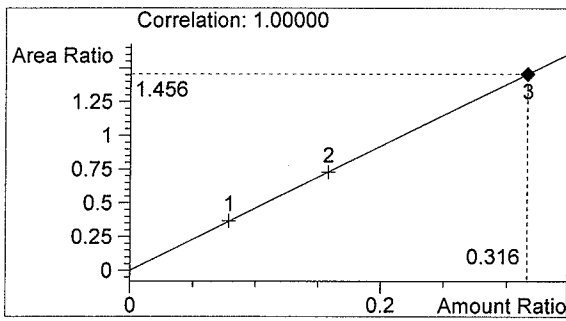
0.316 CAL
 SIMULATOR SOLUTION

vial # 4

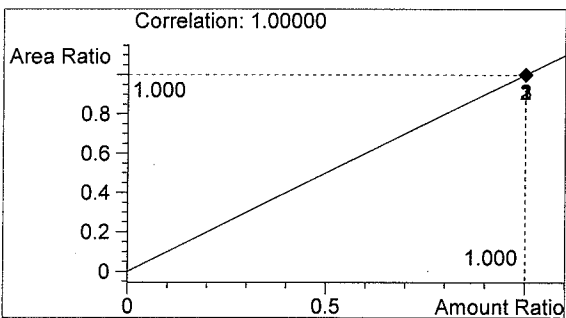


| # | Compound | Area | RT |
|---|------------|------|-------|
| 1 | Ethanol | 2755 | 1.101 |
| 2 | n-Propanol | 1892 | 1.930 |

Totals:



Ethanol 0.316 g/100ml

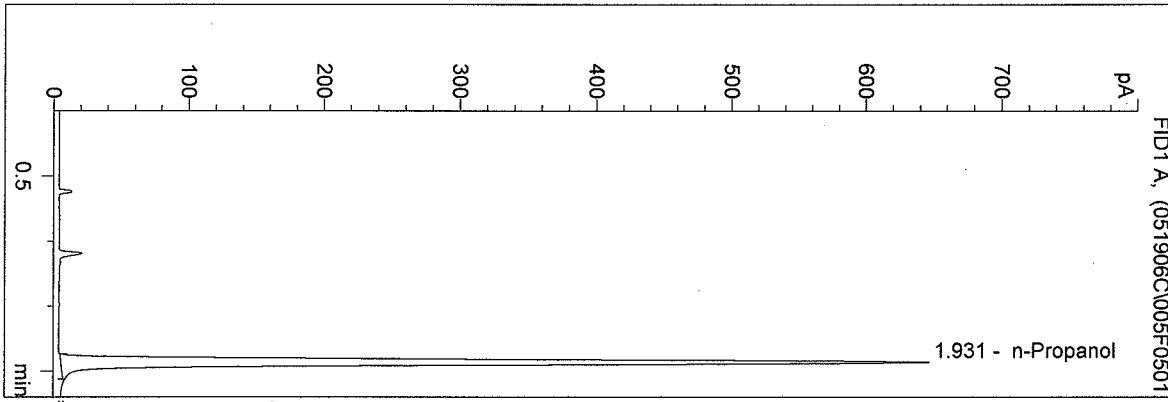


n-Propanol 1.000 g/100ml

D:\HPCHEM\1\METHODS\BLDALCO2.M
 5/19/2006 2:10:16 PM
 Instrument 5
 DB-ALC2

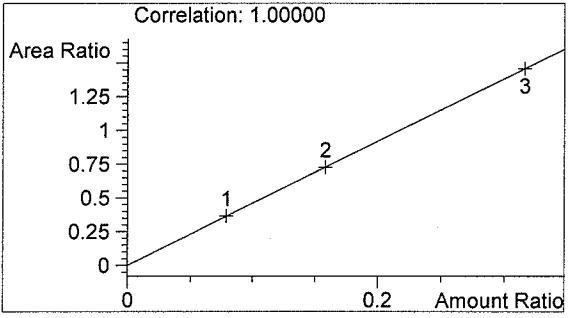
BLANK
 SIMULATOR SOLUTION

vial # 5

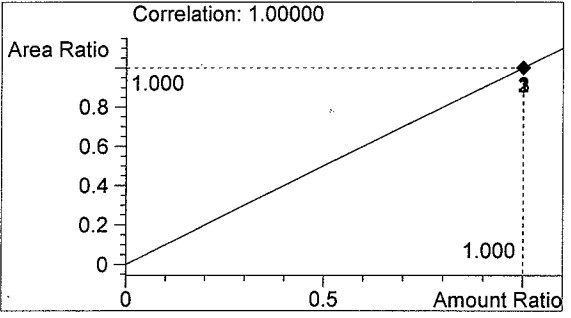


| # | Compound | Area | RT |
|---|------------|------|-------|
| 1 | Ethanol | 0 | 0.000 |
| 2 | n-Propanol | 1875 | 1.931 |

Totals:



Ethanol 0.000 g/100ml

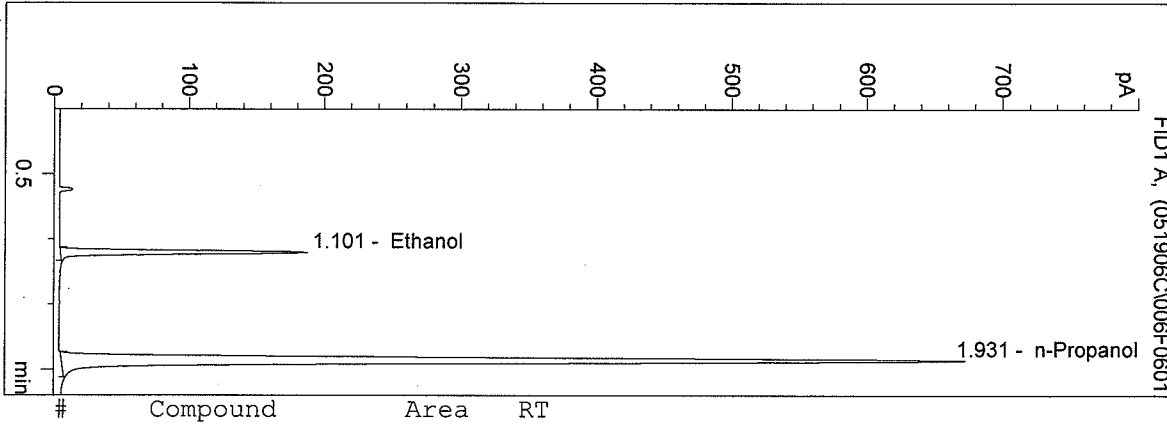


n-Propanol 1.000 g/100ml

D:\HPCHEM\1\METHODS\BLDALCO2.M
 5/19/2006 2:13:25 PM
 Instrument 5
 DB-ALC2

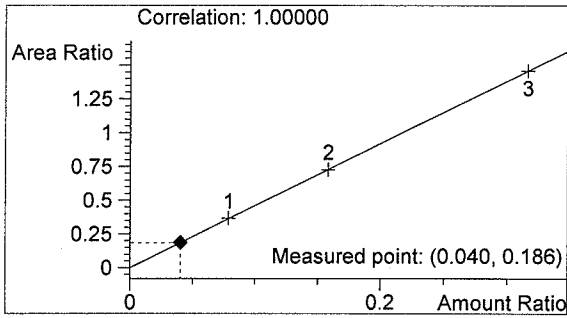
0.04 CONTROL-EF
 SIMULATOR SOLUTION

vial # 6

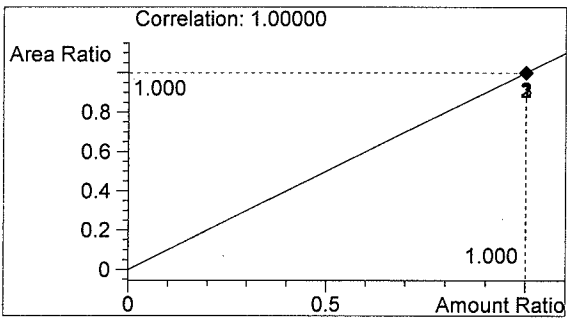


| # | Compound | Area | RT |
|---|------------|------|-------|
| 1 | Ethanol | 362 | 1.101 |
| 2 | n-Propanol | 1949 | 1.931 |

Totals:



Ethanol 0.040 g/100ml

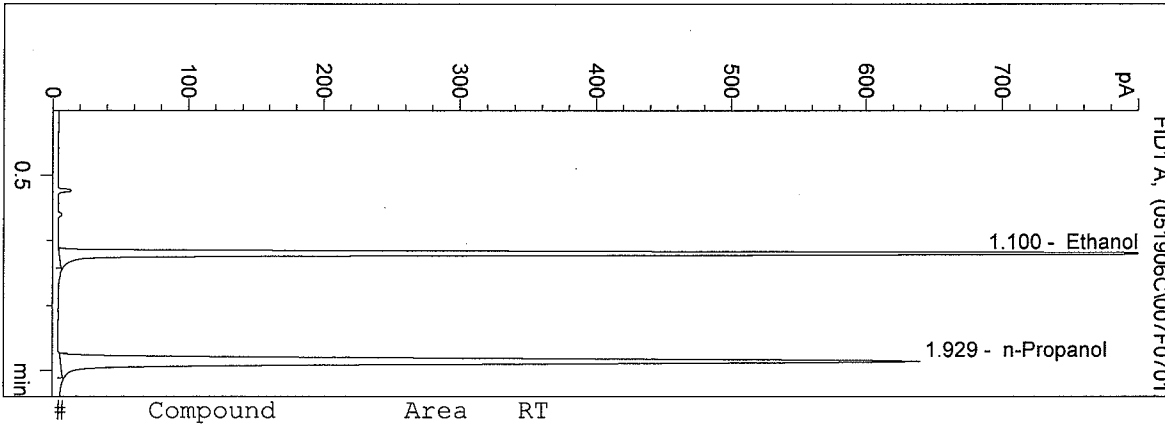


n-Propanol 1.000 g/100ml

D:\HPCHEM\1\METHODS\BLDALCO2.M
 5/19/2006 2:19:10 PM
 Instrument 5
 DB-ALC2

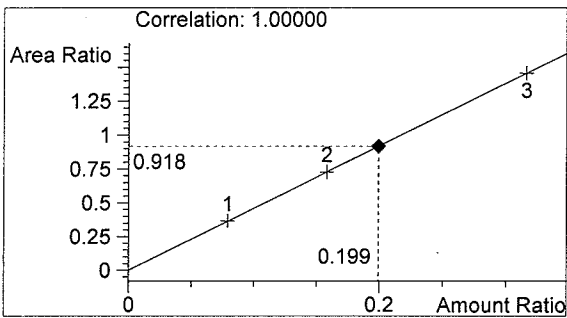
0.20 CONTROL-EF
 SIMULATOR SOLUTION

vial # 7

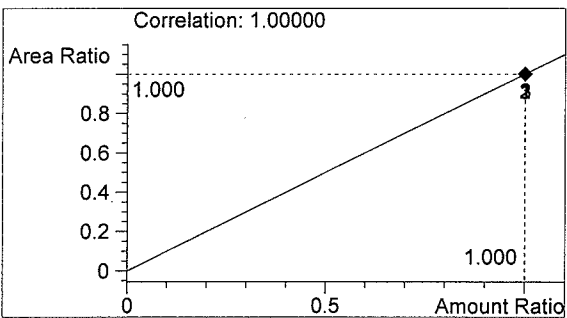


| # | Compound | Area | RT |
|---|------------|------|-------|
| 1 | Ethanol | 1698 | 1.100 |
| 2 | n-Propanol | 1850 | 1.929 |

Totals:



Ethanol 0.199 g/100ml

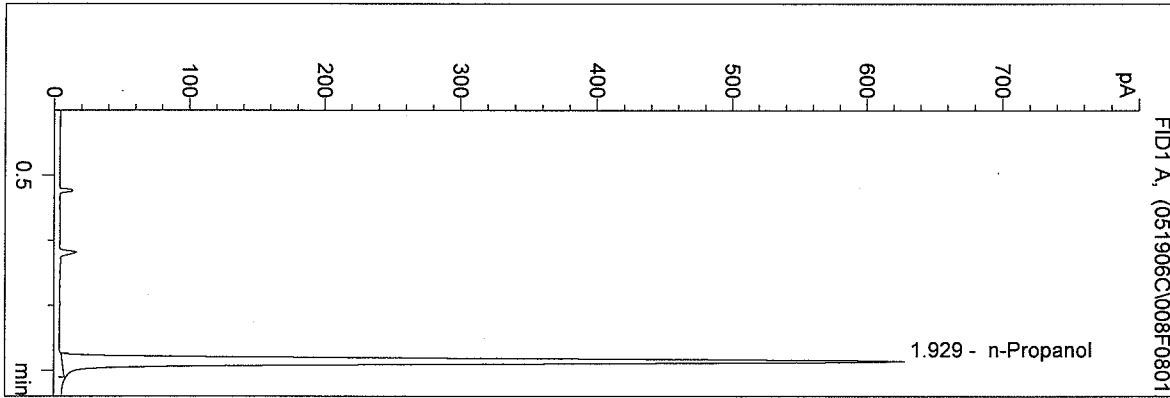


n-Propanol 1.000 g/100ml

D:\HPCHEM\1\METHODS\BLDALCO2.M
 5/19/2006 2:22:24 PM
 Instrument 5
 DB-ALC2

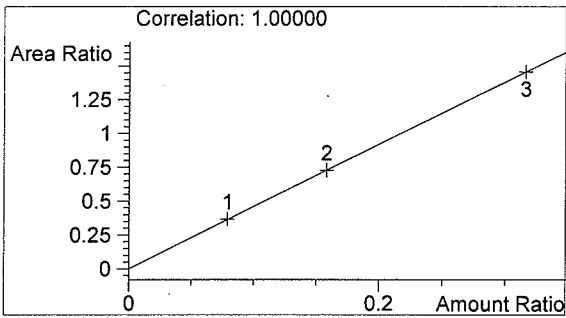
BLANK
 SIMULATOR SOLUTION

vial # 8

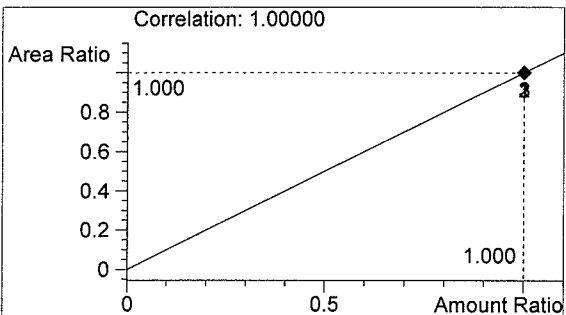


| # | Compound | Area | RT |
|---|------------|------|-------|
| 1 | Ethanol | 0 | 0.000 |
| 2 | n-Propanol | 1818 | 1.929 |

Totals:



Ethanol 0.000 g/100ml

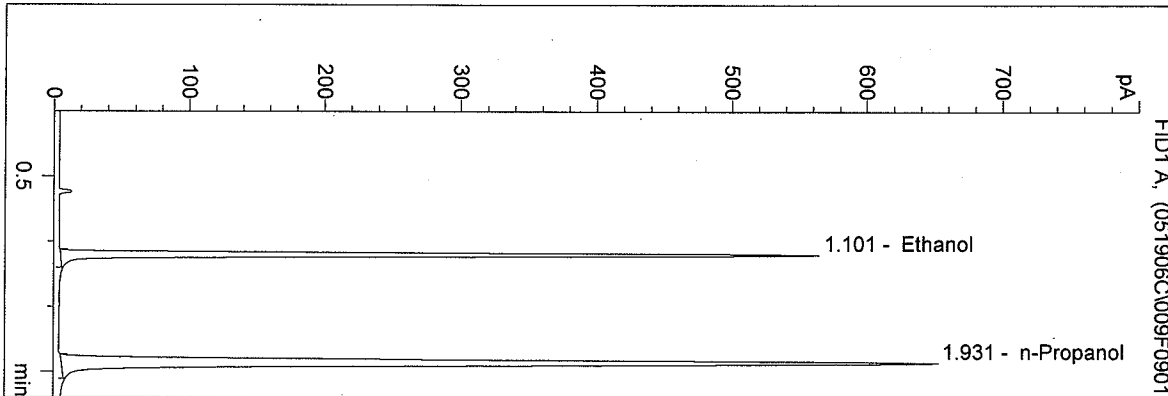


n-Propanol 1.000 g/100ml

D:\HPCHEM\1\METHODS\BLDALCO2.M
 5/19/2006 2:25:39 PM
 Instrument 5
 DB-ALC2

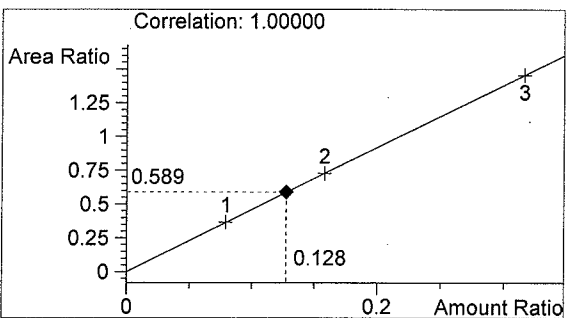
06023
 SIMULATOR SOLUTION

vial # 9

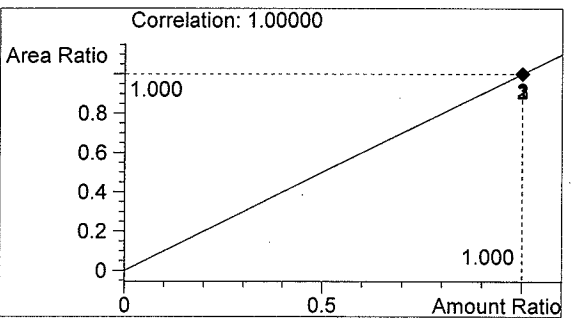


| # | Compound | Area | RT |
|---|------------|------|-------|
| 1 | Ethanol | 1111 | 1.101 |
| 2 | n-Propanol | 1886 | 1.931 |

Totals:



Ethanol 0.128 g/100ml

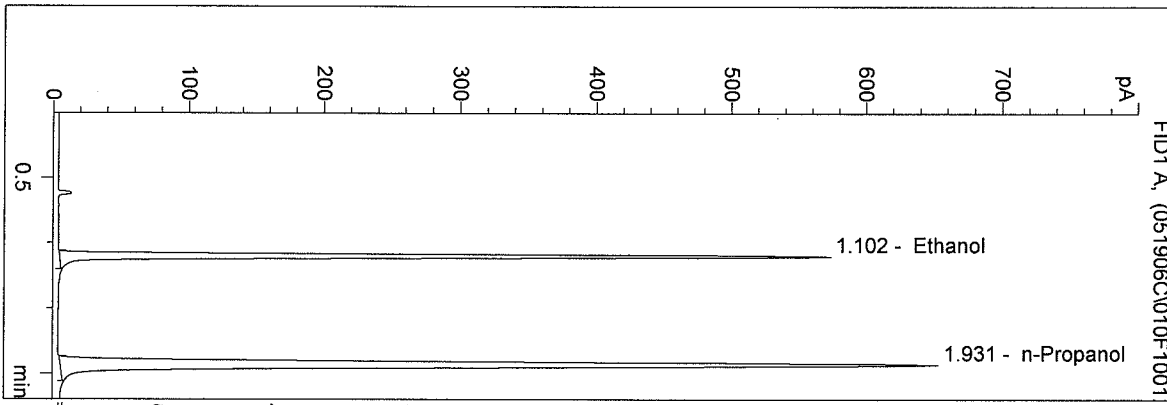


n-Propanol 1.000 g/100ml

D:\HPCHEM\1\METHODS\BLDALCO2.M
 5/19/2006 2:28:52 PM
 Instrument 5
 DB-ALC2

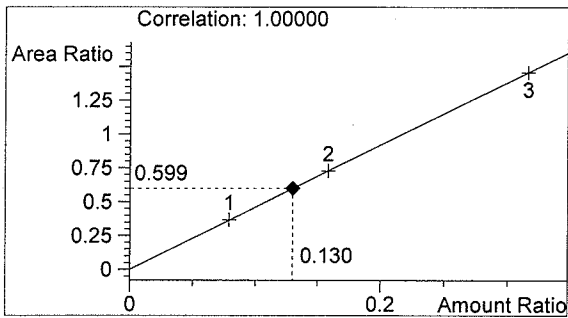
06023
 SIMULATOR SOLUTION

vial # 10

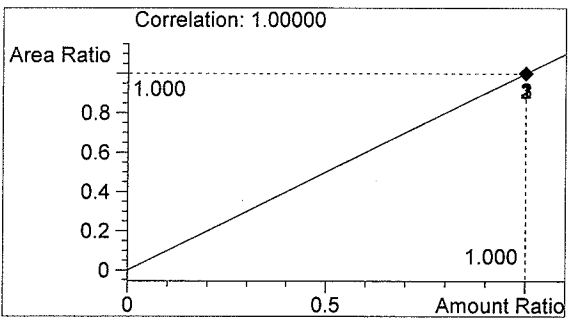


| # | Compound | Area | RT |
|---|------------|------|-------|
| 1 | Ethanol | 1133 | 1.102 |
| 2 | n-Propanol | 1892 | 1.931 |

Totals:



Ethanol 0.130 g/100ml

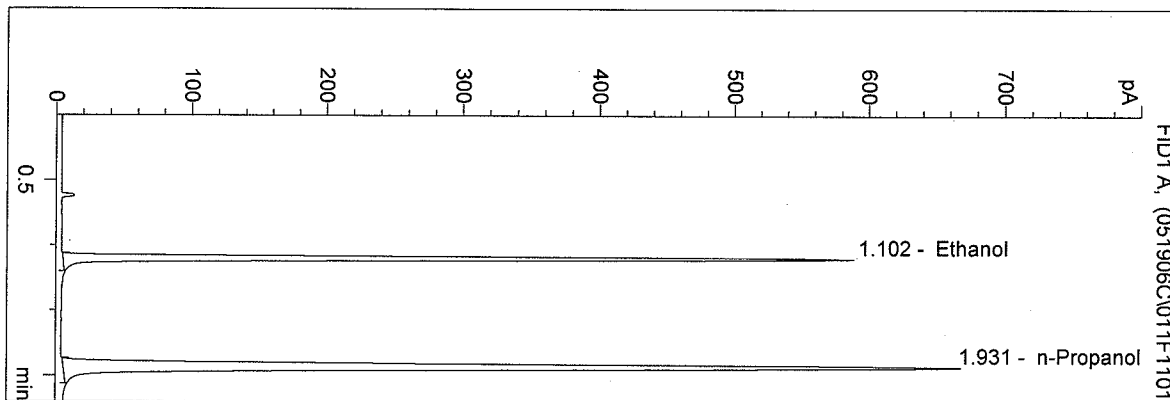


n-Propanol 1.000 g/100ml

D:\HPCHEM\1\METHODS\BLDALCO2.M
 5/19/2006 2:32:10 PM
 Instrument 5
 DB-ALC2

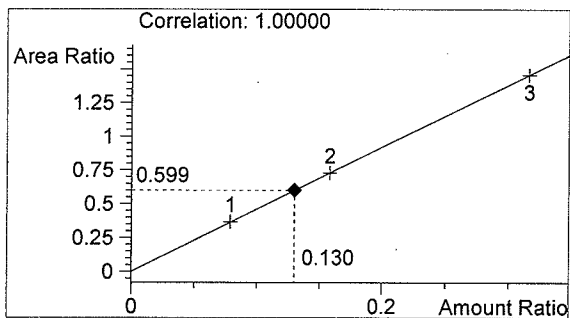
06023
 SIMULATOR SOLUTION

vial # 11

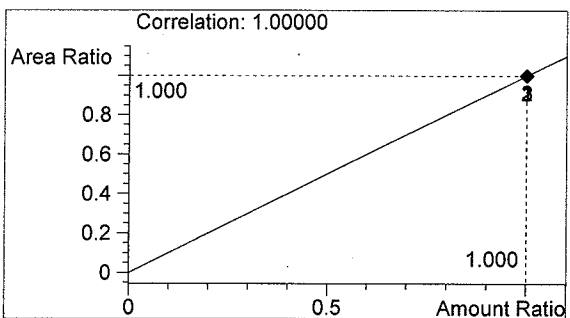


| # | Compound | Area | RT |
|---|------------|------|-------|
| 1 | Ethanol | 1162 | 1.102 |
| 2 | n-Propanol | 1939 | 1.931 |

Totals:



Ethanol 0.130 g/100ml

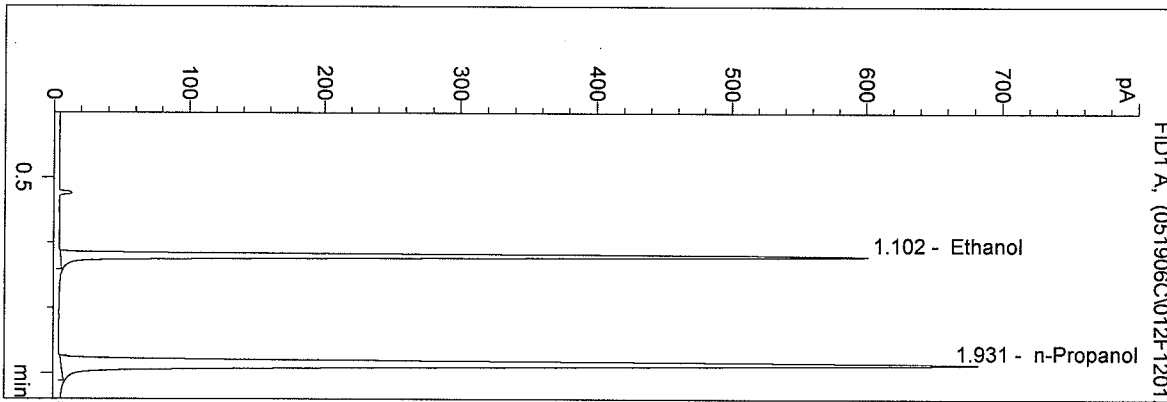


n-Propanol 1.000 g/100ml

D:\HPCHEM\1\METHODS\BLDALCO2.M
 5/19/2006 2:35:25 PM
 Instrument 5
 DB-ALC2

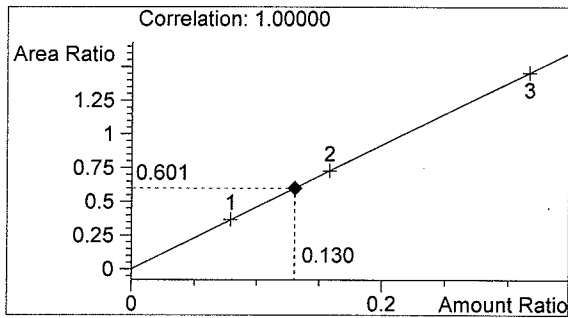
06023
 SIMULATOR SOLUTION

vial # 12

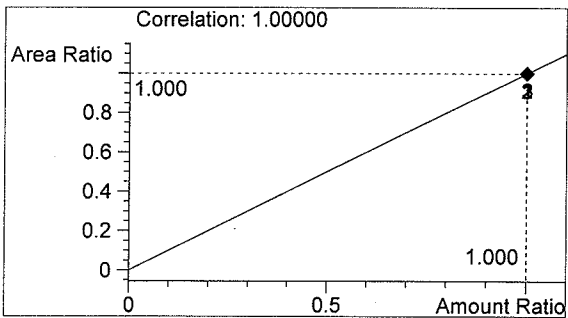


| # | Compound | Area | RT |
|---|------------|------|-------|
| 1 | Ethanol | 1190 | 1.102 |
| 2 | n-Propanol | 1982 | 1.931 |

Totals:



Ethanol 0.130 g/100ml

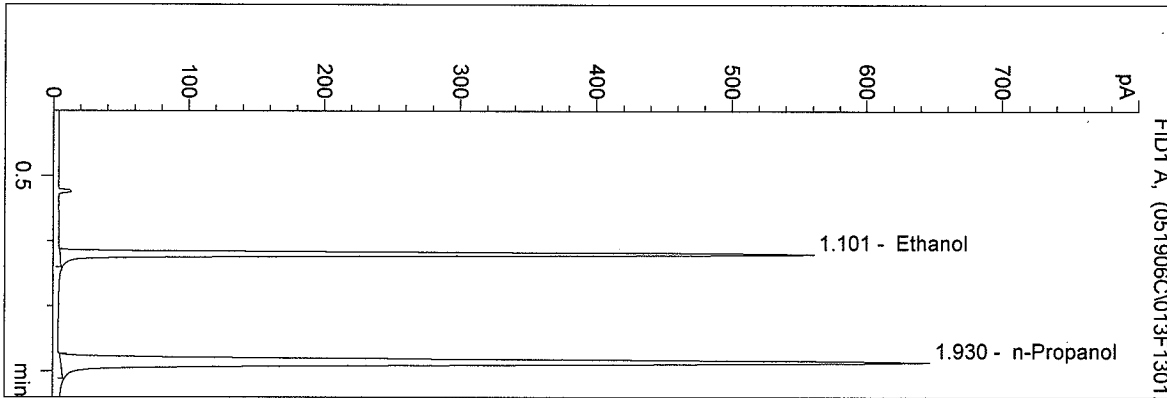


n-Propanol 1.000 g/100ml

D:\HPCHEM\1\METHODS\BLDALCO2.M
 5/19/2006 2:38:40 PM
 Instrument 5
 DB-ALC2

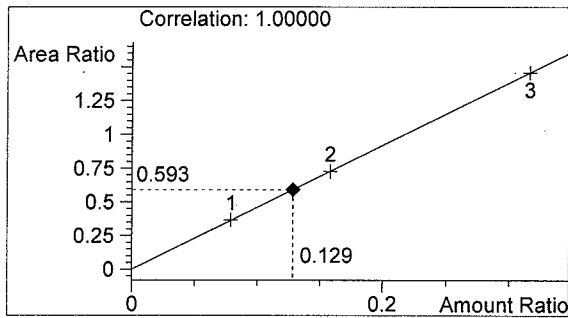
06023
 SIMULATOR SOLUTION

vial # 13

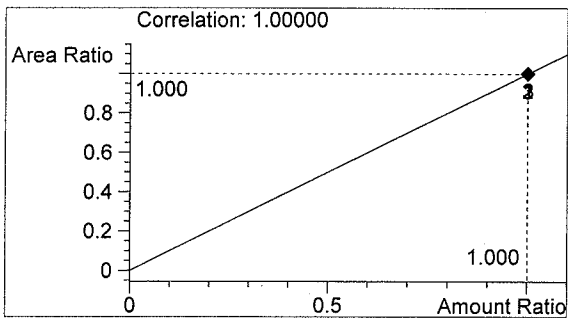


| # | Compound | Area | RT |
|---|------------|------|-------|
| 1 | Ethanol | 1108 | 1.101 |
| 2 | n-Propanol | 1869 | 1.930 |

Totals:



Ethanol 0.129 g/100ml

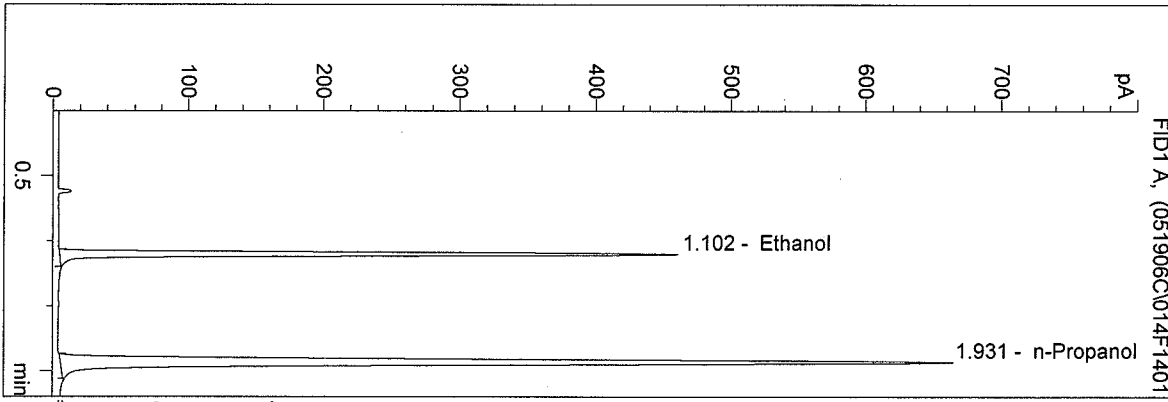


n-Propanol 1.000 g/100ml

D:\HPCHEM\1\METHODS\BLDALCO2.M
 5/19/2006 2:41:54 PM
 Instrument 5
 DB-ALC2

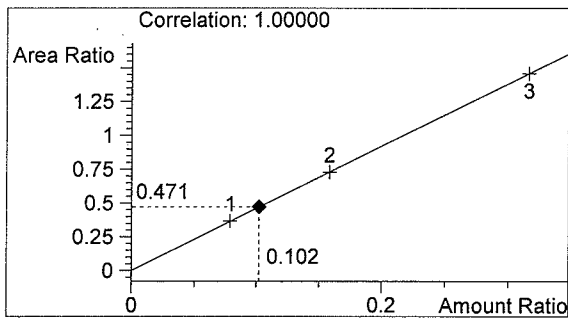
0.10 CONTROL
 SIMULATOR SOLUTION

vial # 14

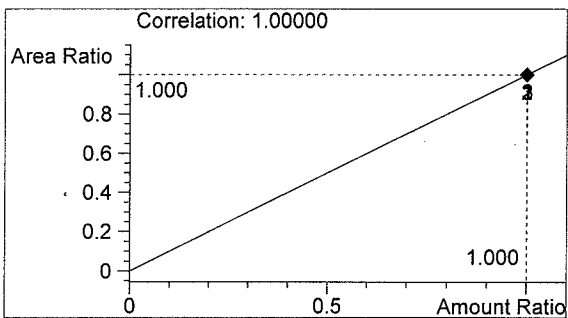


| # | Compound | Area | RT |
|---|------------|------|-------|
| 1 | Ethanol | 908 | 1.102 |
| 2 | n-Propanol | 1927 | 1.931 |

Totals:



Ethanol 0.102 g/100ml

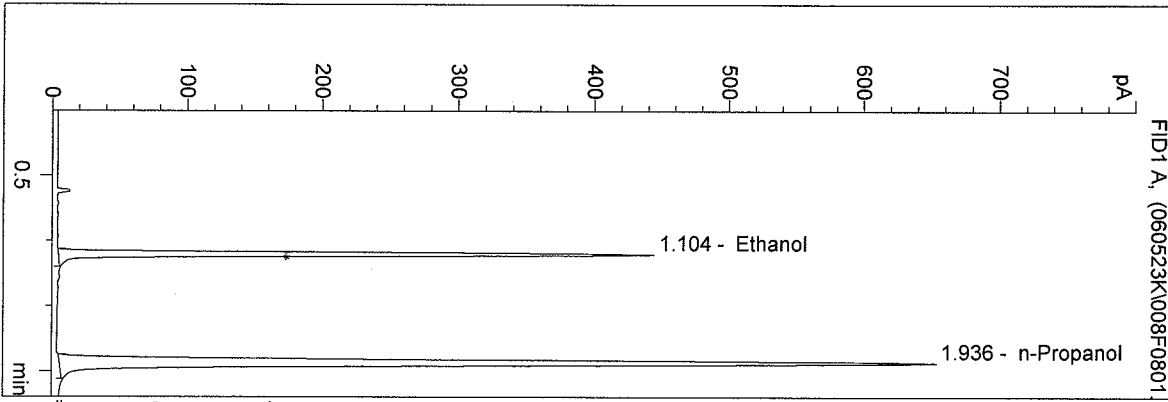


n-Propanol 1.000 g/100ml

D:\HPCHEM\1\METHODS\BLDALCO2.M
 5/23/2006 7:59:28 AM
 Instrument 5,
 DB-ALC2

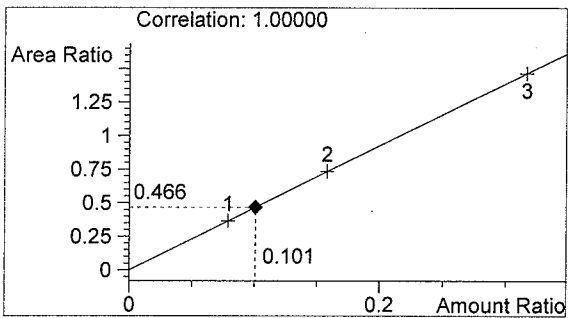
0.10 CTL-KDG
 kgross

vial # 8

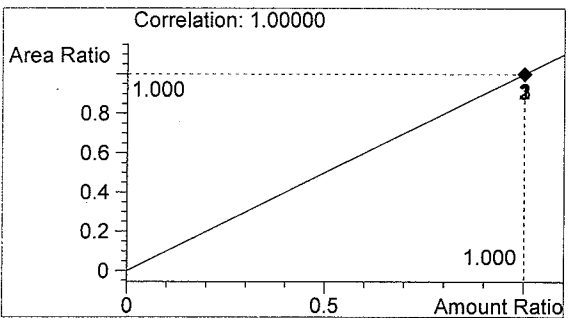


| # | Compound | Area | RT |
|---|------------|------|-------|
| 1 | Ethanol | 884 | 1.104 |
| 2 | n-Propanol | 1895 | 1.936 |

Totals:



Ethanol 0.101 g/100ml

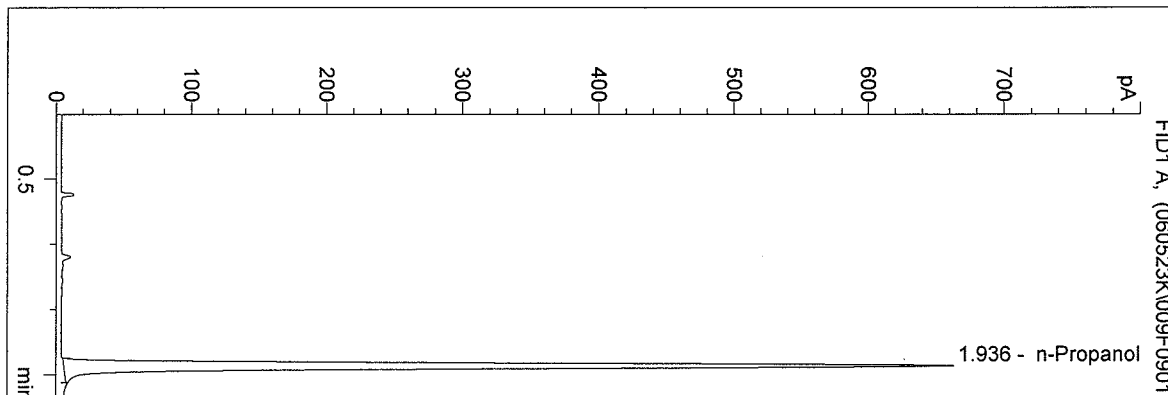


n-Propanol 1.000 g/100ml

D:\HPCHEM\1\METHODS\BLDALCO2.M
 5/23/2006 8:02:43 AM
 Instrument 5
 DB-ALC2

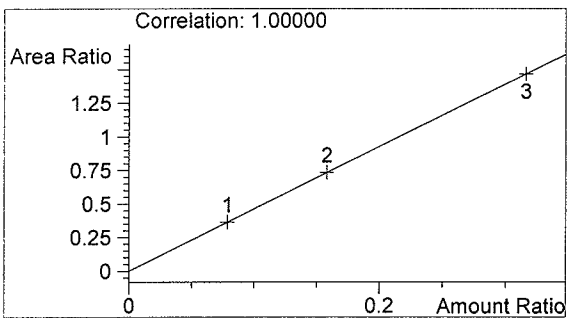
BLANK
 kgross

vial # 9

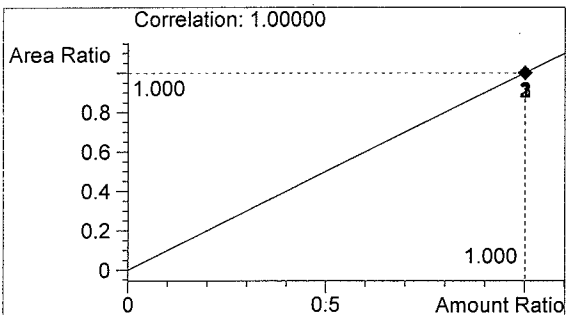


| # | Compound | Area | RT |
|---|------------|------|-------|
| 1 | Ethanol | 0 | 0.000 |
| 2 | n-Propanol | 1921 | 1.936 |

Totals:



Ethanol 0.000 g/100ml

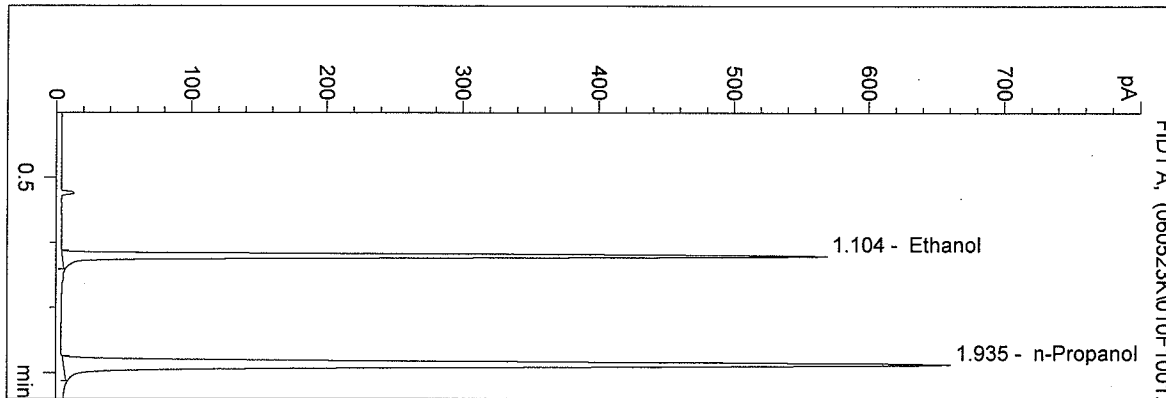


n-Propanol 1.000 g/100ml

D:\HPCHEM\1\METHODS\BLDALCO2.M
 5/23/2006 8:05:57 AM
 Instrument 5
 DB-ALC2

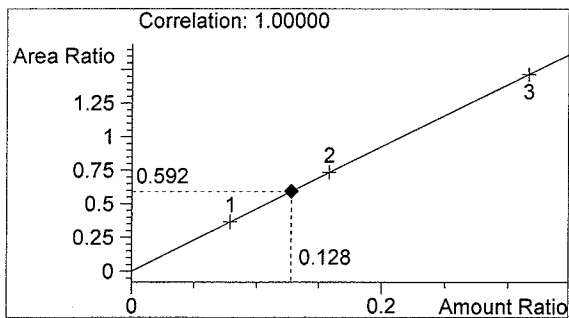
06023qa
 kgross

vial # 10

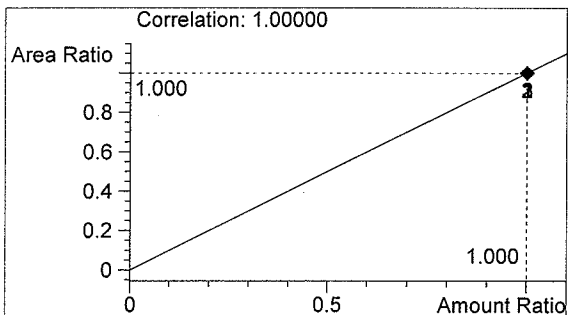


| # | Compound | Area | RT |
|---|------------|------|-------|
| 1 | Ethanol | 1135 | 1.104 |
| 2 | n-Propanol | 1918 | 1.935 |

Totals:



Ethanol 0.128 g/100ml

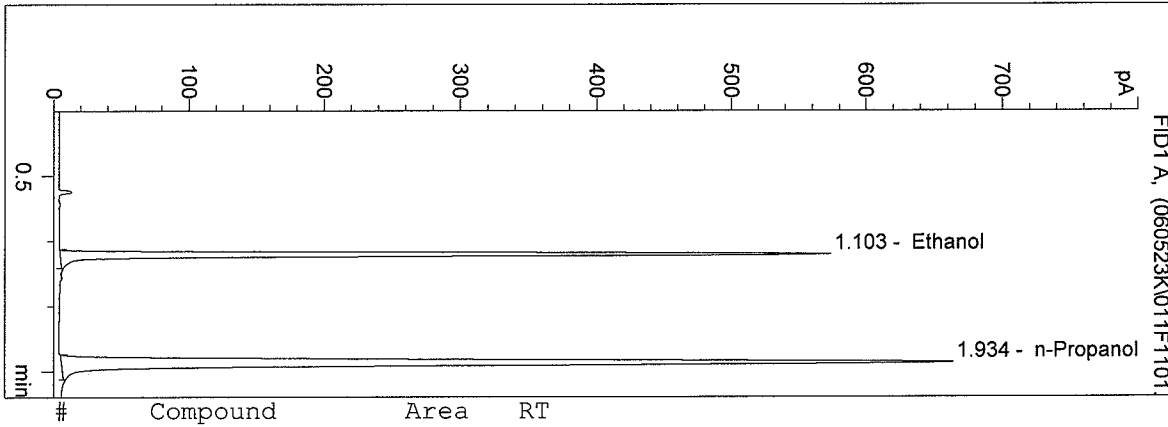


n-Propanol 1.000 g/100ml

D:\HPCHEM\1\METHODS\BLDALCO2.M
 5/23/2006 8:09:16 AM
 Instrument 5
 DB-ALC2

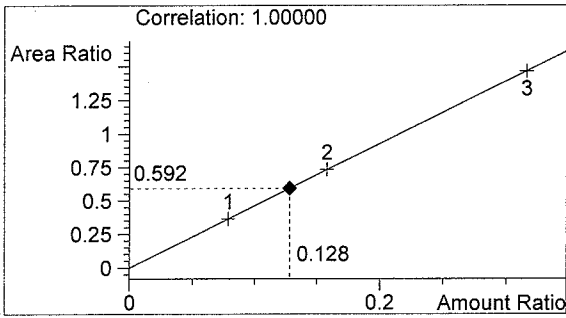
06023qa
 kgross

vial # 11

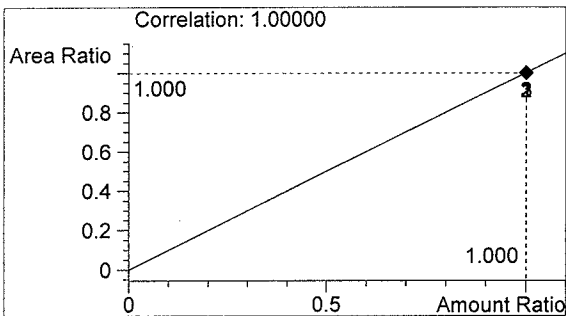


| # | Compound | Area | RT |
|---|------------|------|-------|
| 1 | Ethanol | 1142 | 1.103 |
| 2 | n-Propanol | 1927 | 1.934 |

Totals:



Ethanol 0.128 g/100ml

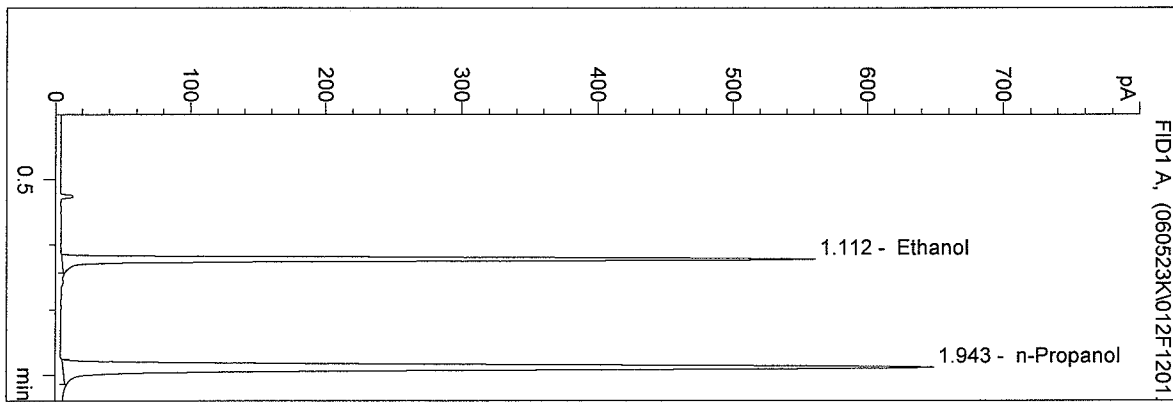


n-Propanol 1.000 g/100ml

D:\HPCHEM\1\METHODS\BLDALCO2.M
 5/23/2006 8:12:33 AM
 Instrument 5
 DB-ALC2

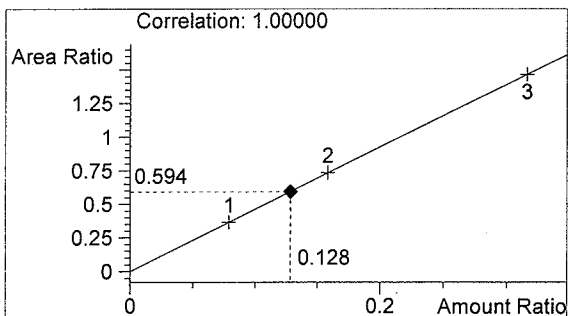
06023qa
 kgross

vial # 12

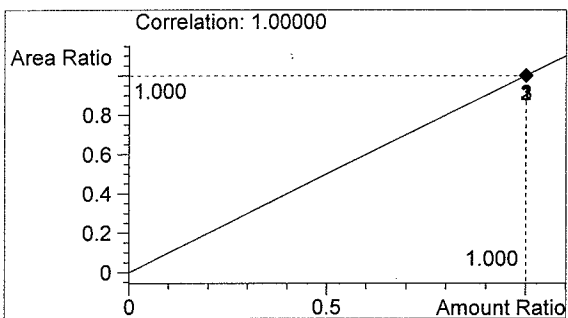


| # | Compound | Area | RT |
|---|------------|------|-------|
| 1 | Ethanol | 1117 | 1.112 |
| 2 | n-Propanol | 1881 | 1.943 |

Totals:



Ethanol 0.128 g/100ml

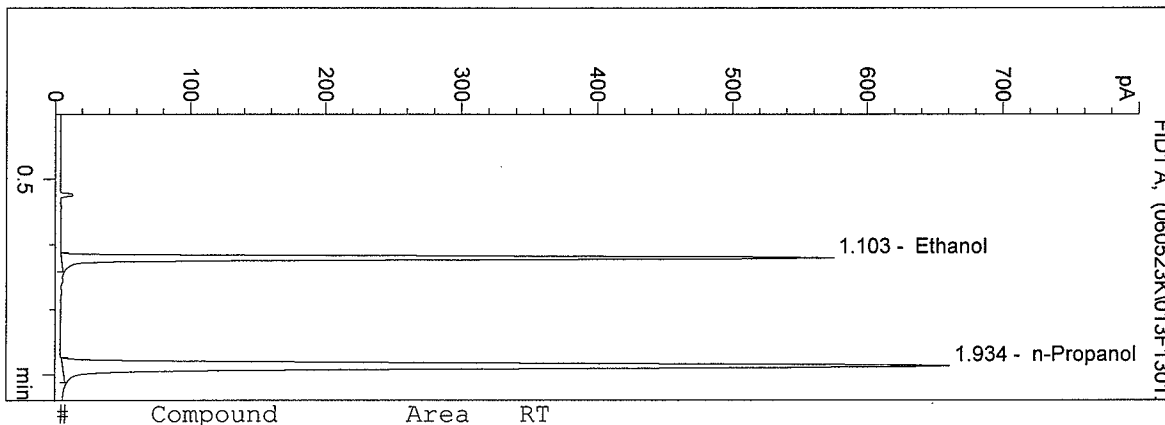


n-Propanol 1.000 g/100ml

D:\HPCHEM\1\METHODS\BLDALCO2.M
 5/23/2006 8:15:47 AM
 Instrument 5
 DB-ALC2

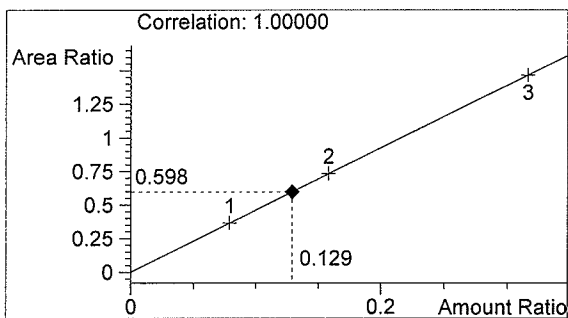
06023qa
 kgross

vial # 13

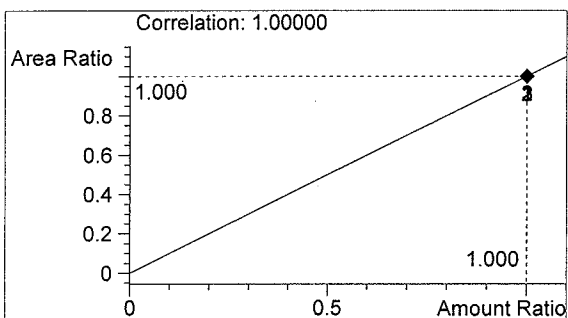


| # | Compound | Area | RT |
|---|------------|------|-------|
| 1 | Ethanol | 1147 | 1.103 |
| 2 | n-Propanol | 1918 | 1.934 |

Totals:



Ethanol 0.129 g/100ml

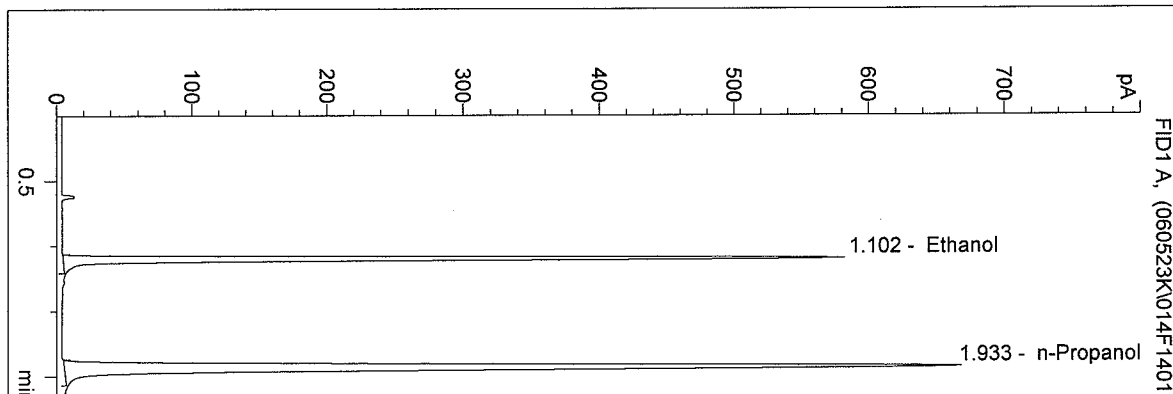


n-Propanol 1.000 g/100ml

D:\HPCHEM\1\METHODS\BLDALCO2.M
 5/23/2006 8:19:00 AM
 Instrument 5
 DB-ALC2

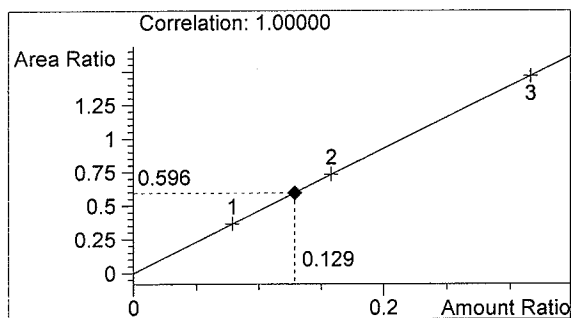
06023qa
 kgross

vial # 14

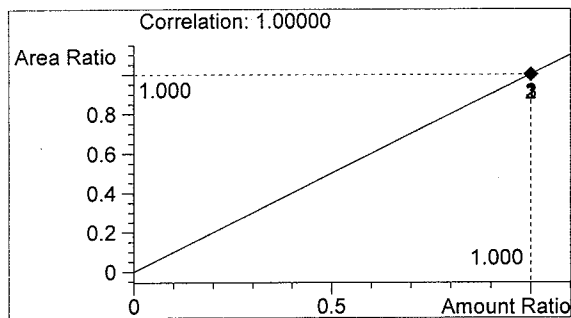


| # | Compound | Area | RT |
|---|------------|------|-------|
| 1 | Ethanol | 1154 | 1.102 |
| 2 | n-Propanol | 1936 | 1.933 |

Totals:



Ethanol 0.129 g/100ml

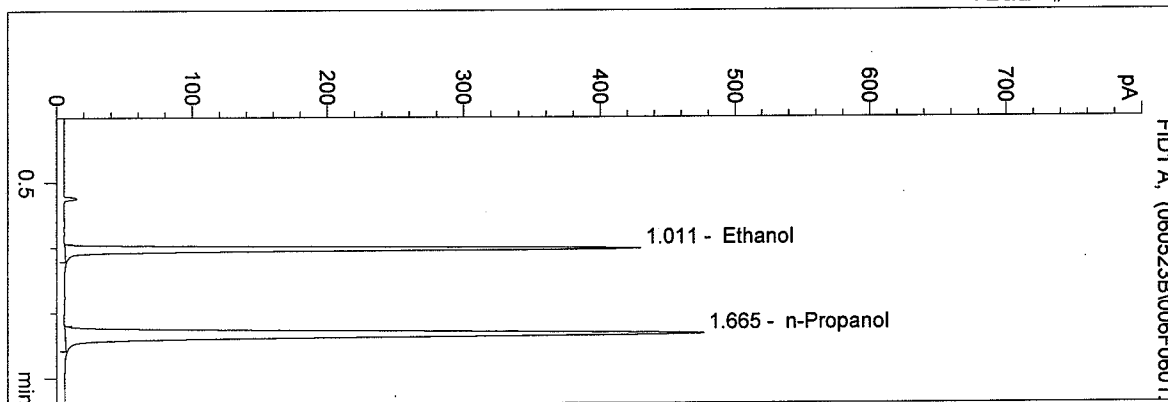


n-Propanol 1.000 g/100ml

D:\HPCHEM\1\METHODS\BLDALCO.M
 5/23/2006 3:05:11 PM
 Instrument 4
 DB-ALC1

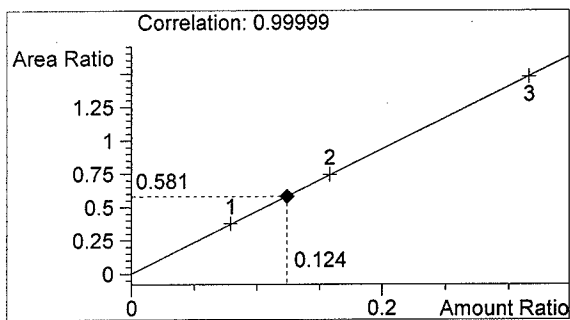
06023-a QA
 Brianne E. Akins

vial # 6

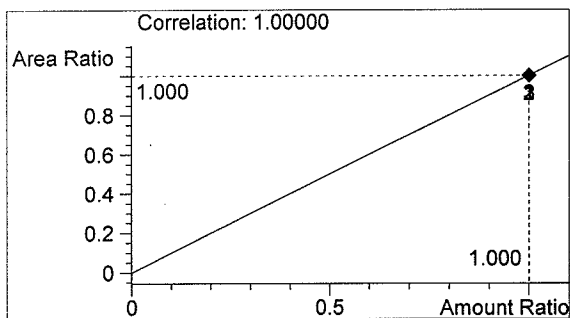


| # | Compound | Area | RT |
|---|------------|------|-------|
| 1 | Ethanol | 861 | 1.011 |
| 2 | n-Propanol | 1480 | 1.665 |

Totals:



Ethanol 0.124 g/100ml

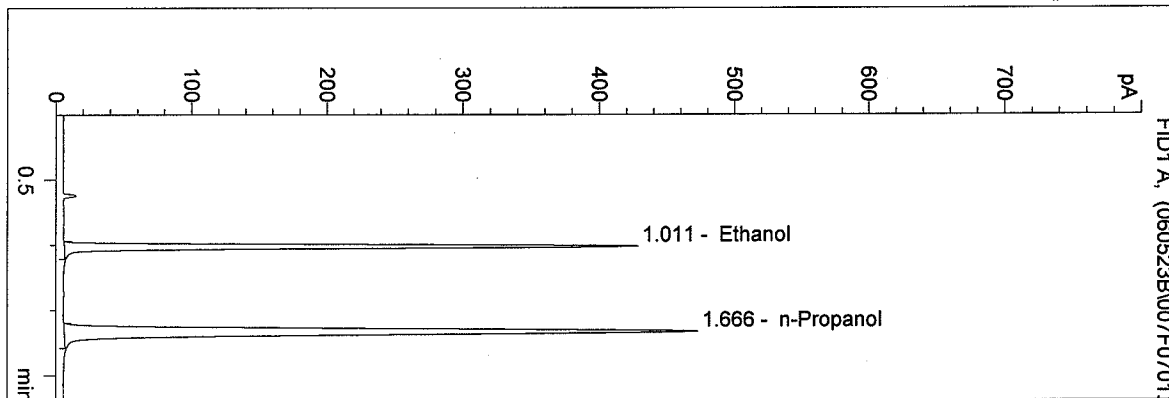


n-Propanol 1.000 g/100ml

D:\HPCHEM\1\METHODS\BLDALCO.M
 5/23/2006 3:10:41 PM
 Instrument 4
 DB-ALC1

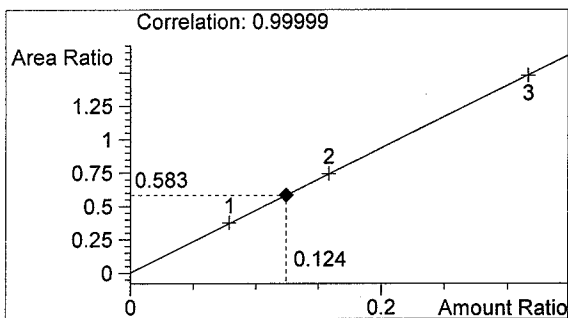
06023-b QA
 Brianne E. Akins

vial # 7

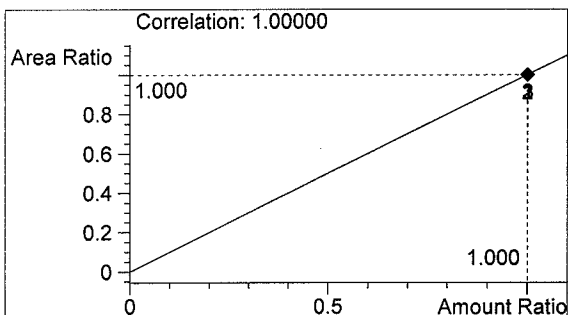


| # | Compound | Area | RT |
|---|------------|------|-------|
| 1 | Ethanol | 856 | 1.011 |
| 2 | n-Propanol | 1468 | 1.666 |

Totals:



Ethanol 0.124 g/100ml

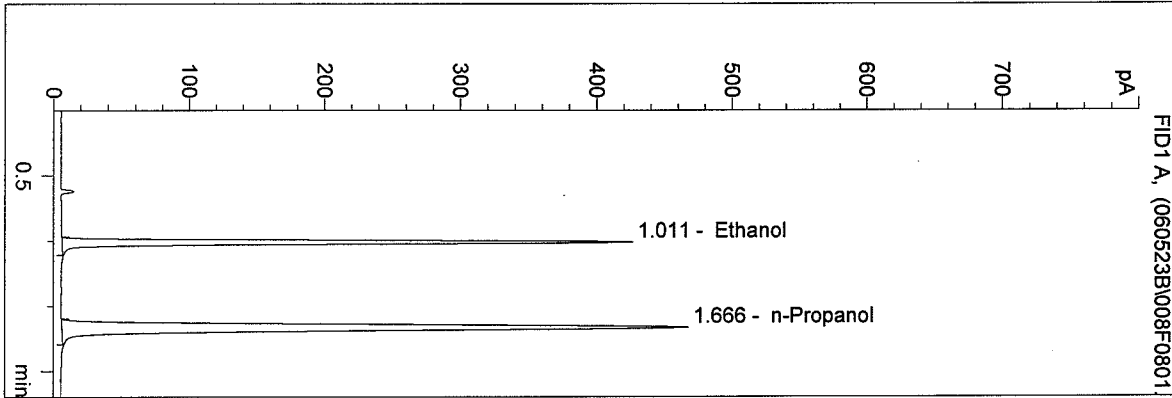


n-Propanol 1.000 g/100ml

D:\HPCHEM\1\METHODS\BLDALCO.M
 5/23/2006 3:13:55 PM
 Instrument 4
 DB-ALC1

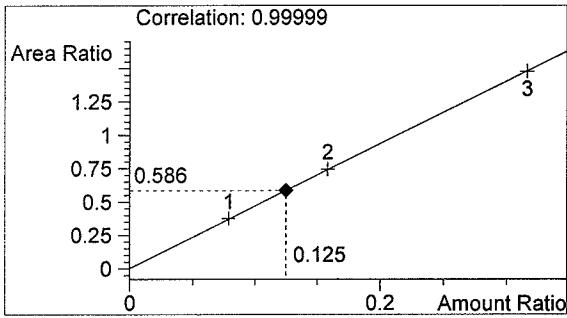
06023-c QA
 Brianne E. Akins

vial # 8

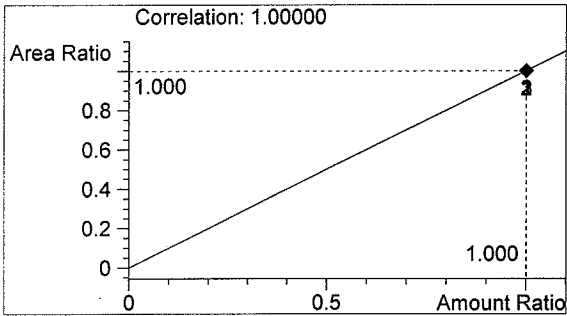


| # | Compound | Area | RT |
|---|------------|------|-------|
| 1 | Ethanol | 854 | 1.011 |
| 2 | n-Propanol | 1456 | 1.666 |

Totals:



Ethanol 0.125 g/100ml

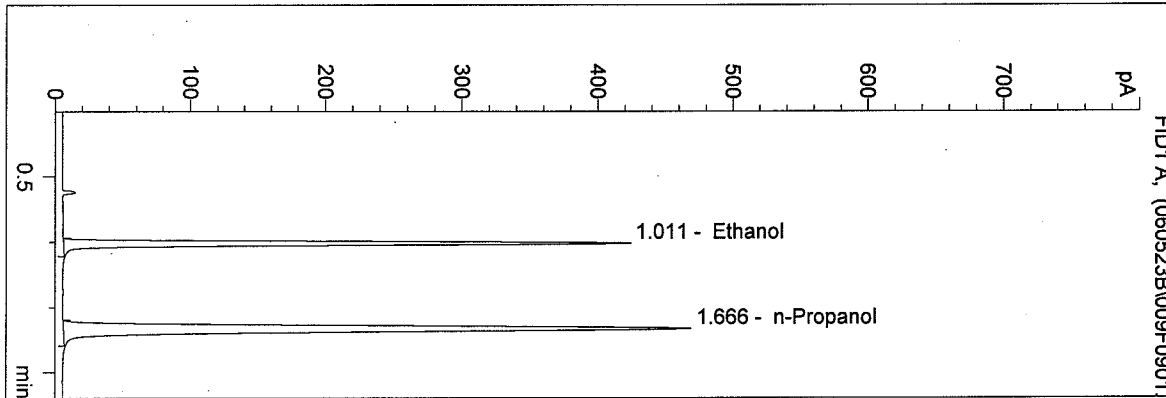


n-Propanol 1.000 g/100ml

D:\HPCHEM\1\METHODS\BLDALCO.M
 5/23/2006 3:17:11 PM
 Instrument 4
 DB-ALC1

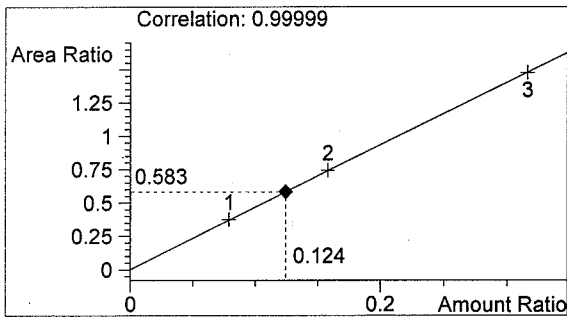
06023-d QA
 Brianne E. Akins

vial # 9

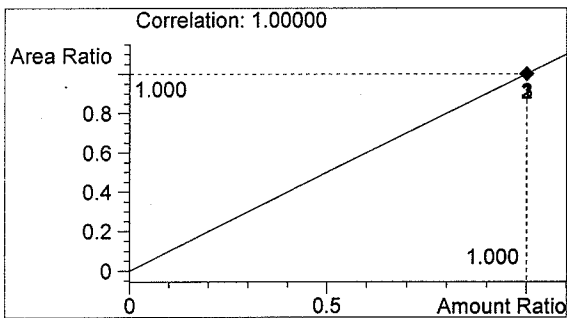


| # | Compound | Area | RT |
|---|------------|------|-------|
| 1 | Ethanol | 849 | 1.011 |
| 2 | n-Propanol | 1457 | 1.666 |

Totals:



Ethanol 0.124 g/100ml

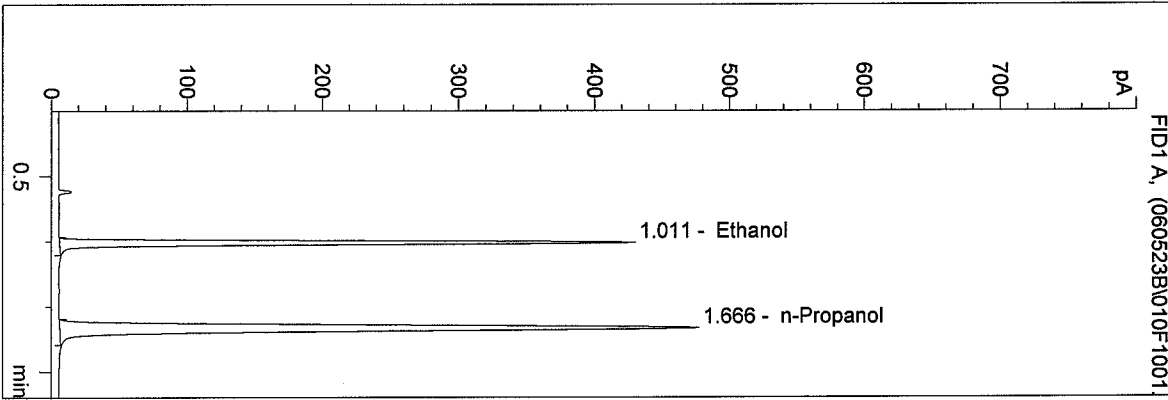


n-Propanol 1.000 g/100ml

D:\HPCHEM\1\METHODS\BLDALCO.M
 5/23/2006 3:20:27 PM
 Instrument 4
 DB-ALC1

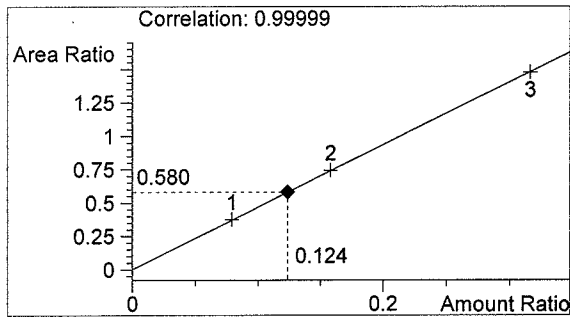
06023-e QA
 Brianne E. Akins

vial # 10

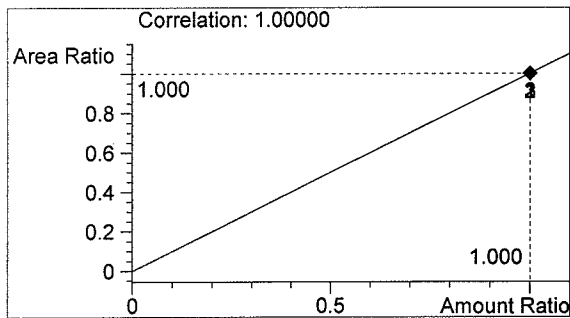


| # | Compound | Area | RT |
|---|------------|------|-------|
| 1 | Ethanol | 861 | 1.011 |
| 2 | n-Propanol | 1483 | 1.666 |

Totals:



Ethanol 0.124 g/100ml

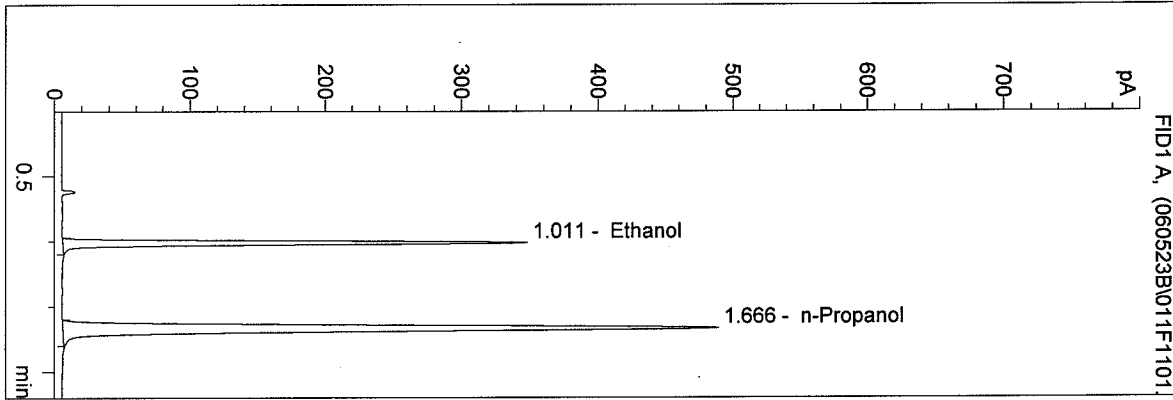


n-Propanol 1.000 g/100ml

D:\HPCHEM\1\METHODS\BLDALCO.M
 5/23/2006 3:23:42 PM
 Instrument 4
 DB-ALC1

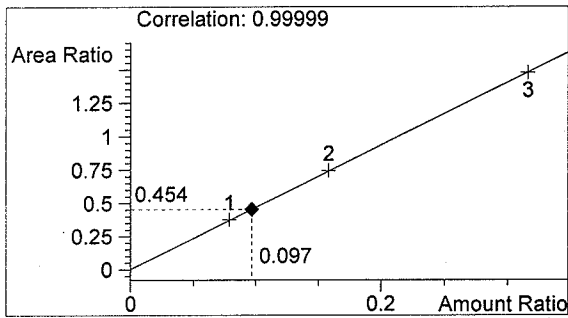
0.10 CONTROL-ba
 Brianne E. Akins

vial # 11

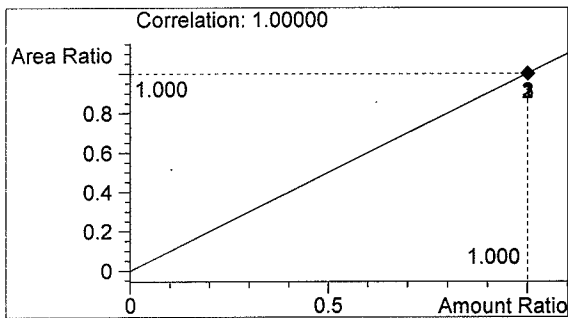


| # | Compound | Area | RT |
|---|------------|------|-------|
| 1 | Ethanol | 691 | 1.011 |
| 2 | n-Propanol | 1521 | 1.666 |

Totals:



Ethanol 0.097 g/100ml

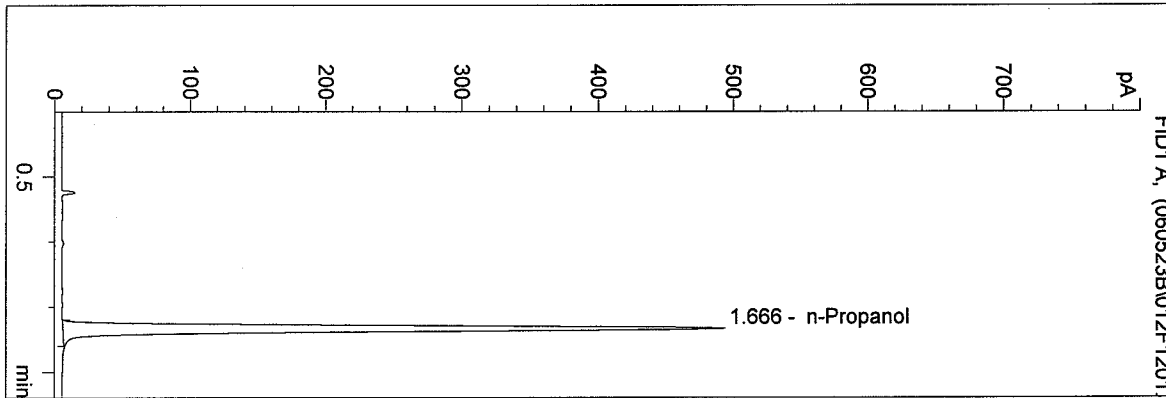


n-Propanol 1.000 g/100ml

D:\HPCHEM\1\METHODS\BLDALCO.M
 5/23/2006 3:26:55 PM
 Instrument 4
 DB-ALC1

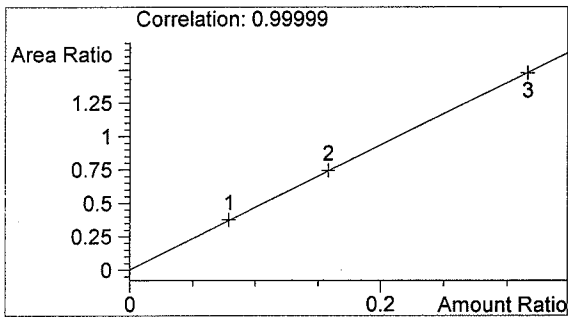
blank
 Brianne E. Akins

vial # 12

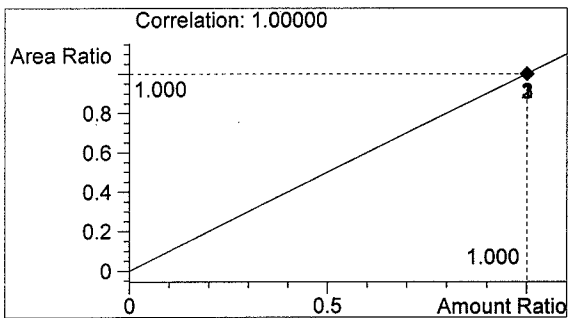


| # | Compound | Area | RT |
|---|------------|------|-------|
| 1 | Ethanol | 0 | 0.000 |
| 2 | n-Propanol | 1535 | 1.666 |

Totals:



Ethanol 0.000 g/100ml



n-Propanol 1.000 g/100ml