
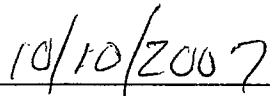
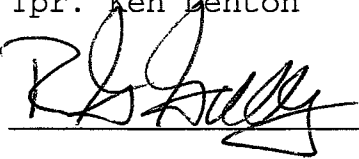



Notice of Simulator Solution File Review

At the request of the State Toxicologist a review of the following simulator solution records has been accomplished. The following file consists of simulator solution analyses performed and completed by the State Toxicology Laboratory for a specific batch number. The file contains the simulator solution data entry form along with a file review record and the chromatograms generated by the Toxicology Laboratory during the analyses of the solutions. This file has been reviewed by Tpr. Ken Denton and Mr. Rod Gullberg for accuracy and completeness. Where computations regarding simulator solution values have been found to be incorrect, the corrected values have been written in by Mr. Rod Gullberg along with initials and date. The corrected values were then evaluated to ensure that the solution still conformed to those standards established by the State Toxicologist.

Where computation values changed for a specific batch number, the analysts employed by the State Toxicology Laboratory were asked to review the revisions, ensure the solution complied with the criteria established by the State Toxicologist and then re-sign their affidavit. Their signature will appear on their original affidavit along with a statement regarding their review of the results.

Where a dating error occurred that analyst will have made the correction on the original data form including their initials and date and then re-signed their original affidavit.

	
Tpr. Ken Denton	Date
	
Rod G. Gullberg	Date

Washington State Toxicology Laboratory
Simulator Solution Data Entry Review Form

Reviewer KEN BENTON / ROY GULLBERG Date 10-5-07
Location TOX LAB LEAVER Batch Number 06010

Form Review Criteria

Preparation date precedes all analysis dates: Okay X Not Okay ___
Data entry corresponds to all chromatograms: Okay X Not Okay ___
All signatures present: Okay X Not Okay ___

Computations:



Avg. solution concentration: Correct X Not Correct ___
Standard deviation: Correct X Not Correct ___
Range: Correct X Not Correct ___
Precision: Correct X Not Correct ___
Equivalent vapor concent.: Correct X Not Correct ___
External Control Information
(lot # and future date): Correct X Not Correct ___

Complies with accuracy and precision requirements established by the
State Toxicologist: Yes X No ___

Corrections Necessary:

DATE OF ANALYSIS FOR BMAJ C. INCORRECT

Comments:

Reviewer Signature:  Date: 10-5-07
Reviewer Signature:  Date: 10/5/2007

WASHINGTON STATE TOXICOLOGY LABORATORY
FORENSIC LABORATORY SERVICES BUREAU
 WASHINGTON STATE PATROL
 2203 AIRPORT WAY S, SUITE 360
 SEATTLE, WASHINGTON 98134-2027
 (206) 262-6100 FAX (206) 262-6145

Preparation and certification of **0.04** g/210L Quality Assurance solution
 Batch number **06010** Date: 2/14/2006
 Preparation: 11.1 mL of absolute ethyl alcohol diluted to 18 Liters with water
 Concentration of ethanol (g/100mL) measured by gas chromatography:

	Anal 1	Anal 2	Anal 3	Anal 4	Anal 5	Anal 6	Anal 7	Anal 8	Anal 9	Anal 10	Anal 11	Anal 12	Anal 13	Anal 14	Anal 15	Anal 16
1	0.049	0.050	0.048													
2	0.049	0.050	0.049													
3	0.050	0.049	0.048													
4	0.049	0.049	0.048													
5	0.049	0.050	0.047													
Ctrl	0.099	0.100	0.098													

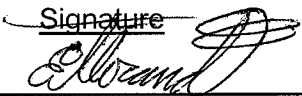
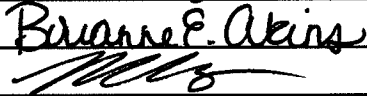
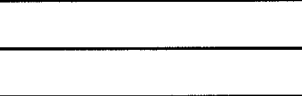
External Control:

Lot #: A03592820 Exp date: 07/09
 Target concentration: 0.10 g/100mL

Statistics:

Avg. solution concent.: 0.0489 g/100 mL
 SD: 0.00088
 Range (3xSD): 0.0462 to 0.0516
 Precision CV (%): 1.8072 %

Equivalent vapor concent.: 0.0398 g/210L

Analyst	Name	Signature	Date
1	Estuardo J. Miranda		02/15/2006
2	Brianne Akins		02/15/2006
3	Brian Capron		2-16-06 02/15/2006 ²⁰ 10:4:07
4			
5			
6			
7			
8			
9			
10			
11			
12			
13			
14			
15			
16			

Prepared by: Estuardo J. Miranda according to the approved protocol



STATE OF WASHINGTON
WASHINGTON STATE PATROL
WASHINGTON STATE TOXICOLOGY LABORATORY

2203 Airport Way South, Suite 360 • Seattle, Washington 98134-2027 • (206) 262-6100 • FAX (206) 262-6145

DATAMASTER QUALITY ASSURANCE SOLUTION
CERTIFICATION

I, Estuardo J. Miranda, do certify under penalty of perjury that:

I am employed by the Washington State Toxicology Laboratory, and a part of my responsibilities includes preparing and testing the alcohol solutions for the DataMaster breath test instrument.

I possess the following qualifications: Bachelor of Science in Chemistry, Master of Science in Zoology, eight years experience in biochemical research and seven years experience in Forensic Toxicology.

The quality assurance solution, Lot Number 06010, was prepared in the Washington State Toxicology Laboratory on 2/14/2006. I examined and tested this solution. The mean concentration of the alcohol was 0.0489 grams per 100ml.

Dated: 3/7/2006
Seattle, WA

Estuardo J. Miranda
Forensic Toxicologist

EM/ks
EMQA

A review of solution batch records was recently completed. After this review, I checked the file for this solution and reviewed all changes that were made. I found that the solution still conformed to those standards established by the State Toxicologist for the certification of simulator solutions.

10-10-2007



STATE OF WASHINGTON

WASHINGTON STATE PATROL

WASHINGTON STATE TOXICOLOGY LABORATORY

2203 Airport Way South, Suite 360 • Seattle, Washington 98134-2027 • (206) 262-6100 • FAX (206) 262-6145

DATAMASTER QUALITY ASSURANCE SOLUTION
CERTIFICATION

I, Brianne E. Akins, do certify under penalty of perjury that:

I am employed by the Washington State Toxicology Laboratory, and a part of my responsibilities includes preparing and testing the alcohol solutions for the DataMaster breath test instrument.

I possess the following qualifications: BS degree in Biology.

The quality assurance solution, Lot Number 06010, was prepared in the Washington State Toxicology Laboratory on 2/14/2006. I examined and tested this solution. The mean concentration of the alcohol was 0.0489 grams per 100ml.

Dated: 3/7/2006
Seattle, WA

Brianne E. Akins

Brianne E. Akins
Forensic Toxicologist

BEA/ks
BAQA

A review of solution batch records was recently completed. After this review, I checked the file for this solution and reviewed all changes that were made. I found that the solution still conformed to those standards established by the State Toxicologist for the certification of simulator solutions.

Brianne E. Akins 10-507





STATE OF WASHINGTON
WASHINGTON STATE PATROL
WASHINGTON STATE TOXICOLOGY LABORATORY

2203 Airport Way South, Suite 360 • Seattle, Washington 98134-2027 • (206) 262-6100 • FAX (206) 262-6145

DATAMASTER QUALITY ASSURANCE SOLUTION
CERTIFICATION

I, Brian Capron, do certify under penalty of perjury that:

I am employed by the Washington State Toxicology Laboratory, and a part of my responsibilities includes preparing and testing the alcohol solutions for the DataMaster breath test instrument.

I possess the following qualifications: BS degree in Biology and nine years of experience in forensic toxicology.

The quality assurance solution, Lot Number 06010, was prepared in the Washington State Toxicology Laboratory on 2/14/2006. I examined and tested this solution. The mean concentration of the alcohol was 0.0489 grams per 100ml.

Dated: 3/7/2006
Seattle, WA

Brian Capron
Forensic Toxicologist

BC/ks
BCQA

A review of solution batch records was recently completed. After this review, I checked the file for this solution and reviewed all changes that were made. I found that the solution still conformed to those standards established by the State Toxicologist for the certification of simulator solutions.

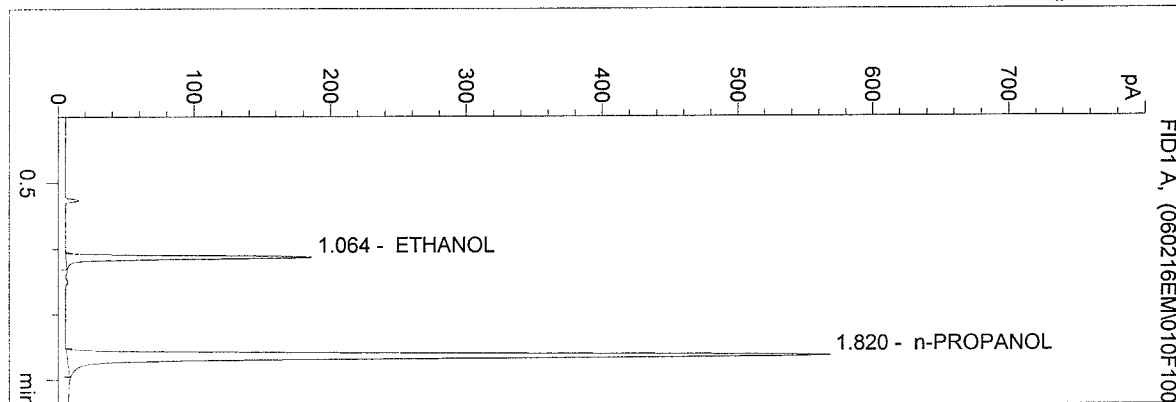


WASHINGTON STATE TOXICOLOGY LABORATORY

C:\HPCHEM\2\METHODS\BLDALCO3.M
 2/15/2006 12:50:25 PM
 Instrument 3
 db-alc2

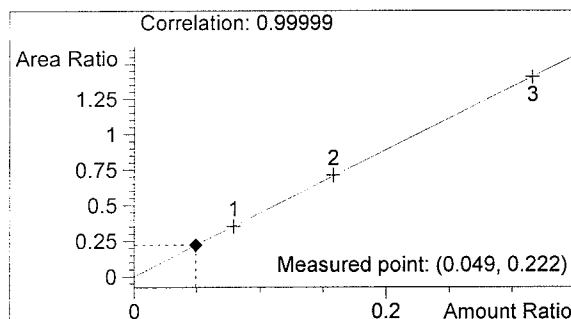
QA 06010-1
 Estuardo J. Miranda

vial # 10



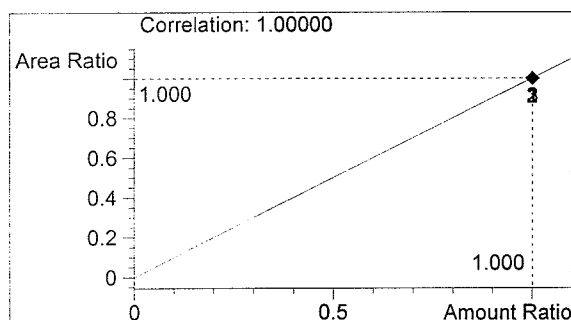
#	Compound	Area	RT
1	ETHANOL	344	1.064
2	n-PROPANOL	1552	1.820

Totals:



ETHANOL

0.049 g/100ml



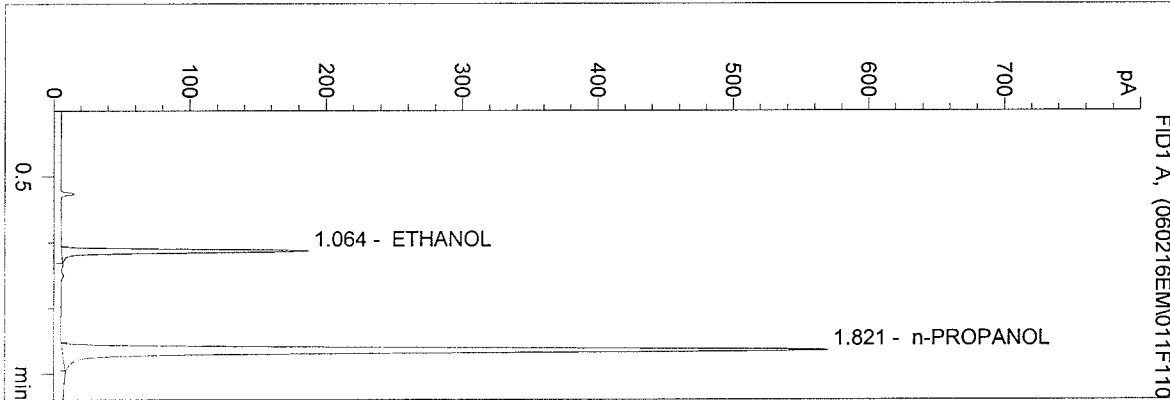
n-PROPANOL

1.000 g/100ml

C:\HPCHEM\2\METHODS\BLDALCO3.M
 2/15/2006 12:53:32 PM
 Instrument 3
 db-alc2

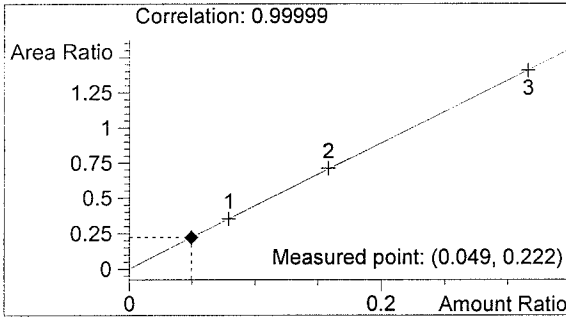
QA 06010-2
 Estuardo J. Miranda

vial # 11



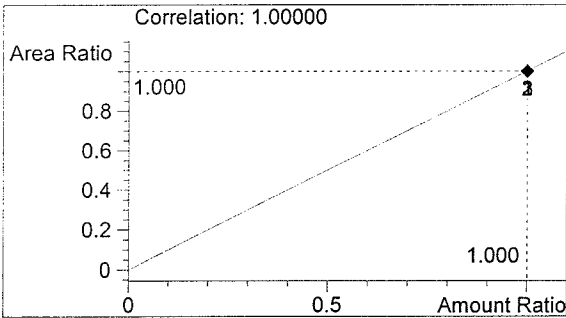
#	Compound	Area	RT
1	ETHANOL	347	1.064
2	n-PROPANOL	1559	1.821

Totals:



ETHANOL

0.049 g/100ml



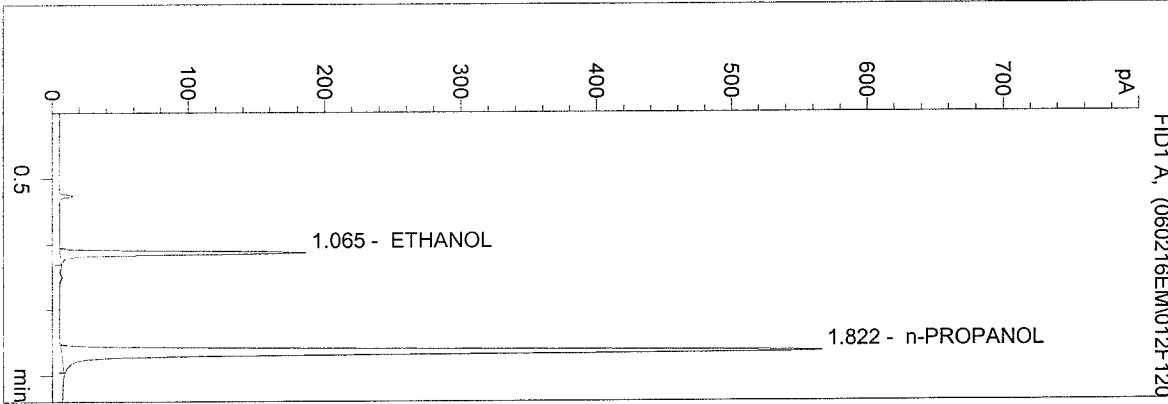
n-PROPANOL

1.000 g/100ml

C:\HPCHEM\2\METHODS\BLDALCO3.M
 2/15/2006 12:56:39 PM
 Instrument 3
 db-alc2

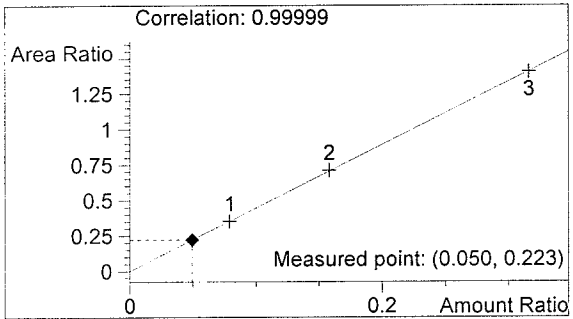
QA 06010-3
 Estuardo J. Miranda

vial # 12



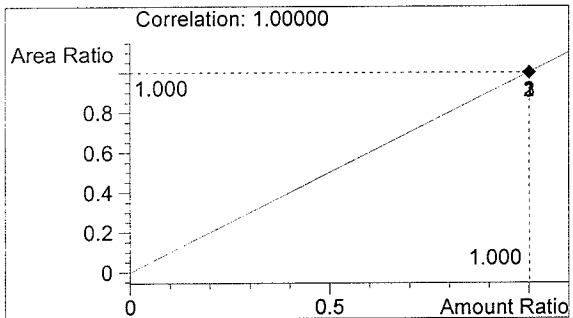
#	Compound	Area	RT
1	ETHANOL	344	1.065
2	n-PROPANOL	1544	1.822

Totals:



ETHANOL

0.050 g/100ml



n-PROPANOL

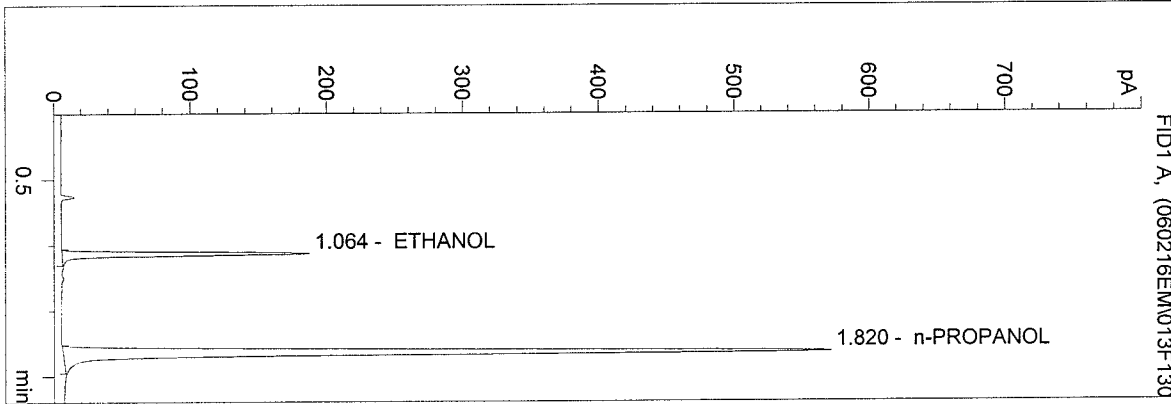
1.000 g/100ml

WASHINGTON STATE TOXICOLOGY LABORATORY

C:\HPCHEM\2\METHODS\BLDALCO3.M
 2/15/2006 12:59:46 PM
 Instrument 3
 db-alc2

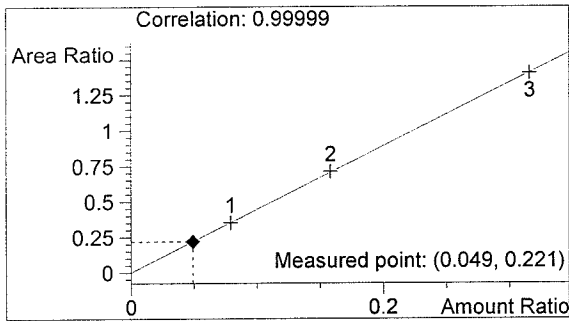
QA 06010-4
 Estuardo J. Miranda

vial # 13



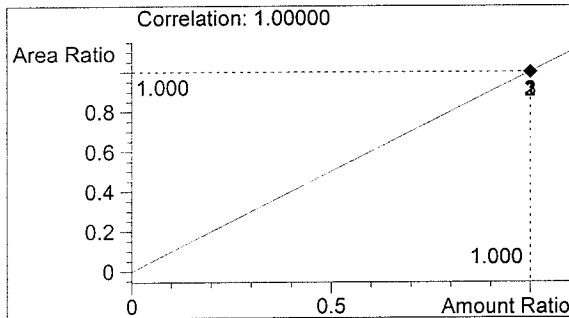
#	Compound	Area	RT
1	ETHANOL	345	1.064
2	n-PROPANOL	1563	1.820

Totals:



ETHANOL

0.049 g/100ml



n-PROPANOL

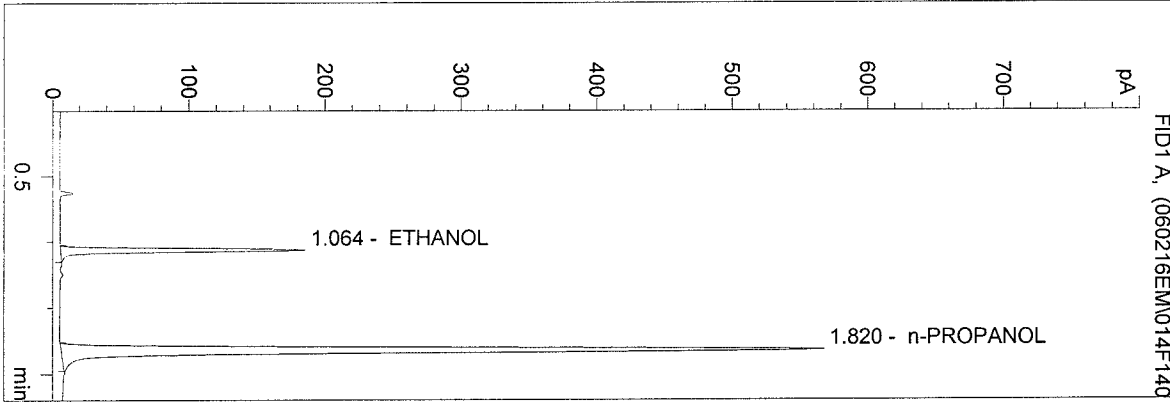
1.000 g/100ml

WASHINGTON STATE TOXICOLOGY LABORATORY

C:\HPCHEM\2\METHODS\BLDALCO3.M
 2/15/2006 1:02:53 PM
 Instrument 3
 db-alc2

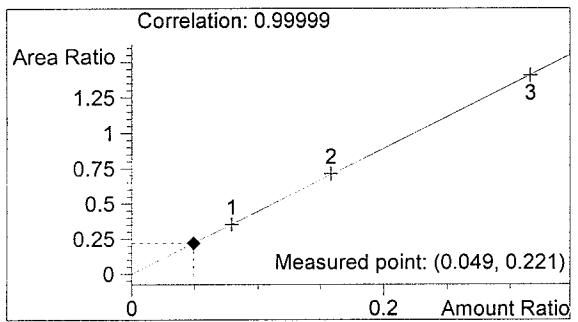
QA 06010-5
 Estuardo J. Miranda

vial # 14



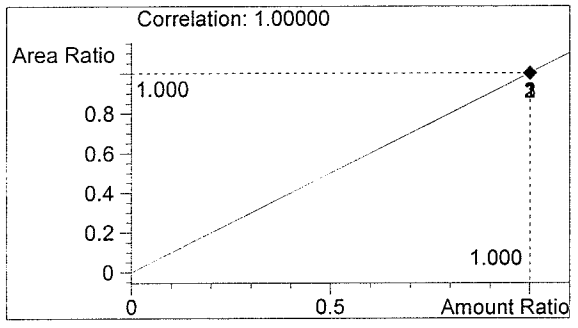
#	Compound	Area	RT
1	ETHANOL	343	1.064
2	n-PROPANOL	1553	1.820

Totals:



ETHANOL

0.049 g/100ml



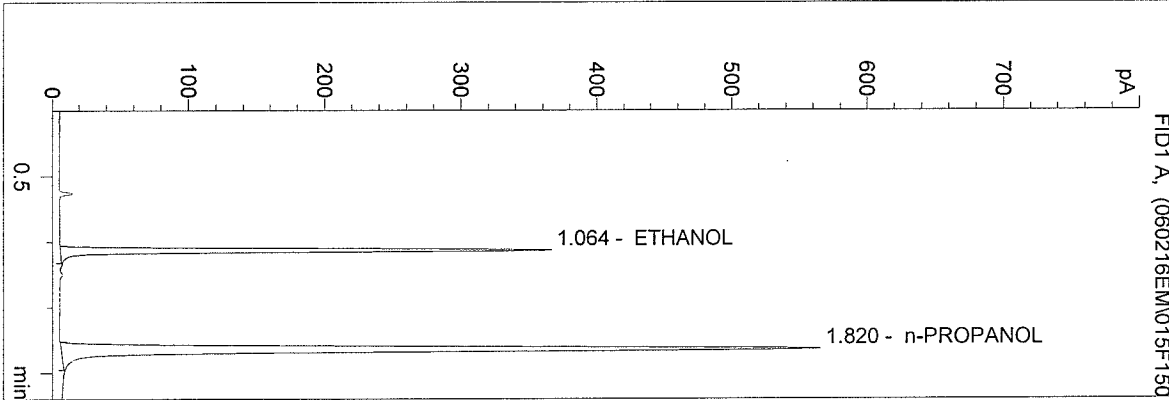
n-PROPANOL

1.000 g/100ml

C:\HPCHEM\2\METHODS\BLDALCO3.M
 2/15/2006 1:06:01 PM
 Instrument 3
 db-alc2

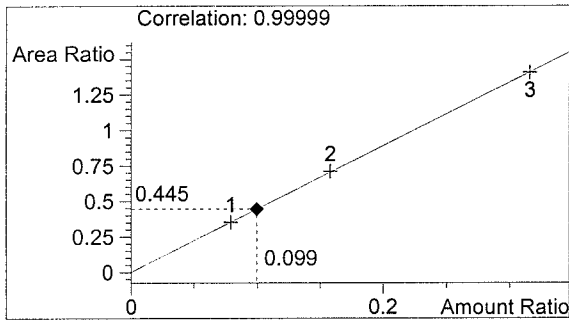
0.100 Control
 Estuardo J. Miranda

vial # 15



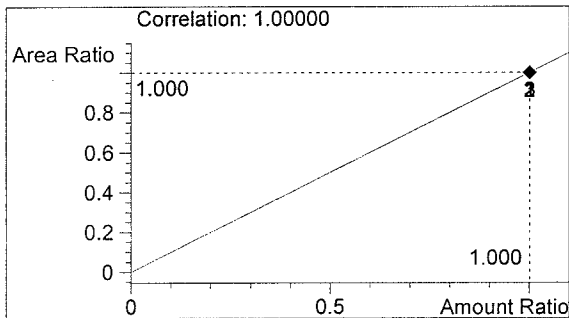
#	Compound	Area	RT
1	ETHANOL	687	1.064
2	n-PROPANOL	1545	1.820

Totals:



ETHANOL

0.099 g/100ml



n-PROPANOL

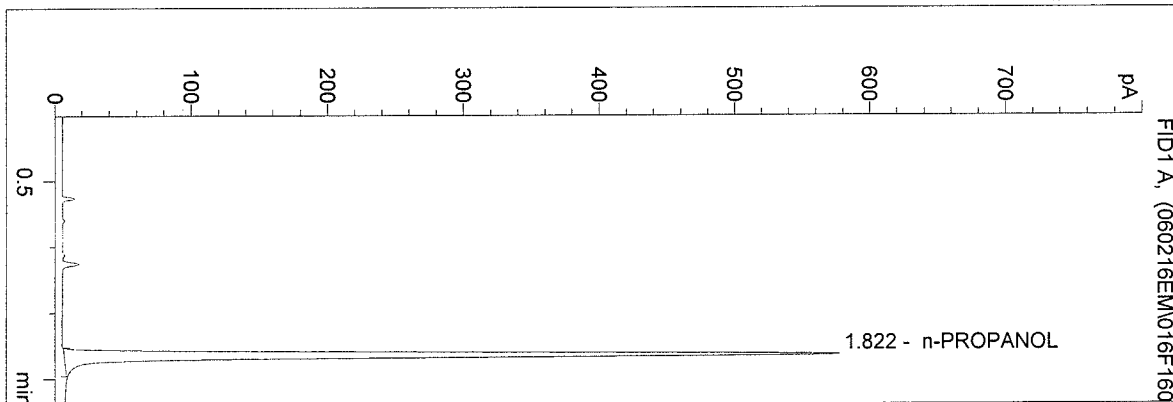
1.000 g/100ml

WASHINGTON STATE TOXICOLOGY LABORATORY

C:\HPCHEM\2\METHODS\BLDALCO3.M
 2/15/2006 1:09:08 PM
 Instrument 3
 db-alc2

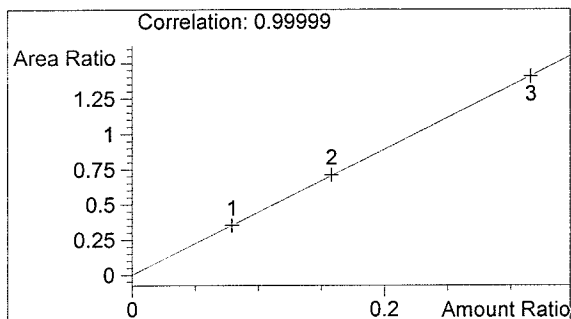
Blank
 Estuardo J. Miranda

vial # 16



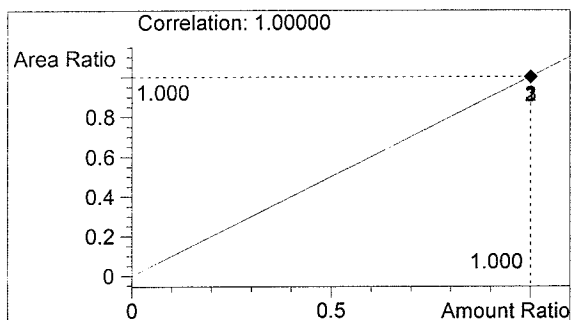
#	Compound	Area	RT
1	ETHANOL	0	0.000
2	n-PROPANOL	1574	1.822

Totals:



ETHANOL

0.000 g/100ml



n-PROPANOL

1.000 g/100ml

Sequence Parameters:

Operator: Estuardo J. Miranda
 Data File Naming: Auto
 Data Directory: C:\HPCHEM\2\DATA\
 Data Subdirectory: 060216EM
 Part of Methods to run: According to Runtime Checklist
 Barcode Reader: not used
 Shutdown Cmd/Macro: none
 Sequence Comment:

Sequence Table (Front Injector):

Method and Injection Info Part:

Line	Location	SampleName	Method	Inj	SampleType	InjVolume	DataFile
====	=====	=====	=====	===	=====	=====	=====
1	Vial 1	0.079 CAL	BLDALCO3	1	Calib		
2	Vial 2	0.158 CAL	BLDALCO3	1	Calib		
3	Vial 3	0.316 CAL	BLDALCO3	1	Calib		
4	Vial 4	Blank	BLDALCO3	1	Ctrl Samp		
5	Vial 5	0.020	BLDALCO3	1	Sample		
6	Vial 6	0.040 Control	BLDALCO3	1	Ctrl Samp		
7	Vial 7	0.100 Control	BLDALCO3	1	Ctrl Samp		
8	Vial 8	0.200 Control	BLDALCO3	1	Ctrl Samp		
9	Vial 9	Blank	BLDALCO3	1	Sample		
10	Vial 10	QA 06010-1	BLDALCO3	1	Sample		
11	Vial 11	QA 06010-2	BLDALCO3	1	Sample		
12	Vial 12	QA 06010-3	BLDALCO3	1	Sample		
13	Vial 13	QA 06010-4	BLDALCO3	1	Sample		
14	Vial 14	QA 06010-5	BLDALCO3	1	Sample		
15	Vial 15	0.100 Control	BLDALCO3	1	Sample		
16	Vial 16	Blank	BLDALCO3	1	Sample		
17	Vial 17	QA 06011-1	BLDALCO3	1	Sample		
18	Vial 18	QA 06011-2	BLDALCO3	1	Sample		
19	Vial 19	QA 06011-3	BLDALCO3	1	Sample		
20	Vial 20	QA 06011-4	BLDALCO3	1	Sample		
21	Vial 21	QA 06011-5	BLDALCO3	1	Sample		
22	Vial 22	0.100 Control	BLDALCO3	1	Ctrl Samp		
23	Vial 23	Blank	BLDALCO3	1	Sample		
24	Vial 24	QA 06012-1	BLDALCO3	1	Sample		
25	Vial 25	QA 06012-2	BLDALCO3	1	Sample		
26	Vial 26	QA 06012-3	BLDALCO3	1	Sample		
27	Vial 27	QA 06012-4	BLDALCO3	1	Sample		
28	Vial 28	QA 06012-5	BLDALCO3	1	Sample		
29	Vial 29	0.100 Control	BLDALCO3	1	Ctrl Samp		
30	Vial 30	Blank	BLDALCO3	1	Sample		
31	Vial 31	QA 06013-1	BLDALCO3	1	Sample		
32	Vial 32	QA 06013-2	BLDALCO3	1	Sample		
33	Vial 33	QA 06013-3	BLDALCO3	1	Sample		
34	Vial 34	QA 06013-4	BLDALCO3	1	Sample		
35	Vial 35	QA 06013-5	BLDALCO3	1	Sample		
36	Vial 36	0.100 Control	BLDALCO3	1	Ctrl Samp		
37	Vial 37	Blank	BLDALCO3	1	Sample		
38	Vial 38	Sim Sol 06009-1	BLDALCO3	1	Sample		
39	Vial 39	Sim Sol 06009-2	BLDALCO3	1	Sample		
40	Vial 40	Sim Sol 06009-3	BLDALCO3	1	Sample		

Line	Location	SampleName	Method	Inj	SampleType	InjVolume	DataFile
====	=====	=====	=====	===	=====	=====	=====
41	Vial 41	Sim Sol 06009-4	BLDALCO3	1	Sample		
42	Vial 42	Sim Sol 06009-5	BLDALCO3	1	Sample		
43	Vial 43	0.100 Control	BLDALCO3	1	Ctrl Samp		
44	Vial 44	Blank	BLDALCO3	1	Sample		

Sequence Table (Back Injector):

No entries - empty table!

Sequence Output Parameters:

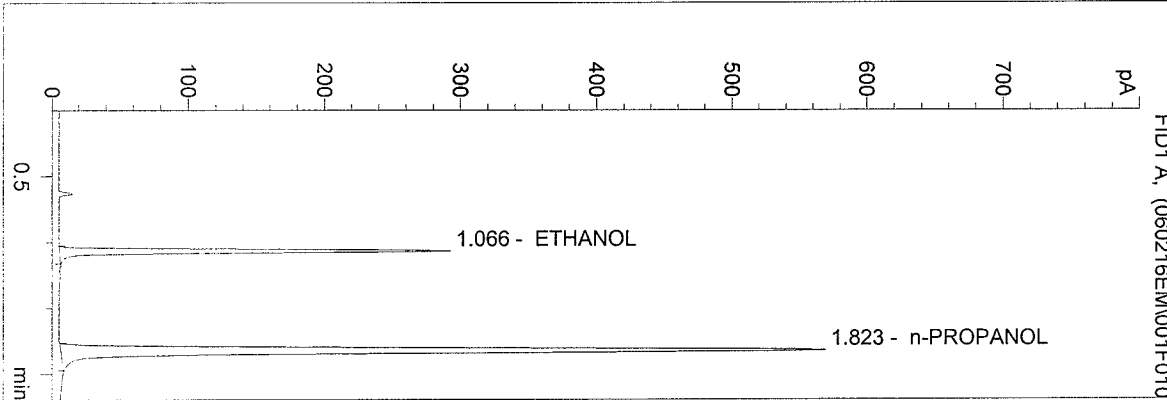
Print Sequence Summary Report (SSR): No
Dest of individual reports for each run: as specified in Method

WASHINGTON STATE TOXICOLOGY LABORATORY

C:\HPCHEM\2\METHODS\BLDALCO3.M
 2/15/2006 12:22:20 PM
 Instrument 3
 db-alc2

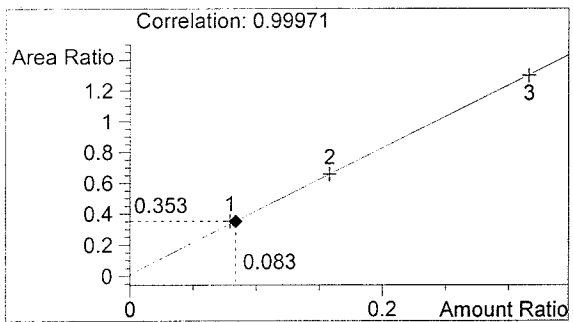
0.079 CAL
 Estuardo J. Miranda

vial # 1



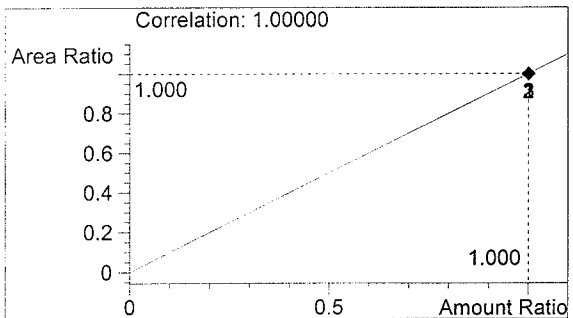
#	Compound	Area	RT
1	ETHANOL	547	1.066
2	n-PROPANOL	1547	1.823

Totals:



ETHANOL

0.083 g/100ml



n-PROPANOL

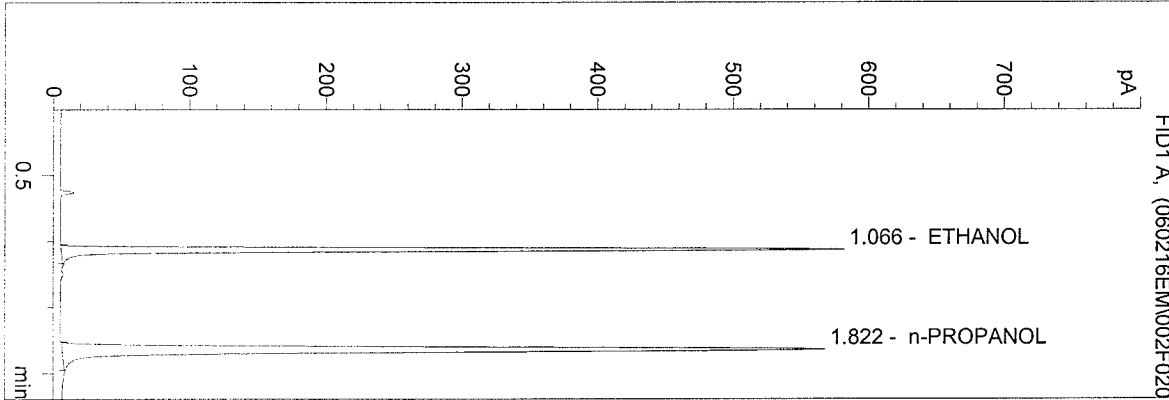
1.000 g/100ml

WASHINGTON STATE TOXICOLOGY LABORATORY

C:\HPCHEM\2\METHODS\BLDALCO3.M
 2/15/2006 12:25:27 PM
 Instrument 3
 db-alc2

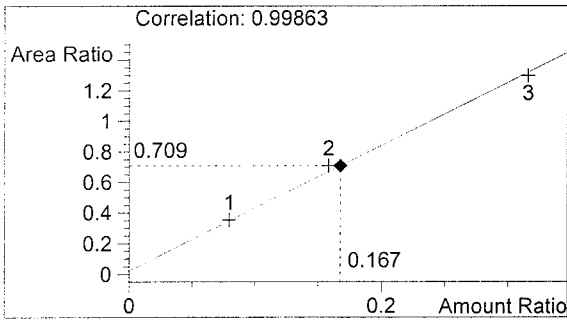
0.158 CAL
 Estuardo J. Miranda

vial # 2



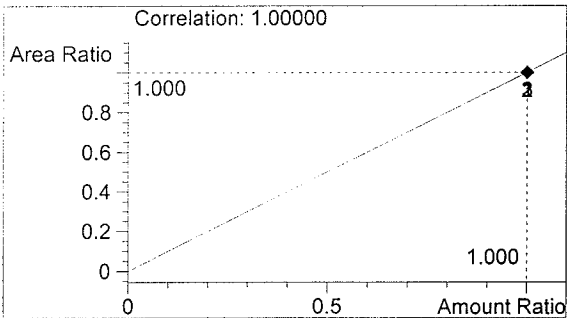
#	Compound	Area	RT
1	ETHANOL	1093	1.066
2	n-PROPANOL	1541	1.822

Totals:



ETHANOL

0.167 g/100ml



n-PROPANOL

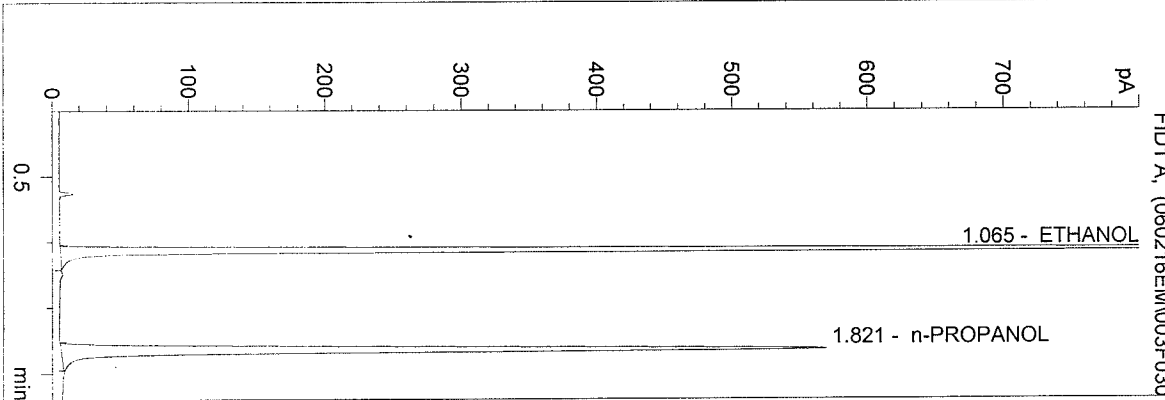
1.000 g/100ml

WASHINGTON STATE TOXICOLOGY LABORATORY

C:\HPCHEM\2\METHODS\BLDALCO3.M
 2/15/2006 12:28:34 PM
 Instrument 3
 db-alc2

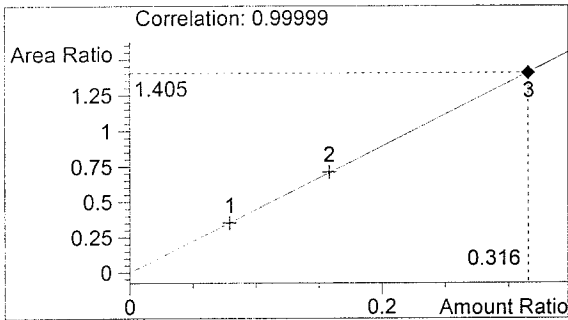
0.316 CAL
 Estuardo J. Miranda

vial # 3



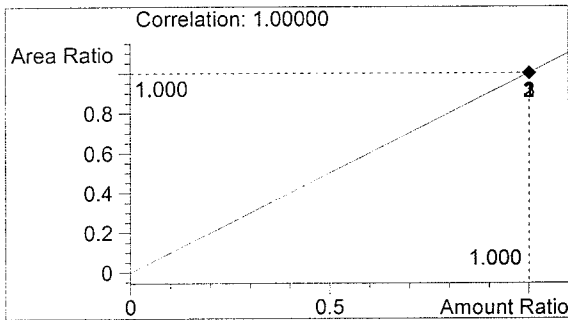
#	Compound	Area	RT
1	ETHANOL	2185	1.065
2	n-PROPANOL	1555	1.821

Totals:



ETHANOL

0.316 g/100ml



n-PROPANOL

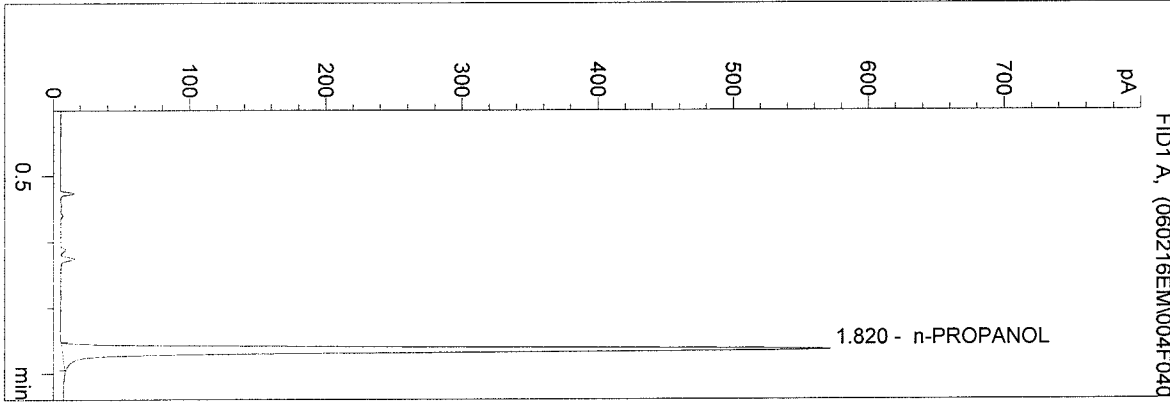
1.000 g/100ml

WASHINGTON STATE TOXICOLOGY LABORATORY

C:\HPCHEM\2\METHODS\BLDALCO3.M
 2/15/2006 12:31:42 PM
 Instrument 3
 db-alc2

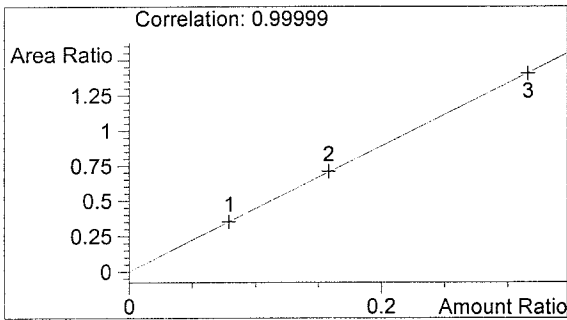
Blank
 Estuardo J. Miranda

vial # 4



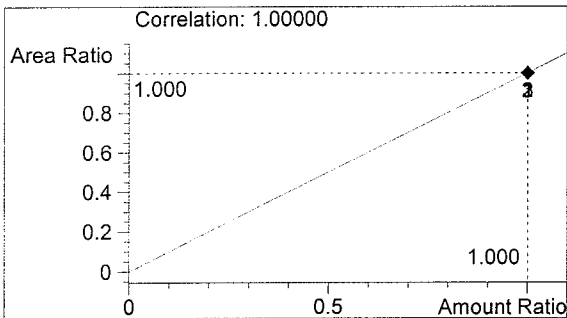
#	Compound	Area	RT
1	ETHANOL	0	0.000
2	n-PROPANOL	1560	1.820

Totals:



ETHANOL

0.000 g/100ml



n-PROPANOL

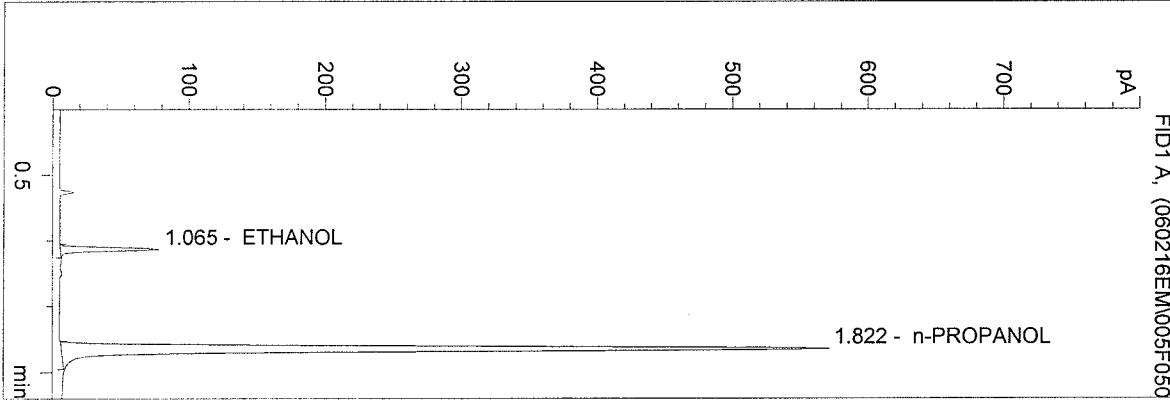
1.000 g/100ml

WASHINGTON STATE TOXICOLOGY LABORATORY

C:\HPCHEM\2\METHODS\BLDALCO3.M
 2/15/2006 12:34:49 PM
 Instrument 3
 db-alc2

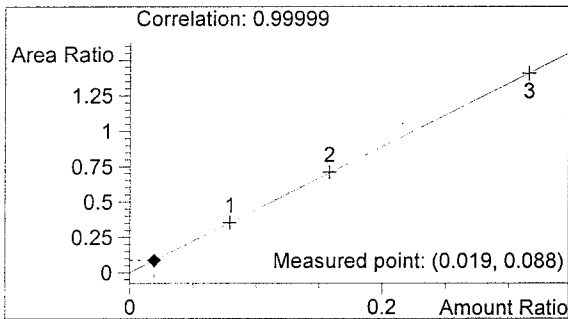
0.020
 Estuardo J. Miranda

vial # 5



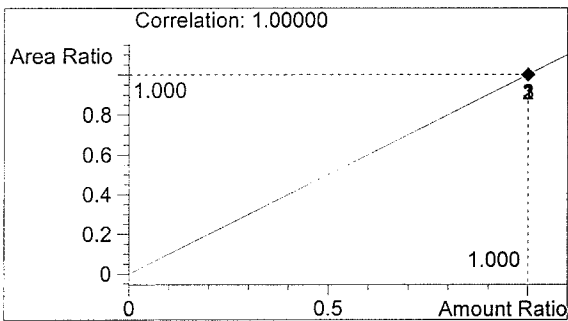
#	Compound	Area	RT
1	ETHANOL	137	1.065
2	n-PROPANOL	1557	1.822

Totals:



ETHANOL

0.019 g/100ml



n-PROPANOL

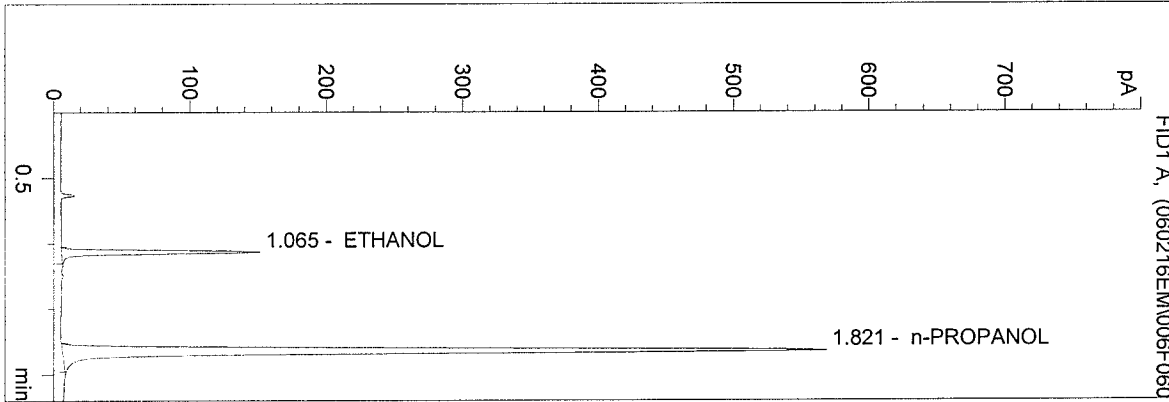
1.000 g/100ml

WASHINGTON STATE TOXICOLOGY LABORATORY

C:\HPCHEM\2\METHODS\BLDALCO3.M
 2/15/2006 12:37:56 PM
 Instrument 3
 db-alc2

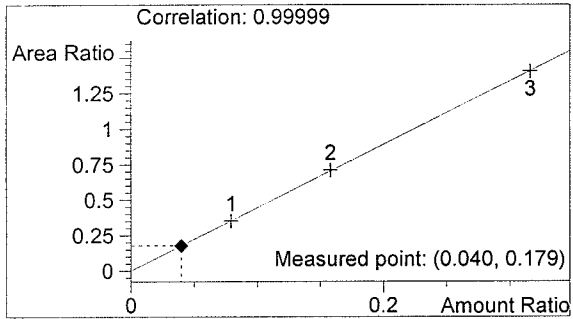
0.040 Control
 Estuardo J. Miranda

vial # 6



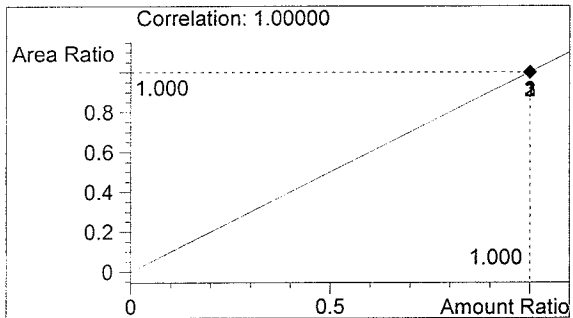
#	Compound	Area	RT
1	ETHANOL	279	1.065
2	n-PROPANOL	1553	1.821

Totals:



ETHANOL

0.040 g/100ml



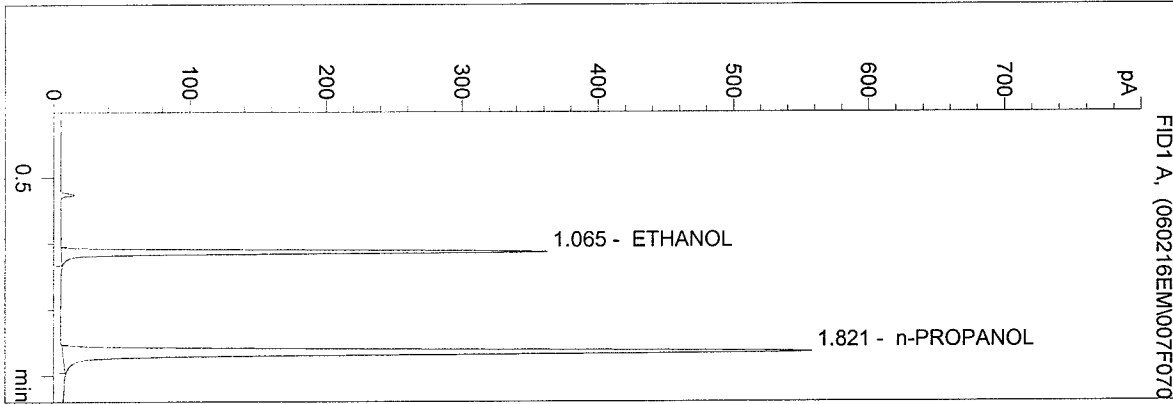
n-PROPANOL

1.000 g/100ml

WASHINGTON STATE TOXICOLOGY LABORATORY

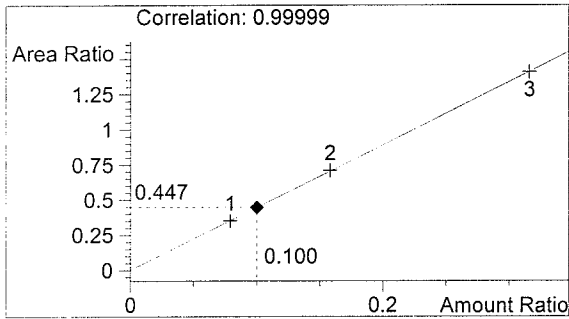
C:\HPCHEM\2\METHODS\BLDALCO3.M
 2/15/2006 12:41:03 PM
 Instrument 3
 db-alc2

0.100 Control
 Estuardo J. Miranda
 vial # 7



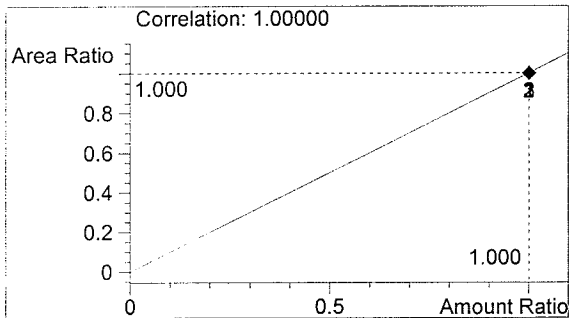
#	Compound	Area	RT
1	ETHANOL	681	1.065
2	n-PROPANOL	1522	1.821

Totals:



ETHANOL

0.100 g/100ml



n-PROPANOL

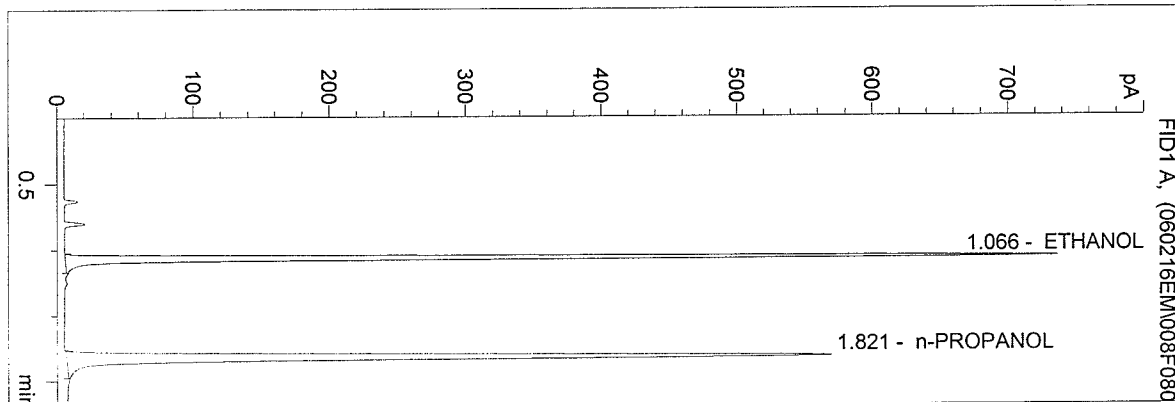
1.000 g/100ml

WASHINGTON STATE TOXICOLOGY LABORATORY

C:\HPCHEM\2\METHODS\BLDALCO3.M
 2/15/2006 12:44:10 PM
 Instrument 3
 db-alc2

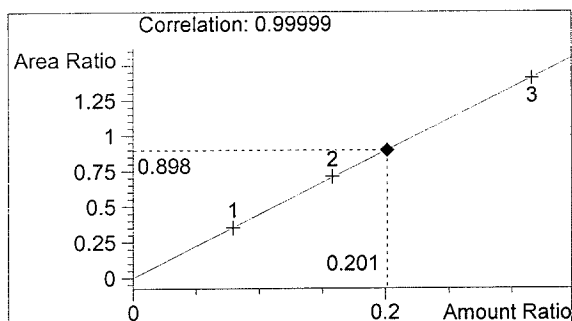
0.200 Control
 Estuardo J. Miranda

vial # 8



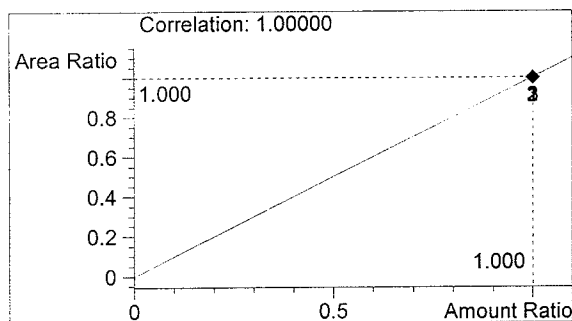
#	Compound	Area	RT
1	ETHANOL	1392	1.066
2	n-PROPANOL	1550	1.821

Totals:



ETHANOL

0.201 g/100ml



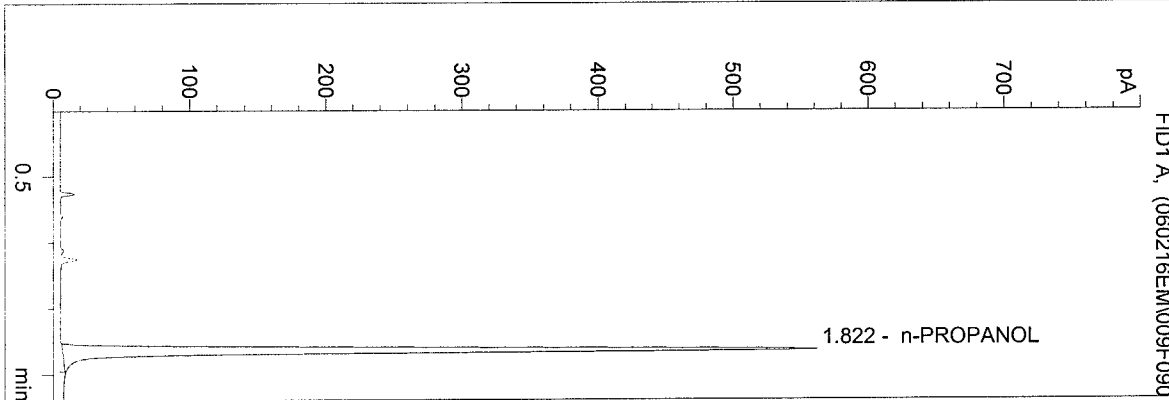
n-PROPANOL

1.000 g/100ml

C:\HPCHEM\2\METHODS\BLDALCO3.M
 2/15/2006 12:47:17 PM
 Instrument 3
 db-alc2

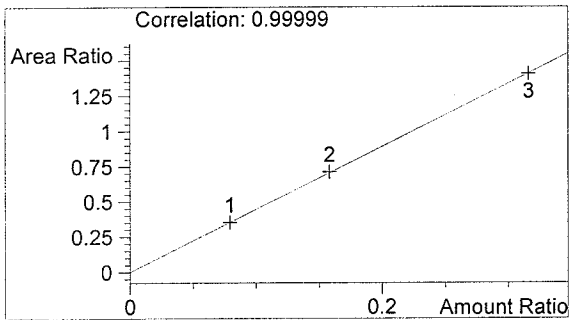
Blank
 Estuardo J. Miranda

vial # 9



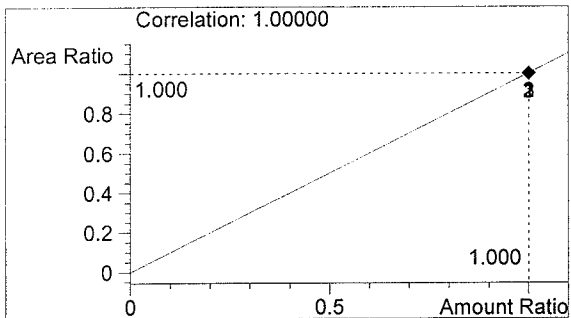
#	Compound	Area	RT
1	ETHANOL	0	0.000
2	n-PROPANOL	1532	1.822

Totals:



ETHANOL

0.000 g/100ml



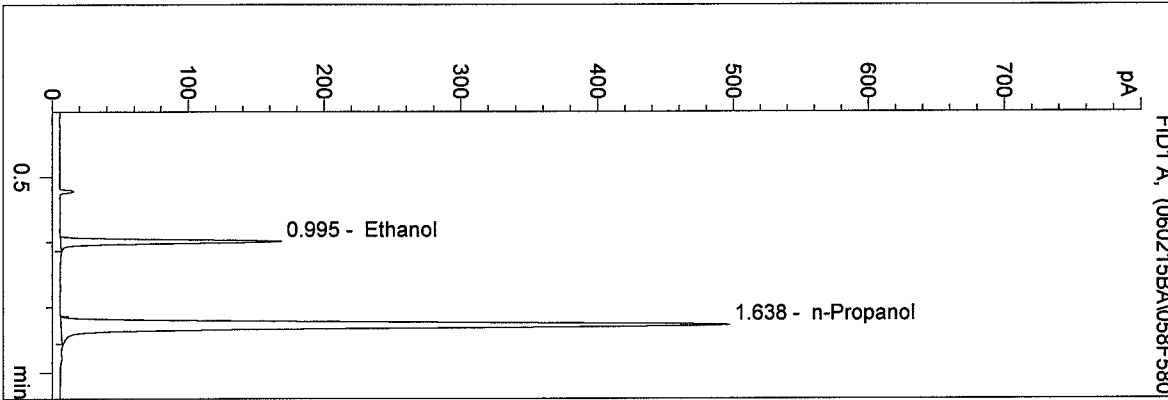
n-PROPANOL

1.000 g/100ml

D:\HPCHEM\1\METHODS\BLDALCO.M
 2/15/2006 2:53:04 PM
 Instrument 4
 DB-ALC1

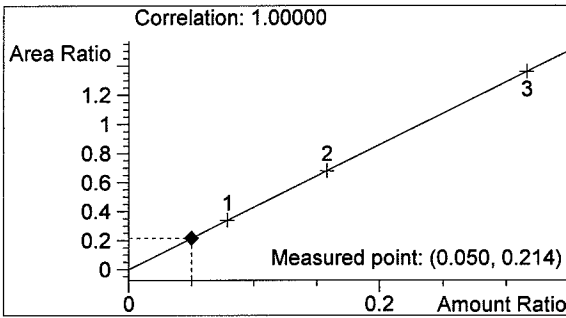
06010-A
 Brianne E. Akins

vial # 58

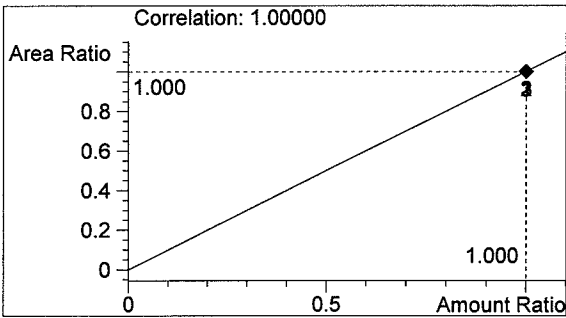


#	Compound	Area	RT
1	Ethanol	331	0.995
2	n-Propanol	1544	1.638

Totals:



Ethanol 0.050 g/100ml

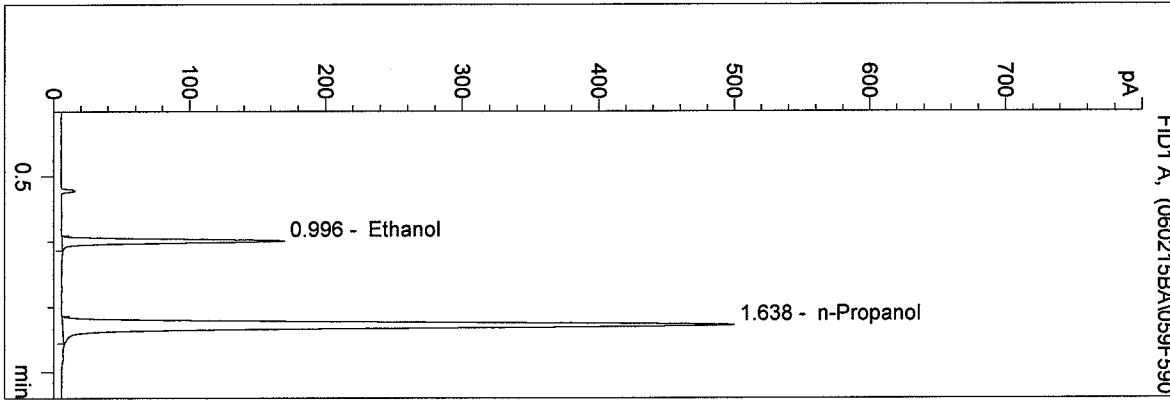


n-Propanol 1.000 g/100ml

D:\HPCHEM\1\METHODS\BLDALCO.M
 2/15/2006 2:56:22 PM
 Instrument 4
 DB-ALC1

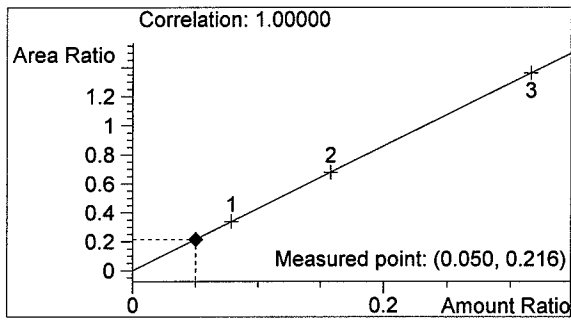
06010-B
 Brianne E. Akins

vial # 59

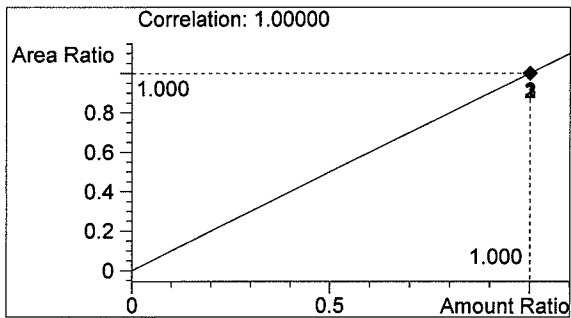


#	Compound	Area	RT
1	Ethanol	336	0.996
2	n-Propanol	1556	1.638

Totals:



Ethanol 0.050 g/100ml

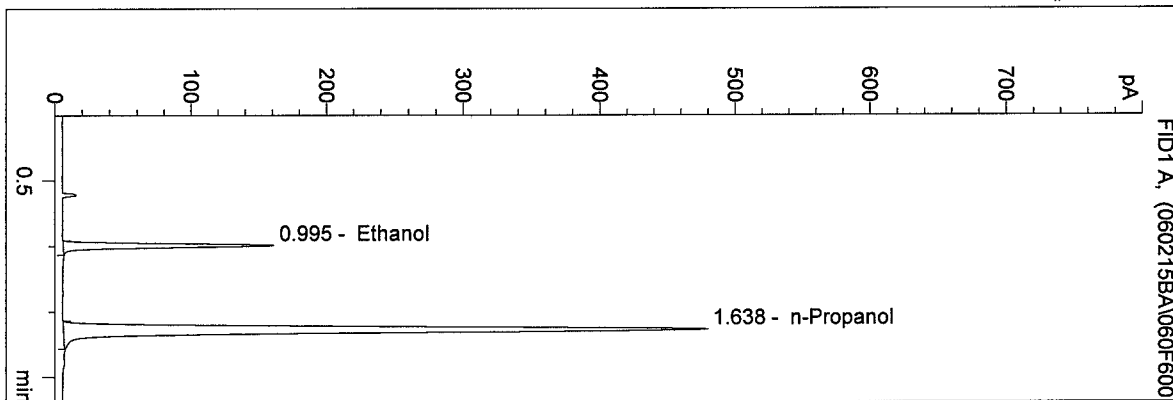


n-Propanol 1.000 g/100ml

D:\HPCHEM\1\METHODS\BLDALCO.M
 2/15/2006 2:59:39 PM
 Instrument 4
 DB-ALC1

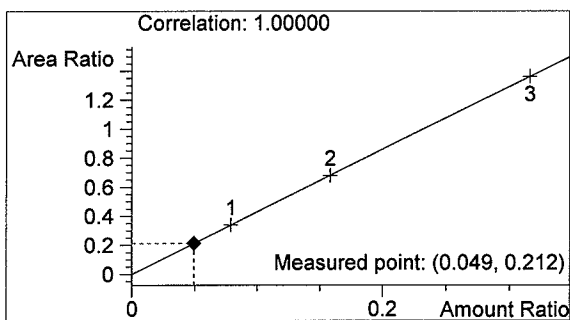
06010-C
 Brianne E. Akins

vial # 60

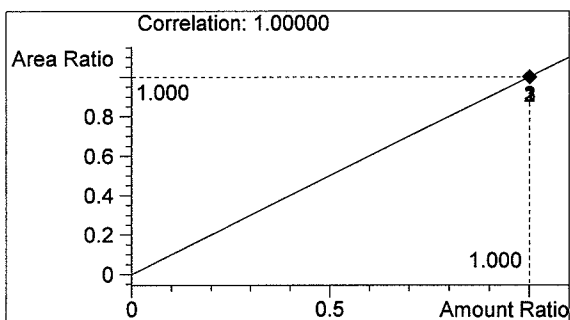


#	Compound	Area	RT
1	Ethanol	316	0.995
2	n-Propanol	1491	1.638

Totals:



Ethanol 0.049 g/100ml

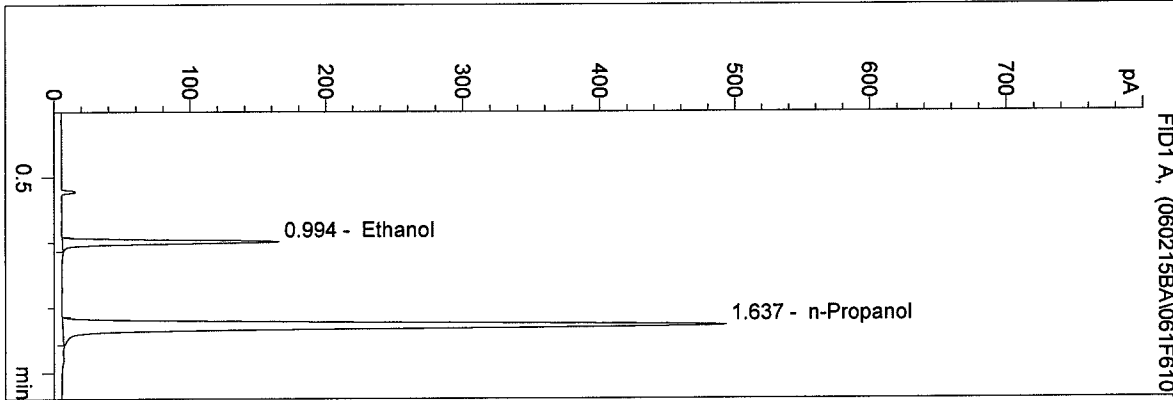


n-Propanol 1.000 g/100ml

D:\HPCHEM\1\METHODS\BLDALCO.M
 2/15/2006 3:02:55 PM
 Instrument 4
 DB-ALC1

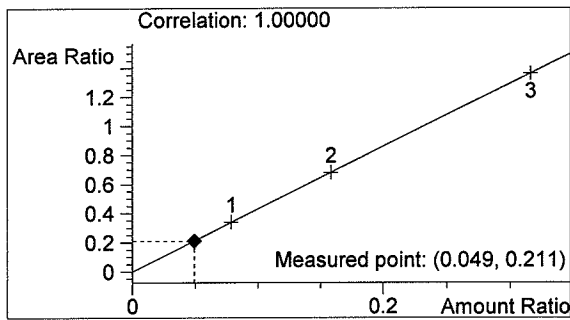
06010-D
 Brianne E. Akins

vial # 61

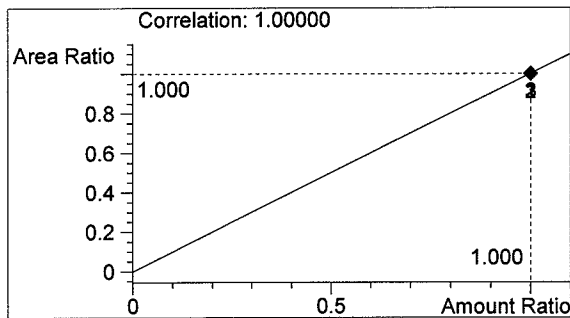


#	Compound	Area	RT
1	Ethanol	324	0.994
2	n-Propanol	1536	1.637

Totals:



Ethanol 0.049 g/100ml

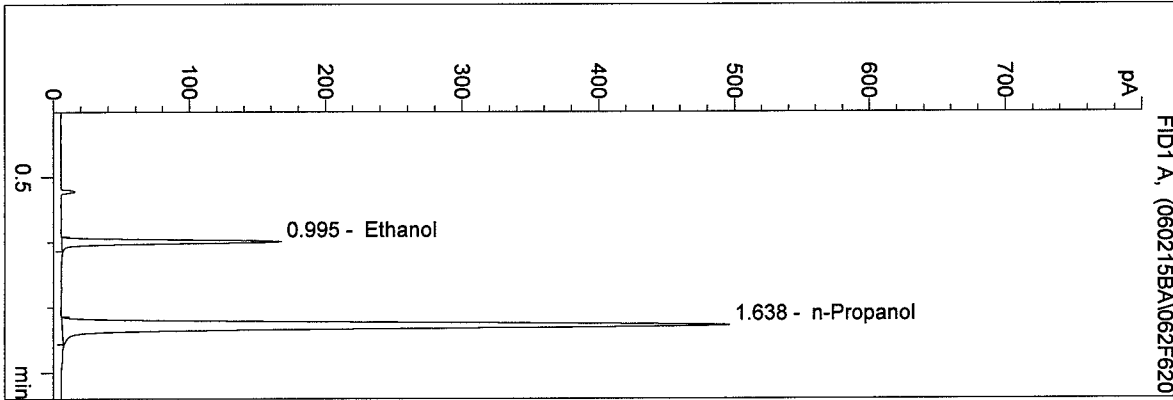


n-Propanol 1.000 g/100ml

D:\HPCHEM\1\METHODS\BLDALCO.M
 2/15/2006 3:06:09 PM
 Instrument 4
 DB-ALC1

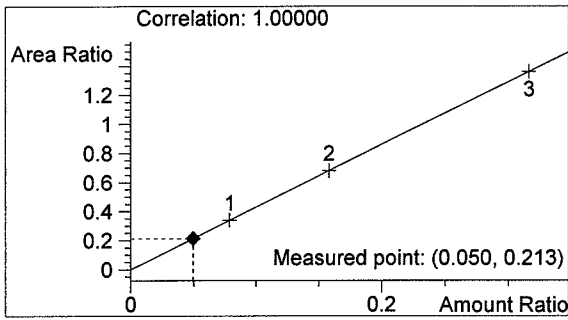
06010-E
 Brianne E. Akins

vial # 62

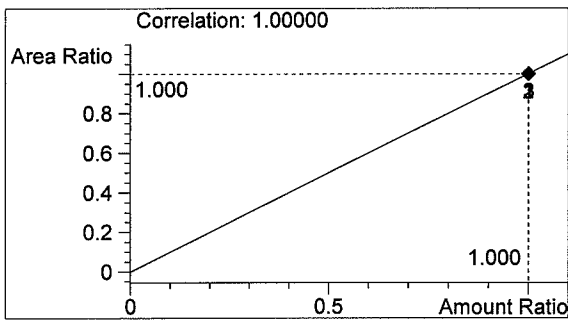


#	Compound	Area	RT
1	Ethanol	329	0.995
2	n-Propanol	1542	1.638

Totals:



Ethanol 0.050 g/100ml

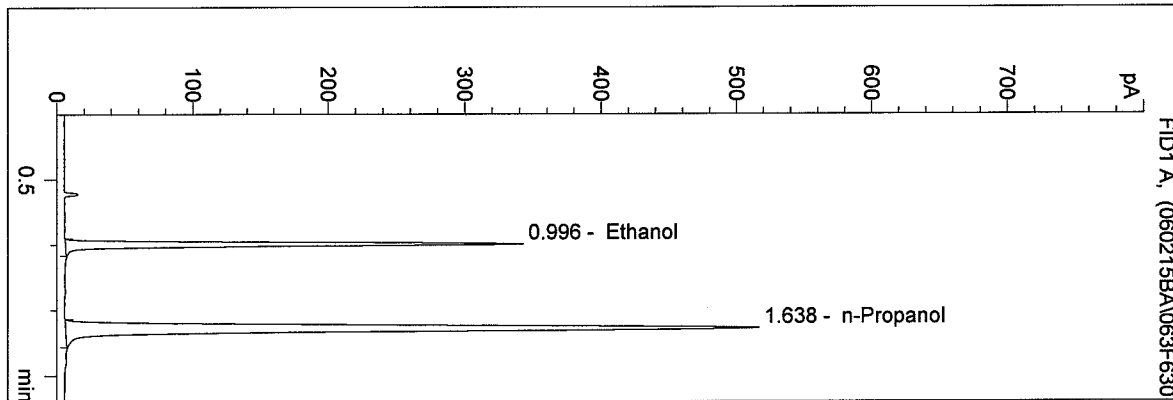


n-Propanol 1.000 g/100ml

D:\HPCHEM\1\METHODS\BLDALCO.M
 2/15/2006 3:09:22 PM
 Instrument 4
 DB-ALC1

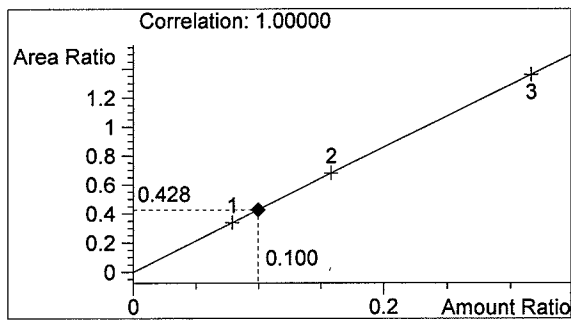
0.10 CONTROL-BA
 Brianne E. Akins

vial # 63

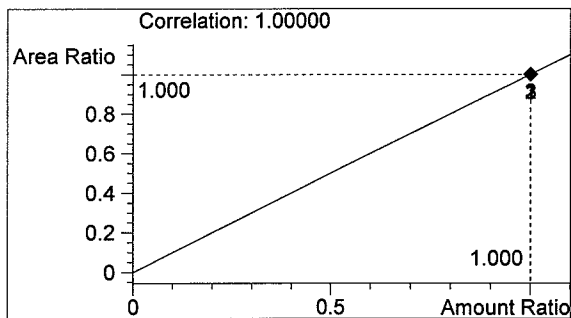


#	Compound	Area	RT
1	Ethanol	687	0.996
2	n-Propanol	1607	1.638

Totals:



Ethanol 0.100 g/100ml

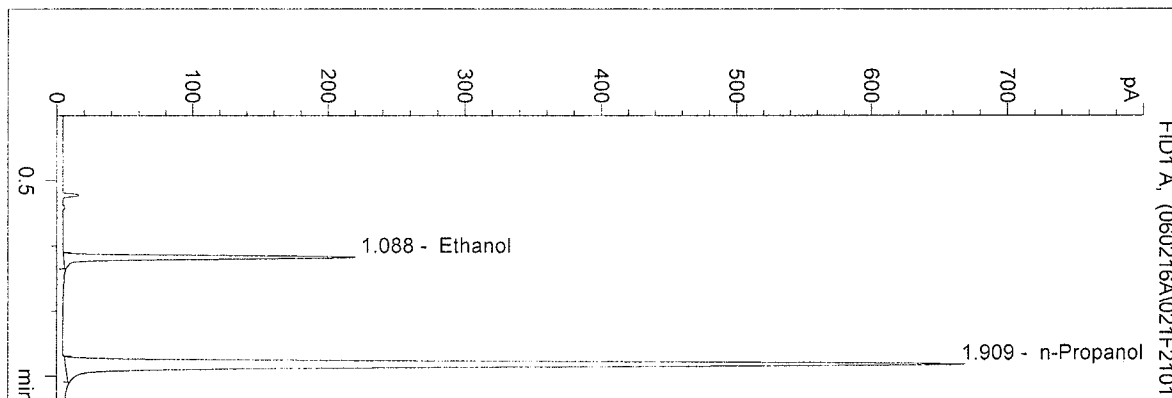


n-Propanol 1.000 g/100ml

D:\HPCHEM\1\METHODS\BLDALCO2.M
 2/16/2006 12:06:58 PM
 Instrument 5
 DB-ALC2

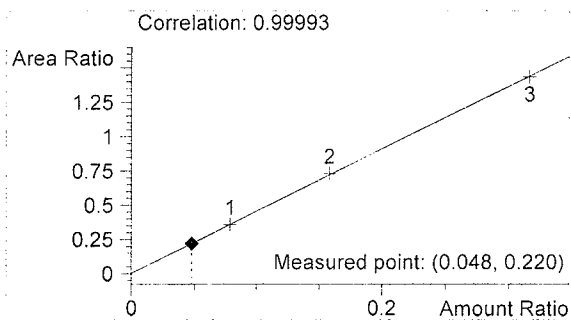
06010
 BCAPRON

vial # 21

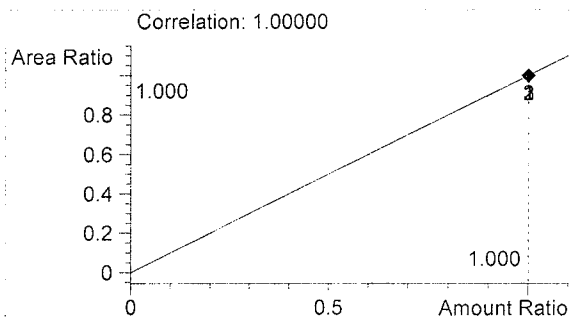


#	Compound	Area	RT
1	Ethanol	426	1.088
2	n-Propanol	1937	1.909

Totals:



Ethanol 0.048 g/100ml

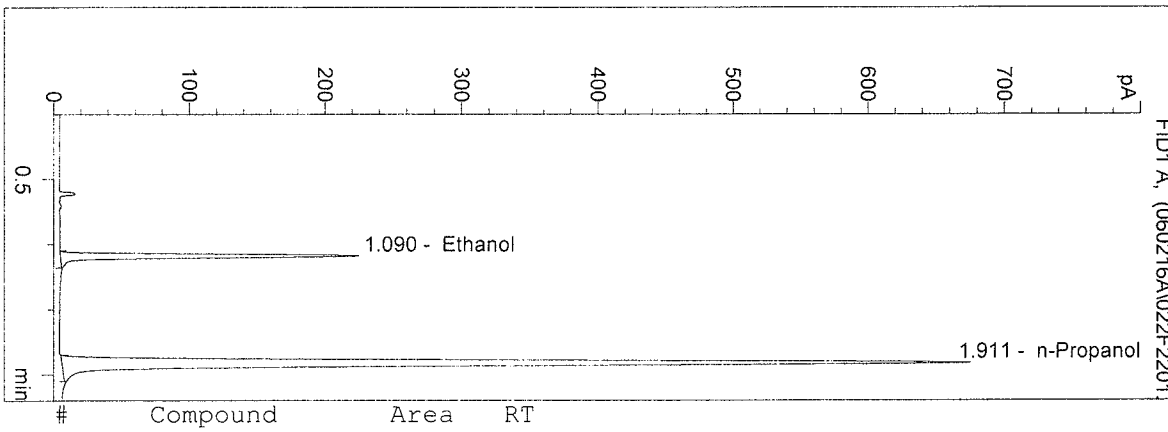


n-Propanol 1.000 g/100ml

D:\HPCHEM\1\METHODS\BLDALCO2.M
 2/16/2006 12:10:10 PM
 Instrument 5
 DB-ALC2

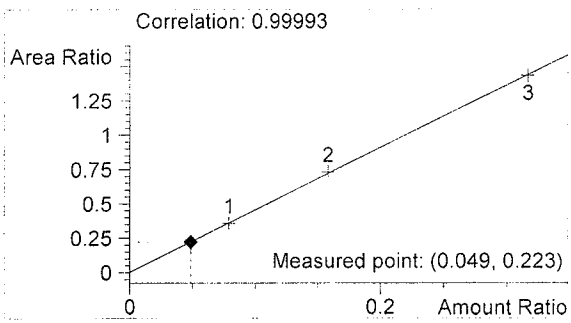
06010
 BCAPRON

vial # 22

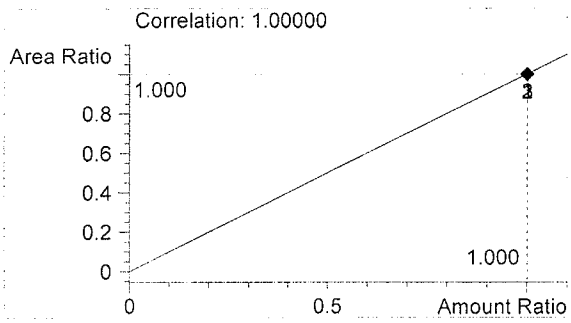


#	Compound	Area	RT
1	Ethanol	438	1.090
2	n-Propanol	1960	1.911

Totals:



Ethanol 0.049 g/100ml

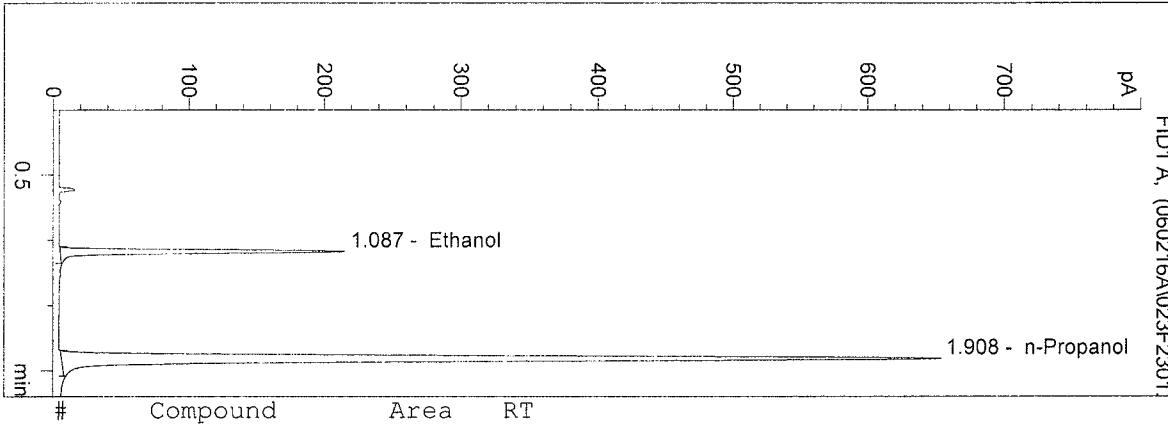


n-Propanol 1.000 g/100ml

D:\HPCHEM\1\METHODS\BLDALCO2.M
 2/16/2006 12:13:20 PM
 Instrument 5
 DB-ALC2

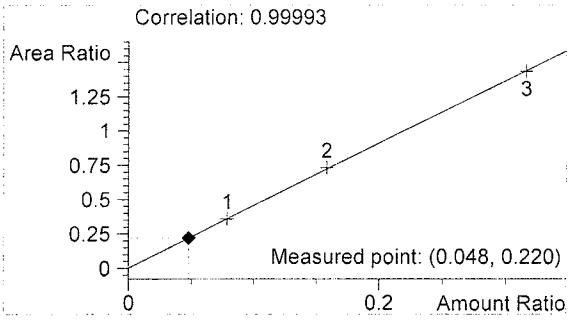
06010
 BCAPRON

vial # 23

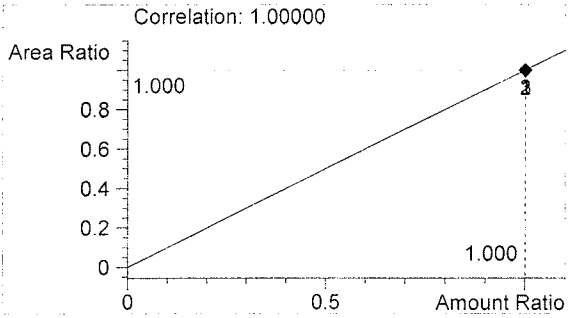


#	Compound	Area	RT
1	Ethanol	416	1.087
2	n-Propanol	1894	1.908

Totals:



Ethanol 0.048 g/100ml

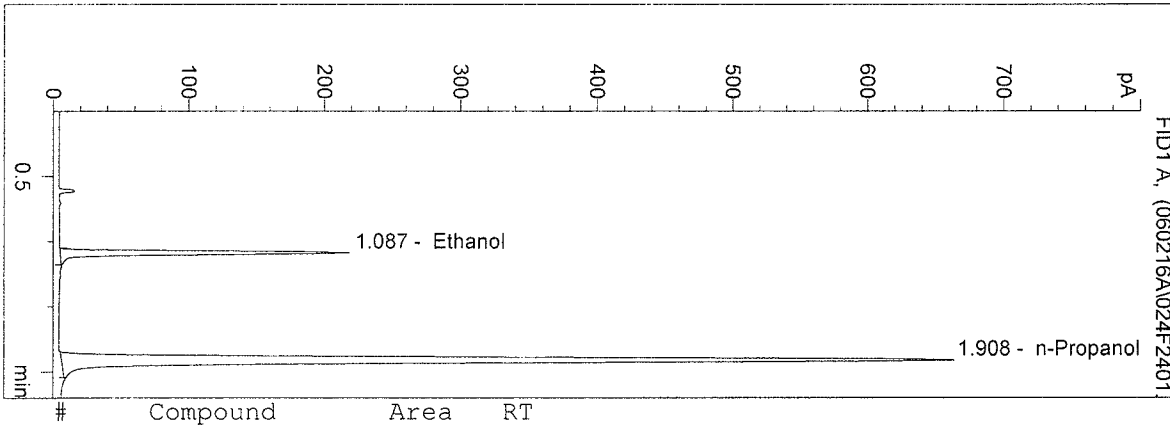


n-Propanol 1.000 g/100ml

D:\HPCHEM\1\METHODS\BLDALCO2.M
 2/16/2006 12:16:37 PM
 Instrument 5
 DB-ALC2

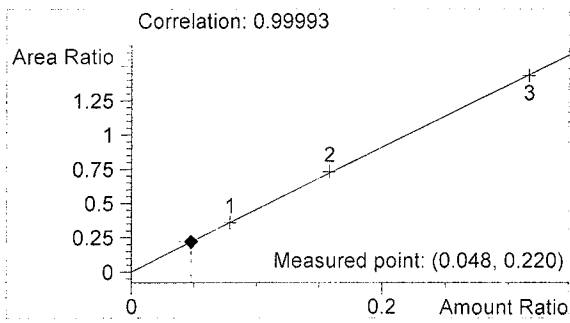
06010
 BCAPRON

vial # 24

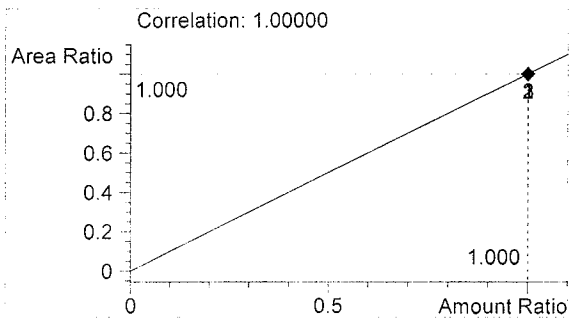


#	Compound	Area	RT
1	Ethanol	423	1.087
2	n-Propanol	1923	1.908

Totals:



Ethanol 0.048 g/100ml

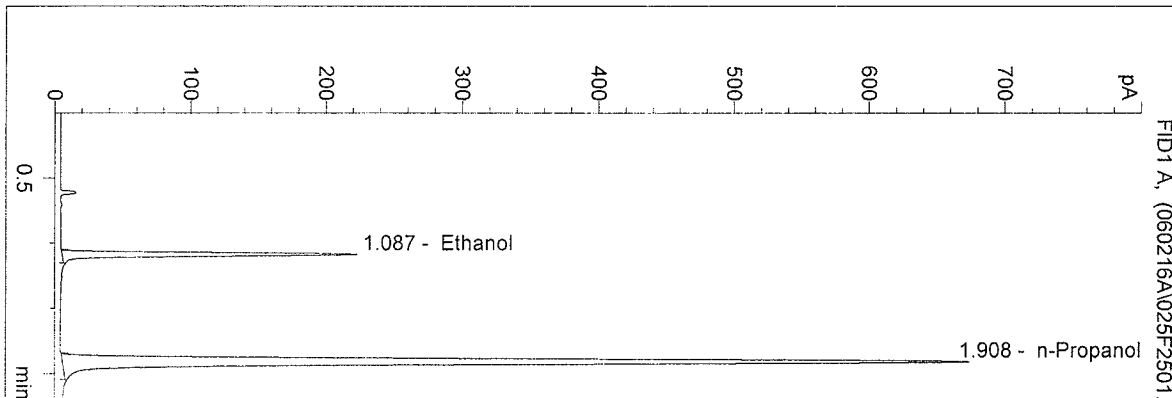


n-Propanol 1.000 g/100ml

D:\HPCHEM\1\METHODS\BLDALCO2.M
 2/16/2006 12:19:54 PM
 Instrument 5
 DB-ALC2

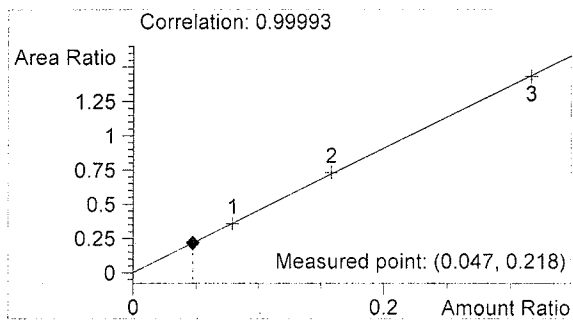
06010
 BCAPRON

vial # 25

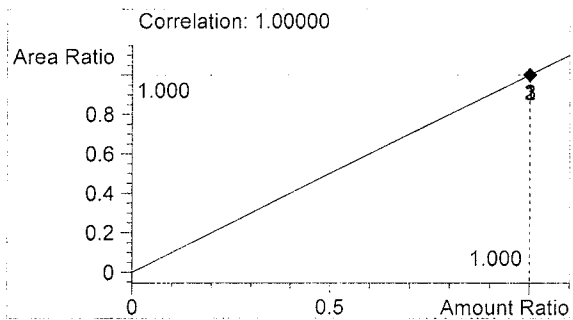


#	Compound	Area	RT
1	Ethanol	425	1.087
2	n-Propanol	1952	1.908

Totals:



Ethanol 0.047 g/100ml

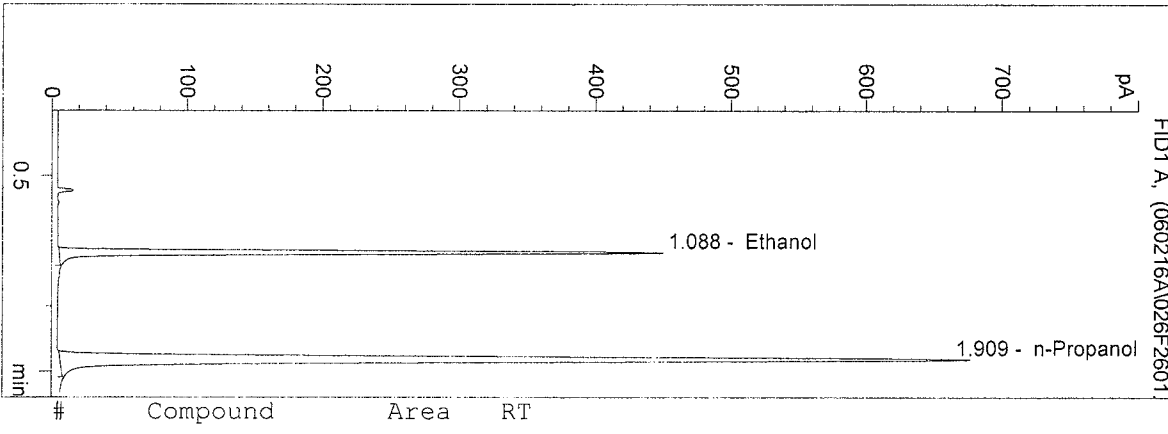


n-Propanol 1.000 g/100ml

D:\HPCHEM\1\METHODS\BLDALCO2.M
 2/16/2006 12:23:11 PM
 Instrument 5
 DB-ALC2

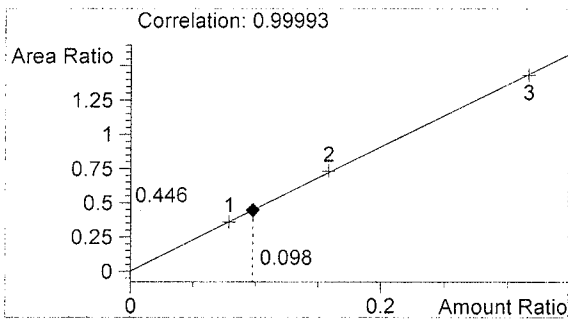
0.10 CONTROL BC
 BCAPRON

vial # 26

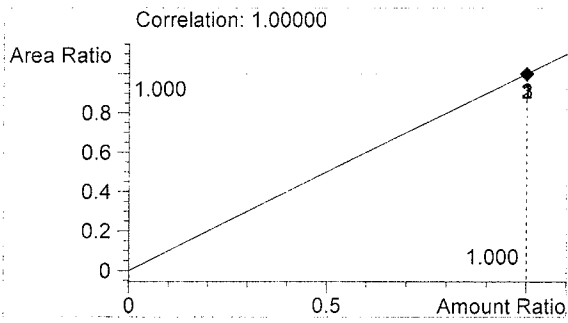


#	Compound	Area	RT
1	Ethanol	875	1.088
2	n-Propanol	1961	1.909

Totals:



Ethanol 0.098 g/100ml

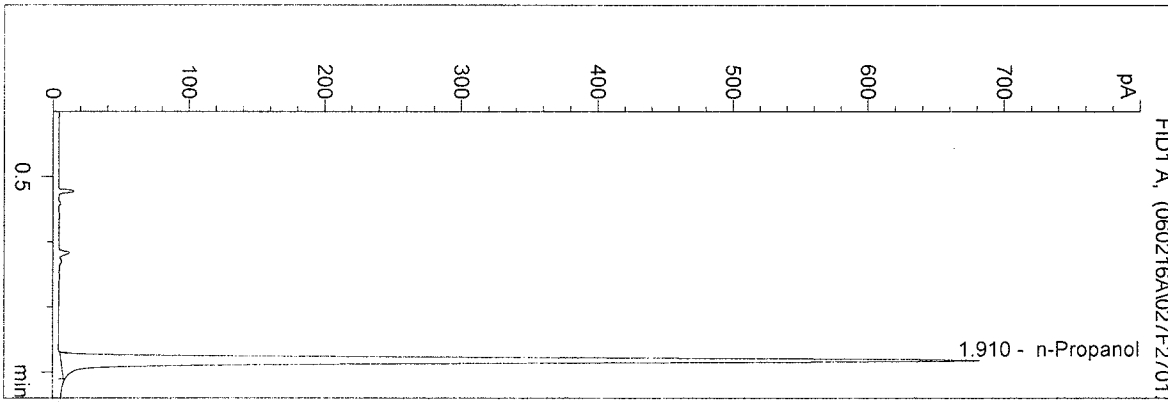


n-Propanol 1.000 g/100ml

D:\HPCHEM\1\METHODS\BLDALCO2.M
 2/16/2006 12:26:26 PM
 Instrument 5
 DB-ALC2

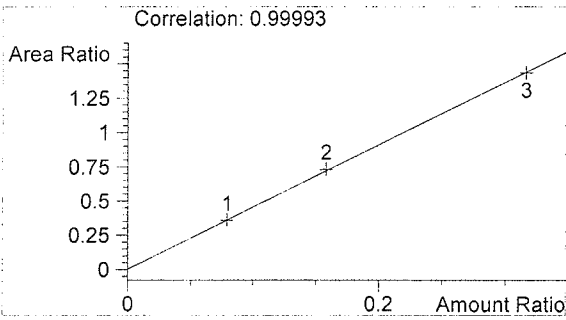
BLANK
 BCAPRON

vial # 27

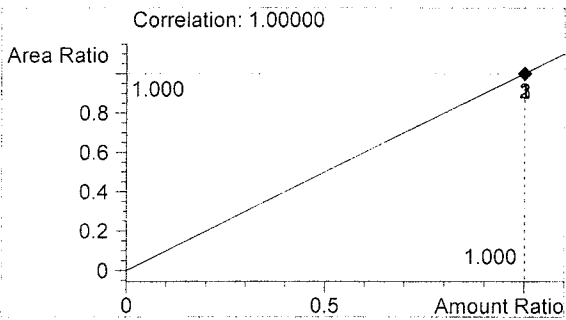


#	Compound	Area	RT
1	Ethanol	0	0.000
2	n-Propanol	1980	1.910

Totals:



Ethanol 0.000 g/100ml



n-Propanol 1.000 g/100ml