

Notice of Simulator Solution File Review

At the request of the State Toxicologist a review of the following simulator solution records has been accomplished. The following file consists of simulator solution analyses performed and completed by the State Toxicology Laboratory for a specific batch number. The file contains the simulator solution data entry form along with a file review record and the chromatograms generated by the Toxicology Laboratory during the analyses of the solutions. This file has been reviewed by Tpr. Ken Denton and Mr. Rod Gullberg for accuracy and completeness. Where computations regarding simulator solution values have been found to be incorrect, the corrected values have been written in by Mr. Rod Gullberg along with initials and date. The corrected values were then evaluated to ensure that the solution still conformed to those standards established by the State Toxicologist.

Where computation values changed for a specific batch number, the analysts employed by the State Toxicology Laboratory were asked to review the revisions, ensure the solution complied with the criteria established by the State Toxicologist and then re-sign their affidavit. Their signature will appear on their original affidavit along with a statement regarding their review of the results.

Where a dating error occurred that analyst will have made the correction on the original data form including their initials and date and then re-signed their original affidavit.

KL.D

Tpr. Ken Denton

10/15/2007

Date

RG

Rod G. Gullberg

10-15-07

Date

Washington State Toxicology Laboratory

Simulator Solution Data Entry Review Form

Reviewer KEN DENTON / ROD GULLBERG Date 10-8-07
Location TOX LABS SEATTLE Batch Number 05027

Form Review Criteria

Preparation date precedes all analysis dates: Okay Not Okay

Data entry corresponds to all chromatograms: Okay Not Okay

All signatures present: Okay Not Okay

Computations:

Avg. solution concentration: Correct Not Correct

Standard deviation: Correct Not Correct

Range: Correct Not Correct

Precision: Correct Not Correct


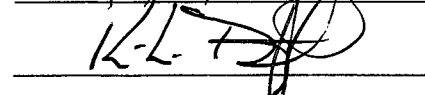
Equivalent vapor concent.: Correct Not Correct

External Control Information
(lot # and future date): Correct Not Correct

Complies with accuracy and precision requirements established by the
State Toxicologist: Yes No

Corrections Necessary:

Comments:

Reviewer Signature:  Date: 10-8-07
Reviewer Signature:  Date: 10/8/2007

WASHINGTON STATE TOXICOLOGY LABORATORY
 FORENSIC LABORATORY SERVICES BUREAU
 WASHINGTON STATE PATROL
 2203 AIRPORT WAY S, SUITE 360
 SEATTLE, WASHINGTON 98134-2027
 (206) 262-6100 FAX (206) 262-6145

Preparation and certification of **0.15 g/210L Quality Assurance solution**

Batch number **05027**

Date: 7/6/2005

Preparation: 42.3 mL of absolute ethyl alcohol diluted to 18 Liters with water

Concentration of ethanol (g/100mL) measured by gas chromatography:

	Anal 1	Anal 2	Anal 3	Anal 4	Anal 5	Anal 6	Anal 7	Anal 8	Anal 9	Anal 10	Anal 11	Anal 12
1		0.187	0.187	0.187								
2		0.187	0.187	0.190								
3		0.187	0.187	0.187								
4		0.187	0.187	0.189								
5		0.187	0.187	0.188								
Ctrl		0.098	0.099	0.099								

TAL

External Control:

Lot #: A028603 Exp date: 12/07

Target concentration: 0.10 g/100mL

Statistics:

10-11-07

Avg. solution concent.: 0.1874 g/100 mL

0.1847 SD: ~~0.00083~~ *0.00091*

Range (3xSD): ~~0.1849~~ to ~~0.1899~~

Precision CV (%): ~~0.4405~~ % *0.1901*

Equivalent vapor concent.: 0.1524 g/210L

0.4857

Date

Analyst	Name	Signature	Date
1	Naziha Nuwayhid, PhD		
2	Mary E Wilson	<i>Mary E Wilson</i>	07/06/2005
3	Kari Gruendell	<i>Kari Gruendell</i>	07/07/2005
4	Estuardo J. Miranda	<i>Estuardo J. Miranda</i>	07/08/2005
5			
6			
7			
8			
9			
10			
11			
12			

Prepared by: Naziha Nuwayhid, PhD according to the approved protocol

July 7, 2005

TO: MEMO TO FILE

FROM: Ann Marie Gordon 
Laboratory Manager
Washington State Toxicology Laboratory

RE: QA Solution 05027

Quality Assurance solution 05027 was prepared by Naziha Nuwayhid, PhD, on July 6, 2005. Dr. Nuwayhid was unavailable to test the batch herself; however, the batch was appropriately certified according to SOP by Kari Gruendell, Estuardo Miranda and Mary Wilson. All criteria was fully acceptable.



STATE OF WASHINGTON
WASHINGTON STATE PATROL

WASHINGTON STATE TOXICOLOGY LABORATORY

2203 Airport Way South, Suite 360•Seattle, Washington 98134-2927•(206) 262-6100•FAX (206) 262-6145

DATAMASTER QUALITY ASSURANCE SOLUTION
CERTIFICATION

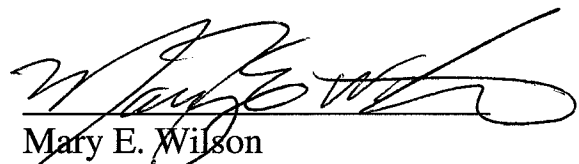
I, Mary E. Wilson, do certify under penalty of perjury as follows:

I am employed by the Washington State Toxicology Laboratory, and a part of my responsibilities includes preparing and testing the alcohol solutions for the DataMaster breath test instrument.

I possess the following qualifications: BS degree in Biology and a minor in Chemistry with three years of experience in toxicology, including two years in the Washington State Toxicology Laboratory.

The quality assurance solution, Lot Number 05027, was prepared in the Washington State Toxicology Laboratory. I examined and tested this solution. The mean concentration of the alcohol was 0.1874 grams per 100ml.

Dated: 7/11/05
Seattle, WA


Mary E. Wilson
Forensic Toxicologist

MEW/la
MEWQA





STATE OF WASHINGTON
WASHINGTON STATE PATROL
WASHINGTON STATE TOXICOLOGY LABORATORY
2203 Airport Way South, Suite 360•Seattle, Washington 98134-2927•(206) 262-6100•FAX (206) 262-6145

DATAMASTER QUALITY ASSURANCE SOLUTION
CERTIFICATION


I, Kari D. Gruendell, do certify under penalty of perjury as follows:

I am employed by the Washington State Toxicology Laboratory, and a part of my responsibilities includes preparing and testing the alcohol solutions for the DataMaster breath test instrument.

I possess the following qualifications: BS degree in Biology and a minor in Chemistry and two years of analytical laboratory experience.

The quality assurance solution, Lot Number 05027, was prepared in the Washington State Toxicology Laboratory. I examined and tested this solution. The mean concentration of the alcohol was 0.1874 grams per 100ml.

Dated: 7/11/05
Seattle, WA


Kari D. Gruendell
Forensic Toxicologist

KDG/la
KDGQA





STATE OF WASHINGTON
WASHINGTON STATE PATROL

WASHINGTON STATE TOXICOLOGY LABORATORY

2203 Airport Way South, Suite 360•Seattle, Washington 98134-2927•(206) 262-6100•FAX (206) 262-6145

DATAMASTER QUALITY ASSURANCE SOLUTION
CERTIFICATION

I, Estuardo J. Miranda, do certify under penalty of perjury as follows:

I am employed by the Washington State Toxicology Laboratory, and a part of my responsibilities includes preparing and testing the alcohol solutions for the DataMaster breath test instrument.

I possess the following qualifications: Bachelor of Science in Chemistry, Master of Science in Zoology, seven years experience in biochemical research and seven years experience in Forensic Toxicology.

The quality assurance solution, Lot Number 05027 was prepared in the Washington State Toxicology Laboratory. I examined and tested this solution. The mean concentration of the alcohol was 0.1874 grams per 100ml.

Dated: 7/11/05
Seattle, WA

Estuardo J. Miranda
Forensic Toxicologist

EM/la
EMQA

A review of solution batch records was recently completed. After this review, I checked the file for this solution and reviewed all changes that were made. I found that the solution still conformed to those standards established by the State Toxicologist for the certification of simulator solutions.

July 7, 2005

TO: MEMO TO FILE

FROM: Ann Marie Gordon 
Laboratory Manager
Washington State Toxicology Laboratory

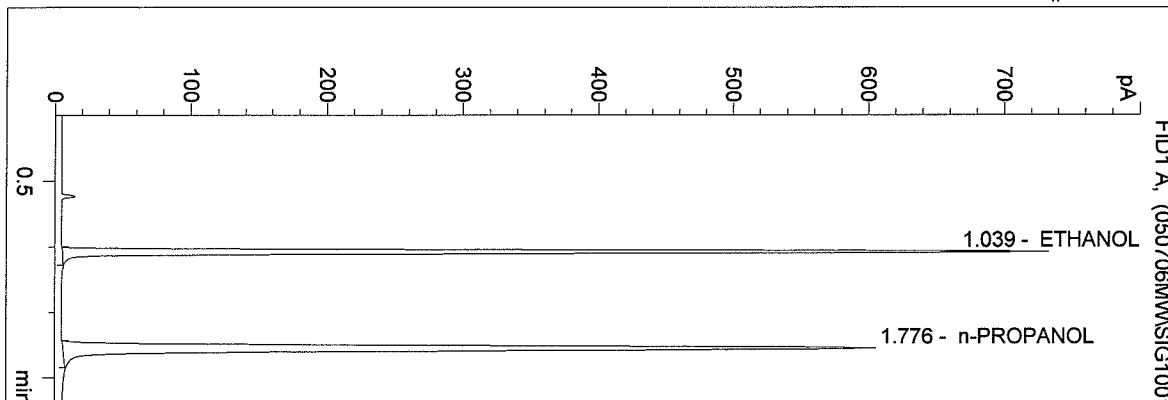
RE: QA Solution 05027

Quality Assurance solution 05027 was prepared by Naziha Nuwayhid, PhD, on July 6, 2005. Dr. Nuwayhid was unavailable to test the batch herself; however, the batch was appropriately certified according to SOP by Kari Gruendell, Estuardo Miranda and Mary Wilson. All criteria was fully acceptable.

C:\HPCHEM\2\METHODS\BLDALCO3.M
 7/6/2005 1:33:55 PM
 Instrument 3
 db-alc2

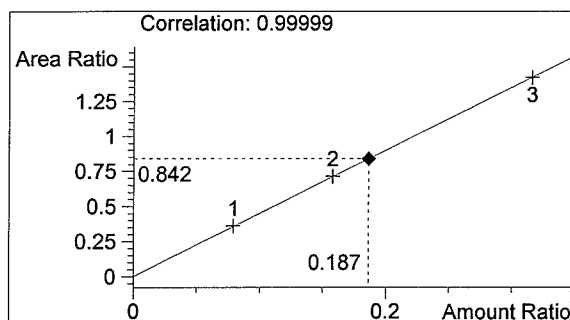
05027 QA
 mary wilson

vial # 17

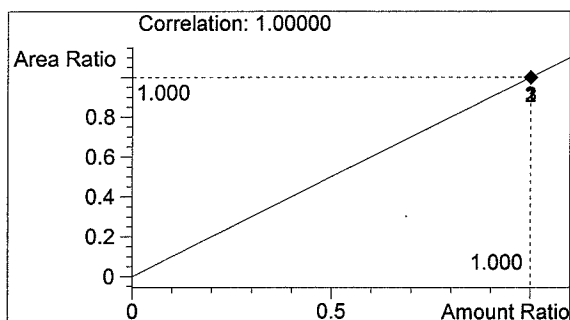


#	Compound	Area	RT
1	ETHANOL	1356	1.039
2	n-PROPANOL	1611	1.776

Totals:



ETHANOL 0.187 g/100ml

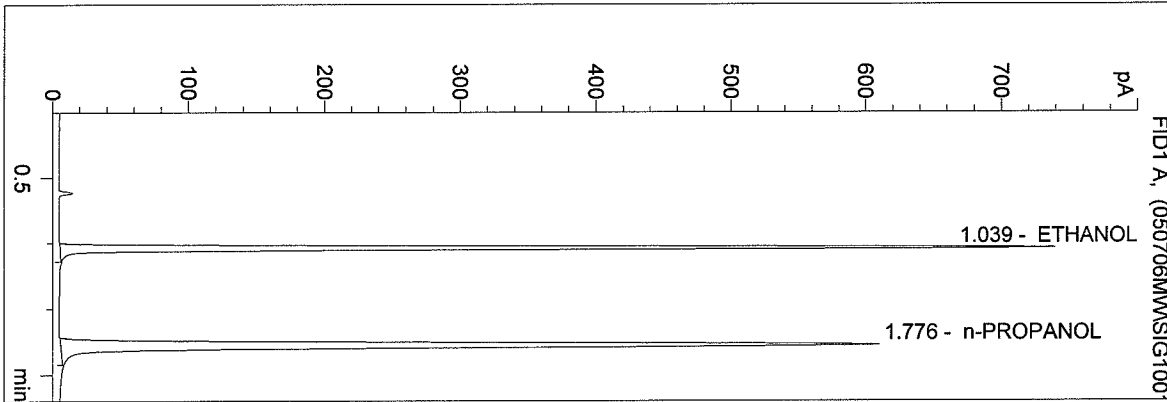


n-PROPANOL 1.000 g/100ml

C:\HPCHEM\2\METHODS\BLDALCO3.M
 7/6/2005 1:36:32 PM
 Instrument 3
 db-alc2

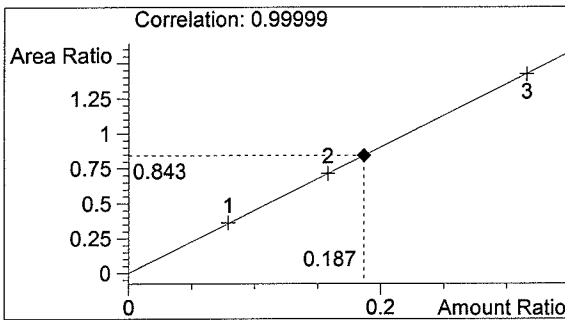
05027 QA
 mary wilson

vial # 18

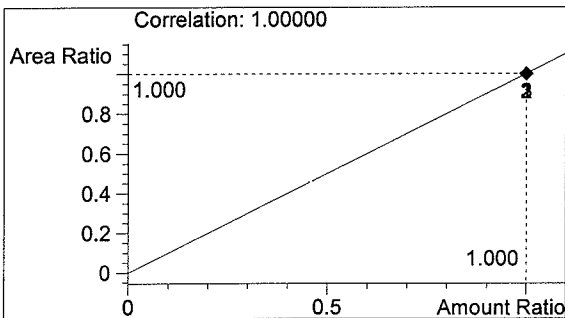


#	Compound	Area	RT
1	ETHANOL	1365	1.039
2	n-PROPANOL	1620	1.776

Totals:



ETHANOL 0.187 g/100ml



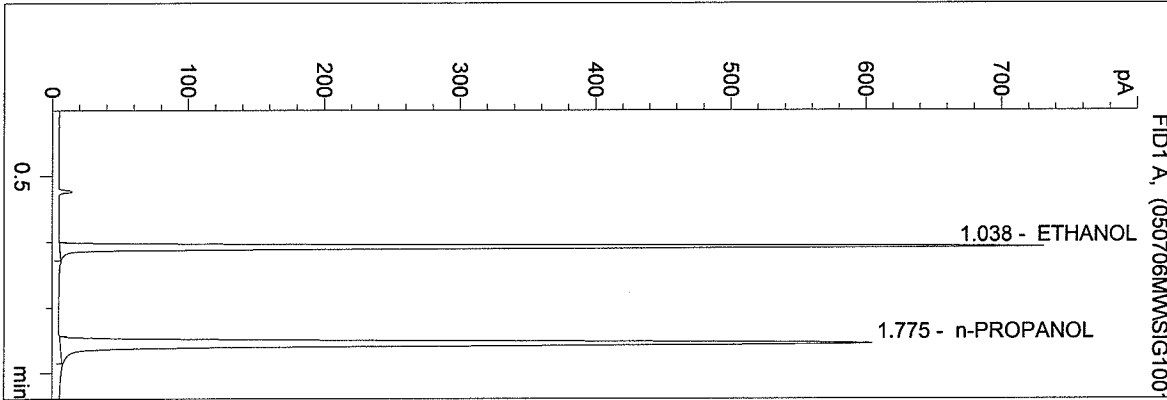
n-PROPANOL 1.000 g/100ml

WASHINGTON STATE TOXICOLOGY LABORATORY

C:\HPCHEM\2\METHODS\BLDALCO3.M
 7/6/2005 1:39:10 PM
 Instrument 3
 db-alc2

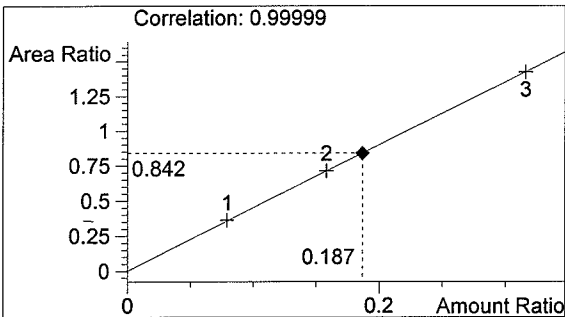
05027 QA
 mary wilson

vial # 19

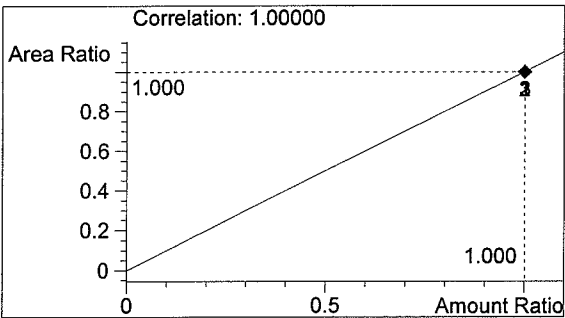


#	Compound	Area	RT
1	ETHANOL	1352	1.038
2	n-PROPANOL	1606	1.775

Totals:



ETHANOL 0.187 g/100ml



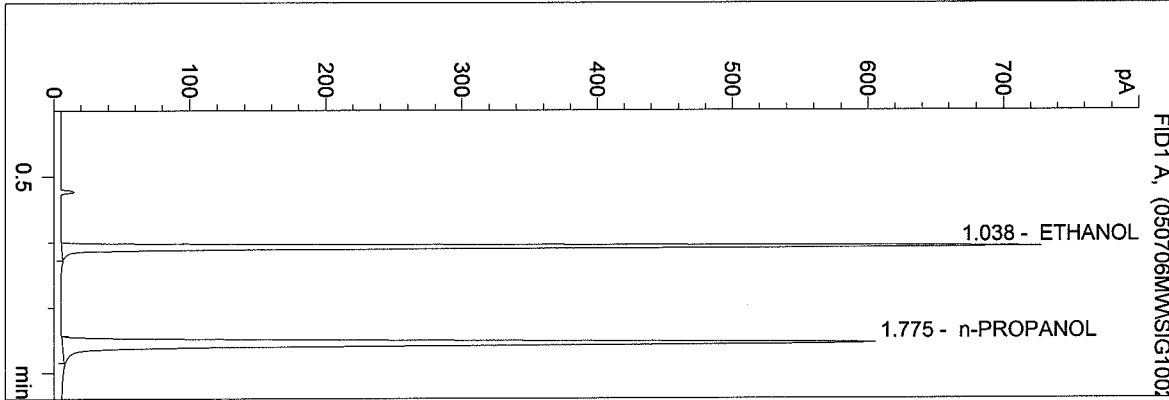
n-PROPANOL 1.000 g/100ml

WASHINGTON STATE TOXICOLOGY LABORATORY

C:\HPCHEM\2\METHODS\BLDALCO3.M
 7/6/2005 1:41:48 PM
 Instrument 3
 db-alc2

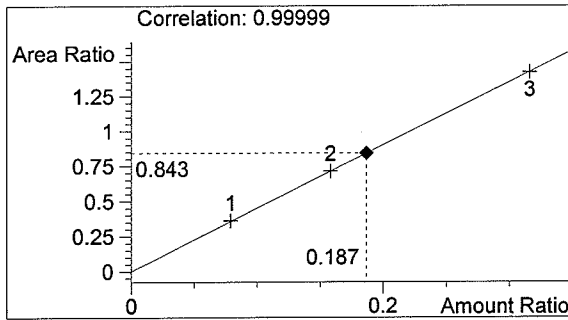
05027 QA
 mary wilson

vial # 20

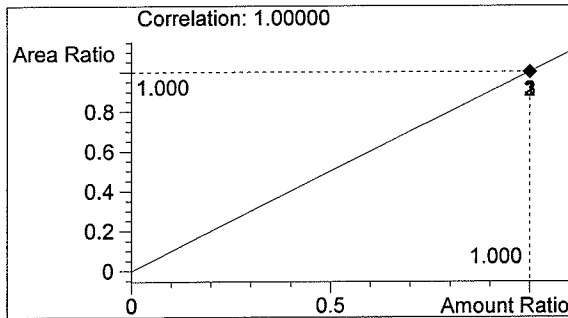


#	Compound	Area	RT
1	ETHANOL	1355	1.038
2	n-PROPANOL	1607	1.775

Totals:



ETHANOL 0.187 g/100ml



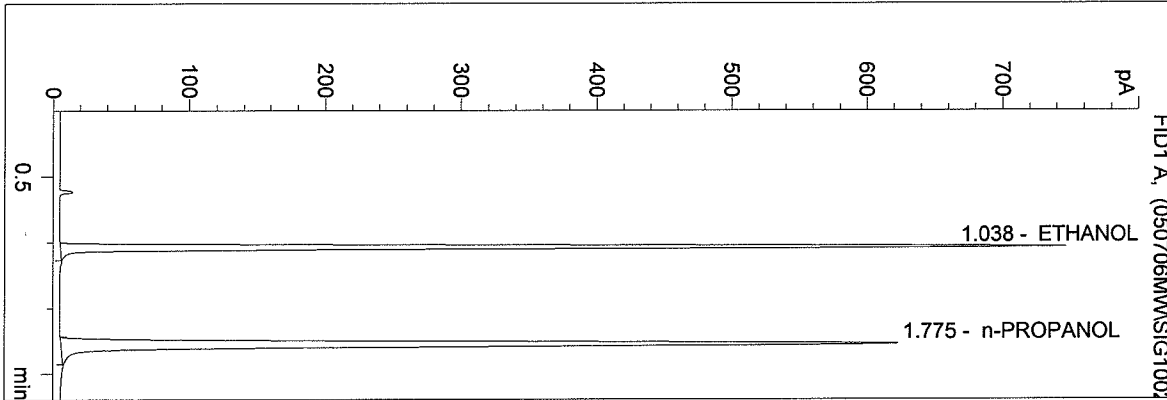
n-PROPANOL 1.000 g/100ml

WASHINGTON STATE TOXICOLOGY LABORATORY

C:\HPCHEM\2\METHODS\BLDALCO3.M
 7/6/2005 1:45:21 PM
 Instrument 3
 db-alc2

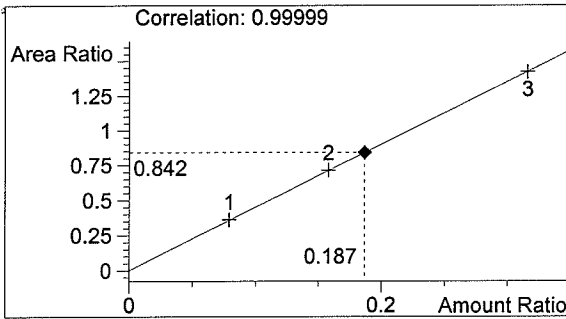
05027 QA
 mary wilson

vial # 21

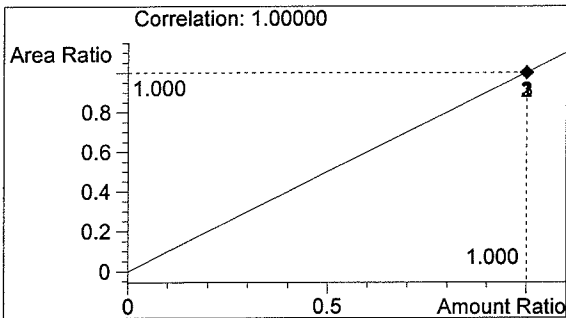


#	Compound	Area	RT
1	ETHANOL	1393	1.038
2	n-PROPANOL	1653	1.775

Totals:



ETHANOL 0.187 g/100ml

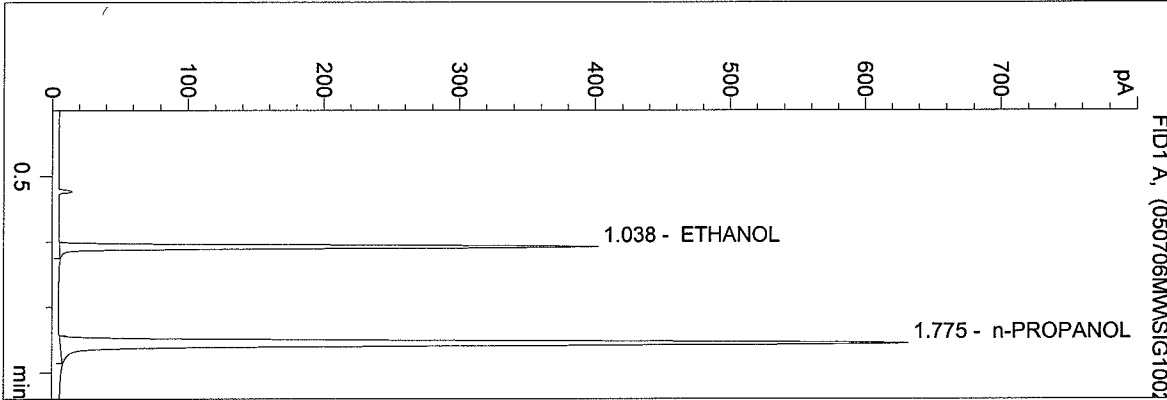


n-PROPANOL 1.000 g/100ml

C:\HPCHEM\2\METHODS\BLDALCO3.M
 7/6/2005 1:48:01 PM
 Instrument 3
 db-alc2

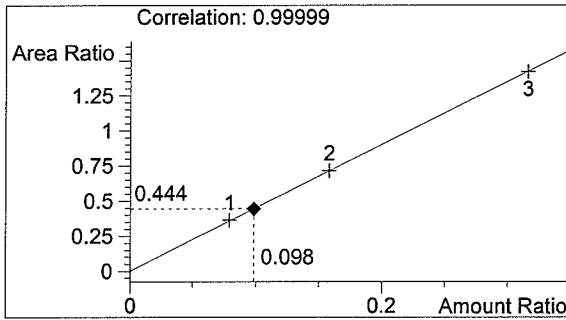
0.10ctlmw
 mary wilson

vial # 22

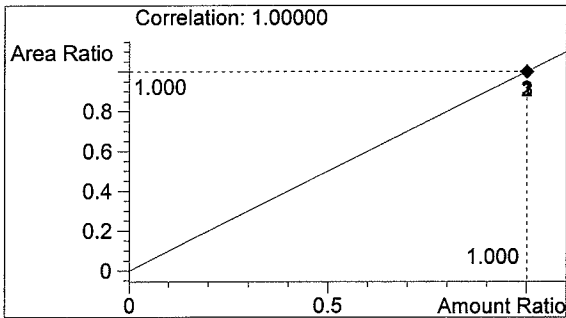


#	Compound	Area	RT
1	ETHANOL	746	1.038
2	n-PROPANOL	1678	1.775

Totals:



ETHANOL 0.098 g/100ml



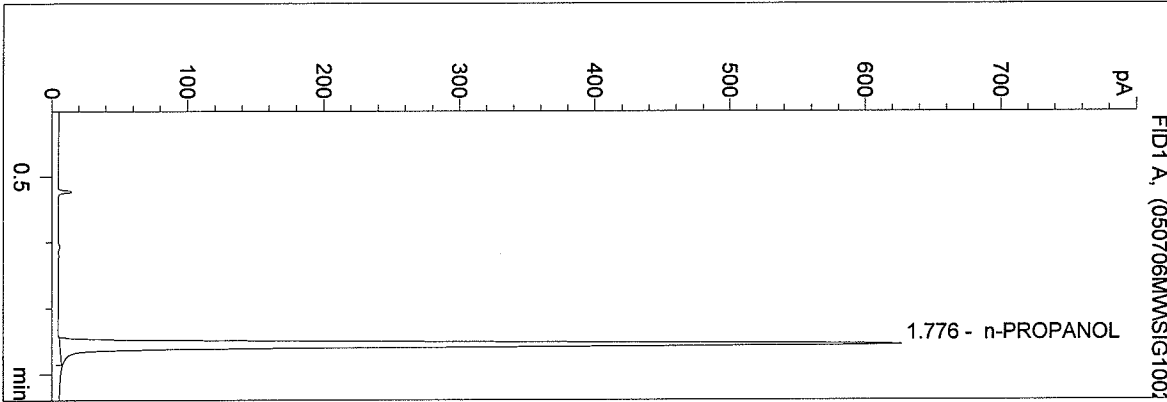
n-PROPANOL 1.000 g/100ml

WASHINGTON STATE TOXICOLOGY LABORATORY

C:\HPCHEM\2\METHODS\BLDALCO3.M
 7/6/2005 1:50:39 PM
 Instrument 3
 db-alc2

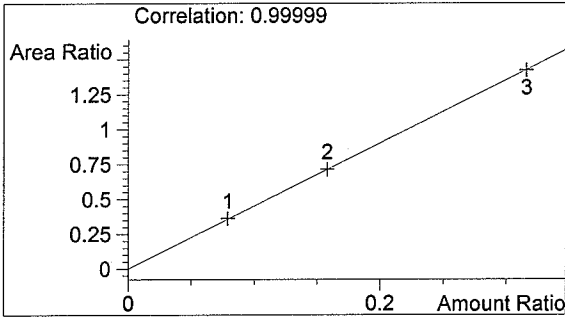
blank
 mary wilson

vial # 23

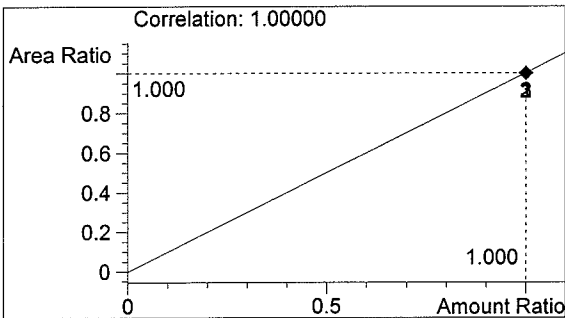


#	Compound	Area	RT
1	ETHANOL	0	0.000
2	n-PROPANOL	1659	1.776

Totals:



ETHANOL 0.000 g/100ml



n-PROPANOL 1.000 g/100ml

Sequence Parameters:

Operator: mary wilson

Data File Naming: Prefix/Counter

Signal 1 Prefix: SIG1
Counter: 0001

Signal 2 Prefix: SIG2
Counter: 0001

Data Directory: C:\HPCHEM\2\DATA\
Data Subdirectory: 050706MW

Part of Methods to run: According to Runtime Checklist

Barcode Reader: not used

Shutdown Cmd/Macro: none

Sequence Comment:

Sequence Table (Front Injector):

Method and Injection Info Part:

Line	Location	SampleName	Method	Inj	SampleType	InjVolume	DataFile
====	=====	=====	=====	===	=====	=====	=====
1	Vial 1	BLANK	BLDALCO3	1	Sample		
2	Vial 2	0.079 CAL	BLDALCO3	1	Calib		
3	Vial 3	0.158 CAL	BLDALCO3	1	Calib		
4	Vial 4	0.316 CAL	BLDALCO3	1	Calib		
5	Vial 5	BLANK	BLDALCO3	1	Sample		
6	Vial 6	0.04 CAP	BLDALCO3	1	Ctrl Samp		
7	Vial 7	0.10 CONTROL	BLDALCO3	1	Ctrl Samp		
8	Vial 8	0.20 CONTROL	BLDALCO3	1	Ctrl Samp		
9	Vial 9	BLANK	BLDALCO3	1	Sample		
10	Vial 10	05028sim sol	BLDALCO3	1	Sample		
11	Vial 11	05028sim sol	BLDALCO3	1	Sample		
12	Vial 12	05028sim sol	BLDALCO3	1	Sample		
13	Vial 13	05028sim sol	BLDALCO3	1	Sample		
14	Vial 14	05028sim sol	BLDALCO3	1	Sample		
15	Vial 15	0.10ctlmw	BLDALCO3	1	Ctrl Samp		
16	Vial 16	blank	BLDALCO3	1	Sample		
17	Vial 17	05027 QA	BLDALCO3	1	Sample		
18	Vial 18	05027 QA	BLDALCO3	1	Sample		
19	Vial 19	05027 QA	BLDALCO3	1	Sample		
20	Vial 20	05027 QA	BLDALCO3	1	Sample		
21	Vial 21	05027 QA	BLDALCO3	1	Sample		
22	Vial 22	0.10ctlmw	BLDALCO3	1	Ctrl Samp		
23	Vial 23	blank	BLDALCO3	1	Sample		

Sequence Table (Back Injector):

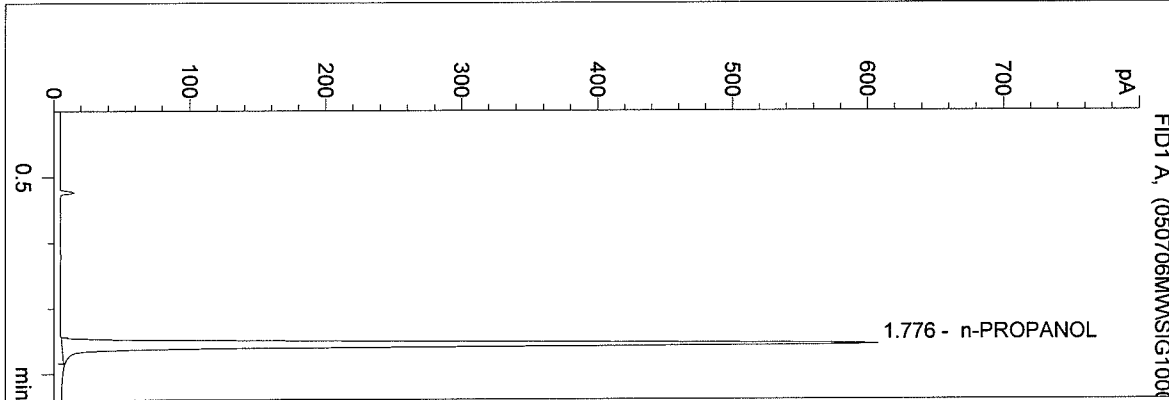
No entries - empty table!

WASHINGTON STATE TOXICOLOGY LABORATORY

C:\HPCHEM\2\METHODS\BLDALCO3.M
 7/6/2005 12:47:59 PM
 Instrument 3
 db-alc2

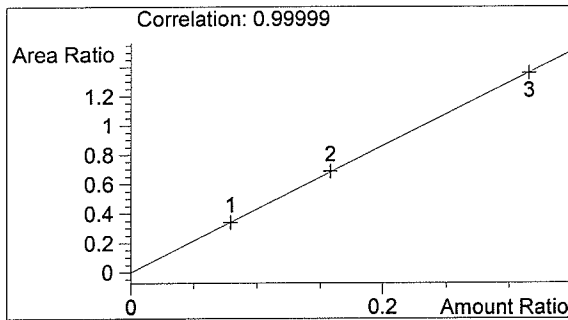
BLANK
 mary wilson

vial # 1

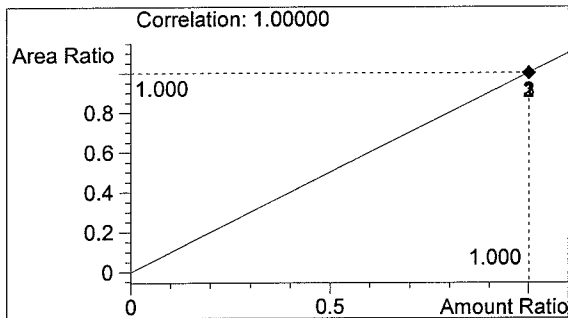


#	Compound	Area	RT
1	ETHANOL	0	0.000
2	n-PROPANOL	1610	1.776

Totals:



ETHANOL 0.000 g/100ml



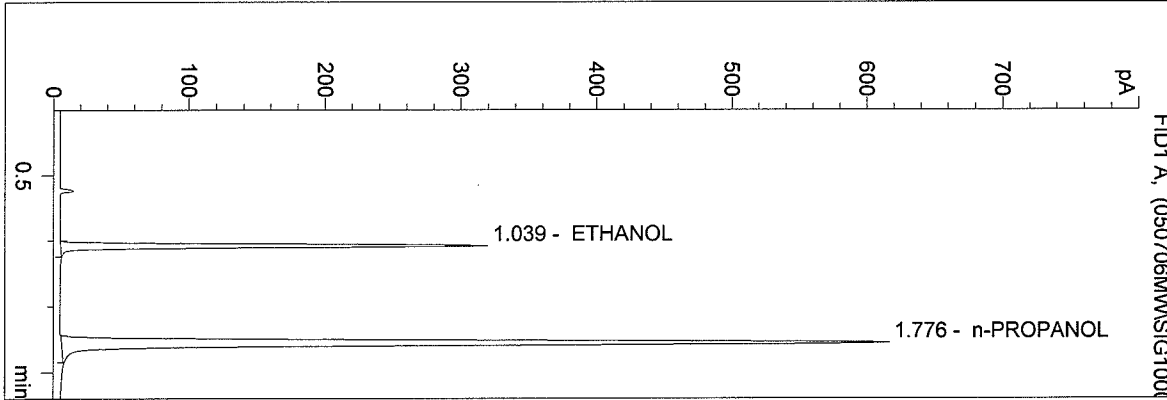
n-PROPANOL 1.000 g/100ml

WASHINGTON STATE TOXICOLOGY LABORATORY

C:\HPCHEM\2\METHODS\BLDALCO3.M
 7/6/2005 12:50:39 PM
 Instrument 3
 db-alc2

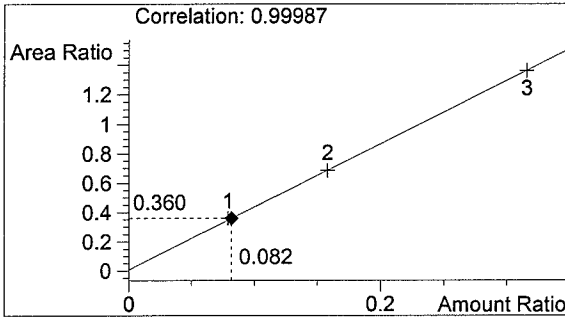
0.079 CAL
 mary wilson

vial # 2

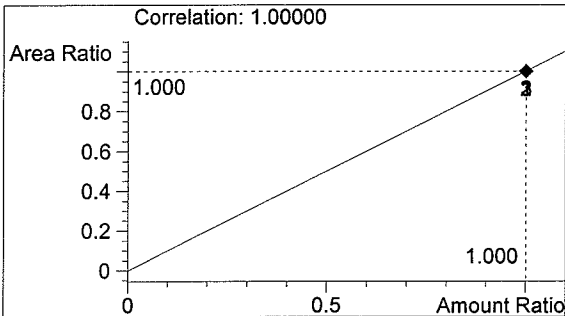


#	Compound	Area	RT
1	ETHANOL	590	1.039
2	n-PROPANOL	1636	1.776

Totals:



ETHANOL 0.082 g/100ml

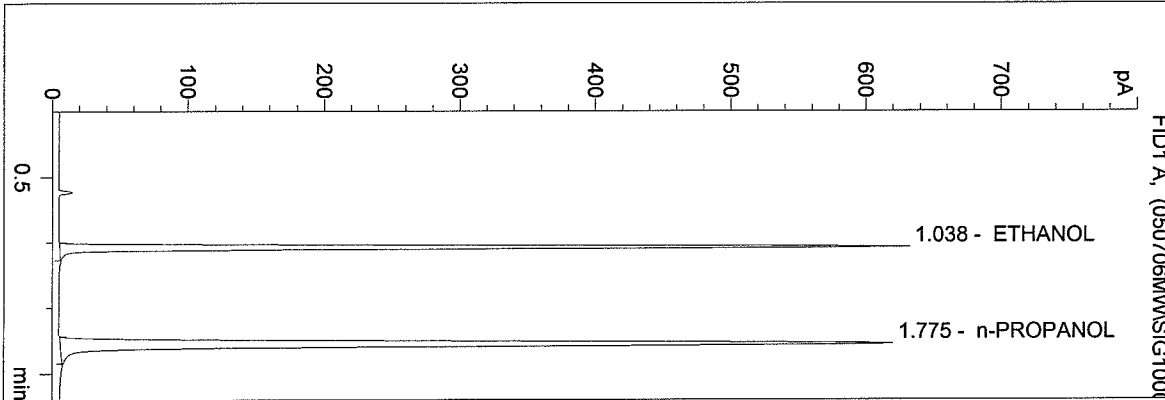


n-PROPANOL 1.000 g/100ml

C:\HPCHEM\2\METHODS\BLDALCO3.M
 7/6/2005 12:53:20 PM
 Instrument 3
 db-alc2

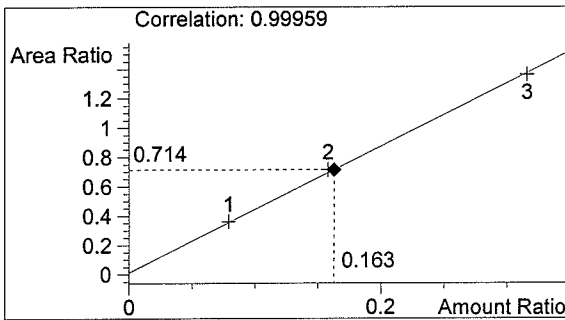
0.158 CAL
 mary wilson

vial # 3

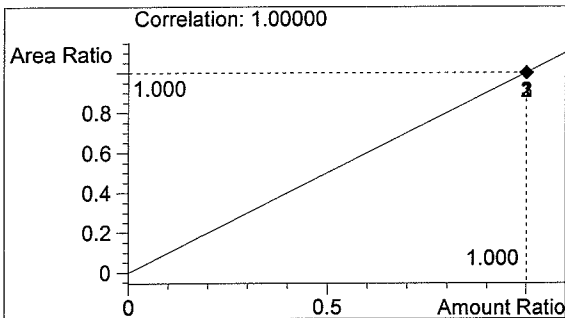


#	Compound	Area	RT
1	ETHANOL	1175	1.038
2	n-PROPANOL	1645	1.775

Totals:



ETHANOL 0.163 g/100ml



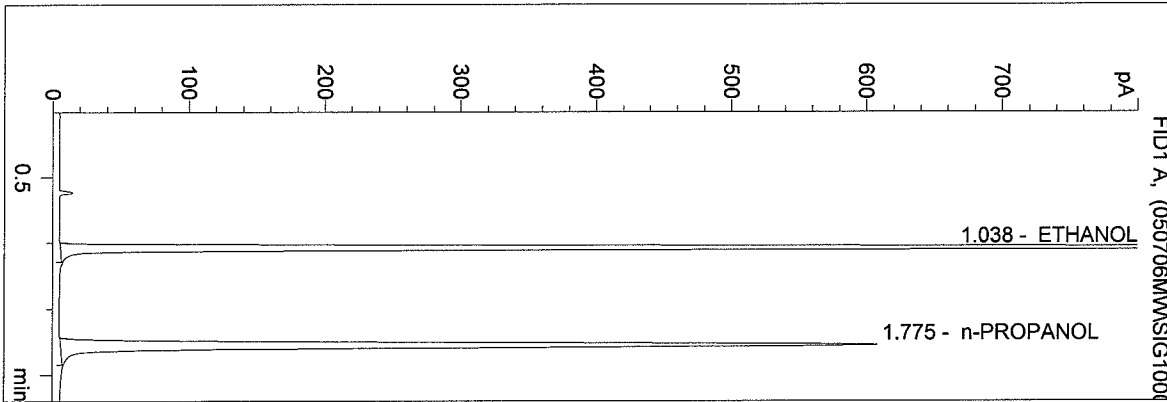
n-PROPANOL 1.000 g/100ml

WASHINGTON STATE TOXICOLOGY LABORATORY

C:\HPCHEM\2\METHODS\BLDALCO3.M
 7/6/2005 12:56:02 PM
 Instrument 3
 db-alc2

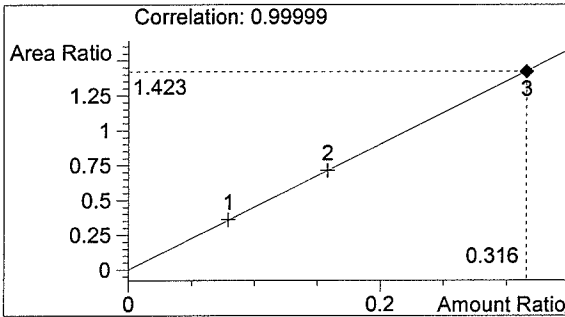
0.316 CAL
 mary wilson

vial # 4

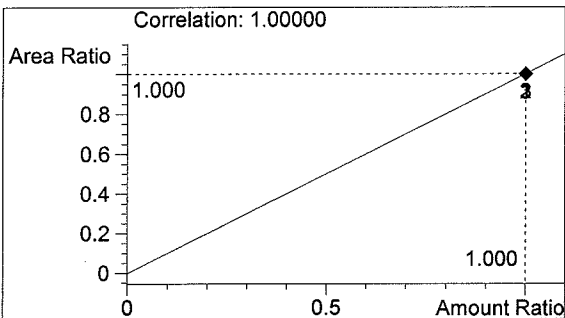


#	Compound	Area	RT
1	ETHANOL	2297	1.038
2	n-PROPANOL	1613	1.775

Totals:



ETHANOL 0.316 g/100ml



n-PROPANOL 1.000 g/100ml

WASHINGTON STATE TOXICOLOGY LABORATORY

C:\HPCHEM\2\METHODS\BLDALCO3.M

7/6/2005 12:59:27 PM

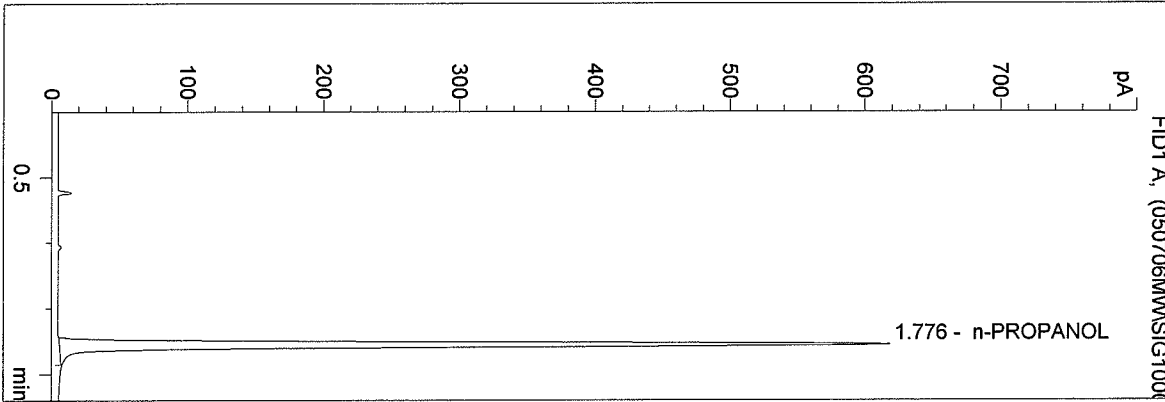
Instrument 3

db-alc2

BLANK

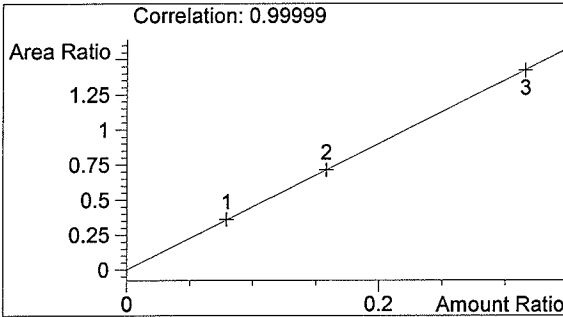
mary wilson

vial # 5

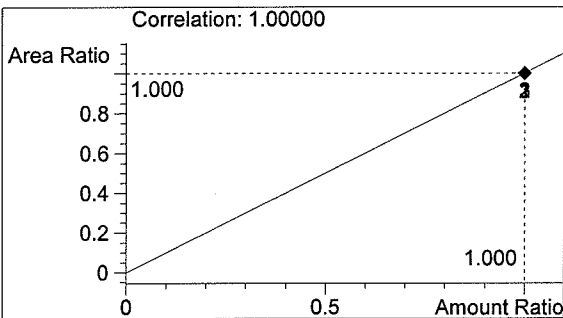


#	Compound	Area	RT
1	ETHANOL	0	0.000
2	n-PROPANOL	1643	1.776

Totals:



ETHANOL 0.000 g/100ml

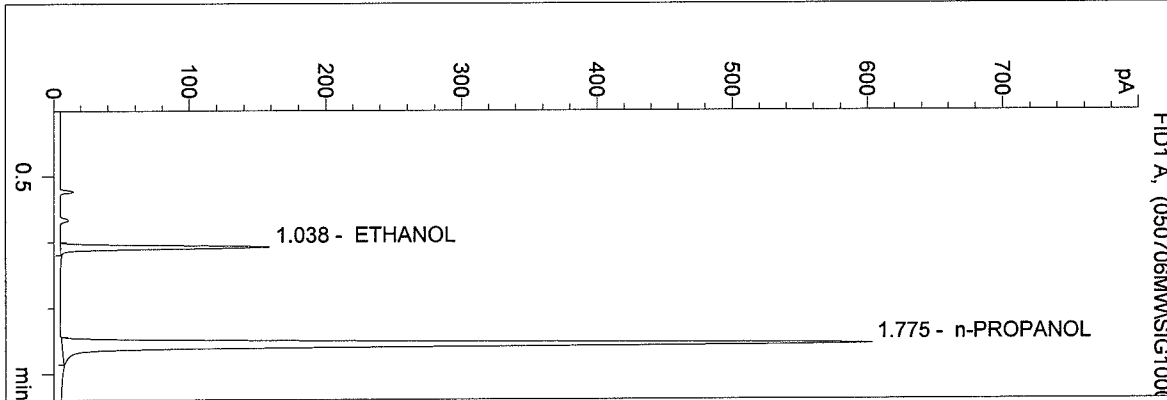


n-PROPANOL 1.000 g/100ml

C:\HPCHEM\2\METHODS\BLDALCO3.M
 7/6/2005 1:02:05 PM
 Instrument 3
 db-alc2

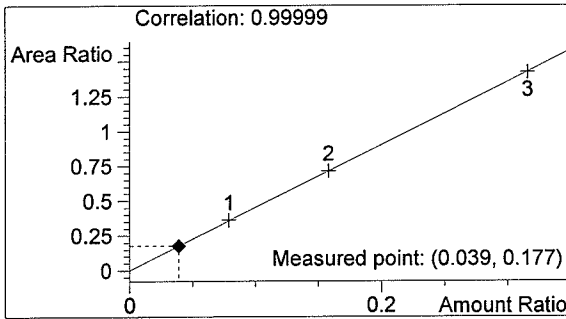
0.04 CAP
 mary wilson

vial # 6

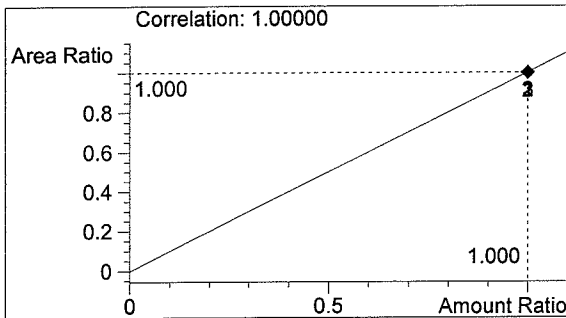


#	Compound	Area	RT
1	ETHANOL	284	1.038
2	n-PROPANOL	1603	1.775

Totals:



ETHANOL 0.039 g/100ml

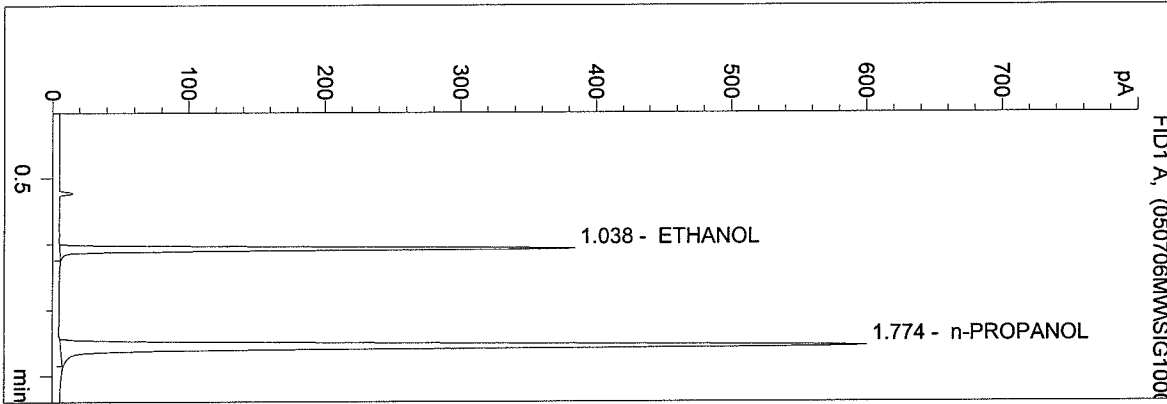


n-PROPANOL 1.000 g/100ml

C:\HPCHEM\2\METHODS\BLDALCO3.M
 7/6/2005 1:04:48 PM
 Instrument 3
 db-alc2

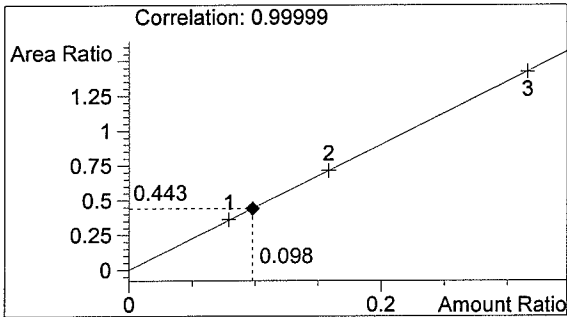
0.10 CONTROL
 mary wilson

vial # 7

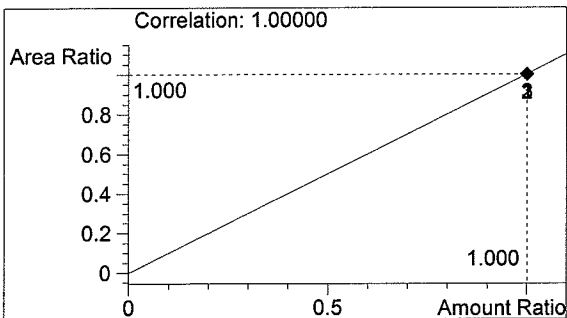


#	Compound	Area	RT
1	ETHANOL	706	1.038
2	n-PROPANOL	1594	1.774

Totals:



ETHANOL 0.098 g/100ml

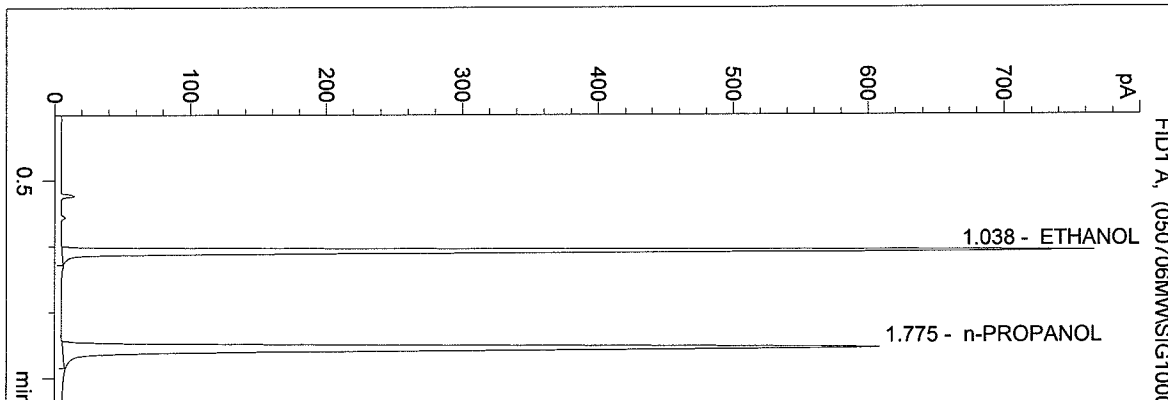


n-PROPANOL 1.000 g/100ml

C:\HPCHEM\2\METHODS\BLDALCO3.M
 7/6/2005 1:07:29 PM
 Instrument 3
 db-alc2

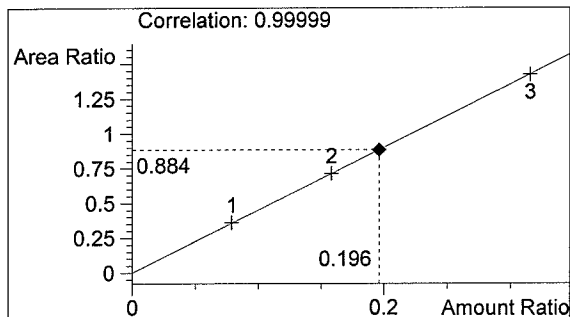
0.20 CONTROL
 mary wilson

vial # 8

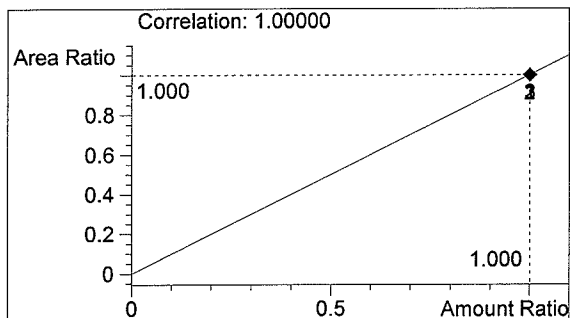


#	Compound	Area	RT
1	ETHANOL	1429	1.038
2	n-PROPANOL	1615	1.775

Totals:



ETHANOL 0.196 g/100ml

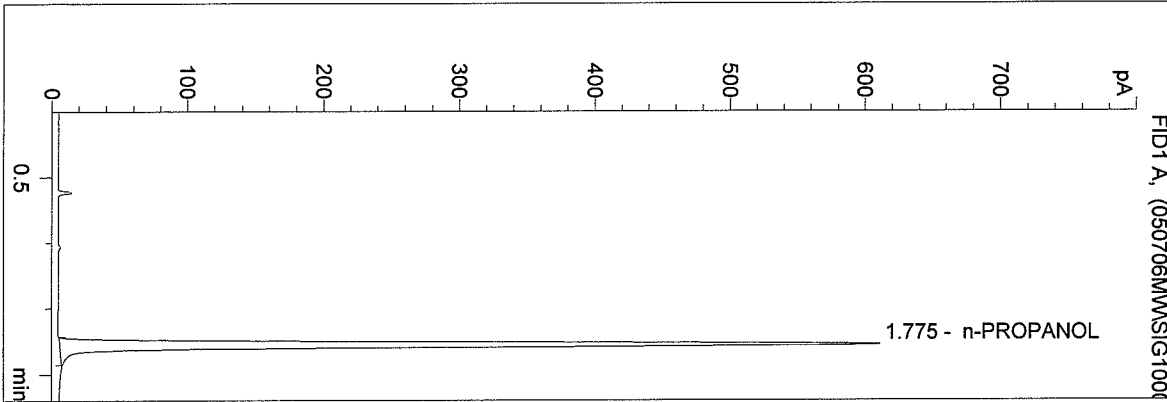


n-PROPANOL 1.000 g/100ml

C:\HPCHEM\2\METHODS\BLDALCO3.M
 7/6/2005 1:10:56 PM
 Instrument 3
 db-alc2

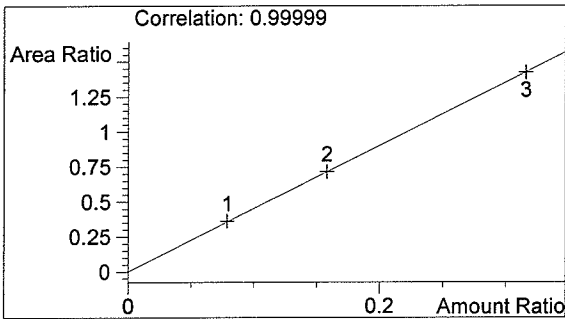
BLANK
 mary wilson

vial # 9

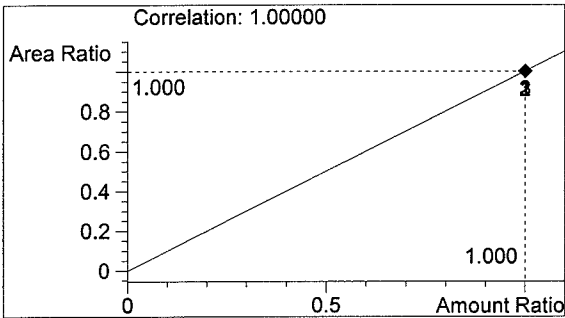


#	Compound	Area	RT
1	ETHANOL	0	0.000
2	n-PROPANOL	1626	1.775

Totals:



ETHANOL 0.000 g/100ml

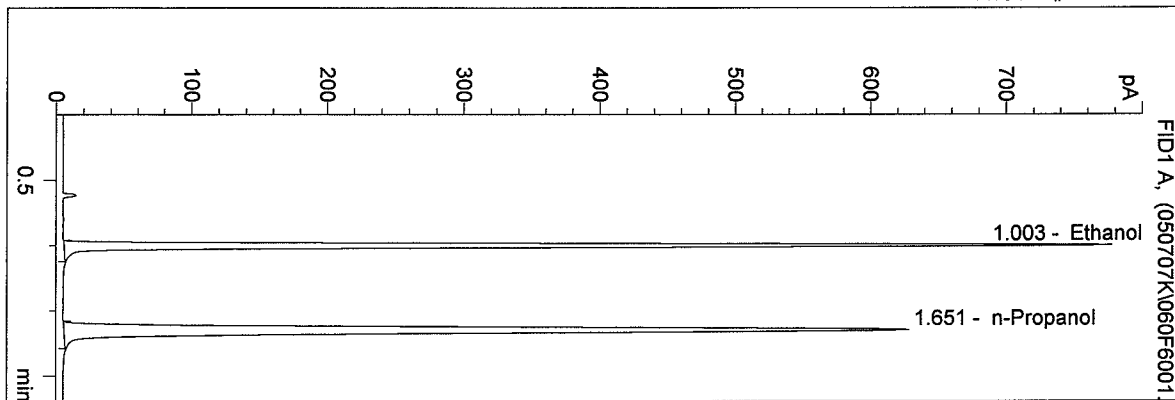


n-PROPANOL 1.000 g/100ml

D:\HPCHEM\1\METHODS\BLDALCO.M
 7/7/2005 2:14:41 PM
 Instrument 4
 DB-ALC1

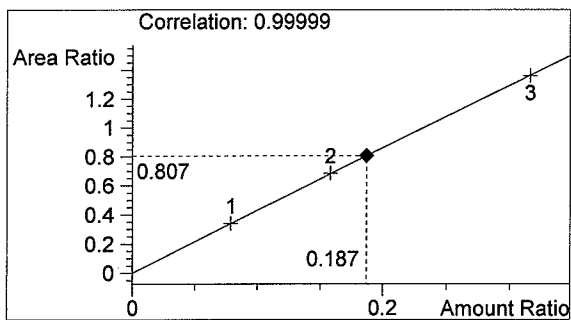
QA 05027 KG #1
 Kari Gruendell

vial # 60

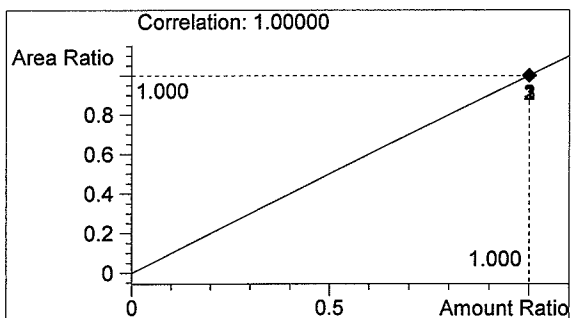


#	Compound	Area	RT
1	Ethanol	1585	1.003
2	n-Propanol	1965	1.651

Totals:



Ethanol 0.187 g/100ml

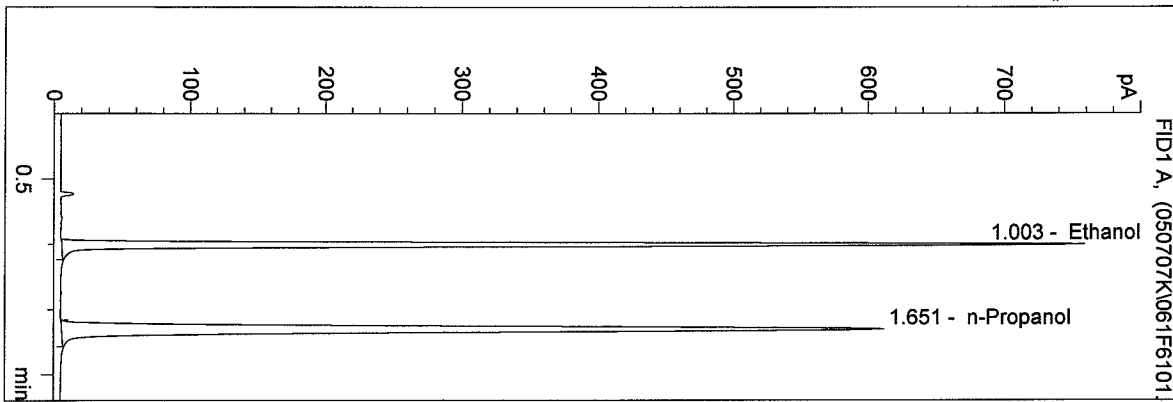


n-Propanol 1.000 g/100ml

D:\HPCHEM\1\METHODS\BLDALCO.M
 7/7/2005 2:18:01 PM
 Instrument 4
 DB-ALC1

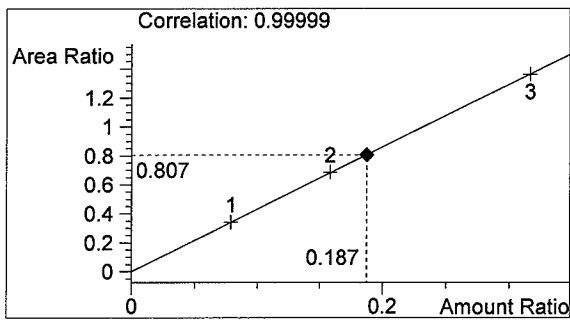
QA 05027 KG #2
 Kari Gruendell

vial # 61

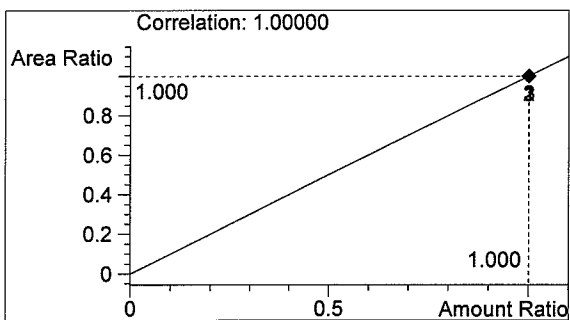


#	Compound	Area	RT
1	Ethanol	1539	1.003
2	n-Propanol	1907	1.651

Totals:



Ethanol 0.187 g/100ml

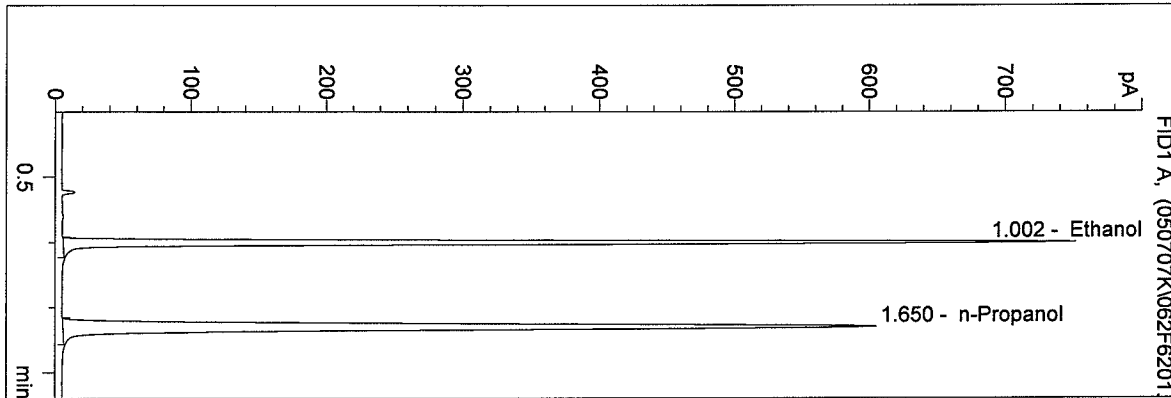


n-Propanol 1.000 g/100ml

D:\HPCHEM\1\METHODS\BLDALCO.M
 7/7/2005 2:26:35 PM
 Instrument 4
 DB-ALC1

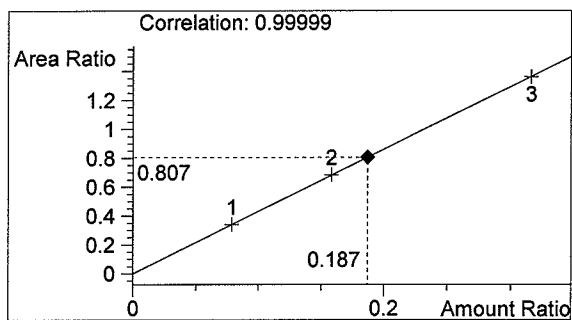
QA 05027 KG #3
 Kari Gruendell

vial # 62

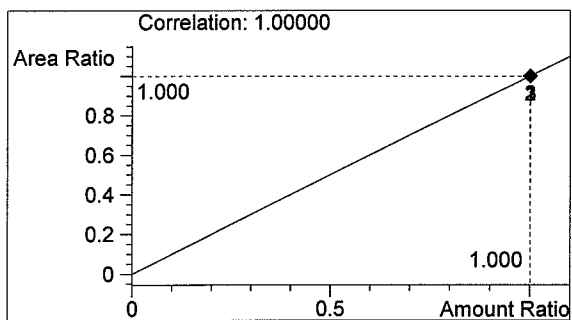


#	Compound	Area	RT
1	Ethanol	1524	1.002
2	n-Propanol	1889	1.650

Totals:



Ethanol 0.187 g/100ml

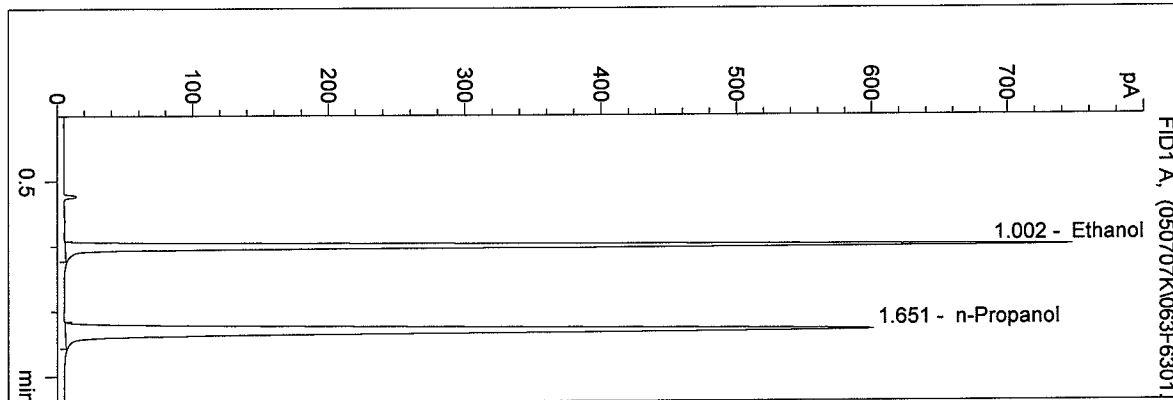


n-Propanol 1.000 g/100ml

D:\HPCHEM\1\METHODS\BLDALCO.M
 7/7/2005 2:29:54 PM
 Instrument 4
 DB-ALC1

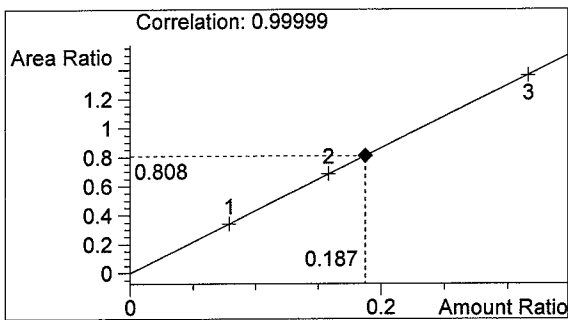
QA 05027 KG #4
 Kari Gruendell

vial # 63

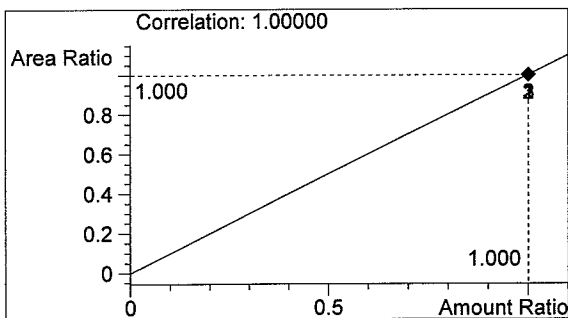


#	Compound	Area	RT
1	Ethanol	1516	1.002
2	n-Propanol	1875	1.651

Totals:



Ethanol 0.187 g/100ml

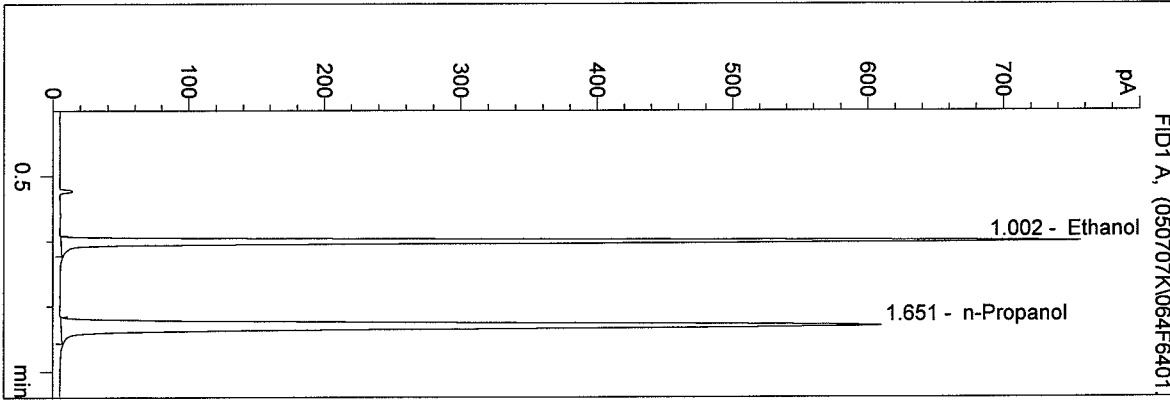


n-Propanol 1.000 g/100ml

D:\HPCHEM\1\METHODS\BLDALCO.M
 7/7/2005 2:33:07 PM
 Instrument 4
 DB-ALC1

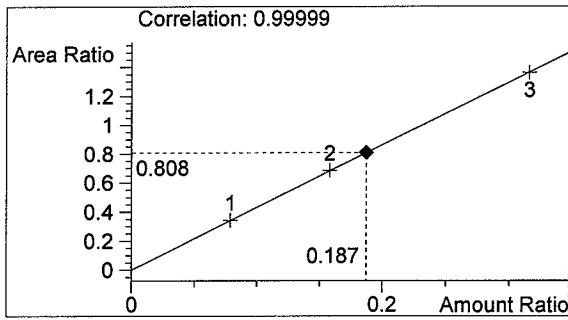
QA 05027 KG #5
 Kari Gruendell

vial # 64

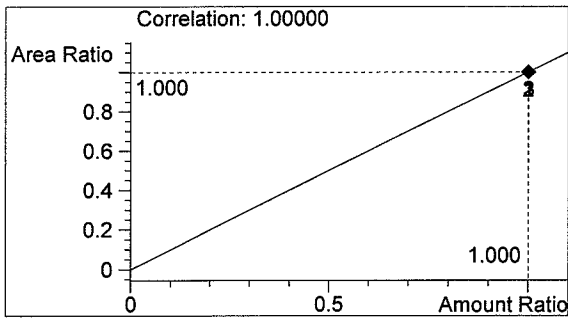


#	Compound	Area	RT
1	Ethanol	1536	1.002
2	n-Propanol	1900	1.651

Totals:



Ethanol 0.187 g/100ml

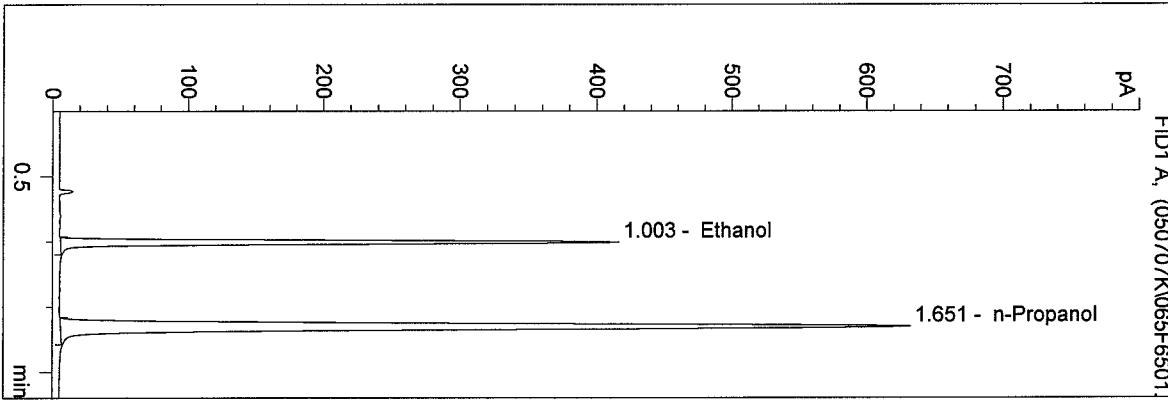


n-Propanol 1.000 g/100ml

D:\HPCHEM\1\METHODS\BLDALCO.M
 7/7/2005 2:36:17 PM
 Instrument 4
 DB-ALC1

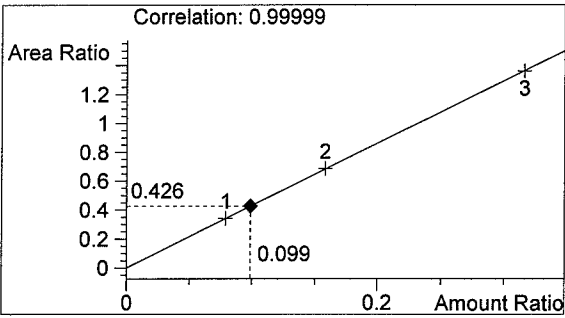
0.10 CONTROL KG
 Kari Gruendell

vial # 65

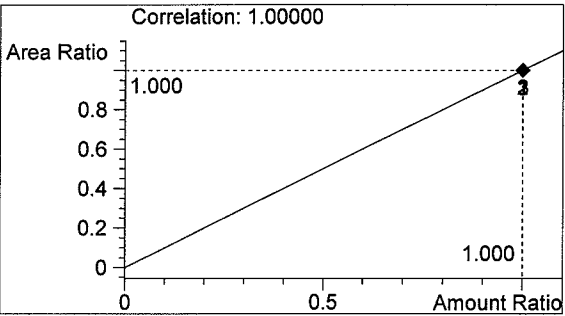


#	Compound	Area	RT
1	Ethanol	842	1.003
2	n-Propanol	1975	1.651

Totals:



Ethanol 0.099 g/100ml

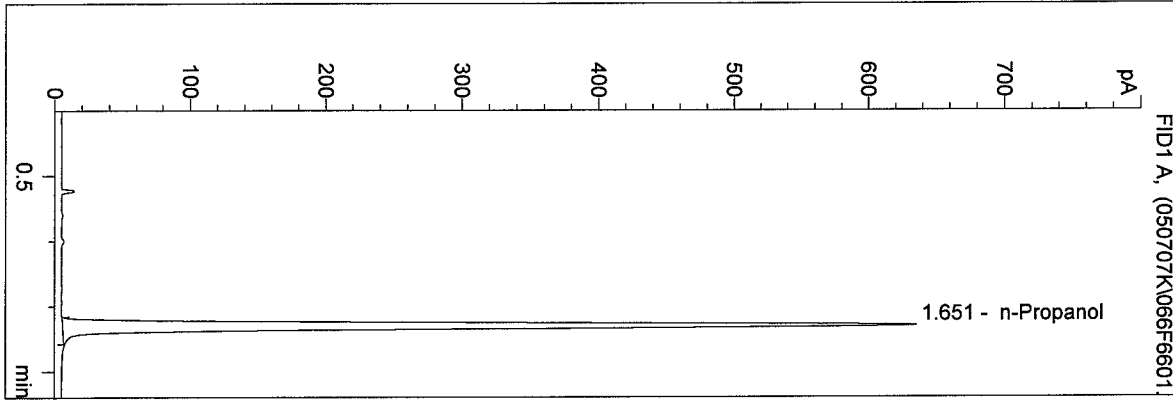


n-Propanol 1.000 g/100ml

D:\HPCHEM\1\METHODS\BLDALCO.M
 7/7/2005 2:39:37 PM
 Instrument 4
 DB-ALC1

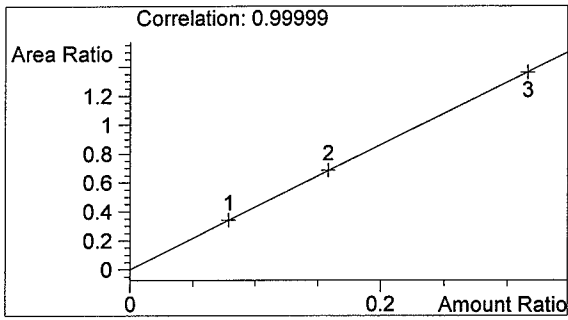
BLANK
 Kari Gruendell

vial # 66

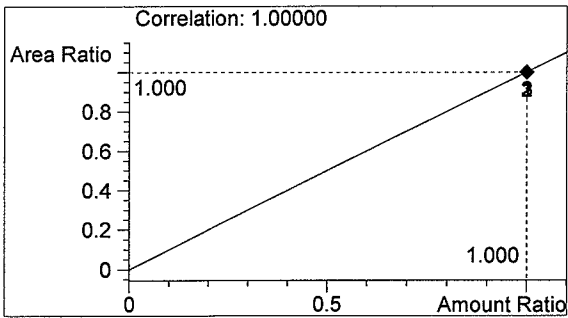


#	Compound	Area	RT
1	Ethanol	0	0.000
2	n-Propanol	1986	1.651

Totals:



Ethanol 0.000 g/100ml

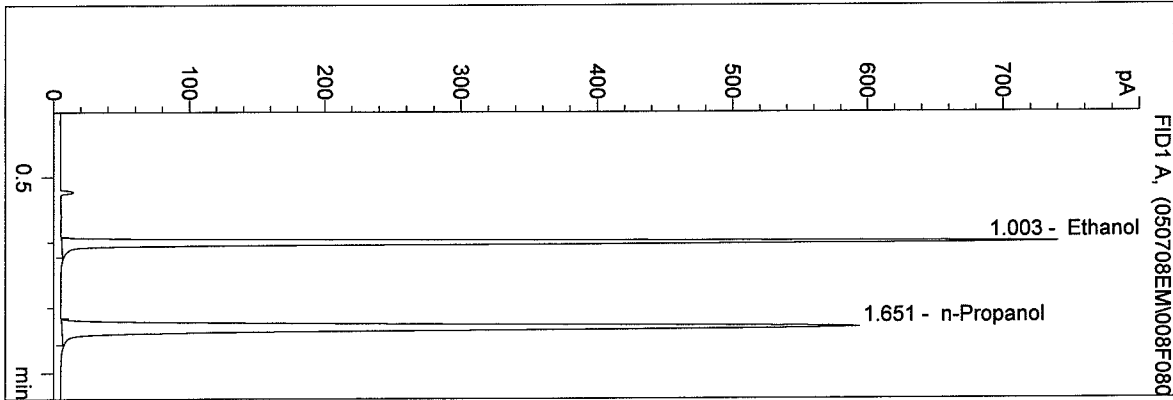


n-Propanol 1.000 g/100ml

D:\HPCHEM\1\METHODS\BLDALCO.M
 7/8/2005 7:25:04 AM
 Instrument 4
 DB-ALC1

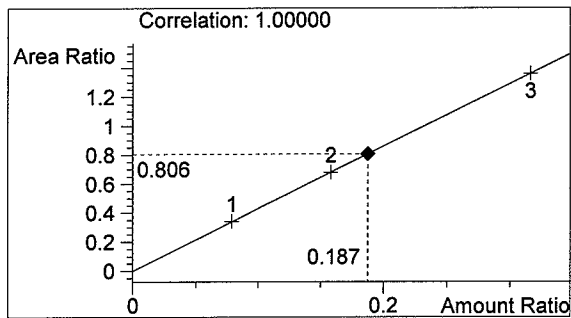
QA Sim 05027-1
 Estuardo J. Miranda

vial # 8

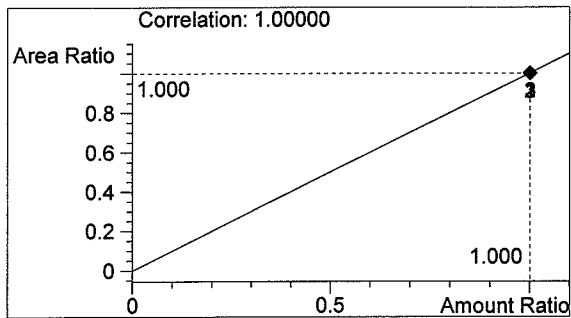


#	Compound	Area	RT
1	Ethanol	1488	1.003
2	n-Propanol	1846	1.651

Totals:



Ethanol 0.187 g/100ml

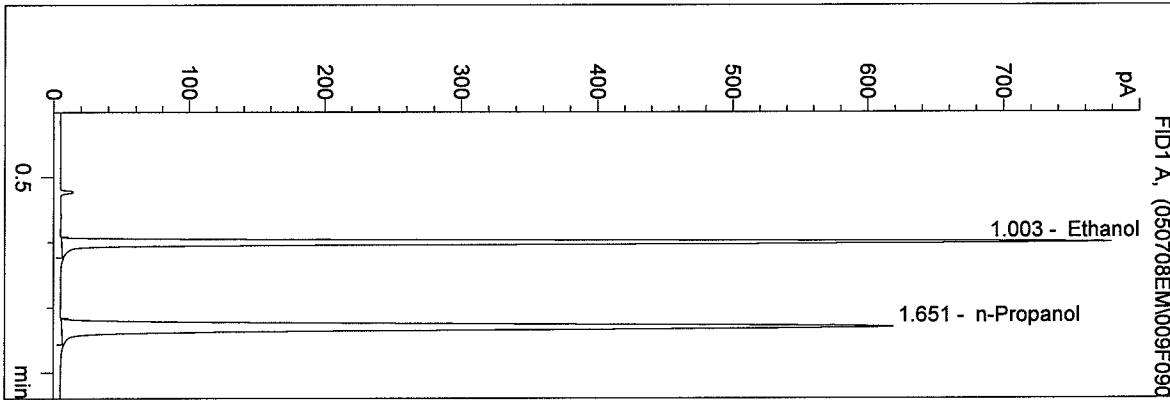


n-Propanol 1.000 g/100ml

D:\HPCHEM\1\METHODS\BLDALCO.M
 7/8/2005 7:28:23 AM
 Instrument 4
 DB-ALC1

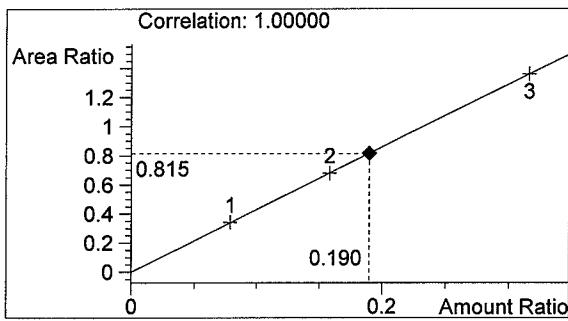
QA Sim 05027-2
 Estuardo J. Miranda

vial # 9

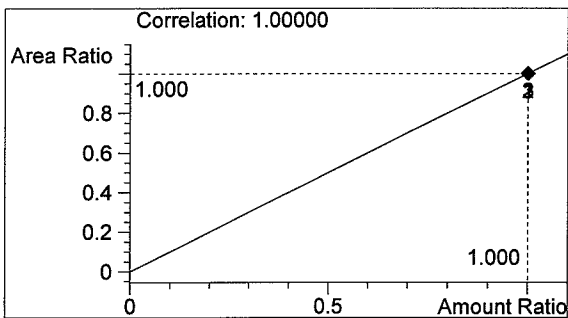


#	Compound	Area	RT
1	Ethanol	1572	1.003
2	n-Propanol	1928	1.651

Totals:



Ethanol 0.190 g/100ml

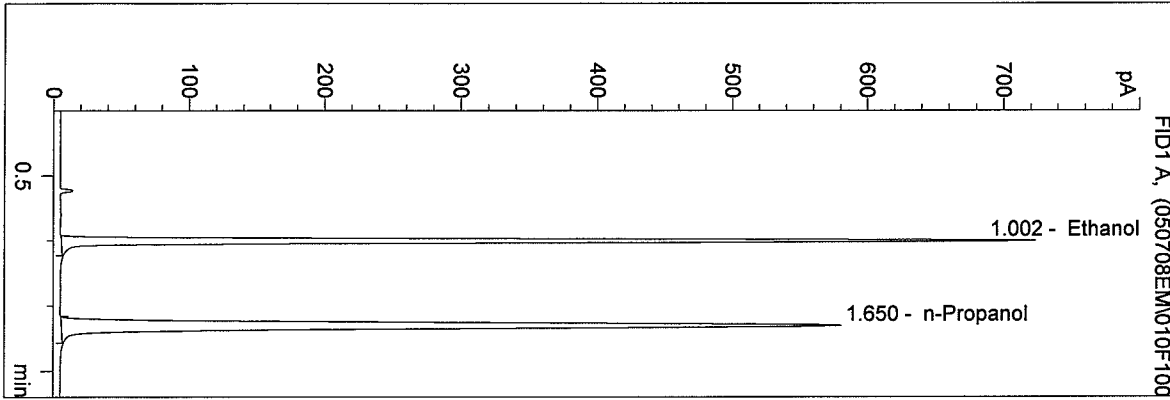


n-Propanol 1.000 g/100ml

D:\HPCHEM\1\METHODS\BLDALCO.M
 7/8/2005 7:31:40 AM
 Instrument 4
 DB-ALC1

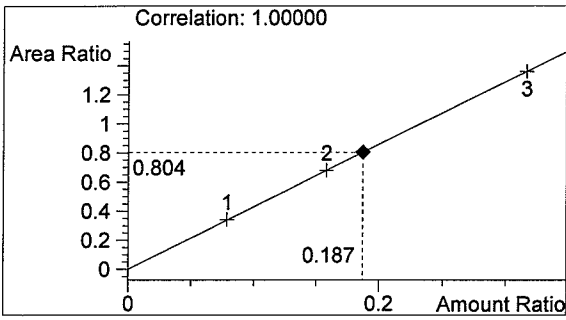
QA Sim 05027-3
 Estuardo J. Miranda

vial # 10

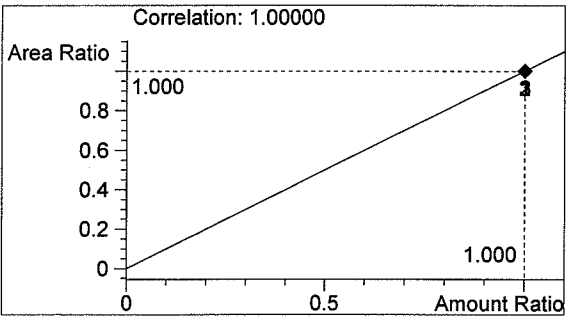


#	Compound	Area	RT
1	Ethanol	1451	1.002
2	n-Propanol	1805	1.650

Totals:



Ethanol 0.187 g/100ml

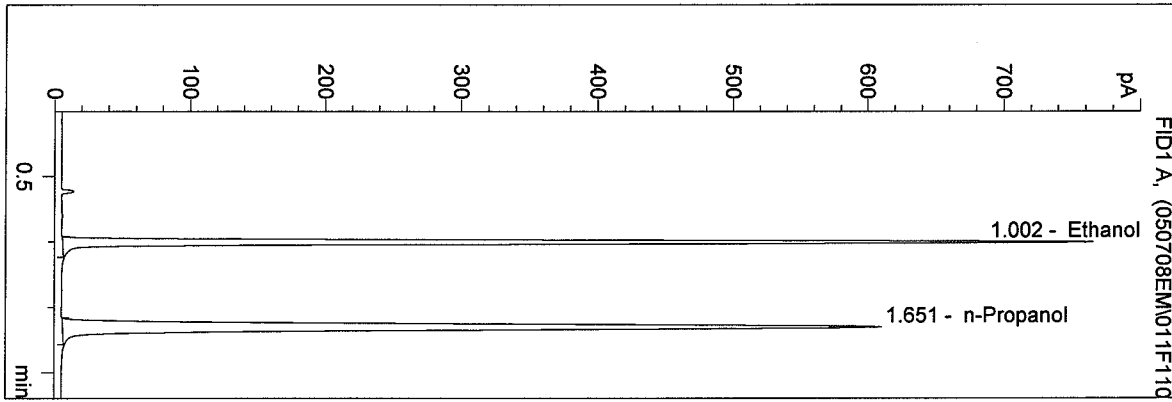


n-Propanol 1.000 g/100ml

D:\HPCHEM\1\METHODS\BLDALCO.M
 7/8/2005 7:34:52 AM
 Instrument 4
 DB-ALC1

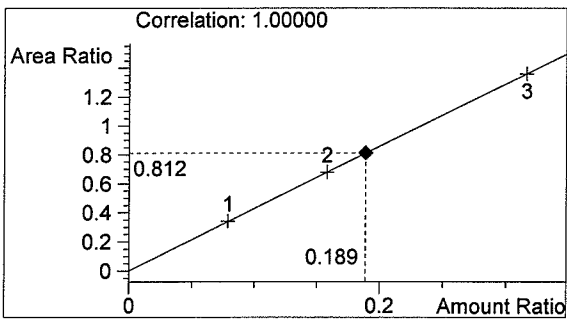
QA Sim 05027-4
 Estuardo J. Miranda

vial # 11

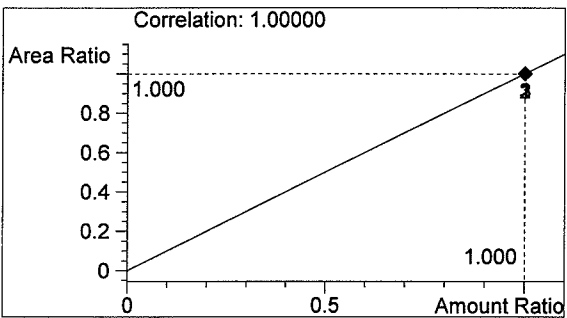


#	Compound	Area	RT
1	Ethanol	1543	1.002
2	n-Propanol	1900	1.651

Totals:



Ethanol 0.189 g/100ml

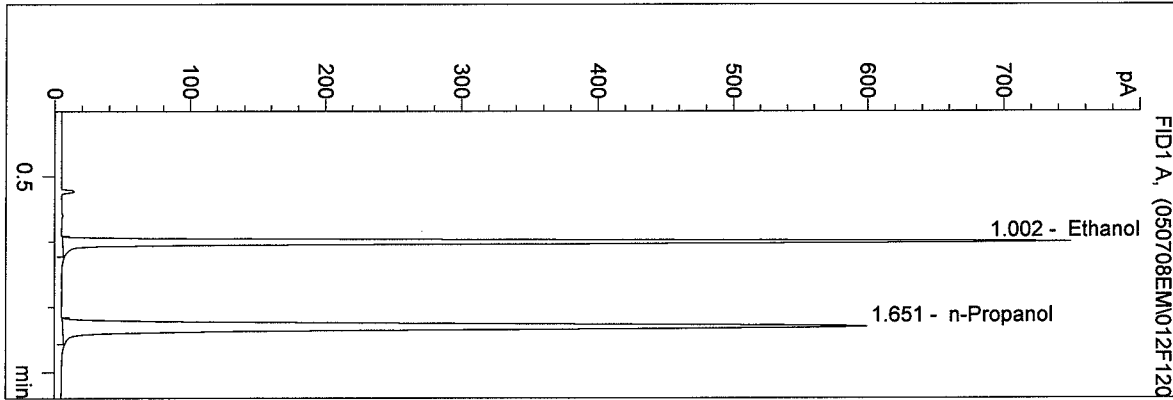


n-Propanol 1.000 g/100ml

D:\HPCHEM\1\METHODS\BLDALCO.M
 7/8/2005 7:38:13 AM
 Instrument 4
 DB-ALC1

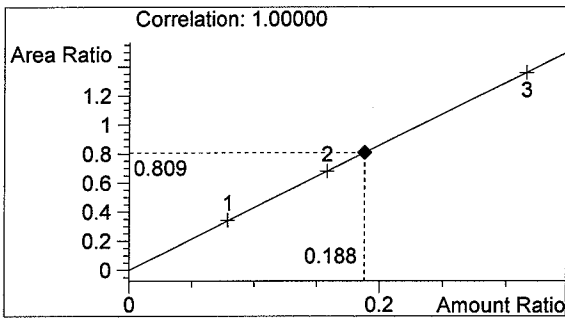
QA Sim 05027-5
 Estuardo J. Miranda

vial # 12

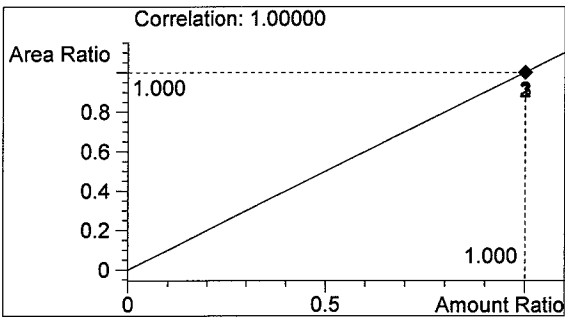


#	Compound	Area	RT
1	Ethanol	1506	1.002
2	n-Propanol	1862	1.651

Totals:



Ethanol 0.188 g/100ml

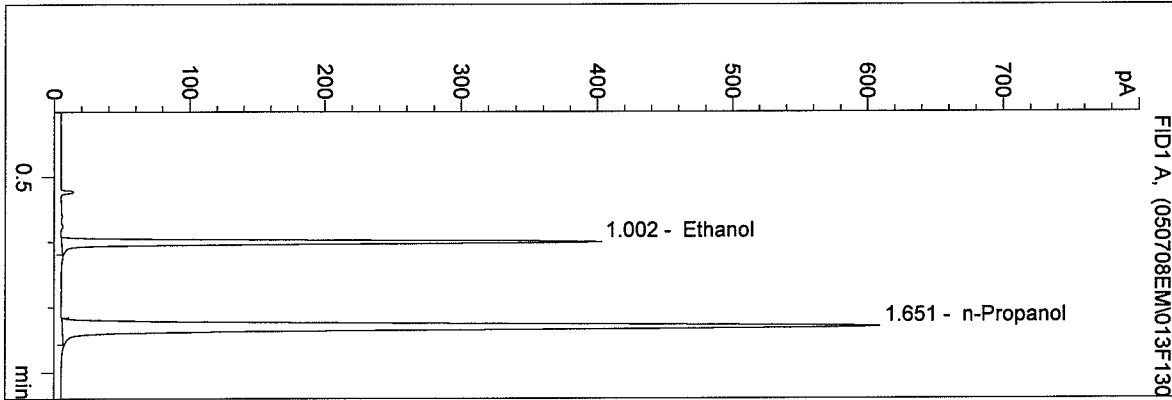


n-Propanol 1.000 g/100ml

D:\HPCHEM\1\METHODS\BLDALCO.M
 7/8/2005 7:41:33 AM
 Instrument 4
 DB-ALC1

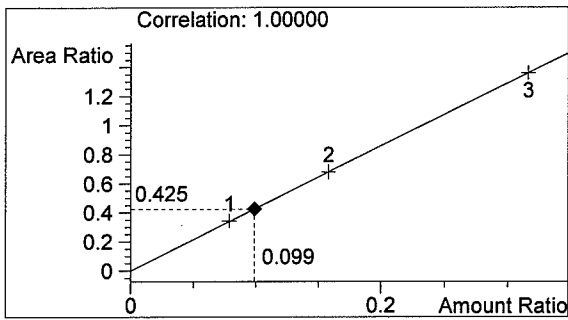
0.100 Control
 Estuardo J. Miranda

vial # 13

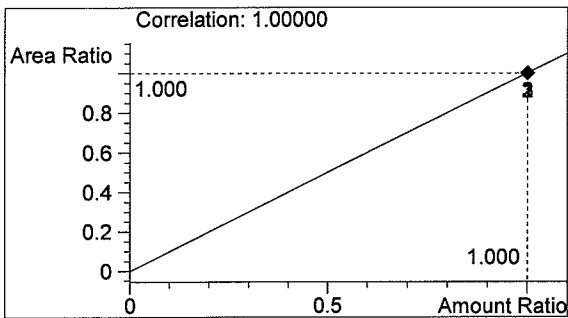


#	Compound	Area	RT
1	Ethanol	805	1.002
2	n-Propanol	1895	1.651

Totals:



Ethanol 0.099 g/100ml

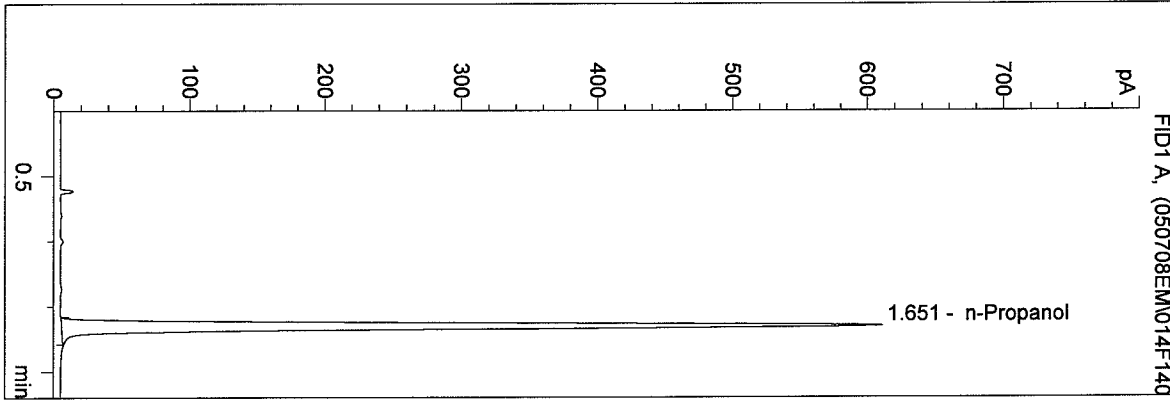


n-Propanol 1.000 g/100ml

D:\HPCHEM\1\METHODS\BLDALCO.M
 7/8/2005 7:44:51 AM
 Instrument 4
 DB-ALC1

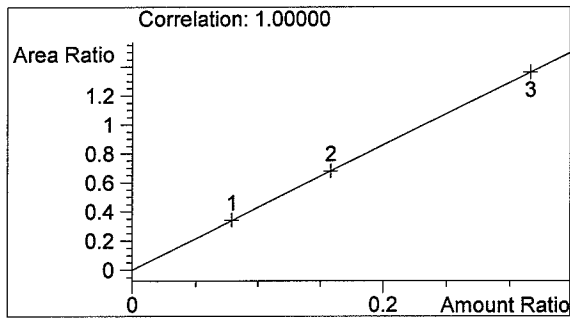
Blank
 Estuardo J. Miranda

vial # 14

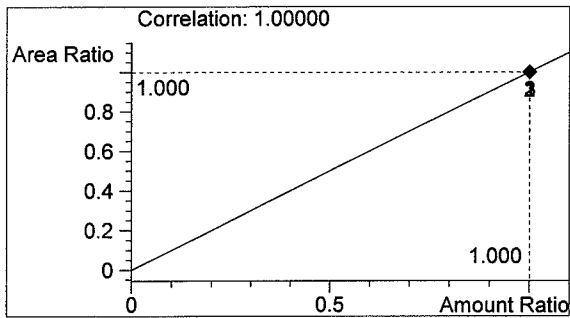


#	Compound	Area	RT
1	Ethanol	0	0.000
2	n-Propanol	1901	1.651

Totals:



Ethanol 0.000 g/100ml



n-Propanol 1.000 g/100ml