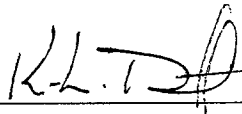


Notice of Simulator Solution File Review

At the request of the State Toxicologist a review of the following simulator solution records has been accomplished. The following file consists of simulator solution analyses performed and completed by the State Toxicology Laboratory for a specific batch number. The file contains the simulator solution data entry form along with a file review record and the chromatograms generated by the Toxicology Laboratory during the analyses of the solutions. This file has been reviewed by Tpr. Ken Denton and Mr. Rod Gullberg for accuracy and completeness. Where computations regarding simulator solution values have been found to be incorrect, the corrected values have been written in by Mr. Rod Gullberg along with initials and date. The corrected values were then evaluated to ensure that the solution still conformed to those standards established by the State Toxicologist.

Where computation values changed for a specific batch number, the analysts employed by the State Toxicology Laboratory were asked to review the revisions, ensure the solution complied with the criteria established by the State Toxicologist and then re-sign their affidavit. Their signature will appear on their original affidavit along with a statement regarding their review of the results.

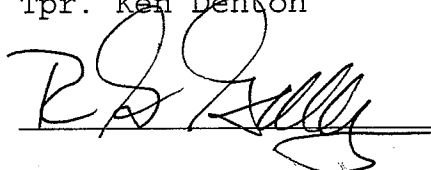
Where a dating error occurred that analyst will have made the correction on the original data form including their initials and date and then re-signed their original affidavit.



10/15/2007

Tpr. Ken Denton

Date



10-15-07

Rod G. Gullberg

Date

Washington State Toxicology Laboratory

Simulator Solution Data Entry Review Form

Reviewer KEN DENTON / ROD GUNBERG Date 10-8-07
Location TOX LAB SEATTLE Batch Number 05024

Form Review Criteria

Preparation date precedes all analysis dates: Okay Not Okay
Data entry corresponds to all chromatograms: Okay Not Okay
All signatures present: Okay Not Okay

Computations:

Avg. solution concentration: Correct Not Correct
Standard deviation: Correct Not Correct
Range: Correct Not Correct
Precision: Correct Not Correct
Equivalent vapor concent.: Correct Not Correct
External Control Information
(lot # and future date): Correct Not Correct

Complies with accuracy and precision requirements established by the State Toxicologist: Yes No

Corrections Necessary:

Comments:

Reviewer Signature:  Date: 10-8-07
Reviewer Signature: _____ Date: _____

WASHINGTON STATE TOXICOLOGY LABORATORY
FORENSIC LABORATORY SERVICES BUREAU
 WASHINGTON STATE PATROL
 2203 AIRPORT WAY S, SUITE 360
 SEATTLE, WASHINGTON 98134-2027
 (206) 262-6100 FAX (206) 262-6145

Preparation and certification of **0.04** g/210L **Quality Assurance solution**

Batch number **05024**

Date: 7/6/2005

Preparation: 11.1 mL of absolute ethyl alcohol diluted to 18 Liters with water

Concentration of ethanol (g/100mL) measured by gas chromatography:

	Anal 1	Anal 2	Anal 3	Anal 4	Anal 5	Anal 6	Anal 7	Anal 8	Anal 9	Anal 10	Anal 11	Anal 12
1		0.048	0.047	0.047								
2		0.048	0.047	0.048								
3		0.048	0.047	0.047								
4		0.048	0.047	0.047								
5		0.048	0.047	0.047								
Ctrl		0.099	0.097	0.098								

RA

External Control:

Lot #: A028603 Exp date: 12/07

Target concentration: 0.10 g/100mL

Statistics:

Avg. solution concent.: 0.0474 g/100 mL

SD: 0.00051

Range (3xSD): 0.0459 to 0.0489

Precision CV (%): 1.0834 %

10-11-07

1.0698

Equivalent vapor concent.: 0.0385 g/210L

Analyst	Name	Signature	Date
1	Naziha Nuwayhid, PhD		
2	Mary E Wilson	<i>Mary E Wilson</i>	07/06/2005
3	Kari Gruendell	<i>Kari Gruendell</i>	07/07/2005
4	Estuardo J. Miranda	<i>Estuardo J. Miranda</i>	07/07/0005
5			
6			
7			
8			
9			
10			
11			
12			

Prepared by: Naziha Nuwayhid, PhD according to the approved protocol

July 7, 2005

TO: MEMO TO FILE

FROM: Ann Marie Gordon 
Laboratory Manager
Washington State Toxicology Laboratory

RE: QA Solution 05024

Quality Assurance solution 05024 was prepared by Naziha Nuwayhid, PhD, on July 6, 2005. Dr. Nuwayhid was unavailable to test the batch herself; however, the batch was appropriately certified according to SOP by Kari Gruendell, Estuardo Miranda and Mary Wilson. All criteria was fully acceptable.



STATE OF WASHINGTON
WASHINGTON STATE PATROL

WASHINGTON STATE TOXICOLOGY LABORATORY

2203 Airport Way South, Suite 360•Seattle, Washington 98134-2927•(206) 262-6100•FAX (206) 262-6145

DATAMASTER QUALITY ASSURANCE SOLUTION
CERTIFICATION

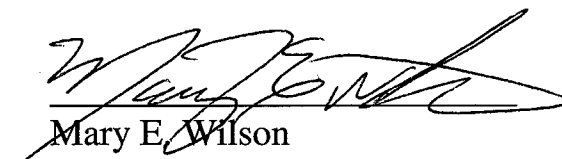
I, Mary E. Wilson, do certify under penalty of perjury as follows:

I am employed by the Washington State Toxicology Laboratory, and a part of my responsibilities includes preparing and testing the alcohol solutions for the DataMaster breath test instrument.

I possess the following qualifications: BS degree in Biology and a minor in Chemistry with three years of experience in toxicology, including two years in the Washington State Toxicology Laboratory.

The quality assurance solution, Lot Number 05024, was prepared in the Washington State Toxicology Laboratory. I examined and tested this solution. The mean concentration of the alcohol was 0.0474 grams per 100ml.

Dated: 7/11/05
Seattle, WA


Mary E. Wilson
Forensic Toxicologist

MEW/la
MEWQA



STATE OF WASHINGTON
WASHINGTON STATE PATROL

WASHINGTON STATE TOXICOLOGY LABORATORY

2203 Airport Way South, Suite 360•Seattle, Washington 98134-2927•(206) 262-6100•FAX (206) 262-6145

DATAMASTER QUALITY ASSURANCE SOLUTION
CERTIFICATION

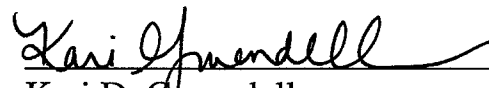
I, Kari D. Gruendell, do certify under penalty of perjury as follows:

I am employed by the Washington State Toxicology Laboratory, and a part of my responsibilities includes preparing and testing the alcohol solutions for the DataMaster breath test instrument.

I possess the following qualifications: BS degree in Biology and a minor in Chemistry and two years of analytical laboratory experience.

The quality assurance solution, Lot Number 05024, was prepared in the Washington State Toxicology Laboratory. I examined and tested this solution. The mean concentration of the alcohol was 0.0474 grams per 100ml.

Dated: 7/11/05
Seattle, WA


Kari D. Gruendell
Forensic Toxicologist

KDG/la
KDGQA



STATE OF WASHINGTON
WASHINGTON STATE PATROL

WASHINGTON STATE TOXICOLOGY LABORATORY

2203 Airport Way South, Suite 360•Seattle, Washington 98134-2927•(206) 262-6100•FAX (206) 262-6145

DATAMASTER QUALITY ASSURANCE SOLUTION
CERTIFICATION

I, Estuardo J. Miranda, do certify under penalty of perjury as follows:

I am employed by the Washington State Toxicology Laboratory, and a part of my responsibilities includes preparing and testing the alcohol solutions for the DataMaster breath test instrument.

I possess the following qualifications: Bachelor of Science in Chemistry, Master of Science in Zoology, seven years experience in biochemical research and seven years experience in Forensic Toxicology.

The quality assurance solution, Lot Number 05024 was prepared in the Washington State Toxicology Laboratory. I examined and tested this solution. The mean concentration of the alcohol was 0.0474 grams per 100ml.

Dated: 7/11/05
Seattle, WA

Estuardo J. Miranda
Forensic Toxicologist

EM/la
EMQA

A review of solution batch records was recently completed. After this review, I checked the file for this solution and reviewed all changes that were made. I found that the solution still conformed to those standards established by the State Toxicologist for the certification of simulator solutions.

10-15-2007

July 7, 2005

TO: MEMO TO FILE

FROM: Ann Marie Gordon 
Laboratory Manager
Washington State Toxicology Laboratory

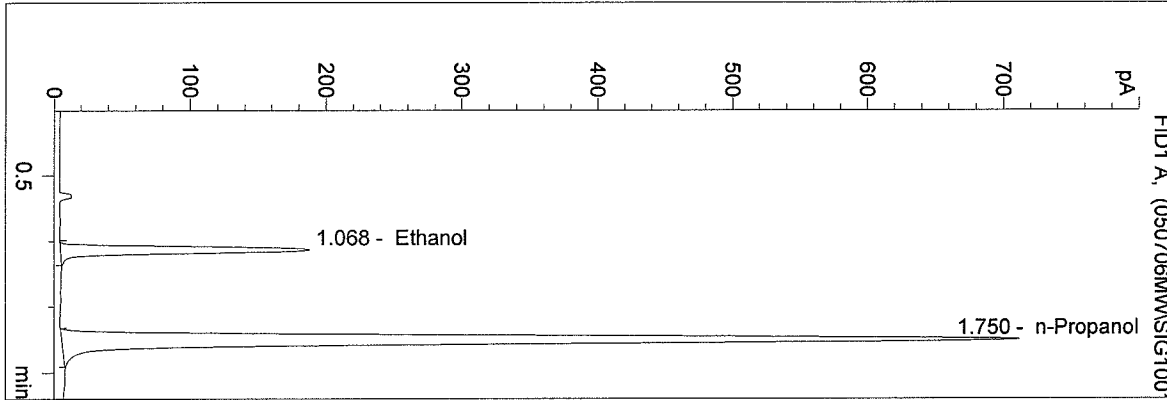
RE: QA Solution 05024

Quality Assurance solution 05024 was prepared by Naziha Nuwayhid, PhD, on July 6, 2005. Dr. Nuwayhid was unavailable to test the batch herself; however, the batch was appropriately certified according to SOP by Kari Gruendell, Estuardo Miranda and Mary Wilson. All criteria was fully acceptable.

C:\HPCHEM\1\METHODS\BLDALCO.M
 7/6/2005 1:05:09 PM
 Instrument 1
 DB BAC 1

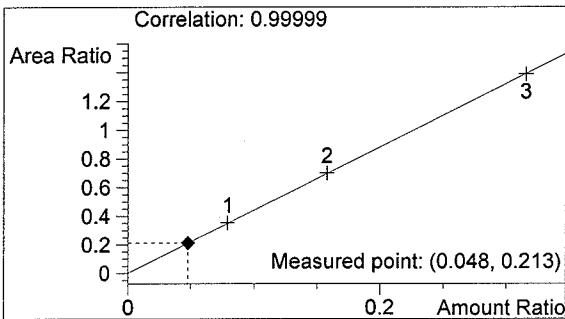
05024 QA
 mary wilson

vial # 10

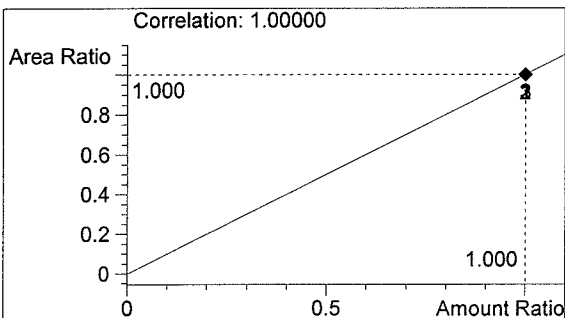


#	Compound	Area	RT
1	Ethanol	627	1.068
2	n-Propanol	2947	1.750

Totals:



Ethanol 0.048 g/100ml



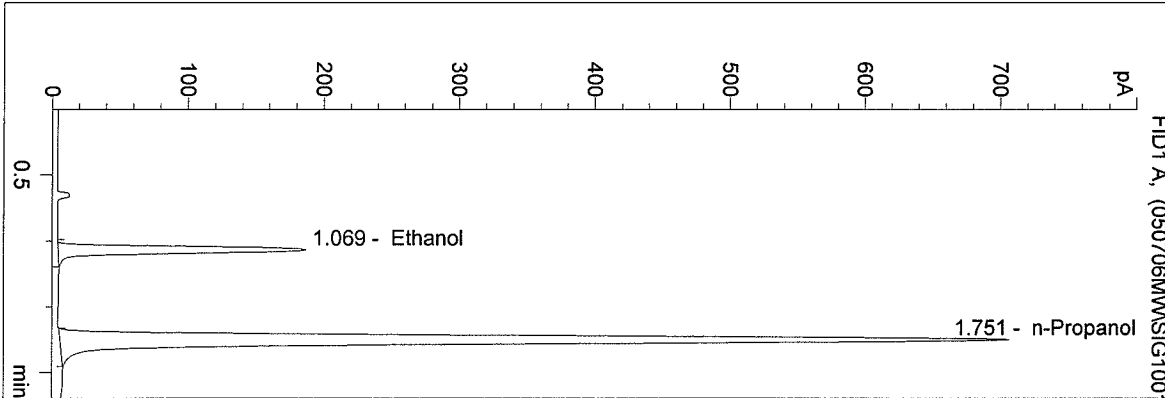
n-Propanol 1.000 g/100ml

WASHINGTON STATE TOXICOLOGY LABORATORY

C:\HPCHEM\1\METHODS\BLDALCO.M
 7/6/2005 1:07:52 PM
 Instrument 1
 DB BAC 1

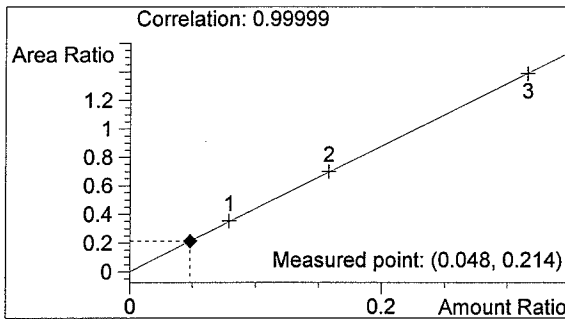
05024 QA
 mary wilson

vial # 11

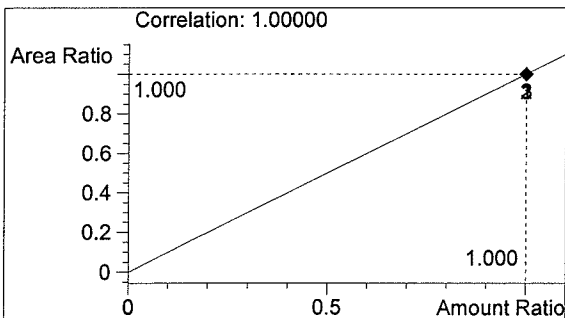


#	Compound	Area	RT
1	Ethanol	628	1.069
2	n-Propanol	2929	1.751

Totals:



Ethanol 0.048 g/100ml

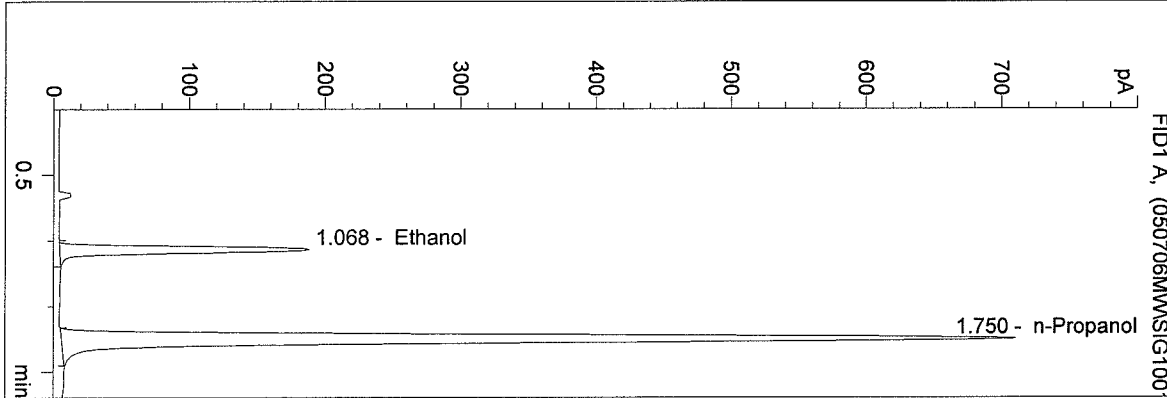


n-Propanol 1.000 g/100ml

C:\HPCHEM\1\METHODS\BLDALCO.M
 7/6/2005 1:10:36 PM
 Instrument 1
 DB BAC 1

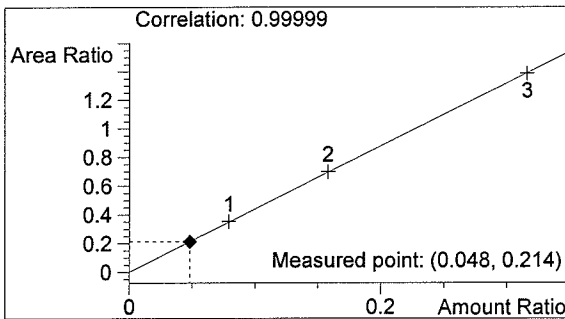
05024 QA
 mary wilson

vial # 12

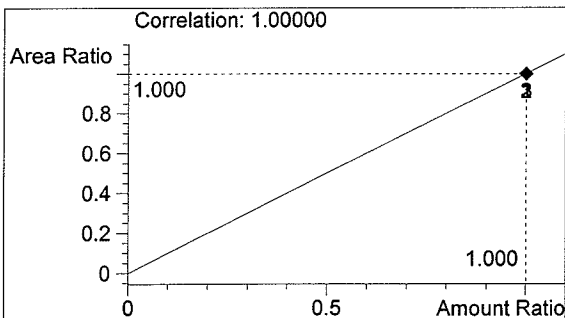


#	Compound	Area	RT
1	Ethanol	631	1.068
2	n-Propanol	2942	1.750

Totals:



Ethanol 0.048 g/100ml



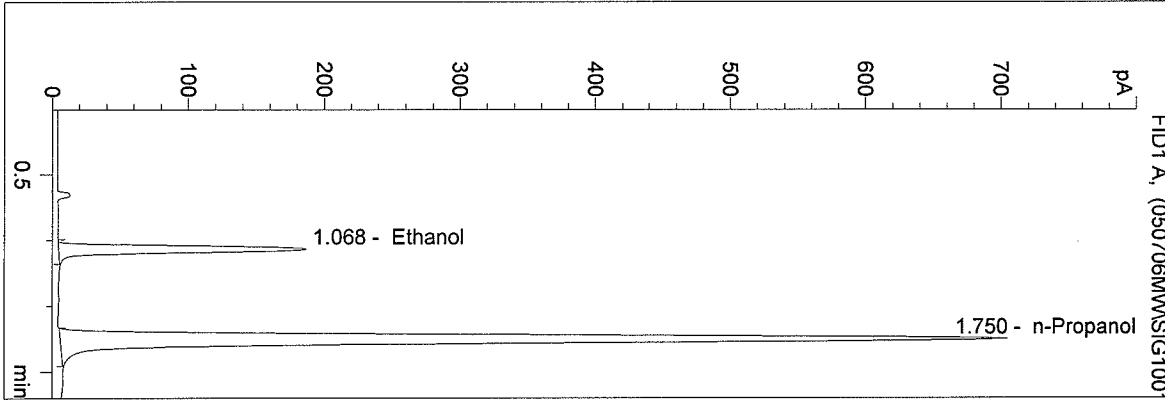
n-Propanol 1.000 g/100ml

WASHINGTON STATE TOXICOLOGY LABORATORY

C:\HPCHEM\1\METHODS\BLDALCO.M
 7/6/2005 1:14:02 PM
 Instrument 1
 DB BAC 1

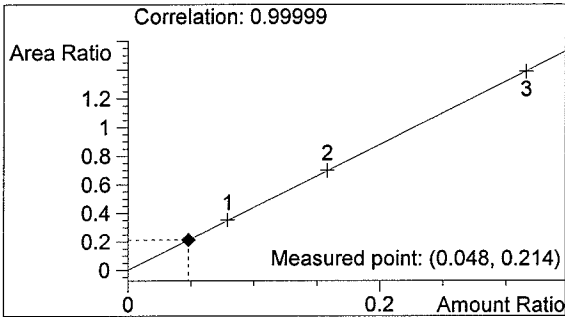
05024 QA
 mary wilson

vial # 13

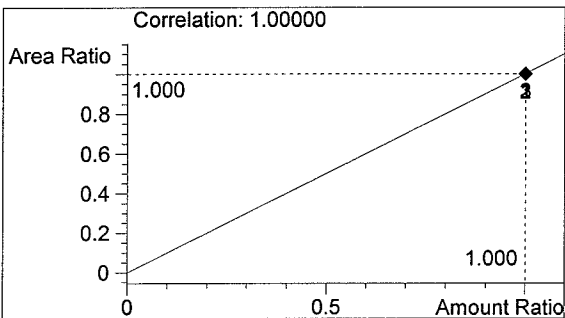


#	Compound	Area	RT
1	Ethanol	624	1.068
2	n-Propanol	2915	1.750

Totals:



Ethanol 0.048 g/100ml

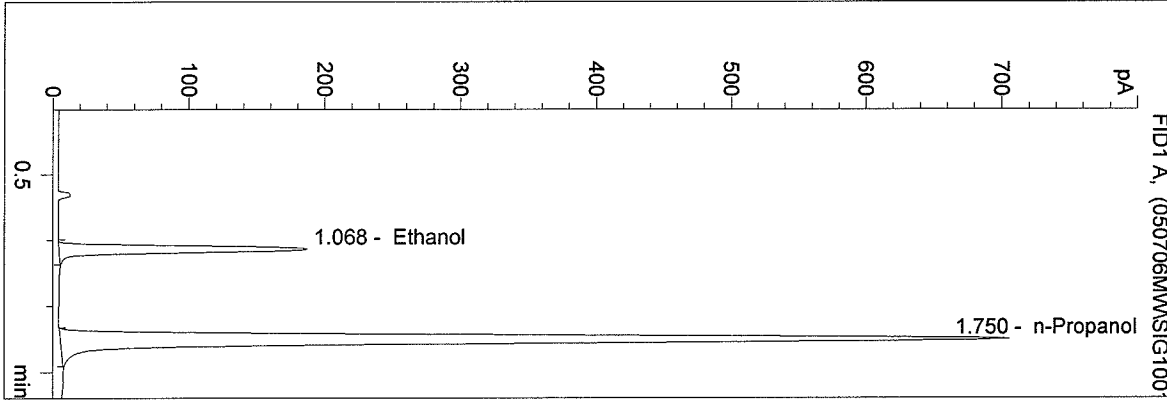


n-Propanol 1.000 g/100ml

C:\HPCHEM\1\METHODS\BLDALCO.M
 7/6/2005 1:16:39 PM
 Instrument 1
 DB BAC 1

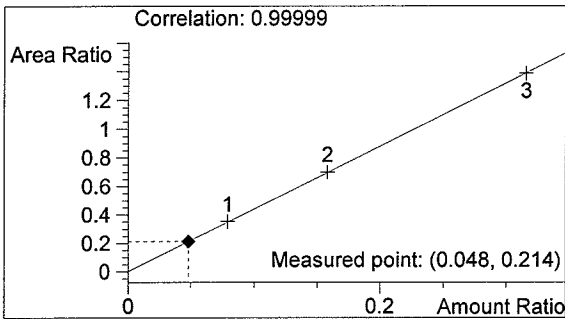
05024 QA
 mary wilson

vial # 14

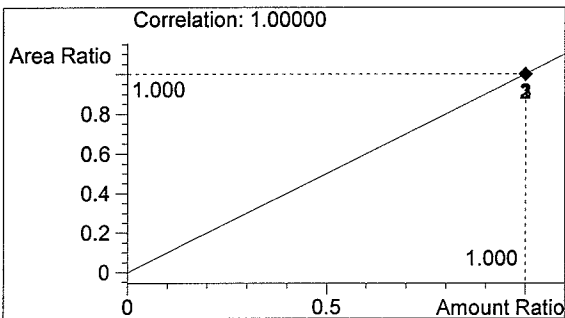


#	Compound	Area	RT
1	Ethanol	625	1.068
2	n-Propanol	2921	1.750

Totals:



Ethanol 0.048 g/100ml



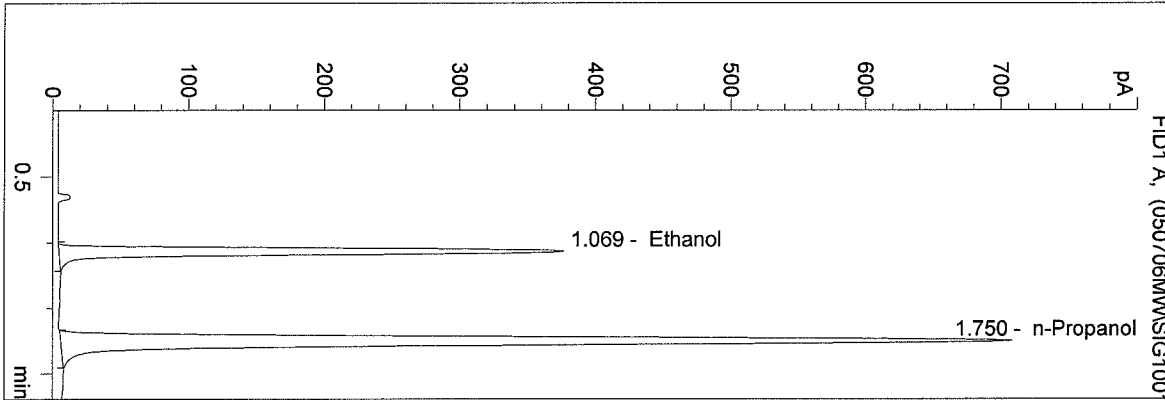
n-Propanol 1.000 g/100ml

WASHINGTON STATE TOXICOLOGY LABORATORY

C:\HPCHEM\1\METHODS\BLDALCO.M
 7/6/2005 1:19:18 PM
 Instrument 1
 DB BAC 1

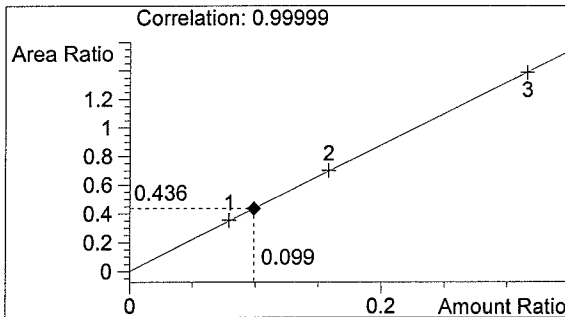
0.10ctlmw
 mary wilson

vial # 15

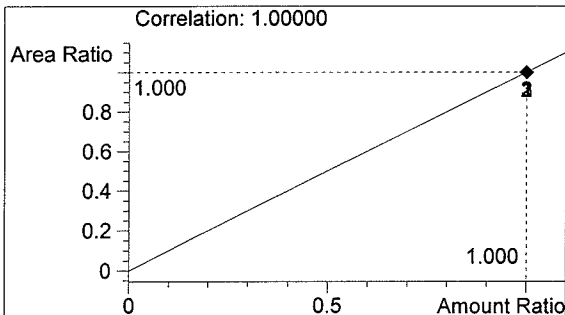


#	Compound	Area	RT
1	Ethanol	1279	1.069
2	n-Propanol	2931	1.750

Totals:



Ethanol 0.099 g/100ml



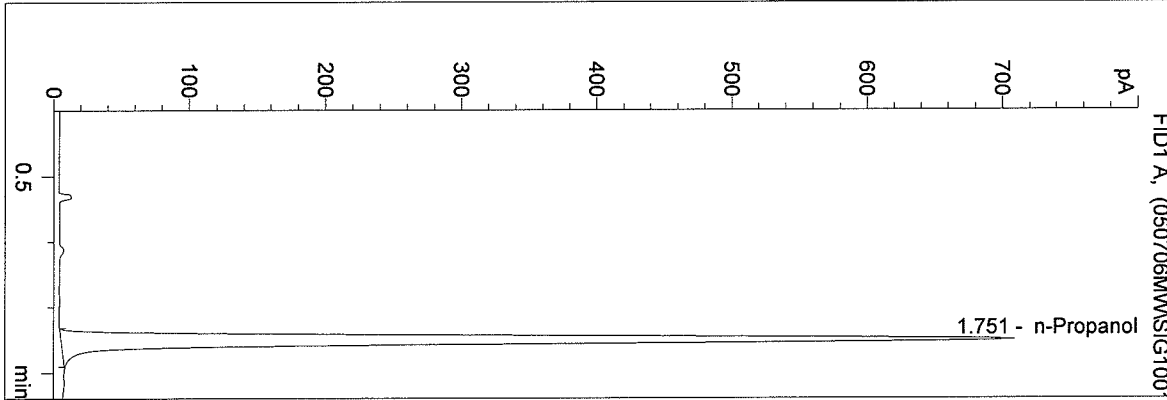
n-Propanol 1.000 g/100ml

WASHINGTON STATE TOXICOLOGY LABORATORY

C:\HPCHEM\1\METHODS\BLDALCO.M
 7/6/2005 1:22:03 PM
 Instrument 1
 DB BAC 1

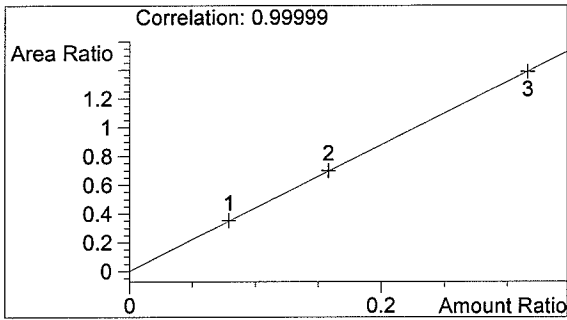
blank
 mary wilson

vial # 16

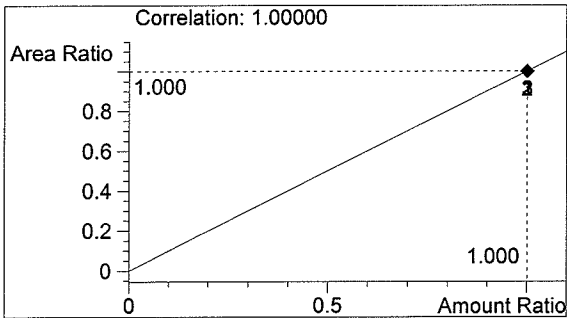


#	Compound	Area	RT
1	Ethanol	0	0.000
2	n-Propanol	2936	1.751

Totals:



Ethanol 0.000 g/100ml



n-Propanol 1.000 g/100ml

Sequence Parameters:

Operator: mary wilson

Data File Naming: Prefix/Counter

Signal 1 Prefix: SIG1

Counter: 0001

Signal 2 Prefix: SIG2

Counter: 0001

Data Directory: C:\HPCHEM\1\DATA\

Data Subdirectory: 050706MW

Part of Methods to run: According to Runtime Checklist

Barcode Reader: not used

Shutdown Cmd/Macro: none

Sequence Comment:

Sequence Table (Front Injector):

Method and Injection Info Part:

Line	Location	SampleName	Method	Inj	SampleType	InjVolume	DataFile
====	=====	=====	=====	===	=====	=====	=====
1	Vial 1	BLANK	BLDALCO3	1	Sample		
2	Vial 2	0.079 CAL	BLDALCO3	1	Calib		
3	Vial 3	0.158 CAL	BLDALCO3	1	Calib		
4	Vial 4	0.316 CAL	BLDALCO3	1	Calib		
5	Vial 5	BLANK	BLDALCO3	1	Sample		
6	Vial 6	0.04 Ctl	BLDALCO3	1	Ctrl Samp		
7	Vial 7	0.10 CONTROL	BLDALCO3	1	Ctrl Samp		
8	Vial 8	0.20 CONTROL	BLDALCO3	1	Ctrl Samp		
9	Vial 9	BLANK	BLDALCO3	1	Sample		
10	Vial 10	05024 QA	BLDALCO3	1	Sample		
11	Vial 11	05024 QA	BLDALCO3	1	Sample		
12	Vial 12	05024 QA	BLDALCO3	1	Sample		
13	Vial 13	05024 QA	BLDALCO3	1	Sample		
14	Vial 14	05024 QA	BLDALCO3	1	Sample		
15	Vial 15	0.10ctlmw	BLDALCO3	1	Ctrl Samp		
16	Vial 16	blank	BLDALCO3	1	Sample		
17	Vial 17	05025 QA	BLDALCO3	1	Sample		
18	Vial 18	05025 QA	BLDALCO3	1	Sample		
19	Vial 19	05025 QA	BLDALCO3	1	Sample		
20	Vial 20	05025 QA	BLDALCO3	1	Sample		
21	Vial 21	05025 QA	BLDALCO3	1	Sample		
22	Vial 22	0.10CTLMW	BLDALCO3	1	Ctrl Samp		
23	Vial 23	blank	BLDALCO3	1	Sample		
24	Vial 24	05026 QA	BLDALCO3	1	Sample		
25	Vial 25	05026 QA	BLDALCO3	1	Sample		
26	Vial 26	05026 QA	BLDALCO3	1	Sample		
27	Vial 27	05026 QA	BLDALCO3	1	Sample		
28	Vial 28	05026 QA	BLDALCO3	1	Sample		
29	Vial 29	0.10CTLMW	BLDALCO3	1	Ctrl Samp		
30	Vial 30	blank	BLDALCO3	1	Sample		

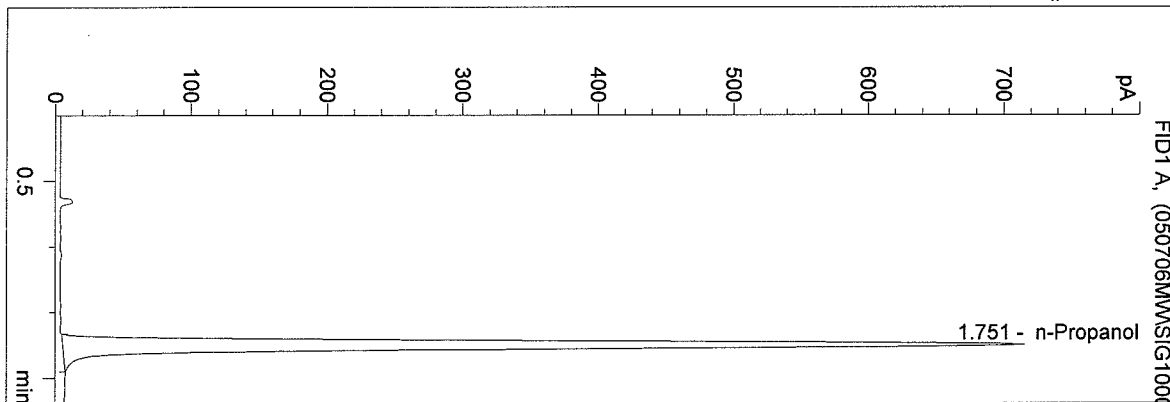
Sequence Table (Back Injector):

No entries - empty table!

C:\HPCHEM\1\METHODS\BLDALCO.M
 7/6/2005 12:39:38 PM
 Instrument 1
 DB BAC 1

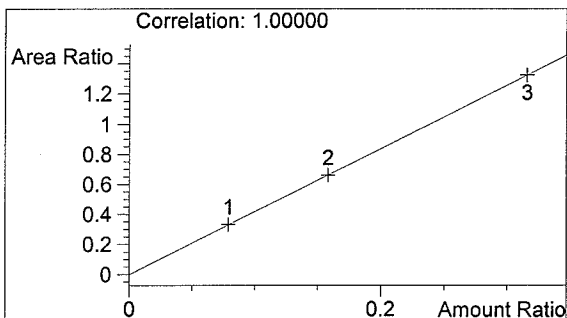
BLANK
 mary wilson

vial # 1

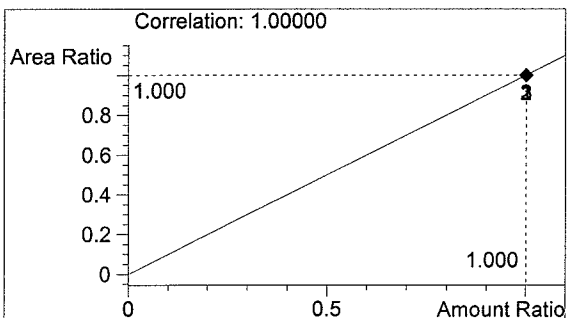


#	Compound	Area	RT
1	Ethanol	0	0.000
2	n-Propanol	2957	1.751

Totals:



Ethanol 0.000 g/100ml

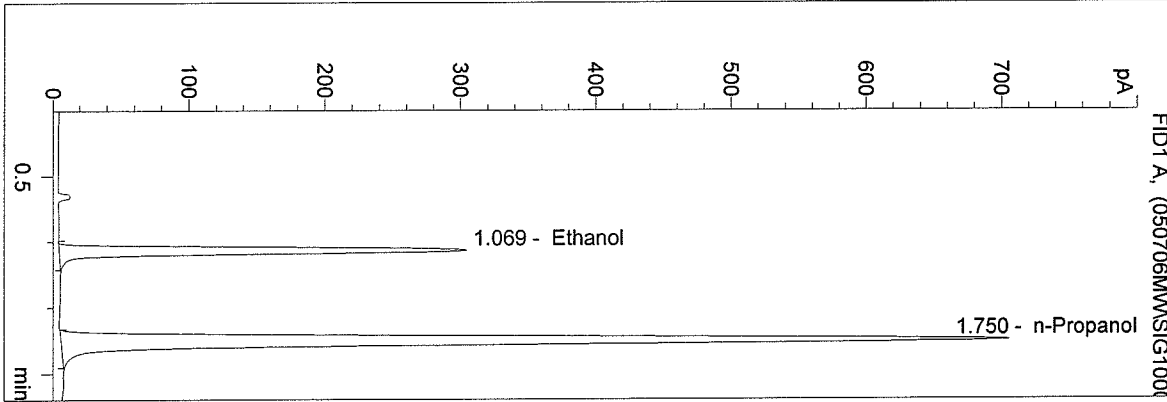


n-Propanol 1.000 g/100ml

C:\HPCHEM\1\METHODS\BLDALCO.M
 7/6/2005 12:42:18 PM
 Instrument 1
 DB BAC 1

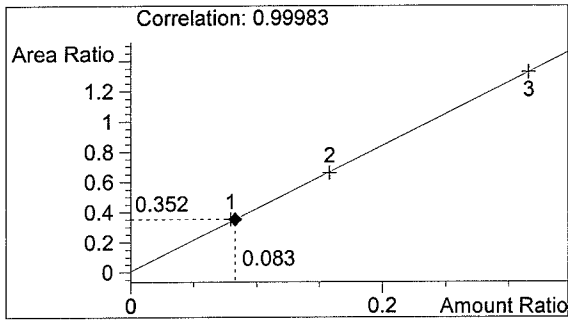
0.079 CAL
 mary wilson

vial # 2

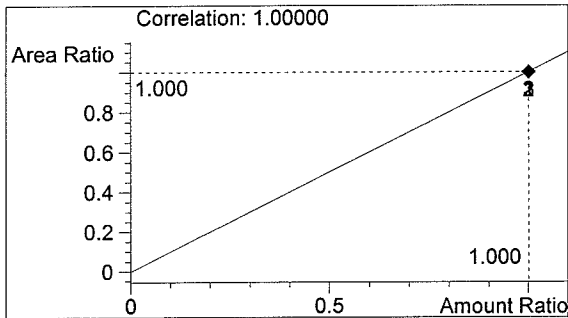


#	Compound	Area	RT
1	Ethanol	1030	1.069
2	n-Propanol	2924	1.750

Totals:



Ethanol 0.083 g/100ml



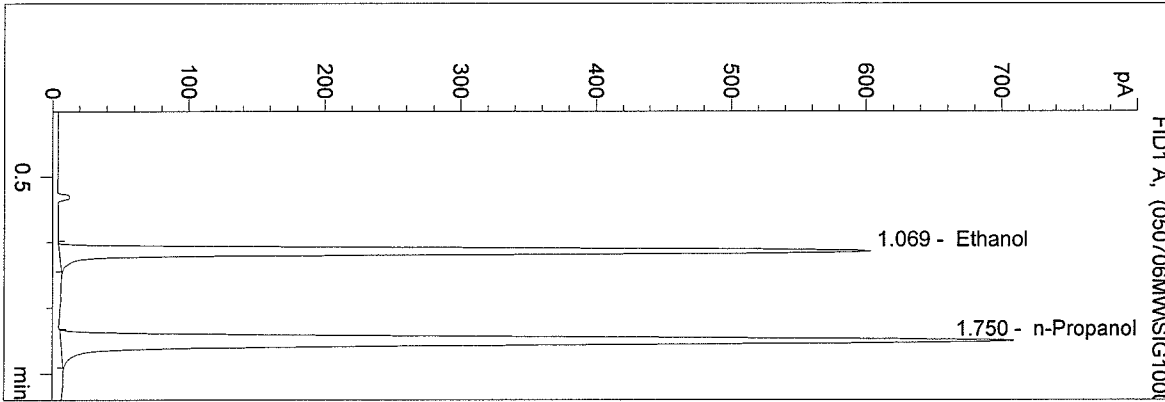
n-Propanol 1.000 g/100ml

WASHINGTON STATE TOXICOLOGY LABORATORY

C:\HPCHEM\1\METHODS\BLDALCO.M
 7/6/2005 12:44:59 PM
 Instrument 1
 DB BAC 1

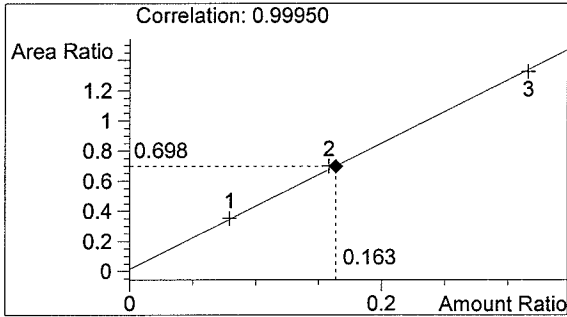
0.158 CAL
 mary wilson

vial # 3

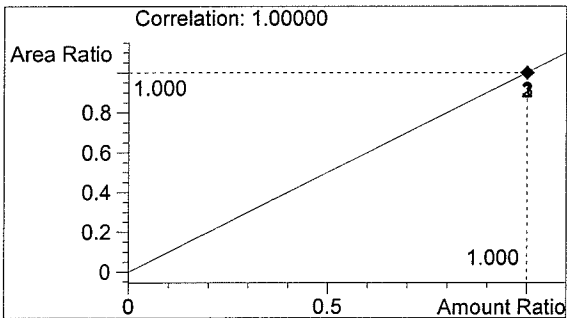


#	Compound	Area	RT
1	Ethanol	2048	1.069
2	n-Propanol	2933	1.750

Totals:



Ethanol 0.163 g/100ml



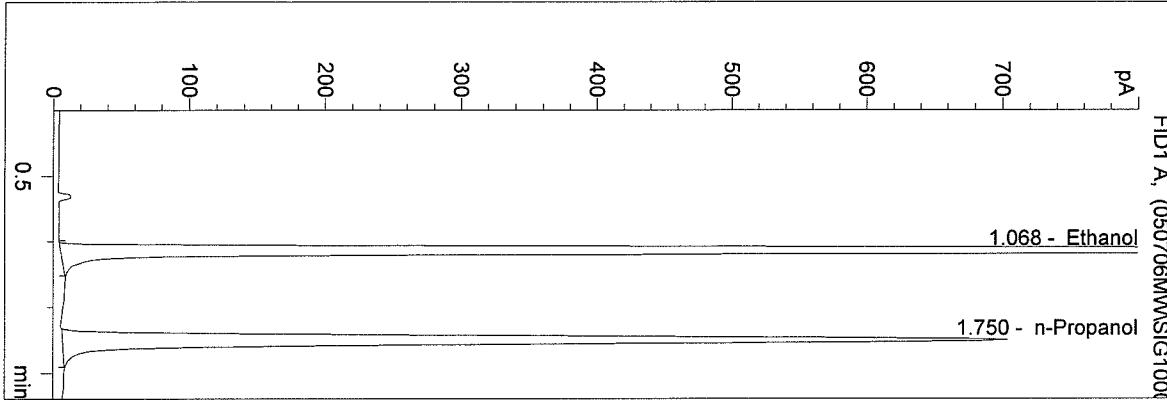
n-Propanol 1.000 g/100ml

WASHINGTON STATE TOXICOLOGY LABORATORY

C:\HPCHEM\1\METHODS\BLDALCO.M
 7/6/2005 12:47:41 PM
 Instrument 1
 DB BAC 1

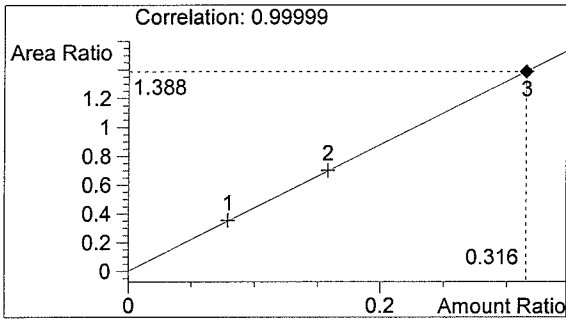
0.316 CAL
 mary wilson

vial # 4

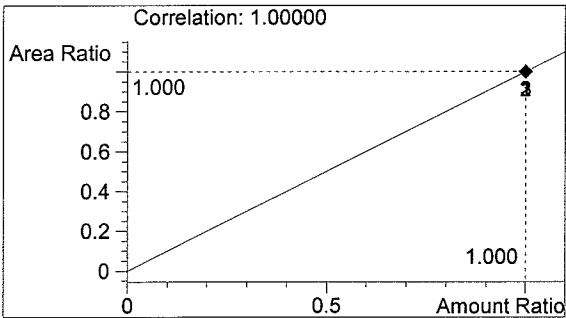


#	Compound	Area	RT
1	Ethanol	4027	1.068
2	n-Propanol	2901	1.750

Totals:



Ethanol 0.316 g/100ml

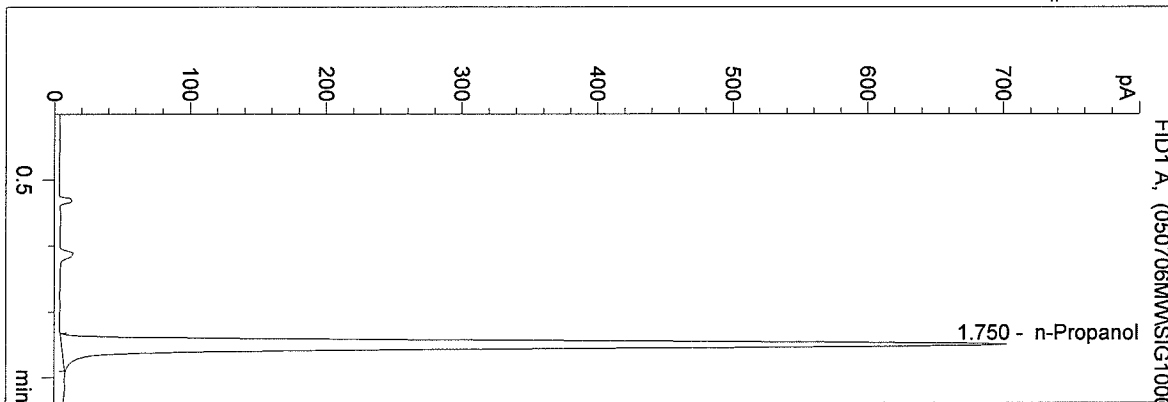


n-Propanol 1.000 g/100ml

C:\HPCHEM\1\METHODS\BLDALCO.M
 7/6/2005 12:51:06 PM
 Instrument 1
 DB BAC 1

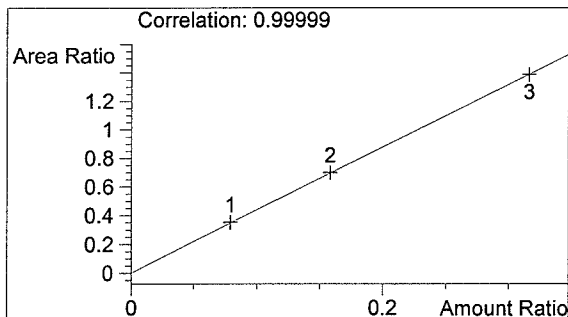
BLANK
 mary wilson

vial # 5

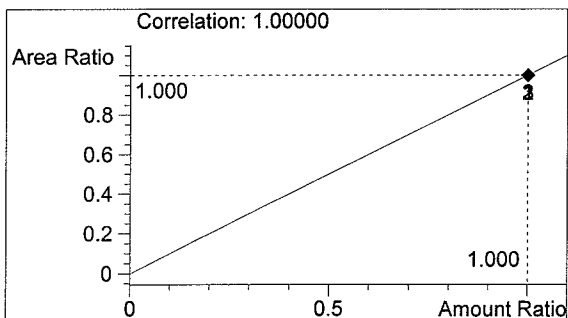


#	Compound	Area	RT
1	Ethanol	0	0.000
2	n-Propanol	2908	1.750

Totals:



Ethanol 0.000 g/100ml



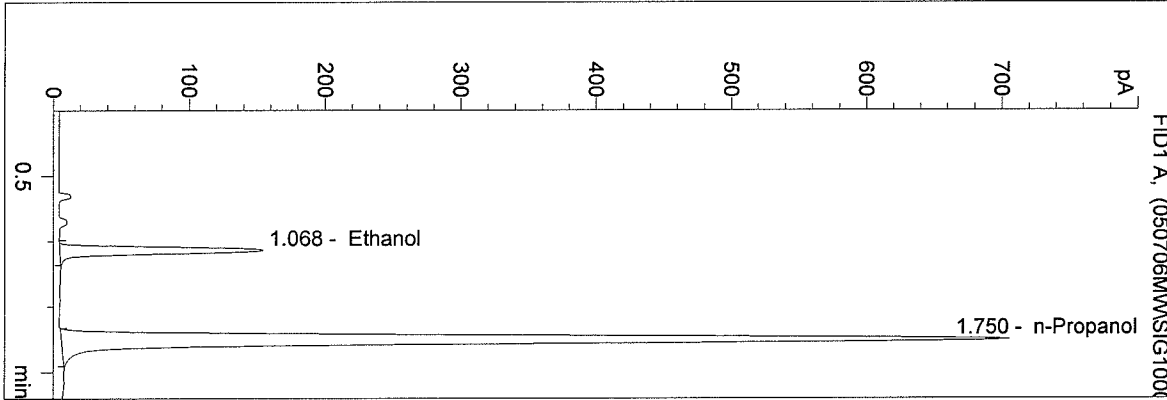
n-Propanol 1.000 g/100ml

WASHINGTON STATE TOXICOLOGY LABORATORY

C:\HPCHEM\1\METHODS\BLDALCO.M
 7/6/2005 12:53:44 PM
 Instrument 1
 DB BAC 1

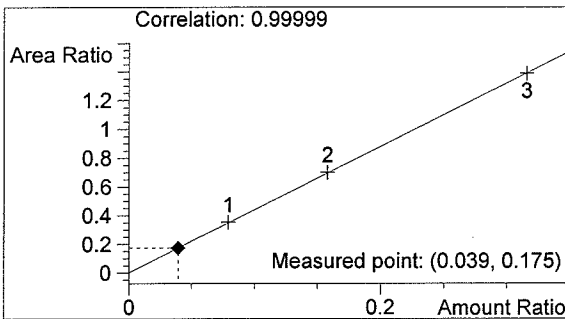
0.04 Ctl
 mary wilson

vial # 6

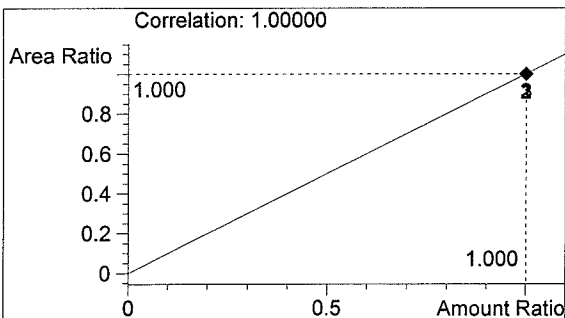


#	Compound	Area	RT
1	Ethanol	513	1.068
2	n-Propanol	2927	1.750

Totals:



Ethanol 0.039 g/100ml



n-Propanol 1.000 g/100ml

WASHINGTON STATE TOXICOLOGY LABORATORY

C:\HPCHEM\1\METHODS\BLDALCO.M

7/6/2005 12:56:26 PM

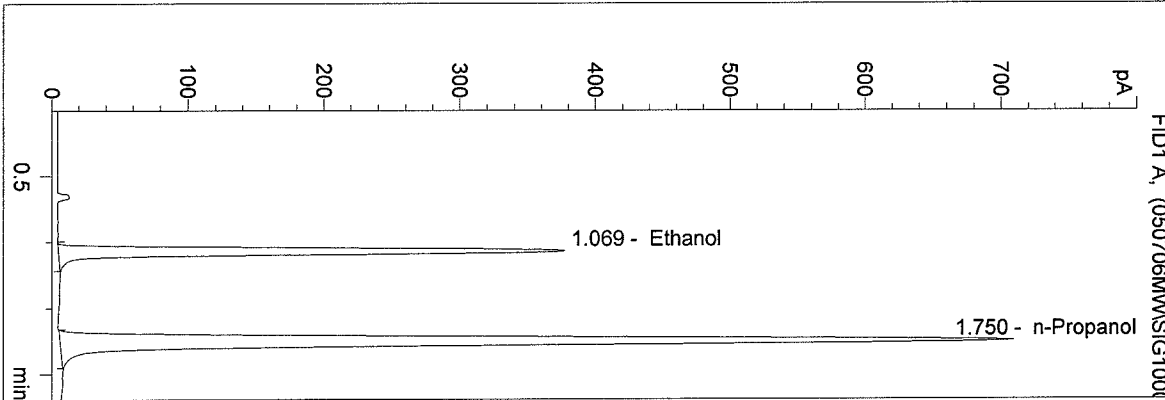
Instrument 1

DB BAC 1

0.10 CONTROL

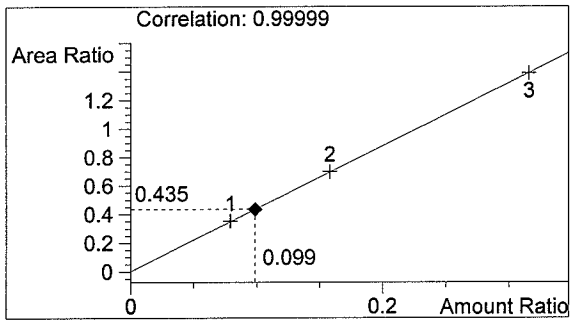
mary wilson

vial # 7

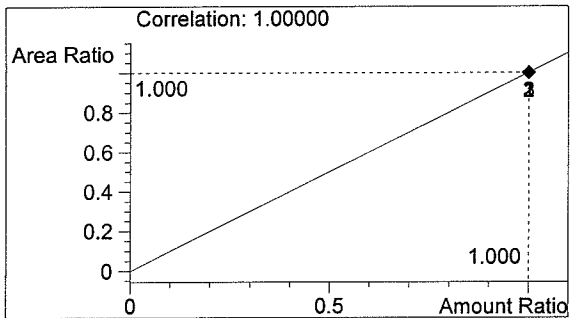


#	Compound	Area	RT
1	Ethanol	1279	1.069
2	n-Propanol	2936	1.750

Totals:



Ethanol 0.099 g/100ml

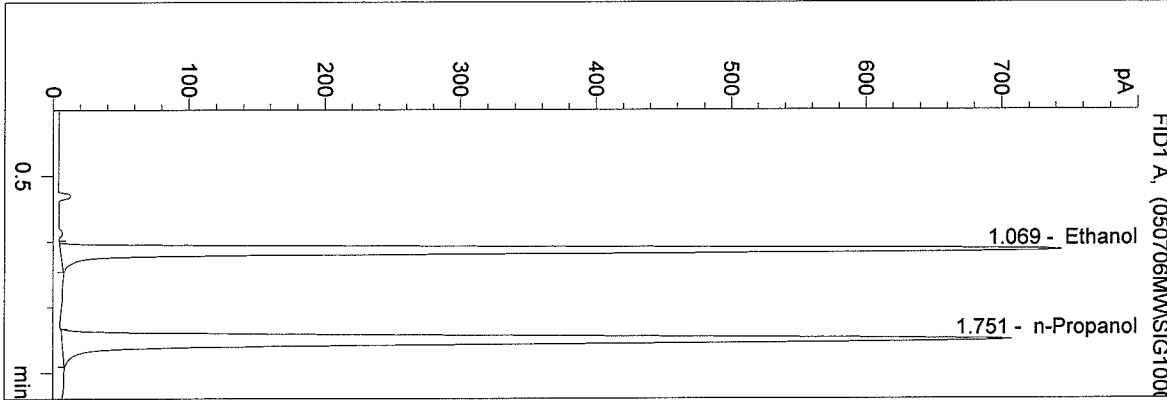


n-Propanol 1.000 g/100ml

C:\HPCHEM\1\METHODS\BLDALCO.M
 7/6/2005 12:59:07 PM
 Instrument 1
 DB BAC 1

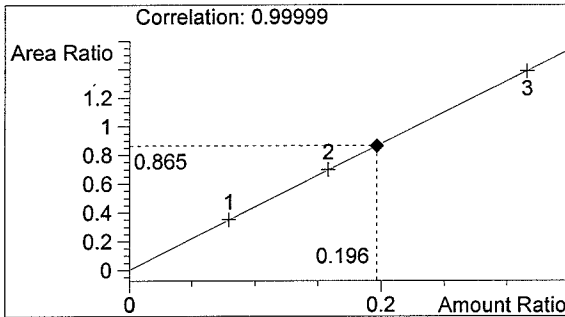
0.20 CONTROL
 mary wilson

vial # 8

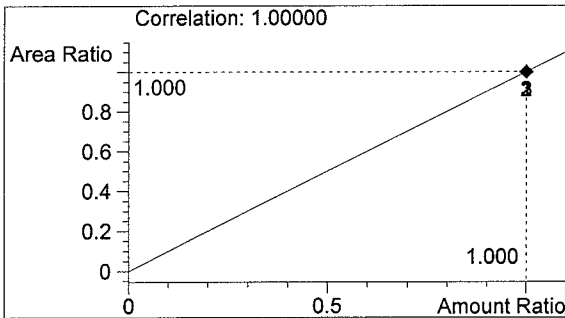


#	Compound	Area	RT
1	Ethanol	2532	1.069
2	n-Propanol	2927	1.751

Totals:



Ethanol 0.196 g/100ml



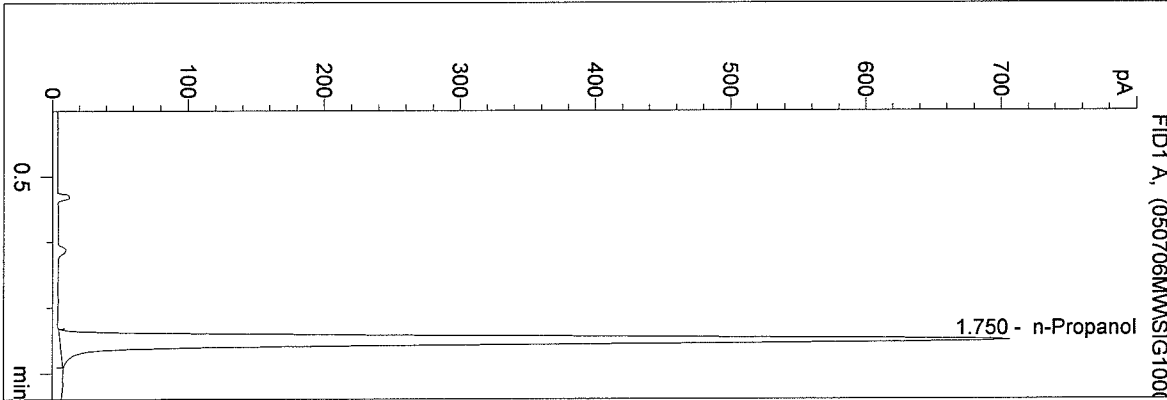
n-Propanol 1.000 g/100ml

WASHINGTON STATE TOXICOLOGY LABORATORY

C:\HPCHEM\1\METHODS\BLDALCO.M
 7/6/2005 1:02:33 PM
 Instrument 1
 DB BAC 1

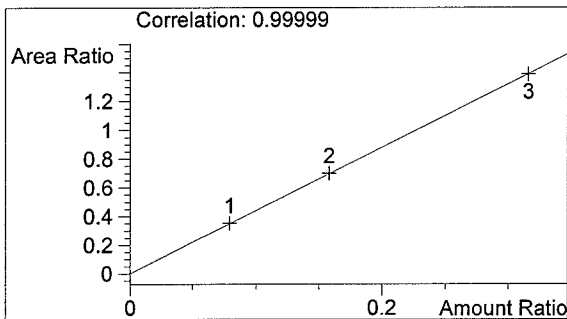
BLANK
 mary wilson

vial # 9

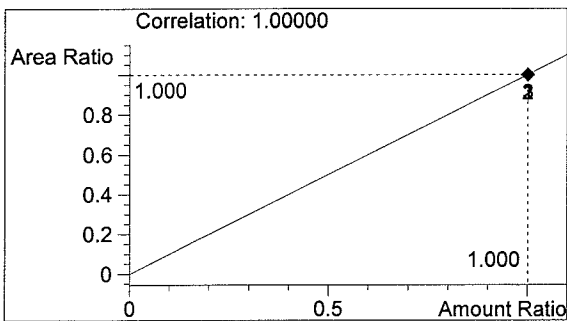


#	Compound	Area	RT
1	Ethanol	0	0.000
2	n-Propanol	2931	1.750

Totals:



Ethanol 0.000 g/100ml

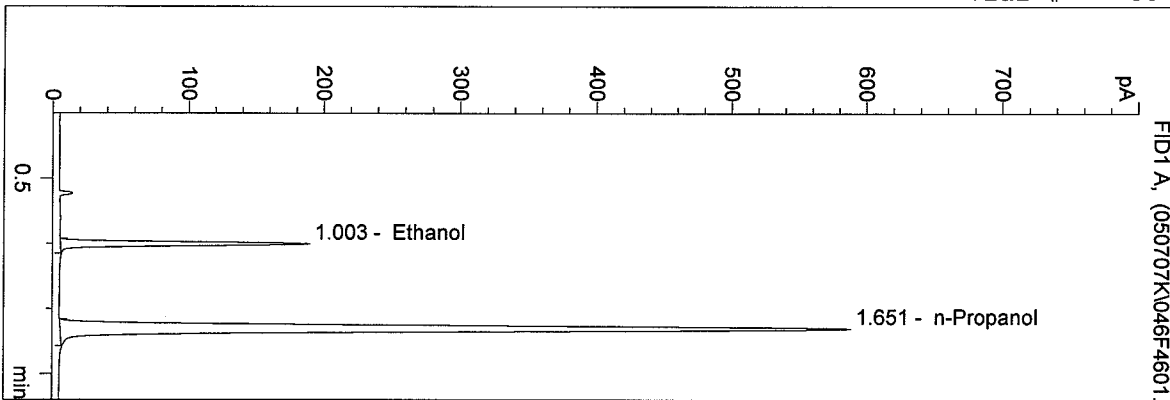


n-Propanol 1.000 g/100ml

D:\HPCHEM\1\METHODS\BLDALCO.M
 7/7/2005 1:28:49 PM
 Instrument 4
 DB-ALC1

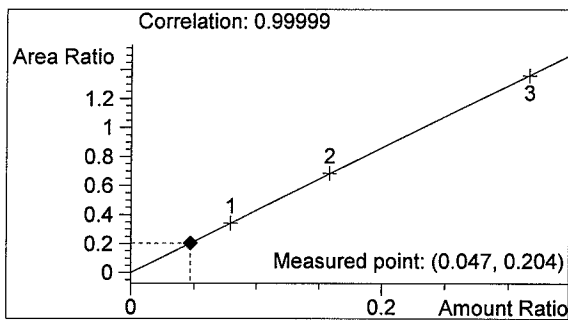
QA 05024 KG #1
 Kari Gruendell

vial # 46

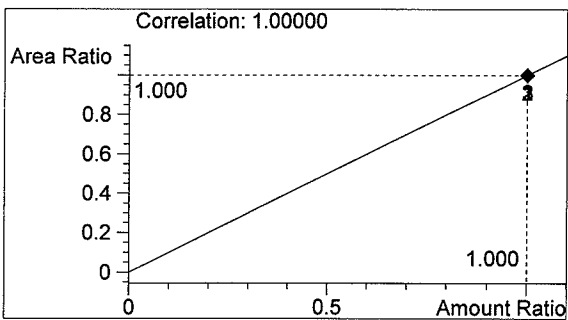


#	Compound	Area	RT
1	Ethanol	375	1.003
2	n-Propanol	1839	1.651

Totals:



Ethanol 0.047 g/100ml

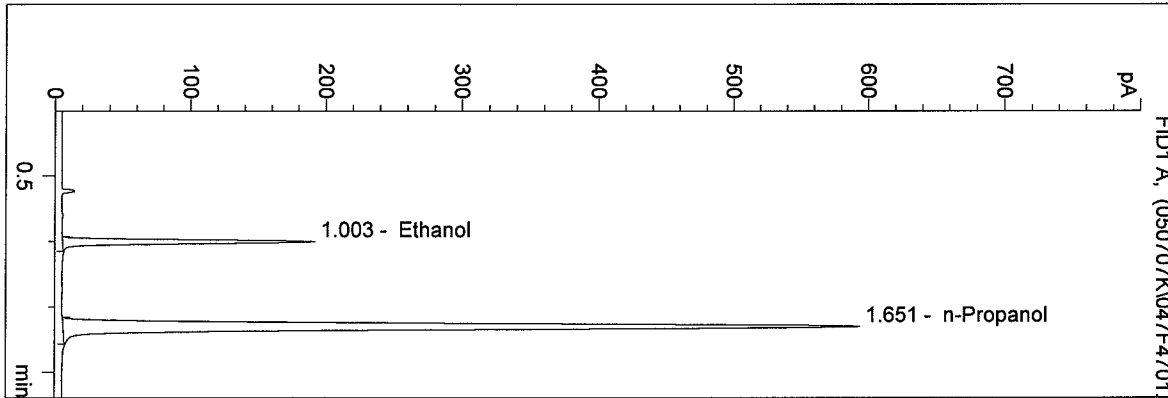


n-Propanol 1.000 g/100ml

D:\HPCHEM\1\METHODS\BLDALCO.M
 7/7/2005 1:32:00 PM
 Instrument 4
 DB-ALC1

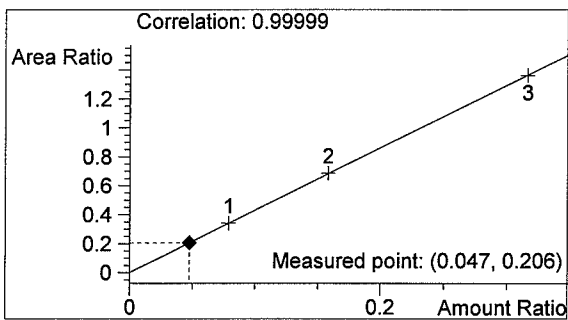
QA 05024 KG #2
 Kari Gruendell

vial # 47

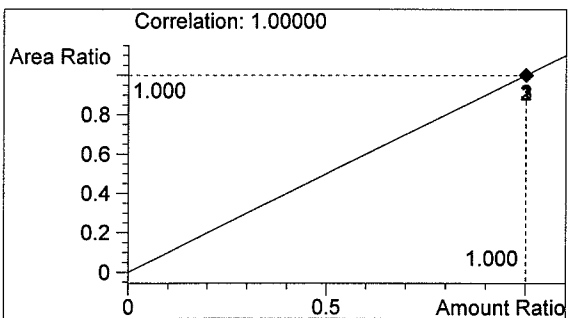


#	Compound	Area	RT
1	Ethanol	381	1.003
2	n-Propanol	1854	1.651

Totals:



Ethanol 0.047 g/100ml

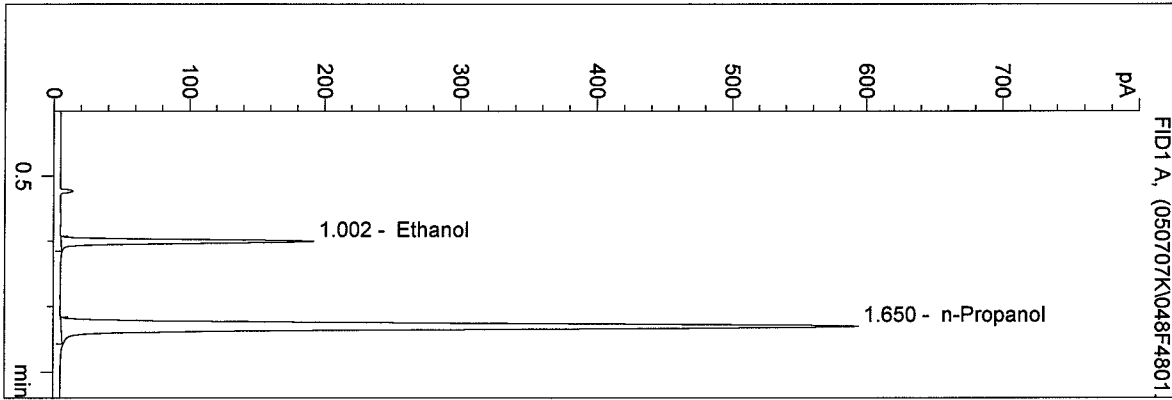


n-Propanol 1.000 g/100ml

D:\HPCHEM\1\METHODS\BLDALCO.M
 7/7/2005 1:35:20 PM
 Instrument 4
 DB-ALC1

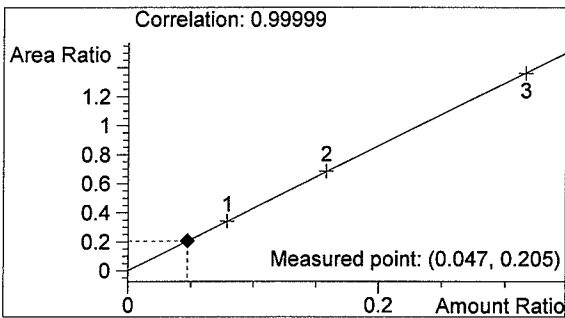
QA 05024 KG #3
 Kari Gruendell

vial # 48

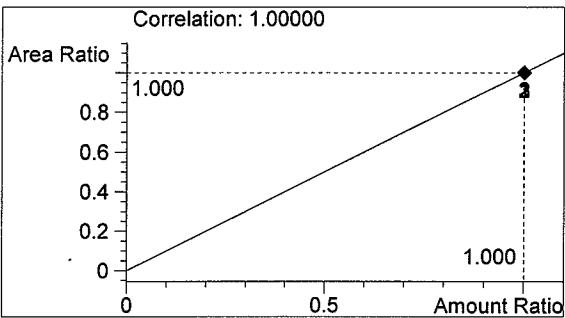


#	Compound	Area	RT
1	Ethanol	380	1.002
2	n-Propanol	1853	1.650

Totals:



Ethanol 0.047 g/100ml

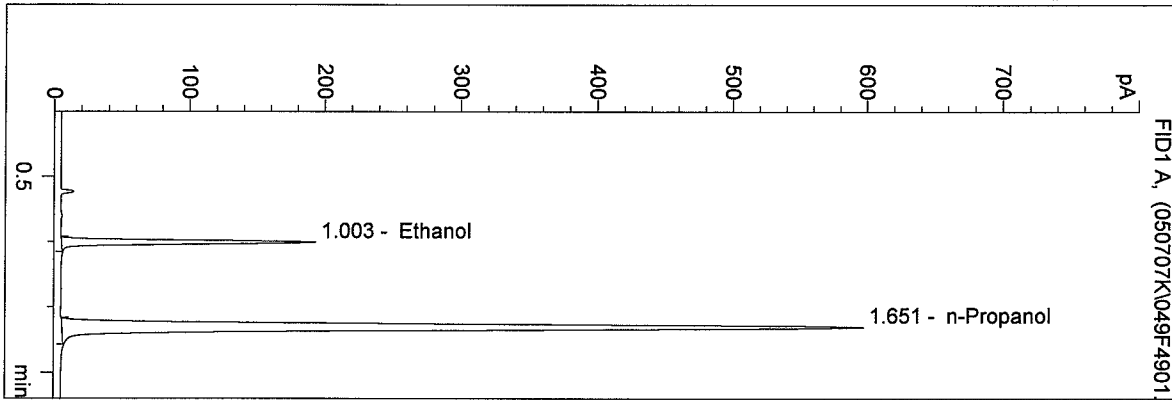


n-Propanol 1.000 g/100ml

D:\HPCHEM\1\METHODS\BLDALCO.M
 7/7/2005 1:38:39 PM
 Instrument 4
 DB-ALC1

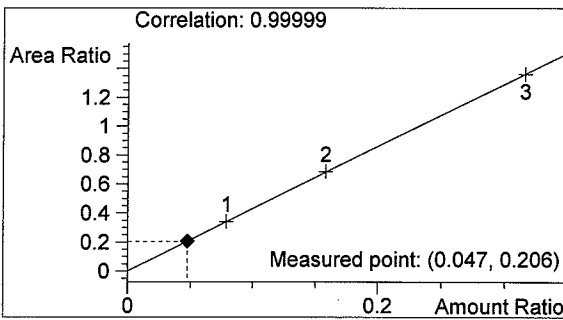
QA 05024 KG #4
 Kari Gruendell

vial # 49

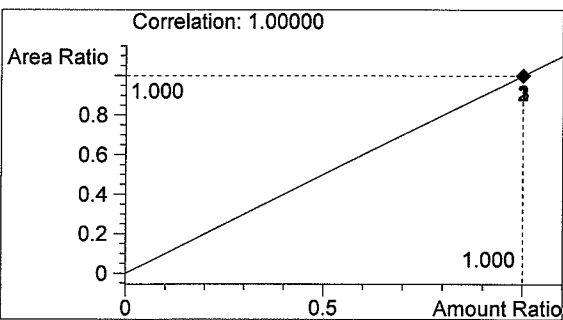


#	Compound	Area	RT
1	Ethanol	384	1.003
2	n-Propanol	1867	1.651

Totals:



Ethanol 0.047 g/100ml

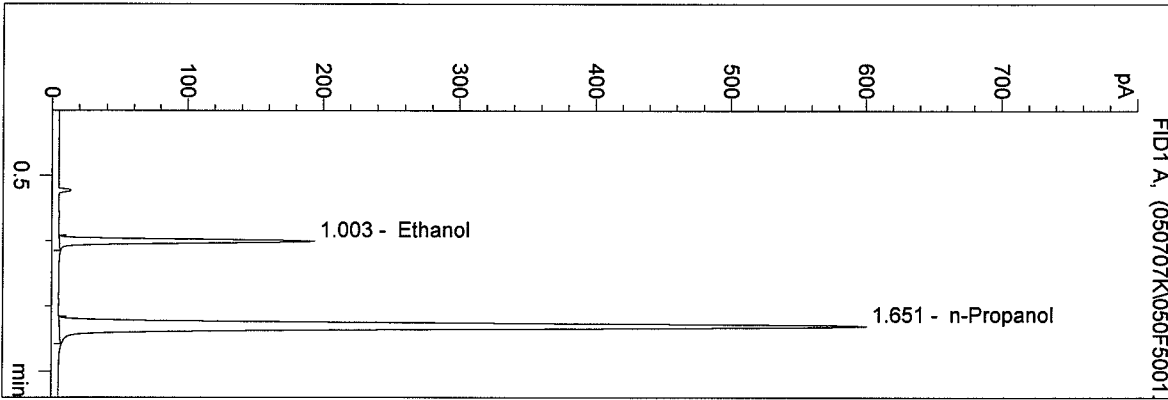


n-Propanol 1.000 g/100ml

D:\HPCHEM\1\METHODS\BLDALCO.M
 7/7/2005 1:41:57 PM
 Instrument 4
 DB-ALC1

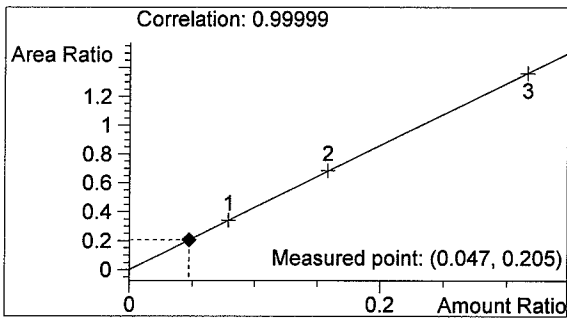
QA 05024 KG #5
 Kari Gruendell

vial # 50

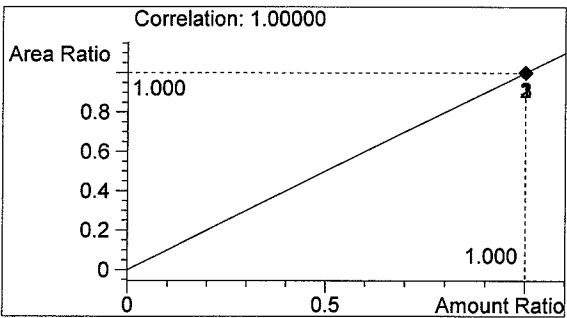


#	Compound	Area	RT
1	Ethanol	385	1.003
2	n-Propanol	1877	1.651

Totals:



Ethanol 0.047 g/100ml

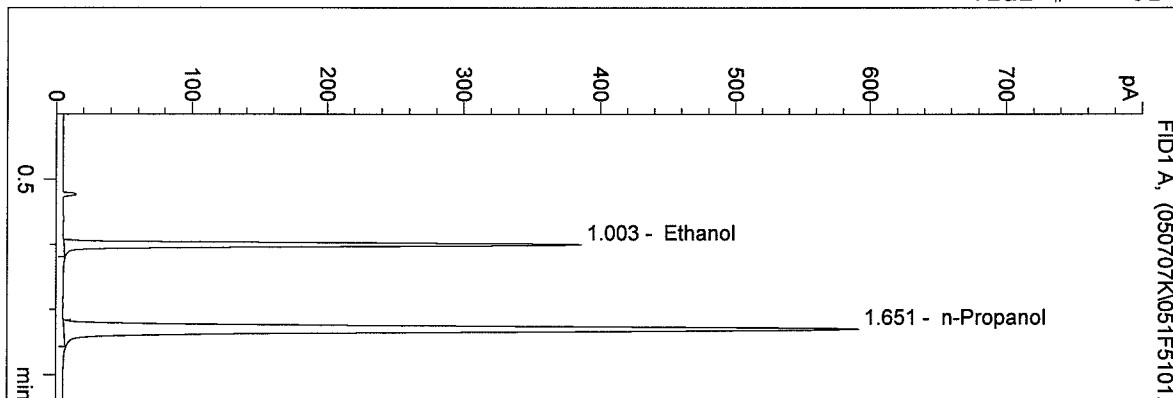


n-Propanol 1.000 g/100ml

D:\HPCHEM\1\METHODS\BLDALCO.M
 7/7/2005 1:45:14 PM
 Instrument 4
 DB-ALC1

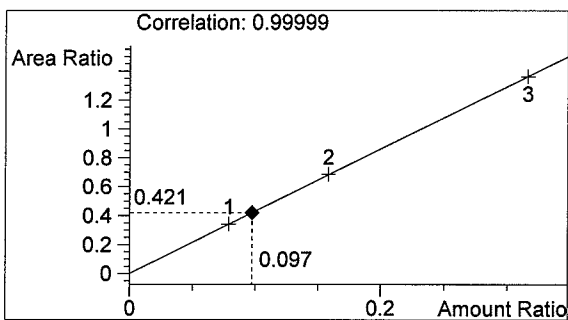
0.10 CONTROL KG
 Kari Gruendell

vial # 51

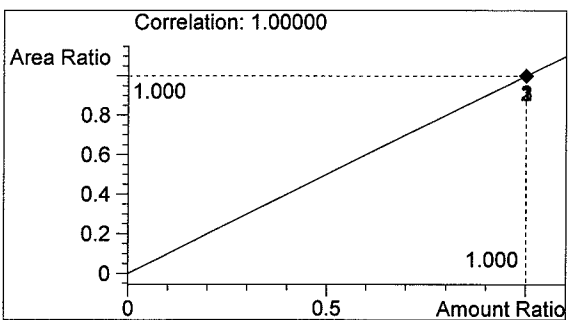


#	Compound	Area	RT
1	Ethanol	777	1.003
2	n-Propanol	1846	1.651

Totals:



Ethanol 0.097 g/100ml

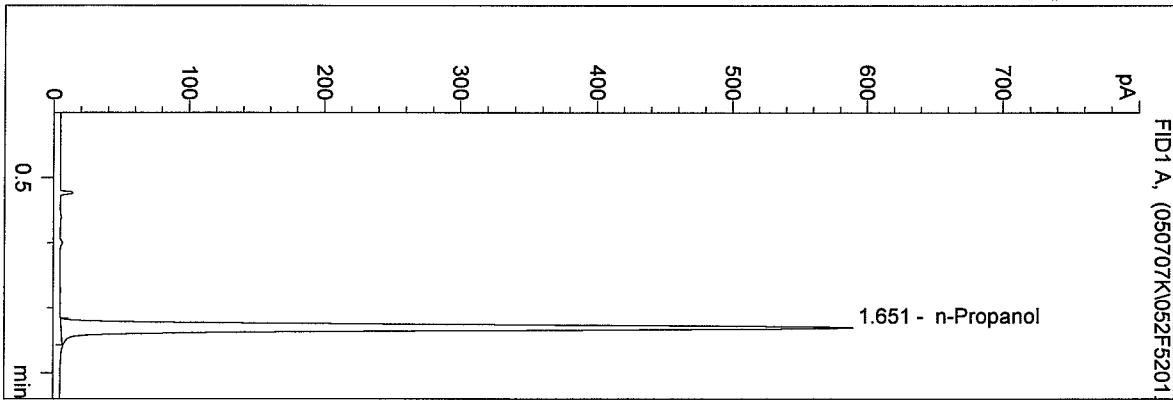


n-Propanol 1.000 g/100ml

D:\HPCHEM\1\METHODS\BLDALCO.M
 7/7/2005 1:48:28 PM
 Instrument 4
 DB-ALC1

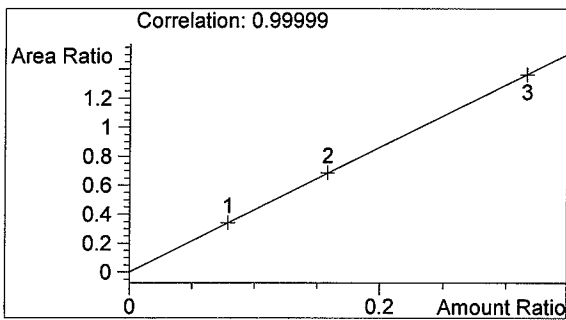
BLANK
 Kari Gruendell

vial # 52

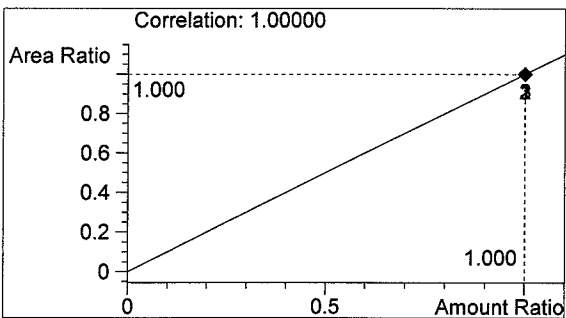


#	Compound	Area	RT
1	Ethanol	0	0.000
2	n-Propanol	1839	1.651

Totals:



Ethanol 0.000 g/100ml

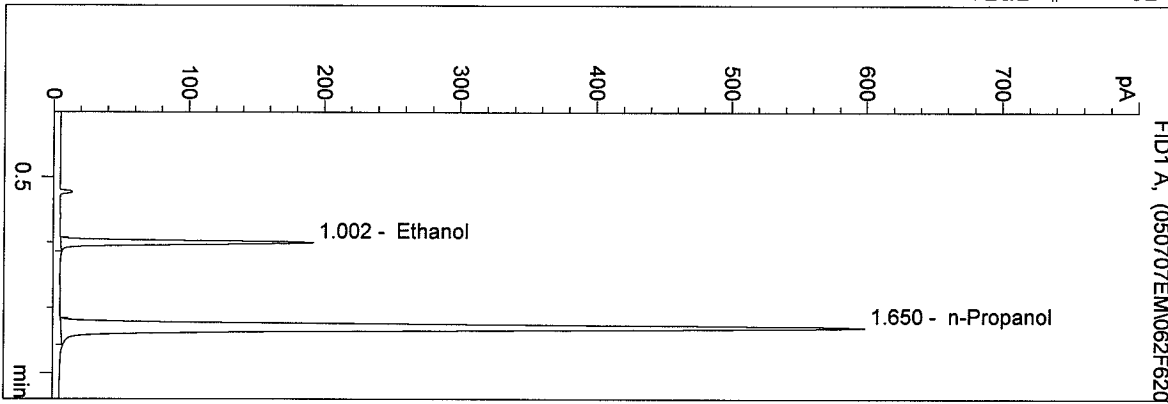


n-Propanol 1.000 g/100ml

D:\HPCHEM\1\METHODS\BLDALCO.M
 7/7/2005 8:48:15 PM
 Instrument 4
 DB-ALC1

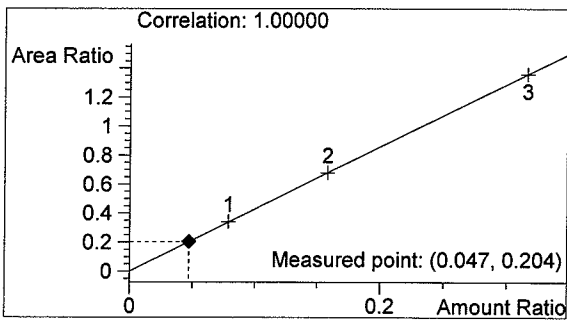
QA Sol 05024-1
 Estuardo J. Miranda

vial # 62

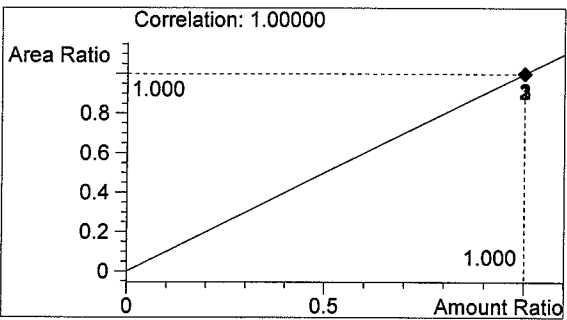


#	Compound	Area	RT
1	Ethanol	383	1.002
2	n-Propanol	1873	1.650

Totals:



Ethanol 0.047 g/100ml

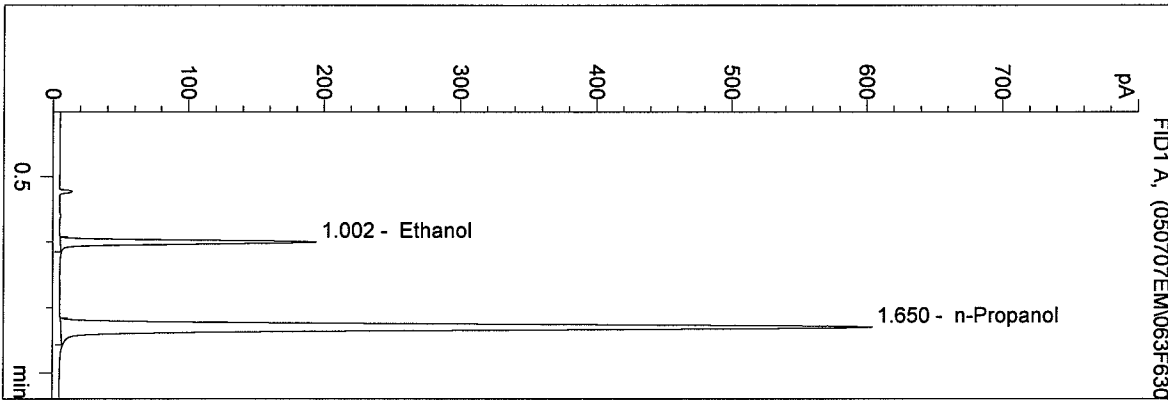


n-Propanol 1.000 g/100ml

D:\HPCHEM\1\METHODS\BLDALCO.M
 7/7/2005 8:51:31 PM
 Instrument 4
 DB-ALC1

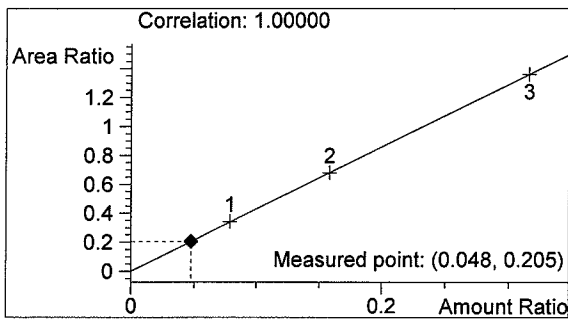
QA Sol 05024--2
 Estuardo J. Miranda

vial # 63

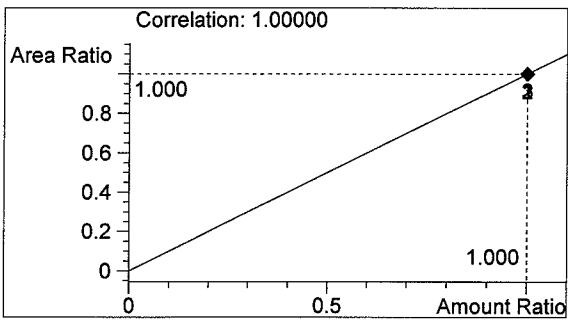


#	Compound	Area	RT
1	Ethanol	387	1.002
2	n-Propanol	1887	1.650

Totals:



Ethanol 0.048 g/100ml

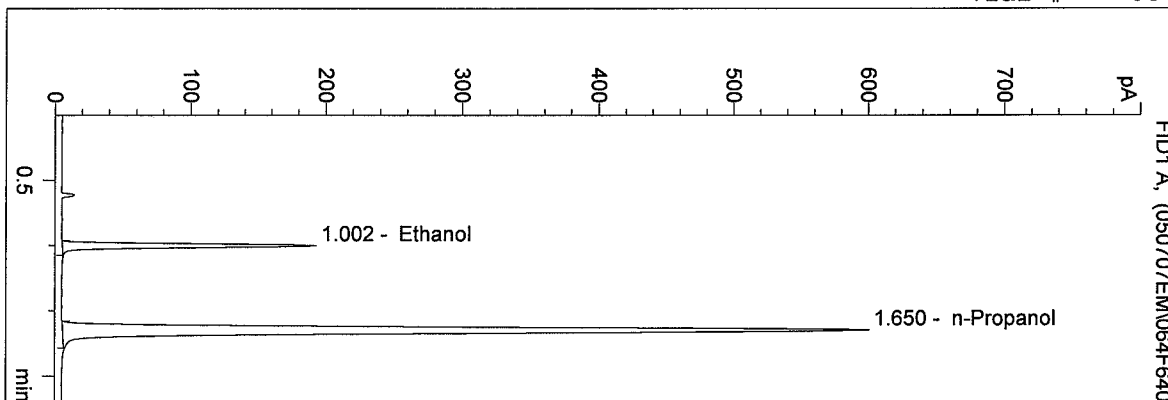


n-Propanol 1.000 g/100ml

D:\HPCHEM\1\METHODS\BLDALCO.M
 7/7/2005 8:54:47 PM
 Instrument 4
 DB-ALC1

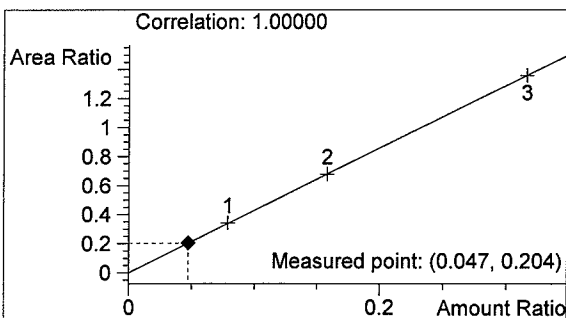
QA Sol 05024-3
 Estuardo J. Miranda

vial # 64

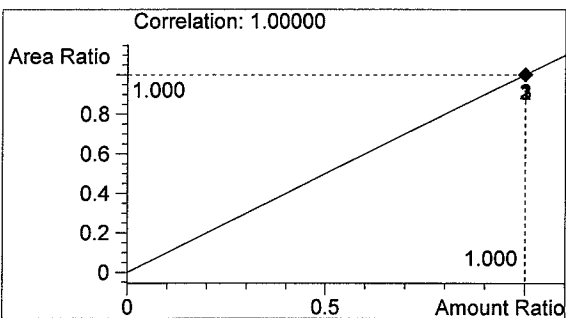


#	Compound	Area	RT
1	Ethanol	383	1.002
2	n-Propanol	1876	1.650

Totals:



Ethanol 0.047 g/100ml

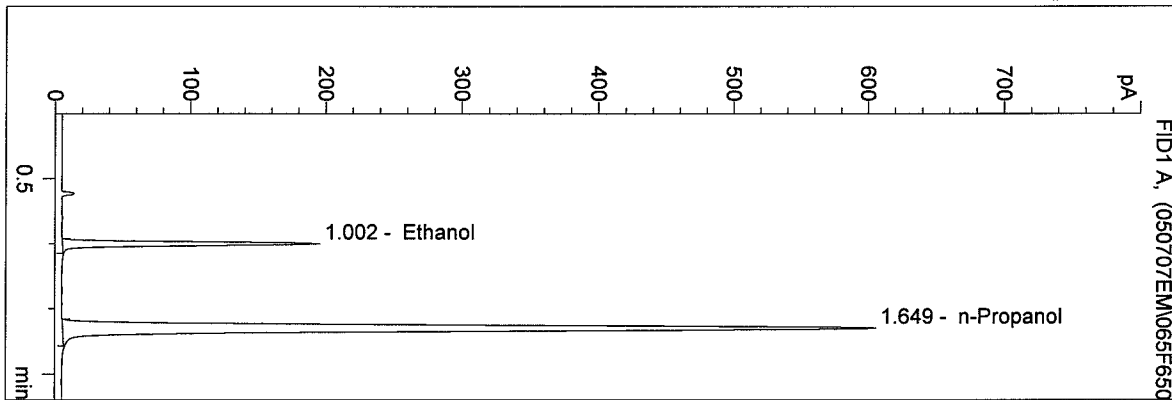


n-Propanol 1.000 g/100ml

D:\HPCHEM\1\METHODS\BLDALCO.M
 7/7/2005 8:57:59 PM
 Instrument 4
 DB-ALC1

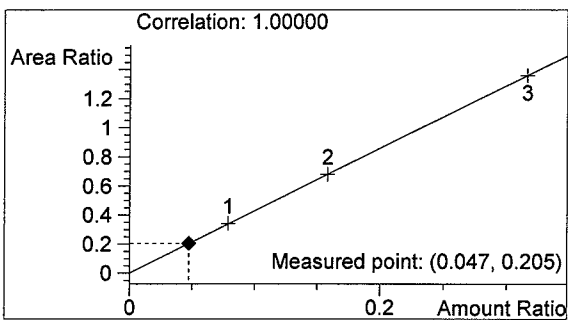
QA Sol 05024-4
 Estuardo J. Miranda

vial # 65

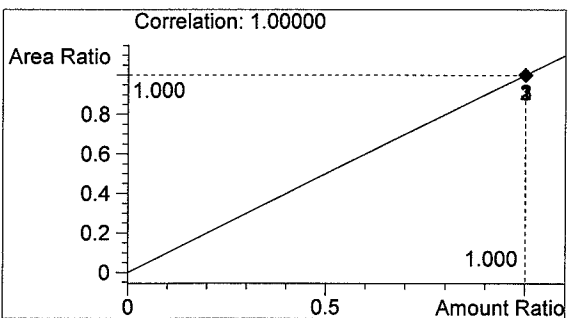


#	Compound	Area	RT
1	Ethanol	388	1.002
2	n-Propanol	1894	1.649

Totals:



Ethanol 0.047 g/100ml

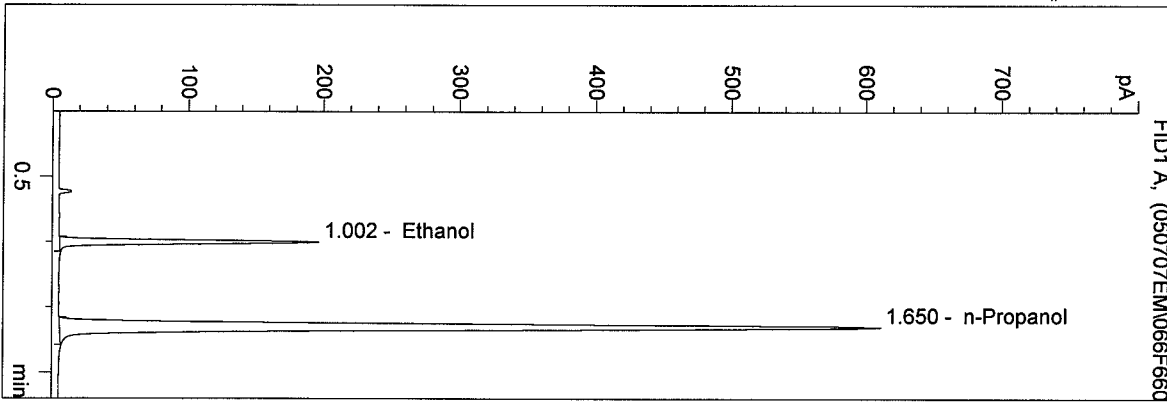


n-Propanol 1.000 g/100ml

D:\HPCHEM\1\METHODS\BLDALCO.M
 7/7/2005 9:01:10 PM
 Instrument 4
 DB-ALC1

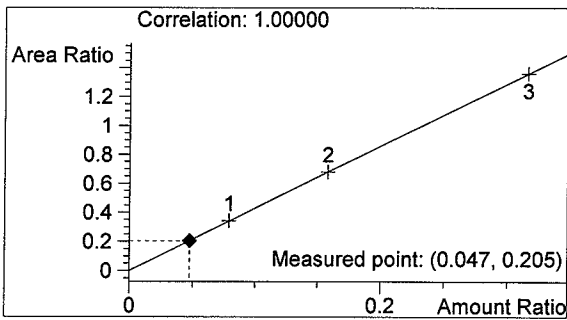
QA Sol 05024-5
 Estuardo J. Miranda

vial # 66

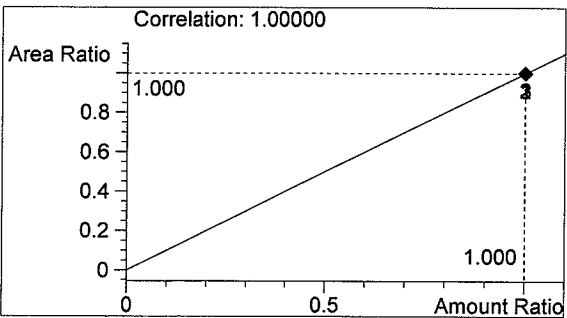


#	Compound	Area	RT
1	Ethanol	391	1.002
2	n-Propanol	1910	1.650

Totals:



Ethanol 0.047 g/100ml

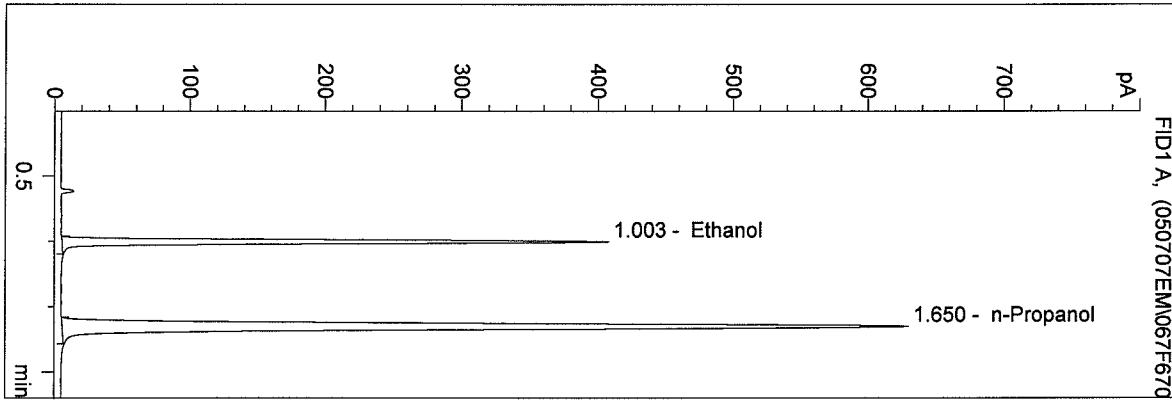


n-Propanol 1.000 g/100ml

D:\HPCHEM\1\METHODS\BLDALCO.M
 7/7/2005 9:04:29 PM
 Instrument 4
 DB-ALC1

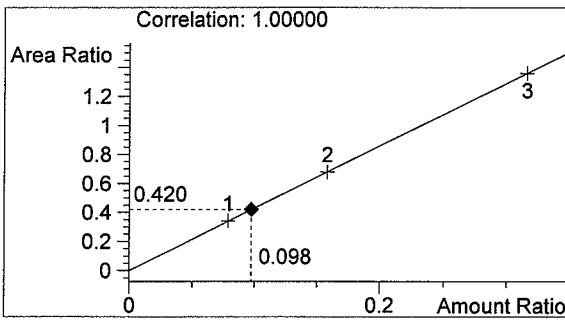
0.100 EM Control
 Estuardo J. Miranda

vial # 67

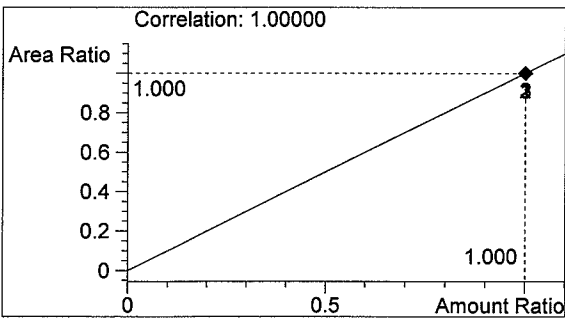


#	Compound	Area	RT
1	Ethanol	827	1.003
2	n-Propanol	1969	1.650

Totals:



Ethanol 0.098 g/100ml



n-Propanol 1.000 g/100ml

D:\HPCHEM\1\METHODS\BLDALCO.M

7/7/2005 9:07:47 PM

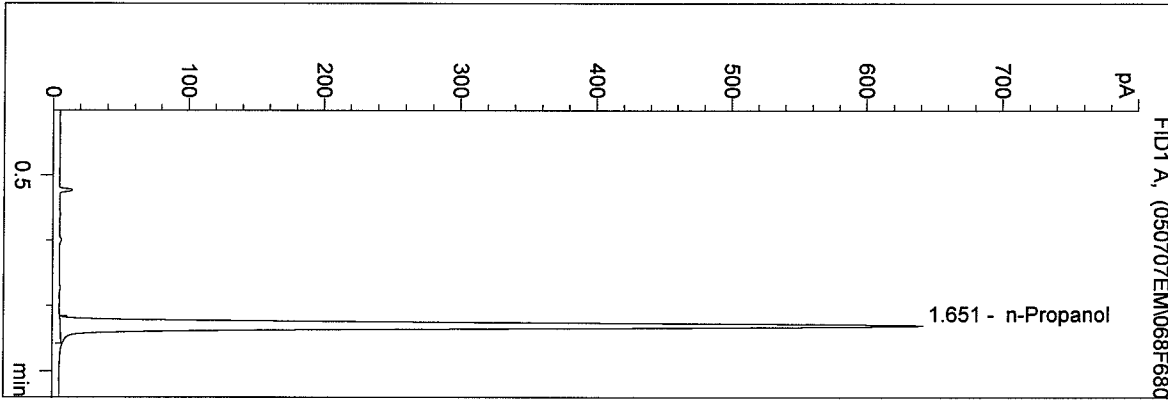
Instrument 4

DB-ALC1

BLANK

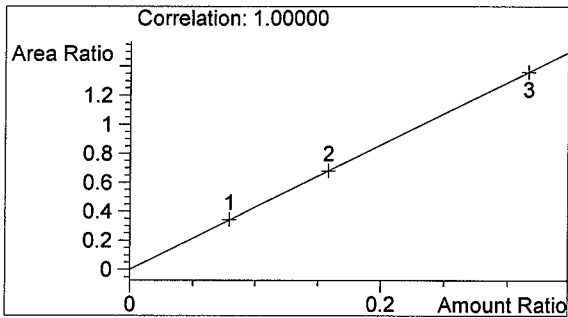
Estuardo J. Miranda

vial # 68

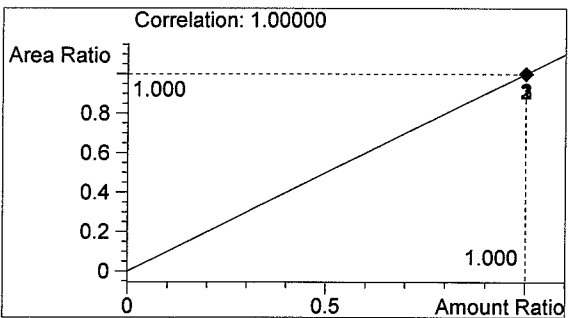


#	Compound	Area	RT
1	Ethanol	0	0.000
2	n-Propanol	2010	1.651

Totals:



Ethanol 0.000 g/100ml



n-Propanol 1.000 g/100ml