

WASHINGTON STATE TOXICOLOGY LABORATORY
 FORENSIC LABORATORY SERVICES BUREAU
 WASHINGTON STATE PATROL
 2203 AIRPORT WAY S, SUITE 360
 SEATTLE, WASHINGTON 98134-2027
 (206) 464-5435 FAX (206) 389-2738

Preparation and certification of **0.10** g/210L **Quality Assurance solution**

Batch number **02010**

Date: 5/8/2002

Preparation: 28.9 mL of absolute ethyl alcohol diluted to 18 Liters with water

Concentration of ethanol (g/100mL) measured by gas chromatography:

	Anal 1	Anal 2	Anal 3	Anal 4	Anal 5	Anal 6	Anal 7	Anal 8	Anal 9	Anal10	Anal 11	Anal 12
1	0.125	0.125	0.126									
2	0.125	0.125	0.126									
3	0.124	0.125	0.127									
4	0.125	0.124	0.126									
5	0.125	0.124	0.127									
Ctrl	0.098	0.099	0.101									

External Control:

Lot #: A021986 Exp date: Jan 2005

Target concentration: 0.10 g/100mL

Statistics:

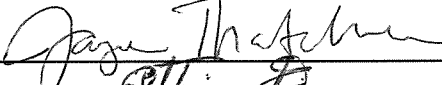
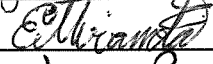
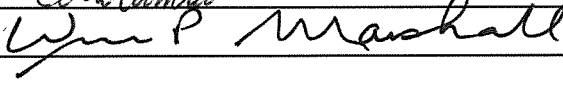
Avg. solution concent.: 0.1253 g/100 mL

SD: 0.00096

Range (3xSD): 0.1224 to 0.1282

Precision CV (%): 0.7673 %

Equivalent vapor concent.: 0.1018 g/210L

Analyst	Name	Signature	Date
1	Jayne Thatcher		05/08/02
2	Estuardo J. Miranda		05/08/02
3	William P Marshall		05/13/02
4			
5			
6			
7			
8			
9			
10			
11			
12			

Prepared by: Jayne Thatcher

according to the approved protocol



STATE OF WASHINGTON

WASHINGTON STATE PATROL
WASHINGTON STATE TOXICOLOGY LABORATORY

2203 Airport Way South, Suite 360 • Seattle, Washington 98134-2027 • (206) 464-5435 • Fax (206) 389-2738

BAC VERIFIER DATAMASTER QUALITY ASSURANCE SOLUTION
CERTIFICATION

I, Jayne E. Thatcher, do certify under penalty of perjury as follows:

I am employed by the Washington State Toxicology Laboratory, and a part of my responsibilities includes preparing and testing the alcohol solutions for the BAC Verifier Data Master breath test instrument.

I possess the following qualifications: B.S. degree in Cell and Molecular Biology and two years experience in the Washington State Toxicology Laboratory.

The simulator solution, Lot Number 02010, was prepared in the Washington State Toxicology Laboratory. I examined and tested this solution. The mean concentration of the alcohol was 0.1253 grams per 100ml.

Dated: 5/15/02
Seattle, WA

Jayne E. Thatcher
Forensic Toxicologist

JET/nf
JTQA





STATE OF WASHINGTON

WASHINGTON STATE PATROL
WASHINGTON STATE TOXICOLOGY LABORATORY

2203 Airport Way South, Suite 360 • Seattle, Washington 98134-2027 • (206) 464-5435 • Fax (206) 389-2738

BAC VERIFIER DATAMASTER QUALITY ASSURANCE SOLUTION
CERTIFICATION

I, Estuardo J. Miranda, do certify under penalty of perjury as follows:

I am employed by the Washington State Toxicology Laboratory; and a part of my responsibilities includes preparing and testing the alcohol solutions for the BAC Verifier Data Master breath testing instrument.

I possess the following qualifications: Bachelor of Science in Chemistry, Master of Science in Zoology, seven years experience in biochemical research and four years experience in Forensic Toxicology.

The quality assurance solution, Lot Number 02010 was prepared in the Washington State Toxicology Laboratory. I examined and tested this solution. The mean concentration of alcohol was 0.1253 grams per 100mL.

Dated: 05/15/02
Seattle, WA

Estuardo J. Miranda
Forensic Toxicologist

EM/nf
EMQA





STATE OF WASHINGTON

WASHINGTON STATE PATROL
WASHINGTON STATE TOXICOLOGY LABORATORY

2203 Airport Way South, Suite 360 • Seattle, Washington 98134-2027 • (206) 464-5435 • Fax (206) 389-2738

BAC VERIFIER DATAMASTER QUALITY ASSURANCE SOLUTION
CERTIFICATION

I, William P. Marshall, do certify under penalty of perjury that:

I am employed by the Washington State Toxicology Laboratory, and a part of my responsibilities includes preparing and testing the alcohol solutions for the BAC Verifier Data Master breath testing instrument.

I possess the following qualifications: BS degree in Chemistry and twenty-eight years of analytical laboratory experience including twelve years of toxicology experience.

The quality assurance solution, Lot Number 02010 was prepared in the Washington State Toxicology Laboratory. I examined and tested this solution. The mean concentration of the alcohol was 0.1253 grams per 100ml.

Dated: 5/15/02
Seattle, WA

William P. Marshall
Forensic Toxicologist

WM/nf
WMQA



Sequence Table (Front Injector):

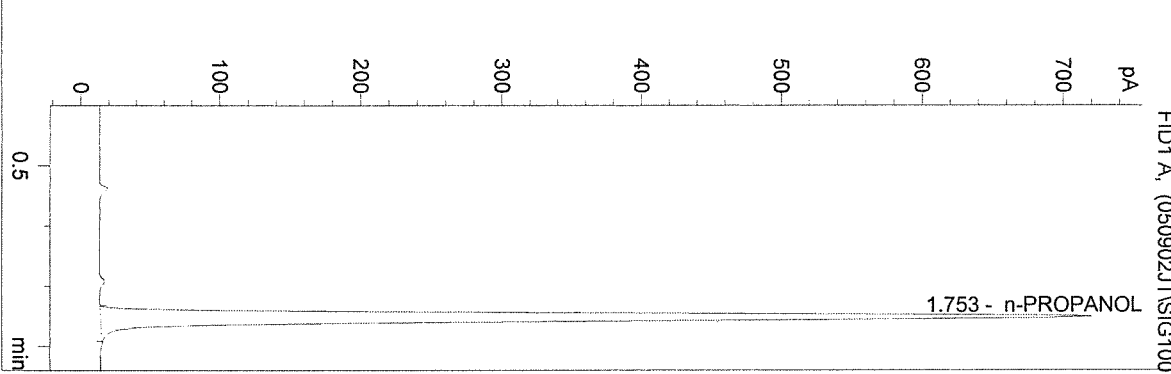
Method and Injection Info Part:

Line	Vial	SampleName	Method	Inj	SampleType	InjVolume	DataFile
1	1	BLANK	BLDALCO3	1	Sample		
2	2	0.079 CAL	BLDALCO3	1	Calib		
3	3	0.158 CAL	BLDALCO3	1	Calib		
4	4	0.316 CAL	BLDALCO3	1	Calib		
5	5	BLANK	BLDALCO3	1	Sample		
6	6	.02 STANDARD	BLDALCO3	1	Sample		
7	7	0.101 CONTROL	BLDALCO3	1	Ctrl Samp		
8	8	BLANK	BLDALCO3	1	Sample		
9	9	QA SOLUTION1	BLDALCO3	1	Sample		
10	10	QA SOLUTION2	BLDALCO3	1	Sample		
11	11	QA SOLUTION3	BLDALCO3	1	Sample		
12	12	QA SOLUTION4	BLDALCO3	1	Sample		
13	13	QA SOLUTION5	BLDALCO3	1	Sample		
14	14	0.197 CONTROL	BLDALCO3	1	Ctrl Samp		
15	15	BLANK	BLDALCO3	1	Sample		

Sequence Table (Back Injector):

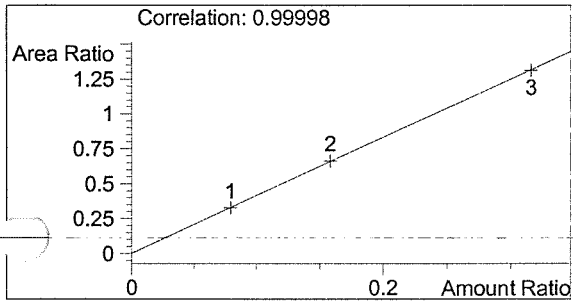
No entries - empty table!

vial # 1

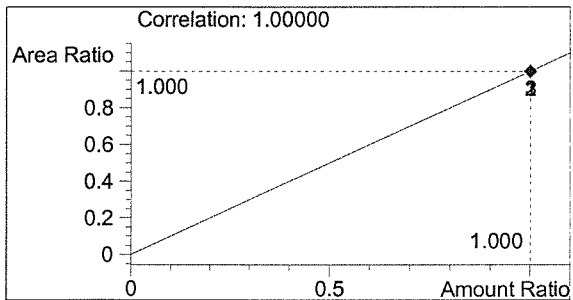


#	Compound	Area	RT
1	ETHANOL	0	0.000
2	n-PROPANOL	3213	1.753

Totals:



ETHANOL 0.000 mg/L

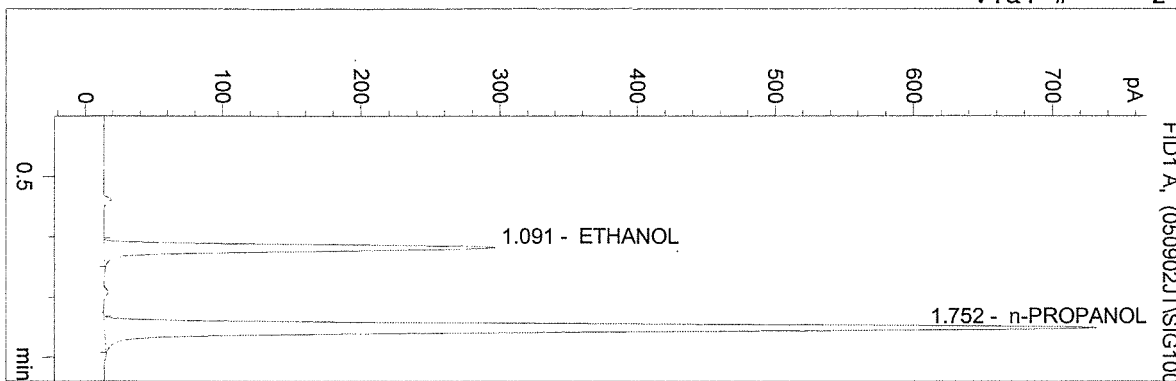


n-PROPANOL 1.000 mg/L

C:\HPCHEM\1\METHODS\BLDALCO3.M
 5/9/02 9:36:37 AM
 Instrument 3
 DB-ALC1

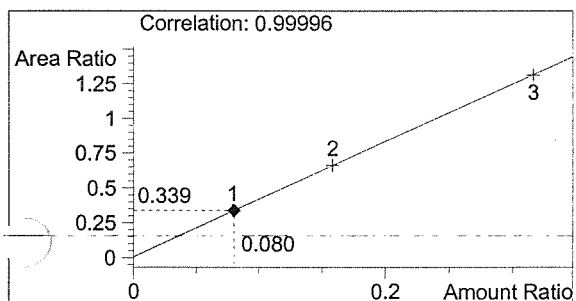
0.079 CAL
 JAYNE THATCHER

vial # 2

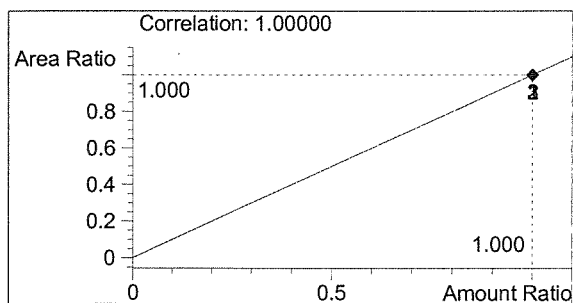


#	Compound	Area	RT
1	ETHANOL	1102	1.091
2	n-PROPANOL	3252	1.752

Totals:

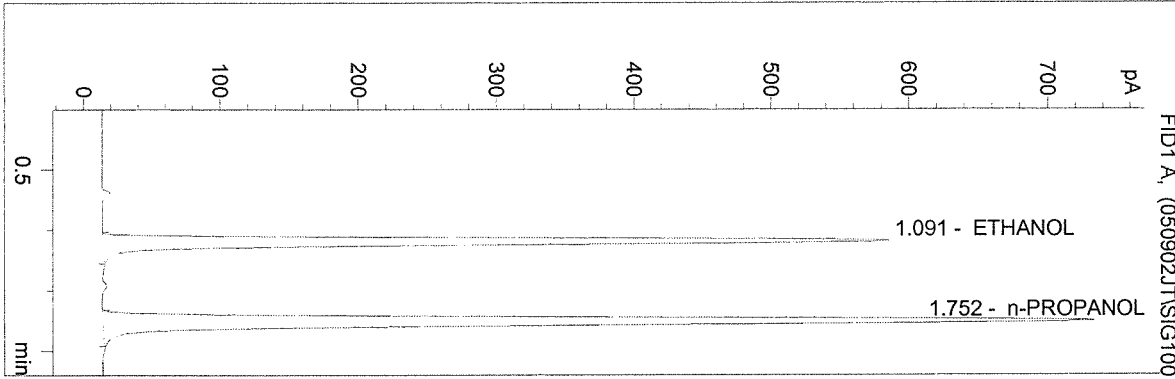


ETHANOL 0.080 mg/L



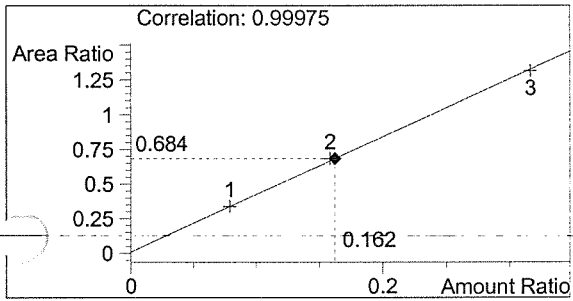
n-PROPANOL 1.000 mg/L

vial # 3

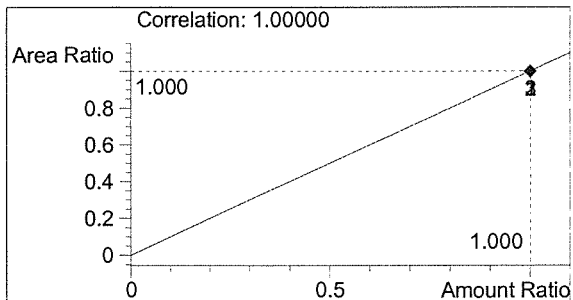


#	Compound	Area	RT
1	ETHANOL	2222	1.091
2	n-PROPANOL	3249	1.752

Totals:



ETHANOL 0.162 mg/L

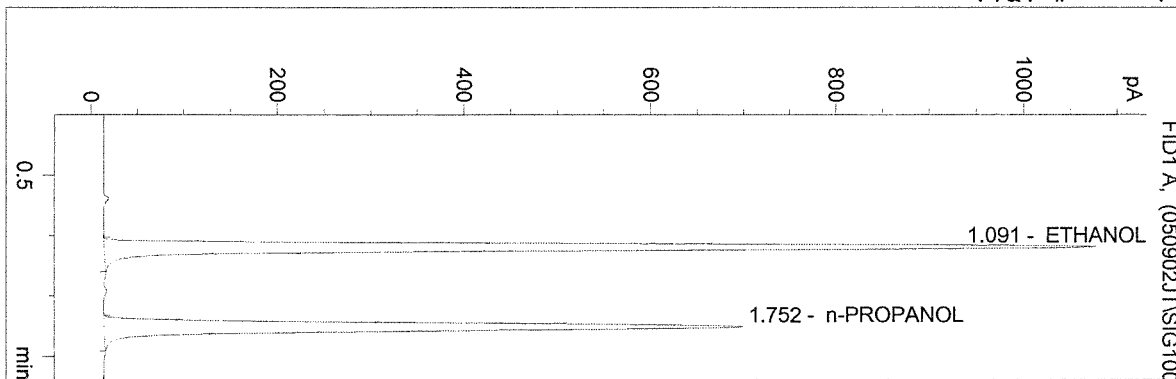


n-PROPANOL 1.000 mg/L

C:\HPCHEM\1\METHODS\BLDALCO3.M
 5/9/02 9:43:26 AM
 Instrument 3
 DB-ALC1

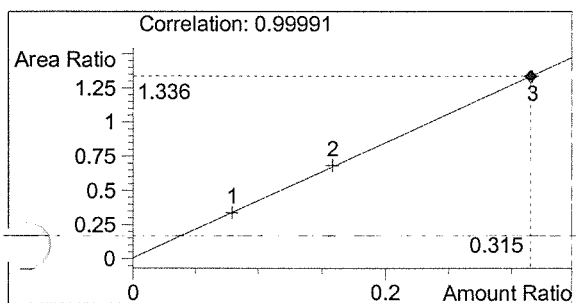
0.316 CAL
 JAYNE THATCHER

vial # 4

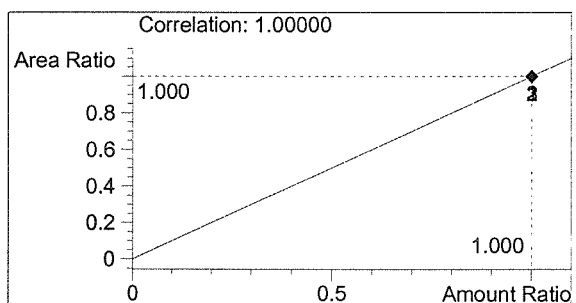


#	Compound	Area	RT
1	ETHANOL	4139	1.091
2	n-PROPANOL	3099	1.752

Totals:



ETHANOL 0.315 mg/L



n-PROPANOL 1.000 mg/L

C:\HPCHEM\1\METHODS\BLDALCO3.M

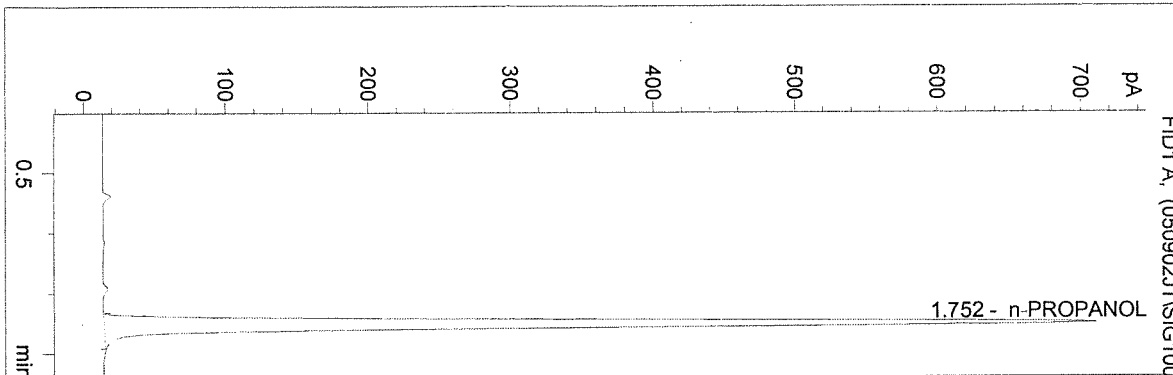
5/9/02 9:46:53 AM

Instrument 3

DB-ALC1

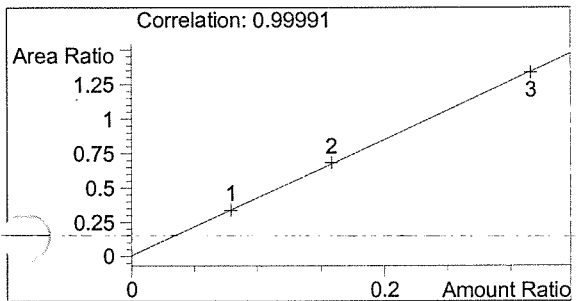
BLANK
JAYNE THATCHER

vial # 5

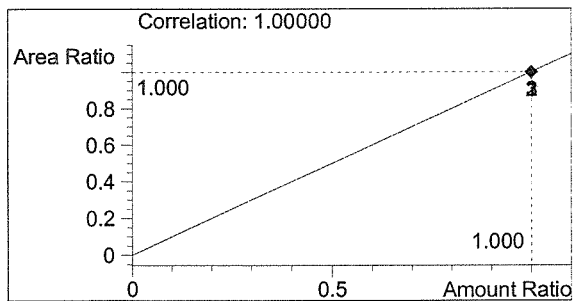


#	Compound	Area	RT
1	ETHANOL	0	0.000
2	n-PROPANOL	3151	1.752

Totals:



ETHANOL 0.000 mg/L



n-PROPANOL 1.000 mg/L

C:\HPCHEM\1\METHODS\BLDALCO3.M

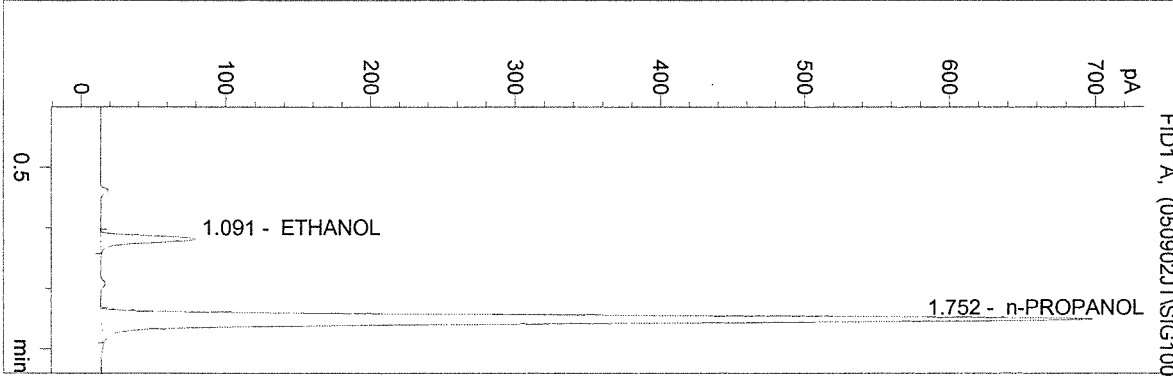
5/9/02 9:50:16 AM

Instrument 3

DB-ALC1

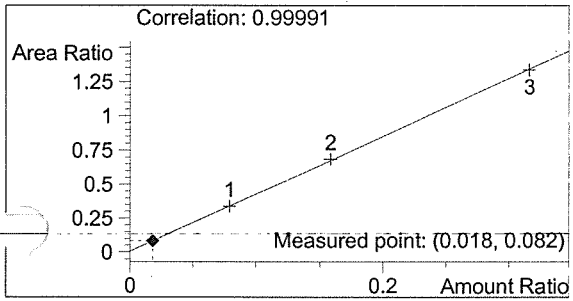
.02 STANDARD
JAYNE THATCHER

vial # 6

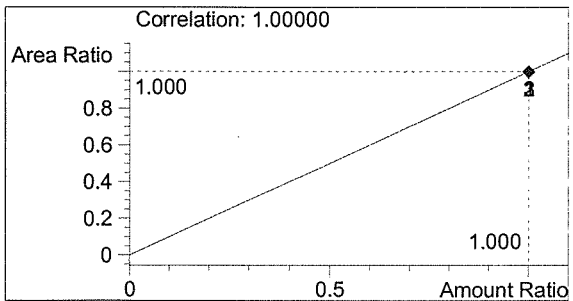


#	Compound	Area	RT
1	ETHANOL	255	1.091
2	n-PROPANOL	3095	1.752

Totals:



ETHANOL 0.018 mg/L

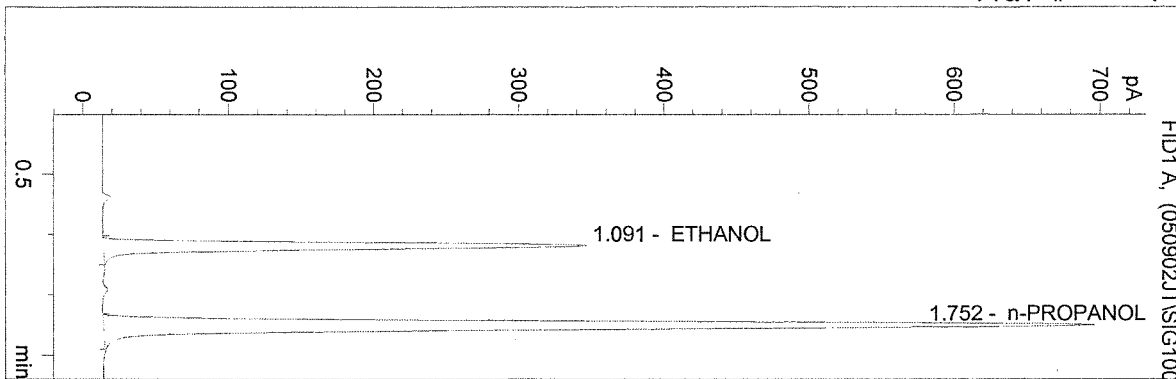


n-PROPANOL 1.000 mg/L

C:\HPCHEM\1\METHODS\BLDALCO3.M
 5/9/02 9:53:39 AM
 Instrument 3
 DB-ALC1

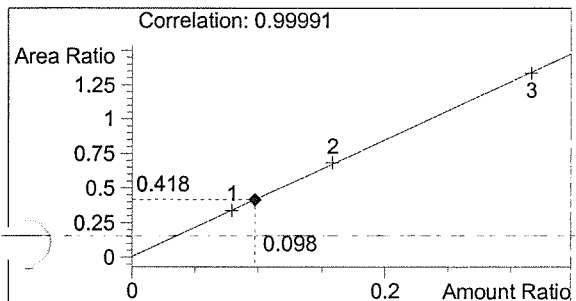
0.101 CONTROL
 JAYNE THATCHER

vial # 7

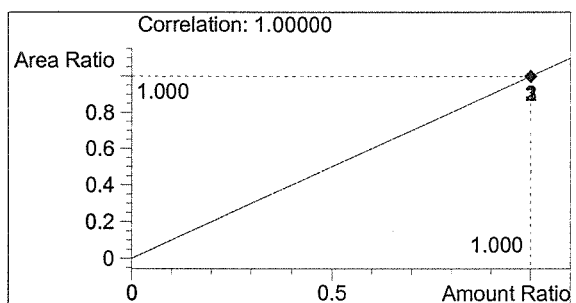


#	Compound	Area	RT
1	ETHANOL	1297	1.091
2	n-PROPANOL	3099	1.752

Totals:

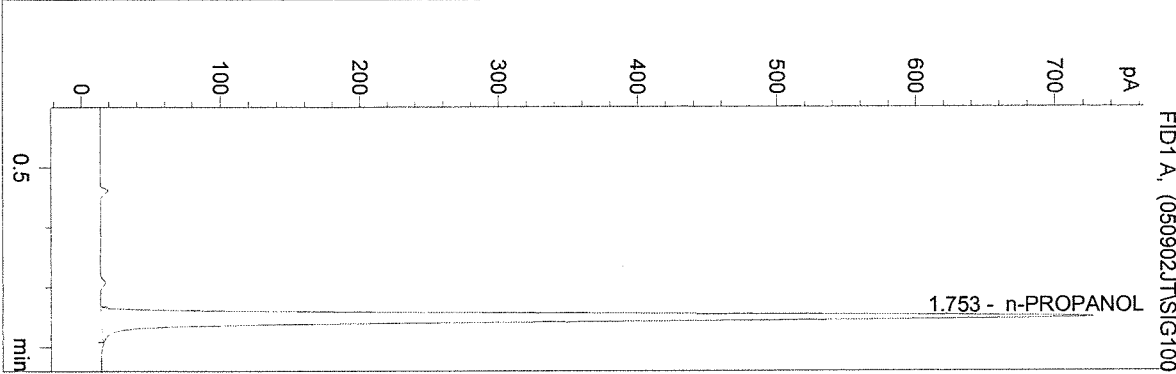


ETHANOL 0.098 mg/L



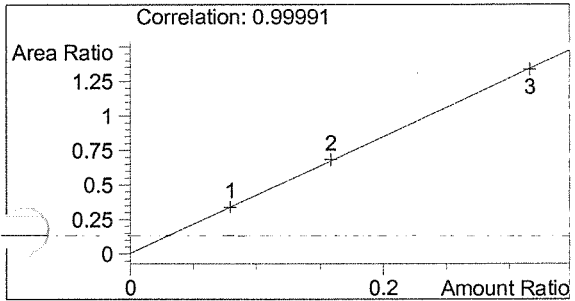
n-PROPANOL 1.000 mg/L

vial # 8

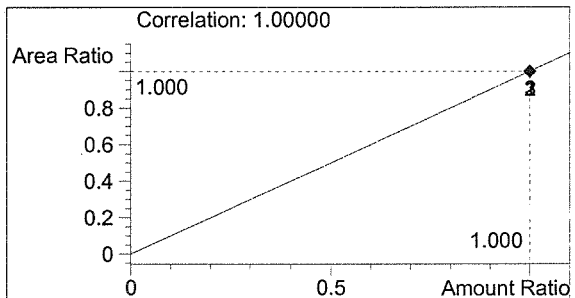


#	Compound	Area	RT
1	ETHANOL	0	0.000
2	n-PROPANOL	3229	1.753

Totals:



ETHANOL 0.000 mg/L



n-PROPANOL 1.000 mg/L

C:\HPCHEM\1\METHODS\BLDALCO3.M

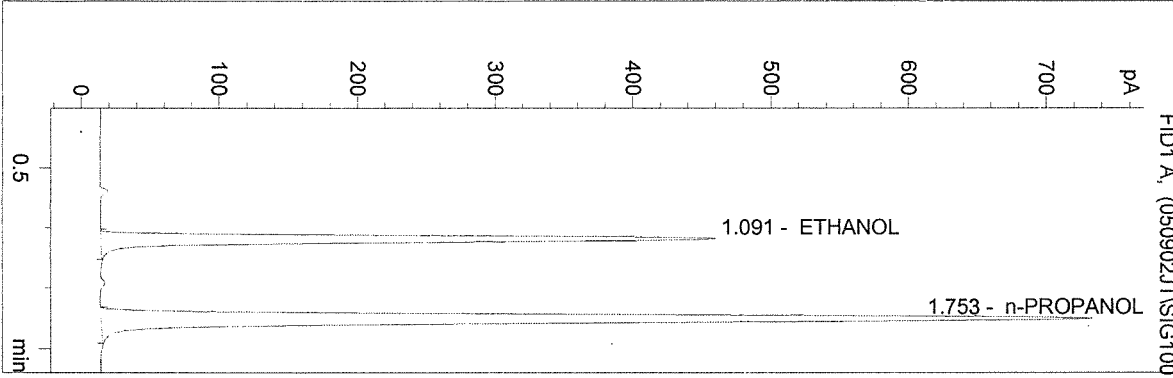
5/9/02 10:00:26 AM

Instrument 3

DB-ALC1

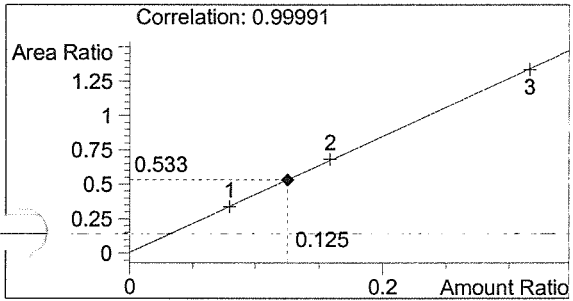
QA SOLUTION1
JAYNE THATCHER

vial # 9

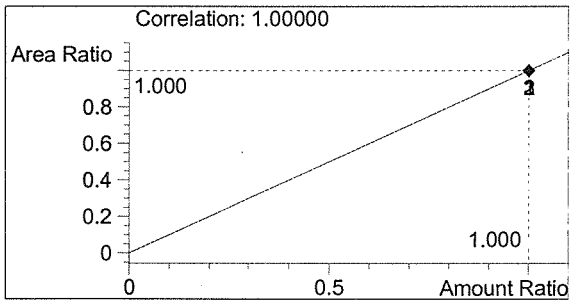


#	Compound	Area	RT
1	ETHANOL	1737	1.091
2	n-PROPANOL	3257	1.753

Totals:

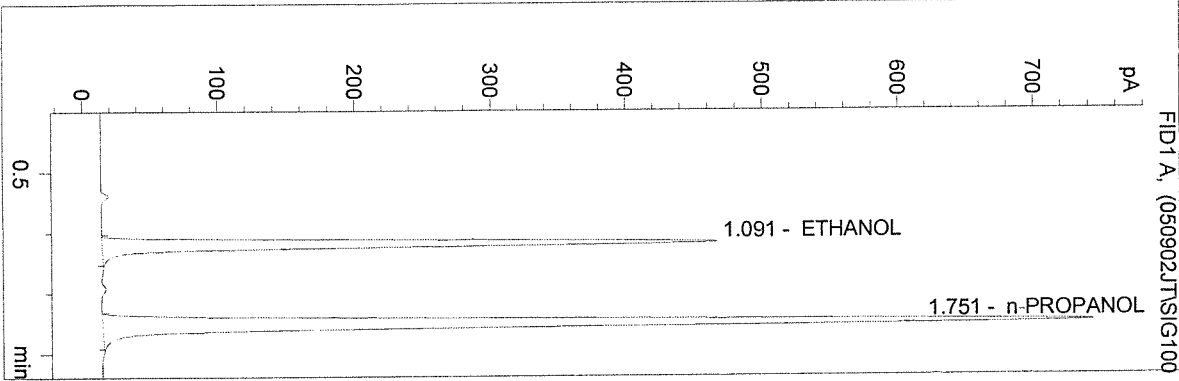


ETHANOL 0.125 mg/L



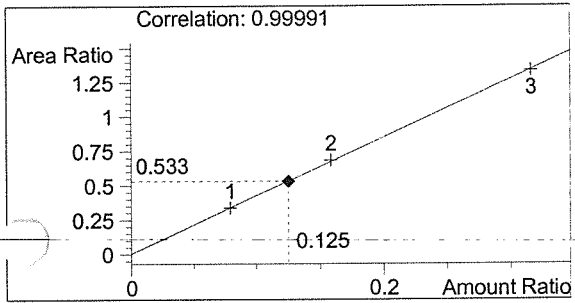
n-PROPANOL 1.000 mg/L

vial # 10

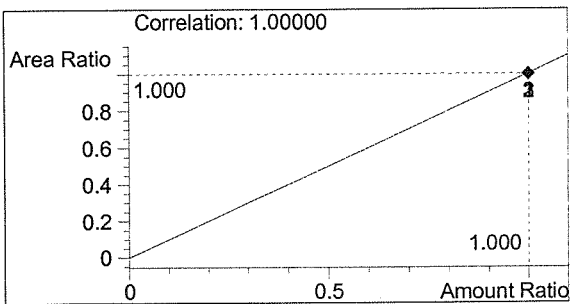


#	Compound	Area	RT
1	ETHANOL	1748	1.091
2	n-PROPANOL	3278	1.751

Totals:



ETHANOL 0.125 mg/L

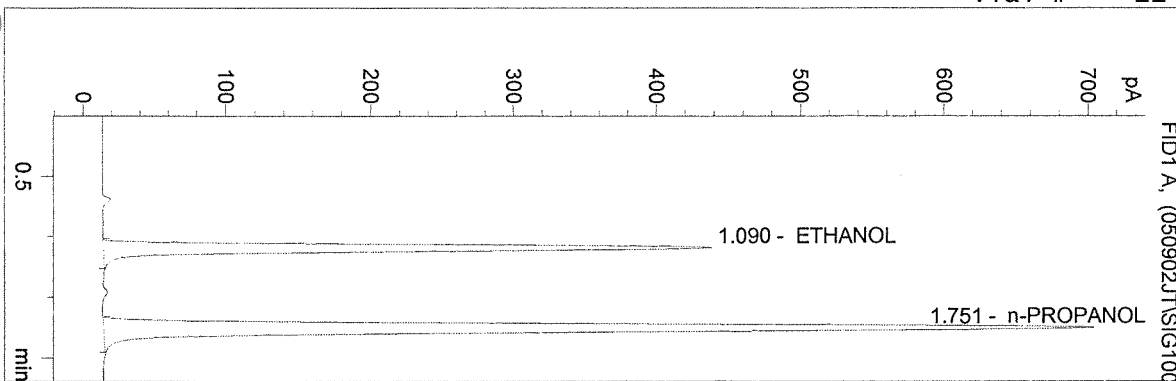


n-PROPANOL 1.000 mg/L

C:\HPCHEM\1\METHODS\BLDALCO3.M
 5/9/02 10:07:13 AM
 Instrument 3
 DB-ALC1

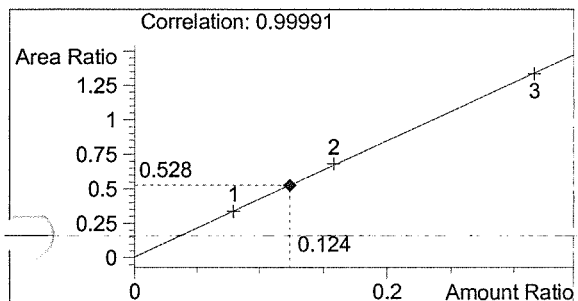
QA SOLUTION3
 JAYNE THATCHER

vial # 11

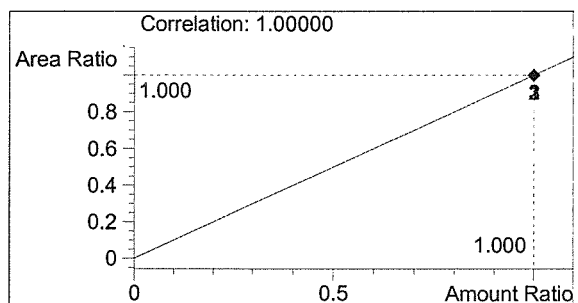


#	Compound	Area	RT
1	ETHANOL	1644	1.090
2	n-PROPANOL	3114	1.751

Totals:

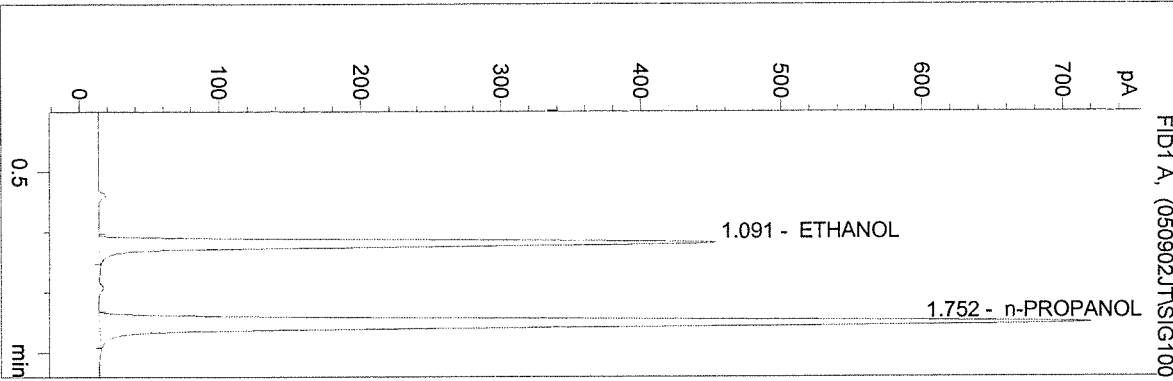


ETHANOL 0.124 mg/L



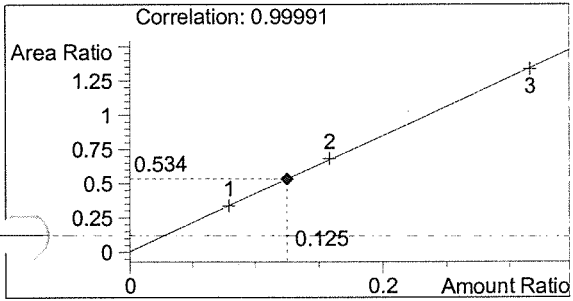
n-PROPANOL 1.000 mg/L

vial # 12

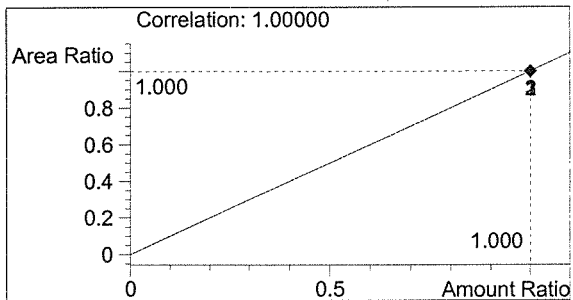


#	Compound	Area	RT
1	ETHANOL	1701	1.091
2	n-PROPANOL	3186	1.752

Totals:

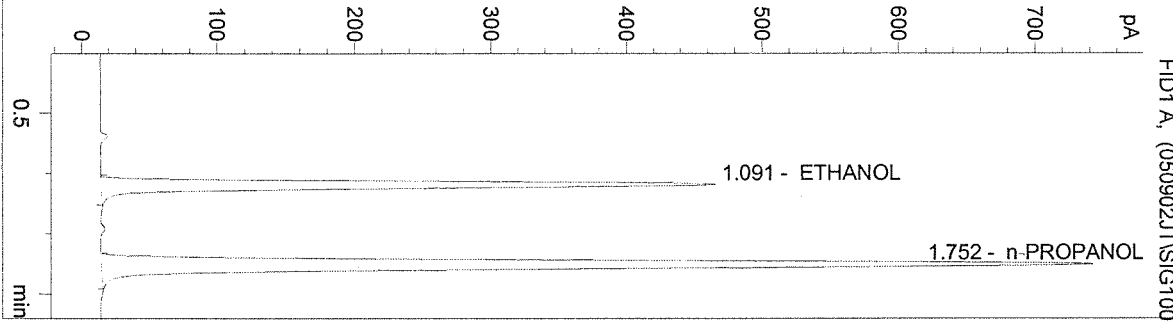


ETHANOL 0.125 mg/L



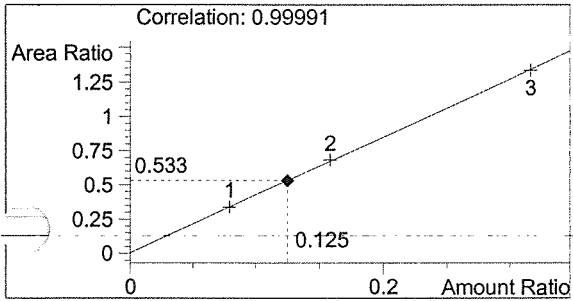
n-PROPANOL 1.000 mg/L

vial # 13

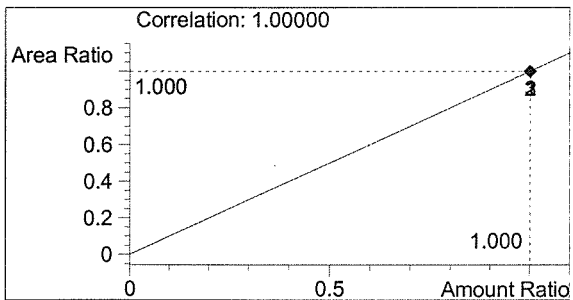


#	Compound	Area	RT
1	ETHANOL	1768	1.091
2	n-PROPANOL	3315	1.752

Totals:



ETHANOL 0.125 mg/L

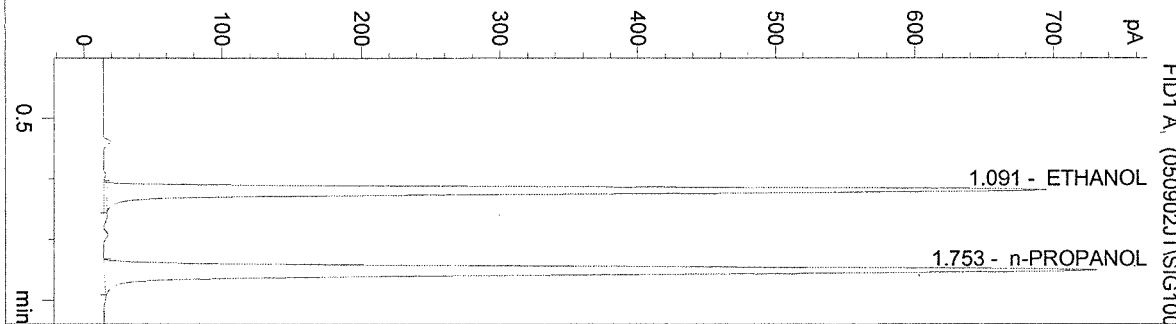


n-PROPANOL 1.000 mg/L

C:\HPCHEM\1\METHODS\BLDALCO3.M
 5/9/02 10:17:23 AM
 Instrument 3
 DB-ALC1

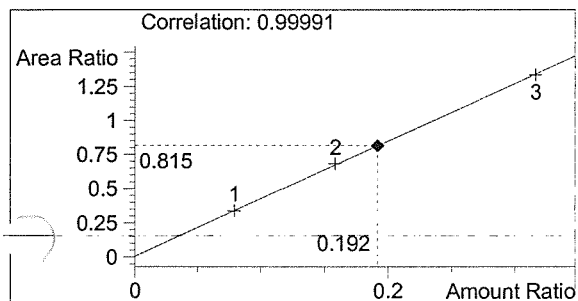
0.197 CONTROL
 JAYNE THATCHER

vial # 14

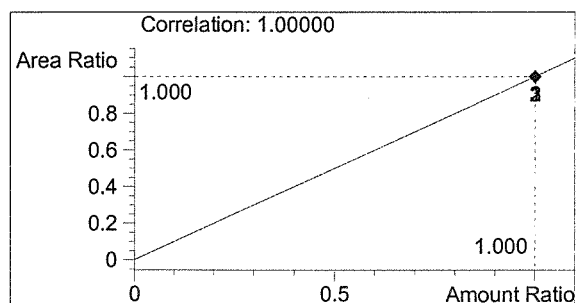


#	Compound	Area	RT
1	ETHANOL	2640	1.091
2	n-PROPANOL	3238	1.753

Totals:



ETHANOL 0.192 mg/L

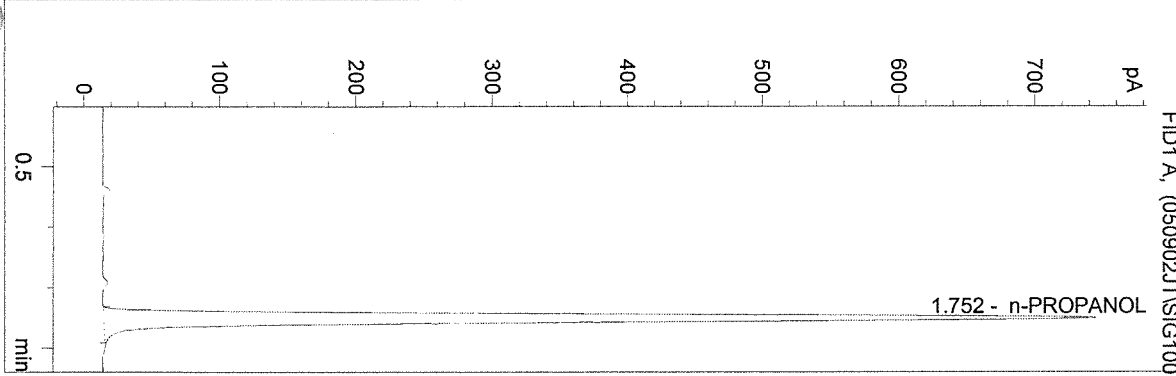


n-PROPANOL 1.000 mg/L

C:\HPCHEM\1\METHODS\BLDALCO3.M
5/9/02 10:20:48 AM
Instrument 3
DB-ALC1

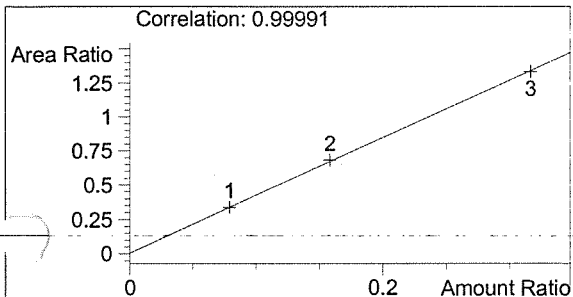
BLANK
JAYNE THATCHER

vial # 15

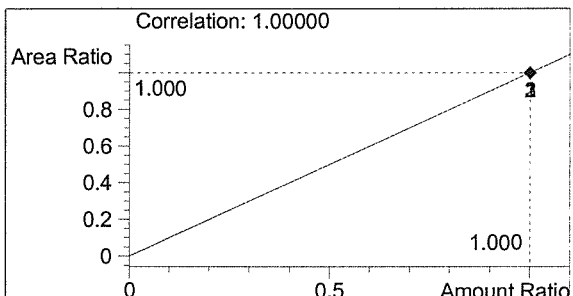


#	Compound	Area	RT
1	ETHANOL	0	0.000
2	n-PROPANOL	3300	1.752

Totals:

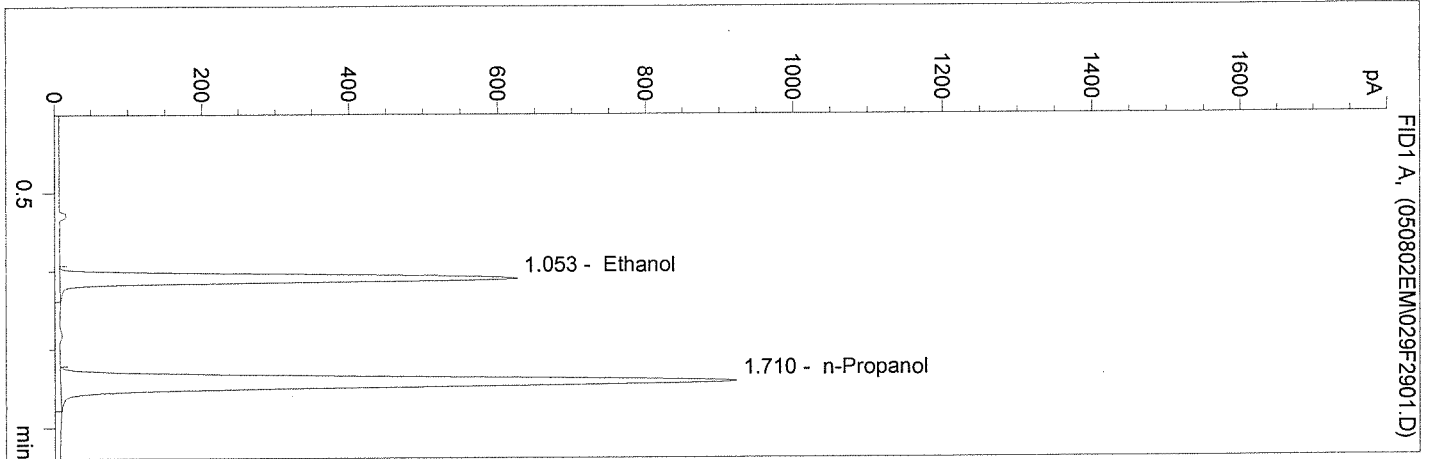


ETHANOL 0.000 mg/L



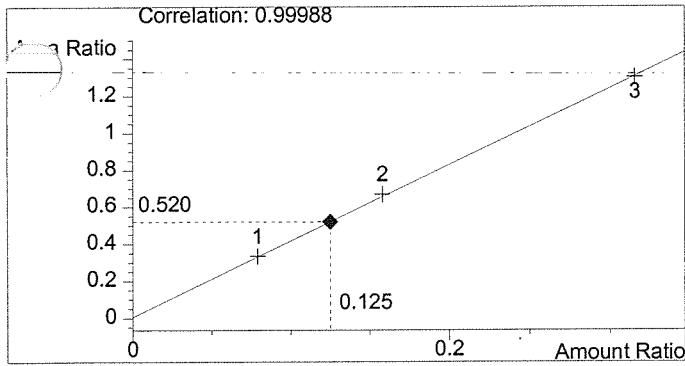
n-PROPANOL 1.000 mg/L

vial # 29

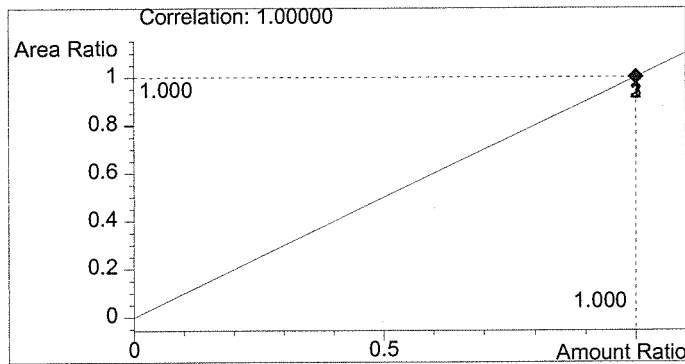


#	Compound	Area	RT
1	Ethanol	2096	1.053
2	n-Propanol	4030	1.710

Totals:



Ethanol 0.125 g/100ml

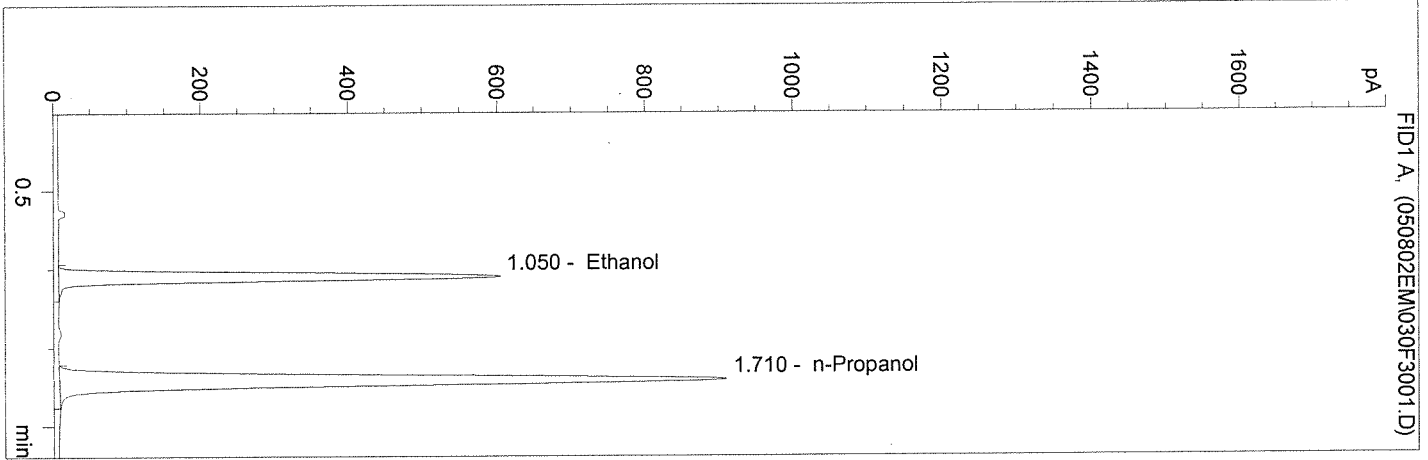


n-Propanol 1.000 g/100ml

C:\HPCHEM\1\METHODS\BLDALCO.M
5/8/02 1:45:17 PM
Instrument 1
ALC1

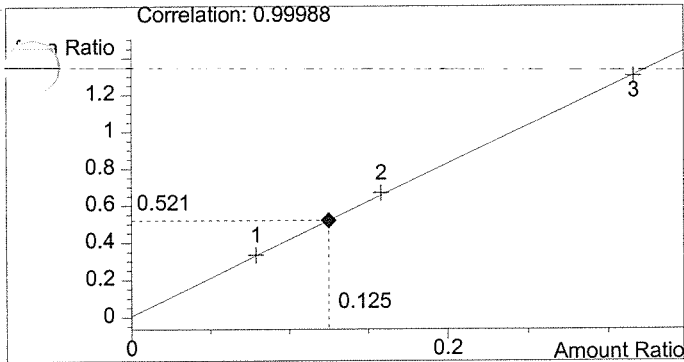
QA sol. 02010
Estuardo J. Miranda

vial # 30

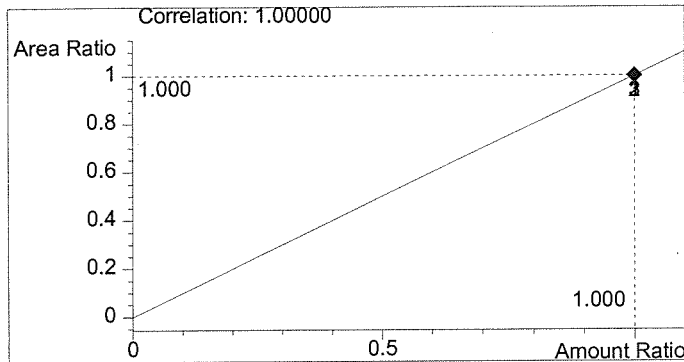


#	Compound	Area	RT
1	Ethanol	2073	1.050
2	n-Propanol	3981	1.710

Totals:



Ethanol 0.125 g/100ml



n-Propanol 1.000 g/100ml

C:\HPCHEM\1\METHODS\BLDALCO.M

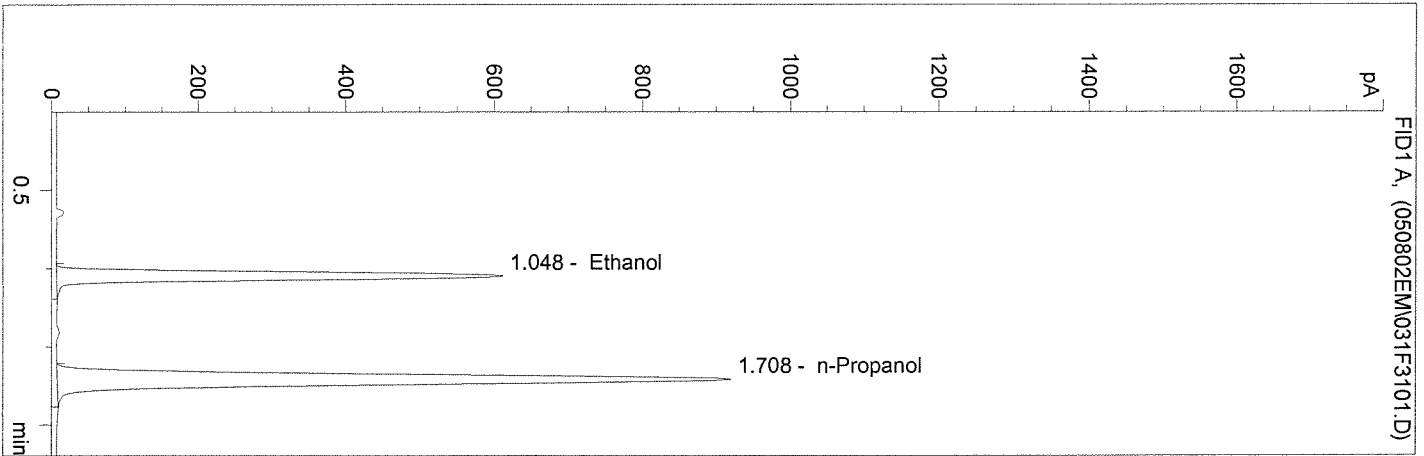
5/8/02 1:48:19 PM

Instrument 1

ALC1

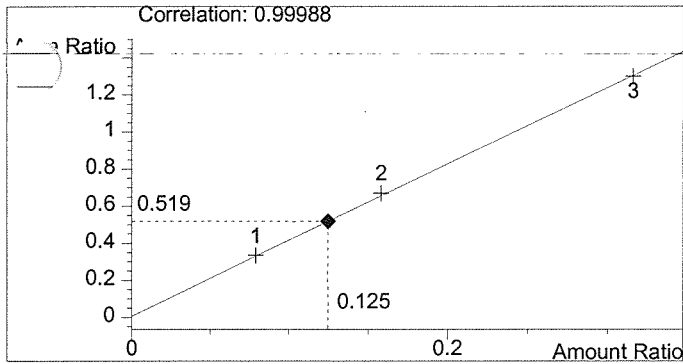
QA sol. 02010
Estuardo J. Miranda

vial # 31

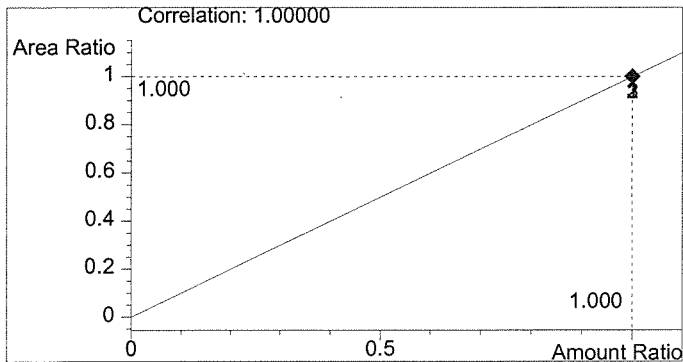


#	Compound	Area	RT
1	Ethanol	2082	1.048
2	n-Propanol	4008	1.708

Totals:



Ethanol 0.125 g/100ml



n-Propanol 1.000 g/100ml

C:\HPCHEM\1\METHODS\BLDALCO.M

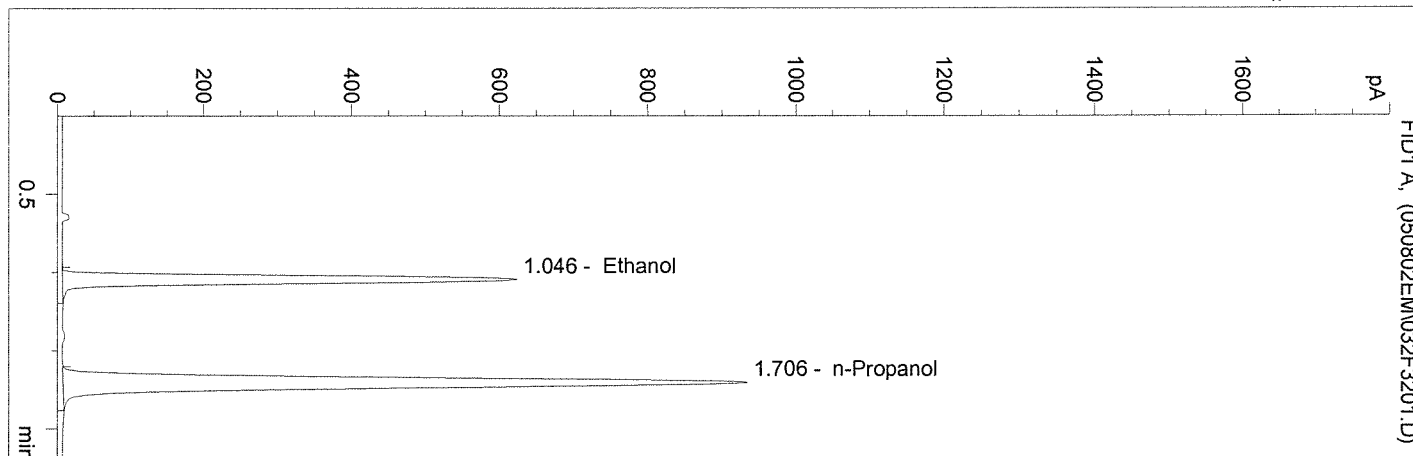
5/8/02 1:51:20 PM

Instrument 1

ALC1

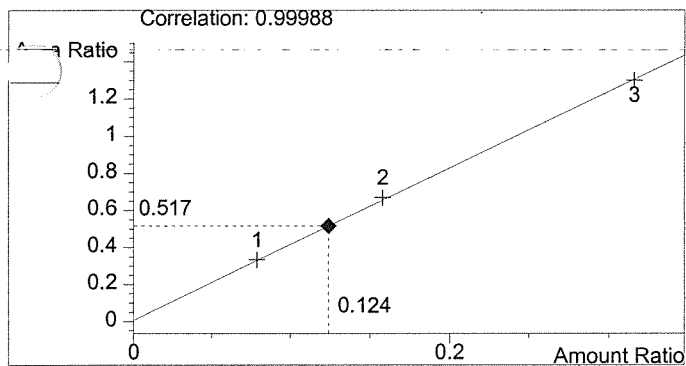
QA sol. 02010
Estuardo J. Miranda

vial # 32

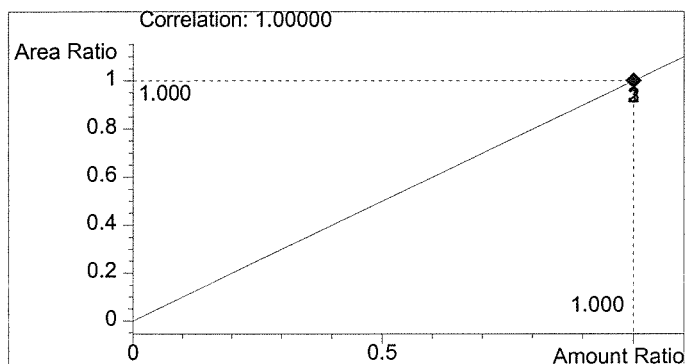


#	Compound	Area	RT
1	Ethanol	2096	1.046
2	n-Propanol	4055	1.706

Totals:



Ethanol 0.124 g/100ml

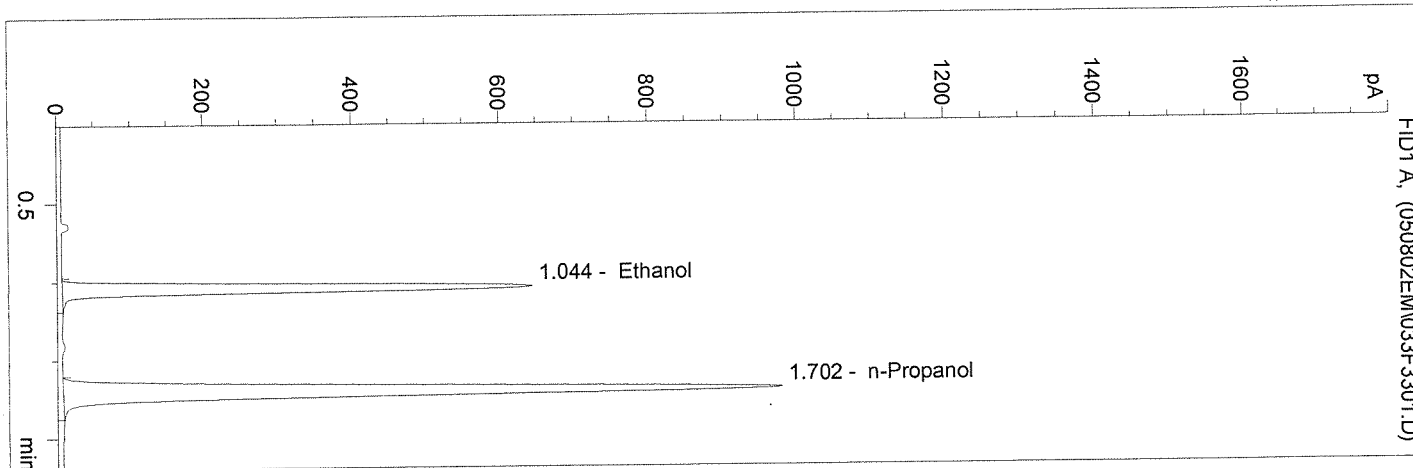


n-Propanol 1.000 g/100ml

C:\HPCHEM\1\METHODS\BLDALCO.M
 5/8/02 1:54:39 PM
 Instrument 1
 ALC1

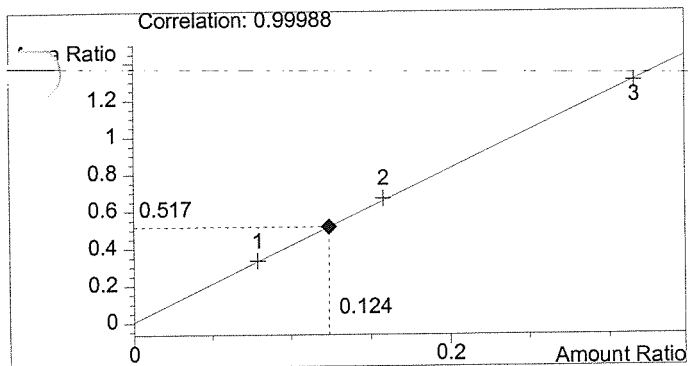
QA sol. 02010
 Estuardo J. Miranda

vial # 33

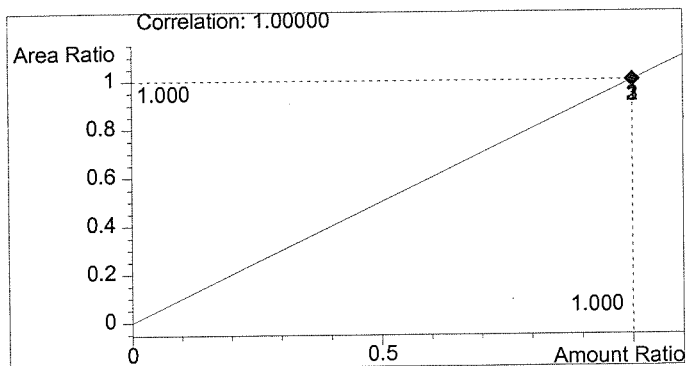


#	Compound	Area	RT
1	Ethanol	2225	1.044
2	n-Propanol	4307	1.702

Totals:



Ethanol 0.124 g/100ml



n-Propanol 1.000 g/100ml

C:\HPCHEM\1\METHODS\BLDALCO.M

5/8/02 1:57:41 PM

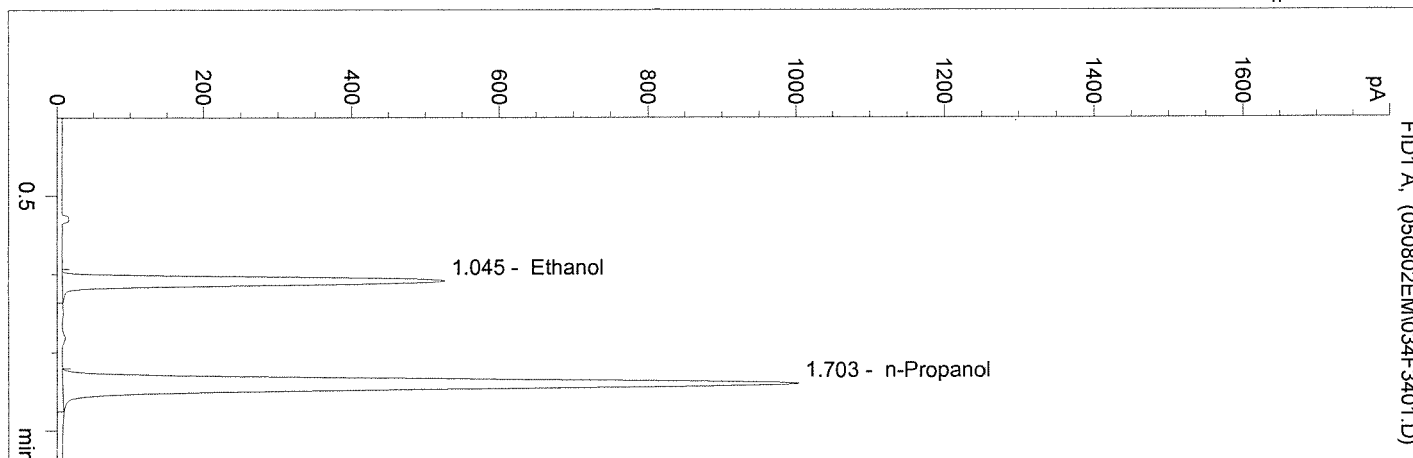
Instrument 1

ALC1

0.100

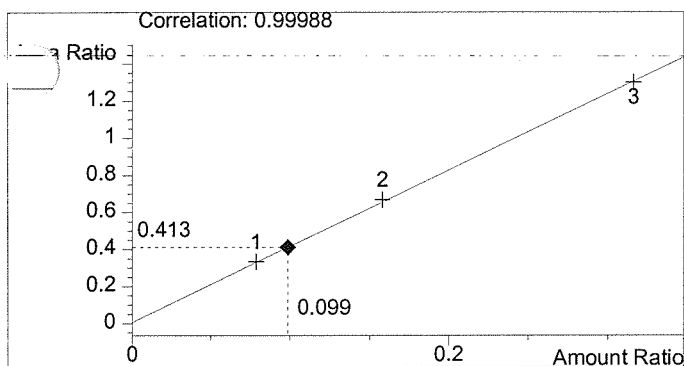
Estuardo J. Miranda

vial # 34

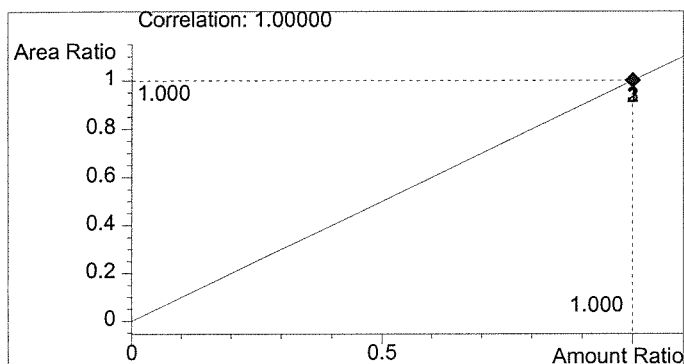


#	Compound	Area	RT
1	Ethanol	1827	1.045
2	n-Propanol	4425	1.703

Totals:



Ethanol 0.099 g/100ml

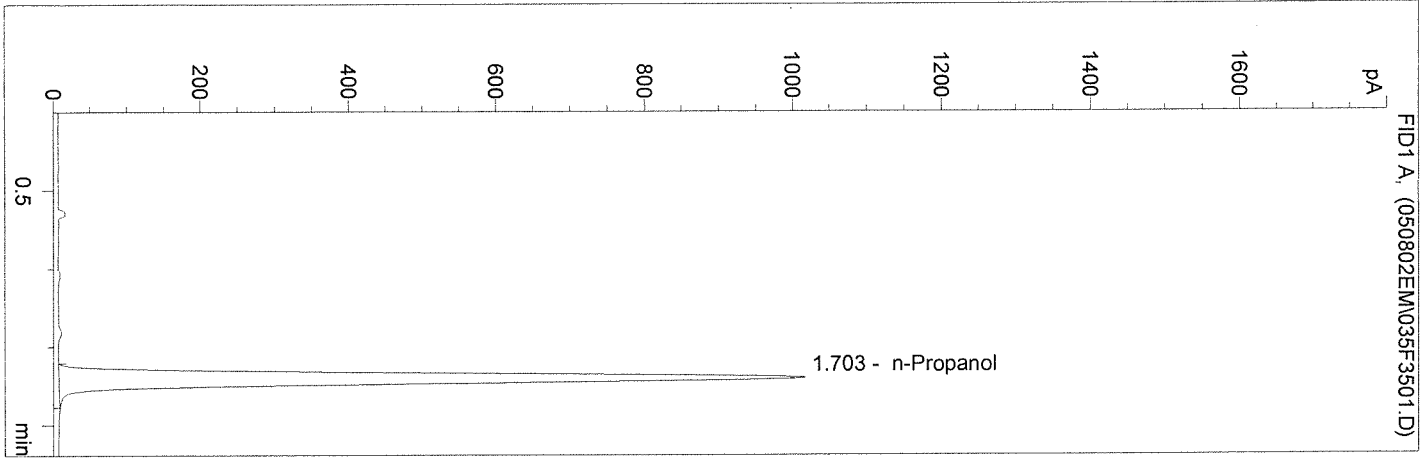


n-Propanol 1.000 g/100ml

C:\HPCHEM\1\METHODS\BLDALCO.M
5/8/02 2:00:42 PM
Instrument 1
ALC1

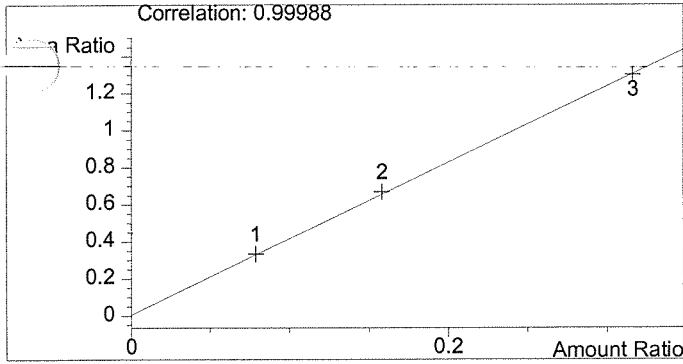
Blank
Estuardo J. Miranda

vial # 35

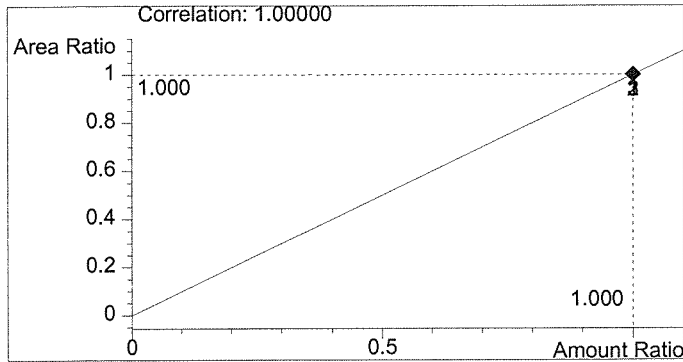


#	Compound	Area	RT
1	Ethanol	0	0.000
2	n-Propanol	4460	1.703

Totals:

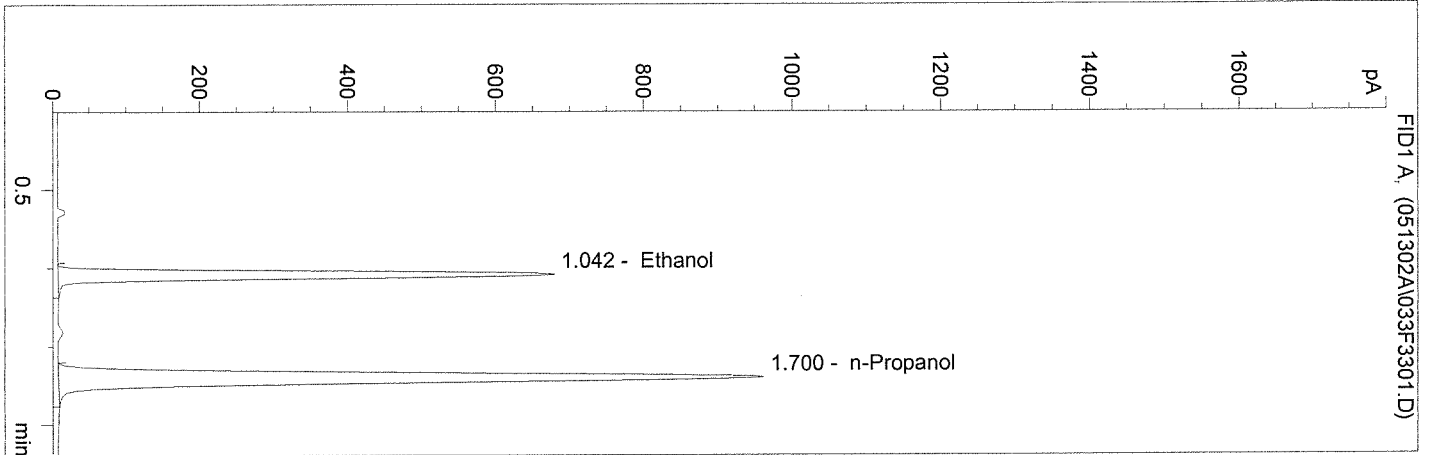


Ethanol 0.000 g/100ml



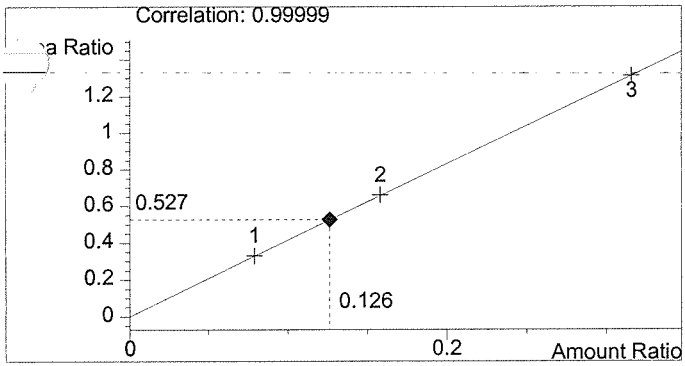
n-Propanol 1.000 g/100ml

vial # 33

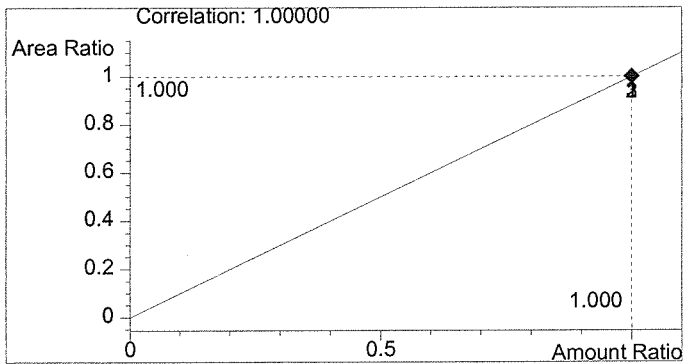


#	Compound	Area	RT
1	Ethanol	2158	1.042
2	n-Propanol	4094	1.700

Totals:



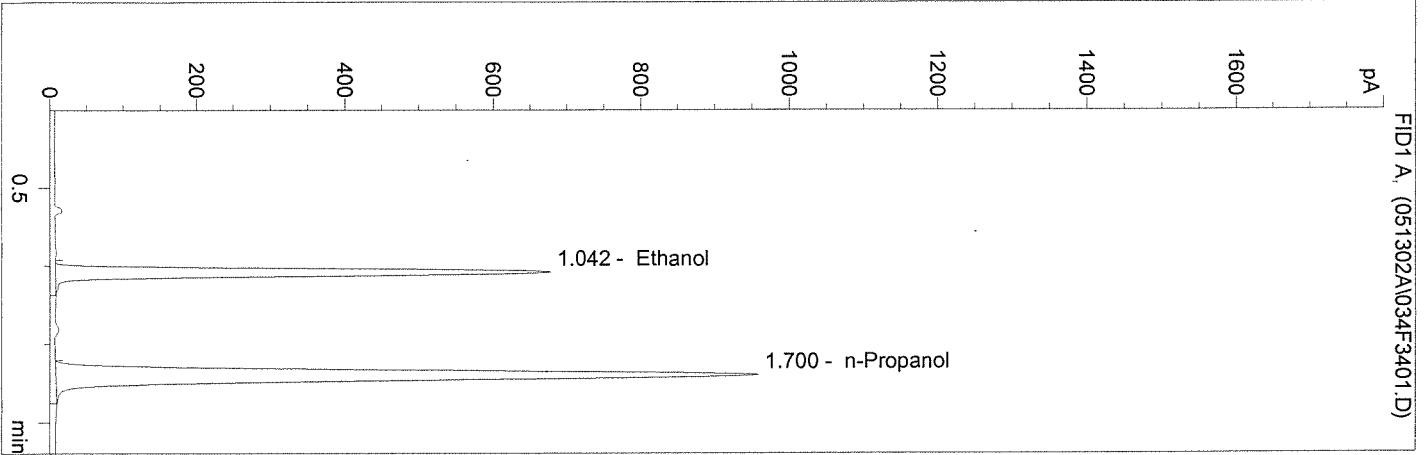
Ethanol 0.126 g/100ml



n-Propanol 1.000 g/100ml

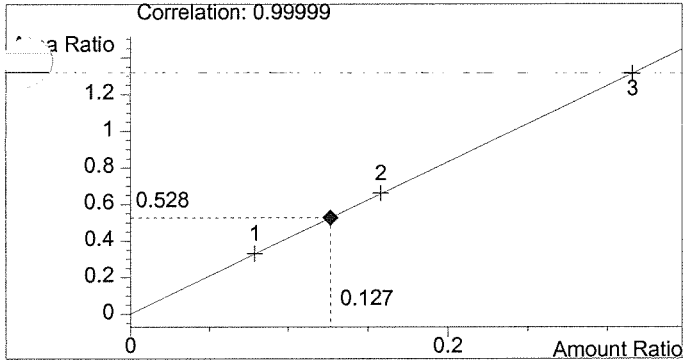
STDS
 022714

vial # 34

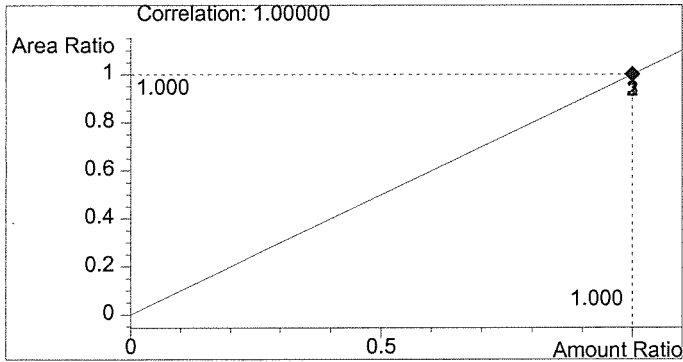


#	Compound	Area	RT
1	Ethanol	2147	1.042
2	n-Propanol	4067	1.700

Totals:



Ethanol 0.127 g/100ml

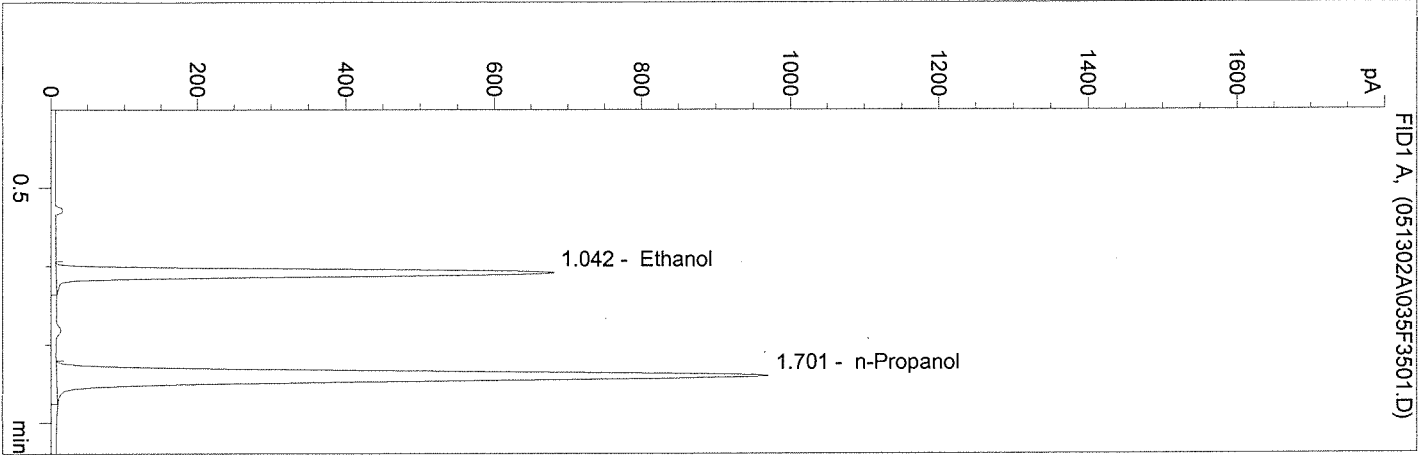


n-Propanol 1.000 g/100ml

C:\HPCHEM\1\METHODS\BLDALCO.M
 5/13/02 11:24:34 AM
 Instrument 1
 FID1-ALC1

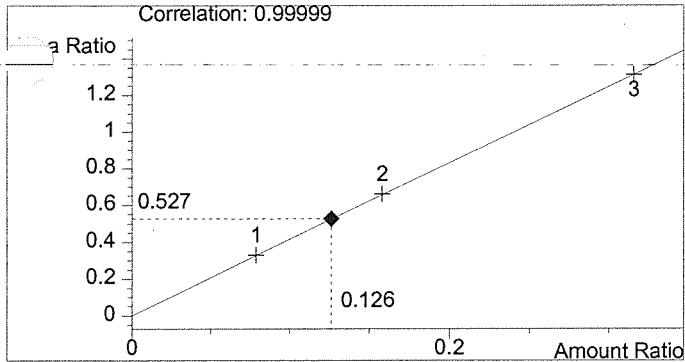
02010 QA SOLN
 WP MARSHALL

vial # 35

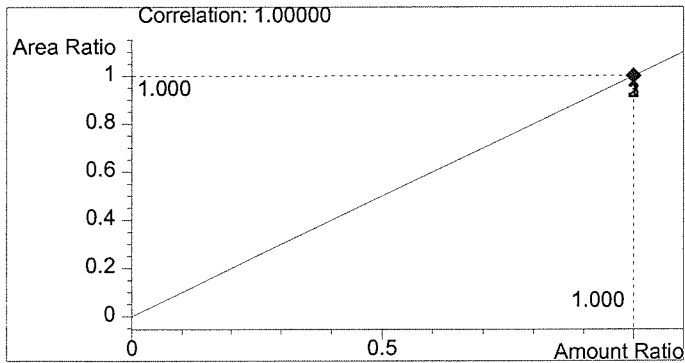


#	Compound	Area	RT
1	Ethanol	2179	1.042
2	n-Propanol	4135	1.701

Totals:



Ethanol 0.126 g/100ml

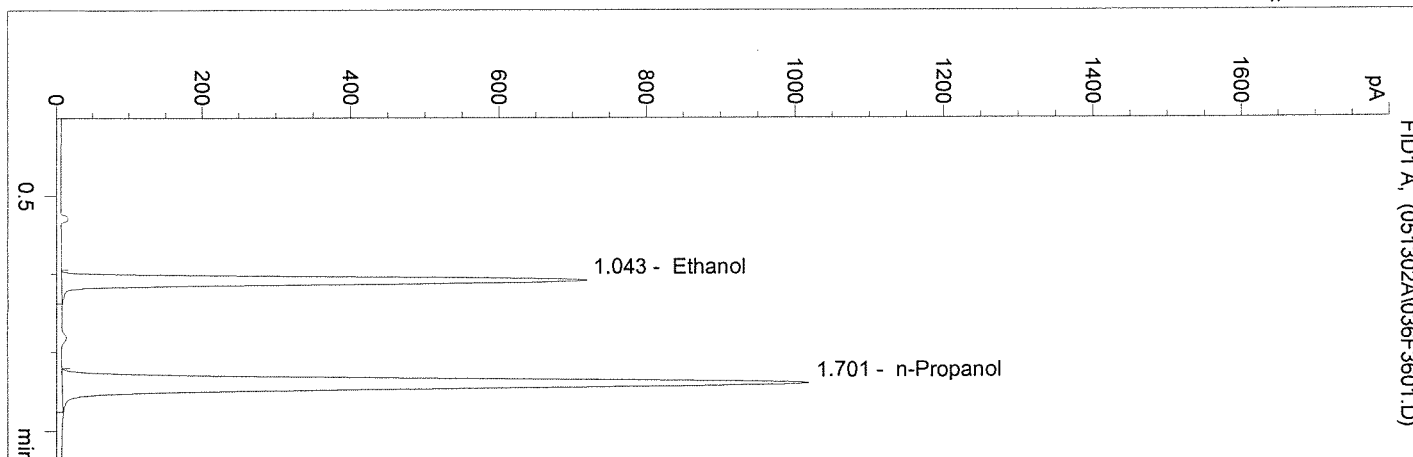


n-Propanol 1.000 g/100ml

C:\HPCHEM\1\METHODS\BLDALCO.M
 5/13/02 11:27:36 AM
 Instrument 1
 -ALC1

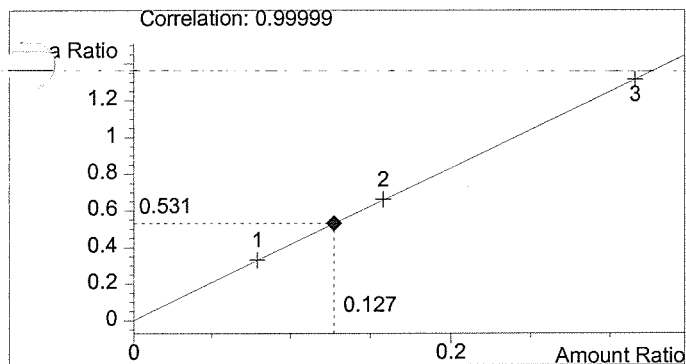
02010 QA SOLN
 WP MARSHALL

vial # 36

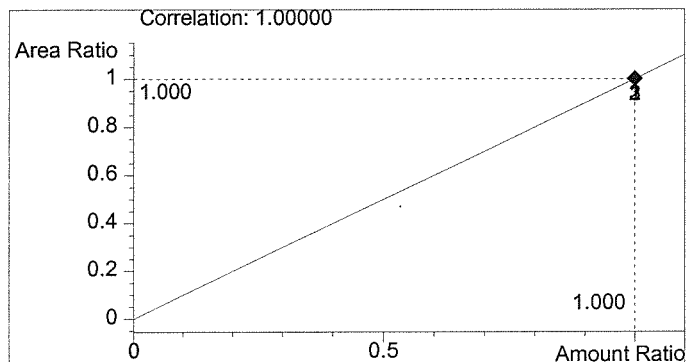


#	Compound	Area	RT
1	Ethanol	2316	1.043
2	n-Propanol	4366	1.701

Totals:



Ethanol 0.127 g/100ml

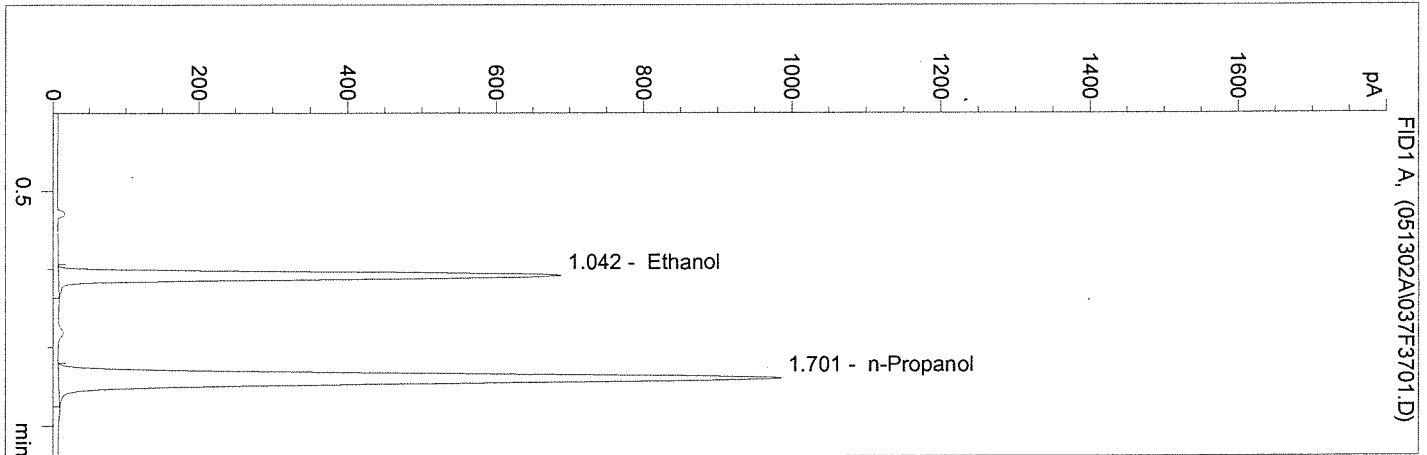


n-Propanol 1.000 g/100ml

C:\HPCHEM\1\METHODS\BLDALCO.M
 5/13/02 11:30:38 AM
 Instrument 1
 -ALC1

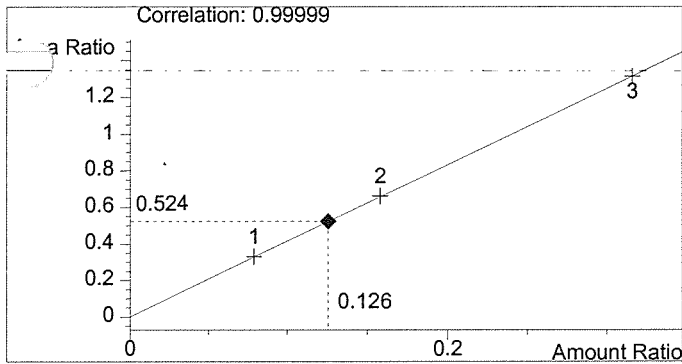
02010 QA SOLN
 WP MARSHALL

vial # 37

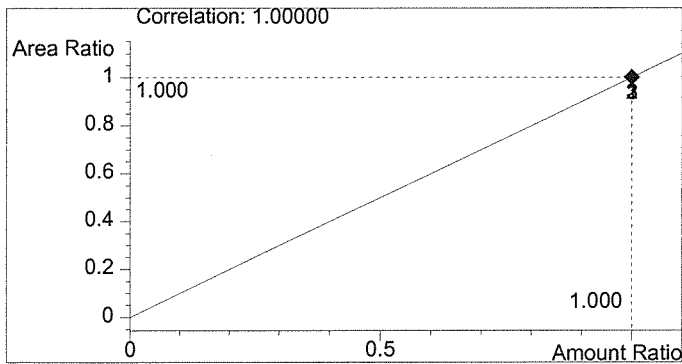


#	Compound	Area	RT
1	Ethanol	2206	1.042
2	n-Propanol	4205	1.701

Totals:



Ethanol 0.126 g/100ml

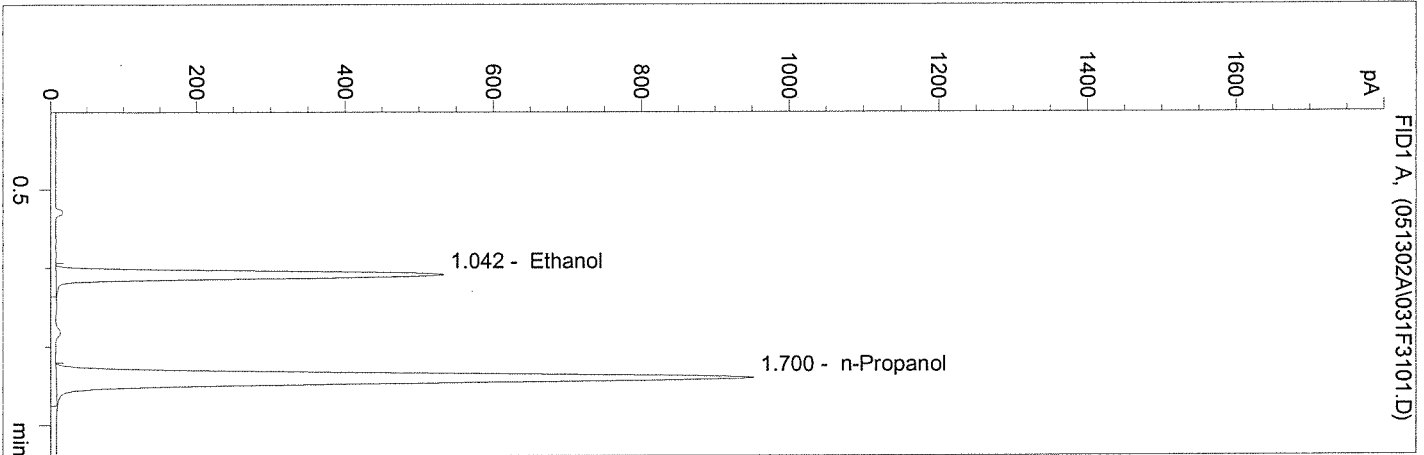


n-Propanol 1.000 g/100ml

C:\HPCHEM\1\METHODS\BLDALCO.M
 5/13/02 11:12:07 AM
 Instrument 1
 T-ALC1

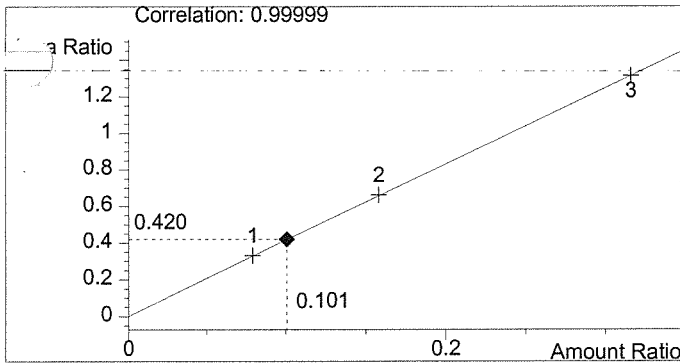
CONT 0.100 WPM
 WP MARSHALL

vial # 31

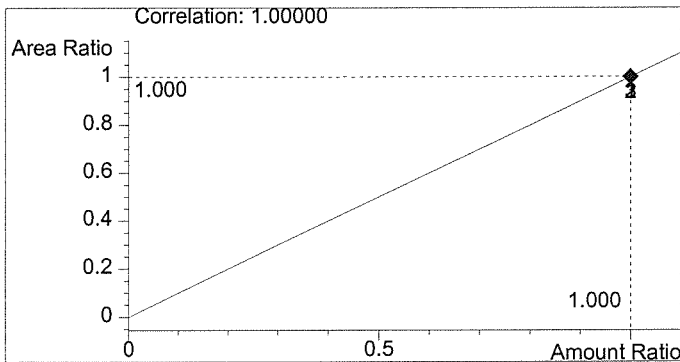


#	Compound	Area	RT
1	Ethanol	1707	1.042
2	n-Propanol	4068	1.700

Totals:



Ethanol 0.101 g/100ml

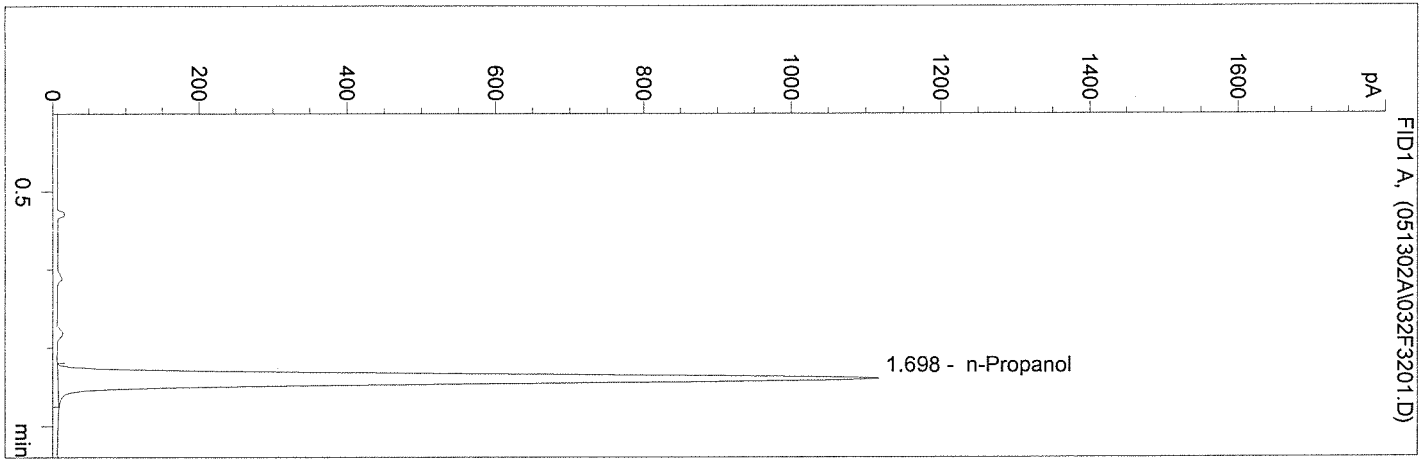


n-Propanol 1.000 g/100ml

C:\HPCHEM\1\METHODS\BLDALCO.M
5/13/02 11:15:10 AM
Instrument 1
FID1-ALC1

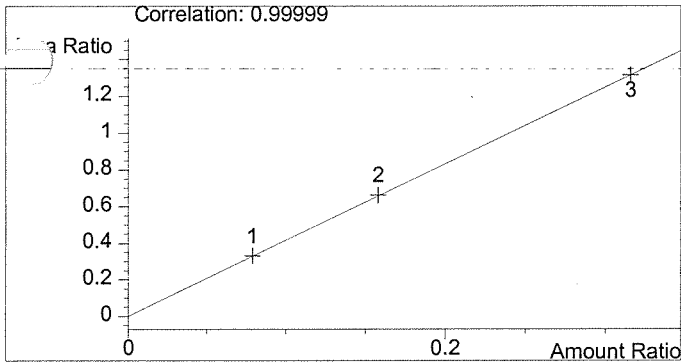
BLANK
WP MARSHALL

vial # 32

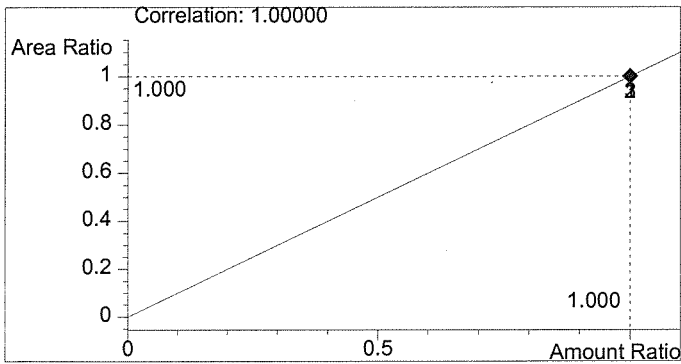


#	Compound	Area	RT
1	Ethanol	0	0.000
2	n-Propanol	4696	1.698

Totals:



Ethanol 0.000 g/100ml



n-Propanol 1.000 g/100ml