



STATE OF WASHINGTON

**STATE BUILDING CODE COUNCIL**

1500 Jefferson Street SE • P.O. Box 41449 • Olympia, Washington 98504  
(360) 407-9277 • e-mail [sbcc@des.wa.gov](mailto:sbcc@des.wa.gov) • [www.sbcc.wa.gov](http://www.sbcc.wa.gov)

**TO:** Energy Code Technical Advisory Group Members and  
All Interested Parties

**FROM:** Duane Jonlin, TAG Chair

**SUBJECT:** **ENERGY CODE TAG MEETING**

**LOCATION:** **Tacoma Public Utilities**      **For Teleconference Option:**  
Room ABN G1 (Main Bldg.,      (360) 407-3780, PIN 387898#  
Ground Floor)  
3628 South 35<sup>th</sup> Street      **For WebEx Option: [Click This Link](#)**  
Tacoma, WA 98409      (Password: 2018WSEC-C,  
**(See attached maps)**      Meeting #: 801 227 582)

**DATE:** **Friday, January 5, 2018**

**TIME:** **10:00 a.m. – 2:00 p.m.**  
(Please bring a sack lunch)

**AGENDA**

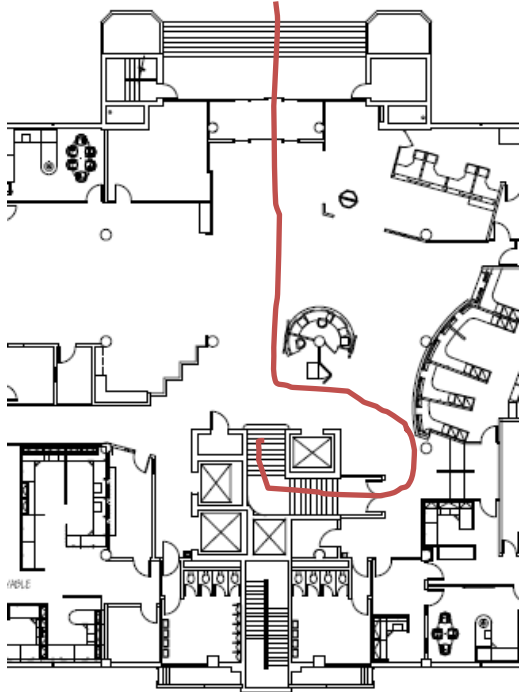
1. Welcome and Introductions
2. Review and Approve Agenda
3. Timeline and Outline of the New 2018 Adoption Process and Expectations
4. Introduction and Review of Integrated Draft 2015 WSEC – Commercial
5. Set 2015 Meeting Schedule
6. Adjourn

Public Comment allowed on each agenda item  
See TAG website for copies of referenced documents:  
<https://fortress.wa.gov/ga/apps/sbcc/Page.aspx?nid=116>

If additional information is needed, please contact TAG staff, Krista Braaksma at (360) 407-9278. This meeting location is accessible. Sign language interpreter service, assistive listening services, and communication materials in alternative formats including Braille, large print, and audio tape are available on advance request by calling the above numbers.

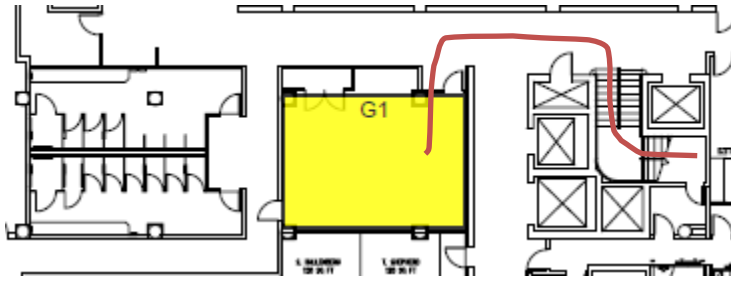
# Entrance off 35<sup>th</sup> St

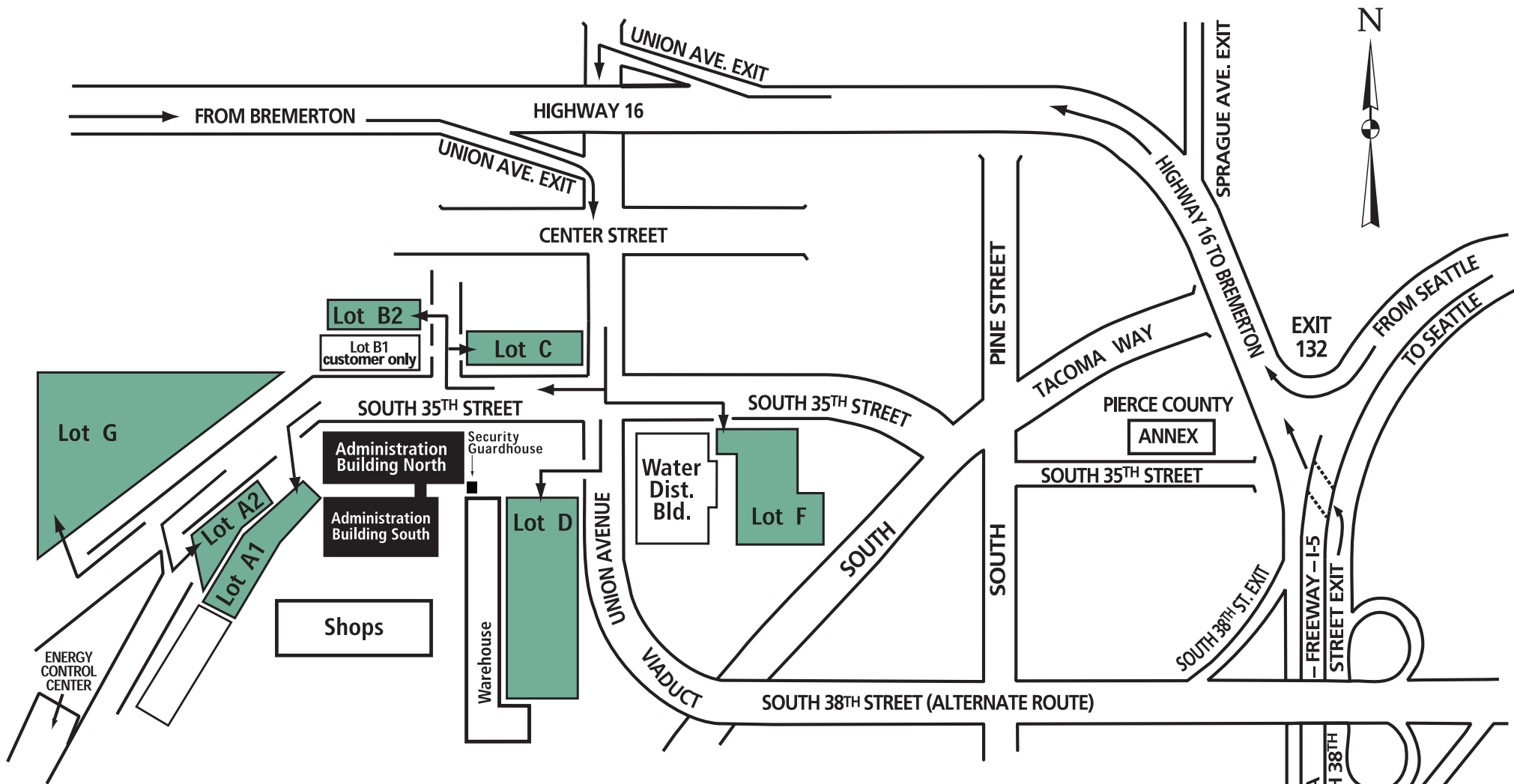
Main Floor



Sometimes the security desk wants to provide visitor badges to everyone. If attendees state they are going to the publically accessible conference room (G1) near the cafeteria, there shouldn't be an issue with badging.

Ground Floor





Visitor parking permitted in all shaded areas and on street where not otherwise signed or prohibited. Visitor parking lots include A1, A2, B2, C, D, F and G.

**Lot B1 is reserved for customers only. TAG Member parking is not allowed in Lot B1.**  
**Lot G normally has the most availability.**



**3628 South 35th Street  
 Tacoma, WA 98409 • 253-502-8000**

**DIRECTIONS -**

From I-5 take Highway 16 exit (exit 132).  
 Take Union Avenue exit off of Highway 16.  
 Head south on Union Avenue.  
 Turn right on South 35th Street.