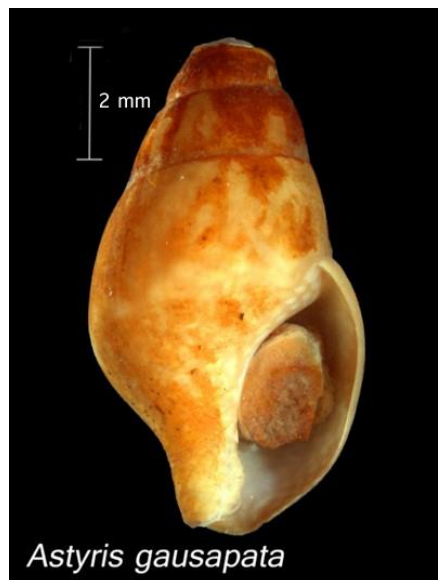


Astyrus gausapata (Gould, 1850)

| Nomenclature | |
|--|---|
| Phylum | Mollusca |
| Class | Gastropoda |
| Order | Neogastropoda |
| Family | Columbellidae |
| Common Synonyms (S) Previous Names (PN) | <i>Columbella gausapata</i> , <i>Mitrella gausapata</i> , <i>Alia</i> <i>gausapata</i> , <i>Alia</i> <i>casciana</i> , <i>Columbella</i> <i>dalli</i> , <i>Mitrella gouldi</i> , <i>Nitidella gausapata</i> , <i>Nitidella gouldii</i> , <i>Nitidella</i> <i>lutulenta</i> |



| Distribution | |
|-------------------------|--|
| Type Locality | |
| Geographic Distribution | Southern Alaska to Baja California (55°N - 33°N) |

| Description |
|--|
| Length to 13mm; protoconch paucispiral and usually eroded in mature specimens; shape oval-fusiform; spire elevated; apex acute; whorls slightly convex; body-whorl ventricose; suture depressed, distinct; shell thick; periostracum with brown adherent; sculpture smooth except for microscopic axial striations, incised spiral grooves limited to base and canal of shell; color highly variable, yellowish-brown and often with white and darker colored maculations; aperture elongate-ovate and thickened; columella recurved with faint spiral grooves; canal prominent, slightly curved; outer lip thickened, sinuous posteriorly, weakly lirate within (on adult specimens); inner lip smooth, not callous |

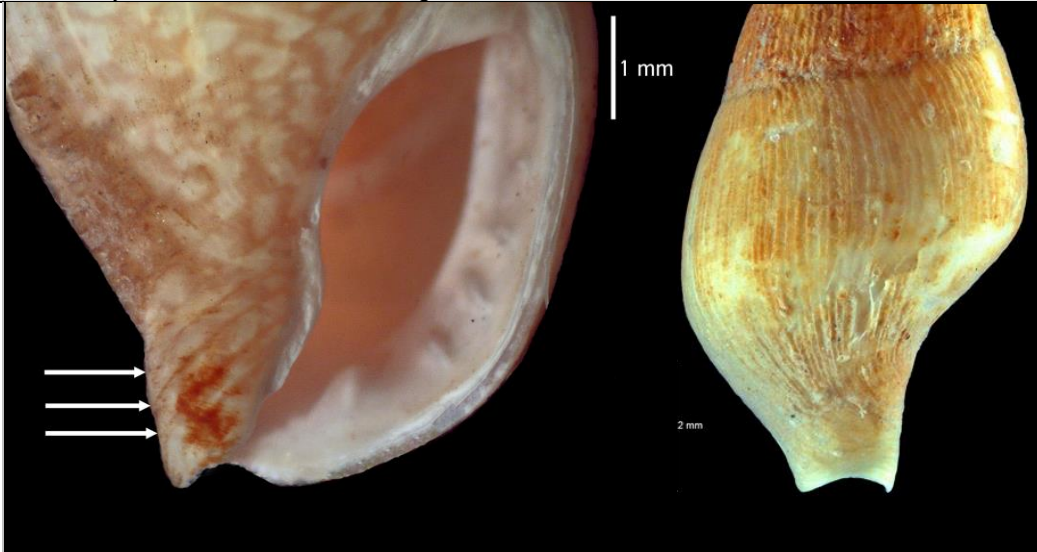
| Related Species and Characteristic Differences | |
|--|--|
| Species Name | Diagnostic Characteristics |
| <i>Alia carinata</i> | Shoulder of last whorl usually strongly swollen; outer lip strongly lirate with about a dozen denticles; sculpture smooth and lacking weak axial striations; multispiral protoconch usually eroded in mature specimens |

Diagnostic Characteristics

Diagnostic Characteristics

Photos by Marine Sediment Monitoring Team

outer lip weakly lirate in adult specimens
incised spiral grooves on canal; sculpture lacking except for microscopic axial striations



Literature

- Abbott, R. Tucker, Ph.D. 1974. *American Seashells The Marine Mollusca of the Atlantic and Pacific Coasts of North America*. Second Edition. Van Nostrand Reinhold. pp. 198-199.
- Gould, A.A. 1850. [Shells collected by the United States Exploring Expedition under the command of Charles Wilkes]. *Proceedings of the Boston Society of Natural History* 3:169-172.
- Harbo, R.M. 1997. *Shells & Shellfish of the Pacific Northwest A Field Guide*. Madeira Park, BC: Harbor Publishing. pp. 97, 216.
- McLean, J.H. 1996. The Prosobranchia. In: Scott, P.H., Blake, J.A., Lissner, A.L. Eds. *Taxonomic Atlas of the Benthic Fauna of the Santa Maria Basin and Western Santa Barbara Channel*. Volume 9. ISBN 0-93649-14-X. Santa Barbara: Santa Barbara Museum of Natural History. The Mollusca Part 2 The Gastropoda. pp.108-110.

More Information

More information about Puget Sound benthic invertebrates is available at:
<http://www.ecy.wa.gov/programs/eap/psamp/index.htm/>.

Prepared by Angela Eagleston (Ecology); reviewed by Susan Weeks (Oikos). This document is available on the Department of Ecology's website at <https://fortress.wa.gov/ecy/publications/SummaryPages/1703301.html>

If you need this document in a format for the visually impaired, call (360) 407-6764. Persons with hearing loss can call 711 for Washington Relay Service. Persons with a speech disability can call (877) 833-6341.