

**WASTE TREATMENT AND IMMOBILIZATION PLANT
CHAPTER 2.0
TOPOGRAPHIC MAP
CHANGE CONTROL LOG**

Change Control Logs ensure that changes to this unit are performed in a methodical, controlled, coordinated, and transparent manner. Each unit addendum will have its own change control log with a modification history table. The “**Modification Number**” represents Ecology’s method for tracking the different versions of the permit. This log will serve as an up to date record of modifications and version history of the unit.

Modification History Table

Modification Date	Modification Number
10/23/2025	24590-WTP-PCN-ENV-25-001 (8C.2025.Q4)
09/05/2017	8C.2017.6F

This page intentionally left blank.

1
2
3
4

CHAPTER 2.0
TOPOGRAPHIC MAP

1
2
3
4
5

This page intentionally left blank.

CHAPTER 2.0
TOPOGRAPHIC MAP

1
2
3
4
5
6
7
8
9
10
11
12
13
14

TABLE OF CONTENTS

2.0 Topographic Map 5

FIGURES

Figure 2A-1 Dangerous Waste Permit Waste Treatment Plant Site Vicinity Map 7
Figure 2A-2 Waste Treatment Plant Site Topography Map 8
Figure 2A-3 Dangerous Waste Permit Waste Treatment Plant Site Map 9

1
2
3
4
5

This page intentionally left blank.

1 **2.0 TOPOGRAPHIC MAP**

2 This chapter contains the Waste Treatment Plant topographic map, which meets the Waste Treatment
3 Plant Dangerous Waste Permit Application requirements as detailed in WAC 173-303-806(4)(a)(xviii).
4 The official version of the topographic map is located at the Ecology Richland office.
5

1
2
3
4
5

This page intentionally left blank.

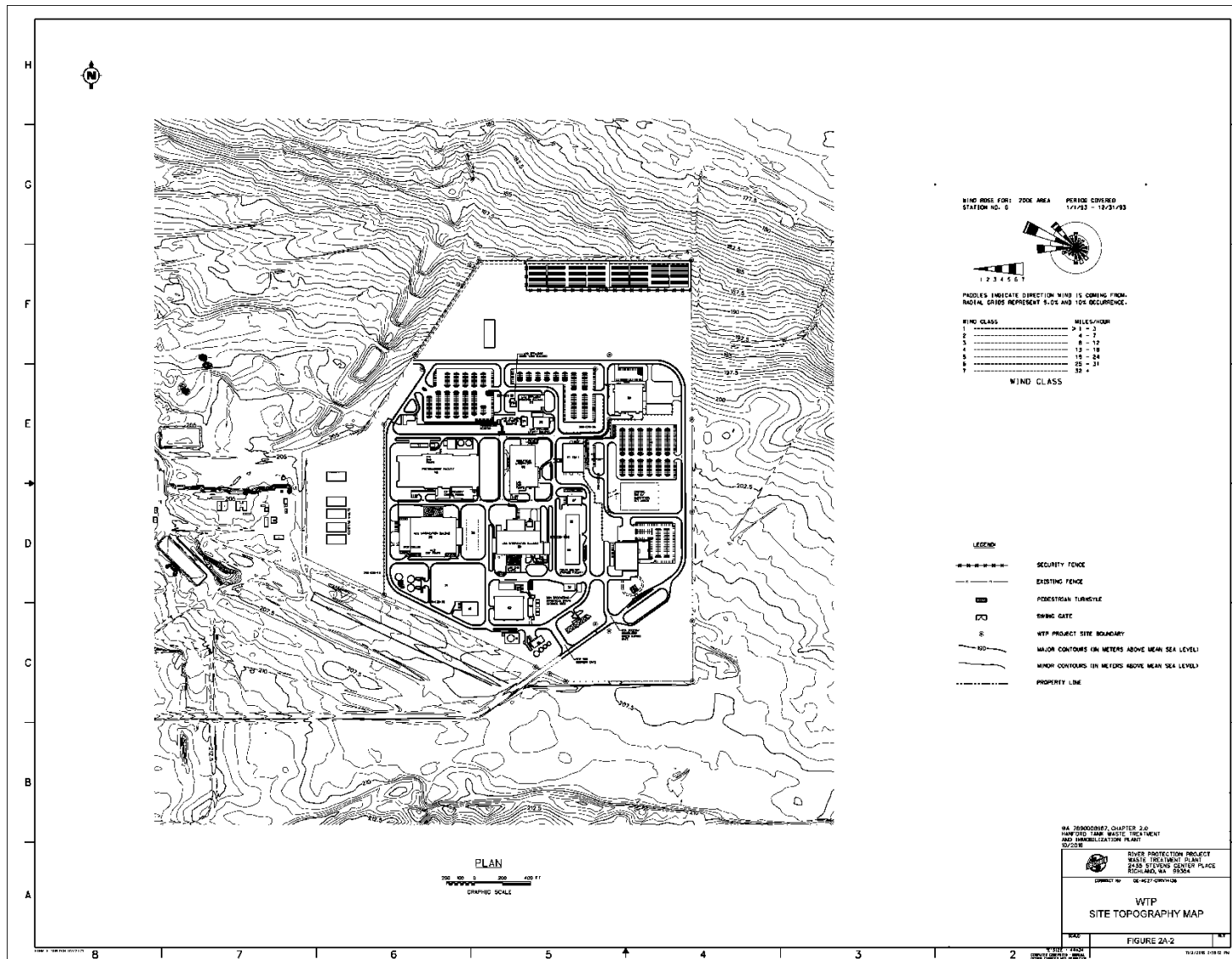


Figure 2A-2 Waste Treatment Plant Site Topography Map

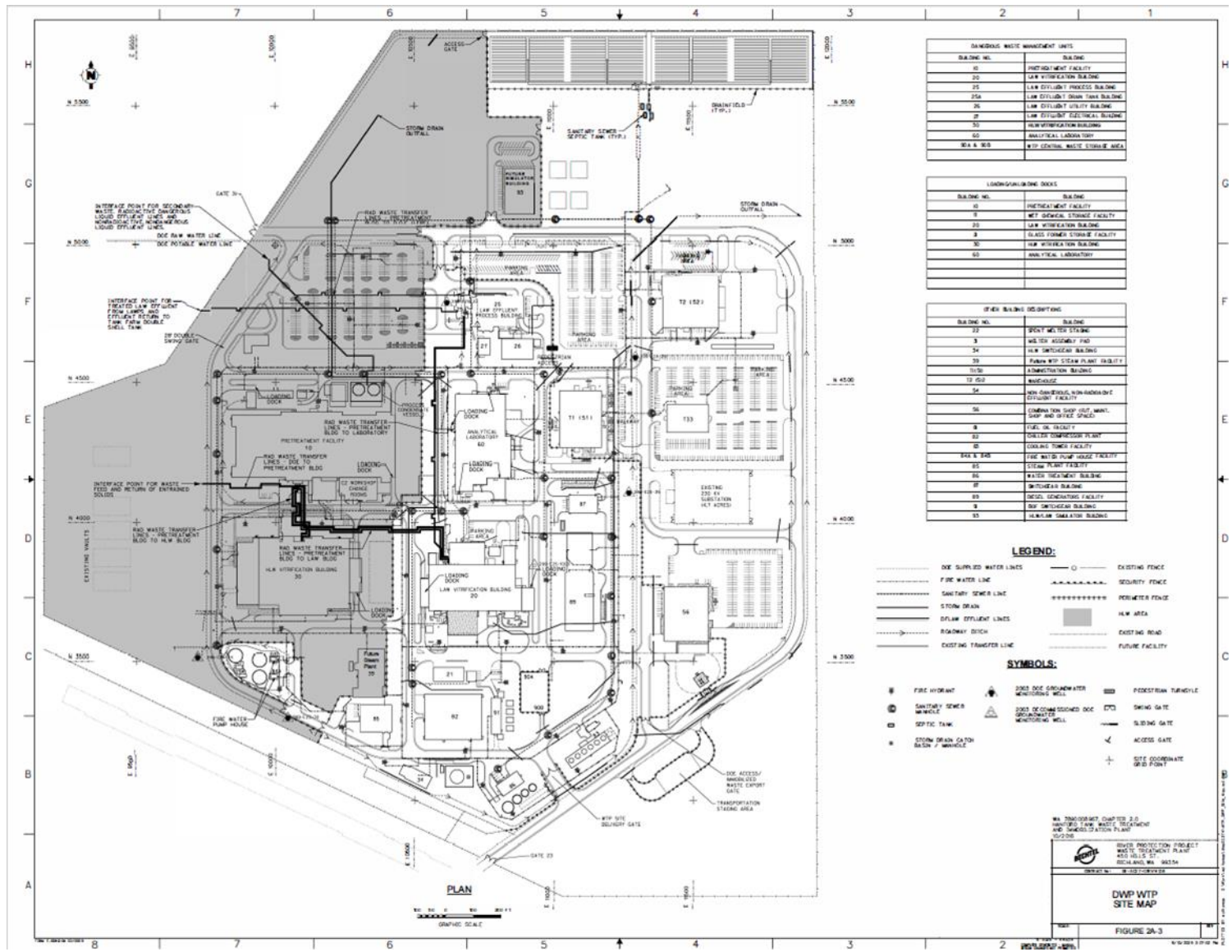


Figure 2A-3 Dangerous Waste Permit Waste Treatment Plant Site Map

1
2
3
4
5

This page intentionally left blank.