

**2401-W WASTE STORAGE BUILDING  
ADDENDUM H  
CLOSURE PLAN  
CHANGE CONTROL LOG**

Change Control Logs ensure that changes to this unit are performed in a methodical, controlled, coordinated, and transparent manner. Each unit addendum will have its own change control log with a modification history table. The “**Modification Number**” represents Ecology’s method for tracking the different versions of the permit. This log will serve as an up to date record of modifications and version history of the unit.

Modification History Table

<b>Modification Date</b>	<b>Modification Number</b>
02/03/2026	PCN-2401WWSB-2025-02 (8C.2026.Q1)
03/10/2025	PCN-2401WWSB-2025-01 (8C.2025.Q1)
03/13/2024	PCN-2401WWSB-2024-01 (8C.2024.Q1)
08/17/2023	8C.2023.3F
12/06/2021	8C.2021.1F

This page intentionally left blank.

1  
2  
3  
4  
5  
6

**2401-W WASTE STORAGE BUILDING  
ADDENDUM H  
CLOSURE PLAN**

1  
2  
3  
4  
5

This page intentionally left blank.

**ADDENDUM H  
CLOSURE PLAN**

1  
2  
3  
4  
5  
6 **TABLE OF CONTENTS**

7	H.1	Introduction .....	9
8	H.1.1	Unit Description .....	10
9	H.1.2	Maximum Waste Inventory .....	13
10	H.1.3	Personnel Safety and Training Requirements .....	13
11	H.1.3.1	Health and Safety Requirements .....	13
12	H.1.3.2	Training Requirements .....	13
13	H.1.4	Maintenance and Security During Closure .....	14
14	H.1.4.1	Inspections.....	14
15	H.1.4.2	Facility Security .....	15
16	H.1.4.3	Preparedness, Prevention, Emergency Procedures.....	15
17	H.1.4.4	Facility Recordkeeping.....	16
18	H.2	Closure Performance Standards .....	16
19	H.3	Closure Activities .....	16
20	H.3.1	Removal of Wastes and Waste Residues .....	17
21	H.3.2	Operating Records Review and Visual Inspection .....	17
22	H.3.3	Unit Components, Parts, and Ancillary Equipment .....	19
23	H.3.4	Inspection of Unit Before Decontamination .....	19
24	H.3.5	Decontamination .....	19
25	H.3.6	Identifying and Managing Contaminated Environmental Media.....	20
26	H.3.7	Identifying and Managing Waste Generated During Closure .....	20
27	H.3.8	Closure Performance Standards for Concrete and Soil.....	20
28	H.3.8.1	Closure Performance Standards for Concrete .....	21
29	H.3.8.2	Closure Performance Standards for Soil .....	21
30	H.3.9	Development of Closure Performance Standards for Soil .....	22
31	H.3.10	Conditions That Will be Achieved When Closure is Complete .....	29
32	H.4	Sampling and Analysis Plan .....	29
33	H.4.1	Sampling and Analysis Plan Requirements.....	29
34	H.4.2	Sampling and Analysis Schedule .....	29
35	H.4.3	Project Management.....	29
36	H.4.3.1	Project/Task Organization .....	29

1	H.4.3.2	Field Sampler Training/Certification.....	31
2	H.4.3.3	Sampling Documents and Records.....	31
3	H.4.4	Sampling Design and Analysis.....	32
4	H.4.4.1	Sampling Process Design .....	32
5	H.4.4.2	Sampling Methods and Handling .....	34
6	H.4.4.3	Sampling and Analysis Requirements to Address Removal of Contaminated Soil .....	36
7	H.4.4.4	Analytical Methods .....	36
8	H.4.4.5	Quality Control.....	36
9	H.4.5	Data Review, Verification, Validation, and Usability Requirements.....	38
10	H.4.5.1	Data Verification.....	38
11	H.4.5.2	Data Validation .....	38
12	H.4.5.3	Data Quality Assessment.....	38
13	H.4.6	Revisions to the Sampling and Analysis Plan and Constituents to be Analyzed .....	38
14	H.5	Confirmation and Certification of Closure Activities .....	38
15	H.5.1	Confirmation of Clean Closure .....	39
16	H.5.1.1	Confirmation of Clean Debris Surface.....	39
17	H.5.1.2	Confirmation of Soil Sample Results .....	39
18	H.5.2	Role of the Independent Qualified Registered Professional Engineer .....	39
19	H.5.3	Closure Certification .....	40
20	H.6	Closure Schedule and Time Frame.....	40
21	H.7	Closure Costs.....	42
22	H.8	References .....	43
23			
24	<b>TABLES</b>		
25	Table H-1	Training Matrix for the 2401-W Building Dangerous Waste Management Unit .....	14
26	Table H-2	2401-W Building Inspection Schedule.....	14
27	Table H-3	Operating Records Review Summary .....	18
28	Table H-4	Mixed Waste Container Data.....	18
29	Table H-5	Closure Performance Standards for Soil and Analytical Performance Requirements.....	23
30	Table H-6	Preservation, Container, and Holding Time Requirements for Soil Samples.....	34
31	Table H-7	Project Quality Control Sampling Summary .....	37
32	Table H-8	2401-W Waste Storage Building Dangerous Waste Management Unit Closure	
33		Schedule.....	41
34			

1 **FIGURES**

2 Figure H-1 Central Waste Complex-Waste Receiving and Processing Complex Overview,  
3 2401-W Building Dangerous Waste Management Unit (Month Unknown, 2017)..... 10  
4 Figure H-2 Dimensions of 2401-W Building ..... 11  
5 Figure H-3 2401-W Building (East) (February 2018)..... 11  
6 Figure H-4 2401-W Waste Storage Building Interior View (Center) (February 2018)..... 12  
7 Figure H-5 Overhead View of 2401-W Building (East) (October 2017) ..... 12  
8 Figure H-6 Sampling and Analysis Plan Project Organization..... 31  
9 Figure H-7 Sampling Locations..... 33  
10 Figure H-8 2401-W Building Closure Schedule Activities ..... 42

11

12 **ATTACHMENTS**

13 Attachment A CWC 2401-W Building Visual Inspection Documentation..... H.A.i

14

15

1  
2  
3  
4  
5

This page intentionally left blank.

1

**TERMS**

ASTM	American Society for Testing and Materials
CAA	Central Accumulation Area
CFR	Code of Federal Regulations
COC	Chain-of-Custody
CPCCo	Central Plateau Cleanup Company, LLC
CWC-WRAP	Central Waste Complex-Waste Receiving and Processing
DOE	U.S. Department of Energy
DOE-RL	U.S. Department of Energy, Richland Operations Office
DQA	Data Quality Assessment
DQO	Data Quality Objectives
DWMU	Dangerous Waste Management Unit
Ecology	Washington State Department of Ecology
EPA	U.S. Environmental Protection Agency
FWS	Field Work Supervisor
HEIS	Hanford Environmental Information System
HHE	Human Health and the Environment
HWMA	Hazardous Waste Management Act (Revised Code of Washington [RCW] 70A.300, Washington Administrative Code [WAC] 173-303)
IQRPE	Independent Qualified Registered Professional Engineer
MTCA	Model Toxics Control Act—Cleanup (RCW 70A.305, WAC 173-340)
PQL	Practical Quantitation Limit
QA	Quality Assurance
QC	Quality Control
RCRA	<i>Resource Conservation and Recovery Act of 1976</i>
RCW	Revised Code of Washington
SAA	Satellite Accumulation Area
SAP	Sampling and Analysis Plan
SWOC	Solid Waste Operations Complex
VOA	Volatile Organic Analysis
WAC	Washington Administrative Code

2

1  
2  
3  
4  
5

This page intentionally left blank.

## 1 H.1 INTRODUCTION

2 The purpose of this plan is to describe the *Resource Conservation and Recovery Act of 1976*  
3 (RCRA)/Hazardous Waste Management Act (HWMA), Chapter 70A.300 Revised Code of Washington  
4 (RCW) closure process for the 2401-W Waste Storage Building Dangerous Waste Management Unit  
5 (DWMU), hereinafter called the 2401-W Building. The 2401-W Building is located in the southeastern  
6 portion of the Central Waste Complex (CWC)-Waste Receiving and Processing (WRAP) Complex in the  
7 200 West Area of the Hanford Site (Figure H-1). The U.S. Department of Energy (DOE), Richland  
8 Operations Office (RL) and Central Plateau Cleanup Company, LLC (CPCCo), hereinafter called the  
9 Permittees, have agreed with the U.S. Environmental Protection Agency (EPA) and Washington State  
10 Department of Ecology (Ecology) through a Consent Agreement and Final Order (EPA Docket No.  
11 RCRA-10-2013-0113) to close this DWMU. The DOE-RL and CPCCo appealed the seven Solid Waste  
12 Operations Complex (SWOC) closure plans shortly after they were issued in December of 2021. This  
13 closure plan is one of the seven that were part of the appeal. Ecology met with DOE-RL and CPCCo to  
14 resolve the appeal issues through mediation. A Settlement Agreement was reached in October 2022  
15 (Pollution Control Hearings Board [PCHB] No. 22-001). This closure plan is revised to reflect changes  
16 agreed to in that Settlement Agreement. The 2401-W Building is no longer used for storage of dangerous  
17 or mixed waste and will be clean closed.

18 This closure plan complies with closure requirements in Washington Administrative Code  
19 (WAC) 173-303-610(2) through WAC 173-303-610(6), *Closure and post-closure*, and WAC 173-303-  
20 630(10), *Use and management of containers*.

21 Amendments to this closure plan must be submitted as a permit modification request in accordance with  
22 Permit Condition I.C.3.

23 Minor deviations from this closure plan must be addressed in accordance with Permit Condition II.K.6  
24 and Unit-Specific Permit Condition V.39.B.2.

25 Closure requirements are based on RCW 70A.300, WAC 173-303, and Ecology guidance  
26 (Ecology Publication #94-111, *Guidance for Clean Closure of Dangerous Waste Units and Facilities*).  
27 This closure plan is also designed to fulfill the elements of the Data Quality Objectives (DQO) Process, as  
28 defined in EPA Publication EPA/240/B-06/001, *Guidance on Systematic Planning Using the Data Quality*  
29 *Objective Process* (EPA QA/G-4). A site-specific DQO has been incorporated into this closure plan.

30 This closure plan describes in detail the closure activities necessary to achieve closure performance  
31 standards for the 2401-W Building. Closure activities include:

- 32 • Removal of all dangerous and mixed waste.
- 33 • Records review (i.e., container storage, operating, and inspection records) for documented spills  
34 or releases of dangerous or mixed waste and subsequent cleanup activities.
- 35 • Visual inspection to evaluate the condition of the floor surfaces and the likelihood of potential  
36 exposure pathways for contamination of the underlying soil.
- 37 • Decontaminate the concrete surface to meet the “Alternative Treatment Standards for Hazardous  
38 Debris” 40 Code of Federal Regulations (CFR) § 268.45, Table 1, footnote 3. Decontamination  
39 will remove at least 0.6 cm (~1/4 in.) of the surface layer and treat to a “clean debris surface.”
- 40 • Visual inspection to confirm a “clean debris surface” standard has been met.
- 41 • Sampling of underlying soil to evaluate whether closure performance standards are met.
- 42 • Transmit closure certification to Ecology.

43 Closure will be performed in accordance with the schedule provided in Section H.6.



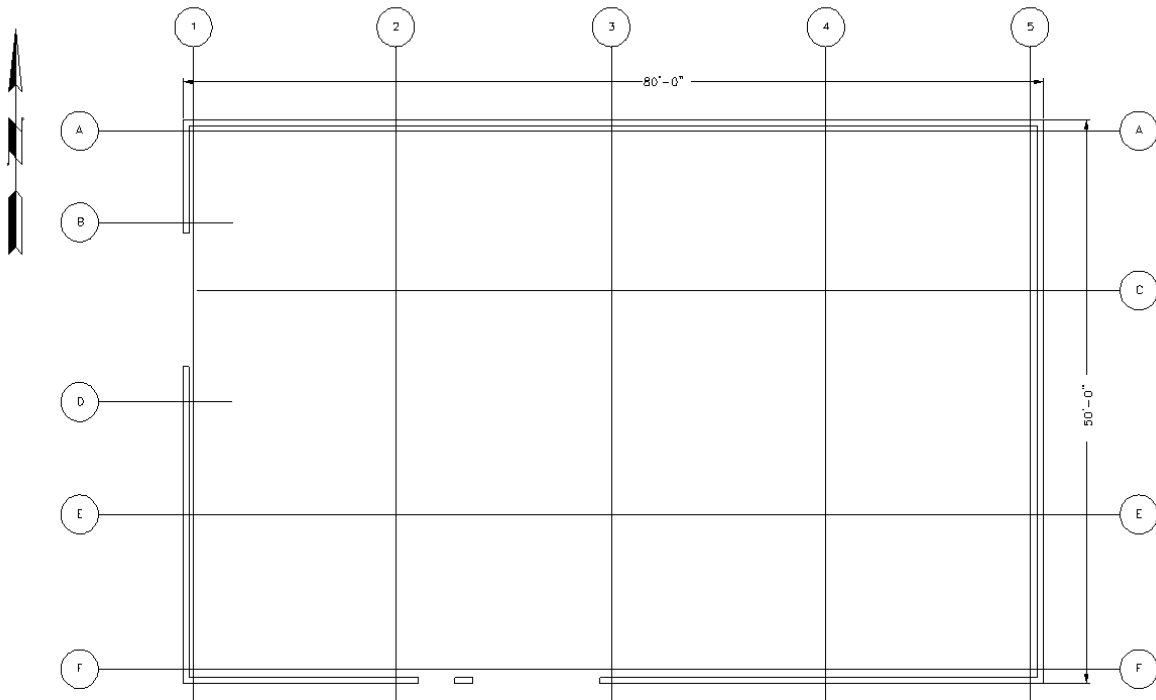
1 **Figure H-1 Central Waste Complex-Waste Receiving and Processing Complex Overview,**  
2 **2401-W Building Dangerous Waste Management Unit (Month Unknown, 2017)**  
3

4 **H.1.1 Unit Description**

5 The 2401-W Building is located on the south end of the CWC.

6 The 2401-W Building is a pre-engineered steel structure. It is approximately 15 m (50 ft) wide by 24 m  
7 (80 ft) long by 6 m (20 ft) high (to the eave). The foundation is integrated into a perimeter concrete curb  
8 15.2 cm (6 in.) above grade. Ramps were placed across the curb for loading and unloading operations.  
9 The floors were coated with an epoxy resin floor surfacing system that was compatible with the stored  
10 waste. Figure H-2 shows the general dimensions and layout of the 2401-W Building, and provides  
11 perspective for the pictures of this area that follow. Figure H-3 shows the 2401-W Building from west  
12 side of the building. Figure H-4 shows the interior of the 2401-W Building from the south. Figure H-5  
13 shows an overhead view of the 2401-W Building.

14 The 2401-W Building does not currently store dangerous or mixed waste. Future dangerous waste  
15 container storage and treatment of dangerous and mixed waste within the 2401-W Building is not  
16 authorized. Currently it primarily serves as equipment and material storage, as well as recyclable and  
17 universal waste storage to support the CWC-WRAP operational activities.



2401W FLOOR PLAN

Figure H-2 Dimensions of 2401-W Building

1  
2



Figure H-3 2401-W Building (East) (February 2018)

3



1  
2

**Figure H-4 2401-W Waste Storage Building Interior View (Center) (February 2018)**



3

**Figure H-5 Overhead View of 2401-W Building (East) (October 2017)**

1 **H.1.2 Maximum Waste Inventory**

2 Waste management records indicate that the maximum inventory of dangerous and mixed waste stored in  
3 the 2401-W Building over its lifetime included 318 containers with a total volume of 203 m<sup>3</sup> (266 yd<sup>3</sup>).  
4 Dangerous waste was first stored in 2401-W Building in May 1989. The 2401-W Building also stored  
5 dangerous and mixed waste in a Central Accumulation Area (CAA). Details on the dangerous and mixed  
6 waste containers are presented in Section H.3.2.

7 **H.1.3 Personnel Safety and Training Requirements**

8 Closure will be performed in a manner to ensure the safety of Human Health and the Environment (HHE).  
9 Health and safety requirements are addressed in Section H.1.3.1, and training for facility and closure  
10 personnel is described in Section H.1.3.2.

11 **H.1.3.1 Health and Safety Requirements**

12 Personnel will be trained in the applicable safety and environmental procedures described in Table H-1.  
13 Personnel will be equipped with appropriate personal protective equipment. Personnel will perform all  
14 field operations and any necessary closure activities in compliance with applicable health, safety, and  
15 environmental procedures and requirements.

16 Pre-job briefings will be performed to evaluate activities and associated hazards by considering the  
17 following factors:

- 18 • Objective of the activities.
- 19 • Individual tasks to be performed.
- 20 • Hazards associated with the planned tasks.
- 21 • Environment in which the job will be performed.
- 22 • Facility where the job will be performed.
- 23 • Equipment and material required.
- 24 • Safety protocols applicable to the job.
- 25 • Training requirements for individuals assigned to perform the work.
- 26 • Level of management control.
- 27 • Proximity of emergency contacts.

28 **H.1.3.2 Training Requirements**

29 The Permittees have instituted training and qualification programs to meet training requirements imposed  
30 by regulations, DOE orders, and national standards such as those published by the American National  
31 Standards Institute/American Society of Mechanical Engineers. For example, the environmental, safety,  
32 and health training program provides workers with the knowledge and skills necessary to execute  
33 assigned duties safely. Permit Attachment 5, *Hanford Facility Personnel Training Program*, describes  
34 specific requirements for the Hanford Facility Personnel Training Program. The Permittees will comply  
35 with the training matrix shown in Table H-1, which provides training requirements for Hanford Facility  
36 personnel associated with the 2401-W Building.

37 Project-specific safety training will provide the knowledge and skills that personnel need to perform work  
38 safely and in accordance with Quality Assurance (QA) requirements. Training records are maintained for  
39 each employee in an electronic training record database. The Permittee's training organization maintains  
40 the training records system.

**Table H-1 Training Matrix for the 2401-W Building Dangerous Waste Management Unit**

Training Category Course Description <sup>a</sup>	Frequency of Training	Training Type <sup>b</sup>	Job Title/Position					
			Non-CWC Personnel or Visitor	FWS	SPOC	ECO	BED	FS
General Training	Annual	GHFT, CPT	X	X	X	X	X	X
Building Emergency	Annual	ECT					X	
ECO Training	Initial	OT				X		
Facility Health and Safety	Annual	GHFT, CPT	X <sup>c</sup>	X	X <sup>c</sup>	X	X	X <sup>c</sup>
Sampler	Annual	GHFT, CPT						X

<sup>a</sup>The CWC-WRAP Dangerous Waste Training Plan provides a complete description of coursework in each training category.

<sup>b</sup>Training types defined in Permit Attachment 5.

<sup>c</sup>This training is required only if workers are unescorted in the facility.

BED = Building Emergency Director

FWS = Field Work Supervisor

CPT = Contingency Plan Training

GHFT = General Hanford Facility Training

ECO = Environmental Compliance Officer

OT = Operations Training

ECT = Emergency Coordinator Training

SPOC = Single Point of Contact

FS = Field Sampler

1  
2  
3  
4  
5  
6  
7  
8  
9  
10

**H.1.4 Maintenance and Security During Closure**

To maintain the 2401-W Building in a compliant manner during closure, measures are taken to ensure inspections are performed, and security and emergency preparedness activities are in place.

**H.1.4.1 Inspections**

The 2401-W Building will be closed in a manner that demonstrates that all steps to prevent threats to HHE have been met and will continue to be taken. After closure activities have been completed, the 2401-W Building will be inspected annually until Ecology approves the unit closure certification.

Table H-2 shows annual inspection requirements that will be performed.

**Table H-2 2401-W Building Inspection Schedule**

Requirement Description	Frequency	DWMU Condition Inspection*
Signage	Annual	Warning signs are present and clearly legible.
Site – General	Annual	There is no evidence that unusual conditions exist at the closing DWMU site.

\*The storage area is empty of dangerous and mixed waste. “No waste in storage” or equivalent words will be entered on the inspection log.

1 **H.1.4.2 Facility Security**

2 The following sections document security measures in effect at the CWC-WRAP.

3 **H.1.4.2.1 Security Provisions**

4 Located within the 200 West Area of the Hanford Facility, CWC-WRAP complies with access control and  
5 warning sign requirements pursuant to WAC 173-303-310(1) and (2), *Security*.

6 Security measures are used to control access to the active portions of the Hanford Facility in accordance  
7 with Permit Condition II.M, *Security*.

8 The entire Hanford Facility is a controlled access area as described in Permit Attachment 3, *Security*. The  
9 security measures in Permit Attachment 3 and the unit-specific security measures prevent the unknowing  
10 entry, and minimize the possibility for the unauthorized entry, of persons or livestock. [WAC 173-303-  
11 310(1)]

12 **H.1.4.2.2 Central Waste Complex-Waste Receiving and Processing Access Control**

13 Unknowing entry and the possibility for unauthorized entry of persons or livestock onto the active  
14 portions of the CWC-WRAP are minimized through implementation and maintenance of the following  
15 security measures.

16 Access to CWC-WRAP DWMUs is controlled by an approximate 2.1 m (7 ft) high chain link fence  
17 encircling the CWC-WRAP perimeter (Figure H-1). Alternate vehicle entry gates at points in the  
18 perimeter fence are either locked or, when open for operations, subject to surveillance by CWC-WRAP  
19 personnel. Authorization clearance for all entrants to the CWC-WRAP is required. During non-operations  
20 hours, the main gate is locked. Gate keys are controlled and accessible by authorized personnel only.  
21 [WAC 173-303-310(2)(c)]

22 Visitors to the CWC-WRAP are required to sign in and adhere to all personal protection requirements,  
23 and are subject to escorting protocols.

24 Section H.1.3.2 provides the personnel training requirements for CWC-WRAP operators, workers, and  
25 visitors.

26 Access to the 2401-W Waste Storage Building is restricted by the CWC-WRAP access controls described  
27 above.

28 **H.1.4.2.3 Warning Signs**

29 Warning signs stating “Danger-Unauthorized Personnel Keep Out” are posted near the entrance gate of  
30 the CWC-WRAP. Identical signs are posted along the perimeter fence lines at distances not to exceed  
31 250 ft (76.2 meters) between signs. Permittees must maintain warning signs at points described in this  
32 closure plan and ensure that signs are written in English, legible from a distance of 25 ft  
33 (approximately 7.6 m) or more, and visible from all angles of approach. [WAC 173-303-310(2)(a)]

34 **H.1.4.3 Preparedness, Prevention, Emergency Procedures**

35 The CWC preparedness, prevention, and emergency procedures are described in the following  
36 subsections. Contingency information is contained in the Building Emergency Plan for CWC, as well as  
37 Permit Attachment 4, *Hanford Emergency Management Plan*. Note: The WRAP has a separate building  
38 emergency plan from the CWC.

1 **H.1.4.3.1 Central Waste Complex Building Emergency Plan**

2 CWC is within the Hanford Facility. The Building Emergency Plan for CWC describes facility-specific  
3 hazards and emergency planning and response. This site-specific plan is intended to be used in  
4 conjunction with Permit Attachment 4, *Hanford Emergency Management Plan*. If an emergency occurs,  
5 the on-call Building Emergency Director will be notified, and the requirements associated with Permit  
6 Attachment 4, *Hanford Emergency Management Plan*, and the CWC Building Emergency Plan will be  
7 implemented. A copy of the CWC Building Emergency Plan is kept in the operating record.

8 **H.1.4.3.2 Hanford Emergency Management Plan**

9 Permit Attachment 4, *Hanford Emergency Management Plan*, addresses site emergency management and  
10 contingency plan requirements for the Hanford Facility.

11 **H.1.4.4 Facility Recordkeeping**

12 Historical records that describe dangerous and mixed waste management activities within the  
13 2401-W Building are retained in the operating record, which ensures proper availability and retention  
14 periods. These records describe the source of the chemicals, quantity, and hazards associated with the  
15 chemicals.

16 Records will be stored in either electronic or hardcopy format. Documentation and records, regardless of  
17 medium or format, are controlled in accordance with internal work requirements and processes to ensure  
18 the accuracy and retrievability of stored records. Records generated during closure will be maintained in  
19 the operating record in accordance with Permit Condition II.I.

20 **H.2 CLOSURE PERFORMANCE STANDARDS**

21 The 2401-W Building will be closed in a manner that complies with the closure performance standards in  
22 WAC 173-303-610(2)(a) and (b) and, therefore, achieves clean closure. The objectives of closure  
23 activities for the 2401-W Building are as follows:

- 24 • Minimize the need for further maintenance.
- 25 • Control, minimize, or eliminate to the extent necessary to protect HHE post-closure escape of  
26 dangerous waste, dangerous constituents, leachate, contaminated runoff, or dangerous waste  
27 decomposition products to the ground, surface water, groundwater, or atmosphere.
- 28 • Remove all waste and waste residues.
- 29 • Decontaminate the concrete surface utilizing a physical extraction method to remove at least  
30 0.6 cm (~1/4 in.) of the surface layer and treat to a “clean debris surface” as specified in  
31 40 CFR § 268.45.
- 32 • Perform soil sampling and analysis to ensure soils under the 2401-W Building meet standard  
33 Model Toxics Control Act (MTCA) Method A or B cleanup levels, and remove any soils  
34 contaminated above these levels.
- 35 • Return the land to the appearance and use of surrounding land areas to the degree possible, given  
36 the nature of the previous dangerous waste activity.

37 **H.3 CLOSURE ACTIVITIES**

38 The 2401-W Building will be clean closed.

39 The following closure activities are required to achieve and certify clean closure:

- 40 • Remove all dangerous and mixed waste inventory (completed, Section H.3.1).
- 41 • Review dangerous and mixed waste container storage, operating, and inspection records for  
42 documented spills or releases of dangerous or mixed waste during periods of waste storage and  
43 subsequent cleanup (completed, Section H.3.2).

- 1 • Perform initial visual inspection of the floor surfaces to identify dangerous or mixed waste related  
2 staining, low points, joints/seams, cracks, holes, pits, or breaches significant enough to allow  
3 contamination to reach underlying soil. Evaluate surface to identify potential for focused sample  
4 locations (completed, Section H.3.2).
- 5 • Remove equipment and material from the 2401-W Building and perform a final visual inspection  
6 of the floor to identify dangerous or mixed waste related staining, low points, joints/seams,  
7 cracks, holes, pits, or breaches significant enough to allow contamination to reach underlying  
8 soil. Evaluate surface to identify potential for additional focused sample locations  
9 (Section H.3.4).
- 10 • Decontaminate the concrete surface utilizing a physical extraction method to remove at least  
11 0.6 cm (~1/4 in.) of the surface layer and treat to a “clean debris surface” as specified in  
12 40 CFR § 268.45 (Section H.3.5).
- 13 • Confirm the concrete surface meets closure performance standard of “clean debris surface” via  
14 visual inspection (Section H.3.8 and H.5.1).
- 15 • Perform focused soil sampling below the 2401-W Building (Section H.4.4).
- 16 • Confirm analytical results from soil samples meet closure performance standards (Section H.3.9).
- 17 • Identify and manage contaminated environmental media (Section H.3.6).
- 18 • Identify and manage waste generated during closure (Section H.3.7).
- 19 • Transmit closure certification to Ecology as in Section H.5.3.

### 20 **H.3.1 Removal of Wastes and Waste Residues**

21 No dangerous or mixed waste is currently stored at the 2401-W Building. The last dangerous waste was  
22 removed in November 2010 from the CAA. The 2401-W Building will not be used for dangerous or mixed  
23 waste storage in the future.

24 It is unknown if dangerous or mixed waste residues are present at this DWMU. If dangerous or mixed  
25 waste residues are found during clean closure activities, then such residues will be removed and managed  
26 as newly generated waste in accordance with Section H.3.7.

### 27 **H.3.2 Operating Records Review and Visual Inspection**

28 In 1999, closure of the 2401-W Building was considered. A records review of the 2401-W Building was  
29 completed for records covering waste storage from May 1989 to June 1999. There was no sign of  
30 dangerous or mixed waste contamination found from the records review. Documentation for the prior  
31 closure efforts is included DOE/RL-99-46, *2401-W Waste Storage Building Closure Plan*.

32 To support the development of this closure plan, an additional records review of the CWC-WRAP  
33 container storage, operating, and inspection records were completed and submitted to the operating  
34 record. The records review included the following operating record documents: facility operating  
35 logbooks (including spill reports), waste management inspection records, and surveillance records. The  
36 operating records that were reviewed focused on the period during active waste storage for the CWC  
37 continuing on from the prior 1999 records review (i.e., June 1999 through December 2000) including:

- 38 • CWC Outside Storage Area A.
- 39 • CWC Outside Storage Area B.
- 40 • 2401-W Building.

41 The records review extended past the active waste storage period to August 2013. The records review  
42 indicated no releases of dangerous or mixed waste in the 2401-W Building. Table H-3 provides a  
43 summary of the records review for this current closure plan.

**Table H-3 Operating Records Review Summary**

Document Title	Document Type	Timeframe of Records Reviewed		Items of Concern Noted
		Start Date	End Date	
CWC Inspection Checklist	Weekly Inspection	07/1999	12/2000	No
CWC Operating Log	Logbook	06/01/1999	12/28/2000	No
CWC Operating Log	Logbook	12/06/2006	8/12/2013	No

1  
2 Mixed waste container data found during the records review are presented in Table H-4.

**Table H-4 Mixed Waste Container Data**

Container Quantity	Facility ID	Waste Package Type	Total Volume (m <sup>2</sup> )	Waste Type	Beginning Storage Date	Ending Storage Date	Assigned Waste Codes
318	2401-W	Various	203.4	DW/MW	05/12/1989	12/18/2000	D001, D002, D003, D005, D006, D007, D008, D009, D011, D018, D019, D023, D030, D032, D033, D035, D036, D038, F001, F002, F003, F004, F005, U169, WP01, WP02, WSC2, WT01, WT02

DW/MW = Dangerous Waste/Mixed Waste

ID = Identification

4  
5 For the purposes of focused sampling, a visual inspection was performed by the Permittees for the visible  
6 floor surface in the 2401-W Building on August 14, 2013, to identify any dangerous or mixed waste related  
7 staining. No dangerous or mixed waste related staining was identified during the visual inspection.

8 Initial sample locations: Ecology and the Permittees performed an additional walk down and inspection of  
9 the DWMU in November of 2018. Ecology added six focused soil samples at locations where  
10 construction joints/seams of the concrete floor intersect. Sample locations are identified in Figure H-7.  
11 Section H.4.4.1 provides details on the sample design for the focused soil samples.

12 Ecology and the Permittees conducted the above inspections without removing stored equipment and  
13 non-waste materials. Once all stored equipment and materials have been removed from the  
14 2401-W Building to support sampling and decontamination activities, a final visual inspection will be  
15 performed by the Permittees and Ecology (Section H.3.4).

1 Sample locations after the Settlement Agreement was finalized: there are four focused soil locations along  
2 construction joints/seams and equidistant from each other and the pad edges (outer walls) (Figure H-7).

3 Supporting documentation for the Permittees' visual inspection is included in Attachment A,  
4 *CWC 2401-W Building Visual Inspection Documentation*.

### 5 **H.3.3 Unit Components, Parts, and Ancillary Equipment**

6 The 2401-W Building does not have any unit components, parts, or ancillary equipment identified for  
7 removal as part of closure. The 2401-W Building will remain in place pending confirmation and  
8 acceptance of clean closure.

### 9 **H.3.4 Inspection of Unit Before Decontamination**

10 Once closure activities begin, all stored equipment and material will be removed from the  
11 2401-W Building. A visual inspection of the floor surface by the Permittees and Ecology will be  
12 conducted to identify any dangerous waste or mixed waste related staining, low points, joints/seams,  
13 cracks, holes, pits, or breaches significant enough to allow contamination to reach underlying soil.  
14 Additional focused sampling will be performed if the final visual inspection identifies areas where waste  
15 has a potential avenue to reach the underlying soil. If the need for additional focused soil sampling is so  
16 identified, the Permittees will submit a permit modification request to modify the closure plan.

### 17 **H.3.5 Decontamination**

18 Decontamination of the concrete surface in the 2401-W Building DWMU will be performed by physically  
19 extracting at least 0.6 cm (~1/4 in.) of the concrete surface layer, to a clean debris surface. A series of  
20 cutter blades, impact hammers, rotating grinding wheels, or similar equipment will be used to break up  
21 the concrete surface layer. Physical extraction techniques will be performed in accordance with  
22 40 CFR 268.45, Table 1, "Alternative Treatment Standards for Hazardous Debris," and will include one or  
23 more of the following:

- 24 • Abrasive blasting.
- 25 • Scarification, grinding, and planing.
- 26 • Spalling.

27 Decontamination includes the following steps:

- 28 1. Ensure all stored materials and equipment are relocated or removed from the area.
- 29 2. If using wet-cutting equipment, seal all significant cracks including expansion joints identified  
30 during the visual inspection (Section H.3.4) using an appropriate sealant material.
- 31 3. Decontaminate the concrete surface by removing at least 0.6 cm (~1/4 in.), to a "clean debris  
32 surface" (as defined in Section H.5.1.1).

33 Residual material from decontamination activities will be managed as newly generated waste in  
34 accordance with Section H.3.7.

35 Equipment that becomes contaminated during decontamination and sampling activities will be  
36 decontaminated for re-use or managed and disposed of as newly generated waste in accordance with  
37 Section H.3.7. A temporary decontamination area may be established near the 2401-W Building. This area  
38 will be constructed of Visqueen™ or an equivalent material, and may be used for decontamination of  
39 sampling equipment, personal protective equipment, and other miscellaneous small equipment used  
40 during decontamination and sampling activities. When decontamination of equipment is completed, the  
41 Visqueen™ or equivalent material, rinsate, and solid waste debris generated by equipment  
42 decontamination (e.g., rags and personal protective equipment) will be removed and managed as newly  
43 generated waste in accordance with Section H.3.7.

1 **H.3.6 Identifying and Managing Contaminated Environmental Media**

2 The records review and initial visual inspection outlined in Section H.3.2 did not identify any releases of  
3 dangerous or mixed waste or the presence of staining that could be related to dangerous or mixed waste.  
4 Contaminated environmental media (soil) removal is not anticipated. However, contaminated soil will be  
5 remediated at the focused sample location(s) where analytical results indicate contamination.

6 If contamination above closure performance standards is identified, then the nature and extent of  
7 contamination will be evaluated. Soil surrounding the focused sampling location will be removed up to  
8 4.6 m (15 ft) below the surface. Contaminated soil will be removed using equipment capable of removing  
9 the quantity of material required to complete removal. If contamination exists in the soil deeper than  
10 4.6 m (15 ft), the Permittees will collaborate with Ecology for a path forward on closure. Resulting  
11 changes to this closure plan will be submitted to Ecology as a permit modification request in accordance  
12 with Permit Condition I.C.3.

13 Contaminated soil will be removed and managed as a newly generated waste stream. Contaminated soil  
14 will be managed in accordance with all applicable requirements of WAC 173-303-170, *Requirements for*  
15 *generators of dangerous waste*, through 173-303-230, *Special conditions*. [WAC 173-303-610(5)]

16 The contaminated soil will be containerized, labeled, and sampled as needed to designate for disposal of  
17 the entire volume of contaminated soil. Contaminated soil will be placed in U.S. Department of  
18 Transportation-compliant containers and sent to an appropriate land disposal unit, possibly with central  
19 accumulation as an intermediary step in accordance with all applicable requirements of WAC 173-303-  
20 200, *Conditions for exemption for a large quantity generator that accumulates dangerous waste*.  
21 Contaminated soil subject to the requirements of WAC 173-303-140, *Land disposal restrictions*,  
22 (which includes by reference 40 CFR § 268 *Land Disposal Restrictions*) will be characterized, designated,  
23 and treated, as applicable, prior to disposal in an appropriate land disposal unit.

24 **H.3.7 Identifying and Managing Waste Generated During Closure**

25 Closure activities for the 2401-W Building will result in waste generated during closure activities,  
26 requiring management and disposal. A vacuum-equipped system with a high efficiency particulate air  
27 filter will remove dust and chips during scarification, grinding, and planing to prevent release of possible  
28 contamination. Decontamination will be performed with the door(s) closed and the building ventilation  
29 system(s) deactivated to prevent possible releases. Concrete and dust collected during closure activities  
30 for the DWMU will be containerized, labeled, and sampled to properly characterize such waste prior to  
31 disposal.

32 Concrete will be removed from the surface layer of the floor to meet the “clean debris surface” standard;  
33 concrete will also be removed to access the underlying soil for focused sampling. The waste will be  
34 managed as a newly generated waste stream and either disposed of or decontaminated in accordance with  
35 WAC 173-303-610(5).

36 Newly generated waste will be managed in accordance with all applicable requirements of WAC 173-303-  
37 170 through 173-303-230. Once waste characterization results are received, all waste will be designated.  
38 Dangerous and mixed waste will be treated, if necessary, to meet land disposal restrictions in  
39 WAC 173-303-140 *Land disposal restrictions*, (which incorporates by reference 40 CFR § 268,  
40 *Land Disposal Restrictions*), then ultimately disposed in an appropriate land disposal unit.

41 Management and disposal of waste generated during closure will be documented and included as part of  
42 the clean closure certification documentation (Section H.5.3).

43 **H.3.8 Closure Performance Standards for Concrete and Soil**

44 The following subsections discuss closure performance standards for concrete and soil.

### 1 **H.3.8.1 Closure Performance Standards for Concrete**

2 For the 2401-W Building, the point of compliance, or location where it is determined that the closure  
3 performance standard has been achieved, is the surface of the concrete flooring. The closure performance  
4 standard for concrete is treatment using a physical extraction method to remove at least 0.6 cm (~1/4 in.)  
5 of the surface layer and treat to a “clean debris surface” as specified in 40 CFR § 268.45. On completion  
6 of decontamination activities, the 2401-W Building will be visually inspected to verify that the  
7 “clean debris surface” standard has been met (Section H.5.1.1).

### 8 **H.3.8.2 Closure Performance Standards for Soil**

9 The presumed exposure pathways considered for the 2401-W Waste Storage Building are:

- 10 • WAC 173-340-740(3), MTCA—Cleanup, *Unrestricted land use soil cleanup standards*,  
11 Method B (cancer and noncancer), which considers human health based on direct soil contact.
- 12 • WAC 173-340-740(2), Table 740-1, “Method A Soil Cleanup Levels for Unrestricted Land Uses”  
13 (WAC 173-340-900, *Tables*), which includes closure performance standards for human health  
14 based on unrestricted land use. MTCA Method A is only used if MTCA Method B is not available  
15 for a particular contaminant in the Cleanup Levels and Risk Calculation tables.
- 16 • WAC 173-340-747, *Deriving soil concentrations for groundwater protection*, which notes soil  
17 concentrations protective of groundwater.
- 18 • WAC 173-340-7493, *Site-specific terrestrial ecological evaluation procedures*, which considers  
19 ecological indicators (plants, biota, wildlife) in Table 749-3, “Ecological Indicator Soil  
20 Concentrations (mg/kg) for Protection of Terrestrial Plants and Animals” (WAC 173-340-900).
- 21 • WAC 173-340-750, *Cleanup standards to protect air quality*, which describes human health risks  
22 due to fugitive vapors and dust.

23 Of the exposure pathways listed above, direct soil contact is always considered a complete and viable  
24 exposure pathway for all soil samples. The exposure pathway for soil protective of groundwater assumes  
25 that water or precipitation on a surface has an avenue to percolate through the surface and underlying soil  
26 to groundwater. The scenario for ecological indicators requires that vegetation, biota, and wildlife be  
27 present in order for the pathway to be complete. The exposure scenario for inhalation of fugitive vapors  
28 and dust assumes a complete pathway, which would begin with a source of contaminated media and end  
29 with a receptor.

30 Of the viable exposure pathways, the most conservative closure performance standard is selected.  
31 Per WAC 173-340-740(5)(c), the closure performance standard value cannot be below the following:

- 32 • Hanford Site background.
- 33 • Laboratory practical quantitation limit (PQL) found in the CPCCo laboratory contracts.

34 If a closure performance standard is below both values, the higher of these two values is selected.

35 A number of exposure pathways considered from the list above were determined to be incomplete  
36 pathways and were excluded when determining closure performance standards. The records review of  
37 waste stored in the 2401-W Waste Storage Building indicate no releases (Section H.3.2). Therefore, there  
38 is no known waste-related source of contaminated media and the inhalation exposure pathway has been  
39 excluded. The concrete floor is within a maintained building where no vegetation is present; therefore, the  
40 soil pathway protective of ecological indicators has been excluded. When considering soil levels  
41 protective of groundwater, there must be a route of exposure from water or rainwater to the underlying  
42 soil. The 2401-W Waste Storage Building is an enclosed structure, with a foundation that is integrated  
43 into a perimeter concrete curb 6 in. (15.2 cm) above grade. During operations, the floors (including joints/  
44 seams) were coated with an epoxy resin floor surfacing system that was compatible with the stored waste.  
45 The Permittees’ visual inspections (Section H.3.2) did not identify dangerous or mixed waste related

1 staining. With no indication of a route of exposure from water or rainwater to the underlying soil, the soil  
2 concentration protective of groundwater pathway was excluded when calculating closure performance  
3 standards. The remaining applicable pathway for evaluation of closure performance standards was direct  
4 contact with soil which, as noted in the previous paragraph, is always a viable exposure pathway for soil  
5 samples.

6 Soil sampling and analysis will be conducted in accordance with the closure plan Sampling and Analysis  
7 Plan (SAP) located in Section H.4. Analytical results of the soil samples will be individually compared to  
8 closure performance standards consistent with closure requirements. [WAC 173-303-610(2)(b)(i)]

9 If target analytes are found above closure performance standards, then the contaminated soil will be  
10 remediated and confirmatory sampling will be conducted in accordance with Section H.4.4.3 to ensure the  
11 closure performance standards are met for the remaining soil. If failed constituents of concern do not meet  
12 closure performance standards after soil remediation, then the Permittees will meet with Ecology to  
13 determine a path forward for closure. Resulting changes to this closure plan will be submitted to Ecology  
14 as a permit modification request in accordance with Permit Condition I.C.3. The sample design for  
15 focused samples is discussed in Section H.4.4.1.

### 16 **H.3.9 Development of Closure Performance Standards for Soil**

17 The target analytes considered for evaluation during closure sampling and analysis were derived from a  
18 list of all waste codes identified at other CWC closure DWMUs. Table H-5 provides the closure  
19 performance standards for soil for each individual target analyte associated with the dangerous waste  
20 codes identified. A list of closure performance standard values for all exposure pathways was provided to  
21 Ecology in July 2017 as correspondence from DOE-RL (17-AMRP-0217, “Dangerous Waste  
22 Management Unit [DWMU] 277-T Building Closure Plan Comment Disposition, and Performance  
23 Standards for Future Solid Waste Operations Complex [SWOC] Closure Plans”), which Ecology  
24 acknowledged (17-NWP-100, “Dangerous Waste Management Unit [DWMU] 277-T Building Closure  
25 Plan Comment Disposition and Performance Standards for Future Solid Waste Operations Complex  
26 [SWOC] Closure Plans”). Values in Table H-5 have been adjusted to remove nonviable pathways as noted  
27 above.

**Table H-5 Closure Performance Standards for Soil and Analytical Performance Requirements**

CAS Number	Waste Code(s) <sup>a</sup>	Analyte	Closure Performance Standards		PQL <sup>b</sup> (mg/kg)
			Value (mg/kg)	Basis	
<b>SW-846 Method 6010</b>			<b>Accuracy Requirement ±20% Recovery<sup>c</sup> Precision Requirement ≤35 RPD<sup>d</sup></b>		
7440-38-2	D004	Arsenic <sup>c</sup>	2.00E+01	Background	1.00E+00
7440-39-3	D005	Barium	1.65E+03	Groundwater Protection	5.00E+00
7440-43-9	D006	Cadmium	6.90E-01	Groundwater Protection	5.00E-01
7439-92-1	D008	Lead	2.50E+02	Unrestricted Land Use (MTCA Method A)	5.00E+00
7782-49-2	D010	Selenium	1.00E+01	PQL	1.00E+01
7440-22-4	D011	Silver	1.36E+01	Groundwater Protection	1.00E+00
1314-62-1 (7440-62-2)	(P120)	Vanadium pentoxide (analyzed as vanadium)	4.00E+02	Human Health – Direct Contact (noncancer)	5.00E+00
<b>SW-846 Method 6020</b>			<b>Accuracy Requirement ±20% Recovery<sup>c</sup> Precision Requirement ≤35 RPD<sup>d</sup></b>		
7440-38-2	D004	Arsenic <sup>c</sup>	2.00E+01	Background	1.00E+00
<b>SW-846 Method 7196</b>			<b>Accuracy Requirement ±20% Recovery<sup>c</sup> Precision Requirement ≤35 RPD<sup>d</sup></b>		
18540-29-9	D007	Chromium (Hexavalent)	5.00E-01	PQL	5.00E-01
<b>SW-846 Method 7471</b>			<b>Accuracy Requirement ±20% Recovery<sup>c</sup> Precision Requirement ≤35 RPD<sup>d</sup></b>		
7439-97-6	D009	Mercury <sup>f</sup>	2.09E+00	Groundwater Protection	2.00E-01
<b>SW-846 Method 8015</b>			<b>Accuracy Requirement ±30% Recovery<sup>c</sup> Precision Requirement ≤30 RPD<sup>d</sup></b>		
67-56-1	F003	Methanol	6.43E+01	Groundwater Protection	5.00E+01
<b>SW-846 Method 8260</b>			<b>Accuracy Requirement ±30% Recovery<sup>c</sup> Precision Requirement ≤20 RPD<sup>d</sup></b>		
67-64-1	F003	Acetone	2.89E+01	Groundwater Protection	2.00E-02
71-43-2	D018, F005	Benzene	2.82E-02	Groundwater Protection	5.00E-03
71-36-3	U031, F003	<i>n</i> -Butyl alcohol (1-Butanol)	3.31E+00	Groundwater Protection	2.50E-01

**Table H-5 Closure Performance Standards for Soil and Analytical Performance Requirements**

CAS Number	Waste Code(s) <sup>a</sup>	Analyte	Closure Performance Standards		PQL <sup>b</sup> (mg/kg)
			Value (mg/kg)	Basis	
75-15-0	F005, (P022)	Carbon disulfide	5.65E+00	Groundwater Protection	5.00E-03
56-23-5	D019, F001, F002	Carbon tetrachloride	4.60E-02	Groundwater Protection	5.00E-03
108-90-7	F002	Chlorobenzene	8.74E-01	Groundwater Protection	5.00E-03
67-66-3	D022	Chloroform	7.50E-02	Groundwater Protection	5.00E-03
108-94-1	F003, (U057)	Cyclohexanone	1.74E+02	Groundwater Protection	1.00E-01
123-91-1	(U108)	1,4-Dioxane	1.00E+01	Human Health – Direct Contact (cancer)	5.00E-01
141-78-6	F003	Ethyl acetate	2.97E+01	Groundwater Protection	5.00E+00
100-41-4	F003	Ethylbenzene	3.44E-01	Groundwater Protection	5.00E-03
60-29-7	(U117), F003	Diethyl ether [ethyl ether, ethoxyethane, or 1,1'-oxybis-ethane]	6.85E+00	Groundwater Protection	1.00E-02
78-83-1	F005	Isobutanol	9.70E+00	Groundwater Protection	5.00E-01
78-93-3	D035, F005	Methyl ethyl ketone (MEK) (2-Butanone)	1.96E+01	Groundwater Protection	2.00E-02
108-10-1	F003, (U161)	Methyl isobutyl ketone (4-Methyl-2-Pentanone)	2.73E+00	Groundwater Protection	2.00E-02
75-09-2	F001, F002	Methylene chloride	2.18E-02	Groundwater Protection	5.00E-03
127-18-4	D039, F001, F002	Tetrachloroethylene	5.30E-02	Groundwater Protection	5.00E-03
109-99-9	(U213)	Tetrahydrofuran	3.00E+01	Groundwater Protection	1.00E+01
108-88-3	F005	Toluene	4.65E+00	Groundwater Protection	5.00E-03
71-55-6	F001, F002, (U226)	1,1,1-Trichloroethane	1.58E+00	Groundwater Protection	5.00E-03
79-00-5	F002	1,1,2-Trichloroethane	2.78E-02	Groundwater Protection	5.00E-03
79-01-6	D040, F001, F002	Trichloroethylene	2.64E-02	Groundwater Protection	5.00E-03
76-13-1	F001, F002	1,1,2-Trichloro-1,2,2-trifluoroethane	1.09E+04	Groundwater Protection	1.00E-02

**Table H-5 Closure Performance Standards for Soil and Analytical Performance Requirements**

CAS Number	Waste Code(s) <sup>a</sup>	Analyte	Closure Performance Standards		PQL <sup>b</sup> (mg/kg)
			Value (mg/kg)	Basis	
75-69-4	F002	Trichlorofluoromethane	2.84E+01	Groundwater Protection	1.00E-02
75-01-4	D043	Vinyl chloride	1.00E-02	PQL	1.00E-02
1330-20-7	F003	Xylenes (total)	1.46E+01	Groundwater Protection	1.00E-02
<b>SW-846 Method 8270</b>			<b>Accuracy Requirement ±30% Recovery<sup>c</sup> Precision Requirement ≤30 RPD<sup>d</sup></b>		
95-48-7	F004	<i>o</i> -Cresol reported as total cresols <sup>g</sup>	2.33E+00	Groundwater Protection	3.33E-01
121-14-2	D030	2,4-Dinitrotoluene	3.33E-01	PQL	3.33E-01
95-50-1	F002	1,2-Dichlorobenzene (Ortho-dichlorobenzene)	7.03E+00	Groundwater Protection	3.33E-01
111-44-4	(U025)	bis (2-chloroethyl) ether (dichloroethyl ether)	3.33E-01	PQL	3.33E-01
67-72-1	D034	Hexachloroethane	3.33E-01	PQL	3.33E-01
98-95-3	F004	Nitrobenzene	3.33E-01	PQL	3.33E-01
87-86-5	D037	Pentachlorophenol	6.60E-01	PQL	6.60E-01
110-86-1	F005	Pyridine	6.60E-01	PQL	6.60E-01
<b>SW-846 Method 9012</b>			<b>Accuracy Requirement ±20% Recovery<sup>c</sup> Precision Requirement ≤35 RPD<sup>d</sup></b>		
57-12-5	(P030)	Cyanides, Total <sup>g</sup> (soluble cyanide salts)	1.94E+00	Groundwater Protection	1.00E+00
<b>SW-846 Method 9056</b>			<b>Accuracy Requirement ±20% Recovery<sup>c</sup> Precision Requirement ≤35 RPD<sup>d</sup></b>		
64-18-6	(U123)	Formic acid (measured as Formate)	7.20E+04	Human Health – Direct Contact (noncancer)	2.00E+00
<b>Not Analyzed</b>			<b>Not Analyzed</b>		
CAS Number	Waste Code(s)	Analyte	CAS Number	Waste Code(s)	Analyte
75-07-0	(U001)	Acetaldehyde <sup>i</sup>	1338-23-4	(U160)	MEK peroxide <sup>j</sup> (2-Butanone peroxide)
75-36-5	(U006)	Acetyl chloride <sup>l</sup>	79-46-9	F005	2-Nitropropane <sup>i</sup>
107-20-0	(P023)	Chloroacetaldehyde <sup>k</sup>	1314-80-3	(U189)	Phosphorus pentasulfide <sup>j</sup>
110-80-5	F005, (U359)	2-Ethoxyethanol <sup>l</sup>	N/A	F001, F002	Chlorinated fluorocarbons <sup>m</sup>

**Table H-5 Closure Performance Standards for Soil and Analytical Performance Requirements**

CAS Number	Waste Code(s) <sup>a</sup>	Analyte	Closure Performance Standards		PQL <sup>b</sup> (mg/kg)
			Value (mg/kg)	Basis	

References:

17-AMRP-0217, “Dangerous Waste Management Unit (DWMU) 277-T Building Closure Plan Comment Disposition, and Performance Standards for Future Solid Waste Operations Complex (SWOC) Closure Plans.”

17-NWP-100, “Dangerous Waste Management Unit (DWMU) 277-T Building Closure Plan Comment Disposition and Performance Standards for Future Solid Waste Operations Complex (SWOC) Closure Plans.”

DOE/RL-92-24, *Hanford Site Background: Part 1, Soil Background for Nonradioactive Analytes*.

ECF-HANFORD-11-0038, *Soil Background for Interim Use at the Hanford Site*.

Ecology, 2013, “Issues Associated with Establishing Soil Cleanup Levels for Arsenic.”

Ecology, 2019, *Cleanup Levels and Risk Calculation (CLARC) Data Tables*, Toxics Cleanup Program.

Howard et al., 1991, *Handbook of Environmental Degradation Rates*.

SW-846, *Test Methods for Evaluating Solid Waste: Physical/Chemical Methods*, Third Edition; Final Update V.

WAC 173-340, *Model Toxics Control Act Cleanup Regulations*.

173-340-740, *Unrestricted land use soil cleanup standards*.

173-340-747, *Deriving soil concentrations for groundwater protection*.

Notes: Screening levels considered when developing closure performance standards were drawn from the following:

- MTCA (WAC 173-340-740, MTCA—Cleanup, *Unrestricted land use soil cleanup standards*) (Ecology, 2019, *Cleanup Levels and Risk Calculation (CLARC) Tables*, May 2019 data tables are the most recent). MTCA Method B values represent both cancer and noncancer human health risk values from direct soil contact. The most conservative value of the two Method B published values will be used. Method A values are substituted when MTCA Method B values are not provided in the CLARC tables.
- WAC 173-340-747(4) describes the fixed parameter three-phase partitioning model. Where applicable, these values were used. Values selected were from the 25°C vadose zone. If values were not listed for 25°C, values from the 13°C vadose zone were used.
- Background levels as published in ECF-HANFORD-11-0038, *Soil Background for Interim Use at the Hanford Site*, and DOE/RL-92-24, *Hanford Site Background: Soil Background for Nonradioactive Analytes*. Background values were used at the 90<sup>th</sup> percentile of calculated Hanford background values.
- Closure performance standard values for all exposure pathways were provided to Ecology in July 2017 correspondence from DOE-RL (17-AMRP-0217) and which values Ecology acknowledged (17-NWP-100). Values in this table have been adjusted to remove nonviable pathways.
- Values taken from the above resources that fell below background levels were not considered.

<sup>a</sup>Many of the chemicals listed in this table also have P and U waste codes associated with them (WAC 173-303-9903, *Discarded chemical products list*). (1) These codes are listed in the table because it is unknown whether or not the waste container had a “discarded chemical product” (per WAC 173-303-081) or if it was a chemical contaminant of the waste. (2) The P and U code designations do play a part in the determination of dangerous waste criteria (WAC 173-303-100), as they indicate that chemical as either acutely hazardous (P) or dangerous (U) waste based on toxicity and/or persistence calculations. For these reasons, the P and U codes are listed in parentheses.

<sup>b</sup>Highest allowable PQL will be defined in the individual laboratory contract with CPCCo. In practice, the laboratory PQL values have the potential to be lower.



1  
2  
3  
4  
5

This page intentionally left blank.

### 1 **H.3.10 Conditions That Will be Achieved When Closure is Complete**

2 Upon completion of the closure activities, the 2401-W Building will remain in an “as-is” state with the  
3 building remaining in place. The 2401-W Building will continue to be used for equipment and material  
4 storage in support of CWC-WRAP operations. Once Ecology accepts the clean closure certification, a  
5 permit modification request will be submitted to remove the 2401-W Building DWMU closure  
6 requirements from the Permit.

## 7 **H.4 SAMPLING AND ANALYSIS PLAN**

8 Sampling and analysis of the soil below the 2401-W Building will be conducted to confirm whether  
9 closure performance standards for soil have been met. Sampling includes four focused soil samples  
10 (Figure H-7). Sampling and analysis will be performed in accordance with the sampling and quality  
11 standards established in this closure SAP.

### 12 **H.4.1 Sampling and Analysis Plan Requirements**

13 Sampling and analysis activities were designed using the EPA guidance document EPA/240/R-02/005,  
14 *Guidance on Choosing a Sampling Design for Environmental Data Collection for Use in Developing a*  
15 *Quality Assurance Project Plan* (EPA QA/G-5S) and Ecology Publication #94-111, and will be conducted  
16 via this SAP. The objective of the soil sampling described in this section is to determine if the closure  
17 performance standards (Table H-5) established in this closure plan pursuant to WAC 173-303-610(2)(b)(i)  
18 and WAC 173-303-610(2)(b)(ii) have been satisfied, demonstrating clean closure for the  
19 2401-W Building.

20 The closure SAP details sampling and analysis procedures in accordance with SW-846, *Test Methods for*  
21 *Evaluating Solid Waste: Physical/Chemical Methods*, Third Edition; Final Update V; the American  
22 Society for Testing and Materials (ASTM) *Annual Book of ASTM Standards* (ASTM International, 2017);  
23 and applicable EPA guidance. Sampling and analysis activities will meet applicable requirements of  
24 SW-846, ASTM standards, and EPA-approved methods at the time of closure. This SAP was also  
25 developed using guidance from Ecology Publication #94-111, Section 7.0, Sampling and Analysis for  
26 Clean Closure, and EPA/240/R-02/005.

### 27 **H.4.2 Sampling and Analysis Schedule**

28 Closure sampling and analysis will be performed in accordance with the closure plan schedule located in  
29 Section H.6.

### 30 **H.4.3 Project Management**

31 The following subsections address project management and ensure that the project has defined goals,  
32 participants understand the goals and approaches used, and planned outputs are appropriately  
33 documented. Project management roles and responsibilities discussed in this section apply to the major  
34 activities covered under this SAP.

#### 35 **H.4.3.1 Project/Task Organization**

36 The Permittees are responsible for planning, coordinating, sampling, preparing, packaging, and shipping  
37 samples to the contract analytical laboratory. The project has the following key positions.

38 **Regulatory Representative.** Ecology will assign an Ecology employee as Project Manager responsible  
39 for oversight of the 2401-W Building closure.

40 **Project Manager and Technical Lead.** The CPCCo Project Manager provides oversight of closure  
41 activities and coordinates with the DOE-RL, Ecology, and contract management. In addition, support is  
42 provided to the project technical lead to ensure that work is performed safely and cost effectively.

1 The Project Manager (or designee) for the 2401-W Building closure sampling is responsible for direct  
2 management of sampling documents and requirements, field activities, and subcontracted tasks. The  
3 Project Manager is responsible for ensuring that project personnel are working to the approved version of  
4 the 2401-W Building Closure Plan in the Permit and for providing updates to field personnel.

5 The Project Manager works closely with QA, Health and Safety, and the FWS to integrate these and other  
6 lead disciplines in planning and implementing the work scope. The Project Manager also coordinates with  
7 DOE-RL and the primary contractor management on all sampling activities. The Project Manager  
8 supports DOE-RL in coordinating sampling activities with the Regulatory Representative.

9 **Environmental Compliance Officer.** The Environmental Compliance Officer provides technical  
10 oversight, direction, and acceptance of project and subcontracted environmental work, and develops  
11 appropriate mitigation measures with a goal of minimizing adverse environmental impacts.

12 **Health and Safety.** The Health and Safety organization is responsible for coordinating industrial safety  
13 and health support within the project, as carried out through health and safety plans, job hazard analyses,  
14 and other pertinent safety documents required by federal regulation or internal primary contractor work  
15 requirements.

16 **Waste Management Lead.** The Waste Management Lead communicates policies and protocols, and  
17 ensures project compliance for storage, transportation, disposal, and waste tracking.

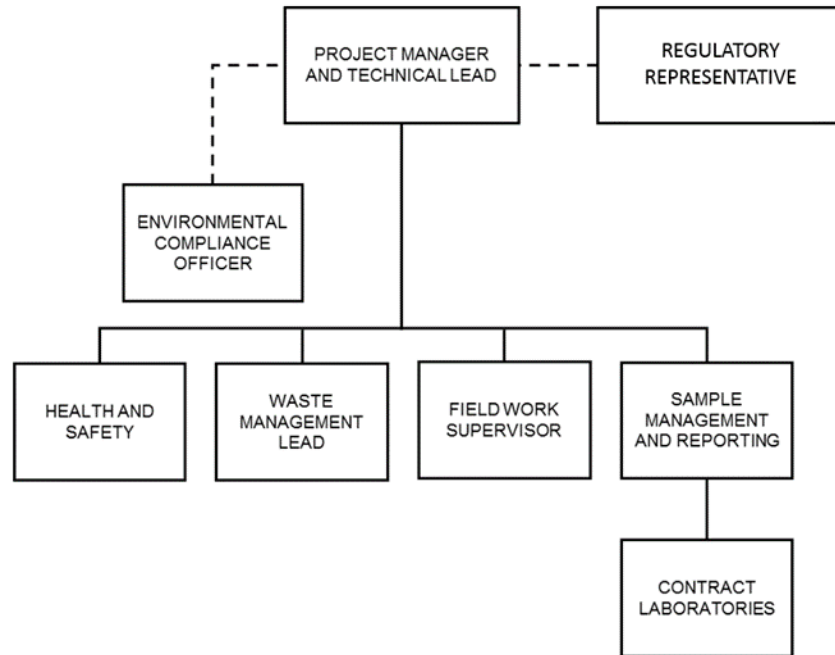
18 **Field Work Supervisor.** The FWS is responsible for planning and coordinating field sampling resources.  
19 The FWS ensures that samplers are appropriately trained and available. Additional related responsibilities  
20 include ensuring that the sampling design is achievable, understood, and can be performed as specified.

21 The FWS must document all deviations from procedures or other problems pertaining to sample  
22 collection, Chain-of-Custody (COC) protocols, analytes, sample analysis, sample transport, or  
23 noncompliant monitoring. As appropriate, such deviations or problems will be documented in the field  
24 logbook or in nonconformance report forms in accordance with internal corrective action procedures. The  
25 FWS is responsible for communicating field corrective actions to the Project Manager and for ensuring  
26 that immediate corrective actions are applied to field activities.

27 **Sample Management and Reporting.** The Permittee's sampling organization coordinates field sampling  
28 as well as laboratory analytical work, ensuring that laboratories conform to the specifications of SW-846  
29 analytical methodology at the time of closure. The sampling organization receives the analytical data from  
30 the laboratories, performs the data entry into the Hanford Environmental Information System (HEIS)  
31 database, and arranges for data validation. The sampling organization is responsible for informing the  
32 Project Manager of any issues reported by the contract analytical laboratory.

33 **Contract Laboratories.** The contract laboratories analyze samples in accordance with established  
34 procedures and provide necessary sample reports and explanation of results in support of data validation.

35 The roles described above make up the project organization structure (regarding sampling and analysis)  
36 and interact in a manner shown graphically in Figure H-6.



1 **Figure H-6 Sampling and Analysis Plan Project Organization**

2

3 **H.4.3.2 Field Sampler Training/Certification**

4 Training records of field samplers are maintained by the sampling organization, retained in the electronic  
5 training record database, or archived with operating records. Field samplers will be collecting grab  
6 samples of the soil beneath the concrete floor for analysis to determine if soil closure performance  
7 standards have been met.

8 **H.4.3.3 Sampling Documents and Records**

9 The Project Manager is responsible for ensuring that the current version of the SAP is being used and  
10 providing any updates to field personnel. Version control is maintained by the administrative document  
11 control process. Changes to the SAP affecting the data needs will be submitted as a permit modification  
12 request.

13 Logbooks are required for field activities. A logbook must be identified with a unique project name and  
14 number. The individual(s) responsible for logbooks will be identified in the front of the logbook and only  
15 authorized persons may make entries in logbooks. After review, logbooks will be signed by the field  
16 manager, supervisor, cognizant scientist/engineer, or other responsible individual. Logbooks will be  
17 permanently bound, waterproof, and ruled with sequentially numbered pages. Pages will not be removed  
18 from logbooks for any reason. Entries will be made in indelible ink. Corrections will be made by marking  
19 through the erroneous data with a single line, entering the correct data, and initialing and dating the  
20 changes.

21 The Project Manager is responsible for ensuring that a project file is properly maintained. The project file  
22 will contain the records or references to their storage locations. The following items will be included in  
23 the project file, as appropriate:

- 24
- 25
- 26
- 27
- Field logbooks or operational records.
  - Global positioning system data.
  - Sample authorization forms.
  - Data forms.

- 1 • COC forms.
- 2 • Sample receipt records.
- 3 • Inspection or assessment reports and corrective action reports.
- 4 • Interim progress reports.
- 5 • Final reports.
- 6 • Laboratory data packages.
- 7 • Data verification and validation reports.

8 The contract analytical laboratory is responsible for maintaining, and having available upon request, the  
9 following items:

- 10 • Analytical logbooks.
- 11 • Raw data and Quality Control (QC) sample records.
- 12 • Standard reference material or proficiency test sample data.
- 13 • Instrument calibration information.

14 Records will be stored in accordance with Section H.1.4.4.

#### 15 **H.4.4 Sampling Design and Analysis**

16 The sampling design includes input parameters used to determine the number and location of samples.  
17 The primary purpose of sampling the soil is to determine if analytical results meet closure performance  
18 standards (Table H-5).

##### 19 **H.4.4.1 Sampling Process Design**

20 This SAP is based on guidance from Ecology Publication #94-111, Section 7.0, to determine the type of  
21 sampling design that will be used to demonstrate clean closure. When designing the sampling plan,  
22 focused sampling methods were considered. The basis for sampling is described in the following  
23 paragraphs.

24 **Focused (Judgmental) Sampling.** As identified in Ecology Publication #94-111, Section 7.2.2, Focused  
25 Sampling, this method is selective sampling of areas where contamination is expected or releases have  
26 been documented.

27 Focused sampling should be conducted in addition to grid sampling where there is evidence of leaks or  
28 spills or potential for a dangerous waste constituent to migrate. Focused sampling could involve liner  
29 sampling along a drainage-way, boundary, or other linear dimension. Likely areas for focused sampling  
30 include, but are not limited to:

- 31 • Containers, tanks, waste piles, or any other units (such as ancillary pipes) in contact with soil;
- 32 • Below any sumps or valves;
- 33 • Load or unload areas;
- 34 • Storage units with underlying pavements or concrete that appears to be cracked or broken; and
- 35 • Areas receiving runoff or discharge from DWMUs, such as a ditch, a swale, or the discharge  
36 point down gradient from a pipe.

37 Evidence for additional areas of focused sampling could include:

- 38 • Visual or olfactory evidence of contamination including evidence based on direct reading field  
39 instrumentation or field test kits;
- 40 • Knowledge, such as reports by employees, inspectors, or others that releases have or may have  
41 occurred;

- 1 • Length of time the unit has been in existence;
- 2 • Entries into the unit operating record; and
- 3 • Soil gas surveys or soil borings.

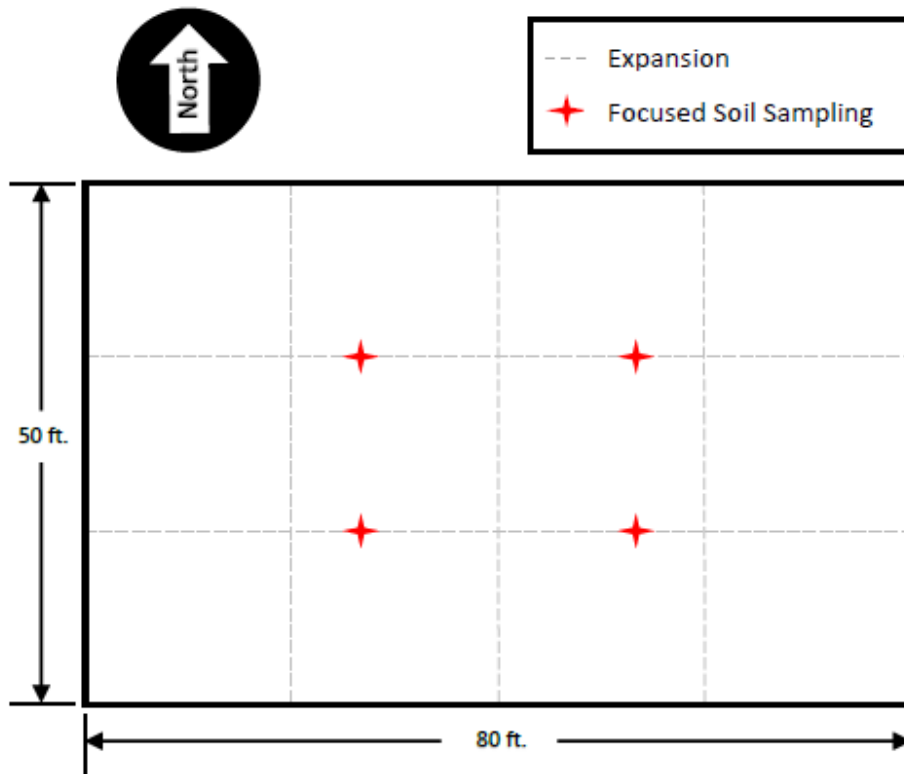
4 Per Ecology’s visual inspection (Section H.3.2) and Ecology’s professional judgment, four focused  
5 sample locations are identified for the soil beneath the 2401-W Building (Figure H-7).

6 The intersections where two construction joints/seams meet are considered possible avenues for waste to  
7 migrate to the soil below the concrete; therefore, these locations were identified for focused soil sampling.

8 Selection of focused sampling units (i.e., the number and location of samples) is generally based on  
9 knowledge of the feature or condition under investigation and on professional judgment. Focused  
10 sampling is distinguished from probability-based sampling in that inferences are based on professional  
11 judgment, not statistical scientific theory. Therefore, conclusions about the target population are limited  
12 and depend entirely on the validity and accuracy of professional judgment.

13 The use of statistical evaluation for focused data is not possible. Any focused data must be reviewed  
14 directly against the closure performance standards as to whether they are above or below the standards.

15



16

**Figure H-7 Sampling Locations**

1 **H.4.4.2 Sampling Methods and Handling**

2 The grab sample matrix will consist of soil collected in clean sample containers. Soil will be collected at a  
3 depth of no more than 15 cm (6 in.) below ground surface, unless staining or discoloration indicates  
4 contamination is below that depth. For the purpose of this SAP, ground surface is defined as the exposed  
5 surface layer once concrete has been removed. Once the soil is collected, the sampled media will be  
6 screened to remove material larger than approximately 2 mm (0.08 in.) in diameter, which allows for a  
7 larger surface area-to-volume ratio. This ratio increases the likelihood of identifying any potential  
8 contamination in the sample.

9 To ensure sample and data usability, sampling will be performed in accordance with established sampling  
10 practices, procedures, and requirements pertaining to sample collection, collection equipment, and sample  
11 handling. Sampling includes the following:

- 12 • Preparation and review of sampling paperwork such as COC or labels.
- 13 • Sample container and equipment preparation.
- 14 • Field walk down of sample area (includes locating and marking sample locations).
- 15 • Sample collection.
- 16 • Sample packaging and shipping.

17 Sample preservation and holding time requirements are specified in Table H-6. These requirements are in  
18 accordance with the analytical method specified. The final container type and volumes will be identified  
19 on the sampling authorization form and the COC form.

20

**Table H-6 Preservation, Container, and Holding Time Requirements for Soil Samples**

EPA Method	Analysis (Analytes)	Preservation Requirement	Holding Time	Bottle Type
6010	ICP-AES (Metals)	None	180 days	G/P
6020	ICP-MS (Metals)	None	180 days	G/P
7196	Colorimetric (Hexavalent Chromium)	Cool to $\leq 6^{\circ}\text{C}$	30 days from sampling to extraction; 7 days from extraction to analysis	G/P
7471	Cold Vapor Atomic Absorption (Mercury)	Cool to $\leq 6^{\circ}\text{C}$	28 days	G/P
8015	GC/Flame Ionization Detector (Non-halogenated Organics [Methanol])	Cool to $\leq 6^{\circ}\text{C}$	14 days	G
8260	GC/MS (Volatile Organic Compounds)	Frozen*	14 days	G
8270	GC/MS (Semivolatile Organic Compounds)	Cool to $\leq 6^{\circ}\text{C}$	14 days from sampling to extraction; 40 days from extraction to analysis	Amber Glass

Reference: SW-846, *Test Methods for Evaluating Solid Waste: Physical/Chemical Methods*, Third Edition, Final Update V.

\*Preservation techniques for soil samples collected include refrigeration immediately following collection (placing on ice) and freezing overnight prior to shipping. Holding times are from sampling to analysis unless specified otherwise.

AES = Atomic Emission Spectrometry

ICP = Inductively Coupled Plasma

EPA = U.S. Environmental Protection Agency

MS = Mass Spectrometry

GC = Gas Chromatography

G/P = Glass/Plastic

1 A sampling and data-tracking database (e.g., HEIS) is used to track the samples from the point of  
2 collection through the laboratory analysis process. HEIS sample numbers are issued to the sampling  
3 organization for the project. Each sample is identified and labeled with a unique HEIS sample number.

4 To prevent potential contamination of the samples, clean equipment will be used for each sampling  
5 activity. Equipment used during sampling will be decontaminated or disposed of and managed as newly  
6 generated waste in accordance with Section H.3.6. Level I EPA pre-cleaned sample containers will be  
7 used for samples collected for chemical analysis. Container sizes may vary, depending on  
8 laboratory-specific volumes/requirements for meeting the PQL.

9 The date and time of sample collection, and the sample location, depth, and corresponding HEIS numbers  
10 will be documented in the sampler's field logbook. A custody seal (e.g., evidence tape) will be affixed to  
11 each sample container (except for Volatile Organic Analysis [VOA] sample containers) or the sample  
12 collection package in such a way as to indicate potential tampering. The custody seal will be inscribed  
13 with the sampler's initials and date. Custody tape is not applied directly to VOA sample containers based  
14 on the potential for affecting analyte results or fouling of laboratory equipment. Alternatively, VOA vials  
15 are placed in a sealable plastic bag affixed with custody seals and any other required  
16 labels/documentation.

17 Data verification and validation will also note any issues with sample collection and analysis. Each  
18 sample container will be labeled with the following information on firmly affixed, water-resistant labels:

- 19 • Sample authorization form and form number.
- 20 • HEIS number.
- 21 • Sample collection date and time.
- 22 • Sampler identification (e.g., initials).
- 23 • Analysis required.
- 24 • Preservation method (if applicable).
- 25 • COC identification number.

26 In addition to the container label information, sample records must include:

- 27 • Sample location.
- 28 • Matrix (e.g., soil).

29 Sample custody will be maintained in accordance with existing Hanford Facility protocols to ensure  
30 maintenance of sample integrity throughout the analytical process. COC protocols will be followed  
31 throughout sample collection, transfer, analysis, and disposal to ensure that sample integrity is  
32 maintained. A COC record is initiated in the field at the time of sampling and will accompany each set of  
33 samples shipped to any laboratory. At a minimum, the following information must be identified on a  
34 completed COC record:

- 35 • Collector(s) names.
- 36 • Project designation.
- 37 • Unique sample numbers.
- 38 • Date, time, and location (or traceable reference thereto) of sample collection.
- 39 • Chain of possession information (i.e., signatures/printed names of all individuals involved in the  
40 transfer of sample custody and storage locations, dates of receipt and relinquishment).

41 Additional information regarding the sample and specific analytical instructions may also be documented.

1 Discrepancies with the sample material (unusual color, texture, or odor), collection techniques, containers,  
2 or transfer packages are noted in the field logbook, communicated with the Project Manager, and  
3 corrective actions are initiated. For example, where a custody seal is damaged or missing, each case is  
4 individually reviewed for usability of the sample. The damaged or missing seal and action taken will be  
5 documented in the final data package. Data verification and validation will also note any issues with  
6 sample collection and analysis.

7 Contaminated environmental media and newly generated waste resulting from sampling activities will be  
8 handled in accordance with all applicable requirements of WAC 173-303-170 through WAC 173-303-230  
9 as outlined in Sections H.3.6 and H.3.7.

#### 10 **H.4.4.3 Sampling and Analysis Requirements to Address Removal of Contaminated Soil**

11 If focused soil sample results based on direct comparison (Section H.4.4.1) indicate contamination above  
12 closure performance standards, then sample location(s) will be remediated to remove contaminated soil.  
13 Following remediation, confirmatory sampling will be performed in accordance with this closure SAP.  
14 Analytical results of confirmatory sample(s) collected at focused sample location(s) will be directly  
15 compared to the closure performance standards to confirm remediation efforts were effective and the area  
16 is clean. If after remediation the soil does not meet closure performance standards, then the Permittees  
17 will meet with Ecology to determine a path forward for closure. Resulting changes to this closure plan  
18 will be submitted to Ecology as a permit modification request in accordance with Permit Condition I.C.3.

#### 19 **H.4.4.4 Analytical Methods**

20 All analyses and testing will be performed consistent with this closure plan, laboratory contracts, and  
21 laboratory analytical procedures at the time of closure. The contracted analytical laboratory must achieve  
22 the lowest PQLs consistent with the selected analytical method (identified in Table H-5) in order to  
23 confirm that the closure performance standards are met.

#### 24 **H.4.4.5 Quality Control**

25 QC procedures must be followed in the field and laboratory to ensure that reliable data are obtained. Field  
26 QC samples will be collected to evaluate the potential for cross-contamination and provide information  
27 pertinent to field sampling variability. Field QC samples include the collection of:

- 28 • Field trip blanks.
- 29 • Field transfer blanks.
- 30 • Equipment rinsate blanks.
- 31 • Field duplicates.

32 Laboratory QC samples estimate the precision and bias of the analytical data. Laboratory QC samples  
33 include:

- 34 • Method blanks.
- 35 • Laboratory duplicates.
- 36 • Matrix spikes.
- 37 • Matrix spike duplicates.
- 38 • Surrogates.
- 39 • Laboratory control samples.

40 Field and laboratory QC samples are summarized in Table H-7.

**Table H-7 Project Quality Control Sampling Summary**

<b>QC Sample Type</b>	<b>Frequency</b>	<b>Characteristics Evaluated</b>
<b>Field QC</b>		
Field Trip Blanks	One per 20 samples, minimum of one per decision unit	Field trip blanks are used to assess contamination from sample containers or during transportation and storage procedures.
Field Transfer Blanks	One per day that volatile organic compounds are sampled	Field transfer blanks are used to assess contamination from surrounding sources during sample collection.
Equipment Rinsate Blanks	One per 20 samples per analytical method	Equipment rinsate blanks are used to measure the cleanliness of sampling equipment and effectiveness of equipment decontamination procedures. Equipment rinsate blanks are not required if only disposable equipment is used, or if rinsing between samples is not practical (e.g., core drilling equipment).
Field Duplicates	One per 20 samples with a minimum of one per decision unit	Field duplicates are used to assess the precision of the entire data collection activity, including sampling, analysis, and site heterogeneity.
<b>Laboratory QC*</b>		
Method Blanks	One per batch	Method blanks measure contamination associated with laboratory sample preparation and analysis.
Laboratory Duplicates	One per laboratory analytical batch	Laboratory duplicates measure laboratory reproducibility and precision.
Matrix Spikes	One per laboratory analytical batch	The matrix spike recovery measures the effects of interferences in the sample matrix and reflects the accuracy of the determination.
Matrix Spike Duplicates	One per laboratory analytical batch	The relative percent difference between matrix spikes and matrix spike duplicates measures the precision of a given analysis.
Surrogates	Added to each sample and QC (laboratory and field) sample	Surrogate standards are added prior to extraction of the sample to evaluate accuracy, method performance, and extraction efficiency.
Laboratory Control Samples	One per laboratory analytical batch	The laboratory control samples measure the accuracy of the analytical method.

\*Batching across projects is allowed for similar matrices.

1 **H.4.5 Data Review, Verification, Validation, and Usability Requirements**

2 Analytical results will be received from the contract analytical laboratory, loaded into a database  
3 (e.g., HEIS), and verified in accordance with Section H.4.5.1. A total of 5 percent of the data will be  
4 validated as described in Section H.4.5.2. A data quality assessment (DQA) will be conducted to ensure  
5 the output of the DQO process provided appropriate values (Section H.4.5.3).

6 **H.4.5.1 Data Verification**

7 Verification activities ensure analytical data in the database were properly uploaded and reflect the  
8 contract laboratory program equivalent data packages. The steps outlined below will consider both the  
9 primary and QC samples. Activities will include, but are not limited to, the following;

- 10 • Amount of data requested matches the amount of data received (number of samples for requested  
11 methods of analytes).
- 12 • Correct procedures/methods are used.
- 13 • Issues with sample collection and analysis are noted.
- 14 • Documentation/deliverables are complete.
- 15 • Hard copy and electronic versions of the data are identical.
- 16 • Data is reasonable based on analytical methodologies.

17 **H.4.5.2 Data Validation**

18 The contract analytical laboratory supplies the equivalent of contract laboratory program analytical data  
19 packages intended to support data validation by the third party. These data packages are supported by QC  
20 test results and raw data. Data validation includes both primary and QC samples, and considers issues  
21 with sample collection and analysis.

22 Controls are in place to preserve the data sent to the validators, such as allowing only additions to be  
23 made, not changes to the raw data. The format and requirements for data validation activities are based on  
24 the most current version of EPA-540-R-08-01, *National Functional Guidelines for Superfund Organic*  
25 *Methods Data Review* (OSWER 9240.1-48), and EPA-540-R-10-011, *National Functional Guidelines for*  
26 *Inorganic Superfund Data Review* (OSWER 9240.1-51). As defined by the validation guidelines,  
27 5 percent of the analytical results will undergo Level C validation.

28 **H.4.5.3 Data Quality Assessment**

29 A DQA will be performed on the final data using the guidance in EPA/240/B-06/002, *Data Quality*  
30 *Assessment: A Reviewer's Guide* (EPA QA/G-9R), and implementing the specific requirements in  
31 Sections H.4.5.1 through H.4.5.2.

32 **H.4.6 Revisions to the Sampling and Analysis Plan and Constituents to be Analyzed**

33 Changes to the SAP may be necessary due to unexpected events during closure. An unexpected event  
34 would be an event outside the scope of the SAP or a condition that inhibits implementation of the SAP as  
35 written. Revisions to the SAP will be submitted no later than 30 days after the unexpected event as a  
36 permit modification request. [WAC 173-303-610(3)(b)]

37 **H.5 CONFIRMATION AND CERTIFICATION OF CLOSURE ACTIVITIES**

38 Confirmation of closure will be performed using methods defined in Section H.5.1. Closure certification  
39 is performed by an Independent Qualified Registered Professional Engineer (IQRPE) (Section H.5.2).  
40 Certification will be submitted to Ecology as described in Section H.5.3, and the conditions of the  
41 DWMU after closure are described in Section H.3.10. The 2401-W Building will remain intact after  
42 closure. The timing of closure is described in Section H.6.

1 **H.5.1 Confirmation of Clean Closure**

2 The 2401-W Building will be clean closed through confirmation of successful decontamination of the  
3 concrete by removing at least 0.6 cm (~1/4 in.) of the surface and treating to a clean debris surface  
4 (Section H.5.1.1); and confirmation that samples of the underlying soil meet soil closure performance  
5 standards (Table H-5).

6 **H.5.1.1 Confirmation of Clean Debris Surface**

7 On completion of decontamination of the concrete surface, the area will be visually inspected to verify  
8 whether the “clean debris surface” standard, as defined below, has been met.

9 The following definition of a “clean debris surface” standard is identified in 40 CFR § 268.45, Table 1,  
10 footnote 3:

11 “Clean debris surface” means the surface, when viewed without magnification, shall be  
12 free of all visible contaminated soil and hazardous waste except that residual staining  
13 from soil and waste consisting of light shadows, slight streaks, or minor discolorations,  
14 and soil and waste in cracks, crevices, and pits may be present provided that such staining  
15 and waste and soil in cracks, crevices, and pits shall be limited to no more than 5% of  
16 each square inch of surface area.

17 This confirmation step will be documented. Documentation may include photos, locations and  
18 dimensions of residual staining or waste remaining, cracks, crevices, or pits (if any). Staining or waste  
19 remaining on the surface should be calculated to confirm whether the impacted area is less than 5 percent  
20 of the surface. Once it has been determined that the “clean debris surface” standard has been met, then the  
21 concrete surfaces shall have achieved the closure performance standard for concrete, and that portion of  
22 2401-W Building will be considered clean.

23 If a clean debris surface is not achieved for the concrete surfaces after initial treatment the Permittees will  
24 continue to remove additional layers of concrete to achieve a clean debris surface. If a clean debris  
25 surface cannot be achieved then the Permittees will meet with Ecology to determine a path forward for  
26 closure. Resulting changes to this closure plan will be submitted to Ecology as a permit modification  
27 request in accordance with Permit Condition I.C.3.

28 **H.5.1.2 Confirmation of Soil Sample Results**

29 Soil sample results from the contract analytical laboratory will be reviewed to confirm that target analytes  
30 have met closure performance standards (Table H-5). Once it has been determined that soil sample results  
31 have met closure performance standards, then the soil beneath the 2401-W Building will be considered  
32 clean.

33 Once clean closure has been confirmed for the 2401-W Waste Storage Building DWMU, a closure  
34 certification will be prepared in accordance with Section H.5.3.

35 **H.5.2 Role of the Independent Qualified Registered Professional Engineer**

36 An IQRPE will be retained to provide certification of the closure as required by WAC 173-303-610(6).  
37 The IQRPE will be responsible for observing field activities and reviewing documents associated with  
38 clean closure of the 2401-W Building. At a minimum, the following field activities will be completed:

- 39
- 40 • Observe and/or review equipment removal activities and disposition records.
  - 41 • Review 2401-W Waste Storage Building visual inspection documentation.
  - 42 • Observe and/or review decontamination of the 2401-W Building concrete surface.
  - 43 • Verify that the concrete surface meets the “clean debris surface” standard.
  - Verify the locations of soil samples are as specified in the SAP.

- 1 • Observe and/or review soil sampling activities.
- 2 • Review sampling procedures and results.
- 3 • Observe and/or review contaminated environmental media removal (as applicable).
- 4 • Observe and/or review newly generated waste management and disposition records.
- 5 • Verify that closure activities were performed in accordance with this closure plan.

6 The IQRPE will record observations and reviews in a written report that will be retained in the operating  
7 record. The resulting report will be used to develop the clean closure certification, which will then be  
8 submitted to Ecology.

### 9 **H.5.3 Closure Certification**

10 Within 60 days of completion of closure of the 2401-W Building DWMU, a certification that the DWMU  
11 has been closed in accordance with the specifications in this closure plan will be submitted to Ecology by  
12 registered mail or other means that establish proof of receipt (including applicable electronic means). The  
13 certification will be signed by the Permittees and by the IQRPE.

14 At the time of the closure certification submittal, the Permittees will submit to Ecology information to  
15 support the closure certification. [WAC 173-303-610(6)]

16 The supporting information will include at least the following:

- 17 • All field notes and photographs related to closure activities.
- 18 • A description of any minor deviations from this closure plan and justification for these deviations.
- 19 • Documentation of the removal and final disposition of any unanticipated contaminated  
20 environmental media.
- 21 • Documentation of the removal and final disposition of any newly generated waste.
- 22 • All laboratory and/or field data, including sampling procedures, sampling locations, QA/QC  
23 samples, and COC procedures for all samples and measurements, including samples and  
24 measurements taken to determine background conditions and determine or confirm clean closure.
- 25 • A summary report that identifies and describes the data reviewed by the IQRPE, and tabulation of  
26 the analytical results of samples taken to determine and confirm clean closure performance  
27 standards were met.
- 28 • Description of the 2401-W Building DWMU appearance at completion of closure, including what  
29 parts of the former unit, if any, will remain after closure.

### 30 **H.6 CLOSURE SCHEDULE AND TIME FRAME**

31 Closure activities will take longer to complete<sup>1</sup> than 180 days after the effective date of the approved  
32 permit modification incorporating this closure plan. The permit modification request to extend completion  
33 of closure has set the revised date of closure completion by March 14, 2027. This request also had the  
34 required information on steps to be taken to prevent threats to human health and the environment.  
35 [WAC 173-303-610(4)(b)]

---

<sup>1</sup>The closure timeline was extended from March 14, 2024, to March 14, 2025, through approval of Class <sup>1</sup>1 Permit Modification PCN-2401WWSB-2024-01 was extended again from March 14, 2025, to March 14, 2026, through approval of Class <sup>1</sup>1 Permit Modification PCN-2401WWSB-2025-01. The closure timeline is extended from March 14, 2026, to March 14, 2027, through approval of Class <sup>1</sup>1 Permit Modification PCN-2401WWSB-2025-02. The permit modification incorporating this closure plan was issued on August 17, 2023 (8C.2023.3F). The original date for closure activity completion was March 14, 2024.

- 1 Should an unexpected event occur and an extension to the revised closure activity expiration date be  
 2 deemed necessary, a permit modification request will be submitted to Ecology for approval at least  
 3 30 days prior to the March 14, 2027, expiration date. [WAC 173-303-610(4)(c)]  
 4 The permit modification request will include the statement that closure activities, will of necessity, take  
 5 longer than the March 14, 2027, to complete, and the supporting basis for the statement. The permit  
 6 modification request will also include necessary information demonstrating that all steps to prevent  
 7 threats to HHE have been and will continue to be taken, including compliance with all applicable permit  
 8 requirements. [WAC 173-303-610(4)(b)]  
 9 The closure certification will be submitted to Ecology within 60 days following completion of closure  
 10 activities at the 2401-W Building DWMU (Table H-8 and Figure H-8).  
 11

**Table H-8 2401-W Waste Storage Building Dangerous Waste Management Unit  
Closure Schedule**

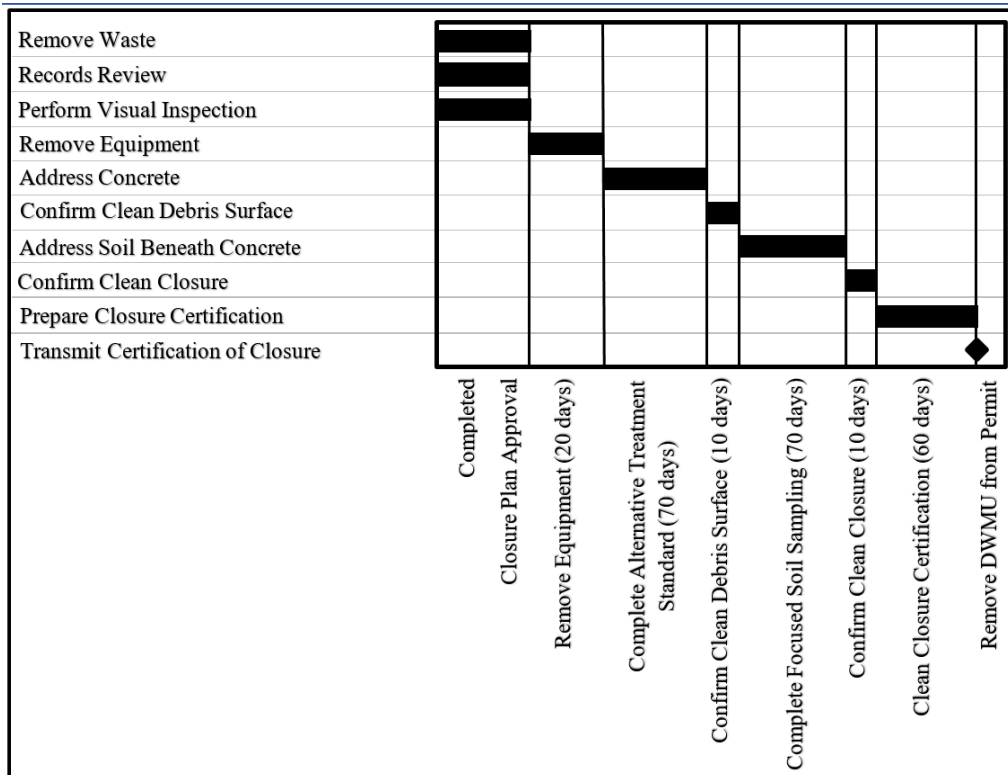
<b>Closure Activity Description</b>		
<b>Activity</b>	<b>Description</b>	<b>Duration</b>
<b>Closure Activities</b>		
Remove All Waste	Package and ship dangerous or mixed waste to a RCRA permitted facility for treatment, storage, or disposal.	Completed (Section H.3.1)
Records Review	Perform review of 2401-W Building container storage, operating, and inspection records.	Completed (Section H.3.2)
Perform Initial Visual Inspection of 2401-W Waste Storage Building	Inspect floor surface for dangerous and mixed waste-related staining.	Completed (Section H.3.2 & Attachment A)
	Inspect for visible holes, cracks, crevices, pits, or other breaches in structural integrity Identify focused sampling locations (as applicable).	
Remove Equipment and perform Final Visual Inspection of 2401-W Waste Storage Building	Remove equipment and material from the 2401-W Building and perform a final visual inspection of the floor surface (Section H.3.4).	20 Days
Decontaminate Floor Surface	Decontaminate 2401-W Building floor surface (Section H.3.5) to meet clean debris surface standard (Section H.5.1.1).	150 Days
Confirm Clean Debris Surface	After decontamination, visually inspect floors to verify that clean debris surface standard has been met. (Section H.5.1.1)	10 Days
Address Soil Beneath 2401-W Waste Storage Building	Perform focused sampling and analysis in accordance with SAP (Section H.4).	70 Days
	Perform data verification/validation and data quality assessment (Section H.4.5).	
	If necessary, remove contaminated environmental media (Section H.4.4.3).	

**Table H-8 2401-W Waste Storage Building Dangerous Waste Management Unit Closure Schedule**

Closure Activity Description		
Activity	Description	Duration
Confirm Closure Performance Standards for Soil	Review sample results from contract analytical laboratory. Ensure soil closure performance standards were met (Section H.3.9).	10 Days
Closure Certification		
Permittees and IQRPE Submit Closure Certification	Within 60 days of completion of closure activities; submit certification to Ecology that the DWMU has been closed in accordance with specifications in this closure plan (Section H.5.3).	60 Days

Reference: WAC 173-303-610, Dangerous Waste Regulations, *Closure and post-closure*.

1



**Figure H-8 2401-W Building Closure Schedule Activities**

2  
3  
4  
5  
6  
7

**H.7 CLOSURE COSTS**

An annual report outlining updated projections of anticipated closure costs for the Hanford Facility treatment, storage, and disposal units having final status is not required per Hanford Facility Permit Condition II.H.

1 **H.8 REFERENCES**

2 17-AMRP-0217, 2017, “Dangerous Waste Management Unit (DWMU) 277-T Building Closure Plan  
3 Comment Disposition, and Performance Standards for Future Solid Waste Operations Complex  
4 (SWOC) Closure Plans” (letter to Alexandra K. Smith, Nuclear Waste Program, from Joe R.  
5 Franco), DOE-RL, Richland, Washington, July 12. Available at:  
6 <https://pdw.hanford.gov/document/0069231H>.

7 17-NWP-100, 2017, “Dangerous Waste Management Unit (DWMU) 277-T Building Closure Plan  
8 Comment Disposition and Performance Standards for Future Solid Waste Operations Complex  
9 (SWOC) Closure Plans” (letter to Joe Franco, DOE-RL, from Suzanne Dahl), Nuclear Waste  
10 Program, Ecology, Richland, Washington, August 14. Available at:  
11 <https://pdw.hanford.gov/document/0069016H>.

12 21-NWP-033, 2021, “Approval of Permit Change Notices and Part A Forms to Transfer Co-Operator  
13 Responsibilities for the *Hanford Facility Resource Conservation and Recovery Act Permit,*  
14 *Dangerous Waste Portion, Revision 8c, for the Treatment, Storage, and Disposal of Dangerous*  
15 *Waste (Site-wide Permit), WA7890008967”* (letter to Brian T. Vance, DOE-RL/ORP and  
16 Scott Sax, CPCCo, from Stephanie Schleif), Nuclear Waste Program, Ecology, Richland,  
17 Washington, March 15. Available at: <https://pdw.hanford.gov/document/AR-10235>.

18 40 CFR § 268, *Land Disposal Restrictions*, Code of Federal Regulations. Available at:  
19 <http://www.gpo.gov/fdsys/pkg/CFR-2010-title40-vol26/xml/CFR-2010-title40-vol26->  
20 [part268.xml](http://www.gpo.gov/fdsys/pkg/CFR-2010-title40-vol26/xml/CFR-2010-title40-vol26-).

21 268.45, *Treatment standards for hazardous debris*.

22 ASTM International, 2017, *Annual Book of ASTM Standards*, ASTM International, West Conshohocken,  
23 Pennsylvania.

24 DOE/RL-92-24, 2001, *Hanford Site Background: Part 1, Soil Background for Nonradioactive Analytes,*  
25 *Revision 4, 2 Volumes*, DOE-RL, Richland, Washington. Available at:  
26 <https://pdw.hanford.gov/document/0096062>.

27 <https://pdw.hanford.gov/document/0096061>.

28 DOE/RL-94-02, 2014, *Hanford Emergency Management Plan*, DOE-RL, Richland, Washington.  
29 Available at:  
30 [https://fortress.wa.gov/ecy/nwp/permitting/hdwp/rev/8c/Attachments/Att\\_04\\_Em\\_Mgt.pdf](https://fortress.wa.gov/ecy/nwp/permitting/hdwp/rev/8c/Attachments/Att_04_Em_Mgt.pdf).

31 ECF-HANFORD-11-0038, 2012, *Soil Background for Interim Use at the Hanford Site*, Revision 0,  
32 CH2M HILL Plateau Remediation Company, Richland, Washington. Available at:  
33 <https://pdw.hanford.gov/document/0088381?>.

34 Ecology, 2013, “Issues Associated with Establishing Soil Cleanup Levels for Arsenic” (letter to  
35 Jane Hedges and John Price, Nuclear Waste Program, from Dave Bradley), Toxics Cleanup  
36 Program, Ecology, Olympia, Washington, June 11. Available at:  
37 <https://pdw.hanford.gov/document/1309180453?>.

38 Ecology, 2019, *Cleanup Levels and Risk Calculation (CLARC) Data Tables*, Toxics Cleanup Program,  
39 Ecology, Olympia, Washington. Available at:  
40 <https://fortress.wa.gov/ecy/clarc/CLARCHome.aspx>.

41 Ecology, EPA, and DOE, 1989, *Hanford Federal Facility Agreement and Consent Order*, 2 Volumes,  
42 as amended, Ecology, EPA, and DOE, Olympia, Washington. Available at:  
43 <https://www.hanford.gov/page.cfm/TriParty>.

- 1 Ecology Publication #94-111, 2005, *Guidance for Clean Closure of Dangerous Waste Units and*  
2 *Facilities*, as amended, Ecology, Olympia, Washington. Available at:  
3 <https://fortress.wa.gov/ecy/publications/documents/94111.pdf>.
- 4 EPA/240/B-06/001, 2006, *Guidance on Systematic Planning Using the Data Quality Objectives Process*,  
5 EPA QA/G-4, Office of Environmental Information, EPA, Washington, D.C. Available at:  
6 [http://www.epa.gov/sites/production/files/documents/guidance\\_systematic\\_planning\\_dqo\\_](http://www.epa.gov/sites/production/files/documents/guidance_systematic_planning_dqo_process.pdf)  
7 [process.pdf](http://www.epa.gov/sites/production/files/documents/guidance_systematic_planning_dqo_process.pdf).
- 8 EPA/240/R-02/005, 2002, *Guidance on Choosing a Sampling Design for Environmental Data Collection*  
9 *for Use in Developing a Quality Assurance Project Plan*, EPA QA/G-5S, Office of Environmental  
10 Information, EPA, Washington, D.C. Available at:  
11 <http://nepis.epa.gov/Exe/ZyPURL.cgi?Dockey=20011HKB.txt>.
- 12 USEPA-540-R-08-01, 2008, *National Functional Guidelines for Superfund Organic Methods Data*  
13 *Review*, USEPA Contract Laboratory Program, OSWER 9240.1-48, Office of Superfund  
14 Remedial Technology and Innovation, EPA, Washington, D.C. Available at:  
15 [http://www.epa.gov/sites/production/files/2015-03/documents/somnfg\\_0.pdf](http://www.epa.gov/sites/production/files/2015-03/documents/somnfg_0.pdf).
- 16 USEPA-540-R-10-011, 2010, *National Functional Guidelines for Inorganic Superfund Data Review*,  
17 USEPA Contract Laboratory Program, OSWER 9240.1-51, Office of Superfund Remedial  
18 Technology and Innovation, EPA, Washington, D.C. Available at:  
19 <http://www.epa.gov/sites/production/files/2015-03/documents/ism1nfg.pdf>.
- 20 EPA Docket No. RCRA-10-2013-0113, Consent Agreement and Final Order issued by EPA by  
21 Section 3008(a) of the RCRA, 42 U.S.C § 6928(a), June 26, 2013, EPA Region 10. Available at:  
22 <https://yosemite.epa.gov/OA/RHC/EPAAdmin.nsf/Filings/F8BB03C511F1D24A85257B98001B>  
23 [CAD0/\\$File/RCRA-10-2013-0113%20CAFO\\_OCR.pdf](https://yosemite.epa.gov/OA/RHC/EPAAdmin.nsf/Filings/F8BB03C511F1D24A85257B98001BCAD0/$File/RCRA-10-2013-0113%20CAFO_OCR.pdf).
- 24 Howard, P. H., R.S. Boethling, W. F. Jarvis, W. M. Meyland, and E.M. Michalenko, 1991, *Handbook of*  
25 *Environmental Degradation Rates*, Lewis Publishers, Chelsea, Michigan.
- 26 NIOSH, 2010, *NIOSH Pocket Guide to Chemical Hazards*, Department of Health and Human Services  
27 (Centers for Disease Prevention and Control and National Institute for Occupational Safety and  
28 Health), Washington, D.C. Available at: <https://www.cdc.gov/niosh/npg/default.html>.
- 29 RCW 70A.300, *Hazardous Waste Management*, Olympia, Washington. Available at:  
30 <http://apps.leg.wa.gov/RCW/default.aspx?cite=70.105>.
- 31 *Resource Conservation and Recovery Act of 1976*, 42 U.S.C. 6901, et seq. Available at:  
32 <https://www.epa.gov/laws-regulations/summary-resource-conservation-and-recovery-act>.
- 33 SW-846, 2015, *Test Methods for Evaluating Solid Waste: Physical/Chemical Methods*, Third Edition,  
34 Final Update V, Office of Solid Waste and Emergency Response, EPA, Washington, D.C.  
35 Available at: <https://www.epa.gov/hw-sw846>.
- 36 WAC 173-303, *Dangerous waste regulations*, Washington Administrative Code, Olympia, Washington.  
37 Available at: <http://apps.leg.wa.gov/WAC/default.aspx?cite=173-303>.
- 38 173-303-140, *Land disposal restrictions*.
- 39 173-303-170, *Requirements for generators of dangerous waste*.
- 40 173-303-200, *Conditions for exemption for a large quantity generator that accumulates*  
41 *dangerous waste*.
- 42 173-303-230, *Special conditions*.
- 43 173-303-310, *Security*.
- 44 173-303-350, *Contingency plan and emergency procedures*.

- 1 173-303-610, *Closure and post-closure.*
- 2 173-303-620, *Financial requirements.*
- 3 173-303-630, *Use and management of containers.*
- 4 173-303-830, *Permit changes.*
- 5 WAC 173-340, *Model Toxics Control Act Cleanup Regulations*, Washington Administrative Code,  
6 Olympia, Washington. Available at: <http://apps.leg.wa.gov/WAC/default.aspx?cite=173-340>.
- 7 173-340-740, *Unrestricted land use soil cleanup standards.*
- 8 173-340-747, *Deriving soil concentrations for groundwater protection.*
- 9 173-340-7493, *Site-Specific terrestrial ecological evaluation procedures.*
- 10 173-340-750, *Cleanup standards to protect air quality.*
- 11 173-340-900, *Tables.*

1  
2  
3  
4  
5

This page intentionally left blank.

1  
2  
3  
4  
5  
6

**2401-W WASTE STORAGE BUILDING  
ATTACHMENT A  
CWC 2401-W BUILDING VISUAL INSPECTION DOCUMENTATION**

1  
2  
3  
4  
5

This page intentionally left blank.

**CWC, 2401-W BUILDING**

**Purpose:**

A visual inspection walkdown of the CWC 2401-W Building to determine if there is any evidence of spills and/or leaks from waste packages containing dangerous that were and are stored at this location. The inspection was to identify and document by photographing any waste related staining of the storage area surface (i.e., concrete floor), and to denote any remaining waste related items.

The inspection was performed on August 14, 2013, by Brett M. Barnes, Environmental Compliance Officer (CHPRC).

**Results:**

No staining of any kind was identified on the storage area surface.

Housekeeping will be performed on the area prior to closure and the debris material will be removed.

**Signature/Date:**

Brett M. Barnes: Brett M Barnes 8/14/2013

1  
2  
3  
4  
5

This page intentionally left blank.