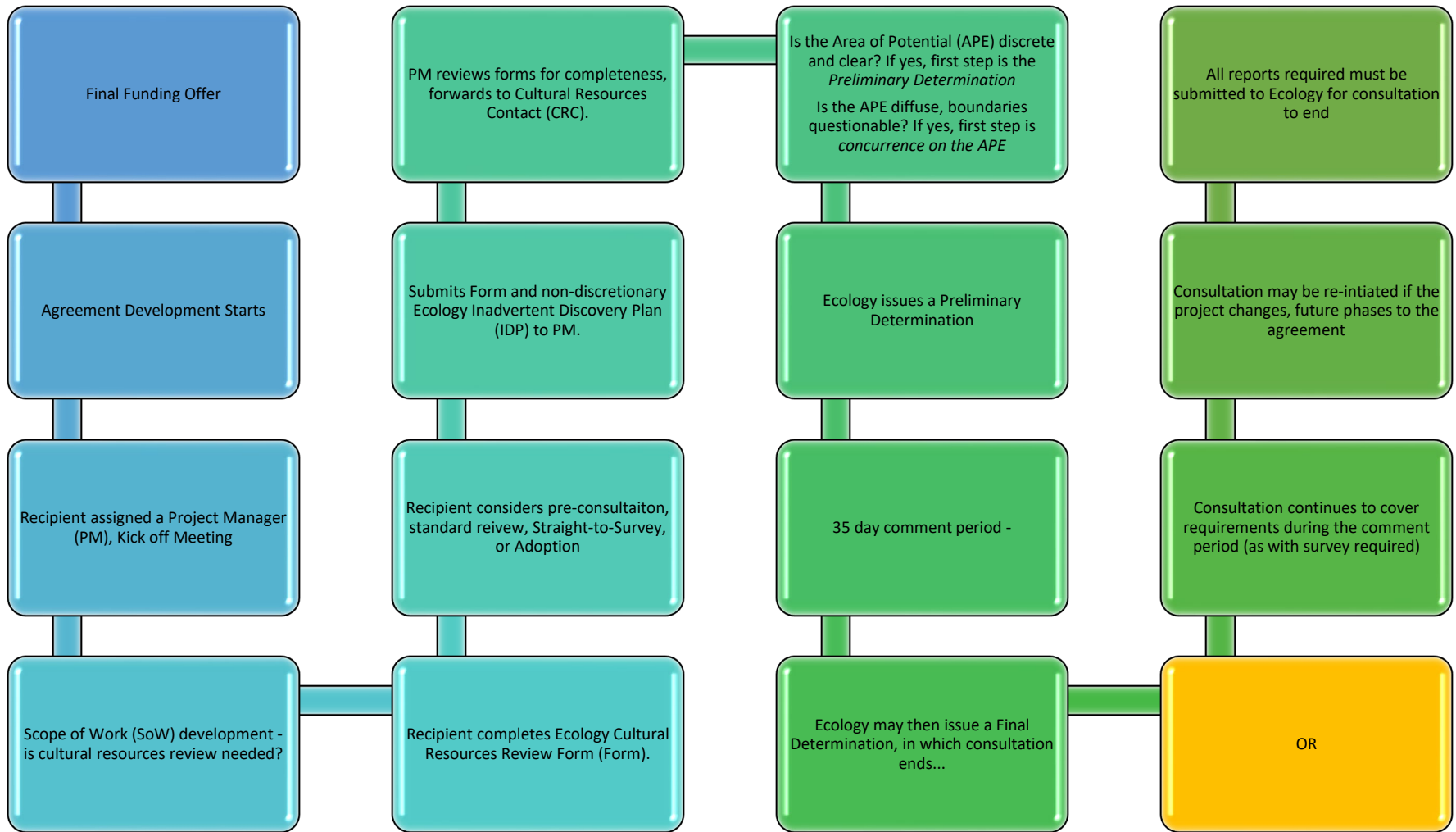


This simple diagram illustrates the Water Quality Program’s approach to cultural resources review. The diagram covers only historic properties. Additional requirements associated with human remain discoveries are not shown.



Questions? Contact your Cultural Resource Contact or Liz Ellis, Environmental and Cultural Resource Coordinator, Financial Management Section, Water Quality Program, Department of Ecology. (360) 628 4410 (Telework/Cell) liz.ellis@ecy.wa.gov