

Environmental Resources Report for the Pacwest Inc. Silicon Plant, Newport, Washington



Submitted to:

PACWEST INC A CANADIAN CORPORATION
Edmonton Alberta

Submitted by:

Environmental Assessment Services, LLC.
350 Hills St., Suite 112
Richland, WA 99354

August 2018

Table of Contents

Survey Design.....3
General Site Description3
Wildlife Surveys5
Wetland Surveys9
Plant Surveys9
References.....12
Attachment A13

Table 1. WDFW Priority Species in Pend Oreille County. 5
Table 2. Birds and mammals observed on or near the subject property. 6
Table 3. Sixteen focal species analyzed for the Washington Connected Landscapes Project..... 7
Table 4. Noxious weed species present at the PacWest site. 10

Figure 1. Overview map of PacWest site showing location of trash accumulations..... 4
Figure 2. Habitat core areas and habitat connectivity corridors identified in the Washington
Connected Landscapes Project. 8

Survey Design

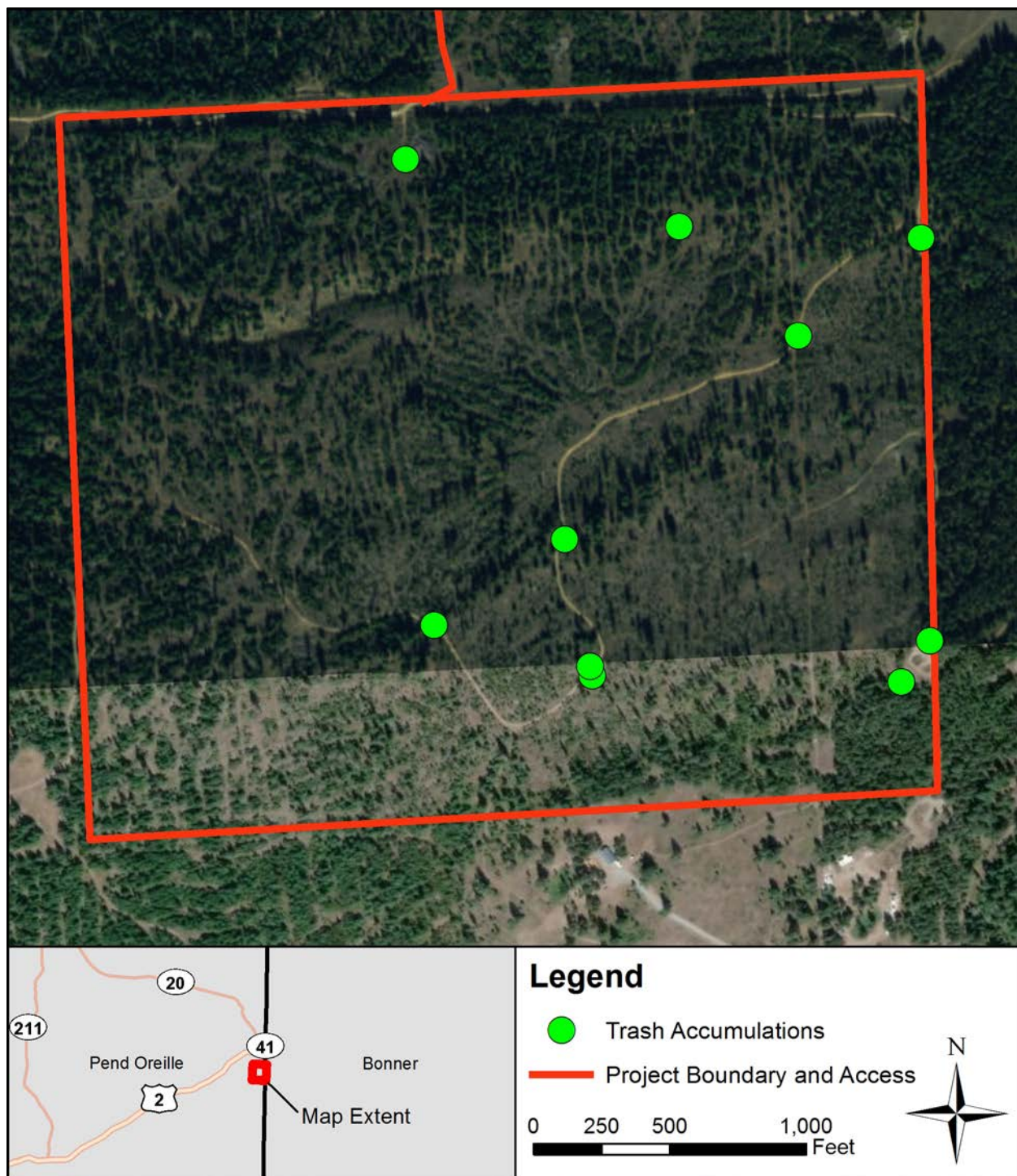
Environmental resources surveys conducted at the PacWest site were divided into three categories: wildlife, wetlands, and plants. Initial surveys for wetlands and wildlife were conducted by an Environmental Assessment Services (EAS) biologist on May 7-10, 2018, while the plant inventory and additional surveys for wetlands were completed by our subcontractor botanists (WESTECH) on June 22-24, 2018.

General Site Description

The PacWest site is located approximately one mile south of Newport, WA in Section 25, Township 31 North, Range 45 East and Section 30, Township 31 N, Range 46 East at an elevation of 2,350 feet above sea level. Two unpaved roads provide access to the site; one on the northern boundary of the property and one in the middle of the property. A transmission line runs parallel to the northern border of the project site.

Vegetation at the 190-acre site consists of open forestland and grass understory, which has been previously logged and/or thinned. More intact tree cover is present on the northwest corner of the property. Several remnant slash piles are scattered around the parcel. Soils are generally characterized as gravelly silt loam, with sandy loam to fine sandy loam in the northwest and southeast corners (NRCS Web Soil Survey – <https://websoilsurvey.sc.egov.usda.gov/App/WebSoilSurvey.aspx>). The subject property was littered with trash across the site. This includes locations of tires, engine blocks, cars, and significant trash piles spread across the property (Figure 1).

Figure 1. Overview map of PacWest site showing location of trash accumulations.



Wildlife Surveys

A review of the Washington State Department of Fish and Wildlife (WDFW) Priority Habitat and Species (PHS) database was performed on the subject property. A Townsend's big-eared bat communal roost site was documented in the vicinity of the property, at the township level, however no evidence of bat roosts was observed on the property during site visits. Table 1 lists the Priority Species documented in Pend Oreille County by the WDFW (WDFW 2016). Table 2 presents the birds and mammals that were observed on or near the subject property during site visits conducted in May of 2018.

Table 1. WDFW Priority Species in Pend Oreille County.

	Species	State Status	Federal Status
Fishes	bull trout/ dolly varden (<i>Salvelinus confluentus</i>)	Candidate	Threatened
	kokanee (<i>Oncorhynchus nerka</i>)		
	pygmy whitefish (<i>Prosopium coulterii</i>)	Sensitive	
	rainbow trout/ steelhead/ inland tedband trout (<i>Oncorhynchus mykiss</i>)	Candidate	Threatened
	Westslope cutthroat (<i>Oncorhynchus clarki lewisi</i>)		
Amphibians	Columbia spotted frog (<i>Rana luteiventris</i>)	Candidate	
	western toad (<i>Anaxyrus boreas</i>)	Candidate	
Birds	American white pelican (<i>Pelecanus erythrorhynchos</i>)	Endangered	
	common loon (<i>Gavia immer</i>)	Sensitive	
	western grebe (<i>Aechmophorus occidentalis</i>)	Candidate	
	E WA breeding concentrations of: grebes (Podicipedidae), cormorants (Phalacrocoracidae)		
	E WA breeding: terns (Laridae)		
	great blue heron (<i>Ardea herodias</i>)		
	cavity-nesting ducks: wood duck (<i>Aix sponsa</i>), Barrow's goldeneye (<i>Bucephala islandica</i>), common goldeneye (<i>B. clangula</i>), Bufflehead (<i>B. albeola</i>), hooded merganser (<i>Lophodytes cucullatus</i>)		
	harlequin duck (<i>Histrionicus histrionicus</i>)		
	waterfowl concentrations (Anatidae)		
	golden eagle (<i>Aquila chrysaetos</i>)	Candidate	
	northern goshawk (<i>Accipiter gentilis</i>)	Candidate	
	dusky grouse (<i>Dendragapus obscurus</i>)		

	E Wa breeding occurrences of: phalaropes (<i>Phalaropus spp.</i>), stilts (<i>Himantopus spp.</i>) and avocets (<i>Recurvirostra spp.</i>)		
	flamulated owl (<i>Psilosops flammeolus</i>)	Candidate	
	Vaux's swift (<i>Chaetura vauxi</i>)	Candidate	
	black-backed woodpecker (<i>Picoides arcticus</i>)	Candidate	
	Lewis' woodpecker (<i>Melanerpes lewis</i>)	Candidate	
	Pileated woodpecker (<i>Hylatomus pileatus</i>)	Candidate	
Mammals	roosting concentrations of: big-brown bat (<i>Eptesicus fuscus</i>), byotis bats (<i>Myotis sp.</i>), pallid bat (<i>Antrozous pallidus</i>)		
	Townsend's big-eared bat (<i>Corynorhinus townsendii</i>)	Candidate	
	fisher (<i>Pekania pennanti</i>)	Endangered	Species of Concern
	gray wolf (<i>Canis lupus</i>)	Endangered	Endangered
	grizzly bear (<i>Ursus arctos horribilis</i>)	Endangered	Threatened
	Canada lynx (<i>Lynx canadensis</i>)	Threatened	Threatened
	pine marten (<i>Martes americana</i>)		
	wolverine (<i>Gulo gulo</i>)	Candidate	Candidate
	bighorn sheep (<i>Ovis canadensis</i>)		
	moose (<i>Alces alces</i>)		
	mountain goat (<i>Oreamnos americanus</i>)		
	Northwest white-tailed deer (<i>Odocoileus virginianus ochrourus</i>)		
	elk (<i>Cervus elaphus</i>)		
	Rocky Mountain mule deer (<i>Odocoileus hemionus hemionus</i>)		
woodland caribou (<i>Rangifer tarandus caribou</i>)	Endangered	Endangered	
Invertebrates	silver-bordered fritillary (<i>Boloria selene</i>)	Candidate	

Table 2. Birds and mammals observed on or near the subject property.

Scientific Name	Common Name	Threatened or Endangered Status
<i>Turdus migratorius</i>	American robin	N/A
<i>Spizelloides arborea</i>	American tree sparrow	N/A
<i>Spizella passerina</i>	chipping sparrow	N/A
<i>Zenaida macroura</i>	mourning dove	N/A
<i>Corvus corax</i>	raven	N/A
<i>Meleagris gallopavo</i>	wild turkey	N/A
<i>Haliaeetus leucocephalus</i>	bald eagle	N/A

<i>Leuconotopicus villosus</i>	hairy woodpecker	N/A
<i>Dryocopus pileatus</i>	pileated woodpecker	N/A
<i>Tamias amoenus</i>	yellow-pine chipmunk	N/A
<i>Tamiasciurus hudsonicus</i>	red squirrel	N/A
<i>Odocoileus virginianus</i>	white-tailed deer	N/A
<i>Alces alces</i>	moose	N/A
<i>Canis latrans</i>	coyote	N/A
<i>Procyon lotor</i>	North American raccoon	N/A
<i>Pseudacris regilla</i>	Pacific treefrog	N/A

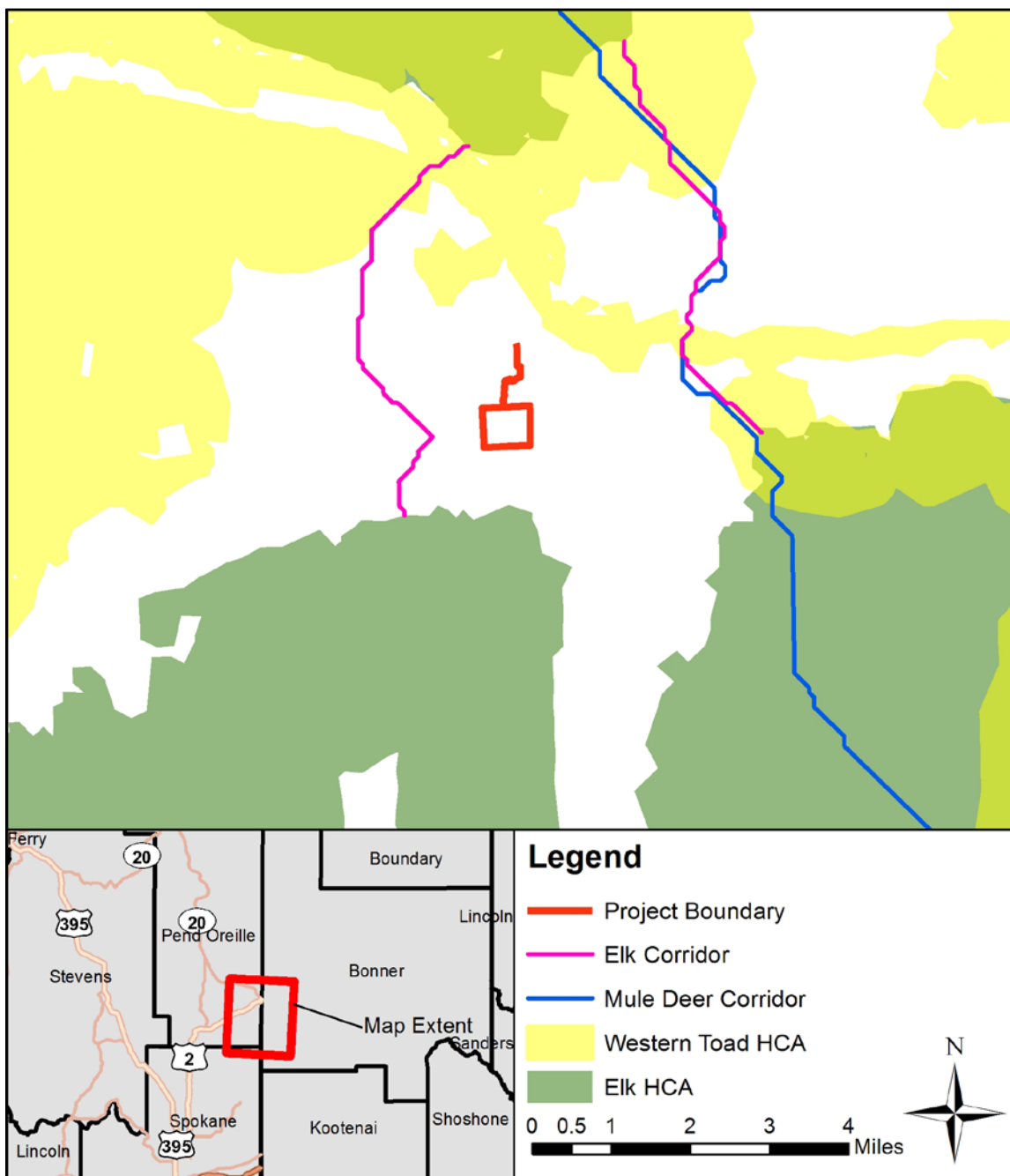
The property falls within the Pacific Flyway for migratory waterfowl. Although the area lacks aquatic habitat, open grassy areas could be utilized as stopover habitat by migrating bird species, such as Canada geese (*Branta canadensis*). The property is situated between the Colville National Forest and Coeur d'Alene National Forest; two relatively undisturbed and undeveloped areas compared to the surrounding landscapes. As such, the property could be used by wildlife species when migrating between these areas of higher quality habitat. A review of the Washington Connected Landscapes Project: Statewide Analysis (WHCWG 2010), which identified habitat core areas (HCA) and habitat connectivity corridors (least cost pathways) for a select group of focal species (Table 3), showed no HCAs for focal species within the project area. HCAs are present within one mile of the property for western toad (*Anaxyrus boreas*) and elk (*Cervus elaphus*) (Figure 2). No habitat connectivity corridors identified by this model intersected the project area; a corridor for elk is within one mile of the project area while another corridor for mule deer (*Odocoileus hemionus*) is within two miles of the project area (Figure 2).

Table 3. Sixteen focal species analyzed for the Washington Connected Landscapes Project.

Common Name	Scientific Name
sharp-tailed grouse	<i>Tympanuchus phasianellus</i>
greater sage-grouse	<i>Centrocercus urophasianus</i>
American badger	<i>Taxidea taxus</i>
black-tailed jackrabbit	<i>Lepus californicus</i>
white-tailed jackrabbit	<i>Lepus townsendii</i>
mule deer	<i>Odocoileus hemionus</i>
bighorn sheep	<i>Ovis canadensis</i>
western gray squirrel	<i>Sciurus griseus</i>
American black bear	<i>Ursus americanus</i>
elk	<i>Cervus elaphus</i>
northern flying squirrel	<i>Glaucomys sabrinus</i>
western toad	<i>Anaxyrus boreas</i>

American marten	<i>Martes americana</i>
Canada lynx	<i>Lynx canadensis</i>
mountain goat	<i>Oreamnos americanus</i>
wolverine	<i>Gulo gulo</i>

Figure 2. Habitat core areas and habitat connectivity corridors identified in the Washington Connected Landscapes Project.



Wetland Surveys

There are no streams or wetlands on the property. This was determined by reviewing state hydrography data and National Wetlands Inventory (NWI) mapping, and later confirmed during the field surveys in May and June. The nearest stream is approximately 1/4-mile north of the site and oriented in an east-west direction, as to not intercept the property boundary.

Plant Surveys

Botanists completed a visual, pedestrian-based inventory of the property and documented plant species occurrence by creating a list of observed species as encountered. Plants that were not readily identifiable in the field, were collected and later keyed to the species level using the following regional floras: *Flora of the Pacific Northwest* (Hitchcock and Cronquist 1973), *Vascular plants of Montana* (Dorn 1984), and *Montana Manual of Vascular Plants* (Lesica 2012). The same methodology was used to record noxious weed species. General habitat descriptions were made during the survey to assess potential suitable habitat for rare, threatened, or endangered plant species.

A total of 183 plant species were documented on the property. The plant species list is provided as Attachment A. No rare, threatened, or endangered plant species were observed, nor was any suitable habitat for federal or state listed plant species identified. Small areas of relatively intact and marginally undisturbed forestland were found, which may have the potential to provide suitable habitat for some rare plant species in the future, but which do not presently have the necessary characteristics. Habitat types that tend to contain features suitable for rare plants in the area, such as wet or mesic meadows, streams, wetlands, or calcic rock outcrops, are not present on the property. Additionally, past logging disturbance and the introduction of invasive species has altered the vegetative community at the site and impacted habitat suitability.

Ten listed noxious weed species were found on the property. Table 4 lists the weed species present, both by scientific name (including synonyms) and common name, and the weed designation for Pend Oreille County and Washington State. There were no Category I (Pend Oreille County weed list) or Class A (Washington State weed list) weeds recorded on the property.

Table 4. Noxious weed species present at the PacWest site.

Scientific Name	Common Name	Category ^a	Weed Class ^b
<i>Centaurea maculosa</i> (<i>Centaurea stoebe</i> , <i>Centaurea biebersteinii</i>)	spotted knapweed	II	B
<i>Cirsium arvense</i>	Canada thistle	II	C
<i>Cynoglossum officinale</i>	common hound's-tongue	II	B
<i>Hieracium aurantiacum</i>	orange hawkweed	II	B
<i>Hieracium caespitosum</i> (<i>Hieracium pratense</i>)	meadow hawkweed	II	B
<i>Hypericum perforatum</i>	common St. John's-wort	II	C
<i>Leucanthemum vulgare</i> (<i>Chrysanthemum leucanthemum</i>)	oxeye daisy	II	C
<i>Linaria dalmatica</i>	Dalmatian toadflax	II	B
<i>Potentilla recta</i>	sulphur cinquefoil	II	B
<i>Tanacetum vulgare</i>	common tansy	II	C
<p>Footnotes:</p> <p>^a: Pend Oreille County weed category descriptions (obtained from the 2018 Proposed Pend Oreille County Noxious Weed List, https://pendoreilleco.org/your-government/noxious-weed-department/) Category I: Weeds occur at a few sites within the County, area considered an economic threat, and the landowner will control them annually to prevent seed production until eradication is secured. Category II: Weeds in this category are mostly common in the county and will be controlled on the right-of-ways and public spaces as necessary. Landowners will be assisted with cost-share funds, as available, to manage weeds on their properties with the overall goal of containment and reducing the negative impact to an acceptable level. Category III: Noxious weeds NOT currently found growing in Pend Oreille County, but will be monitored and controlled if found.</p> <p>^b: Washington State weed class descriptions (obtained from Washington State Noxious weed control board website, https://www.nwcb.wa.gov/classes-of-noxious-weeds) Class A: Non-native species whose distribution in Washington State is still limited. Eradication of all Class A plants is required by law. Class B: Non-native species whose distribution is limited to portions of Washington State. Mandatory control is required in regions where the species are not yet widespread. In regions where the species is already abundant, control is decided at the local level. Class C: Noxious weeds that are widespread in Washington and are of special interest to the agricultural industry. Class C status allows a county to enforce control if beneficial to the county.</p>			

Numerous Category II weeds with a Class B or Class C state designation were widespread on the property. Spotted knapweed (*Centaurea maculosa*) and St. John's-wort (*Hypericum perforatum*) were the two most common weeds encountered; they were widespread along roads and in open and recently disturbed areas. Houndstongue (*Cynoglossum officinale*) was common and particularly abundant around slash piles. Oxeye daisy (*Leucanthemum vulgare*) was quite abundant and particularly common along roads and more mesic sites. Sulphur cinquefoil (*Potentilla recta*) was mostly found along the roads and only occasionally spotted in other recently disturbed sites. Dalmatian toadflax (*Linaria dalmatica*) was located in only a few

random areas; these were some of the dryer areas along the western part of the property. The hawkweeds (*Hieracium aurantiacum* and *H. caespitosum*) were widely scattered throughout the property. They were not particularly abundant at any one location and were found most often where trees were left in place or starting to reestablish. Canada thistle (*Cirsium arvense*) was found in more mesic areas, such as a drainage in the south east part of the property and scattered in other locations. Common tansy (*Tanacetum vulgare*) was only recorded at one location on the eastern part of the property, where there were only a couple plants spotted. Few to no weeds were observed where there was significant tree cover left intact, as in the northwest portion of the property. Most of the rest of the property had one or more of the Class II weeds.

Due to the widespread distribution and presence of Category II noxious weeds across the property, a geographic information system (GIS) shapefile with weed locations was not prepared. The abundance of noxious weeds on the property would have required detailed mapping beyond the scope of this project.

References

Dorn, R.D. 1984. *Vascular plants of Montana*. Mountain West Publishing, Cheyenne, Wyoming. 176 p.

Hitchcock, C.L. and A. Cronquist. 1973. *Flora of the Pacific Northwest*. University of Washington Press, Seattle. 730p.

Lesica, P. 2012. *Manual of Montana Vascular Plants*. Botanical Research Institute of Texas Press. Fort Worth, Texas. 771 p.

Washington Department of Fish and Wildlife. 2008. Priority Habitat and Species List. Olympia, Washington. 296 p.

Washington Wildlife Habitat Connectivity Working Group (WHCWG). 2010. Washington Connected Landscapes Project: Statewide Analysis. Washington Departments of Fish and Wildlife, and Transportation, Olympia, WA. 209p.

Attachment A
Plant Species List

Binomial	Class	Code	Common Name
<i>Abies lasiocarpa</i> (<i>Abies bifolia</i>)	NT	Abi las	Subalpine fir
<i>Acer glabrum</i>	NS	Ace gla	Rocky Mountain maple
<i>Achillea millefolium</i>	NPF	Ach mil	Common yarrow
<i>Adenocaulon bicolor</i>	NPF	Ade bic	Trail-plant
<i>Agoseris glauca</i>	NPF	Ago gla	Prairie agoseris
<i>Agropyron repens</i> (<i>Elymus repens</i> , <i>Elytrigia repens</i>)	IPG	Agr rep	Quackgrass
<i>Agropyron smithii</i> (<i>Elymus smithii</i> , <i>Pascopyrum smithii</i>)	NPGc	Agr smi	Western wheatgrass
<i>Agropyron spicatum</i> (<i>Elymus spicatus</i> , <i>Pseudoroegneria spicata</i>)	NPGc	Agr spi	Bluebunch wheatgrass
<i>Agrostis capillaris</i> (<i>Agrostis tenuis</i>)	IPG	Agr cap	Colonial bentgrass
<i>Agrostis stolonifera</i> (<i>Agrostis alba</i>)	IPG	Agr sto	Redtop
<i>Alnus rubra</i>	NT	Aln rub	Red alder
<i>Alopecurus pratensis</i>	IPG	Alo pra	Tufted meadow foxtail
<i>Amelanchier alnifolia</i>	NS	Ame aln	Western serviceberry
<i>Anaphalis margaritacea</i>	NPF	Ana mar	Pearly-everlasting
<i>Antennaria racemosa</i>	NPF	Ant rac	Raceme pussytoes
<i>Antennaria rosea</i>	NPF	Ant ros	Rosy pussytoes
<i>Apocynum androsaemifolium</i>	NPF	Apo and	Spreading dogbane
<i>Apocynum cannabinum</i>	NPF	Apo can	Hemp dogbane
<i>Aralia nudicaulis</i>	NPF	Ara nud	Wild sarsaparilla
<i>Arctostaphylos uva-ursi</i>	NS	Arc uva	Kinnikinnick
<i>Arnica cordifolia</i>	NPF	Arn cor	Heartleaf arnica
<i>Berberis aquifolium</i> (<i>Mahonia aquifolium</i>)	NS	Ber aqu	Hollyleaved barberry
<i>Berberis repens</i> (<i>Mahonia repens</i>)	NPF	Ber rep	Creeping Oregon-grape
<i>Betula occidentalis</i>	NT	Bet occ	Water birch
<i>Boechera holboellii</i> (<i>Arabis holboellii</i>)	NABF	Boe hol	Holboell's rockcress
<i>Bromus ciliatus</i>	NPGc	Bro cil	Fringed brome
<i>Bromus inermis</i>	IPG	Bro ine	Smooth brome
<i>Bromus japonicus</i> (<i>Bromus arvensis</i>)	IAG	Bro jap	Japanese brome
<i>Bromus tectorum</i>	IAG	Bro tec	Cheatgrass brome
<i>Calamagrostis purpurascens</i>	NPGc	Cal pur	Purple reedgrass
<i>Calamagrostis rubescens</i>	NPGc	Cal rub	Pinegrass
<i>Campanula rotundifolia</i>	NPF	Cam rot	Roundleaf harebell
<i>Canadanthus modestus</i> (<i>Aster modestus</i>)	NPF	Can mod	Few-flowered aster
<i>Carex bebbii</i>	NPGc	Car beb	Bebb's sedge
<i>Carex geveri</i>	NPGc	Car gey	Elk sedge
<i>Carex inops</i> (<i>Carex heliophila</i> , <i>Carex pensylvanica</i>)	NPGc	Car ino	Sun sedge
<i>Carex microptera</i>	NPGc	Car mic	Small-winged sedge
<i>Castilleja lutescens</i>	NPF	Cas lut	Yellowish paintbrush
<i>Ceanothus velutinus</i>	NS	Cea vel	Mountain balm
<i>Centaurea maculosa</i> (<i>Centaurea stoebe</i> , <i>Centaurea biebersteinii</i>)	IPF	Cen mac	Spotted knapweed*
<i>Chimaphila umbellata</i>	NPF	Chi umb	Common pipsissewa
<i>Circaea alpina</i>	NPF	Cir alp	Enchanter's nightshade
<i>Cirsium arvense</i>	IPF	Cir arv	Canada thistle*
<i>Cirsium vulgare</i>	IABF	Cir vul	Bull thistle
<i>Clarkia pulchella</i>	NABF	Cla pul	Ragged robin
<i>Claytonia lanceolata</i>	NPF	Cla lan	Lanceleaf springbeauty
<i>Clintonia uniflora</i>	NPF	Cli uni	Queen's cup beadlily
<i>Collinsia parviflora</i>	NABF	Col par	Blue-eyed Mary
<i>Collomia linearis</i>	NABF	Col lin	Narrow-leaf collomia
<i>Coptis occidentalis</i>	NPF	Cop occ	Western goldthread
<i>Corallorhiza maculata</i>	NPF	Cor mac	Spotted coral-root
<i>Cornus canadensis</i>	NPF	Cor can	Bunchberry dogwood
<i>Cryptantha affinis</i>	NABF	Cry aff	Slender cryptantha

<i>Cynoglossum officinale</i>	IABF	Cyn off	Common hound's-tongue*
<i>Cypripedium montanum</i>	NPF	Cyp mon	Mountain lady's-slipper
<i>Cystopteris fragilis</i>	FA	Cys fra	Brittle bladder-fern
<i>Dactylis glomerata</i>	IPG	Dac glo	Orchard-grass
<i>Danthonia spicata</i>	NPGc	Dan spi	Poverty oatgrass
<i>Deschampsia danthonioides</i>	NAG	Des dan	Annual hairgrass
<i>Dianthus armeria</i>	IABF	Dia arm	Deptford pink
<i>Dodecatheon conjugens</i>	NPF	Dod con	Slimpod shooting star
<i>Elymus virginicus</i>	NPGc	Ely vir	Virginia wildrye
<i>Epilobium brachycarpum</i> (<i>Epilobium paniculatum</i>)	NABF	Epi bra	Autumn willow-herb
<i>Equisetum arvense</i>	FA	Equ arv	Common horsetail
<i>Erigeron divergens</i>	NABF	Eri div	Spreading fleabane
<i>Erigeron strigosus</i>	NABF	Eri str	Branching fleabane
<i>Eriogonum heracleoides</i>	NPF	Eri her	Parsnipflower buckwheat
<i>Festuca idahoensis</i>	NPGc	Fes ida	Idaho fescue
<i>Festuca occidentalis</i>	NPGc	Fes occ	Western fescue
<i>Filago arvensis</i> (<i>Logfia arvensis</i>)	IABF	Fil arv	Field filago
<i>Fragaria vesca</i>	NPF	Fra ves	Woods strawberry
<i>Fragaria virginiana</i>	NPF	Fra vir	Virginia strawberry
<i>Gaillardia aristata</i>	NPF	Gai ari	Blanket-flower
<i>Galium aparine</i>	NABF	Gal apa	Cleavers
<i>Gentiana affinis</i>	NPF	Gen aff	Pleated gentian
<i>Geum triflorum</i>	NPF	Geu tri	Prairiesmoke
<i>Gymnocarpium dryopteris</i>	FA	Gym dry	Oakfern
<i>Heuchera cylindrica</i>	NPF	Heu cyl	Roundleaf alumroot
<i>Hieracium albiflorum</i>	NPF	Hie alb	White-flowered hawkweed
<i>Hieracium aurantiacum</i>	IPF	Hie aur	Orange hawkweed*
<i>Hieracium caespitosum</i> (<i>Hieracium pratense</i>)	IPF	Hie cae	Meadow hawkweed*
<i>Hieracium scouleri</i> (<i>Hieracium albertinum</i> , <i>Hieracium cynoglossoides</i>)	NPF	Hie sco	Woolly hawkweed
<i>Holodiscus discolor</i>	NS	Hol dis	Creambush oceanspray
<i>Hypericum perforatum</i>	IPF	Hyp per	Common St. John's-wort*
<i>Ipomopsis aggregata</i> (<i>Gilia aggregata</i>)	NABF	Ipo agg	Scarlet gilia
<i>Koeleria macrantha</i> (<i>Koeleria cristata</i> , <i>Koeleria nitida</i> , <i>Koeleria pyramidata</i>)	NPGc	Koe mac	Prairie junegrass
<i>Lactuca serriola</i>	IABF	Lac ser	Prickly lettuce
<i>Lapsana communis</i>	IABF	Lap com	Nipplewort
<i>Larix occidentalis</i>	NT	Lar occ	Western larch
<i>Leucanthemum vulgare</i> (<i>Chrysanthemum leucanthemum</i>)	IPF	Leu vul	Oxeye daisy*
<i>Lilium columbianum</i>	NPF	Lil col	Tiger lily
<i>Linaria dalmatica</i>	IPF	Lin dal	Dalmatian toadflax*
<i>Linnaea borealis</i>	NPF	Lin bor	Western twinflower
<i>Lomatium triternatum</i>	NPF	Lom tri	Nine-leaf lomatium
<i>Lonicera ciliosa</i>	NS	Lon cil	Orange honeysuckle
<i>Lotus corniculatus</i>	IPF	Lot cor	Birdsfoot trefoil
<i>Lupinus polyphyllus</i> var. <i>polyphyllus</i> (<i>Lupinus polyphyllus</i>)	NPF	Lup polp	Bigleaf lupine
<i>Lupinus sericeus</i>	NPF	Lup ser	Silky lupine
<i>Luzula campestris</i> (<i>Luzula multiflora</i>)	NPGc	Luz cam	Field woodrush
<i>Madia glomerata</i>	NABF	Mad glo	Cluster tarweed
<i>Matricaria matricarioides</i> (<i>Matricaria discoidea</i>)	NABF	Mat mat	Pineapple weed
<i>Melampyrum lineare</i>	NABF	Mel lin	Narrow-leaved cow-wheat
<i>Microseris nutans</i>	NPF	Mic nut	Nodding microseris
<i>Microsteris gracilis</i>	NABF	Mic gra	Pink microsteris
<i>Myosotis micrantha</i> (<i>Myosotis stricta</i>)	IABF	Myo mic	Blue scorpion-grass
<i>Navarretia divaricata</i>	NABF	Nav div	Mountain navarretia
<i>Oryzopsis asperifolia</i>	NPGc	Ory asp	Roughleaf ricegrass

<i>Osmorhiza chilensis</i> (<i>Osmorhiza berteroi</i>)	NPF	Osm chi	Mountain sweetroot
<i>Penstemon confertus</i>	NPF	Pen con	Yellow penstemon
<i>Phacelia hastata</i>	NPF	Pha has	Silverleaf phacelia
<i>Phleum pratense</i>	IPG	Phl pra	Common timothy
<i>Phlox hoodii</i>	NPF	Phl hoo	Hood's phlox
<i>Phlox speciosa</i>	NPF	Phl spe	Showy flox
<i>Physocarpus malvaceus</i>	NS	Phy mal	Mallow ninebark
<i>Pinus contorta</i>	NT	Pin con	Lodgepole pine
<i>Pinus monticola</i>	NT	Pin mon	Western white pine
<i>Pinus ponderosa</i>	NT	Pin pon	Ponderosa pine
<i>Plantago lanceolata</i>	IPF	Pla lan	Buckhorn plantain
<i>Plantago major</i>	IPF	Pla maj	Common plantain
<i>Plantago patagonica</i>	NABF	Pla pat	Woolly plantain
<i>Poa bulbosa</i>	IPG	Poa bul	Bulbous bluegrass
<i>Poa compressa</i>	IPG	Poa com	Canada bluegrass
<i>Poa fendleriana</i> (<i>Poa cusickii</i>)	NPGc	Poa fen	Mutton bluegrass
<i>Poa palustris</i>	IPG	Poa pal	Fowl bluegrass
<i>Poa pratensis</i>	IPG	Poa pra	Kentucky bluegrass
<i>Poa secunda</i> (<i>Poa canbyi</i> , <i>Poa gracillima</i> , <i>Poa juncifolia</i> , <i>Poa nevadensis</i> , <i>Poa sandbergii</i> , <i>Poa scabrella</i>)	NPGc	Poa sec	Sandberg's bluegrass
<i>Populus tremuloides</i>	NT	Pop tre	Quaking aspen
<i>Potentilla argentea</i>	IPF	Pot are	Silvery cinquefoil
<i>Potentilla gracilis</i>	NPF	Pot gra	Slender cinquefoil
<i>Potentilla recta</i>	IPF	Pot rec	Sulphur cinquefoil*
<i>Prunella vulgaris</i>	NPF	Pru vul	Self-heal
<i>Pseudotsuga menziesii</i>	NT	Pse men	Douglas-fir
<i>Psilocarphus brevissimus</i>	NABF	Psi bre	Dwarf woollyheads
<i>Pteridium aquilinum</i>	FA	Pte aqu	Brakenfern
<i>Pterospora andromedea</i>	NPF	Pte and	Woodland pinedrops
<i>Pyrola asarifolia</i>	NPF	Pyr asa	Pink wintergreen
<i>Pyrola picta</i>	NPF	Pyr pic	White-vein wintergreen
<i>Ranunculus uncinatus</i>	NPF	Ran uni	Little buttercup
<i>Rosa woodsii</i>	NS	Ros woo	Wood's rose
<i>Rubus leucodermis</i>	NS	Rub leu	Black raspberry
<i>Rubus parviflorus</i>	NS	Rub par	Thimbleberry
<i>Rumex acetosella</i>	IPF	Rum ace	Sheep sorrel
<i>Salix scouleriana</i>	NS	Sal sco	Scouler willow
<i>Sambucus nigra</i> ssp. <i>cerulea</i> (<i>Sambucus cerulea</i>)	NS	Sam nige	Blue elderberry
<i>Sanguisorba annua</i> (<i>Sanguisorba occidentalis</i>)	NABF	San ann	Annual burnet
<i>Senecio integerrimus</i>	NPF	Sen int	Western groundsel
<i>Senecio streptanthifolius</i> (<i>Packera streptanthifolia</i>)	NPF	Sen str	Rocky Mountain butterweed
<i>Silene menziesii</i>	NPF	Sil men	Menzie's silene
<i>Sisymbrium altissimum</i>	IABF	Sis alt	Tumblemustard
<i>Smilacina racemosa</i> (<i>Maianthemum racemosum</i>)	NPF	Smi rac	Feather solomon's seal
<i>Smilacina stellata</i> (<i>Maianthemum stellatum</i>)	NPF	Smi ste	Starry false solomon's seal
<i>Spiraea xpyramidata</i> (<i>Spiraea tomentulosa</i>)	NS	Spi xpyr	Pyramid spirea
<i>Spiraea betulifolia</i>	NS	Spi bet	White spirea
<i>Stipa occidentalis</i> (<i>Achnatherum occidentale</i>)	NPGc	Sti occ	Western needlegrass
<i>Streptopus amplexifolius</i>	NPF	Str amp	Clasping-leaved twisted-stalk
<i>Symphoricarpos albus</i>	NS	Sym alb	Common snowberry
<i>Symphoricarpos oreophilus</i>	NS	Sym ore	Mountain snowberry
<i>Symphyotrichum laeve</i> (<i>Aster laevis</i>)	NPF	Sym lae	Smooth aster
<i>Tanacetum vulgare</i>	IPF	Tan vul	Common tansy*
<i>Taraxacum officinale</i>	IPF	Tar off	Common dandelion
<i>Thalictrum occidentale</i>	NPF	Tha occ	Western meadowrue

<i>Thuja plicata</i>	NT	Thu pli	Western redcedar
<i>Tiarella trifoliata</i>	NPF	Tia tri	Trefoil foamflower
<i>Tragopogon dubius</i>	IABF	Tra dub	Common salsify
<i>Trifolium arvense</i>	IABF	Tri arv	Hare's foot
<i>Trifolium aureum</i> (<i>Trifolium agrarium</i>)	IABF	Tri aur	Yellow clover
<i>Trifolium pratense</i>	IPF	Tri pra	Red clover
<i>Trifolium repens</i>	IPF	Tri rep	White Dutch clover
<i>Trillium ovatum</i>	NPF	Tri ova	White wake-robin
<i>Trisetum canescens</i> (<i>Trisetum cernuum</i>)	NPGc	Tri can	Tall trisetum
<i>Tsuga heterophylla</i>	NT	Tsu het	Western hemlock
<i>Vaccinium membranaceum</i>	NS	Vac mem	Thin-leaf huckleberry
<i>Vaccinium scoparium</i>	NS	Vac sco	Grouse whortleberry
<i>Verbascum thapsus</i>	IABF	Ver tha	Flannel mullein
<i>Veronica arvensis</i>	IABF	Ver arv	Common speedwell
<i>Veronica officinalis</i>	IPF	Ver off	Common speedwell
<i>Vicia americana</i>	NPF	Vic ame	American vetch
<i>Vicia villosa</i>	IABF	Vic vil	Hairy vetch
<i>Viola adunca</i>	NPF	Vio adu	Early blue violet
<i>Viola glabella</i>	NPF	Vio gla	Stream violet
<i>Viola orbiculata</i>	NPF	Vio orb	Round-leaved violet
<i>Viola tricolor</i>	IABF	Vio tri	Johnny jumpup
<i>Zigadenus venenosus</i> (<i>Toxicoscordion venenosum</i>)	NPF	Zig ven	Meadow death-camas

*An asterisk indicates a Washington State or Pend O'Reille County listed noxious weed species.

Scientific nomenclature follows Lesica (2012). The more recent, most commonly used synonyms, partial synonyms/combinations, and misapplied names are given in parentheses. These, as well as common names, are taken from a variety of sources including:

Cronquist, A., A.H. Holmgren, N. H. Holmgren, J.L. Reveal and P.K. Holmgren. 1972-2012.
Intermountain Flora. 6 volumes. The New York Botanical Garden, New York City.

Flora of North America Editorial Committee, eds. 1993+.
Flora of North America North of Mexico. 16+ volumes. Oxford University Press, New York and Oxford.

Gleason, H.A. and A. Cronquist. 1991.
Manual of Vascular Plants of Northeastern United States and Adjacent Canada. Second edition. The New York Botanical Garden, New York City. 910 p.

Great Plains Flora Association. 1986.
Flora of the Great Plains. University Press of Kansas, Lawrence. 1392 p.

Hitchcock, C.L., A. Cronquist, M. Ownbey and J.W. Thompson. 1955-1969.
Vascular Plants of the Pacific Northwest. 5 volumes. University of Washington Press, Seattle.

Kartesz, J.T. 1994.
A Synonymized Checklist of the Vascular Flora of the United States, Canada and Greenland. Second edition. 2 volumes. Timber Press. Portland, Oregon.

Lesica, P. 2012.
Manual of Montana Vascular Plants. Botanical Research Institute of Texas Press. Fort Worth, Texas. 771 p.

Lichvar, R. 2012.
The National Wetland Plant List. ERDC/CRREL TN-12-11. Hanover, NH: U.S. Army Engineer Research and Development Center, Cold Regions Research and Engineering Laboratory. http://wetland_plants.usace.army.mil/

Lichvar, R.W., D.L. Banks, W.N. Kirchner, and N.C. Melvin. 2016.
The National Wetland Plant List: 2016 wetland ratings. Phytoneuron 2016-30: 1-17. http://wetland_plants.usace.army.mil/