



Oil Spill Contingency Plan

January 2023

I. Contact Information

Name	Role/Position	Contact Information
Eric Temple	President/Owner	425-835-2582, Office
Nathan Bruce	Chief Operating Officer	661-817-3977, cell
Kevin Tyler	Clark County RR Coordinator	360-907-6552, cell

II. Rail Operational Information

- Description of rail routes in Washington where oil is transported as cargo: *Rye Junction to Rye Yard. MP .01 to MP 4.0 RYE.*
- Type of Oil Transported: *Mineral Oil (Non-Hazardous Commodity)*
- List of facilities you receive or deliver oil to/from. *Bonneville Power Admin. Complex. MP 2.5.*
- Description of fueling locations for rail operations, if any. *Rye Yard Truck. MP 3.6.*
- Locations where loaded rail cars are temporarily stored, if any. *Rye Yard. MP 36.*

III. Facility Insurance Information

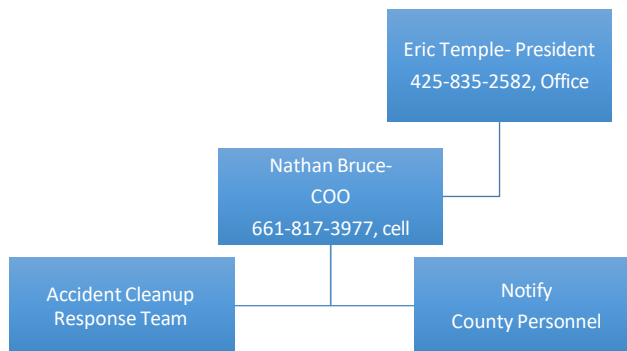
The company maintains full liability insurance, held by Marsh USA. The policy offers liability insurance of \$5mm per occurrence, with a \$10mm policy aggregate. Copies of the insurance certificate will be made available to the Department of Ecology as requested.

Plan Annual Update Process

Portland Vancouver Junction Railroad will commit to reviewing the plan for accuracy at least once annually. *Portland Vancouver Junction Railroad* will either submit plan changes to Ecology or inform Ecology in writing that the plan has been reviewed but no changes have been made.

IV. Field Document

- All changes will be communicated by either A) Eric Temple or B) Nathan Bruce. For contact information, see above table.



IN THE EVENT OF A SPILL:

- **STOP THE FLOW**
- **CONTAIN THE SPILL**
- **ENSURE THE SAFETY OF ANYONE IN THE AREA**
- **ASSESS THE SPILL AND DOCUMENT INFORMATION TO BE REPORTED**
- **INITIATE THE EMERGENCY RESPONSE NOTIFICATION SYSTEM VIA THE FLOW CHART ABOVE**

APPENDIX A Field Document

Initial Response Actions and Notifications - Central Reporting Office

Emergency Coordinators		
Position	Location	Name and Contact Information
Emergency Coordinator	Eric Temple	425-835-2582
Emergency Coordinator	Nathan Bruce	661-817-3977

The first Company employee on scene will function as the Person-in-Charge until relieved by a person who has been assigned to assume the role of the Incident Commander. The Person-in-Charge shall initiate the initial response actions as follows in this Field Guide.

Initial Response Actions

IN THE EVENT OF A SPILL:

- STOP THE FLOW
- CONTAIN THE SPILL
- ENSURE THE SAFETY OF ANYONE IN THE AREA
- ASSESS THE SPILL AND DOCUMENT INFORMATION TO BE REPORTED
- INITIATE THE EMERGENCY RESPONSE NOTIFICATION SYSTEM

Immediately upon discovery of a spill, responding personnel should identify the location of the spill, isolate the area, stop the flow if possible, ensure the safety of any people in the immediate area, and initiate notifications to a central reporting office or a Qualified Individual (QI) as directed in this Field Guide.

Step 1: Assess the Incident/Spill

Information about the spill should be as clear, concise, accurate and timely as possible. The minimum information reported, for initial report and update reports, should be:

1. Name and telephone number of the caller
2. Date and time of the call
3. Specific location of the spill
4. Type of oil or product(s) spilled
5. Estimated quantity
6. Actions taken to-date
7. Assistance required
8. Injuries
9. Weather conditions
10. Reason for discharge (if known)

Use the Spill Information Report Form located in this Field Guide.

Step 2: Notify Central Reporting Office/Emergency Coordinator/Qualified Individual (QI)

The initial **Person-in-Charge** shall notify Central Reporting Office or a Qualified Individual (QI) who is responsible for initiating response actions and calling out resources. The person taking the call, the QI, or a designee shall initiate notifications of response contractors, government agencies, spill management personnel, and other notifications identified in this plan. The QI shall ensure there is an IC appointed to manage the incident. The QI may also function as the IC. Once the QI has been notified, steps 2 through 4 below shall be initiated as soon as possible. All notifications shall be documented on a Spill Notification Report Form and the Field Guide.

Step 2: Notify Primary Response Contractor

Primary Response Contractor Notifications	
Response Contractor Name	Contact Number (24 hours)
Clean Harbors, 24 Hour Emergency Response	<u>1.800.645.8265</u>

Step 3: Notify National Response Center (NRC) and Washington Emergency Management Division (WEMD)

All spills of oil or hazardous substance into navigable waters and/or groundwater as defined by the Clean Water Act (CWA) and all spills of a reportable quantity of hazardous substances (40 CFR Part 302) must be immediately reported by the spiller to the National Response Center (NRC) and Washington Emergency Management Division (WEMD). The NRC will contact appropriate local US Coast Guard (USCG) or Environmental Protection Agency (EPA) offices. WEMD will notify appropriate Department of Ecology Responders. Both NRC and WEMD will be notified.

REPORT THE FOLLOWING SPILLS TO NRC AND WEMD WITHIN 1-HOUR OF DISCOVERY:

- ALL SPILLS OF ANY SIZE TO WATERS OF THE STATE
- SPILLS THAT THREATEN TO ENTER WATERS OF THE STATE
- SPILLS OF UNKNOWN QUANTITY

National Response Center (NRC)
1-800-424-8802

Washington Emergency Management Division (WEMD)
1-800-258-5990

Step 4: Make all other notifications directed under this plan

The following Company and Spill Management Team personnel shall be notified.

Company Management and Spill Management Team Members	
Name	Contact Number
Eric Temple	425-835-2582
Nathan Bruce	661-817-3977

The following government agencies shall be notified.

Notifications to Government Agencies	
Government Agency Name	Contact Number
Clark County, WA	Kevin Tyler: Railroad Coordinator, Public Works (360) 907-6552
Department of Ecology, Washington State	Southwest Regional Office - 1-360-407-6300

APPENDIX B

Spill Assessment, Information, and Notification Reporting Forms

Spill Assessment Checklist		
Completed	Task	Initials
	Ensure health and safety of responders and the public as necessary. Conduct site safety health assessment and safety briefing prior to operations in the field.	
	Determine Source and Location.	
	Determine if the source is controlled or if it is an ongoing release. If continuous, determine release rate.	
	Estimate volume and size of spill (dimensions of sheen or pooled oil) and type of product.	
	Determine receiving environment – land, water, or land with potential for waterway impact.	
	Implement site safety assessment and air monitoring procedures.	
	Consider immediate impacts to workers and public, action evacuation, and continuous air monitoring, as needed.	
	Assess direction and rate of movement of spill, and implement spill tracking procedures and equipment – see section 4.3	
	Evaluate environmental conditions (topography, wind, currents, tides, flow rate, etc.) for influence on spill trajectory and response actions.	
	If spill to land, evaluate potential for groundwater impact.	
	Make all required notifications.	
	Ensure incident commander is assigned and ICS is implemented. If large spill ensure unified command is initiated.	

Oil Spill Information and Notification Report Form

Used to document initial spill information and notifications conducted as part of the response.

Initial Information and Notification to Company Reporting Office or QI by Person-In-Charge. Person-in-Charge is the person initially observing and reporting the spill. This form shall be maintained as part of on-going assessments.

Contact or Information Type	Information
Name and telephone number of person reporting the spill	
Date and time of the call	
Name of person contacted (Specify if Management or QI)	
Specific location of the Spill	
Type of oil or product(s) Spilled	
Estimated Quantity	
Actions Taken To-Date	
Assistance Required	
Injuries	
Weather Conditions	
Reason for discharge (if known)	

Documentation of all Notifications

Notification	Contact Information
Nat'l Response Center (NRC) at 800-424-8802	Contact Name: Date/Time of Contact: Report # given by NRC
WA Emergency Management at 800-258-5990	Contact Name: Date/Time of Contact: Report # given by WEMD
	Contact Name: Date/Time of Contact:
	Contact Name: Date/Time of Contact:
	Contact Name: Date/Time of Contact:
	Contact Name: Date/Time of Contact:
	Contact Name: Date/Time of Contact:
	Contact Name: Date/Time of Contact: