



Washington State
Department of Ecology
Spill Prevention, Preparedness, and Response Program
PO Box 47600, Olympia, WA 98504-7600
Office Phone: (360) 407-7455
Fax: (360) 407-7288 or toll free 1-800-664-9184

Spill Management Team (SMT) Application

INTRODUCTION

The information provided in this application will be used to verify and evaluate your Spill Management Team (SMT) application, and may be used to support oil spill contingency plan approvals submitted under Chapter 173-182 Washington Administrative Code (WAC) Oil Spill Contingency Plan Rule and Chapter 173-186 WAC Oil Spill Contingency Plan - Railroad Rule. SMT applications are subject to a 30 day public review and comment period prior to receiving approval from the state, in accordance with WAC 173-182-640. All information provided in the application is subject to public disclosure.

WAC 173-182-840

Ecology shall inspect contracts, letters of intent (LOIs), employee training records, and conduct a test of the SMT call-out procedures. A combination of training and experience in drills and spills may be used to describe SMT personnel capabilities within response roles.

WAC 173-182-850

Significant changes in SMT applications require notification. The SMT is responsible to provide written notification to Ecology and all plan holders to whom they are obligated, within twenty-four hours, of any significant change in the information reported in the approved application.

WAC 173-182-900

Ecology may verify compliance with this chapter by examining training records, accuracy of call-out and notification lists, spill management team lists, incident command system (ICS) forms, post-spill reviews and records on lessons learned.

Oil spill responses present opportunities to gather information on the effectiveness of your personnel resources. In the event SMT personnel are deployed for spill response operations, Ecology may require documentation of performance and lessons learned from the SMT.

Submit your completed and signed application via email to contractorapp@ecy.wa.gov or via mail to:

**Washington Department of Ecology
Spill Preparedness Section – Spill Management Team Application Review
PO Box 47600
Olympia, WA 98504-7600**

Company Name:

UBI Number:

Point of Contact:

Mailing Address:

City:

State:

Zip:

Physical Address:

City:

State:

Zip:

Primary Phone Number:

Primary Fax Number:

Email:

B – SIGNATURE

The information in this application is accurate and _____ is committed to:

1. Have a process to provide 24 hour per day contact for spill management. WAC 173-182-830
2. Begin mobilization efforts immediately upon notification but no later than two hours from notification of a spill. WAC 173-182-830
3. Ensure the incident commander is able to arrive in the state within six hours after notification of a spill, if the SMT is contracted to fill the role. WAC 173-182-830
4. Assist plan holders in meeting the requirements for plans and drills in Washington. WAC 173-182-830
5. Implementation and use of the contingency plan(s) to which they are contracted during a spill and substantial threat of a spill, and the training of personnel to implement the plan. WAC 173-182-830
6. Work in unified command within the incident command system to ensure that all personnel and equipment resources necessary to the response will be called out to clean up the spill safely and to the maximum extent practicable. WAC 173-182-830
7. Provide written notification to ecology and all plan holders to whom they are obligated, within twenty-four hours, of any significant change in the information reported in the approved application. WAC 173-182-850

Printed Name

Title

Signature (electronic signature is acceptable)

Date

Fill out only the sections that apply to your company

C – PERSONNEL INFORMATION: WAC 173-182-840(1)

Include a list of response personnel and indicate whether they are full time, part-time, dedicated, or non-dedicated employees and their home base or office location. Dedicated means either full-time or part-time employee of the SMT. Non-dedicated means any personnel resource available under contract, LOI, or other approvable means. Non-dedicated relationships will be verified during the application review process.

D – ORGANIZATIONAL DIAGRAM: WAC 173-182-840(2)

Include an ICS Form 207 organizational diagram depicting a potential staffing plan for the roles the SMT may fill in support of a worst case spill. You may include this diagram as an attachment.

E – NOTIFICATION AND PERSONNEL RESOURCES: WAC 173-182-840(3)

E1. Describe your 24 hour response system and provide the phone number. Cite the name of a central reporting office or individual(s) responsible for implementing your call-out process.

E2. Describe estimated personnel response times for arrival in state, based on the standby or call back status of the person, their home base, and travel time. Describe the order of priority for call-out.

F - TRAINING INFORMATION: WAC 173-182-840(4)

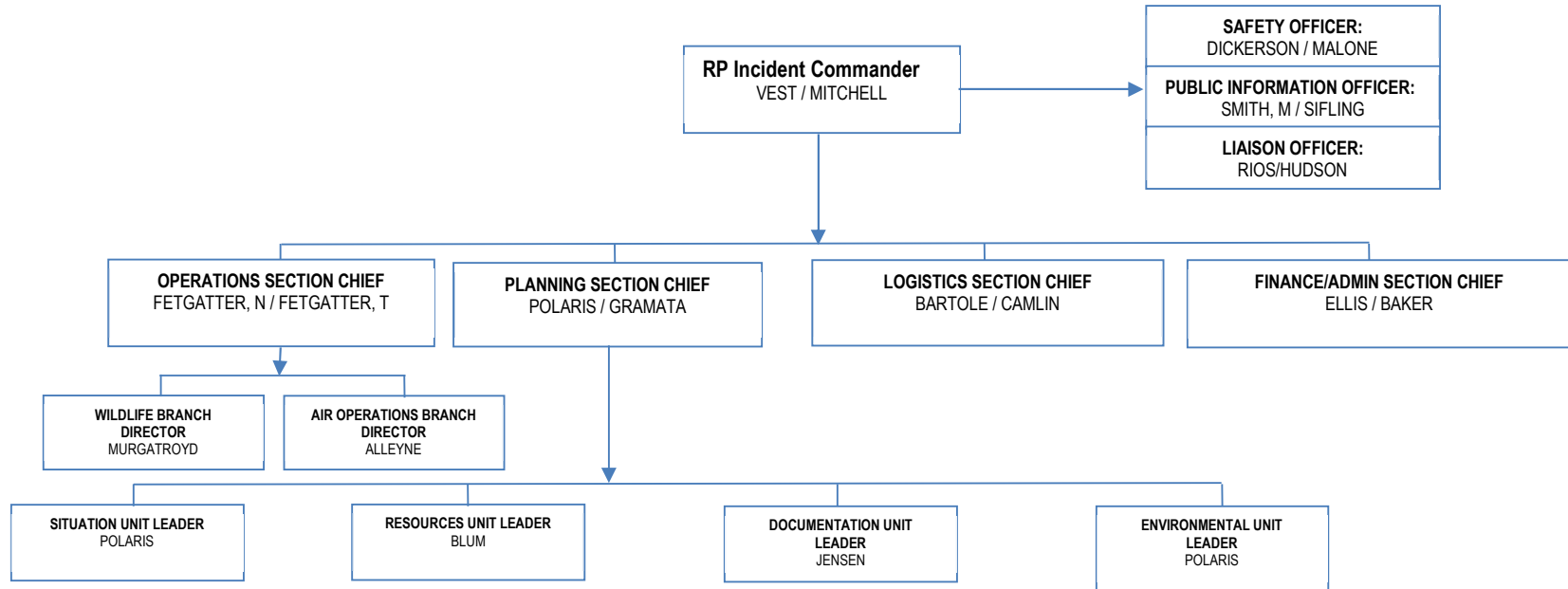
F1. Include a list of the type and frequency of training staff receive as applicable by ICS position. The training must be position specific for the roles that may be filled by the SMT. A combination of training and experience in drills and spills may be used to describe SMT personnel capability within response roles. The list may be organized by position or may be an inventory of staff training levels.

The following categories of training, at a minimum, should be described as applicable to the role:

1. ICS training
2. NWACP policies and response tools
3. Use and location of GRPs
4. Contents of the contingency plan(s)
5. Worker health and safety requirements including Washington state specific regulations

F2. Describe the responsibility for training based on employment status (full-time, part-time, or non-dedicated) and indicate whether the employer or employee is responsible for maintaining training. Describe how the employer verifies training compliance.

Name	Company Affiliation	Dedicated Resource (D) / Non-Dedicated Resource (NDR)	IC	LOFR	PIO	SOFR	PSC	OSC	LSC	FSC	ENVL	SITL	DOCL	RESL	AOBD	WLBD	COMPL	SCAT Coordinator	DIVS	Dispersant Opns SME	ISB Opns SME	ENV Tech Spec.
Alleyne, Wayne	Hudson Marine Management Services	D						X							X							
Baker, Grace	Hudson Marine Management Services	D								X												
Bartole, Patricia	Hudson Marine Management Services	D							X			X		X								
Baskin, Andrew	Hudson Marine Management Services	D		X	X																	
Blum, Amy	Hudson Marine Management Services	D											X	X								
Ellis, Michelle	Hudson Marine Management Services	D								X												
Gerland, Timothy	Hudson Marine Management Services	D			X		X	X	X			X	X	X								
Gramata, Jennifer	Hudson Marine Management Services	D				X	X	X														
Hudson, Cynthia	Hudson Marine Management Services	D		X	X					X												
Jensen, Sean	Hudson Marine Management Services	D											X									
Smith, Marc	Hudson Marine Management Services	D	X	X	X	X																
Stabile, Deborah	Hudson Marine Management Services	D															X					
Vest, Troy	Hudson Marine Management Services	D	X												X							
Camlin, Theo	TCamlin LLC	NDR	X				X	X	X			X		X					X	X	X	
Dickerson, David	Phoenix Pollution Control & Environmental Services	NDR				X																
Estes, Kim	Estes Group LLC	NDR	X	X	X																	
Fetgatter, Nelson	Phoenix Pollution Control & Environmental Services	NDR	X					X							X							
Fetgatter, Travis	Phoenix Pollution Control & Environmental Services	NDR						X														
Gollnick, Peter	No Affiliation	NDR																				
Lattanzi, Paul	The Paratus Group	NDR	X			X	X	X														
Malone, Drew	Phoenix Pollution Control & Environmental Services	NDR				X																
Mitchell, Vince	No Affiliation	NDR	X					X														
Murgatroyd	Wildlife Response Management	NDR														X						
Owens, Ed	Owens Coastal Consultants Ltd.	NDR									X							X				
POLARIS	Polaris Applied Sciences, Inc.	NDR					3				5	3						X				X
Rios, Jose	Rios Emergency Management Services	NDR	X	X			X				X					X		X				
Siffling, John	Broad Reach Maritime	NDR	X		X	X	X	X								X						
Smith, Jeremy	No Affiliation	NDR						X														
TOTALS			9	5	6	6	7	10	3	3	3	4	3	4	3	2	1	3	1	1	1	1



Name	Company Affiliation	Dedicated Resource (D) / Non-Dedicated Resource (NDR)	Homebase City	Homebase State	Home Airport	Travel Estimate (Best/Worst Case)
Alleyne, Wayne	Hudson Marine Management Services	D	Mandeville	LA	MSY	Commercial Air Travel - 45 mins 1.5 hrs from home base to MSY. Wait time = 1 to 3 hrs. MSY to SEA = 5.5 to 14 hrs. MSY to PDX = 6.5 to 19.5 hrs. 1.25 to 2 hrs to embark ground transportation and arrive at ICP. Helicopter charter possible to expedite travel from local airport to ICP. Arrival = 9.5 to 27 hrs
Baker, Grace	Hudson Marine Management Services	D	West Orange	NJ	EWR	Commercial Air Travel - 45 mins 1.5 hrs from home base to EWR. Wait time = 1 to 3 hrs. EWR to SEA = 6 to 17 hrs. EWR to PDX = 6.5 to 23 hrs. 1.25 to 2 hrs to embark ground transportation and arrive at ICP. Helicopter charter possible to expedite travel from local airport to ICP. Arrival = 10.5 to 29.5 hrs
Bartole, Patricia	Hudson Marine Management Services	D	Hamilton	NJ	PHL	Commercial Air Travel - 1.5 -2 hrs from home base to PHL. Wait time = 1 to 6 hrs. PHL to SEA = 6-14 hrs. PHL to PDX = 6-17 hrs. 1.25 to 5 hrs to embark ground transportation and arrive at ICP. Helicopter charter possible to expedite travel from local airport to ICP. Arrival = 10 to 30 hrs
Baskin, Andrew	Hudson Marine Management Services	D	Gaitherburg	VA	BWI/IAD	Commercial Air Travel - 1.5 -2 hrs from home base to BWI and IAD. Wait time = 1 to 6 hrs. BWI to SEA = 6 to 16 hrs. BWI to PDX = 6-19 hrs. 1.25 to 2 hrs to embark ground transportation and arrive at ICP. Helicopter charter possible to expedite travel from local airport to ICP. Arrival = 10.5 to 29 hrs
Blum, Amy	Hudson Marine Management Services	D	Cherry Hill	NJ	PHL	Commercial Air Travel - 1.5 -2 hrs from home base to PHL. Wait time = 1 to 6 hrs. PHL to SEA = 6-14 hrs. PHL to PDX = 6-17 hrs. 1.25 to 5 hrs to embark ground transportation and arrive at ICP. Helicopter charter possible to expedite travel from local airport to ICP. Arrival = 10 to 30 hrs
Ellis, Michelle	Hudson Marine Management Services	D	Millville	NJ	PHL	Commercial Air Travel - 1.5 -2 hrs from home base to PHL. Wait time = 1 to 6 hrs. PHL to SEA = 6-14 hrs. PHL to PDX = 6-17 hrs. 1.25 to 5 hrs to embark ground transportation and arrive at ICP. Helicopter charter possible to expedite travel from local airport to ICP. Arrival = 10 to 30 hrs
Gerland, Timothy	Hudson Marine Management Services	D	Woodbury Heights	NJ	PHL	Commercial Air Travel - 1.5 -2 hrs from home base to PHL. Wait time = 1 to 6 hrs. PHL to SEA = 6-14 hrs. PHL to PDX = 6-17 hrs. 1.25 to 5 hrs to embark ground transportation and arrive at ICP. Helicopter charter possible to expedite travel from local airport to ICP. Arrival = 10 to 30 hrs
Gramata, Jennifer	Hudson Marine Management Services	D	Somerdale	NJ	PHL	Commercial Air Travel - 1.5 -2 hrs from home base to PHL. Wait time = 1 to 6 hrs. PHL to SEA = 6-14 hrs. PHL to PDX = 6-17 hrs. 1.25 to 5 hrs to embark ground transportation and arrive at ICP. Helicopter charter possible to expedite travel from local airport to ICP. Arrival = 10 to 30 hrs
Hudson, Cynthia	Hudson Marine Management Services	D	Blue Bell	PA	PHL	Commercial Air Travel - 1.5 -2 hrs from home base to PHL. Wait time = 1 to 6 hrs. PHL to SEA = 6-14 hrs. PHL to PDX = 6-17 hrs. 1.25 to 5 hrs to embark ground transportation and arrive at ICP. Helicopter charter possible to expedite travel from local airport to ICP. Arrival = 10 to 30 hrs
Jensen, Sean	Hudson Marine Management Services	D	Cherry Hill	NJ	PHL	Commercial Air Travel - 1.5 -2 hrs from home base to PHL. Wait time = 1 to 6 hrs. PHL to SEA = 6-14 hrs. PHL to PDX = 6-17 hrs. 1.25 to 5 hrs to embark ground transportation and arrive at ICP. Helicopter charter possible to expedite travel from local airport to ICP. Arrival = 10 to 30 hrs
Smith, Marc	Hudson Marine Management Services	D	Philadelphia	PA	PHL	Commercial Air Travel - 1.5 -2 hrs from home base to PHL. Wait time = 1 to 6 hrs. PHL to SEA = 6-14 hrs. PHL to PDX = 6-17 hrs. 1.25 to 5 hrs to embark ground transportation and arrive at ICP. Helicopter charter possible to expedite travel from local airport to ICP. Arrival = 10 to 30 hrs
Stabile, Deborah	Hudson Marine Management Services	D	Morrisville	NJ	PHL	Commercial Air Travel - 1.5 -2 hrs from home base to PHL. Wait time = 1 to 6 hrs. PHL to SEA = 6-14 hrs. PHL to PDX = 6-17 hrs. 1.25 to 5 hrs to embark ground transportation and arrive at ICP. Helicopter charter possible to expedite travel from local airport to ICP. Arrival = 10 to 30 hrs
Vest, Troy	Hudson Marine Management Services	D	Murphysboro	IL	STL	Commercial Air Travel - 2.5-4 hrs from home base to STL. Wait time = 1 to 6 hrs. STL to SEA = 5-14 hrs. STL to PDX = 5-14 hrs. 1.25 to 2 hrs to embark ground transportation and arrive at ICP. Helicopter charter possible to expedite travel from local airport to ICP. Arrival = 10 to 26 hrs
Camlin, Theo	TCamlin LLC	NDR	Pearland	TX	HOU/IAH	Commercial Air Travel - 45 mins to 2 hrs from home base to IAH/HOU. Wait time = 1 to 3 hrs. IAH/HOU to SEA = 5.5 to 15 hrs. IAH/HOU to PDX = 4.5 to 17 hrs. 1.25 to 2 hrs to embark ground transportation and arrive at ICP. Helicopter charter possible to expedite travel from local airport to ICP. Arrival = 11 to 25 hrs
Dickerson, David	Phoenix Pollution Control & Environmental Services	NDR	Baytown	TX	IAH/HOU	Commercial Air Travel - 45 mins to 2 hrs from home base to IAH/HOU. Wait time = 1 to 3 hrs. IAH/HOU to SEA = 5.5 to 15 hrs. IAH/HOU to PDX = 4.5 to 17 hrs. 1.25 to 2 hrs to embark ground transportation and arrive at ICP. Helicopter charter possible to expedite travel from local airport to ICP. Arrival = 11 to 25 hrs
Estes, Kim	Estes Group LLC	NDR	Cypress	CA	LGB/LAX	Commercial Air Travel - 45 mins 1.5 hrs from home base to LAX. Wait time = 1 to 3 hrs. LAX to SEA = 3 to 19 hrs. LAX to PDX = 2.5 to 17 hrs. 1.25 to 2 hrs to embark ground transportation and arrive at ICP. Helicopter charter possible to expedite travel from local airport to ICP. Arrival = 6 to 25.5 hrs
Fetgatter, Nelson	Phoenix Pollution Control & Environmental Services	NDR	Baytown	TX	IAH/HOU	Commercial Air Travel - 45 mins to 2 hrs from home base to IAH/HOU. Wait time = 1 to 3 hrs. IAH/HOU to SEA = 5.5 to 15 hrs. IAH/HOU to PDX = 4.5 to 17 hrs. 1.25 to 2 hrs to embark ground transportation and arrive at ICP. Helicopter charter possible to expedite travel from local airport to ICP. Arrival = 11 to 25 hrs
Fetgatter, Travis	Phoenix Pollution Control & Environmental Services	NDR	Baytown	TX	IAH/HOU	Commercial Air Travel - 45 mins to 2 hrs from home base to IAH/HOU. Wait time = 1 to 3 hrs. IAH/HOU to SEA = 5.5 to 15 hrs. IAH/HOU to PDX = 4.5 to 17 hrs. 1.25 to 2 hrs to embark ground transportation and arrive at ICP. Helicopter charter possible to expedite travel from local airport to ICP. Arrival = 11 to 25 hrs
Gollnick, Peter	No Affiliation	NDR	Elkins Park	PA	PHL	Commercial Air Travel - 1.5 -2 hrs from home base to PHL. Wait time = 1 to 6 hrs. PHL to SEA = 6-14 hrs. PHL to PDX = 6-17 hrs. 1.25 to 5 hrs to embark ground transportation and arrive at ICP. Helicopter charter possible to expedite travel from local airport to ICP. Arrival = 10 to 30 hrs
Lattanzi, Paul	The Paratus Group	NDR	Yarmouth	ME	PWM	Commercial Air Travel - 45 mins to 2 hrs from home base to PWM. Wait time = 1 to 3 hrs. PWM to SEA = 8.5 to 16 hrs. PWM to PDX = 9 to 13 hrs. 1.25 to 2 hrs to embark ground transportation and arrive at ICP. Helicopter charter possible to expedite travel from local airport to ICP. Arrival = 11 to 22 hrs
Malone, Drew	Phoenix Pollution Control & Environmental Services	NDR	Baytown	TX	IAH/HOU	Commercial Air Travel - 45 mins to 2 hrs from home base to IAH/HOU. Wait time = 1 to 3 hrs. IAH/HOU to SEA = 5.5 to 15 hrs. IAH/HOU to PDX = 4.5 to 17 hrs. 1.25 to 2 hrs to embark ground transportation and arrive at ICP. Helicopter charter possible to expedite travel from local airport to ICP. Arrival = 11 to 25 hrs
Mitchell, Vince	No Affiliation	NDR	Marysville	WA	SEA	Travel via vehicle to area of spill - anticipate time to initial command post 4-12 hrs
Murgatroyd	Wildlife Response Management	NDR	Seabrook	TX	HOU/IAH	Commercial Air Travel - 45 mins to 2 hrs from home base to IAH/HOU. Wait time = 1 to 3 hrs. IAH/HOU to SEA = 5.5 to 15 hrs. IAH/HOU to PDX = 4.5 to 17 hrs. 1.25 to 2 hrs to embark ground transportation and arrive at ICP. Helicopter charter possible to expedite travel from local airport to ICP. Arrival = 11 to 25 hrs
Owens, Ed	Owens Coastal Consultants Ltd.	NDR	Bainbridge Island	WA	SEA	Travel via vehicle to area of spill - anticipate time to initial command post 4-12 hrs
POLARIS	Polaris Applied Sciences, Inc.	NDR	Kirkland	WA	SEA	Travel via vehicle to area of spill - anticipate time to initial command post 4-12 hrs
Rios, Jose	Rios Emergency Management Services	NDR	Bainbridge Island	WA	SEA	Travel via vehicle to area of spill - anticipate time to initial command post 4-12 hrs
Sifling, John	Broad Reach Maritime	NDR	Pasadena	CA	LAX	Commercial Air Travel - 45 mins 1.5 hrs from home base to LAX. Wait time = 1 to 3 hrs. LAX to SEA = 3 to 19 hrs. LAX to PDX = 2.5 to 17 hrs. 1.25 to 2 hrs to embark ground transportation and arrive at ICP. Helicopter charter possible to expedite travel from local airport to ICP. Arrival = 6 to 25.5 hrs
Smith, Jeremy	No Affiliation	NDR	Marrero	LA	MSY	Commercial Air Travel - 45 mins 1.5 hrs from home base to MSY. Wait time = 1 to 3 hrs. MSY to SEA = 5.5 to 14 hrs. MSY to PDX = 6.5 to 19.5 hrs. 1.25 to 2 hrs to embark ground transportation and arrive at ICP. Helicopter charter possible to expedite travel from local airport to ICP. Arrival = 9.5 to 27 hrs

HMMS IMT/SMT Training Matrix	ICS						Safety		Contingency & Response Plans		
ICS Position	100/200	300	400	700/800	Refresher	Role Specific Training	HAZWOPPER	WA Health & Safety	NWACP	WA GRP	VRP
Incident Commander (QI/IC)	1	2	2	1	4	3, 4	1*	1	1, 4	1, 4	1, 4
Public Information Officer (PIO)	1	2	2	1	4	3, 4	1^	1	1, 4	1, 4	1, 4
Liaison Officer (LOFR)	1	2	2	1	4	3, 4	1^	1	1, 4	1, 4	1, 4
Safety Officer (SOFR)	1	2	2	1	4	3, 4	1*	1	1, 4	1, 4	1, 4
Operations Section Chief (OSC)	1	2	2	1	4	3, 4	1*	1	1, 4	1, 4	1, 4
Planning Section Chief (PSC)	1	2	2	1	4	3, 4	1^	1	1, 4	1, 4	1, 4
Logistics Section Chief (LSC)	1	2	2	1	4	3, 4	1^	1	1, 4	1, 4	1, 4
Finance Section Chief (FSC)	1	2	2	1	4	3, 4	1^	1	1, 4	1, 4	1, 4
Wildlife Branch Director	1	2	2	1	4	3, 4	1*	1	1, 4	1, 4	1, 4
Air Operations Branch Director	1	2	2	1	4	3, 4	1*	1	1, 4	1, 4	1, 4
Situation unit Leader (SITL)	1	2	2	1	4	3, 4	1^	1	1, 4	1, 4	1, 4
Resource Unit Leader (RESL)	1	2	2	1	4	3, 4	1^	1	1, 4	1, 4	1, 4
Documentation Unit Leader (DOCL)	1	2	2	1	4	3, 4	1^	1	1, 4	1, 4	1, 4
Environmental Unit Leader (ENVL)	1	2	2	1	4	3, 4	1^	1	1, 4	1, 4	1, 4

Frequency key

- 1 prior to response activities, (1* 24 hr/8hr refresher / 1^ Awareness Training)
- 2 Completed when course available,
- 3 When new to role or training needed,
- 4 obtained through training, exercise, or response.