

Clean Rivers WA PRC

Attachment C-3 Revised December 18, 2020

Response Personnel

Name	Position Title	Home Base / Office	Employment Status	ICS/Spill Management Team Role and/or Tactical Role
Curtis Cannizzaro	General Manager	Portland, OR	<input checked="" type="checkbox"/> Full time <input type="checkbox"/> Part time	DOSC, Recovery and Protection Branch Director, DRESL
Carl Boelter	Operations Manager	Portland, OR	<input checked="" type="checkbox"/> Full time <input type="checkbox"/> Part time	D OSC, DSAM, Recovery and Protection Branch Director
Chris Wilson	Equipment Maintenance Supervisor	Portland, OR	<input checked="" type="checkbox"/> Full time <input type="checkbox"/> Part time	DOSC, DSAM, Recovery and Protection Branch Director
Mason Sullivan	Administrative Coordinator	Portland, OR	<input checked="" type="checkbox"/> Full time <input type="checkbox"/> Part time	DRESL
Bekah Canfield	Executive Assistant	Portland, OR	<input checked="" type="checkbox"/> Full time <input type="checkbox"/> Part time	DPSC, DRESL
Jerry Holmes	Response Manager	Portland, OR	<input type="checkbox"/> Full time <input checked="" type="checkbox"/> Part time	DOSC, DSAM, Recovery and Protection Branch Director
Tim King	Response Manager	Portland, OR	<input type="checkbox"/> Full time <input checked="" type="checkbox"/> Part time	DOSC, DSAM, Recovery and Protection Branch Director
US Ecology	Response Contractors – Up to 48 people available within 12 hours	Portland/Seattle/California	<input type="checkbox"/> Full time <input checked="" type="checkbox"/> Part time	SOFR, DOSC, SAM, Recovery and Protection Branch Director, Air Ops Section Chief, LSC, PSC

Clean Rivers WA PRC

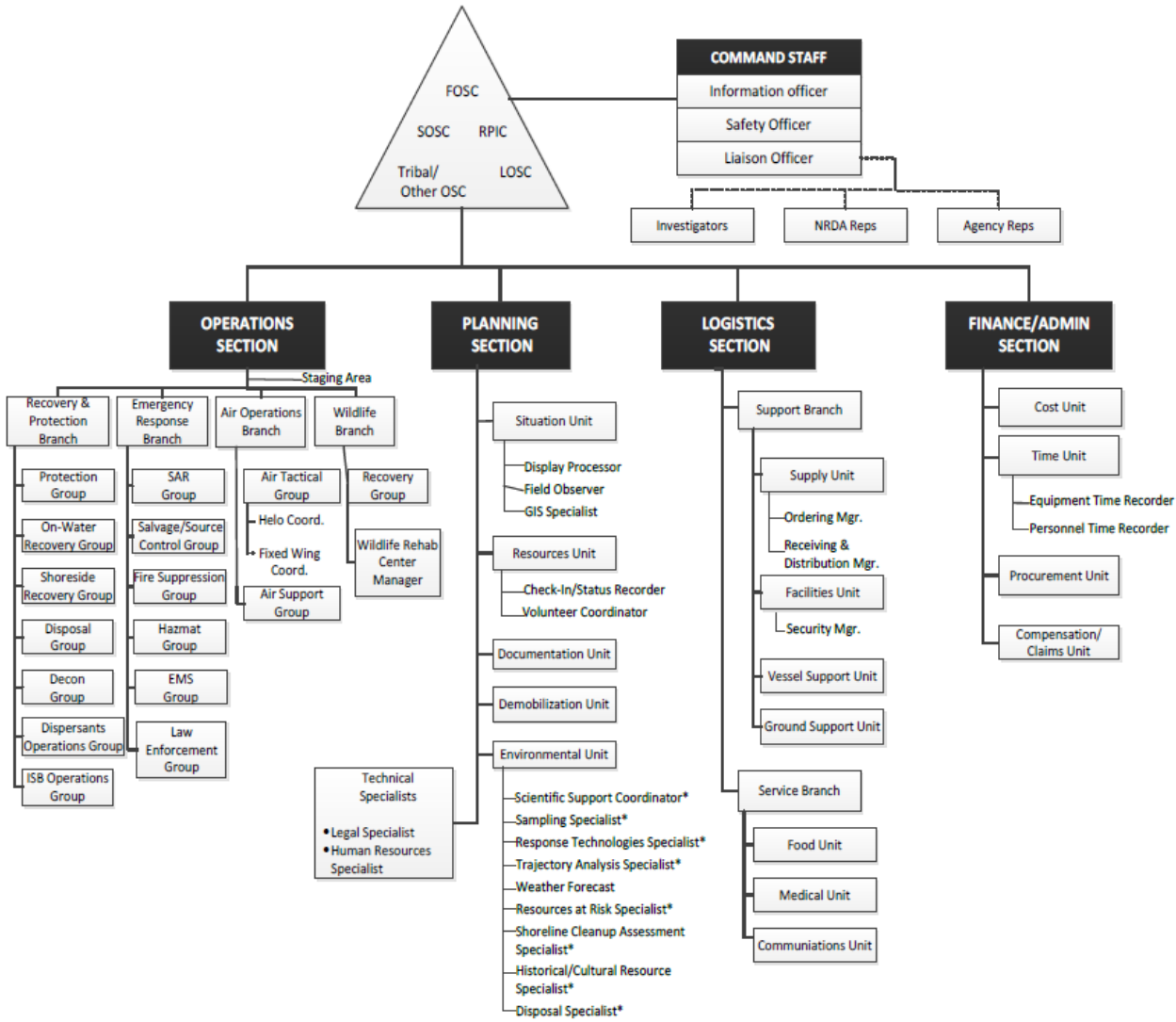
Attachment E-1 Revised December 18, 2020

Spill Management Team Support

Clean Rivers is capable of providing ICS trained personnel to assist members and contracted partners in staffing limited positions in their own Spill Management Team (SMT) pursuant to the applicable position job descriptions as outlined in the Northwest Area Contingency Plan (NWACP). The following information summarizes the integration of Clean Rivers ICS personnel into Responsible Party Spill Management Teams. Clean Rivers SMT training covers a minimum of NIMS/ICS 100, 200, 300, 700, and 800 courses with additional training as required by position. All SMT personnel who may be required to operate in the field are trained to a minimum 24-Hour HAZWOPER.

The ICS organization develops around five major functions that are required on any incident whether it is large or small (see Figure 1). For some incidents, and in some applications, only a few of the organization's functional elements may be required. However, if there is a need to expand the organization, additional positions exist within the ICS framework to meet virtually any need. ICS establishes lines of supervisory authority and formal reporting relationships. There is complete unity of command as each position and person within the system has a designated supervisor. Direction and supervision always follow the established organizational lines.

Figure 1 – ICS Structure



* Possible Assignment of Technical Specialists

Clean Rivers ICS personnel will fill Spill Management Team (SMT) ICS positions as defined in the National Incident Management System and Northwest Area Contingency Plan. To facilitate implementation of ICS, Clean Rivers will use the current referenced Incident Management Handbook, as recommended in the NWACP. Clean Rivers personnel that may be available for ICS Command Staff positions and minimum training required are provided below in Table 1.

Table 1 – Clean Rivers ICS Personnel and Training

	Contingency Plan(s)	NWACP, GRPs	ICS/NIMS 100, 200, 700, 800	ICS 300	ICS 400	Safety Officer	Deputy Ops Section Chief	Staging Area Manager	Recovery & Protection Branch Director	Air Ops Branch Director	Logistics Section Chief	Deputy Planning Section Chief	Deputy Resource Unit Leader
Name	Plans & GRPS		NIMS/ICS (1 time + OJT)										
Curtis Cannizzaro	Annual	Annual	x	x	x		x		x				x
Carl Boelter	Annual	Annual	x	x	x		x	x	x				
Chris Wilson	Annual	Annual	x	x	x		x	x	x				
Mason Sullivan	Annual	Annual	x	x									x
Bekah Canfield	Annual	Annual	x	x	x							x	x
Jerry Holmes	Annual	Annual	x	x			x	x	x				
Tim King	Annual	Annual	x	x			x	x	x				

Records are maintained at the Clean Rivers Cooperative office located at 200 SW Market St STE 190, Portland OR 97201 and will be made available for Ecology review upon request.

Clean Rivers WA PRC

Attachment F-7 Revised December 16, 2020

Non-Floating Oils

Clean Rivers Cooperative maintains letters of intent for spill response equipment and personnel for response to potentially non-floating oils oil spill response. Clean Rivers Cooperative has chosen specific contractors and resources identified for the planning standard WAC 173-182-324 with the capability of being on scene within twelve hours of spill notification. Clean Rivers Cooperative and its contractors owns and has access to a significant amount of spill response equipment with capability for oils, including potentially non-floating oils, while they remain on the water's surface. Clean Rivers Cooperative has composed a summary of contractors and specialized equipment projected to be appropriate for response capability of potentially non floating oils oil spills. The summary includes spill response contractors, diving companies, underwater construction companies, tug and barge companies, and underwater sediment sampling companies.

See attached -Potentially non-floating oils contractors

LOIs are viewable upon request at the Clean Rivers office located at 200 SW Market #190, Portland OR 97201



Potentially non-floating oils contractors

Companies	BOOM/SORBENT BOOM	SKIMMERS	PUMPS	SONAR	SILT CURTAIN	SAMPLING Equipment	DREDGES/Barges	COMMENTS
Clean Rivers Cooperative.	X	X	X					Full line of spill equipment, vessels and large pumps.
Anchor Environmental Portland, OR.				X	X	X		Sediment sampling, marine scientist, sampling equipment, clamshell bucket. Vessels available under contractor. Sonar w/ IVMS available under contract.
Global Diving & Salvage Seattle, WA.	X	x	X	X	X	X		ROV, sonar . Large scale pumps, submersible pumps available. Global maintains a full inventory of absorbent and snare materials, and has access to filter fence material but not in stock. Ropes mop units available. Vessels available and divers available.

Notes:

Recovery: Vacuum Systems, Skimmers, Dredges, Airlift (use of air wands to lift submerged oil/oil mat and return it to the water column), Skimmers, Divers (Manual & Vacuum) IVMS - Integrated Video Mapping System is an on-line computer database that integrates video data with positioning data, allowing the operator to identify exactly where video data are being collected, thus easing recovery of oil, Robotic Systems - use of robotic equipment to move along bottom and recover oil.

Detection: Sonar, vessel mounted bottom scan sonar, Diver/Camera, ROV/Camera (remotely operated vehicles with associated cameras). Contractors listed above are being listed for the purpose of WAC 173-182-324 – Planning Standards for Group 5 Oils.

Clean Rivers WA PRC

Attachment F-8 – Revised December 18, 2020

Wildlife Response Services

Wildlife Response Services

The Clean Rivers/MFSA Mobile Wildlife Response & Rehabilitation Unit, Transport Unit and Rehabilitation Shelter are available for response to Clean Rivers Member Facilities, the MFSA, or select government agencies upon request in Oregon and Washington State.

When activated, Clean Rivers, MSRC, and Focus wildlife will jointly provide personnel for transport, set up and mobile facility infrastructure service in accordance with their mutual aid agreement. For the location of specific equipment, please refer to the WRRL.

Clean Rivers Cooperative also maintains agreements with IBR directly and Focus Wildlife through an addendum to the service contract in place with US Ecology to sufficiently meet requirements for Personnel and Resource Regulations. Mutual aid agreements and contracts are maintained at the Clean Rivers Cooperative office located at 200 SW Market St STE 190, Portland OR 97201 and will be made available for Ecology review upon request.

Clean Rivers Cooperative has a current contract with NRC to access resources through Focus Wildlife for the provision of equipment and personnel for impact assessment, reconnaissance, deterrence, capture, stabilization, and rehabilitation of wildlife (“Wildlife Response Services”) and are authorized to reference and rely upon the personnel, equipment and services outlined in NRC’s Primary Response Contractor (PRC) Application to meet contingency planning requirements for such capabilities (“Authorized Plan Holders”).

The combination of Clean Rivers, IBR and Focus Wildlife owned and dedicated equipment and trained personnel as outlined in Schedules 1 and 2 provide the main components of the mobile facility approach endorsed by Washington State Department of Ecology for meeting applicable planning requirements for wildlife services.

Clean Rivers WA PRC

Attachment F-9 – Revised December 18, 2020

Shoreline Cleanup

Clean Rivers maintains letters of intent for 100 shoreline cleanup workers and the supervisors and supplies necessary to support their work. Clean Rivers has chosen specific contractors and resources identified for the planning standard WAC 173-182-522 with the capability of being on-scene within 24 hours of spill notification. Clean Rivers owns a shoreline cleanup trailer stocked with the PPE and response supplies needed for 100 workers to recover oil. Clean Rivers and its contractors have access to a network of cleanup workers and supervisors. Additionally, they own and have access to a significant amount of shoreline cleanup equipment and supplies. Clean Rivers has composed the following summary of contractors and specialized equipment projected to be appropriate to meet the planning standard.

The contractors are:

Shoreline Cleanup Workers:

- Clean Harbors
- Jammies Environmental
- Cowlitz Clean Sweep
- West Coast Marine Cleaning
- Global Diving & Salvage
- NRC/US Ecology

Shoreline Cleanup Supervisors:

- NRC/US Ecology

Shoreline Equipment Trailers (all trailers are listed on the WRRL):

- Clean Rivers 100 Man Trailer
- NRC/US Ecology
- Global Diving & Salvage

Passive Recovery Equipment (include the staging locations and amounts):

- Global Diving & Salvage
- NRC/US Ecology

Equipment Locations are updated on the WRRL but include the following trailers and current locations:

- Clean Rivers, 100 man PPE Shoreline Trailer (WRRL 31771) Portland, OR
- Clean Rivers, Shoreline Cleanup Trailer (WRRL 29182) Portland, OR
- Clean Rivers, Shoreline Cleanup Trailer (WRRL 29188) Portland, OR
- Clean Rivers, Shoreline Cleanup Trailer (WRRL 29187) Clatskanie, OR

In addition to these contractors, Clean Rivers maintains a memorandum of understanding with the members of the Association of Petroleum Industry Co-Op Managers (APICOM) to coordinate and share oil response resources. This nation-wide network with shoreline cleanup personnel and equipment is capable of cascading resources to the Lower Columbia and Willamette Rivers, should they be needed for a response.

LOIs are viewable upon request at the Clean Rivers office located at 200 SW Market #190, Portland OR 97201.

Clean Rivers WA PRC

Attachment F-14 – Revised December 18, 2020

Additional Non-Dedicated Resources

Clean Rivers Cooperative has relationships with other regional organizations who are able to provide air monitoring services during a response. These organizations include CTEH and EPA. Clean Rivers Cooperative maintains a LOI with CTEH. In a response, Clean Rivers Cooperative will utilize these organizations for implementation of their internally developed plans which satisfy the regulations specified in WAC 173-182-535. These organizations will activate equipment listed within the WRRL to sufficiently maintain air monitoring requirements for an incident.

Quantity	Description	Cabinet
8	Pitchfork	
19	Garden Bow Rake	
11	Shovel, Flat	
27	Shovel, Round	
1	Generator	
3	Leaf Rake	
2	Sledge Hammer	
2	Push Brooms	
1	Chain Saw	
1	Blower	
2	Trimmers	
1	2' Step Ladder	
1	6' Step Ladder	
1 gal.	Simple Green	
5 gal.	Fury Degreaser	
16	5 Gallon Buckets	
20	Decon Brushes	
12	Supervisor Raingear 2XL	
229	Raingear 2XL	
100	Raingear 3XL	
100	Raingear 4XL	
180	Raingear XL	
100	Tyvek 2XL	
115	Tyvek 3XL	
100	Tyvek XL	
67	Over Boots XL (size 12)	
165	12" Outer Gloves XL	
1800	Latex Inner Gloves L	
432	Nitrate Inner Gloves XL	
108	5"x8" Legal Pad	
96	8.5"x11" Legal Pad	
108	Mechanical Pencils	
2500	8.5"x11" Copy Paper Sheets	
25	Safety Goggles	
170	Safety Glasses	
7	Caution Tape Rolls	
9	Danger Tape Rolls	
40	Duct Tape Rolls	
10	Water Cooler	
15	First Aid Box, 10 Man	
10	Visqueen 20x100 6mil	
3	Barrel Liners 33x60 6mil	

4800	Oily Waste Clear Plastic Bags 30x40 4mil	
2	Eyewash Station	
20	Poly Line 3/8x600	
14	1 Yard Totes	
16	Sorbent Rolls	
28	Sorbent Pads	
30	5" Sorbent Boom Bags	
300	Snare (Pom Pom) Units	
8	Drinking Water Cases	
2	LD Can Liner 40x46	
28	Bags of Rags	
7	50' Garden Hose	
11	Hose Nozzles	
14	27 Gallon Storage Containers	
1	.94" blue tape	
2	1.88" blue tape	
1	clear packing tape	
1	wd40	
1	box expo dry erase pens	
3	sets ear plugs	
2	.5" blue tape	
1	box paper clips	
1	set post it tabs	
12	ball point pens	
9	sharpies	
1	box assorted screws and bolts	
7	Medium raingear	
1	box moto mix fuel	
1 qt	chainsaw lube	
1	chaps	
1	wrench set	
3	clear flat bags 26x60	
10	bales absorbent sweeps	
10	oil snares	
28	socknet boom	
16	rolls sorbent pads	
4	clipboards	
96	write in the rain pads	

Quantity	Description	Location
1 Each	Super Skimmer Float/Drum#501-56	Inside
1 Each	Super Skimmer Hyd.P.P.#810-58	Inside
1 Each	Belt Skimmer Attachment#551-56	Inside
	4200 Skim Pak System#715-56	
	2"Diaphragm Pump #603-57	
	4200 Skim Pak#527-56	
	4-Piece Wand, 2 Sections 2" Hard Hose 20' Long, Fire Hose 1 1/2" x 50', Surge Suppressor	
	Rain Gear	Tote #1
	Rubber Gloves	Tote#2
2 Each	Life Jackets	Tote#3
10lb Bag	Rags	Tote#4
10lb Bag	Rags	Tote#5
1 Each	785cca Glass Matt Battery-Exide for winch to back door	Forward on shelf
6 Each	Boom Lights with Floats (take 2 D-cell batteries)	Inside
1 Each	Spare Tire, ST 225-75-D15	Inside
4 Coils	Manila Line, 1/2" x 600' per coil	Inside
4 Each	Anchors, 22lb with 15' chain	Inside
1 Each	First Aid Kit, Orion Life Boat MD	By Center Access Door
1 Each	Fire Extinguisher, 5lb ABC	By Center Access Door
1 Each	Garbage Can, 55 gallon	Inside
1 Each	Pike Pole, 12'	Inside
4 Each	Boom Pins	Forward Left On Shelf
2 Each	Oars, 6'	Inside Garbage Can
2 Each	Push Brooms	Inside Garbage Can
2 Each	Round Tip Shovels	Inside Garbage Can
2 Each	Square Tip Shovels	Inside Garbage Can
2 Each	Garden Rakes	Inside Garbage Can
2 Each	Pitch Forks	Inside Garbage Can
1 Each	Personal Decon Kit	Inside
6 Each	Galaxy 1 Yard Waste Container	Inside
2 Rolls	Visqueen, 20' x 100' 6ml.	Inside
2 Rolls	Drum Liners, 36" x 60" 6ml., 50 per roll	Inside
2 Rolls	Drum Liners, 33" x 50" 6ml., 50 per roll	Inside
10 Bales	Absorbent Boom, 8" x 10', 4 per bale	Inside
10 Bales	Absorbent Pads, 15" x 18", 100 per bale	Inside
10 Bales	Absorbent Sweep, 19" x 100'	Inside
	14' Skiff #010-58	On Top/2" x 20' Ratchet Straps
4 Each	Ratchet Straps, 1" x 20"	Inside
4 Each	Bind Straps	

Inventory Sheet

Quantity	Description	Location
1 Each	Storage Box	Inside Trailer
1000ft	Containment Boom, 6x6	Inside Trailer
2 Each	Tow Bridles	Inside Trailer
1 Each	Skiff (011-58), 14' x 10"	On Roof
1 Each	Honda Outboard (625-58), 15hp w/fuel line & fuel can	Inside Trailer
2 Each	Paddles, 6'	Inside Trailer
1 Each	Fire Extinguisher (For Vessel), 2.5lb	Inside Trailer
1 Each	Air Horn, 16 oz	Inside Trailer
4 Each	Life Jackets, 2 - XL, 2 - 2XL	Inside Trailer
1 Each	Type IV Flotation, throw seat cushion	Inside Trailer
2 Each	Pike Poles, 1 - 6', 1 - 8'	Inside Trailer
2 Each	Anchors (Dansforth), 22lb w/15' chain	Inside Trailer
2 Coils Each	Poly Line, 3/8" x 600' coils	Inside Trailer
1 Roll	Duct Tape, 100'	Inside Trailer (storage box)
1 Each	First Aid Kit, ORION Life Boat	Mounted Inside right-side of man-door
1 Each	Fire Extinguisher, 10lb ABC	Mounted Inside right-side of man-door
4 Sets	Rain Gear, 2 - XL, 2 - XXL	Storage box
2 Sets	Gloves, 1 - 12, 1 - 14	Storage box
6 Each	Safety Glasses	Storage box
1 box	Ear Plugs	Storage box
2 Each	Hard Hats	Storage box
10 Bales	Absorbent Boom, 8" x10', 4 per bale	Stored on Roof Top
6 Bales	Absorbent Pads, 15" x 18", 100 per bale	Inside Trailer
2 Bales	Absorbent Sweep, 19" x 100' per bale	Inside Trailer
2 Bales	Snare on a rope	Inside Trailer
1 Roll	Absorbent Blanket	Inside Trailer
200 Each	Clean-up Bags, 40 x 46 2ml	Inside Trailer
1 Rolls	Visqueen, 20' x 100' 6ml	Inside Trailer
2 Rolls x 50 Per Roll	Drum Liners, 36" x 60" 6ml	Inside Trailer
2 Rolls x 50 Per Roll	Drum Liners, 33" x 50" 6ml	Inside Trailer
1 Each	Lug Wrench, 4-way	Storage box

Quantity	Description	Location
0	DOCUMENT BOX WITH TRAILER REGISTRATION	TRAILER TONGUE
1	SLEDGEHAMMER	
2	AXES	
3 Total	FLOTO PUMP, #618-57, #619-57, #622-57	INSIDE BACK
0	CRUCIAL SYSTEM #724-56	INSIDE MIDDLE
1 Each	CRUCIAL HYDRAULIC POWER PACK # 805-58, Hydraulic 9GPM Yanmar Diesel Engine	INSIDE MIDDLE/1 RATCHET STRAP
1 Each	CRUCIAL DIAPHRAGM PUMP #641-57, Hydraulic 3" Discharge/25' Suction Head	INSIDE MIDDLE
1 Each	CRUCIAL DRUM SKIMMER #549-56	INSIDE MIDDLE
0	CRUCIAL SYSTEM COMPONENTS/SUPPLIES	INSIDE MIDDLE
1 Each	FAST TANK #1011-29, 1000 gallon	INSIDE BACK
6 Each	FIRE HOSE, 1.5" x 50'	TOTE #17
1 Each	FUEL CAN, 2.5 gallon diesel container	TOTE #20
1 Each	HONDA OUTBOARD FUEL TANK WITH FUEL LINE, 6 gallon tank	TOTE #21
1 Each	HONDA OUTBOARD FUEL TANK WITH FUEL LINE, 3 gallon tank	TOTE #20
2 Each	ANCHORS, 22lb Danworth with chains	INSIDE BACK
2 Each	BOAT PADDLES, 5' adjustable	INSIDE BACK MOUNTED TO RIGHT DOOR
4 Each	LIFE JACKETS, 3 - XL, 1 - L	TOTE #19
3 Each	DECON BRUSHES, 1 - 6"handle, 2 - 20" handles	INSIDE TOTE #5
2 Each	DECON CONTAINMENTS	INSIDE BACK
0	MULTI-USE SPRAYER, 1 gallon	INSIDE GARBAGE CAN
1	GARBAGE CANS, 42 gallon	INSIDE MIDDLE
1 Each	SWEEP BROOM	INSIDE BACK LEFT WALL
1 Each	DUST PAN	INSIDE BACK LEFT WALL
2 Each	STEEL RAKES	BACK LEFT TOP SHELF
2 Each	LEAF RAKES	BACK LEFT TOP SHELF
2 Each	DIP NETS, 1 - 8', 1 - 12'	INSIDE MIDDLE MOUNTED LEFT TOP SHELF
2 Each	PIKE POLES, 1 - 8', 1 - 12'	INSIDE MIDDLE MOUNTED LEFT TOP SHELF
2 Each	SPADE SHOVELS	INSIDE BACK MOUNTED RIGHT TOP SHELF
2 Each	FLAT SHOVELS	INSIDE BACK MOUNTED RIGHT TOP SHELF
2 Each	PITCH FORKS	INSIDE BACK MOUNTED RIGHT TOP SHELF
7	T-POSTS, 5'	INSIDE BACK ON RIGHT SIDE FLOOR

1 Each	T-POST DRIVER	INSIDE BACK ON RIGHT SIDE FLOOR
1 Each	T-POST PULLER	INSIDE BACK ON RIGHT SIDE FLOOR
1 Each	I-COM RADIO, MD #IC, F121/SN#5177611	INSIDE OFFICE FORWARD
1 Each	AWNING DEPLOYMENT ROD	INSIDE OFFICE FORWARD
1 Each	SPARE TIRE, ST 225/75-R 15	INSIDE BACK
1 Each	4 WAY LUG WRENCH	INSIDE BACK
1 Each	FIRST AID KIT, MD# FAC-4/200 Man	INSIDE OFFICE FORWARD
1 Each	FIRE EXTINGUISHER, 5lb hand held	INSIDE OFFICE FORWARD
0	COMBO LOCKS	BACK DOOR
1 Each	ROOF TOP CARGO COVER (TARP)	ON ROOF
1 Set	TIRE CHOCKS	INSIDE BACK
0	ADJUSTABLE BALL MOUNT, 2" and 2 5/16" balls	INSIDE BACK
50 Each	ABSORBANT BOOM, 10' x 8", 10 per bale	ON ROOF
20 Bales Each	ABSORBANT PADS, 17" x 19", 100 per bale	INSIDE MIDDLE
2.5 Rolls	ABSORBANT BLANKET, 30" x 150' per roll	INSIDE MIDDLE
10 Bales	ABSORBANT SWEEP, 19" x 100' per bale	INSIDE MIDDLE
11 Bales	OIL SNARE ON A ROPE, 50' per bale	INSIDE MIDDLE
2 Coils	POLY PROPYLENE ROPE, 3/8" x 600' coils	INSIDE BACK
1 Bag	FLOOR DRY, 50lb bag	INSIDE GARBAGE CAN
2 Each	WASTE WRANGLER BOXES, 1 yard	INSIDE OFFICE FORWARD
2 Rolls	PLASTIC SHEETING, 20' x 100' 6ml per roll	INSIDE BACK
1 Roll	DRUM LINERS, 30" x 50" 6ml, 50 per roll	INSIDE BACK
1 Box	PLASTIC BAGS, 40" x 46" 2ml, 200 per roll	TOTE #22
1 Box	PLUG & DIKE RUG	TOTE # 4
2 Each	BIG O DEGREASER, 1 gallon each	TOTE #15
11 Each	2 CYCLE OIL, 1 quart each	TOTE #1
2 Each	30 WT. MOTOR OIL, 1 quart each	TOTE #1
1 Each	ANTIFREEZE, gallon	TOTE #1
2 Each	STARTING FLUID, 12 oz each	TOTE #1
1 Each	WD-40 LUBRICANT, 12 oz each	TOTE #1
1 Each	CARBURETOR CLEANER, 16 oz	TOTE #1
0	AUTOMATIC TRANSMISSION FLUID, 1 quart each	TOTE #1
1 Each	FUNNEL, pint size	TOTE #1
1 Roll	BANNER GUARD TAPE- DANGER	TOTE #4
1 Roll	BANNER GUARD TAPE- DANGER	TOTE #15
2 Rolls	BANNER GUARD TAPE- CAUTION	TOTE #15
1 Roll	BANNER GUARD TAPE- CAUTION	TOTE #4
3 Rolls	DUCT TAPE	TOTE #2
3 Rolls	DUCT TAPE	TOTE #4
3 Rolls	DUCT TAPE	TOTE #15
3 Each	FLASHLIGHTS	TOTE #2
3 Each	FLASHLIGHTS	TOTE #4
3 Each	FLASHLIGHTS	TOTE #15
1 Each	EMERGENCY WOODEN PLUGS, set of 4	TOTE #4
1 Each	FLAMMABLE LIQUID LABELS	TOTE #4

2 Each	SMALL RAZOR KNIVES	TOTE #2
2 Each	SMALL RAZOR KNIVES	TOTE #4
2 Each	SMALL RAZOR KNIVES	TOTE #15
0	ELECTRICIANS TAPE	TOTE #2
3	LIFE JACKETS, XL	TOTE #3 BOAT GEAR
2 Each	SAFETY GLASSES	TOTE#3 BOAT GEAR
2 Each	RAIN GEAR, XL	TOTE #3 BOAT GEAR
2 Pair	PVC OUTER GLOVES, XL	TOTE #3 BOAT GEAR
3	FLASHLIGHTS	TOTE #3 BOAT GEAR
2 Each	NYLON BOAT LINES, 3/8" x 25' line	TOTE #3 BOAT GEAR
1 Each	FLOATABLE SEAT CUSHION, throw device	TOTE #3 BOAT GEAR
1 Each	FIRE EXTINGUISHER, 2.5lb	FRONT OF TRAILER
1 Each	FIRST AID BLANKET	TOTE #4
2 Each	HAND HELD AIR HORN, 12 oz each	TOTE #4
1	HANDCLEANER, gallon each	TOTE #4
5	RAGS, 10lbs per bag	TOTE #5
4	HARD HATS	TOTE #6
8	GOGGLES	TOTE #6
16	SAFETY GLASSES	TOTE #6
20 Sets	RAIN GEAR, 2XL	TOTE #7
20 Sets	RAIN GEAR, 3XL	TOTE #8
10 Each	TYVEK YELLOW COATED, 2XL	TOTE#9
25 Each	TYVEK WHITE COATED, 3XL	TOTE #9
25 Each	TYVEK WHITE COATED, XL	TOTE #10
25 Each	TYVEK WHITE COATED, 2XL	TOTE #10
25 Pair	BOOTIES, 2XL	TOTE #11
6 Pair	RUBBER BOOTS	TOTE #12
2 Pair	RUBBER BOOTS	TOTE # 13
0	HIP WADERS, size 13	TOTE #13
7 DZN	PVC OUTER GLOVES, XL	TOTE#14
7 DZN	NITRILE GLOVES, XL	TOTE #14
	DECON SUPPLIES	TOTE#15
	MISC. PIPE, GARDEN, AND FIRE HOSE FITTINGS	TOTE#16
	TOOL SET	TOTE #2
1 Each	LOADING RAMP WITH 2 3/8" TURNBUCKLES, 38" x 60"	MOUNTED TO BACK DOOR W/1RATCHET STRAP
0	TRAFFIC CONES, 28"	INSIDE RIGHT REAR
3	TRAFFIC CONES, 12"	INSIDE RIGHT REAR
	GRP BOOK	INSIDE RIGHT REAR WALL MOUNTED DOCUMENT HOLDER
	INVENTORY	INSIDE RIGHT REAR WALL MOUNTED
	MSDS	INSIDE RIGHT REAR WALL