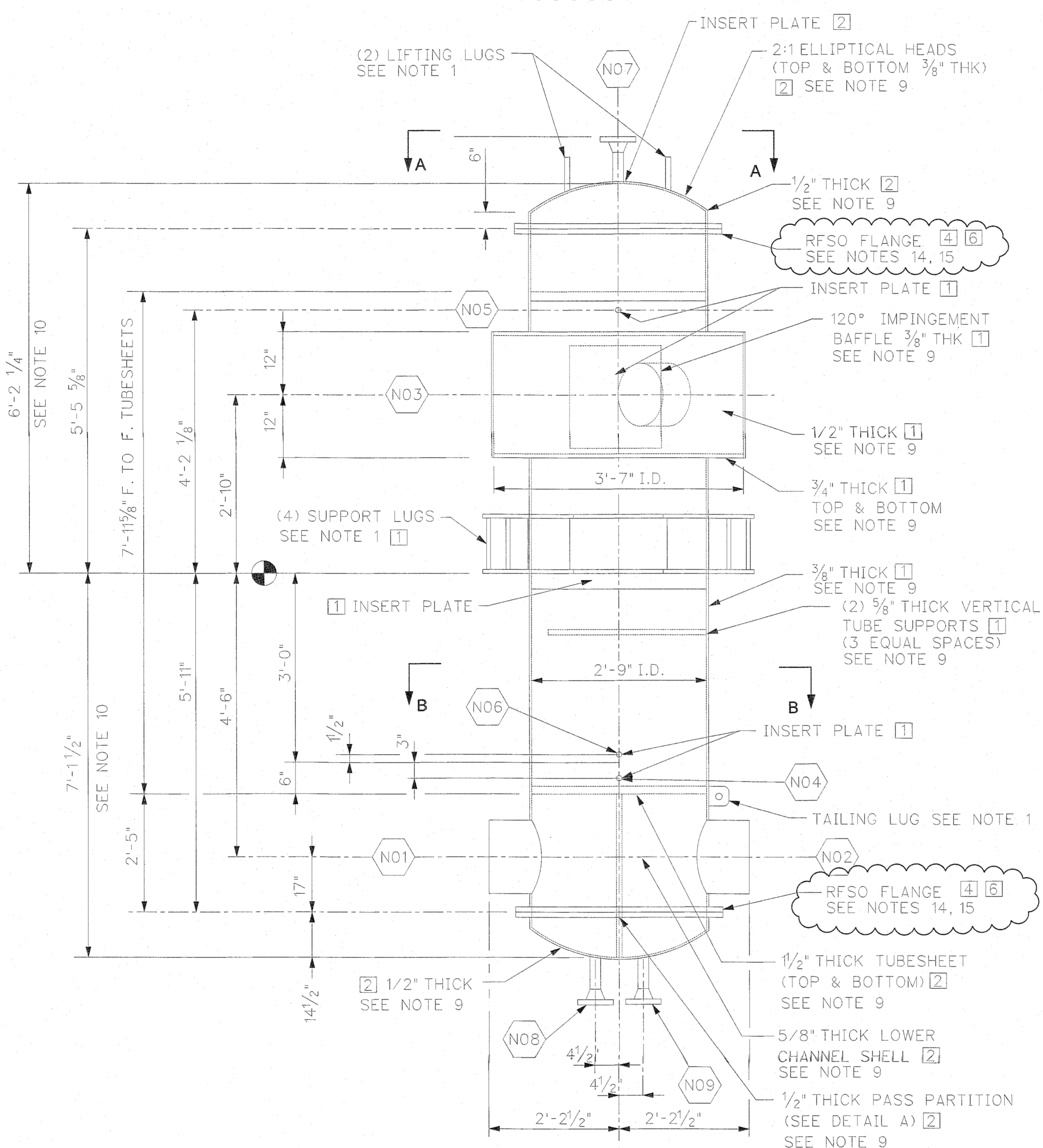


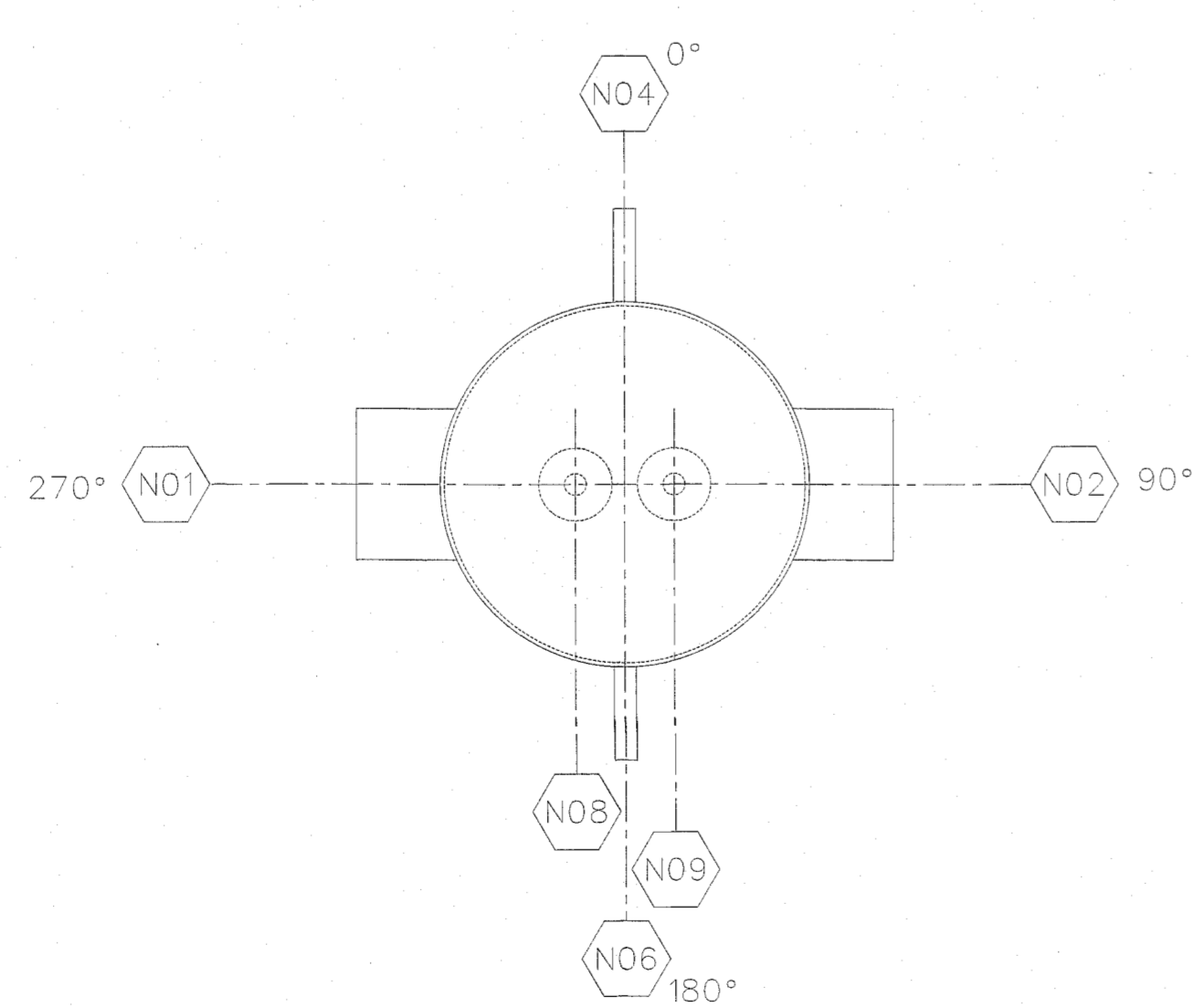
PLAN VIEW SECTION A-A

NOT TO SCALE



ELEVATION VIEW

NOT TO SCALE



PLAN VIEW SECTION B-B

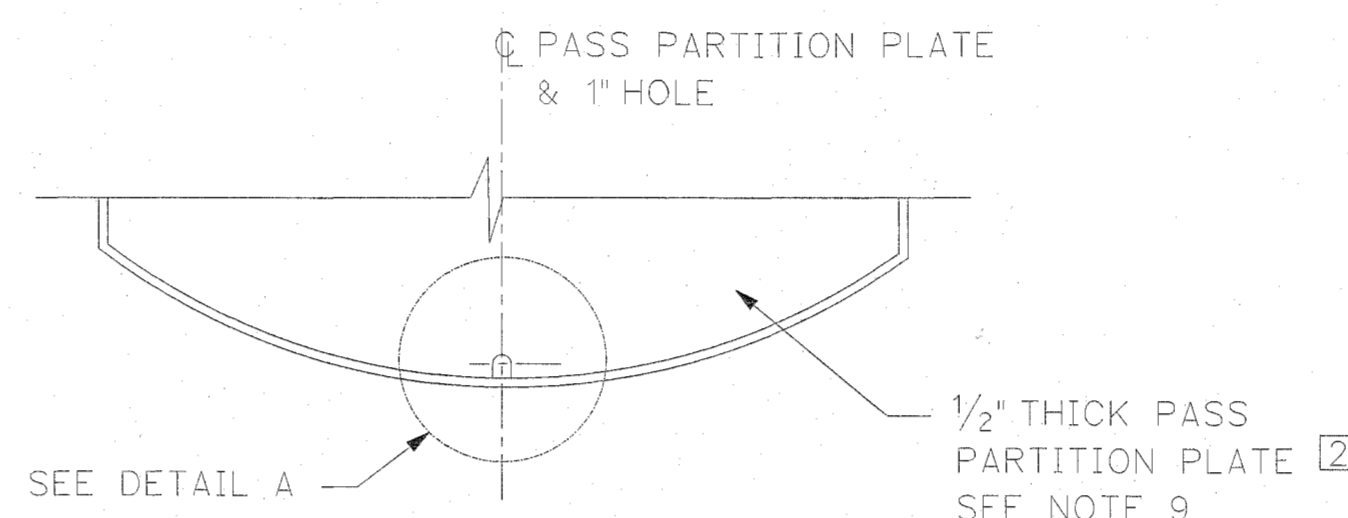
NOT TO SCALE

NOZZLE	SIZE	DESCRIPTION	MINIMUM THICKNESS OR SCH NOTE 9	RATING	END OR FACE TYPE	ORIENT FROM 0°	"Z" DIM. NOTE 7	CONN PIPE SIZE-SCH	MATERIAL	REFERENCE DRAWING/DETAIL
N01	14"	RECIRCULATED CONCENTRATE INLET	5/8"	N/A	BW	270	-4'-6"	14"-10S	[3]	24590-WTP-MV-M59T-00016001 DETAIL 1
N02	14"	RECIRCULATED CONCENTRATE OUTLET	5/8"	N/A	BW	90	-4'-6"	14"-10S	[3]	24590-WTP-MV-M59T-00016001 DETAIL 1
N03	12"	SECONDARY STEAM INLET	5/8"	N/A	BW	20	-2'-10"	12"-10"	[5]	24590-WTP-MV-M59T-00016001 DETAIL 1
N04	2"	REBOILER CONDENSATE OUTLET	80S	N/A	BW	0	-3'-3"	2"-40S	[5]	24590-WTP-MV-M59T-00016001 DETAIL 1
N05	2"	UPPER NON CONDENSABLE VENT	80S	N/A	BW	180	4'-2 3/4"	2"-40S	[5]	24590-WTP-MV-M59T-00016001 DETAIL 1
N06	2"	LOWER NON CONDENSABLE VENT	80S	N/A	BW	180	-2'-10 1/2"	2"-40S	[5]	24590-WTP-MV-M59T-00016001 DETAIL 1
N07	2"	TOP VENT	80S	150*	RFSO	TOP_CTR	7'-2 7/8"	2"-40S	[3]	24590-WTP-MV-M59T-00016001 DETAIL 8
N08	2"	DRAIN	160S OR EQ	150*	RFSO	BOT_CTR	-8'-1 1/2"	2"-40S	[3]	24590-WTP-MV-M59T-00016001 DETAIL 8
N09	2"	DRAIN	160S OR EQ	150*	RFSO	BOT_CTR	-8'-1 1/2"	2"-40S	[3]	24590-WTP-MV-M59T-00016001 DETAIL 8

MATERIALS	
[1]	PLATE: SA240 316L SS (MAXIMUM CARBON 0.030%)
[2]	PLATE: SB575 UNS N06022 (HASTELLOY C-22)
[3]	TUBING/PIPE: SB622 UNS N06022 (HASTELLOY C-22)
[4]	EXTERNAL BOLTING: SA193 B8M UNS S31600 W/ SA 194 8M NUTS
[5]	PIPE: SA312 316L SML SS (MAXIMUM CARBON 0.030%)
[6]	FLANGE: SB584 UNS N06022 (HASTELLOY C-22)

GENERAL NOTES:

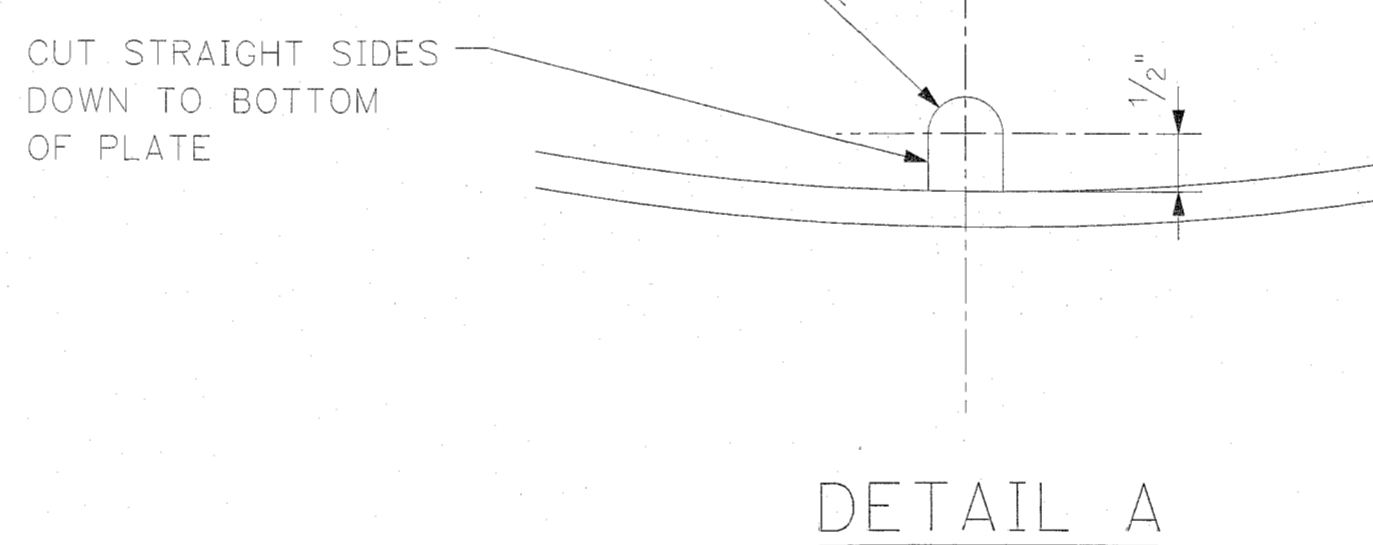
- TAILING LUG, SUPPORT LUG, AND LIFTING LUGS TO BE DESIGNED AND SUPPLIED BY FABRICATOR. ORIENTATION AND LOCATION BY BUYER.
- (222) - 1/2" O.D. X 0.065" NOM (0.060" MIN) WALL THK. X 8'-0" L/4" LONG TUBES, [3] 2 PASSES.
- TUBES TO BE STRENGTH WELDED TO TUBESHEETS.
- REFER TO SPECIFICATION 24590-BOF-3PS-MEVV-T0001 FOR WELDING, FABRICATION, INSPECTION, NDE, AND SHIPPING REQUIREMENTS.
- CONTENTS OF THIS DOCUMENT ARE DANGEROUS WASTE PERMIT AFFECTING.
- TAILING LUG TO BE LOCATED BY FABRICATOR. SEE SPECIFICATION 24590-BOF-3PS-MEVV-T0001.
- ALL "Z" DIMENSIONS MEASURE FROM DATUM LINE TO CENTER LINE OF NOZZLE UNLESS OTHERWISE NOTED. FOR SHELL NOZZLES "Z" DIMENSIONS MEASURED TO TOP OF NOZZLE FACE.
- FABRICATOR TO PROVIDE INSULATION CLIPS. REFER TO MECHANICAL DATASHEET NO. 24590-BOF-MBD-DEP-00001 FOR INSULATION INFORMATION.
- MATERIAL THICKNESS SHOWN ARE THE MINIMUM ALLOWABLE. FABRICATOR TO FINALIZE THE DESIGN THICKNESS.
- FINAL DIMENSION TO BE DETERMINED BY FABRICATOR.
- STEAM IMPINGEMENT PLATES SHALL HAVE ROUNDED CORNERS.
- BUTT WELDED NOZZLES TO EXTEND AT LEAST 6" OFF VESSEL SURFACE.
- FLANGED NOZZLES SHALL EXTEND 8" OFF OF THE VESSEL SURFACE.
- RAISED FACE SLIP ON FLANGE WITH SPIRAL WOUND GASKET (NOTE 15) PER ASME B16.47, CL150, CLASS B AND/OR ASME APPENDIX-2 FLANGE DESIGN.
- SPIRAL WOUND GASKET PER ASME B16.20, FLEXITALLIC CGI STYLE. SUPPLIER TO CONFIRM FINAL GASKET DESIGN (WITH INNER AND OUTER RINGS).
- REVISION 1: REVISED MATERIALS TO USE EXISTING CNP HASTELLOY C-22 TO SUPPORT TREND 24590-WTP-TN-PC-17-0057 TO REPURPOSE PTF EQUIPMENT FOR EMP. UPDATED FLANGE TYPE.



PASS PARTITION PLATE DETAIL

(ROTATED 90° FROM ELEVATION VIEW)

NOT TO SCALE



DETAIL A

PLEASE NOTE THAT SOURCE, SPECIAL NUCLEAR AND BYPRODUCT MATERIALS, AS DEFINED IN THE ATOMIC ENERGY ACT OF 1954 (AEA) ARE REGULATED AT THE U.S. DEPARTMENT OF ENERGY (DOE) FACILITIES EXCLUSIVELY BY DOE ACTING PURSUANT TO ITS AEA AUTHORITY. DOE ASSERTS THAT PURSUANT TO THE AEA IT HAS SOLE AND EXCLUSIVE RESPONSIBILITY AND AUTHORITY TO REGULATE SOURCE, SPECIAL NUCLEAR AND BYPRODUCT MATERIALS AT DOE-OWNED NUCLEAR FACILITIES. INFORMATION CONTAINED HEREIN ON RADIONUCLIDES IS PROVIDED FOR PROCESS DESCRIPTION PURPOSES ONLY.

DWG NO	DRAWING INDEX	TITLE
24590-BOF-ME-DEP-00002001		EQUIPMENT ASSEMBLY DEP EVAPORATOR REBOILER DEP-RBLR-00001

Originator: [Signature] Checked: [Signature] Reviewed: [Signature] Approved: [Signature]

REV	DESCRIPTION	ORG	CHKD	RVWD	APVD	DATE
1	ISSUED FOR PROCUREMENT REV. PER NOTE 16					YJM 6/9/12
0	ISSUED FOR PROCUREMENT					ZD/SC 12/23/16

THIS DRAWING TO BE READ IN CONJUNCTION WITH THE MECHANICAL DATA SHEET NO. 24590-BOF-MBD-DEP-00001 AND SPECIFICATION NO. 24590-BOF-3PS-MEVV-T0001

DWG NO	REFERENCE DRAWINGS	TITLE
24590-WTP-MV-M59T-00016001		VESSEL CONNECTIONS STD DETAILS SHT 1 OF 3
24590-BOF-M6-DEP-00003002		P&ID-BOF/EMP DIRECT FEED LAW EMP PROCESS SYSTEM EVAPORATOR REBOILER DEP-RBLR-00001 (FOR INTERNAL USE ONLY)
24590-WTP-MV-M59T-00001		PRESSURE VESSEL TOLERANCES STANDARD DETAILS
24590-WTP-PW-F30T-00001		WTP END PREP DETAIL FOR FIELD BUTT WELDS

ISSUED BY	PROJECT NO.	DATE
REP-WTP-PDC	24590	
ISSUE STAMP	SITE: HANFORD	
	AREA: 200E	
	BUILDING NO: 25	
ORIGINATOR	POBEREZYNI, JACK	12/15/16
CHECKER	TSAL, ELAINE	12/15/16
APPROVER	ZAGHEH, YOUSSEF	12/21/16
REVIEWER	SOLTANI, MEHDI	12/21/16
APPROVER	CROW, STAN	12/23/16

REVISION HISTORY

CONTRACT NO: DE-AC27-09W14136

RIVER PROTECTION PROJECT WASTE TREATMENT PLANT 2435 STEVENS CENTER PLACE RICHLAND, WA 99354

**EQUIPMENT ASSEMBLY DEP EVAPORATOR REBOILER DEP-RBLR-00001**

SCALE: NONE

24590-BOF-ME-DEP-00002001

REV 1