

NOZZLE SCHEDULE							
NOZZLE ID	SERVICE	NOMINAL SIZE	REPAD	"Z" DIM.	ANGLE	RADIUS	NOTE
N01	INTAKE AIR	2" SCH. 80S	NO	14'-6"	270	6'-5"	SEE SHEET 11
N02	VENT	3" SCH. 80S W/ 150# RFWN	NO	15'-3"	90	3'-3"	SEE SHEET 10
N03	LAW FEED DRAIN INLET	3" SCH. 80S	NO	12'-3"	15	SIDE	SEE SHEET 9
N04	NOT USED	-	-	-	-	-	-
N05	LAB EFFLUENT INLET	3" SCH. 80S	NO	12'-3"	65	SIDE	SEE SHEET 9
N06	MANWAY	24" OD X 5/8" ROLLED PLATE W/ 150# RFWN	NO	15'-6"	225	4'-6"	SEE SHEET 9
N07	AGITATOR	50" STUDDING OUTLET	NO	15'-2 3/4"	CENTER	CENTER	SEE SHEET 8
N07A	AGITATOR MOUNTING	12" SCH. 40S W/ 150# RFSO	NO	16'-0"	CENTER	CENTER	SEE SHEET 8
N08	SCRUBBER BLOWDOWN INLET	3" SCH. 80S	NO	12'-3"	85	SIDE	SEE SHEET 9
N09	VARIOUS VESSEL OVERFLOW INLET	10" SCH. 80S	YES	14'-9"	30	5'-9"	SEE SHEET 9
N10	RLD INLET	3" SCH. 80S	NO	12'-3"	55	SIDE	SEE SHEET 9
N11	INSTRUMENT (TEMPERATURE) W/ STANDPIPE	2" SCH. 160 W/ 150# RFSO	NO	14'-6"	290	6'-5"	SEE SHEET 12
N11A	THERMOWELL	1" SCH. 80S	NO	N/A	290	6'-5"	SEE SHEET 12
N12	SPRAY NOZZLE	10" SCH. 80S W/ 150# RFWN	NO	14'-9"	130	5'-9"	SEE SHEET 10
N12A	INLET TO SPRAY NOZZLE	3" SCH. 80S W/ 150# RFWN	NO	15'-3"	130	5'-9"	SEE SHEET 10
N13	PUMP DEP-PMP-00001A	20" OD X 5/8" ROLLED PLATE W/ 150# FFWN	YES	15'-3"	180	5'-0"	SEE SHEET 8
N14	PUMP DEP-PMP-00001B	20" OD X 5/8" ROLLED PLATE W/ 150# FFWN	YES	15'-3"	0	5'-0"	SEE SHEET 8
N15	INSTRUMENT (LEVEL) W/ STANDPIPE	2" SCH. 160 W/ 150# RFSO	NO	14'-6"	280	6'-5"	SEE SHEET 13
N16	OVERFLOW	10" SCH. 80S	YES	11'-0 1/2"	135	SIDE	SEE SHEET 11
N17	NOT USED	-	-	-	-	-	-
N18	SPRAY NOZZLE	10" SCH. 80S W/ 150# RFWN	NO	14'-9"	310	5'-9"	SEE SHEET 10
N18A	INLET TO SPRAY NOZZLE	3" SCH. 80S W/ 150# RFWN	NO	15'-3"	310	5'-9"	SEE SHEET 10
N19	SUMP PUMP DISCHARGE INLET	3" SCH. 80S	NO	12'-3"	95	SIDE	SEE SHEET 9
N20	SAMPLING LINE RETURN INLET	2" SCH. 80S	NO	15'-0"	55	5'-9"	SEE SHEET 9
N21	SPARE	2" SCH. 80S w/ SCH. 80S WELD CAP	NO	15'-0"	330	4'-6"	SEE SHEET 11
N22	SPARE	3" SCH. 80S w/ SCH. 10S WELD CAP	NO	15'-0"	300	4'-6"	SEE SHEET 10
N23	FUME HOOD & EVAP DRAIN INLET W/ DIP PIPE	4" SCH. 80S	NO	12'-3"	45	SIDE	SEE SHEET 13
N24	SPARE	10" SCH. 80S w/ SCH. 10S WELD CAP	YES	14'-9"	150	5'-9"	SEE SHEET 11
N25	EVAP CONCENTRATE DRAIN INLET	1 1/2" SCH. 80S	NO	15'-0"	120	3'-3"	SEE SHEET 10
N26	DEP-HX-00001 DRAIN INLET	3" SCH. 80S	NO	12'-3"	30	SIDE	SEE SHEET 9

NOTE: "Z" DIMENSION IS MEASURED FROM BOTTOM TANGENT LINE. SEE NOZZLE DETAILS.

Please note that source, special nuclear, and byproduct materials, as defined in the Atomic Energy Act of 1954 (AEA) are regulated at the U. S. Department of Energy (DOE) facilities exclusively by DOE acting pursuant to its AEA authority. DOE asserts that pursuant to AEA, it has sole and exclusive responsibility and authority to regulate source, special nuclear, and byproduct materials at DOE-owned nuclear facilities. Information contained herein on radionuclides is provided for process description purposes only.

REVISIONS				
REV.	BY	CHK.	DATE	DESCRIPTION
0	SKS	NH	11/9/2017	FOR FABRICATION

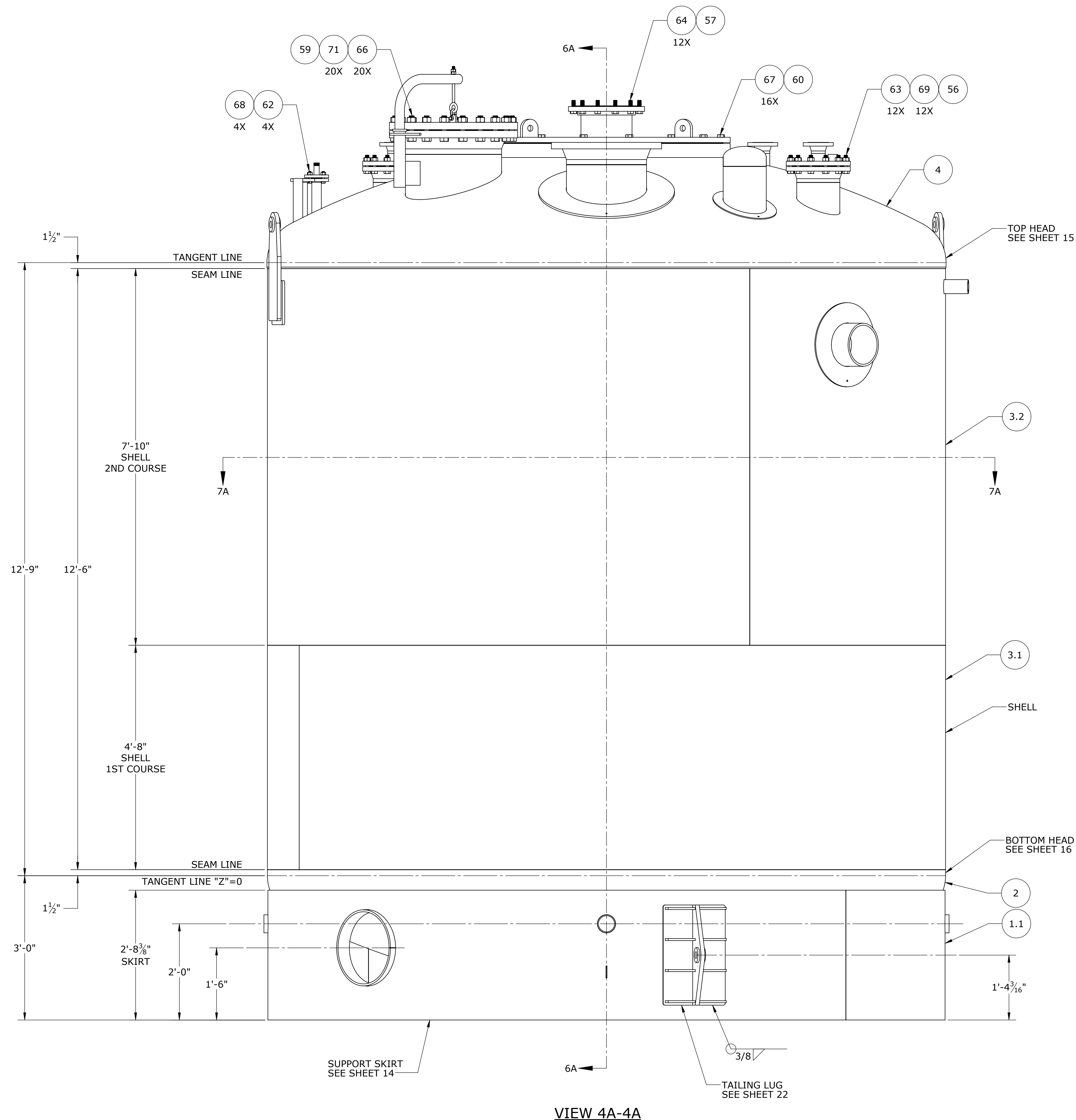
**GREENBERRY INDUSTRIAL**  
 5330 NE ELLIOTT CIRCLE  
 CORVALLIS, OR 97330  
 PHONE: (541) 757-8458

**GREENBERRY INDUSTRIAL**  
 600 SE MARITIME AVE. SUITE 190  
 VANCOUVER, WA 98661  
 PHONE: (360) 567-0006  
 WWW.GREENBERRY.COM

**BECHTEL**  
 RIVER PROTECTION PROJECT WTP  
 RICHLAND, WA  
 PROJECT #: 24590  
 CONTRACT #: DE-AC27-01RV14136  
 P.O. #: 24590-CM-POA-MVSC-00005

**DEP-VSL-00001 LOW POINT DRAIN VESSEL  
 NOZZLE SCHEDULE & NOZZLE PLAN**

SIZE	DATE: 6/1/2017	DRAWING #:	REV.
<b>D</b>	SHEET: 3 OF 23	<b>500005.001-LPD-3</b>	0



VIEW 4A-4A

Please note that source, special nuclear, and byproduct materials, as defined in the Atomic Energy Act of 1954 (AEA) are regulated at the U. S. Department of Energy (DOE) facilities exclusively by DOE acting pursuant to its AEA authority. DOE asserts that pursuant to AEA, it has sole and exclusive responsibility and authority to regulate source, special nuclear, and byproduct materials at DOE-owned nuclear facilities. Information contained herein on radionuclides is provided for process description purposes only.

REVISIONS				
REV.	BY	CHK.	DATE	DESCRIPTION
0	SKS	NH	11/9/2017	FOR FABRICATION

<p><b>GREENBERRY INDUSTRIAL</b></p>	GREENBERRY INDUSTRIAL 5330 NE ELLIOTT CIRCLE CORVALLIS, OR 97330 PHONE: (541) 757-8458
	600 SE MARITIME AVE, SUITE 190 VANCOUVER, WA 98661 PHONE: (360) 567-0006 WWW.GREENBERRY.COM
BECHTEL RIVER PROTECTION PROJECT WTP RICHLAND, WA PROJECT #: 24590 CONTRACT #: DE-AC27-01RV14136 P.O. #: 24590-CM-POA-MVSC-00005	
DEP-VSL-00001 LOW POINT DRAIN VESSEL FRONT VIEW	
SIZE: <b>D</b> SHEET: 4 OF 23	DATE: 6/1/2017 DRAWING #: <b>500005.001-LPD-4</b>
REV. 0	