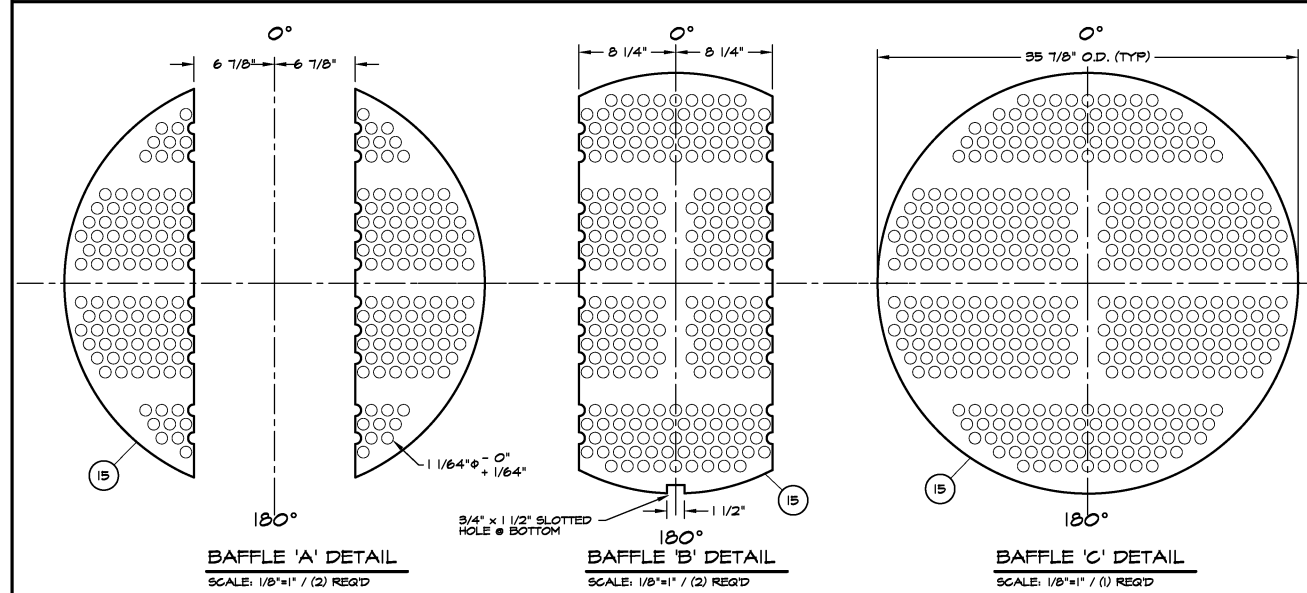
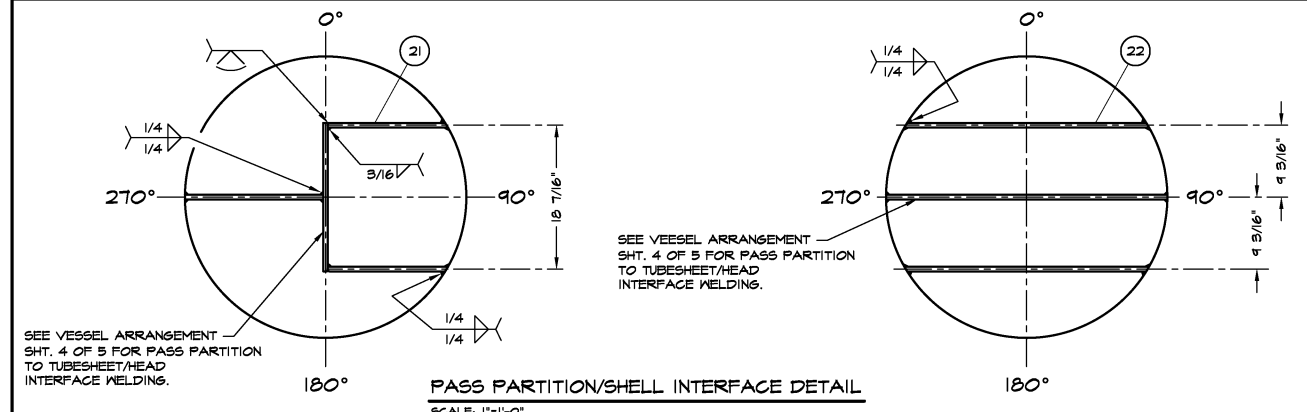
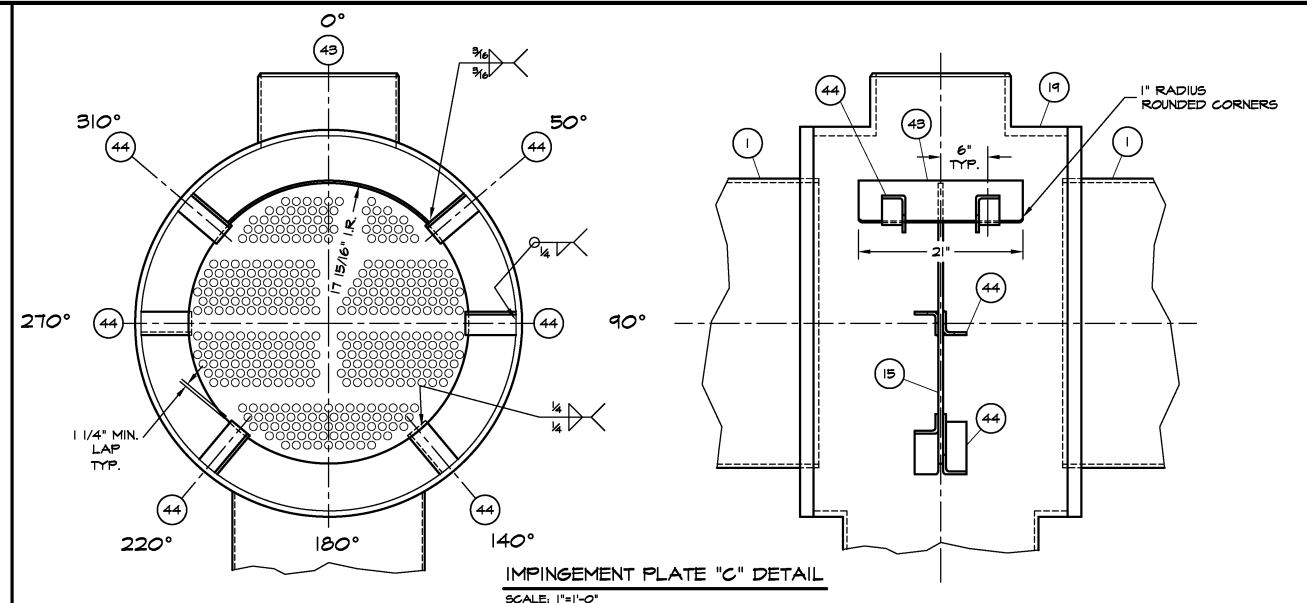


Please note that source, special nuclear, and byproduct materials, as defined in the Atomic Energy Act of 1954 (AEA) are regulated at the U. S. Department of Energy (DOE) facilities exclusively by DOE acting pursuant to its AEA authority. DOE asserts that pursuant to AEA, it has sole and exclusive responsibility and authority to regulate source, special nuclear, and byproduct materials at DOE-owned nuclear facilities. Information contained herein on radionuclides is provided for process description purposes only.



TUBESHEET NOTES

TOTAL TUBES REQUIRED: 406

TUBE SIZE: 1"ø x 16 long x 16'-0" (0.060" min. wall)

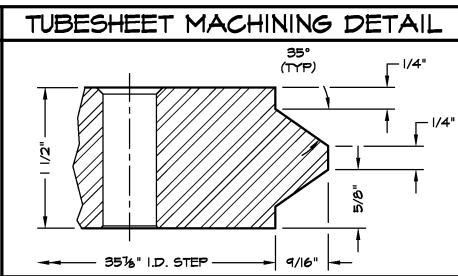
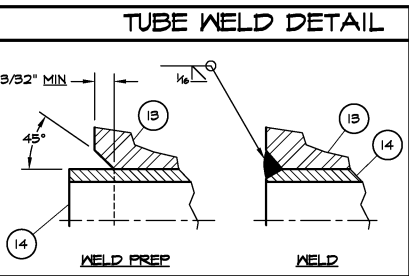
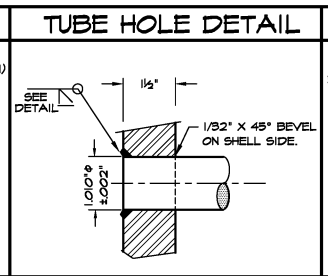
TUBE PITCH: 1 3/8"

MATERIAL: SA-213 TP-304 W/ 0.030% max. C SEAMLESS

TUBE HOLES: (TEMA CLOSE FIT) 1.010" ± 0.002"

1. NO GROOVING REQUIRED

2. TUBES TO BE STRENGTH WELDED - SEE DETAIL



REVISIONS

NO	DESCRIPTION	REV BY	APP'D BY	DATE
2	NO CHANGES THIS SHEET	MLV	DRM	10/31/17
1	REVISED PER CUSTOMER COMMENTS	MLV	DRM	08/11/17
NO				

NORTHWEST COPPER WORKS, INC.
1303 N. RIVER STREET • PORTLAND, OREGON • 97227

EVAPORATOR PROJECT #2
TUBESHEET AND BAFFLE DETAILS

BEGHTEL NATIONAL RIVER PROTECTION PROJECT WASTE TREATMENT PLANT
2435 Stevens Center Place
Richland, WA 99354

EQUIP. NO. 24590-BOF-ME-DEP-COND-00001
P.O. NO. 24590-CM-POA-MEVV-00003
DWS. NO. D-1730
SHT. NO. 3 OF 5

SCALE AS NOTED JOB NO. 1730
DATE 05/22/17 CHKD. BY RVC
DWN. BY MLV APP'D. BY MLV