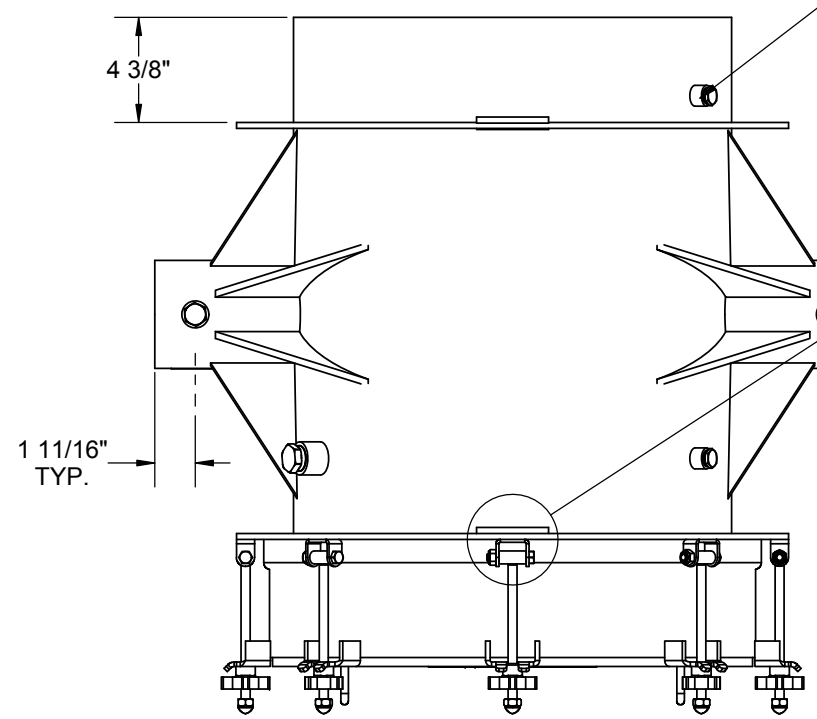
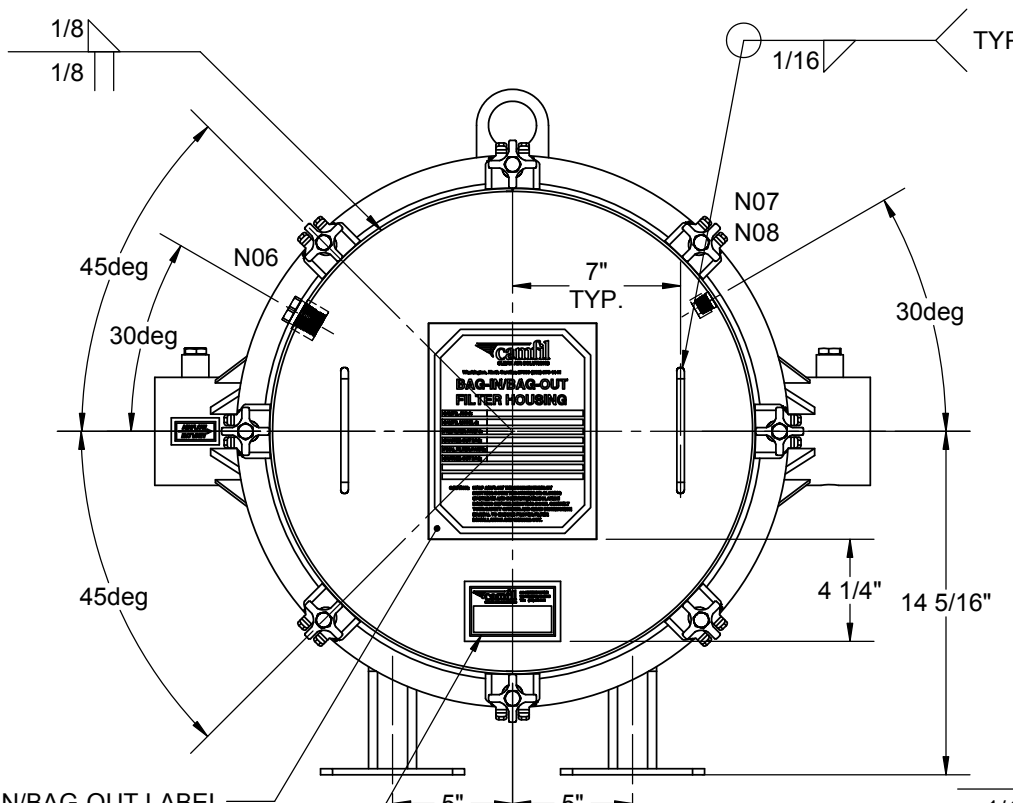


-REFERENCE OVERALL DRAWING S17-0114-001
-PARTS SUBJECT TO PMI WILL BE MECHANICALLY ETCHED WITH "PMIV".
-ALL MATERIAL SHALL BE 316/316L EXCEPT HARDWARE
-HARDWARE SHALL BE 300 SERIES SST WITH ALUMINUM STAR KNOBS

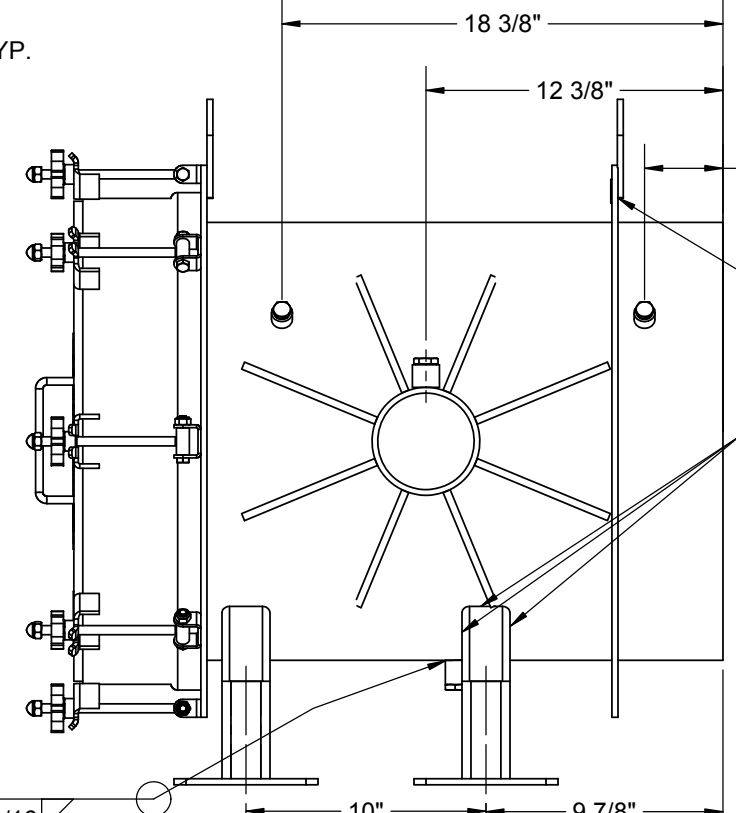
DVP-HEPA-00003A/B
DVP-HEPA-00004A/B



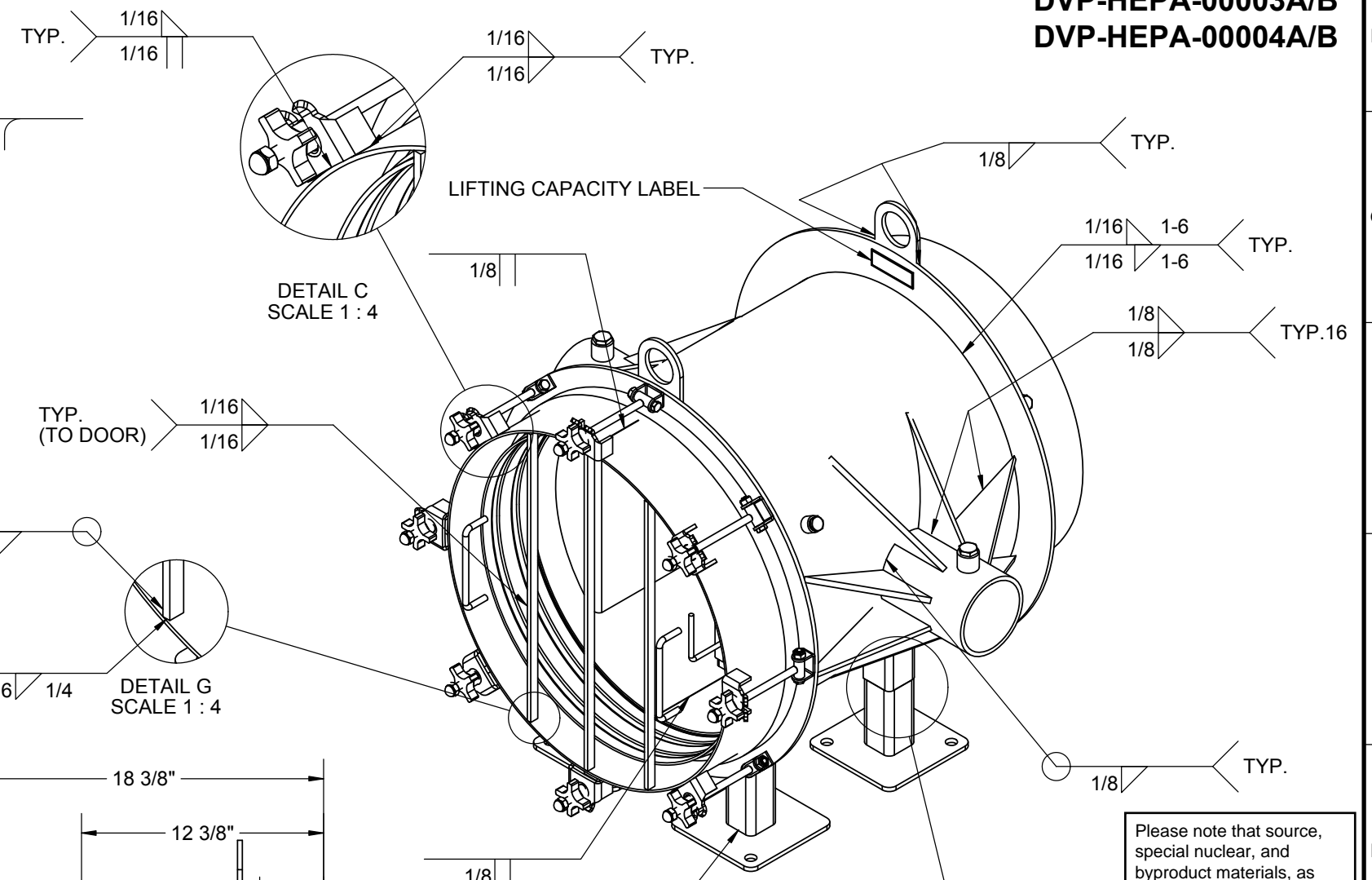
TOP VIEW



FRONT VIEW



SIDE VIEW



ISOMETRIC VIEW

Please note that source, special nuclear, and byproduct materials, as defined in the Atomic Energy Act of 1954 (AEA) are regulated at the U. S. Department of Energy (DOE) facilities exclusively by DOE acting pursuant to its AEA authority. DOE asserts that pursuant to AEA, it has sole and exclusive responsibility and authority to regulate source, special nuclear, and byproduct materials at DOE-owned nuclear facilities. Information contained herein on radionuclides is provided for process description purposes only.

UNLESS OTHERWISE SPECIFIED TOLERANCES ARE:
 ANGULAR: ± 1
 FRACTION: $\pm 1/16$ "
 DECIMAL: ± 0.0625 "

camfil WASHINGTON NORTH CAROLINA www.camfil.com

DRAWING TITLE:
SHOP DETAIL AND ASSEMBLY DRAWING
 W.O:G40886A

△ G	WAW 3/9/18	NO CHANGES THIS SHEET	N/A	PB 3/12/18
△ F	WAW 12/5/17	ADDED DIMENSIONS AND CALLOUTS	PB	AC 12/5/17
REV.	DRAWN BY DATE	DESCRIPTION:	CHECK BY DATE	APPR. BY DATE

DRAWN BY:
WAW
DATE:
5/11/17

CHECK BY:
AC
DATE:
5/18/17

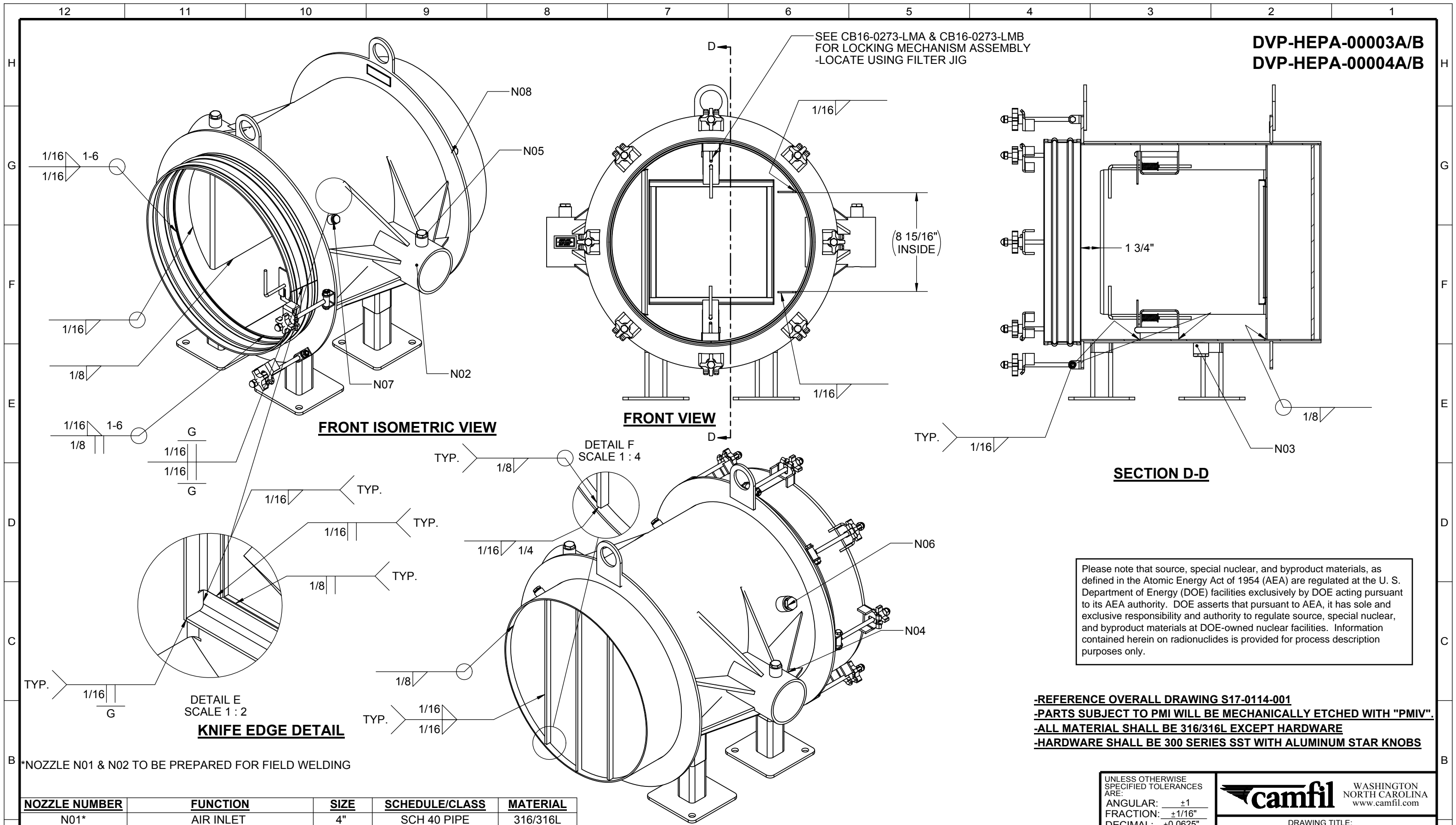
APPR. BY:
RDC
DATE:
5/18/17

DWG SIZE	DRAWING NO.:	SHEET	OF	REV.
B	CB16-0273	1	3	G

SCALE: **1:8**

DVP-HEPA-00003A/B
DVP-HEPA-00004A/B

SEE CB16-0273-LMA & CB16-0273-LMB
 FOR LOCKING MECHANISM ASSEMBLY
 -LOCATE USING FILTER JIG



Please note that source, special nuclear, and byproduct materials, as defined in the Atomic Energy Act of 1954 (AEA) are regulated at the U. S. Department of Energy (DOE) facilities exclusively by DOE acting pursuant to its AEA authority. DOE asserts that pursuant to AEA, it has sole and exclusive responsibility and authority to regulate source, special nuclear, and byproduct materials at DOE-owned nuclear facilities. Information contained herein on radionuclides is provided for process description purposes only.

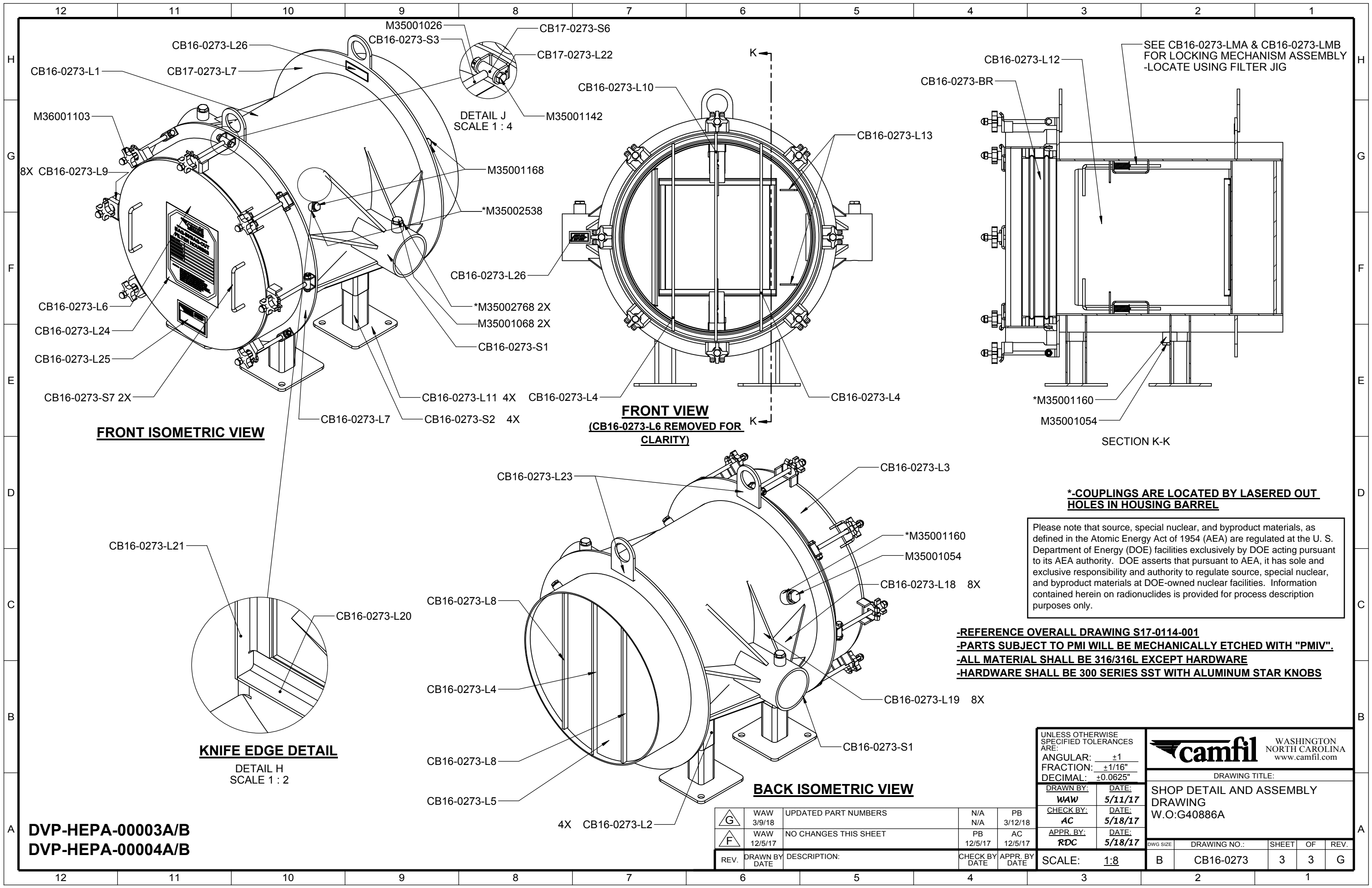
-REFERENCE OVERALL DRAWING S17-0114-001
-PARTS SUBJECT TO PMI WILL BE MECHANICALLY ETCHED WITH "PMIV".
-ALL MATERIAL SHALL BE 316/316L EXCEPT HARDWARE
-HARDWARE SHALL BE 300 SERIES SST WITH ALUMINUM STAR KNOBS

*NOZZLE N01 & N02 TO BE PREPARED FOR FIELD WELDING

NOZZLE NUMBER	FUNCTION	SIZE	SCHEDULE/CLASS	MATERIAL
N01*	AIR INLET	4"	SCH 40 PIPE	316/316L
N02*	AIR OUTLET	4"	SCH 40 PIPE	316/316L
N03	DRAIN	3/4"	#150 HALF COUPLING	316/316L
N04	UPSTREAM STATIC PORT	1/2"	#150 HALF COUPLING	316/316L
N05	DOWNSTREAM STATIC PORT	1/2"	#150 HALF COUPLING	316/316L
N06	INJECTION PORT	3/4"	#150 HALF COUPLING	316/316L
N07	UPSTREAM SAMPLE PORT	3/8"	#150 HALF COUPLING	316/316L
N08	DOWNSTREAM SAMPLE PORT	3/8"	#150 HALF COUPLING	316/316L

G	WAW	NO CHANGES THIS SHEET	N/A	PB
	3/9/18		N/A	3/12/18
F	WAW	NO CHANGES THIS SHEET	PB	AC
	12/5/17		12/5/17	12/5/17
REV.	DRAWN BY DATE	DESCRIPTION:	CHECK BY DATE	APPR. BY DATE

UNLESS OTHERWISE SPECIFIED TOLERANCES ARE: ANGULAR: ± 1 FRACTION: $\pm 1/16$ " DECIMAL: ± 0.0625 "		WASHINGTON NORTH CAROLINA www.camfil.com DRAWING TITLE: SHOP DETAIL AND ASSEMBLY DRAWING W.O:G40886A
DRAWN BY: WAW	DATE: 5/11/17	
CHECK BY: AC	DATE: 5/18/17	
APPR. BY: RDC	DATE: 5/18/17	
DWG SIZE: B	DRAWING NO.: CB16-0273	SHEET 2 OF 3
SCALE: 1:8		REV. G



FRONT ISOMETRIC VIEW

FRONT VIEW
(CB16-0273-L6 REMOVED FOR CLARITY)

SECTION K-K

KNIFE EDGE DETAIL

BACK ISOMETRIC VIEW

***-COUPLINGS ARE LOCATED BY LASERED OUT HOLES IN HOUSING BARREL**

Please note that source, special nuclear, and byproduct materials, as defined in the Atomic Energy Act of 1954 (AEA) are regulated at the U. S. Department of Energy (DOE) facilities exclusively by DOE acting pursuant to its AEA authority. DOE asserts that pursuant to AEA, it has sole and exclusive responsibility and authority to regulate source, special nuclear, and byproduct materials at DOE-owned nuclear facilities. Information contained herein on radionuclides is provided for process description purposes only.

- REFERENCE OVERALL DRAWING S17-0114-001
- PARTS SUBJECT TO PMI WILL BE MECHANICALLY ETCHED WITH "PMIV".
- ALL MATERIAL SHALL BE 316/316L EXCEPT HARDWARE
- HARDWARE SHALL BE 300 SERIES SST WITH ALUMINUM STAR KNOBS

DVP-HEPA-00003A/B
DVP-HEPA-00004A/B

G	WAW	UPDATED PART NUMBERS	N/A	PB
	3/9/18		N/A	3/12/18
F	WAW	NO CHANGES THIS SHEET	PB	AC
	12/5/17		12/5/17	12/5/17
REV.	DRAWN BY DATE	DESCRIPTION:	CHECK BY DATE	APPR. BY DATE

UNLESS OTHERWISE SPECIFIED TOLERANCES ARE:	
ANGULAR:	±1
FRACTION:	±1/16"
DECIMAL:	±0.0625"
DRAWN BY:	DATE:
WAW	5/11/17
CHECK BY:	DATE:
AC	5/18/17
APPR. BY:	DATE:
RDC	5/18/17

camfil WASHINGTON NORTH CAROLINA www.camfil.com				
DRAWING TITLE:				
SHOP DETAIL AND ASSEMBLY DRAWING				
W.O:G40886A				
DWG SIZE	DRAWING NO.:	SHEET	OF	REV.
B	CB16-0273	3	3	G

SCALE: 1:8