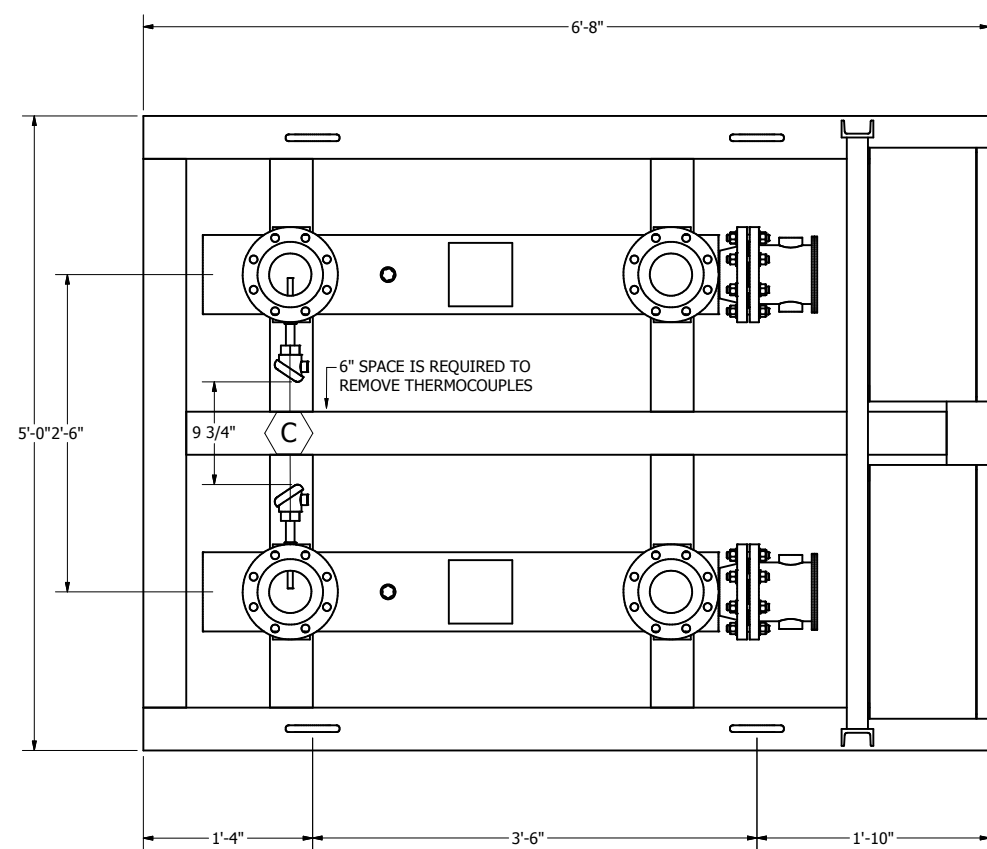
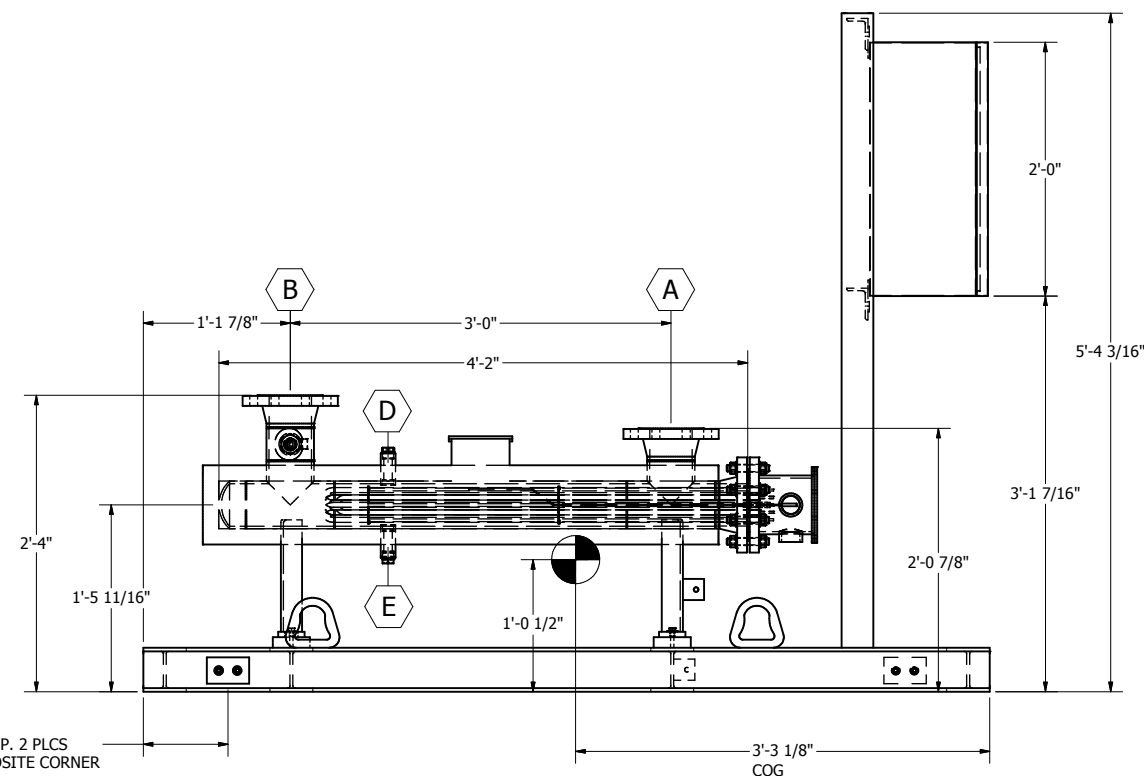
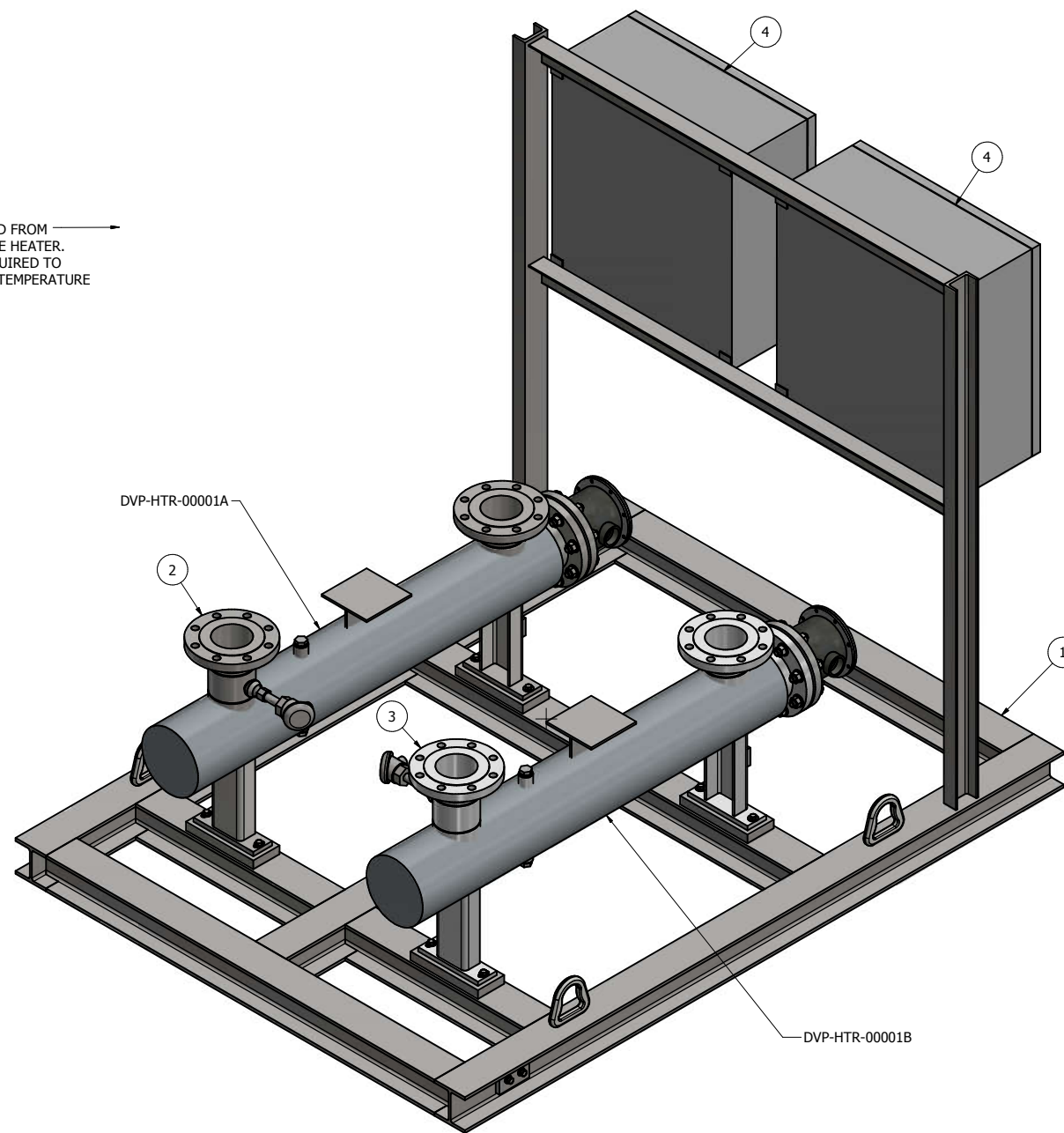




ITEMS		
ITEM	QTY	DESCRIPTION
1	1	FRAME ASSEMBLY
2	1	CSS4F6N33M4XSLTJWJ-02
3	1	CSS4F6N33M4XSLTJWJ-01
4	2	SCR4X-14A-4-1C-UL



24" PULL SPACE REQUIRED FROM EDGE OF SKID TO REMOVE HEATER. HEATER REMOVAL IS REQUIRED TO REPLACE ELEMENT OVER TEMPERATURE THERMOCOUPLE.



Please note that source, special nuclear, and byproduct materials, as defined in the Atomic Energy Act of 1954 (AEA) are regulated at the U. S. Department of Energy (DOE) facilities exclusively by DOE acting pursuant to its AEA authority. DOE asserts that pursuant to AEA, it has sole and exclusive responsibility and authority to regulate source, special nuclear, and byproduct materials at DOE-owned nuclear facilities. Information contained herein on radionuclides is provided for process description purposes only.

- CLEAN AND PAINT SKID PER GAUMER DATA SHEET.
- HEATER TO BE INSULATED WITH 1 1/2" CAL SILICATE AND ALUMINUM JACKET.
- EACH HEATER WEIGHS 35 LBS. EACH VESSEL WEIGHS 145 LBS. TOTAL DRY WEIGHT 1300 LBS. ADD 500 LBS FOR SHIPPING.
- FIELD WELDS ATTACHING SKID TO BASEPLATE SHALL BE 1/4" FILLET WELDS AND TOTAL 24" IN LENGTH AS A MINIMUM. WELD LOCATIONS SHOULD BE EQUALLY SPACED AROUND PERIMETER IN ANY COMBINATION OF 4 WELDS OR MORE THAT IS EQUAL TO OR GREATER THAN 24" TOTAL WELD LENGTH.

NOZZLE	lb			lb-ft		
	F <sub>x</sub>	F <sub>y</sub>	F <sub>z</sub>	M <sub>x</sub>	M <sub>y</sub>	M <sub>z</sub>
4" 150#	1080	1080	1080	804	804	804

POS	Dead Weight (lb)			Shear Load (lbf)		
	F <sub>x</sub>	F <sub>y</sub>	F <sub>z</sub>	F <sub>x</sub>	F <sub>y</sub>	F <sub>z</sub>
1	0	0	325	117	117	0
2	0	0	325	117	117	0
3	0	0	325	117	117	0
4	0	0	325	117	117	0

CONNECTION	SERVICE	SIZE/RATING/TYPE	DVP-HTR-00001A	DVP-HTR-00001B
A	INLET	4" 150# RFWN	N01	N03
B	OUTLET	4" 150# RFWN	N02	N04
C	TTW	3/4" 3000# TOL		
D	SPARE	3/4" 3000# THRD'D CPLG	N08	N07
E	DRAIN	3/4" 3000# THRD'D CPLG	N06	N05

CUSTOMER: BECHTEL NATIONAL INC  
 DOCUMENT CODE:  
 PROJECT PO: 24590-CD-POA-MEE0-00004  
 PROJECT NUMBER: C27106  
 PROJECT NAME: HANFORD TANK WASTE TREATMENT AND IMMOBILIZATION PLANT (WTP PROJECT)  
 PROJECT LOCATION: RICHLAND, WA

REV	DESCRIPTION	DATE	APPROVED
1	IFC	9/15/2017	JL
0	IFC	6/19/2017	JL
A	IFA	4/28/2017	JL



13616 HEMPSTEAD ROAD HOUSTON, TEXAS USA  
 PHONE: (713) 460-5200 FAX: (713) 460-1444

SCALE: 1 1/2" = 1'  
 DATE: 4/28/2017  
 DRAWING NO.: C27106-GAR  
 REV: 1  
 DWG BY: DS  
 DESCRIPTION: GENERAL ARRANGEMENT  
 DVP HEPA FILTER PREHEATER SKID  
 CUSTOMER: BECHTEL NATIONAL INC  
 PO#: 24590-CD-POA-MEE0-00004