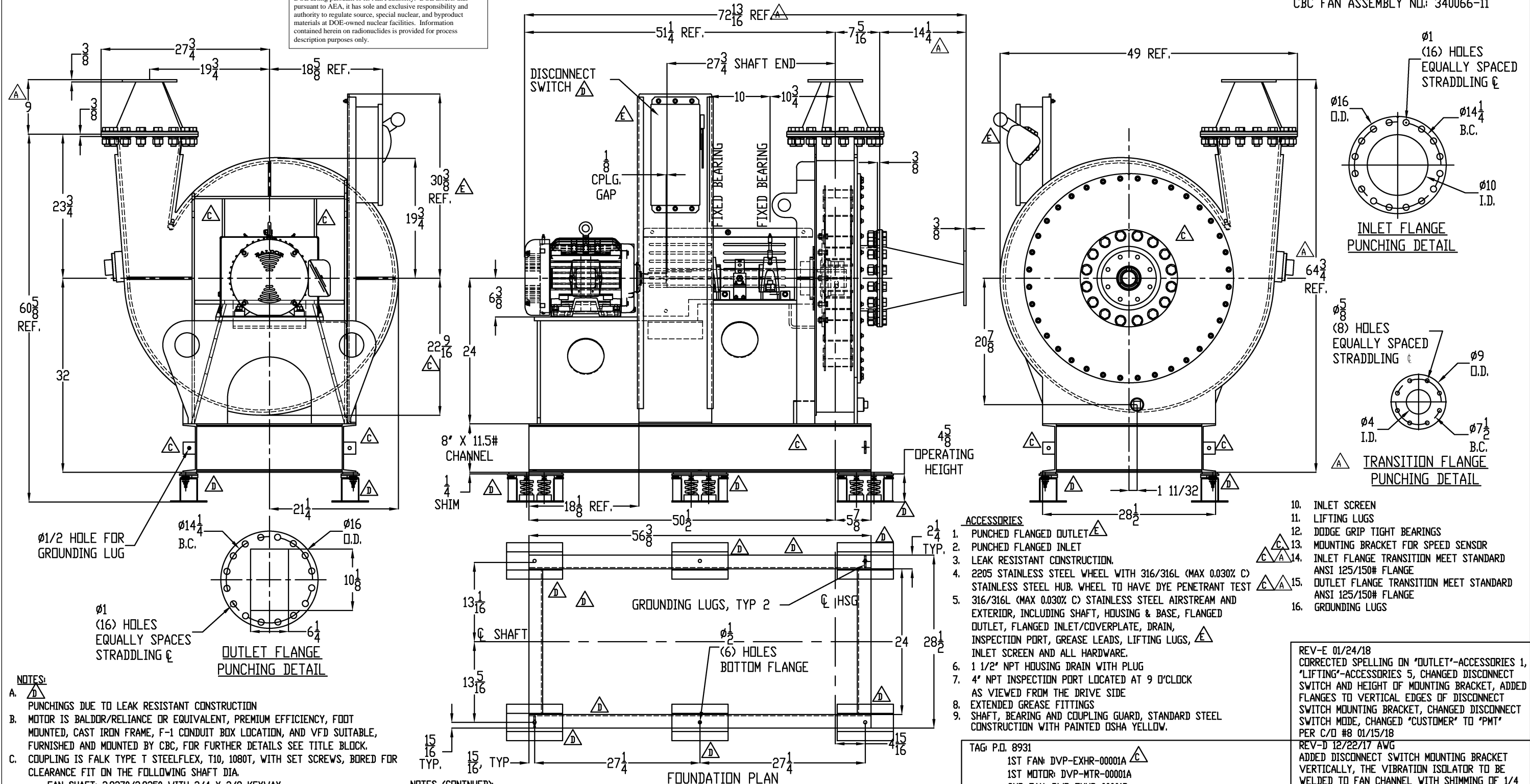


Please note that source, special nuclear, and byproduct materials, as defined in the Atomic Energy Act of 1954 (AEA) are regulated at the U. S. Department of Energy (DOE) facilities exclusively by DOE acting pursuant to its AEA authority. DOE asserts that pursuant to AEA, it has sole and exclusive responsibility and authority to regulate source, special nuclear, and byproduct materials at DOE-owned nuclear facilities. Information contained herein on radionuclides is provided for process description purposes only.

CBC FAN ASSEMBLY NO.: 340066-11



- NOTES:**
- A. PUNCHINGS DUE TO LEAK RESISTANT CONSTRUCTION
 - B. MOTOR IS BALDOR/RELIANCE OR EQUIVALENT, PREMIUM EFFICIENCY, FOOT MOUNTED, CAST IRON FRAME, F-1 CONDUIT BOX LOCATION, AND VFD SUITABLE, FURNISHED AND MOUNTED BY CBC, FOR FURTHER DETAILS SEE TITLE BLOCK.
 - C. COUPLING IS FALK TYPE T STEELFLEX, T10, 1080T, WITH SET SCREWS, BORED FOR CLEARANCE FIT ON THE FOLLOWING SHAFT DIA.
FAN SHAFT: 2.9370/2.9350 WITH 3/4 X 3/8 KEYWAY
MOTOR SHAFT: 1.6250/1.6240 WITH 3/8 X 3/16 KEYWAY
FURNISHED AND MOUNTED BY CBC.
 - D. JOHN CRANE DOUBLE LIP SHAFT SEAL, WITH 316(L) STAINLESS STEEL HOUSING. MODEL NUMBER DC-0035-293-D-316-STD. FURNISHED AND MOUNTED BY CBC.
 - E. MS MODEL M2S-1C 500-1040 LBS. VIBRATION ISOLATORS WITH INTEGRAL SEISMIC RESTRAINT AND INTERNAL ADJUSTMENT FOR 1 INCH DEFLECTION. FURNISHED BY PMT AND MOUNTED BY OTHERS.
 - F. ALL STATIC COMPONENTS TO BE WELDED PER D1.1 CODE WELDING. WHEEL TO BE WELDED BASED ON AWS PROCEDURES.
 - G. WHEEL WITH ANTI-THRUST VANES TO BE G2.5 BALANCED.
 - H. DETAILS OF MATERIAL, WEIGHTS, AND COMPLETE B.O.M. ARE ON 340066-01-02 & 34006-01-03
 - J. 9 X 9 SAMPLE OF EACH SHEET OF STEEL USED.
 - K. PROVIDE SAMPLE OF WHEEL AND HUB

- NOTES (CONTINUED):**
- L. PROVIDE THE FOLLOWING DOCUMENTATION: SAFETY DATA SHEET FOR LUBRICATION, RUN TEST PROCEDURE AND REPORT, BALANCING PROCEDURE AND REPORT, DYE PENETRANT TESTING PROCEDURES AND REPORT, INSPECTION AND TEST PLAN, WELD PROCEDURES AND INSPECTION REPORTS, WELD MAPS, WELDER QUALIFICATION RECORDS, CERTIFICATE OF COMPLIANCE, AND CBC ASSEMBLY CHECKLIST.
EATON DISCONNECT SWITCH, MODEL DH361NWK316, NEMA 4X STAINLESS STEEL FUSIBLE DISCONNECT WITH 2 MYERS HUBS AND 4 SEAL TILE. WIRED FROM DISCONNECT SWITCH TO MOTOR. FURNISHED AND MOUNTED BY CBC.
SPEED SENSOR IS ELECTRO SENSORS. P/N ST420-D1 WITH S0312P0612B0160 PULSAR WRAP.

- ACCESSORIES**
1. PUNCHED FLANGED OUTLET
 2. PUNCHED FLANGED INLET
 3. LEAK RESISTANT CONSTRUCTION.
 4. 2205 STAINLESS STEEL WHEEL WITH 316/316L (MAX 0.030% C) STAINLESS STEEL HUB. WHEEL TO HAVE DYE PENETRANT TEST
 5. 316/316L (MAX 0.030% C) STAINLESS STEEL AIRSTREAM AND EXTERIOR, INCLUDING SHAFT, HOUSING & BASE, FLANGED OUTLET, FLANGED INLET/COVERPLATE, DRAIN, INSPECTION PORT, GREASE LEADS, LIFTING LUGS, INLET SCREEN AND ALL HARDWARE.
 6. 1 1/2" NPT HOUSING DRAIN WITH PLUG
 7. 4" NPT INSPECTION PORT LOCATED AT 9 O'CLOCK AS VIEWED FROM THE DRIVE SIDE
 8. EXTENDED GREASE FITTINGS
 9. SHAFT, BEARING AND COUPLING GUARD, STANDARD STEEL CONSTRUCTION WITH PAINTED OSHA YELLOW.

10. INLET SCREEN
11. LIFTING LUGS
12. DODGE GRIP TIGHT BEARINGS
13. MOUNTING BRACKET FOR SPEED SENSOR
14. INLET FLANGE TRANSITION MEET STANDARD ANSI 125/150# FLANGE
15. OUTLET FLANGE TRANSITION MEET STANDARD ANSI 125/150# FLANGE
16. GROUNDING LUGS

TAG P.O. 8931
 1ST FAN: DVP-EXHR-00001A
 1ST MOTOR: DVP-MTR-00001A
 2ND FAN: DVP-EXHR-00001B
 2ND MOTOR: DVP-MTR-00001B

ORDER #	340066	CUST P.O. #	8931
CUST. PREFERRED METAL TECHNOLOGY	SEE ABOVE	JOB NAME	SAME AS
TAG FAN	SEE ABOVE	DESTINATION	WOODRIDGE, IL
PERFORMANCE			
CFM	OV FT/MIN	SP IN W.G	RPM
200	367	50	3499
MOTOR DATA			
HP	RPM	PHASE	HERTZ
15	3600	3	60
		VOLTAGE	FRAME
		230/460	254T
		TYPE ENCLOSURE	SERVICE FACTOR
		TEFC	1.15

REV-E 01/24/18
 CORRECTED SPELLING ON 'OUTLET'-ACCESSORIES 1, 'LIFTING'-ACCESSORIES 5, CHANGED DISCONNECT SWITCH AND HEIGHT OF MOUNTING BRACKET, ADDED FLANGES TO VERTICAL EDGES OF DISCONNECT SWITCH MOUNTING BRACKET, CHANGED DISCONNECT SWITCH MODE, CHANGED 'CUSTOMER' TO 'PMT' PER C/D #8 01/15/18

REV-D 12/22/17 AWG
 ADDED DISCONNECT SWITCH MOUNTING BRACKET VERTICALLY, THE VIBRATION ISOLATOR TO BE WELDED TO FAN CHANNEL WITH SHIMMING OF 1/4 316L SS AND REMOVED NOTE A ON 340066-01-01 PER C/D #7 12/13/17

CHICAGO BLOWER CORPORATION
 1675 GLEN ELLYN ROAD, GLENDALE HEIGHTS, IL 60139

TITLE: PMT DRAWING (1 OF 3)
 DESIGN 53, SIZE N4, A/8
 CW ROT., UB DISCH.

DR. KJH 08/14/17 DWG. NO. 340066-01-01
 CK. AWG 08/21/17
 CT. REV E

CAUTION
 PRIOR TO ERECTION AND START-UP, REFER TO SERVICE MANUAL FOR INSTRUCTIONS AND SAFETY PRECAUTIONS
 SCALE NONE

ALL DIMENSIONS IN INCHES
 FAN SIZE 60 & BELOW +/- 1/8"
 FAN SIZE ABOVE 60 +/- 1/4"

PURCHASER TO PROVIDE OPENINGS IN BUILDING OR STRUCTURE OF SUFFICIENT SIZE TO PERMIT ENTRANCE OF EQUIPMENT PARTS AS SHOWN ON THIS DRAWING. THIS DOCUMENT CONTAINS MATERIAL AND/OR INFORMATION WHICH IS THE PROPERTY OF CHICAGO BLOWER CORP AND SUPPLIED ONLY ON A CONFIDENTIAL BASIS. NO TRANSMITTAL OR DISCLOSURE SHALL BE MADE TO ANY PERSON, FIRM, OR CORP WITHOUT THE PRIOR WRITTEN APPROVAL OF CHICAGO BLOWER CORP.

QUANTITY OF FANS: 2