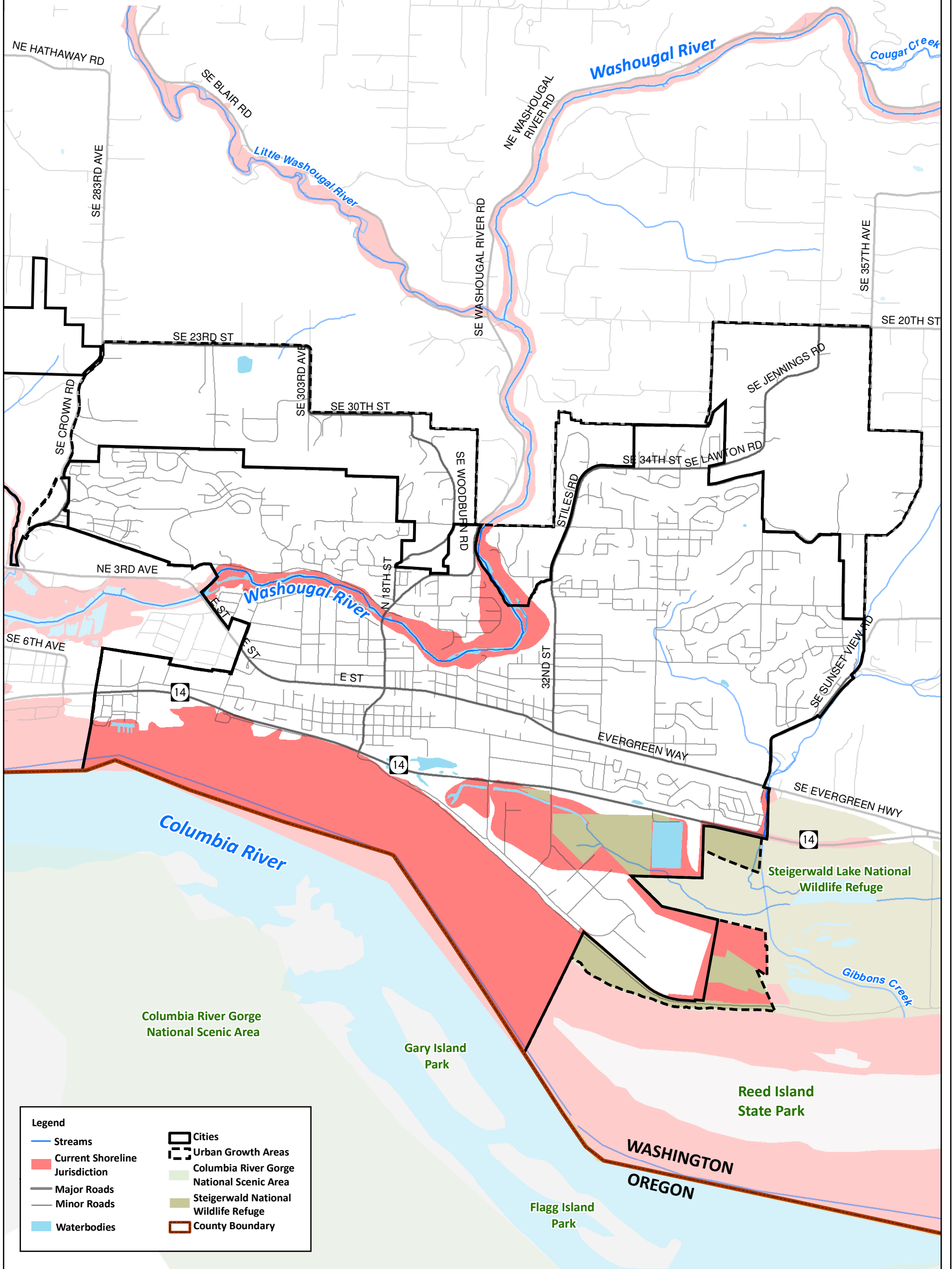


CLARK COUNTY COALITION SMP UPDATE

BATTLE GROUND | CAMAS | CLARK COUNTY | LA CENTER
 RIDGEFIELD | VANCOUVER | WASHOUGAL | YACOLT



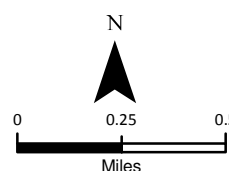
Legend

- Streams
- Current Shoreline Jurisdiction
- Major Roads
- Minor Roads
- Waterbodies
- Cities
- Urban Growth Areas
- Columbia River Gorge National Scenic Area
- Steigerwald National Wildlife Refuge
- County Boundary



SMA Grant Agreement No. G1000058
 Task 2.10
 Coordinate System: State Plane NAD1983 (ft)
 Washington South FIPS 4602

NOTE: Map data shown here are the property of the sources listed below. Inaccuracies may exist, and ESA Adolfson implies no warranties or guarantees regarding any aspect of data depiction.



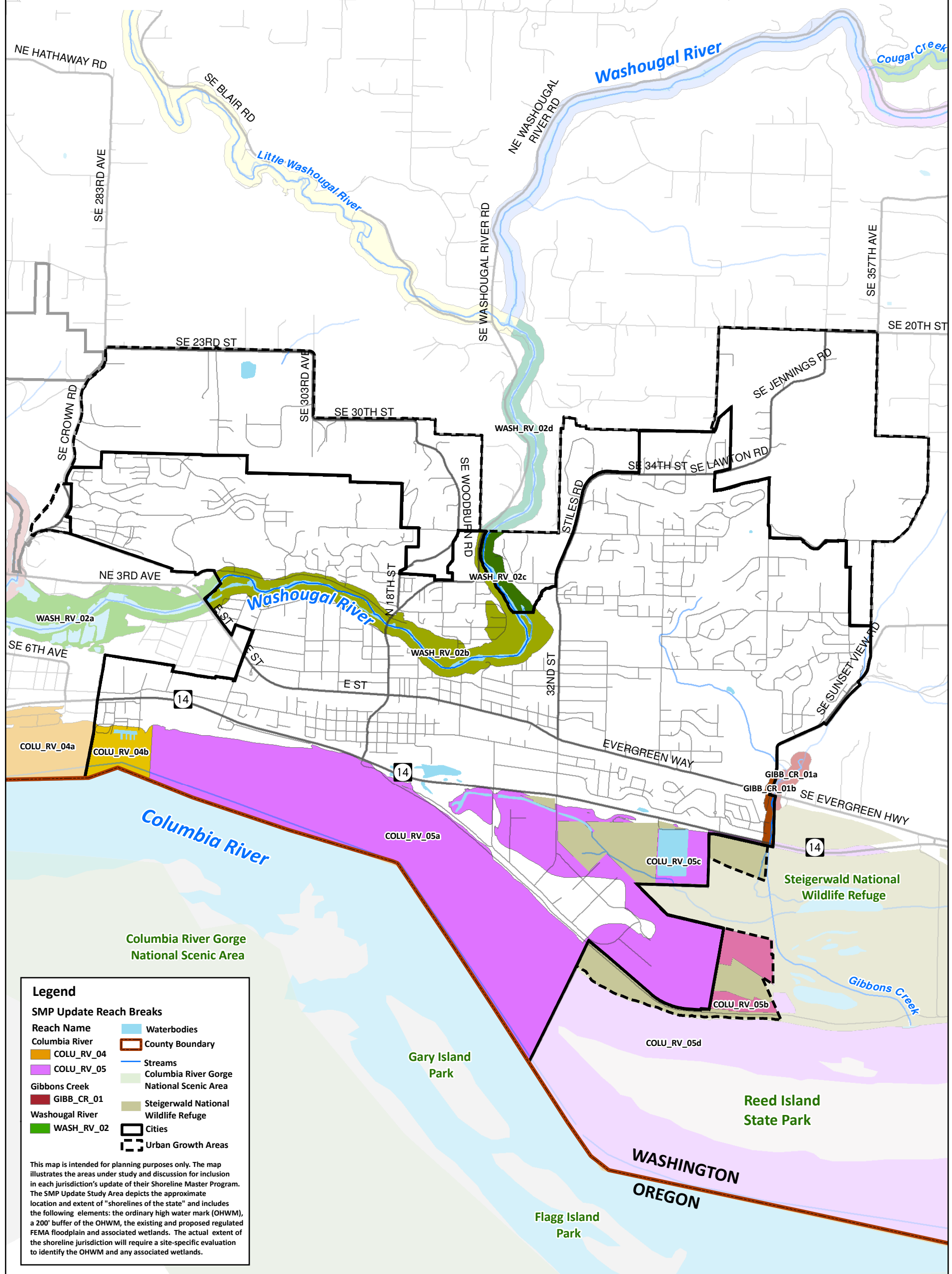
Map 1

City of Washougal - Current Shoreline Jurisdiction

Data Sources: Clark County, 2009;
 DNR, 2007

CLARK COUNTY COALITION SMP UPDATE

BATTLE GROUND | CAMAS | CLARK COUNTY | LA CENTER
 RIDGEFIELD | VANCOUVER | WASHOUGAL | YACOLT



Legend

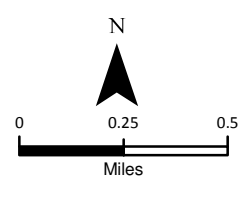
| SMP Update Reach Breaks | |
|-------------------------|---|
| Reach Name | Waterbodies |
| Columbia River | County Boundary |
| COLU_RV_04 | Streams |
| COLU_RV_05 | Columbia River Gorge National Scenic Area |
| Gibbons Creek | Steigerwald National Wildlife Refuge |
| GIBB_CR_01 | Cities |
| Washougal River | Urban Growth Areas |
| WASH_RV_02 | |

This map is intended for planning purposes only. The map illustrates the areas under study and discussion for inclusion in each jurisdiction's update of their Shoreline Master Program. The SMP Update Study Area depicts the approximate location and extent of "shorelines of the state" and includes the following elements: the ordinary high water mark (OHWM), a 200' buffer of the OHWM, the existing and proposed regulated FEMA floodplain and associated wetlands. The actual extent of the shoreline jurisdiction will require a site-specific evaluation to identify the OHWM and any associated wetlands.



SMA Grant Agreement No. G1000058
 Task 2.10
 Coordinate System: State Plane NAD1983 (ft)
 Washington South FIPS 4602

NOTE: Map data shown here are the property of the sources listed below. Inaccuracies may exist, and ESA Adolfson implies no warranties or guarantees regarding any aspect of data depiction.

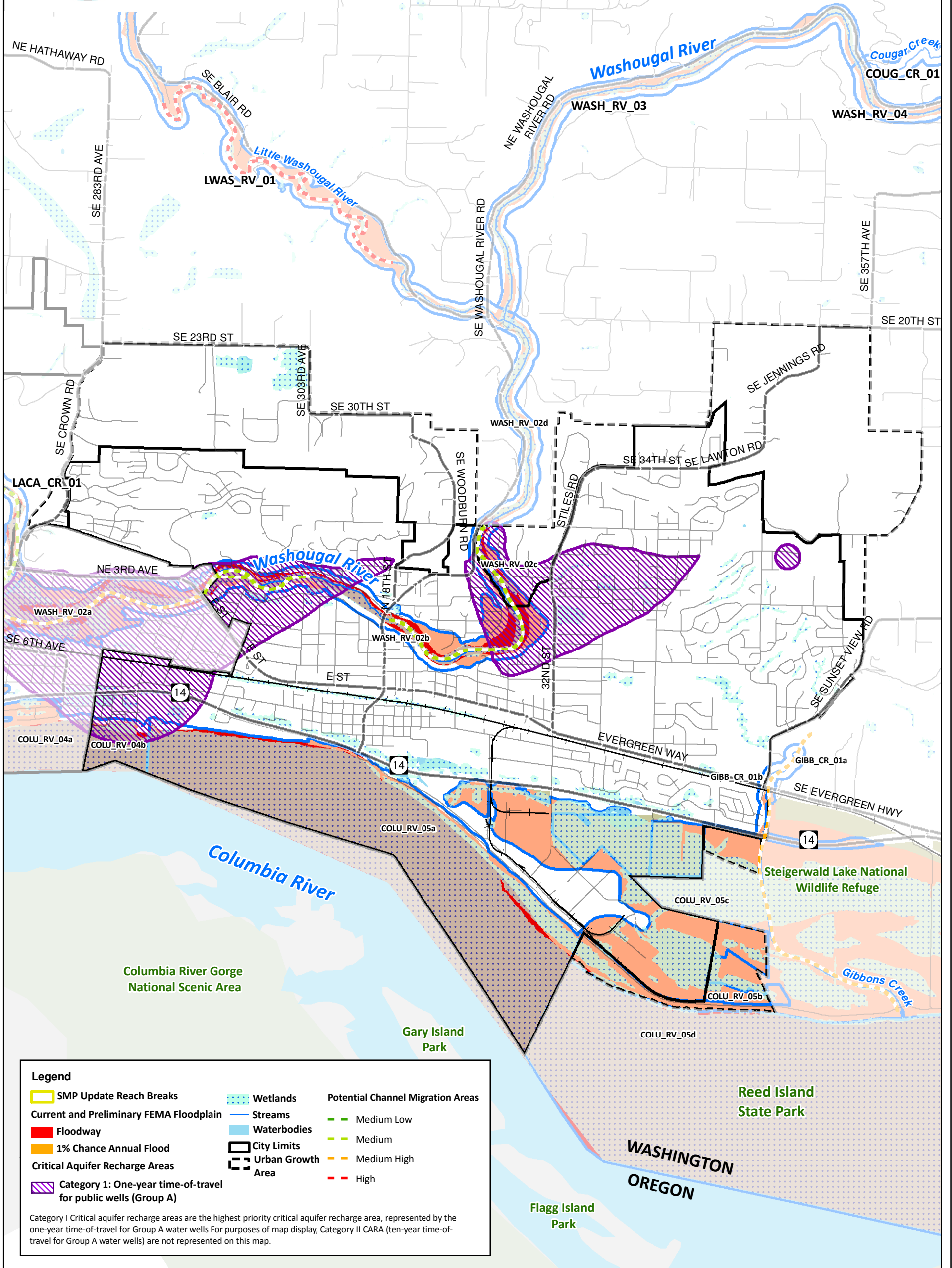


Map 2
 City of Washougal - Proposed SMP Study Areas

Data Sources: Clark County, 2009;
 DNR, 2007.

CLARK COUNTY COALITION SMP UPDATE

BATTLE GROUND | CAMAS | CLARK COUNTY | LA CENTER
 RIDGEFIELD | VANCOUVER | WASHOUGAL | YACOLT



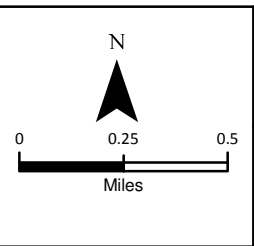
Legend

| | | |
|--|-------------------|-----------------------------------|
| SMP Update Reach Breaks | Wetlands | Potential Channel Migration Areas |
| Current and Preliminary FEMA Floodplain | Streams | Medium Low |
| Floodway | Waterbodies | Medium |
| 1% Chance Annual Flood | City Limits | Medium High |
| Critical Aquifer Recharge Areas | Urban Growth Area | High |
| Category 1: One-year time-of-travel for public wells (Group A) | | |

Category I Critical aquifer recharge areas are the highest priority critical aquifer recharge area, represented by the one-year time-of-travel for Group A water wells. For purposes of map display, Category II CARA (ten-year time-of-travel for Group A water wells) are not represented on this map.



SMA Grant Agreement No. G1000058
 Task 2.10
 Coordinate System: State Plane NAD1983 (ft)
 Washington South FIPS 4602
 NOTE: Map data shown here are the property of the sources listed below. Inaccuracies may exist, and ESA Adolfson implies no warranties or guarantees regarding any aspect of data depiction.

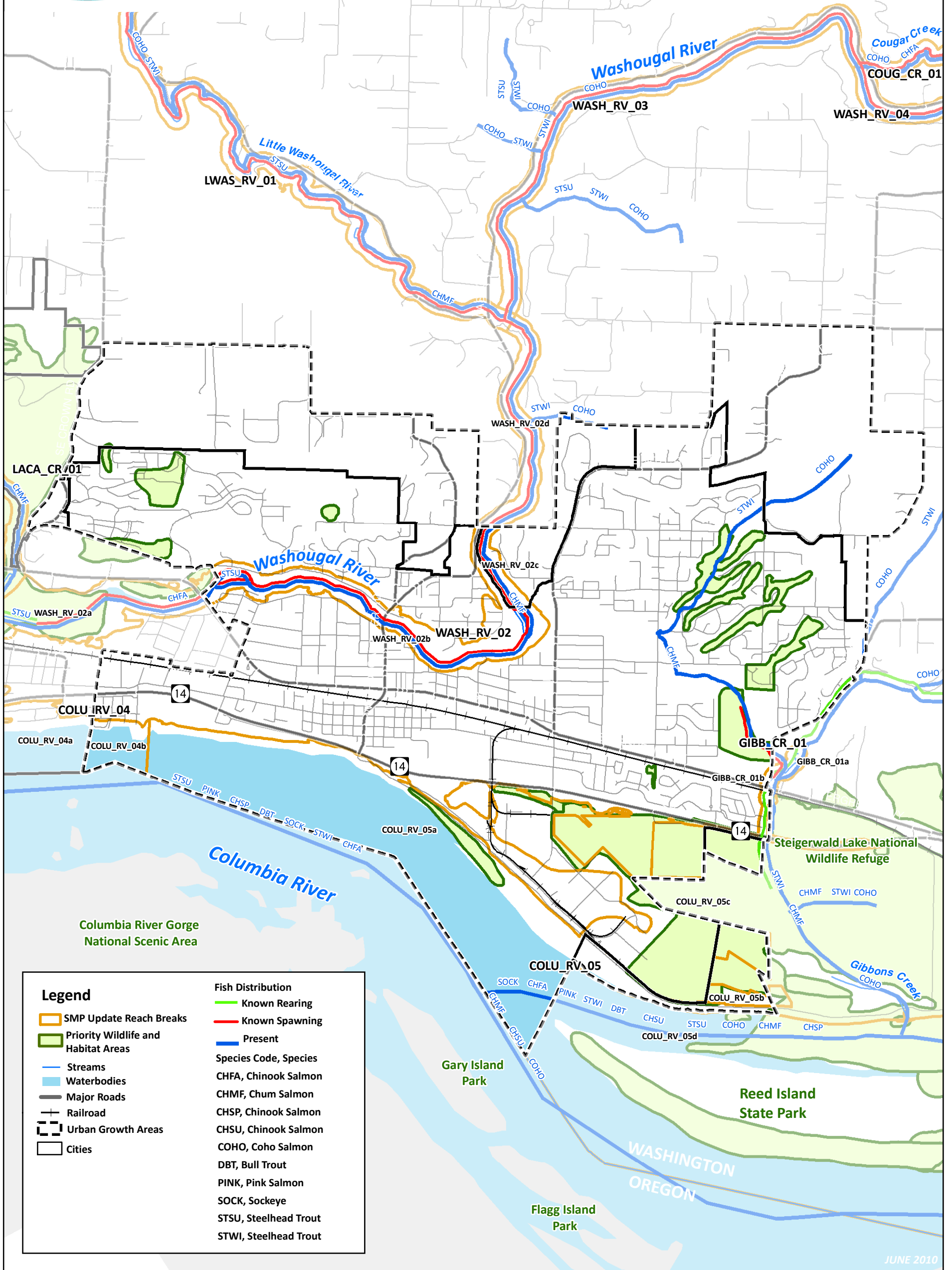


Map 4
 City of Washougal - Hydrology

Data Sources: Clark County, 2008; DNR, 2007; ESRI, 2008; Olson, 2010

CLARK COUNTY COALITION SMP UPDATE

BATTLE GROUND | CAMAS | CLARK COUNTY | LA CENTER
 RIDGEFIELD | VANCOUVER | WASHOUGAL | YACOLT



JUNE 2010

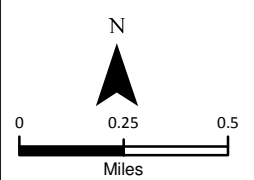
Legend

- SMP Update Reach Breaks
- Priority Wildlife and Habitat Areas
- Streams
- Waterbodies
- Major Roads
- Railroad
- Urban Growth Areas
- Cities

- Fish Distribution**
- Known Rearing
 - Known Spawning
 - Present
- Species Code, Species**
- CHFA, Chinook Salmon
 - CHMF, Chum Salmon
 - CHSP, Chinook Salmon
 - CHSU, Chinook Salmon
 - COHO, Coho Salmon
 - DBT, Bull Trout
 - PINK, Pink Salmon
 - SOCK, Sockeye
 - STSU, Steelhead Trout
 - STWI, Steelhead Trout



SMA Grant Agreement No. G1000058
 Task 2.10
 Coordinate System: State Plane NAD1983 (ft)
 Washington South FIPS 4602
 NOTE: Map data shown here are the property of the sources listed below. Inaccuracies may exist, and ESA Adolfson implies no warranties or guarantees regarding any aspect of data depiction.

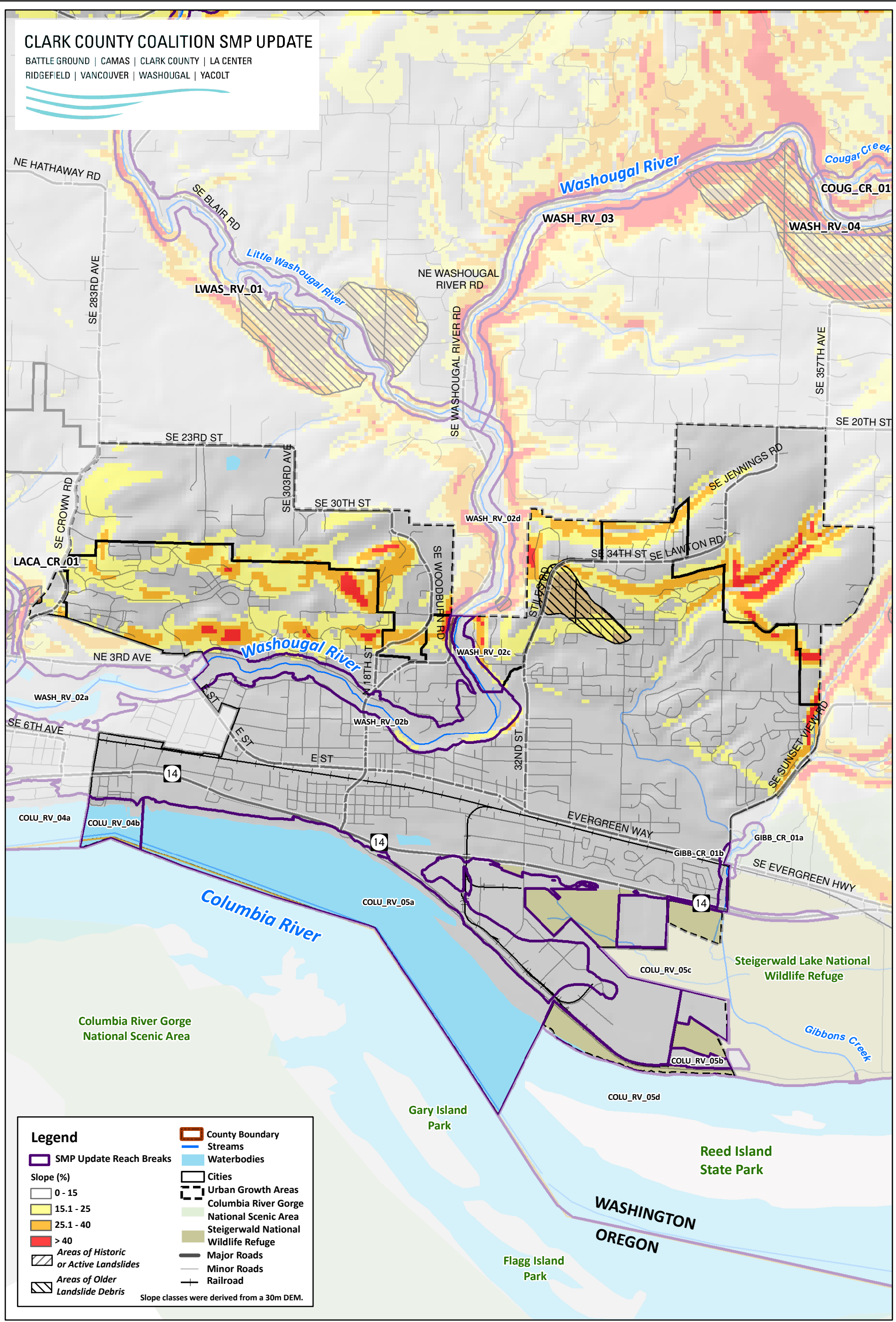


Map 5
 City of Washougal -
 Priority Wildlife and Habitat Areas

Data Sources: Clark County, 2009; DNR, 2007; WDFW, 2009

CLARK COUNTY COALITION SMP UPDATE

BATTLE GROUND | CAMAS | CLARK COUNTY | LA CENTER
 RIDGEFIELD | VANCOUVER | WASHOUGAL | YACOLT



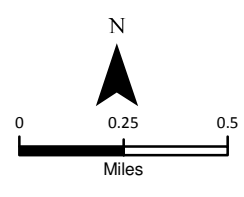
Legend

- SMP Update Reach Breaks
- County Boundary
- Streams
- Waterbodies
- Cities
- Urban Growth Areas
- Columbia River Gorge National Scenic Area
- Steigerwald National Wildlife Refuge
- Major Roads
- Minor Roads
- Railroad
- Slope (%) 0 - 15
- Slope (%) 15.1 - 25
- Slope (%) 25.1 - 40
- Slope (%) > 40
- Areas of Historic or Active Landslides
- Areas of Older Landslide Debris

Slope classes were derived from a 30m DEM.



SMA Grant Agreement No. G1000058
 Task 2.10
 Coordinate System: State Plane NAD1983 (ft)
 Washington South FIPS 4602
NOTE: Map data shown here are the property of the sources listed below. Inaccuracies may exist, and ESA Adolfson implies no warranties or guarantees regarding any aspect of data depiction.

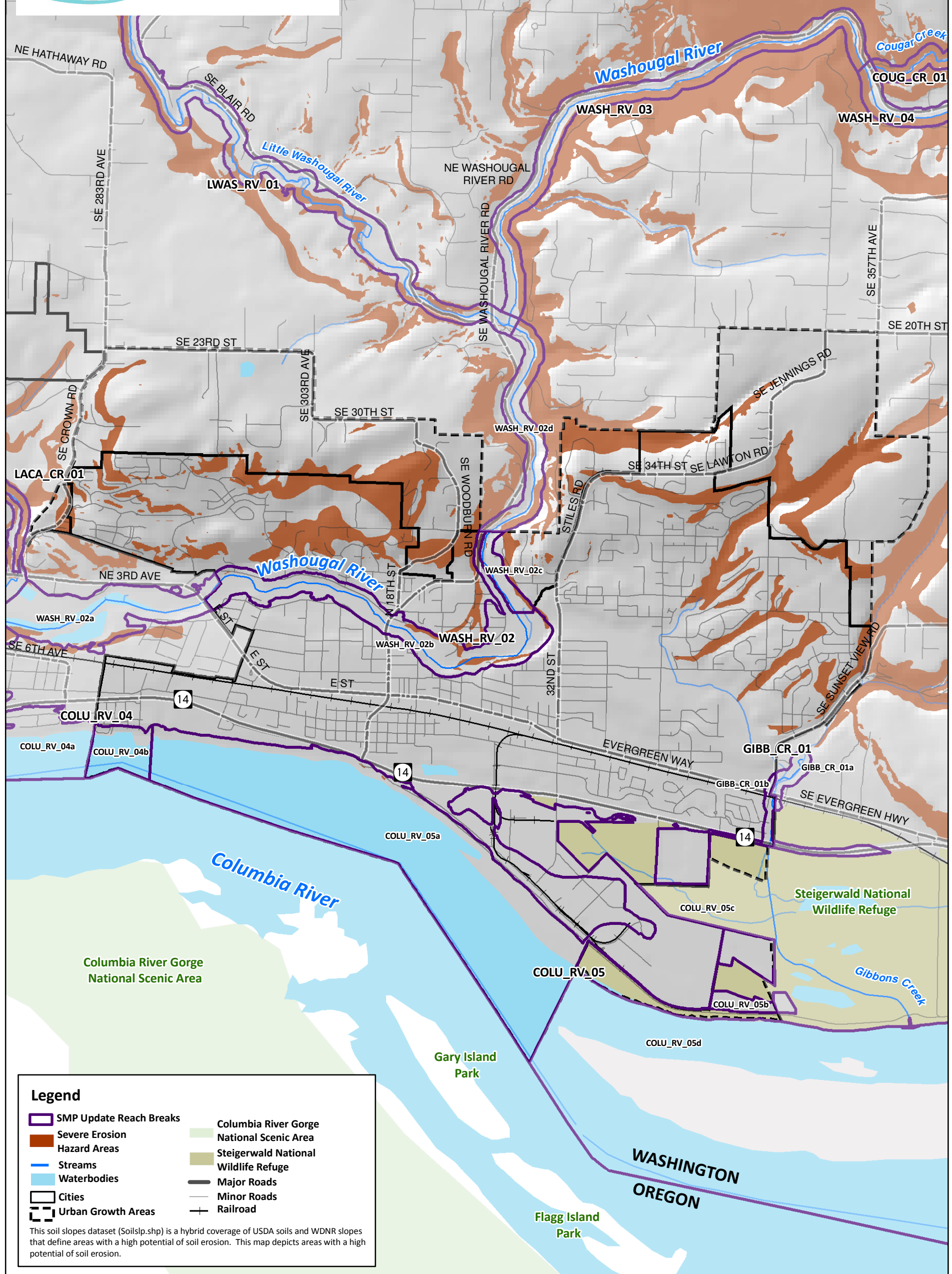


Map 6a
 City of Washougal - Landslide Hazard Areas

Data Sources: WDFW, 2009; Clark County, 2009; DNR, 2007; ESRI, 2008;

CLARK COUNTY COALITION SMP UPDATE

BATTLE GROUND | CAMAS | CLARK COUNTY | LA CENTER
 RIDGEFIELD | VANCOUVER | WASHOUGAL | YACOLT



Legend

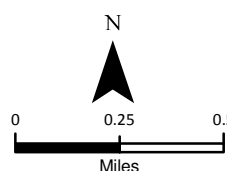
- SMP Update Reach Breaks
- Severe Erosion Hazard Areas
- Streams
- Waterbodies
- Cities
- Urban Growth Areas
- Columbia River Gorge National Scenic Area
- Steigerwald National Wildlife Refuge
- Major Roads
- Minor Roads
- Railroad

This soil slopes dataset (Soilslp.shp) is a hybrid coverage of USDA soils and WDNR slopes that define areas with a high potential of soil erosion. This map depicts areas with a high potential of soil erosion.



SMA Grant Agreement No. G1000058
 Task 2.10
 Coordinate System: State Plane NAD1983 (ft)
 Washington South FIPS 4602

NOTE: Map data shown here are the property of the sources listed below. Inaccuracies may exist, and ESA Adolfson implies no warranties or guarantees regarding any aspect of data depiction.

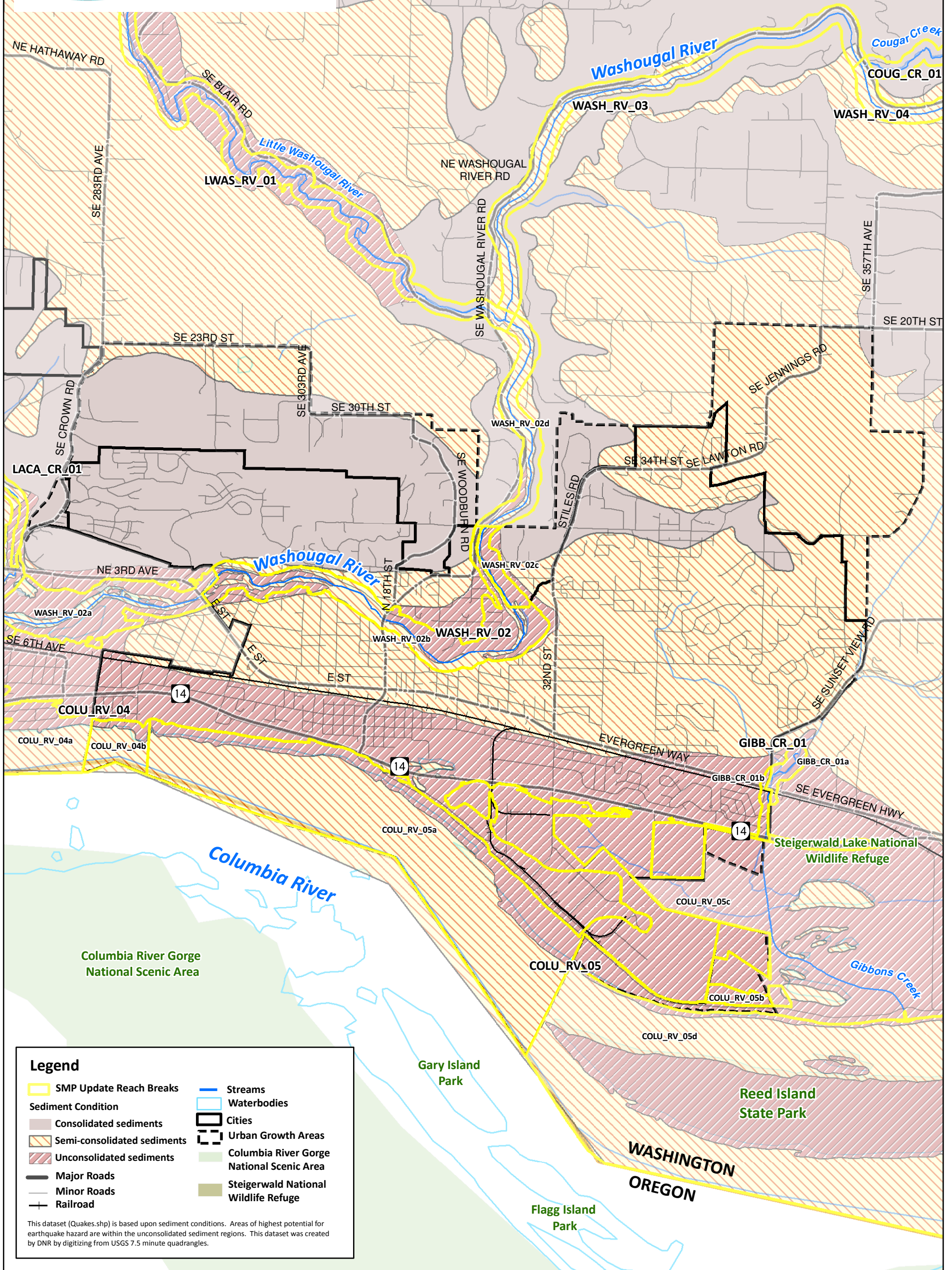


Map 6b
 City of Washougal - Erosion Hazard Areas

Data Sources: WDFW, 2009; Clark County, 2009; DNR, 2007; ESRI, 2008;

CLARK COUNTY COALITION SMP UPDATE

BATTLE GROUND | CAMAS | CLARK COUNTY | LA CENTER
 RIDGEFIELD | VANCOUVER | WASHOUGAL | YACOLT



Legend

- | | |
|-----------------------------|---|
| SMP Update Reach Breaks | Streams |
| Sediment Condition | Waterbodies |
| Consolidated sediments | Cities |
| Semi-consolidated sediments | Urban Growth Areas |
| Unconsolidated sediments | Columbia River Gorge National Scenic Area |
| Major Roads | Steigerwald National Wildlife Refuge |
| Minor Roads | |
| Railroad | |

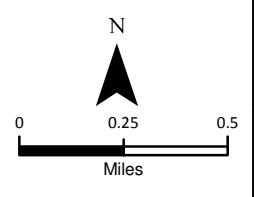
This dataset (Quakes.shp) is based upon sediment conditions. Areas of highest potential for earthquake hazard are within the unconsolidated sediment regions. This dataset was created by DNR by digitizing from USGS 7.5 minute quadrangles.



SMA Grant Agreement No. G1000058
 Task 2.10

Coordinate System: State Plane NAD1983 (ft)
 Washington South FIPS 4602

NOTE: Map data shown here are the property of the sources listed below. Inaccuracies may exist, and ESA Adolphson implies no warranties or guarantees regarding any aspect of data depiction.



Map 6c City of Washougal - Sediment Condition

Data Sources: Clark County, 2009;
 DNR, 2007; ESRI, 2008; DNR -
 Division of Geology and Earth Sciences, 1993, 2000