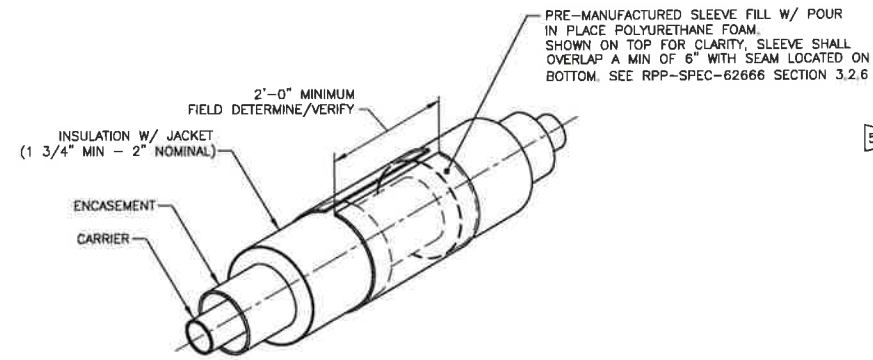
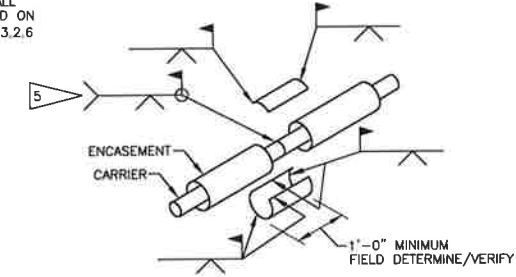


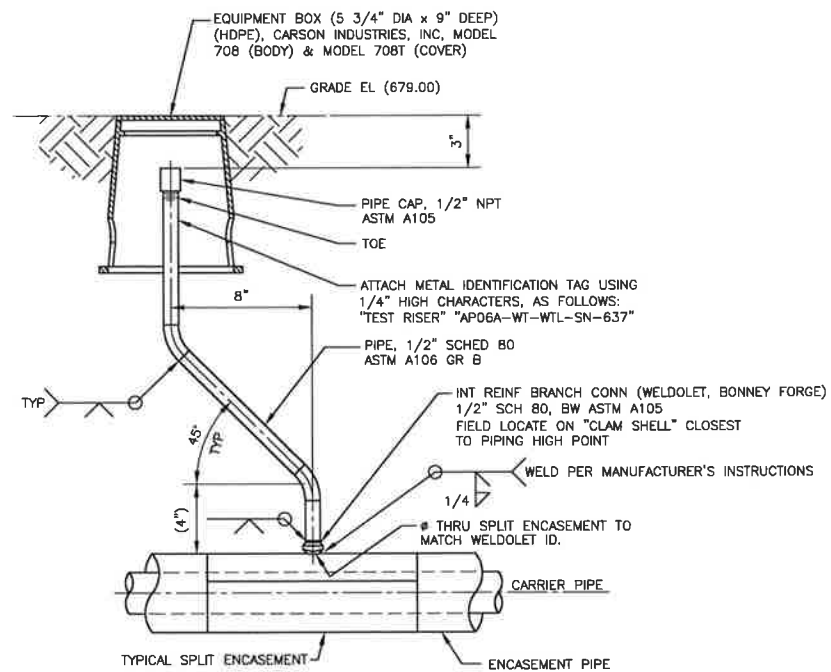
TYPICAL CROSS SECTION FOR STRAIGHT RUNS OF PIPE  
**TYPICAL INSULATION DETAIL**  
 SCALE: NONE  
 SEE NOTE 3



PRE-MANUFACTURED SLEEVE FILL W/ POUR IN PLACE POLYURETHANE FOAM. SHOWN ON TOP FOR CLARITY, SLEEVE SHALL OVERLAP A MIN OF 6" WITH SEAM LOCATED ON BOTTOM. SEE RPP-SPEC-62666 SECTION 3.2.6  
 2'-0" MINIMUM FIELD DETERMINE/VERIFY  
 INSULATION W/ JACKET (1 3/4" MIN - 2" NOMINAL)  
 ENCASEMENT  
 CARRIER  
**TYPICAL INSULATION FIELD JOINT**  
 SEE NOTE 2



1'-0" MINIMUM FIELD DETERMINE/VERIFY  
**TYPICAL SPLIT ENCASEMENT**



EQUIPMENT BOX (5 3/4" DIA x 9" DEEP) (HDPE), CARSON INDUSTRIES, INC. MODEL 708 (BODY) & MODEL 708T (COVER)  
 GRADE EL. (679.00)  
 PIPE CAP, 1/2" NPT ASTM A105  
 TOE  
 ATTACH METAL IDENTIFICATION TAG USING 1/4" HIGH CHARACTERS, AS FOLLOWS: "TEST RISER" "APDGA-WT-WTL-SN-637"  
 PIPE, 1/2" SCHED 80 ASTM A106 GR B  
 INT REINF BRANCH CONN (Weldolet, BONNEY FORGE) 1/2" SCH 80, BW ASTM A105  
 FIELD LOCATE ON "CLAM SHELL" CLOSEST TO PIPING HIGH POINT  
 WELD PER MANUFACTURER'S INSTRUCTIONS  
 THRU SPLIT ENCASEMENT TO MATCH WELDOLET ID.  
 CARRIER PIPE  
 ENCASEMENT PIPE  
 TYPICAL SPLIT ENCASEMENT  
 TEST PORT SYMBOL  
**6 DETAIL-TEST PORT**  
 H-14-111321 SCALE: 3"=1'-0"  
 H-14-111322



9/2/19

FOR GENERAL NOTES SEE SHEET 1.

**DATE:**  
 Aug 20, 2019  
 HANFORD RELEASE

DWG NUMBER	TITLE	REFERENCES
H-14-111376	AP FARM UPGRADES DRAWING LIST	
	DRAWING TRACEABILITY LIST	
	NEXT USED ON SHEET 1	

REV	DESCRIPTION	REVISIONS
0	RELEASED PER EDT-882029	

BLDG NO. 241-AP	NAME S. J. LANGUREUX W. T. ARNOT	U.S. DEPARTMENT OF ENERGY Office of River Protection
PROJ NO. 8511	SCALE SHOWN	PIPING DETAILS AP FARM YARD PIPING
		SHEET NO. 2 OF 00
		H-14-111373