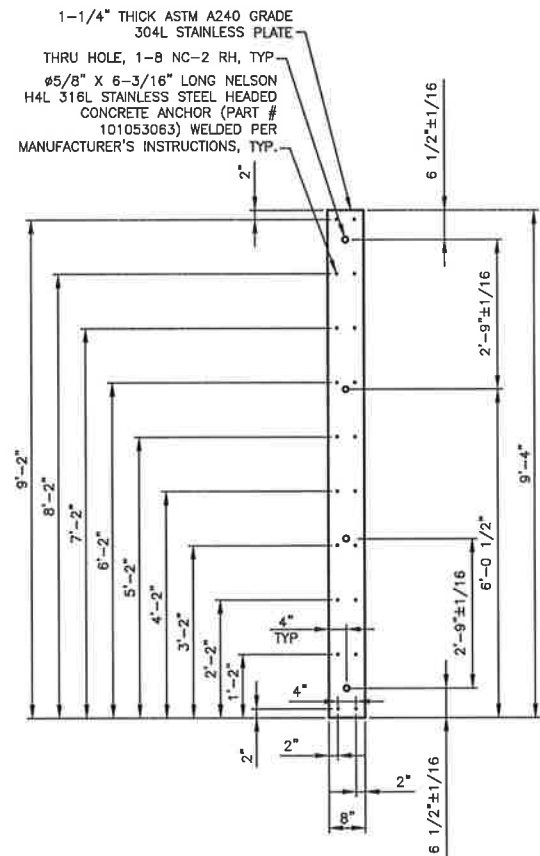
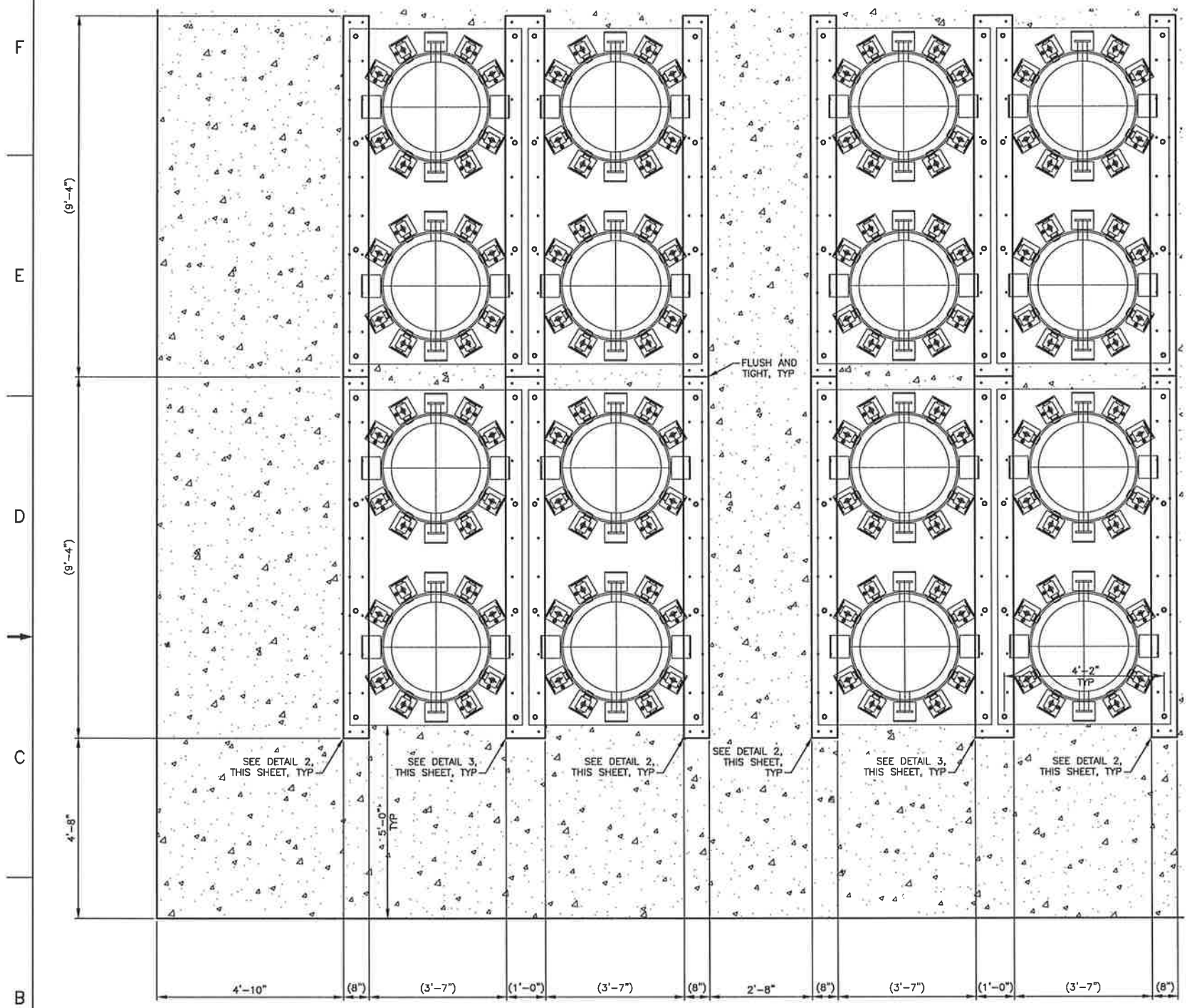
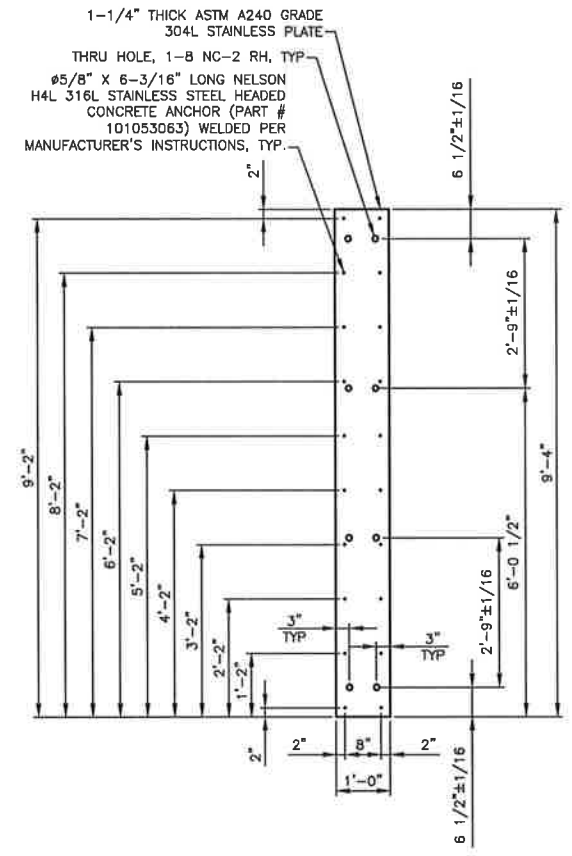


- NOTES:**
- SEE H-14-111603-1 FOR ABBREVIATIONS, LEGEND & GENERAL NOTES.
  - UTILIZE JIG/TEMPLATE FOR/DURING CONSTRUCTION TO ENSURE PROPER ALIGNMENT OF EMBED PLATES. ALL DIMENSIONS  $\pm 1/8"$  UNLESS OTHERWISE SPECIFIED. ADDITIONAL THREADED HOLES MAY BE INCLUDED IN THE EMBEDMENT PLATES TO FACILITATE CONSTRUCTION. FILL HOLES WITH WELD FILLER METAL FLUSH WITH TOP OF PLATE  $\pm 1/8"$ . WELD FILLER METAL MUST BE COMPATIBLE WITH STAINLESS STEEL PLATE. CARBON STEEL SUPPORT STRUCTURES MAY BE UTILIZED FOR SUPPORTING EMBEDMENT PLATES DURING CONSTRUCTION. USE OF MUD MATS MAY ALSO BE USED BELOW PAD TO FACILITATE CONSTRUCTION.



2 8-INCH EMBEDMENT PLATE  
SCALE: 3/4"=1'-0"



3 12-INCH EMBEDMENT PLATE  
SCALE: 3/4"=1'-0"

1 EMBEDMENT PLATE LAYOUT  
H-14-111604 SCALE: 3/4"=1'-0"  
H-14-111606



FOR PERMITTING  
on 9/26/19

DWG NUMBER	TITLE	REFERENCES	REVISIONS
RPP-SPEC-62663	CONSTRUCTION SPECIFICATION		
H-14-111602	DRAWING LIST & TITLE SHEET		
REF NUMBER	TITLE	DESCRIPTION	DATE

DWG NO 241-AP 255-AP POR-655 POR-656 POR-657 POR-668	NAME F. P. CULBERTSON D. R. CHAPMAN	U.S. DEPARTMENT OF ENERGY Office of River Protection TSCR IXC STORAGE AREA CIVIL SECTIONS & DETAILS
DWG NUMBER F SCALE SHOWN	H-14-111609	SHEET NO 1 OF 00