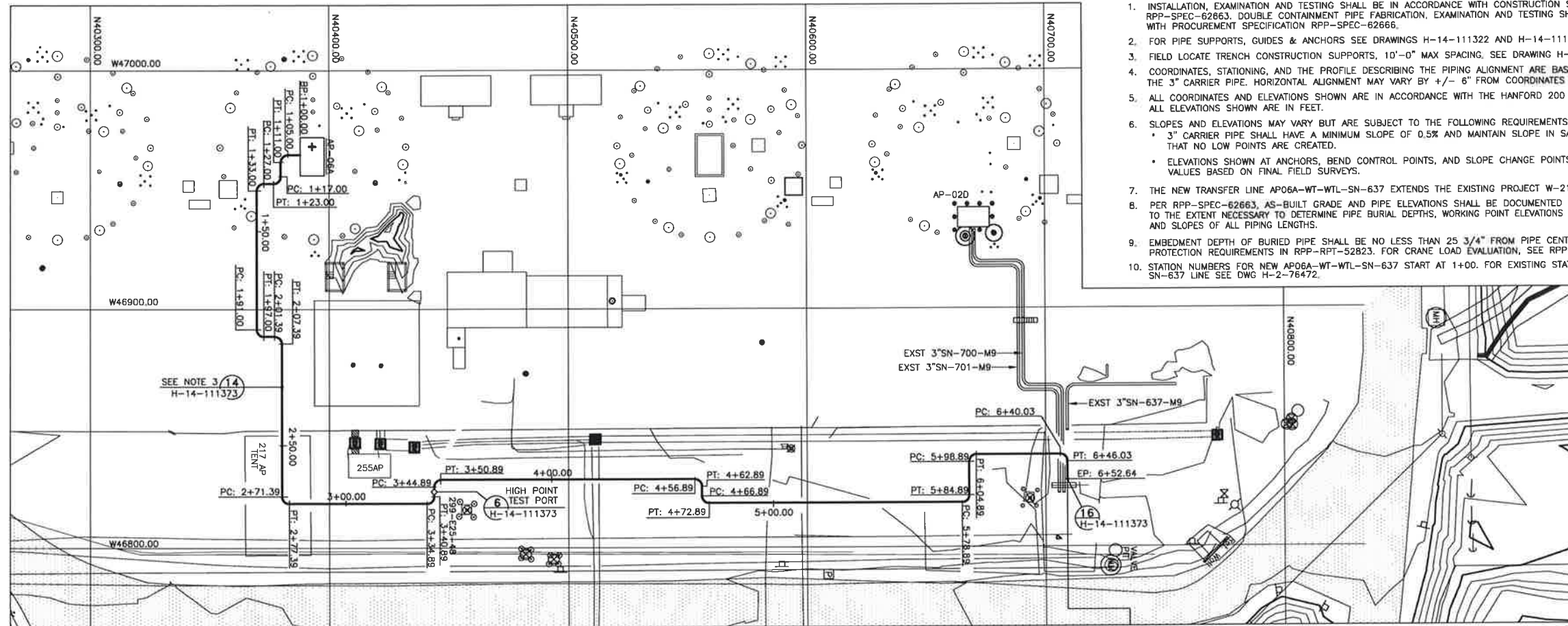


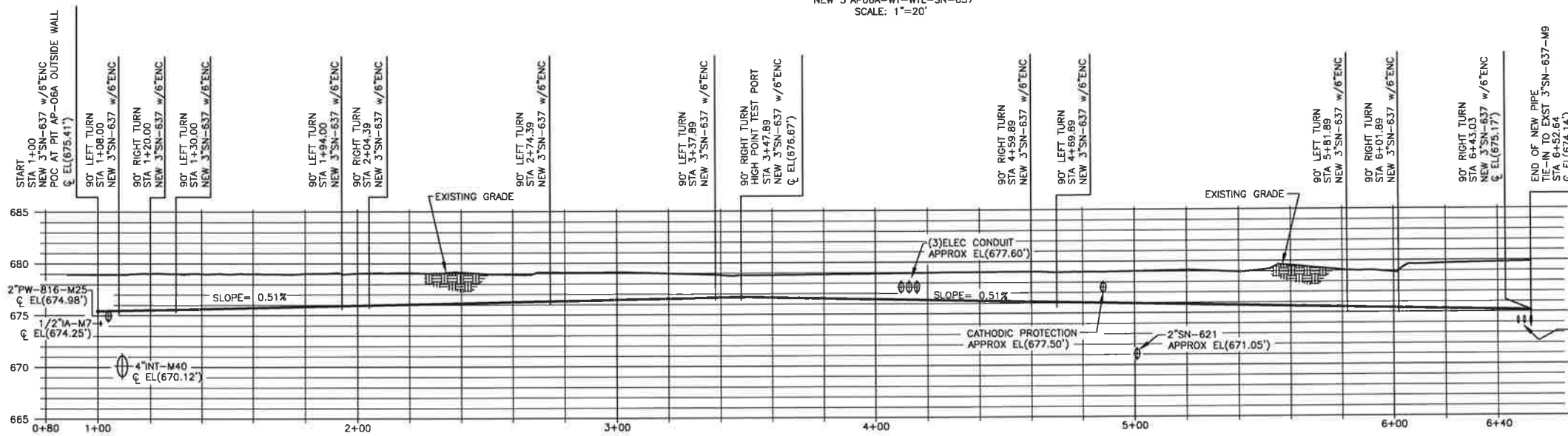


GENERAL NOTES: (UNLESS OTHERWISE SPECIFIED)

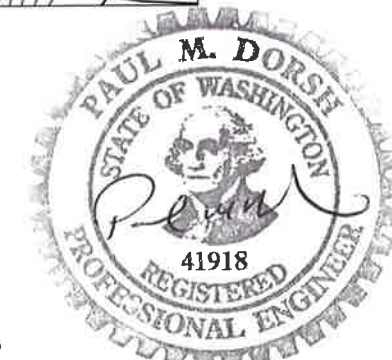
1. INSTALLATION, EXAMINATION AND TESTING SHALL BE IN ACCORDANCE WITH CONSTRUCTION SPECIFICATION RPP-SPEC-62663, DOUBLE CONTAINMENT PIPE FABRICATION, EXAMINATION AND TESTING SHALL BE IN ACCORDANCE WITH PROCEDURE SPECIFICATION RPP-SPEC-62666.
2. FOR PIPE SUPPORTS, GUIDES & ANCHORS SEE DRAWINGS H-14-111322 AND H-14-111373.
3. FIELD LOCATE TRENCH CONSTRUCTION SUPPORTS, 10'-0" MAX SPACING, SEE DRAWING H-111373.
4. COORDINATES, STATIONING, AND THE PROFILE DESCRIBING THE PIPING ALIGNMENT ARE BASED ON THE CENTERLINE OF THE 3" CARRIER PIPE. HORIZONTAL ALIGNMENT MAY VARY BY +/- 6" FROM COORDINATES SHOWN.
5. ALL COORDINATES AND ELEVATIONS SHOWN ARE IN ACCORDANCE WITH THE HANFORD 200 EAST COORDINATE SYSTEM. ALL ELEVATIONS SHOWN ARE IN FEET.
6. SLOPES AND ELEVATIONS MAY VARY BUT ARE SUBJECT TO THE FOLLOWING REQUIREMENTS:
  - \* 3" CARRIER PIPE SHALL HAVE A MINIMUM SLOPE OF 0.5% AND MAINTAIN SLOPE IN SAME DIRECTION SUCH THAT NO LOW POINTS ARE CREATED.
  - \* ELEVATIONS SHOWN AT ANCHORS, BEND CONTROL POINTS, AND SLOPE CHANGE POINTS SHALL BE AS-BUILT VALUES BASED ON FINAL FIELD SURVEYS.
7. THE NEW TRANSFER LINE AP06A-WT-WTL-SN-637 EXTENDS THE EXISTING PROJECT W-211 LINE SN-637 TO AP06A.
8. PER RPP-SPEC-62663, AS-BUILT GRADE AND PIPE ELEVATIONS SHALL BE DOCUMENTED BASED ON FINAL SURVEYS TO THE EXTENT NECESSARY TO DETERMINE PIPE BURIAL DEPTHS, WORKING POINT ELEVATIONS OF ALL ELBOWS, AND SLOPES OF ALL PIPING LENGTHS.
9. EMBEDMENT DEPTH OF BURIED PIPE SHALL BE NO LESS THAN 25 3/4" FROM PIPE CENTERLINE TO MEET FREEZE PROTECTION REQUIREMENTS IN RPP-RPT-52823. FOR CRANE LOAD EVALUATION, SEE RPP-CALC-62528.
10. STATION NUMBERS FOR NEW AP06A-WT-WTL-SN-637 START AT 1+00. FOR EXISTING STATION NUMBERS ON EXISTING SN-637 LINE SEE DWG H-2-76472.



PLAN  
NEW 3"AP06A-WT-WTL-SN-637  
SCALE: 1"=20'



PROFILE  
NEW 3"AP06A-WT-WTL-SN-637  
SCALE - HORIZONTAL: 1"=20'  
VERTICAL: 1"=5'



DATE: Jul 24, 2019  
HANFORD RELEASE

DWG NUMBER	TITLE	REFERENCES
H-14-111376	AP FARM UPGRADES DRAWING LIST	
		0 RELEASED PER EDT-882037

241-AP	NAME: LAMOUREUX, W. T. ARNDT	U.S. DEPARTMENT OF ENERGY Office of River Protection
0402	DESIGNED BY: J. P. WITHERSPOON	LAW FEED UPGRADES CIVIL PLAN AND PROFILE
		DATE: 7/24/2019
		SCALE: AS SHOWN