

**INTEGRATED DISPOSAL FACILITY
ADDENDUM E
SECURITY**

CHANGE CONTROL LOG

Change Control Logs ensure that changes to this unit are performed in a methodical, controlled, coordinated, and transparent manner. Each unit addendum will have its own change control log with a modification history table. The “**Modification Number**” represents Ecology’s method for tracking the different versions of the permit. This log will serve as an up to date record of modifications and version history of the unit.

Modification History Table

Modification Date	Modification Number

This page intentionally left blank.

DRAFT

1
2
3
4
5
6

**INTEGRATED DISPOSAL FACILITY
ADDENDUM E
SECURITY**

DRAFT

1
2
3
4
5

This page intentionally left blank.

DRAFT

**ADDENDUM E
SECURITY**

1
2
3
4
5
6
7
8
9
10
11
12
13
14
15
16

TABLE OF CONTENTS

E.1 Introduction 5
E.2 Security Provisions 5
E.2.1 Access Control 5
E.2.2 Warning Signs 5
E.3 References 9

FIGURES

Figure E-1 Integrated Disposal Facility Warning Signs 7

DRAFT

1
2
3
4
5

This page intentionally left blank.

DRAFT

1 **E.1 INTRODUCTION**

2 This addendum addresses security measures in effect at the Integrated Disposal Facility (IDF) dangerous
3 waste management units (DWMUs) that comprise Operating Unit Group 11 of WA7890008967, Hanford
4 Facility Resource Conservation and Recovery Act Permit [of 1976](#). This security plan applies to all
5 DWMUs defined in Addendum A, “Part A Form,” and is in effect through final closure.

6 **E.2 SECURITY PROVISIONS**

7 IDF, located within the 200 East Area of the Hanford Facility, complies with access control and warning
8 sign requirements pursuant to Washington Administrative Code (WAC) 173-303-310(1) and (2),
9 Dangerous Waste Regulations, *Security*. The active portions of the IDF include the following four
10 DWMUs:

- 11 • Storage pad for container storage.
- 12 • Treatment pad for container storage and other treatment.
- 13 • Two disposal cells for landfill disposal.

14 Security measures are used to control access to the active portions of the Hanford Facility in accordance
15 with Hanford Facility Permit Condition II.M, *Security*. The entire Hanford Facility is a controlled access
16 area as described in Permit Attachment 3, *Security*. The security measures in Permit Attachment 3 and the
17 unit-specific security measures in this addendum prevent the unknowing entry, and minimize the
18 possibility for the unauthorized entry, of persons or livestock. [WAC 173-303-310(1)]

19 **E.2.1 Access Control**

20 Unknowing entry and the possibility for unauthorized entry of persons or livestock onto the active
21 DWMUs of IDF are minimized through implementation and maintenance of the following security
22 measures.

- 23 • Authorization clearance for all entrants to the IDF is required. Clearance to enter is ultimately
24 confirmed by facility personnel.
- 25 • Roadway access is controlled by a perimeter fence (nominally 1.8 m [6 ft] high chain link)
26 surrounding the IDF boundary and locked swinging metal gates at the IDF entrances. During
27 non-operational hours and periods of nonactivity or layup, the gates will remain locked. The gate
28 keys are controlled and may only be accessed by authorized personnel.

29 Visitors to IDF must adhere to all personal protection requirements and are subject to escorting protocols.
30 Personnel training requirements for IDF operators and workers are found in Addendum G,
31 “Personnel Training.”

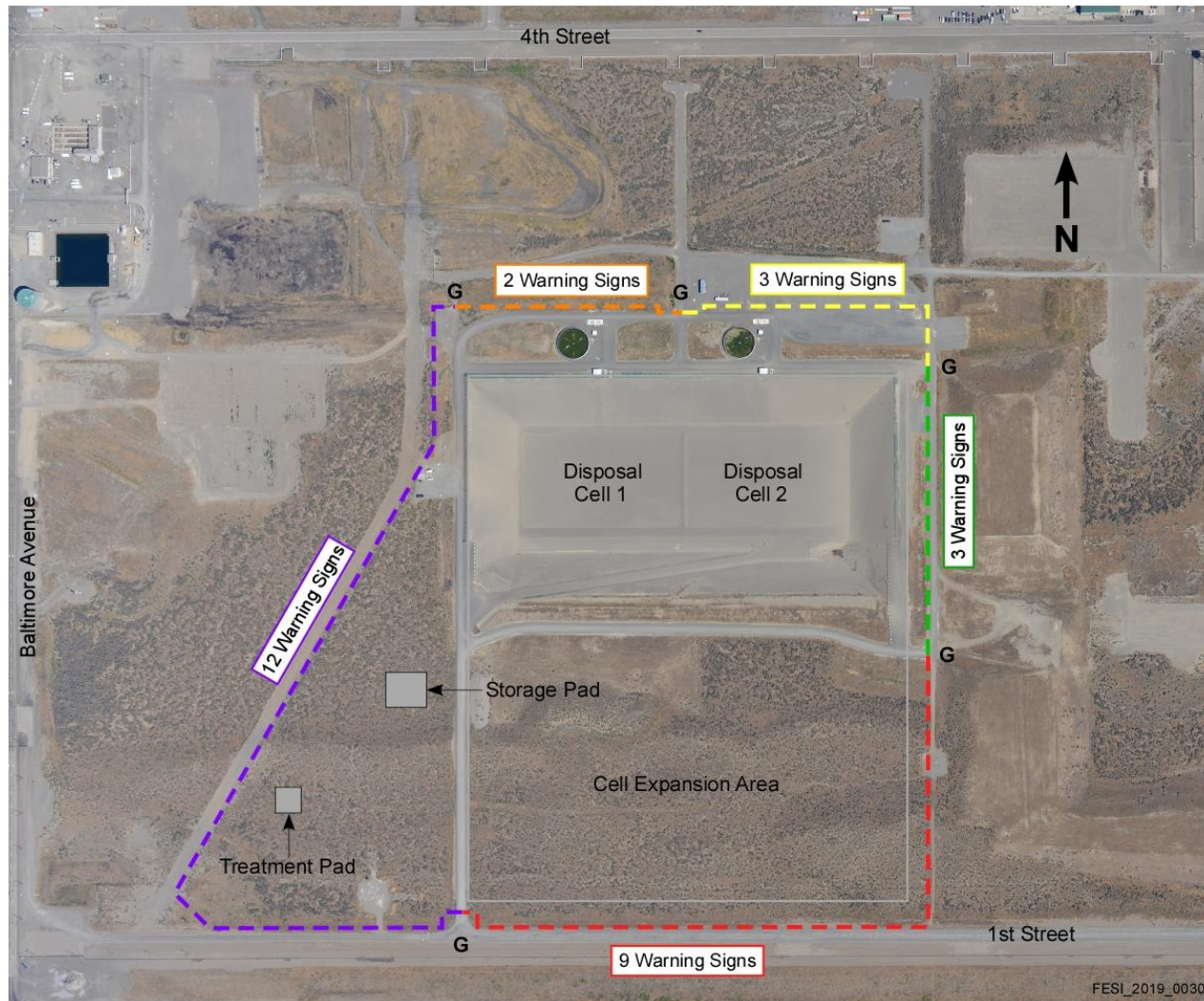
32 **E.2.2 Warning Signs**

33 Warning signs stating “Danger-Unauthorized Personnel Keep Out” are posted at each gate entrance to the
34 IDF. Signs identical to those affixed at IDF gate entrances are posted along the fence lines at distances not
35 to exceed 76.2 m (250 ft) between signs. Figure E-1 identifies the minimum number of signs posted along
36 each segment of fence. Permittees must maintain warning signs and ensure that signs are written in
37 English, legible from a distance of approximately 7.6 m (25 ft) or more, and visible from all angles of
38 approach [WAC 173-303-310(2)(a)].

1
2
3
4
5

This page intentionally left blank.

DRAFT



Note: minimum number of signs required per boundary segment at distances not to exceed 76.2 m (250 ft) between signs.

Legend	
G	External Gate
- - -	External Fence Line (colors vary)

Figure E-1 Integrated Disposal Facility Warning Signs

1
2
3
4
5

This page intentionally left blank.

DRAFT

1 **E.3 REFERENCES**

- 2 WAC 173-303-310, Dangerous Waste Regulations, *Security*, Washington Administrative Code, Olympia,
3 Washington. Available at: <https://apps.leg.wa.gov/WAC/default.aspx?cite=173-303-310>.

DRAFT

1
2
3
4
5

This page intentionally left blank.

DRAFT