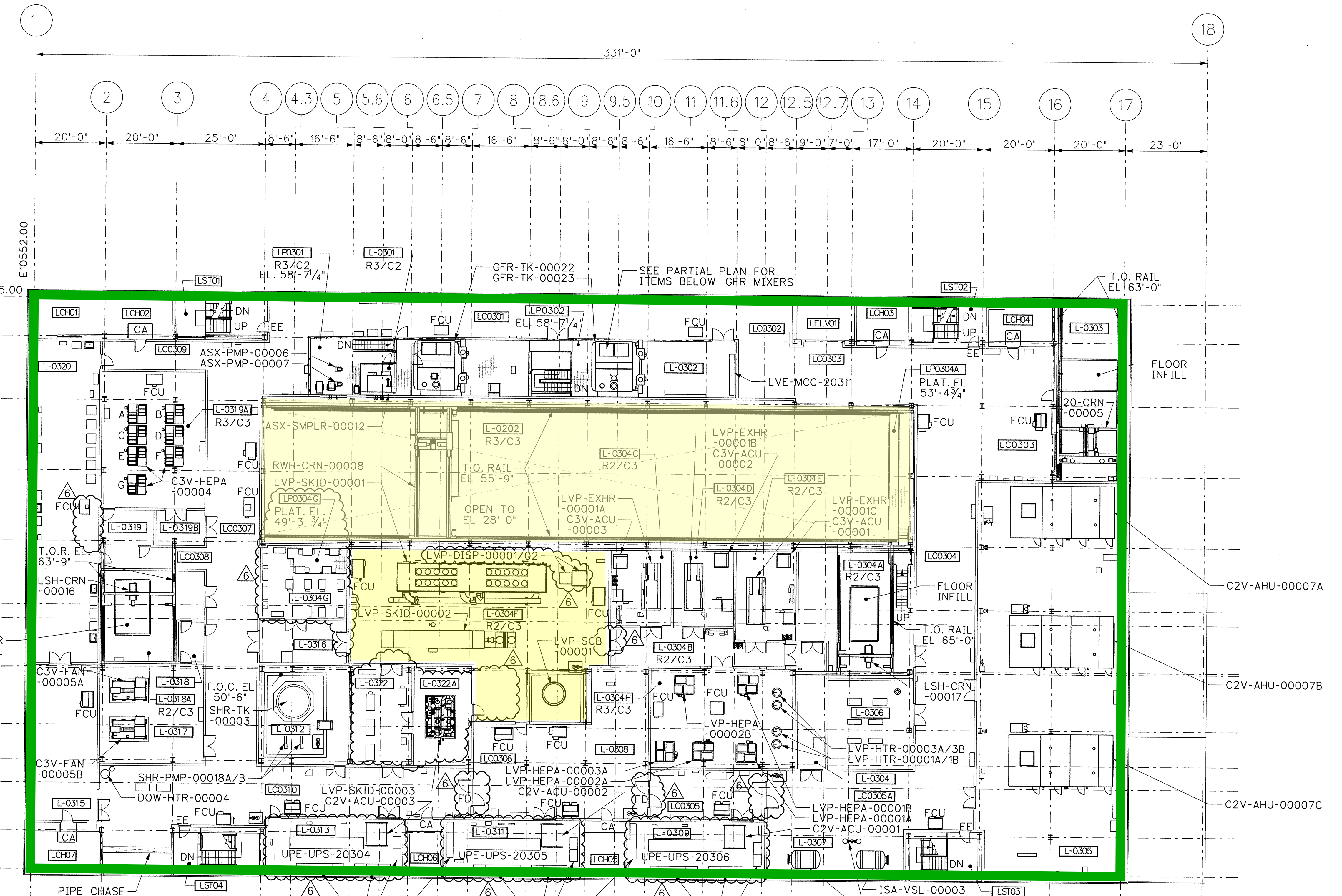


KEY PLAN

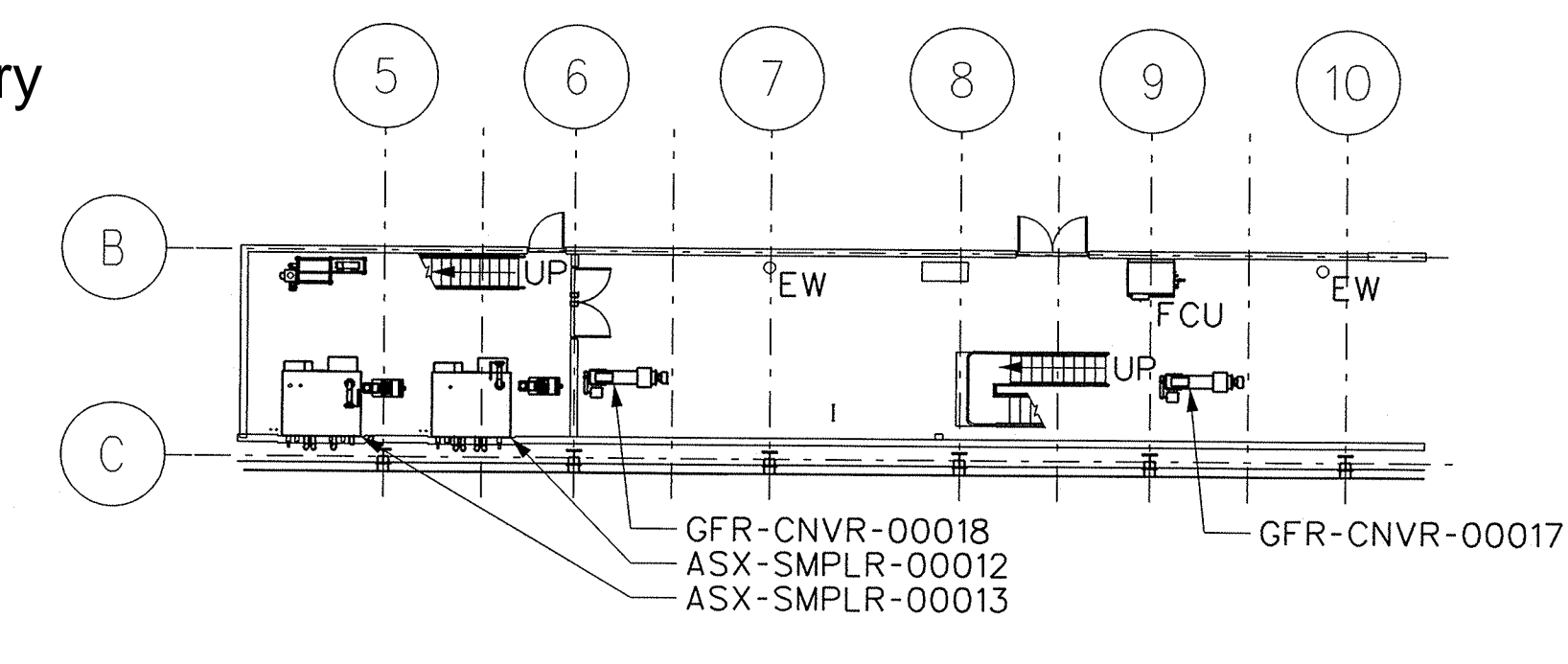
- NOTES:
- FOR GENERAL NOTES, SEE 24590-LAW-P1-P01T-00001.
 - CONTENTS OF THIS DOCUMENT ARE DANGEROUS WASTE PERMIT AFFECTING.
 - SEE NOTE 3 ON REV 4 OF THIS DRAWING FOR REV 4 HISTORY.
 - THE RADIATION/CONTAMINATION CLASSIFICATIONS DEPICTED ON THE DRAWING ARE FOR DESIGN PURPOSES ONLY AND DO NOT NECESSARILY INDICATE THE ACTUAL RADIOLOGICAL CLASSIFICATION DURING RADIOACTIVE OPERATIONS.
 - ROOMS ARE OFFICIALLY IDENTIFIED BY ROOM NUMBERS ONLY. ROOM NUMBERS ARE ESTABLISHED AND CONTROLLED ON GENERAL ARRANGEMENT DRAWINGS. ONLY ROOM NUMBERS ARE NEEDED TO IDENTIFY ROOMS ON ENGINEERING DISCIPLINE DOCUMENTS. WHILE ROOM NUMBERS ARE CONTROLLED, THE MOST COMMON NAME OF ROOMS ASSOCIATED WITH EACH ROOM NUMBER ARE SHOWN FOR REFERENCE ONLY ON ARCHITECTURAL FLOOR PLANS.
 - SEE NOTE 6 ON REV 5 OF THIS DRAWING FOR REV 5 HISTORY.
 - REVISED TO INCORPORATE THE FOLLOWING:
 - 24590-LAW-PIN-P01T-00070: REVISED FCU IN L-0320.
 - 24590-LAW-PIN-P01T-00073: REVISED C2V-ACU-00001/02/03.
 - 24590-LAW-PIN-P01T-00075: REMOVED HOLD 19 FROM LVP-EXHR-00001A/B/C.
 - 24590-LAW-PIN-P01T-00076: PARTITIONED L-0322 TO ADD L-0322A.
 - 24590-LAW-PIN-P01T-00077: ADDED LVP-DISP-00001/02.
 - 24590-LAW-PIN-P01T-00079: REVISED UPE EQUIPMENT.
 - 24590-LAW-PIN-P01T-00080: DELETED SECTION CUT SYMBOLOLOGY.
 - 24590-LAW-PIN-P01T-00083: ADDED LPO304G. DELETED DOOR ON EAST WALL OF L-0304G. REVISED DOOR ON EAST WALL OF L-0316.
 - 24590-LAW-AIN-A10T-00089: REVISED DOORS AND WALL IN LCO305 AND LCO306.
 - 24590-LAW-AIN-A10T-00089: REVERSED DOOR SWING DIRECTION ON WEST WALL OF L-0304B.
 - REVERSED DOOR SWING DIRECTION ON NORTH WALL OF L-0322.
 - DELETED HOLD 19. HOLDS ARE NO LONGER TRACKED ON GA DRAWINGS.
 - REVISED TITLE BLOCK.
 - ADDED NOTE 7. REVISED NOTES 3 AND 6.

DESIGN CHANGES INCORPORATED BY REFERENCE	
DOCUMENT NO	DOCUMENT NO
24590-WTP-FC-C-12-0325	



PLAN AT EL 48'-0"

- Proposed rooms to include in the DWP
- LAW containment building boundary



PARTIAL PLAN AT EL 48'-0"

- LEGEND:
- CA CONTROLLED ACCESS
 - EE EMERGENCY EXIT
 - FCU FAN COIL UNIT
 - FD FIRE DOOR
 - L-XXXX ROOM, CELL, (VAULT) OR TUNNEL
 - LCXXXX MEZZANINE
 - LMXXXX ROOM PLATFORM
 - LPXXXX CORRIDOR PLATFORM
 - LCHXX CHASE
 - LELVXX ELEVATOR
 - LSTXX STAIR
 - Equipment Laydown Area symbols
 - CONCRETE
 - CHECKERED PLATE
 - GRATING
 - EMERGENCY EYEWASH
 - LADDER
 - EMERGENCY SHOWER/EYEWASH
 - FLOOR PENETRATION

REV	DESCRIPTION	ORG	CHKD	RWD	APVD	DATE
6	REVISED TO INCORPORATE CHANGES IN NOTE 7	JTC	DSS	RWP	WJL	8/17/15
5	REVISED TO INCORPORATE CHANGES IN NOTE 6	JTC	ZB	RM	JL/KH	10/14/13
4	REVISED TO INCORPORATE CHANGES IN NOTE 3	CMS	RLS	JKL	PAP	11/16/11
0	ISSUED FOR DESIGN - SUPERSEDES					
	DWG-W375LV-PL00046, REV D	TH	CMS	PR	CJW	11/25/03

REVISION HISTORY	
PROJECT No.	24590
SITE	HANFORD
AREA	200E
BUILDING No.	20
BY	
DATE	
ORIGINATOR	TIMOTHY E. HAWKINS 11/25/03
CHECKER	CRAIG M. SALERNO 11/25/03
APPROVER	C. J. WINKLER 11/25/03
REVIEWER	PHIL REICHERT 11/25/03

ISSUED BY	PROJECT No.	24590
ISSUE STAMP	SITE	HANFORD
	AREA	200E
	BUILDING No.	20
	BY	
	DATE	
	ORIGINATOR	TIMOTHY E. HAWKINS 11/25/03
	CHECKER	CRAIG M. SALERNO 11/25/03
	APPROVER	C. J. WINKLER 11/25/03
	REVIEWER	PHIL REICHERT 11/25/03

RIVER PROTECTION PROJECT
 WASTE TREATMENT PLANT
 2435 STEVENS CENTER PLACE
 RICHLAND, WA 99354
 CONTRACT No: DE-AC27-01RW14136

LAW VITRIFICATION BUILDING
GENERAL ARRANGEMENT
PLAN AT EL. 48'-0"