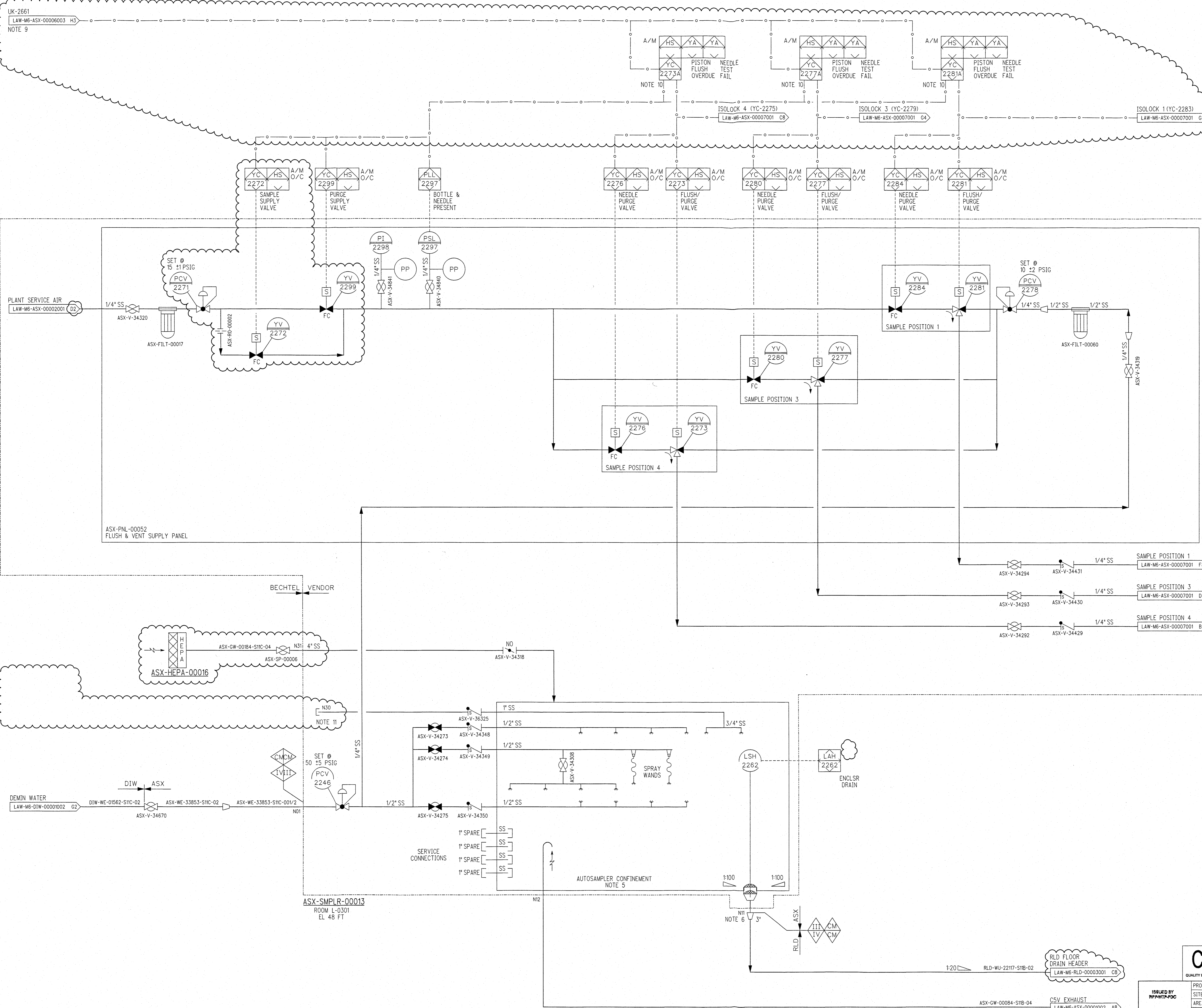


ASX-HEPA-00016
AUTOSAMPLER
INLEED
HEPA FILTER
94 SCFM
Ø 0.62 IN WG



NOTES:

- SEE DRAWINGS 24590-WTP-M6-50-00001 THROUGH 24590-WTP-M6-50-00008 FOR GENERAL NOTES, SYMBOLS AND LEGEND, AND GENERAL SLOPE REQUIREMENTS.
- CONTENTS OF THIS DOCUMENT ARE DANGEROUS WASTE PERMIT AFFECTING.
- THE PRESSURE BOUNDARY FOR ALL COMPONENTS ON THIS DRAWING IS QUALITY LEVEL CM AND SEISMIC CATEGORY SC-III, UNLESS OTHERWISE NOTED.
- ALL BECTEL LINES SHOWN ON THIS DRAWING SHALL BE FREE DRAINING, UNLESS OTHERWISE NOTED.
- PROVIDES SECONDARY CONTAINMENT AND LEAK DETECTION FOR LEAKS AND SPILLS.
- FLUSH LINES DRAIN INTO THE RLD HEADER BELOW THE DRAIN WEIR.
- THIS DRAWING CONTAINS INFORMATION FROM SUPPLIER SUBMITTAL 24590-QL-HC4-HAHH-00001-06-00083 REV 00H AND -00084 REV 00F. VENDOR DRAWING FORMAT MAY HAVE BEEN MODIFIED TO MEET BECTEL DRAWING FORMAT.
- THIS DRAWING IS CONVERTED FROM A SINGLE SHEET TO MULTI-SHEET DRAWINGS AND, IN PART, SUPERSEDES 24590-LAW-M6-ASX-00002 REV 2. CLOUDS DEPICT MAJOR CHANGES MADE FROM SUPERSEDED DRAWING. THIS DRAWING INCLUDES INFORMATION FROM 24590-LAW-M6N-ASX-00009.
- FOR DETAILS OF UK-2061 REFER TO LAB ASX LOGIC AND SEQUENTIAL FUNCTIONAL CHART (J3) DRAWINGS.
- ISOLOCK PERFORMS FOLLOWING OPERATIONS PER REFERENCE 7:
-TAKE SAMPLE
-NEEDLE BLOCKAGE/BOTTLE PRESENT TESTS
-FLUSH & PURGE OPERATIONS: SAMPLE-PURGE, FORWARD-FLUSH PISTON-PURGE, PISTON-FLUSH DRY-SYSTEM-PURGE.
- SPRINKLER MANIFOLD FOR ASX UNIT WILL NOT BE USED. ABANDON IN PLACE.
- REVISION 1: INCORPORATED 24590-LAW-M6N-ASX-00007, -00010, -00030, AND 24590-WTP-FC-M-17-0143. INCORPORATED IMPACT OF 24590-LAW-EIE-MS-18-00008 REV 0. UPDATED OFF SHEET CONNECTOR AND REFERENCES.

HOLD/OPEN ITEMS:

NONE

REFERENCES:

- 24590-WTP-32D-ASX-00001, SYSTEM DESIGN DESCRIPTION OF THE AUTOSAMPLING SYSTEM (ASX).
- 24590-WTP-3PS-MHSS-T0002, ENGINEERING SPECIFICATION FOR AUTOSAMPLING SYSTEM (ASX).
- 24590-QL-HC4-HAHH-00001-06-00059, AUTOSAMPLING SYSTEM ASX-SMPLR-00013, OUTLINE DIM & MTG DET, SHEET 1 OF 2.
- 24590-QL-HC4-HAHH-00001-06-00060, AUTOSAMPLING SYSTEM ASX-SMPLR-00013, OUTLINE DIM & MTG DET, SHEET 2.
- 24590-QL-HC4-HAHH-00001-07-00001, AUTOSAMPLING CONTROL SYSTEM SPECIFICATION.
- DELETED
- 24590-QL-HC4-HAHH-00001-07-00041, AUTOSAMPLING CONTROL SYSTEM DEVICE CONTROL TEMPLATE NDL FFT.

<p>CM QUALITY ASSURANCE</p>		<p>PROJECT No. 24590 SITE HANFORD AREA 200E BUILDING No. 20</p>		<p>CONTRACT No. DE-AC27-01RV14136</p>																						
<p>ORIGINATOR SLOCUMB, RENEE CHECKER JOHNSON, NCA T APPROVER STEVENS, R/SCHNEIDER, J REVIEWER KRETZSCHMAR / LASELY</p>		<p>DATE 12/8/09 12/9/09 12/11/09 12/9/09</p>		<p>RIVER PROTECTION PROJECT WASTE TREATMENT PLANT 2435 STEVENS CENTER PLACE RICHLAND, WA 99354</p>																						
<p>CONTENT APPLICABLE TO ALARA? <input type="checkbox"/> YES <input checked="" type="checkbox"/> NO ADR NO. 24590-WTP-ADR-M-04-0007 REV: 2</p>		<p>SCALE: NONE</p>		<p>REVISION HISTORY</p> <table border="1"> <tr> <th>REV</th> <th>DESCRIPTION</th> <th>ORG</th> <th>CHKD</th> <th>RVWD</th> <th>APVD</th> <th>DATE</th> </tr> <tr> <td>1</td> <td>REVISED PER NOTE 12</td> <td>CK</td> <td>QU</td> <td>JA</td> <td>RS</td> <td>7/24/18</td> </tr> <tr> <td>0</td> <td>ISSUED FOR CONSTRUCTION, SEE NOTES 7, 8</td> <td>RS</td> <td>NJ</td> <td>SK/CL</td> <td>RS/JS</td> <td>12/11/09</td> </tr> </table>		REV	DESCRIPTION	ORG	CHKD	RVWD	APVD	DATE	1	REVISED PER NOTE 12	CK	QU	JA	RS	7/24/18	0	ISSUED FOR CONSTRUCTION, SEE NOTES 7, 8	RS	NJ	SK/CL	RS/JS	12/11/09
REV	DESCRIPTION	ORG	CHKD	RVWD	APVD	DATE																				
1	REVISED PER NOTE 12	CK	QU	JA	RS	7/24/18																				
0	ISSUED FOR CONSTRUCTION, SEE NOTES 7, 8	RS	NJ	SK/CL	RS/JS	12/11/09																				
<p>ASX-SMPLR-00013 ROOM L-0301 EL 48 FT</p>		<p>ASX-SMPLR-00013 AUTOSAMPLING SYSTEM AUTOSAMPLER AND UTILITY PANELS</p>		<p>24590-LAW-M6-ASX-00002002</p>																						