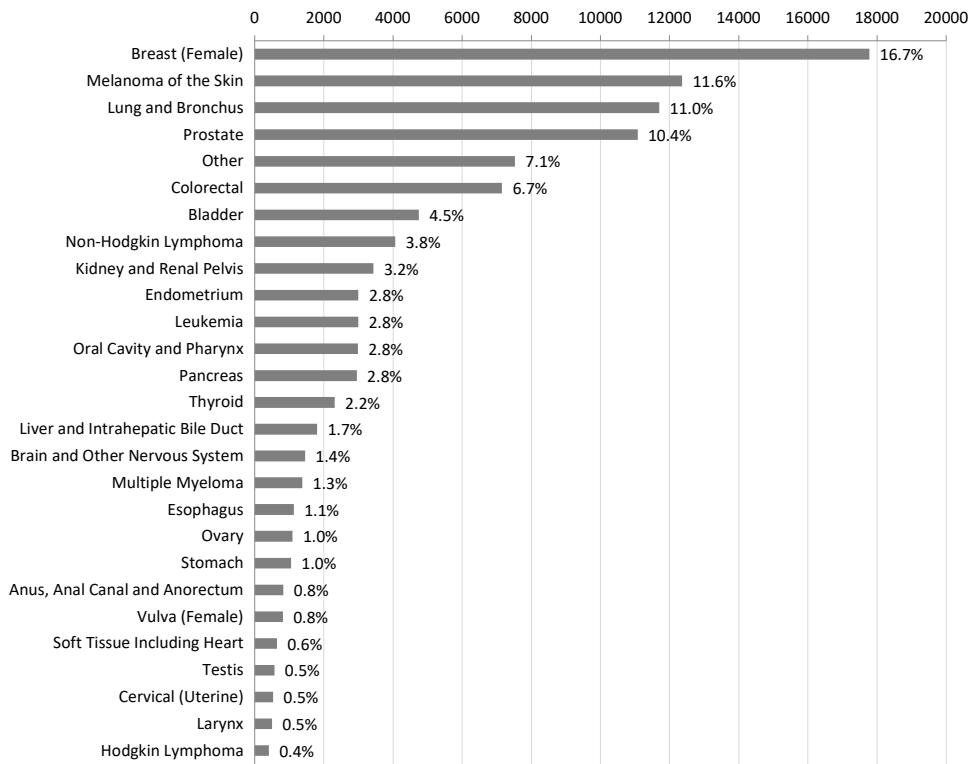


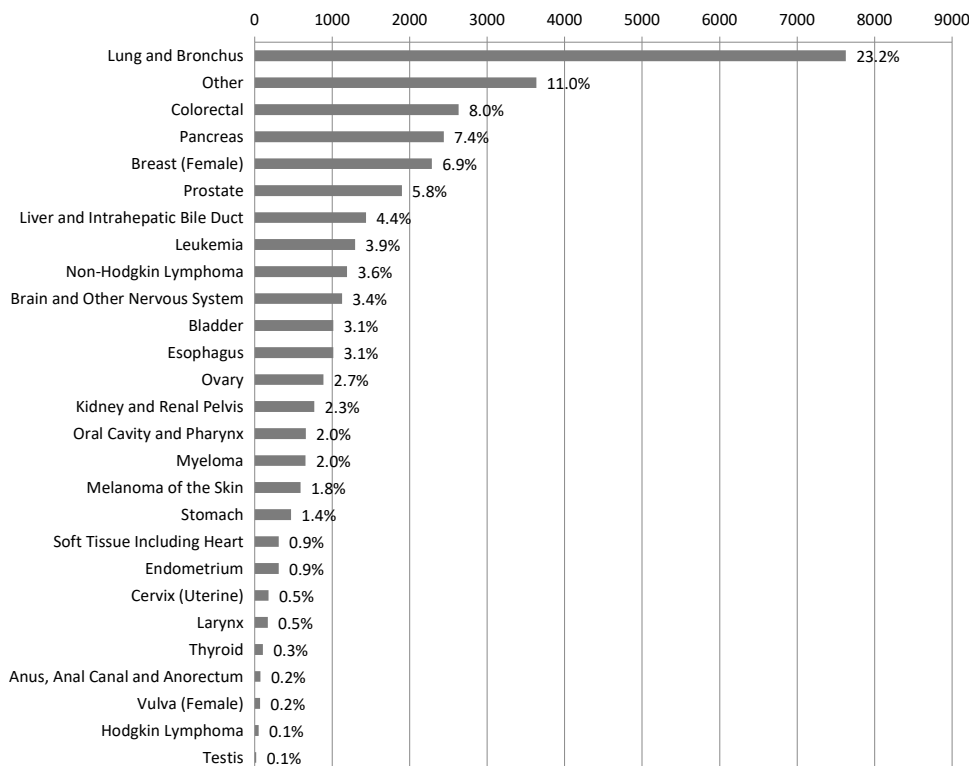
**Cancer by
Race and Ethnicity
by Site**

Percent Distribution of Cancer

2016-2018 Cancer Incidence of Washington State Residents White single race only, non-Hispanic

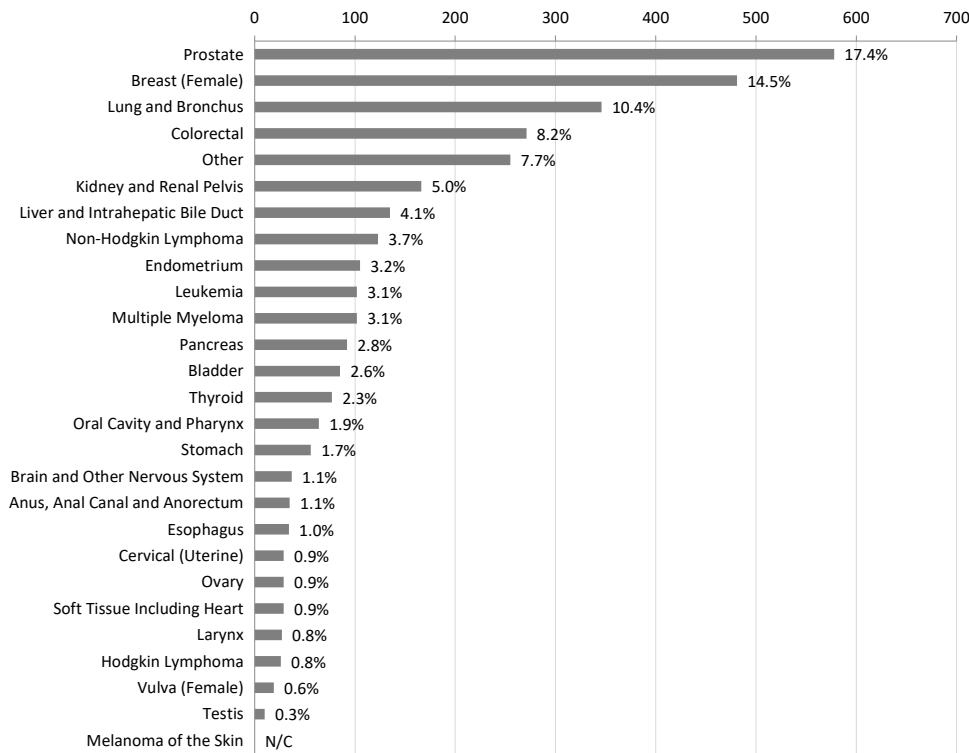


2016-2018 Cancer Mortality of Washington State Residents White single race only, non-Hispanic

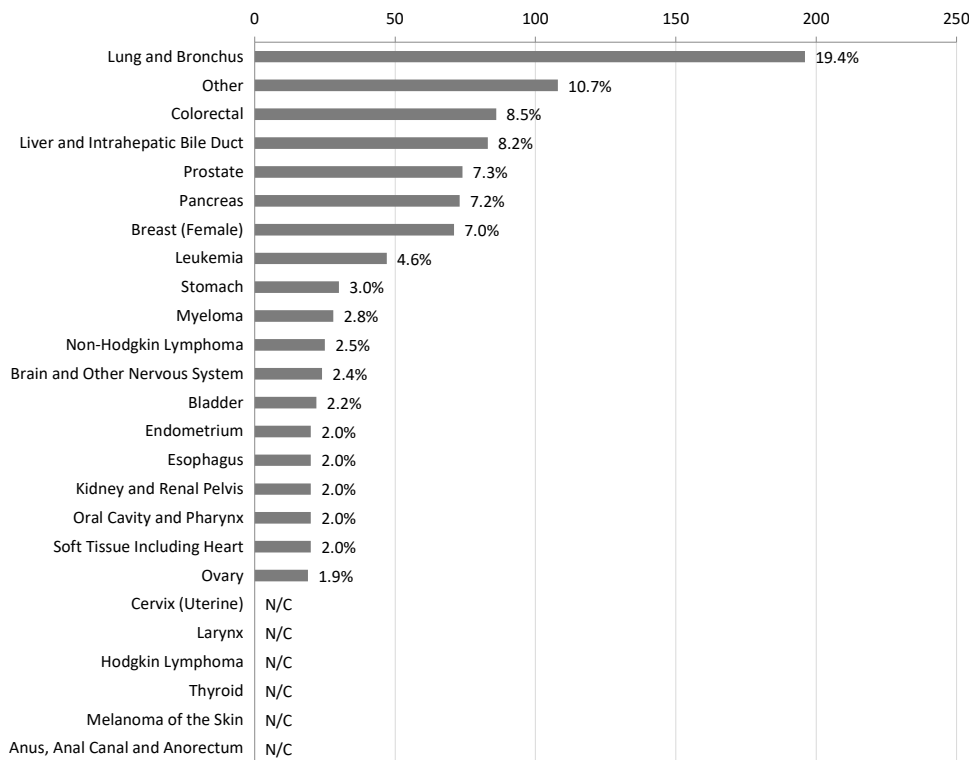


Percent Distribution of Cancer

2016-2018 Cancer Incidence of Washington State Residents Black single race only, non-Hispanic



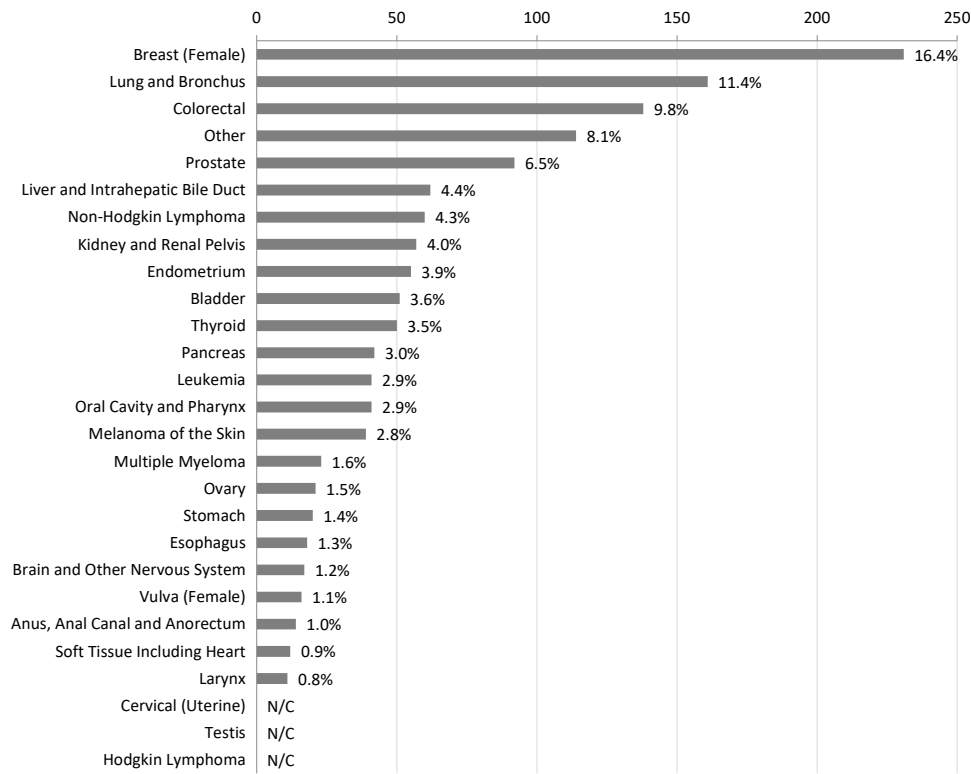
2016-2018 Cancer Mortality of Washington State Residents Black single race only, non-Hispanic



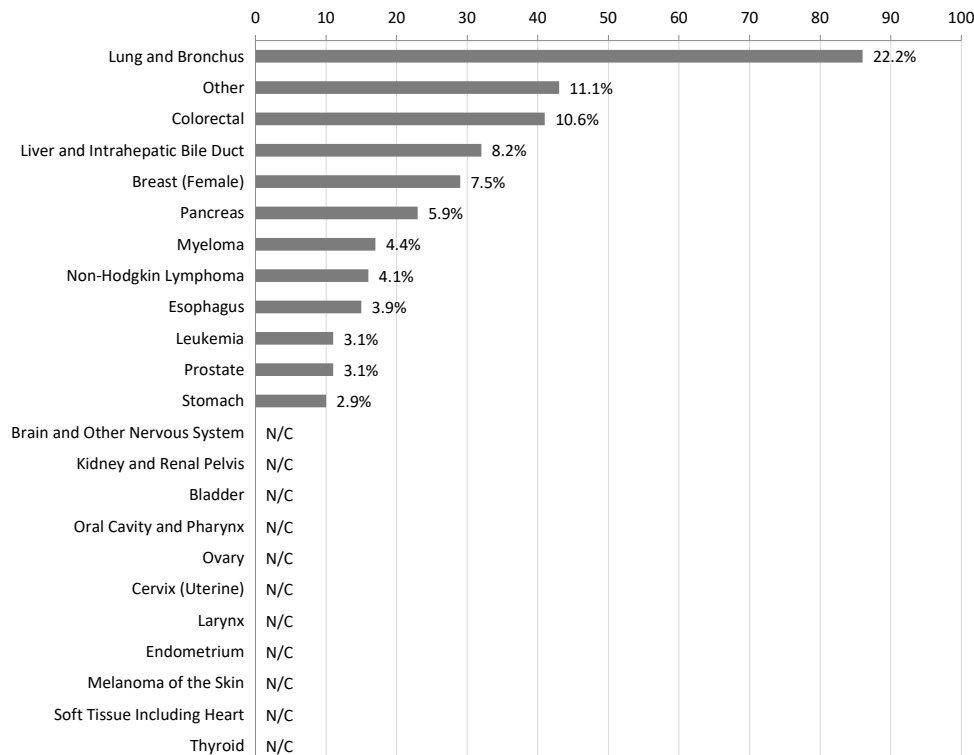
N/C: not calculated because the number of cases less than 10

Percent Distribution of Cancer

2016-2018 Cancer Incidence of Washington State Residents American Indian/Alaska Native single race only, non-Hispanic



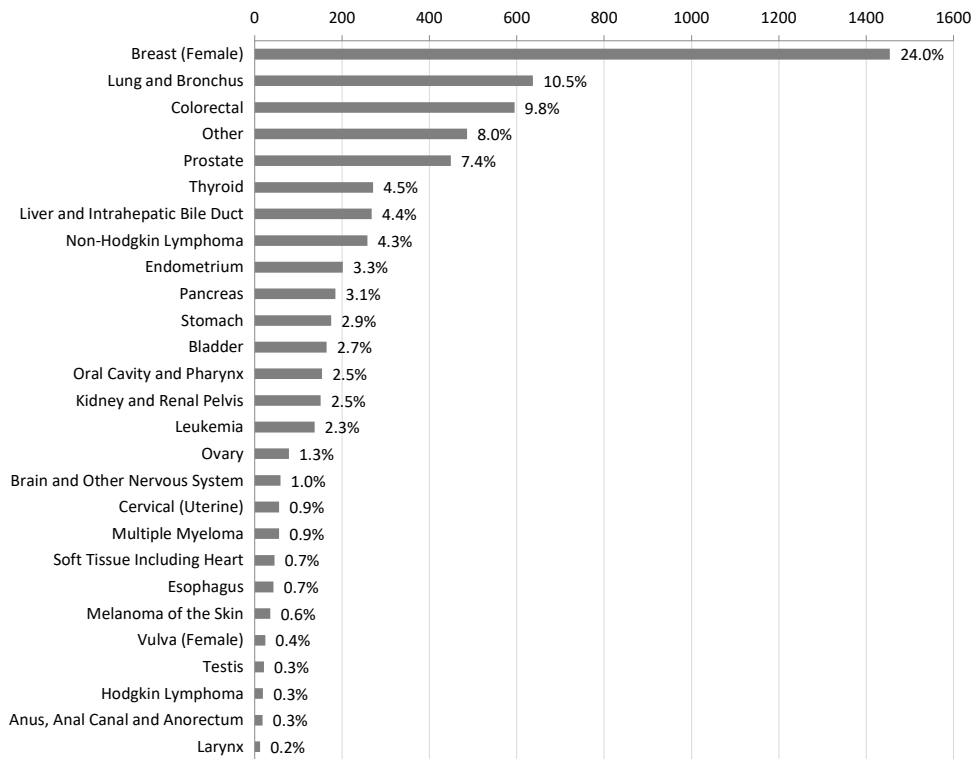
2016-2018 Cancer Mortality of Washington State Residents American Indian/Alaska Native single race only, non-Hispanic



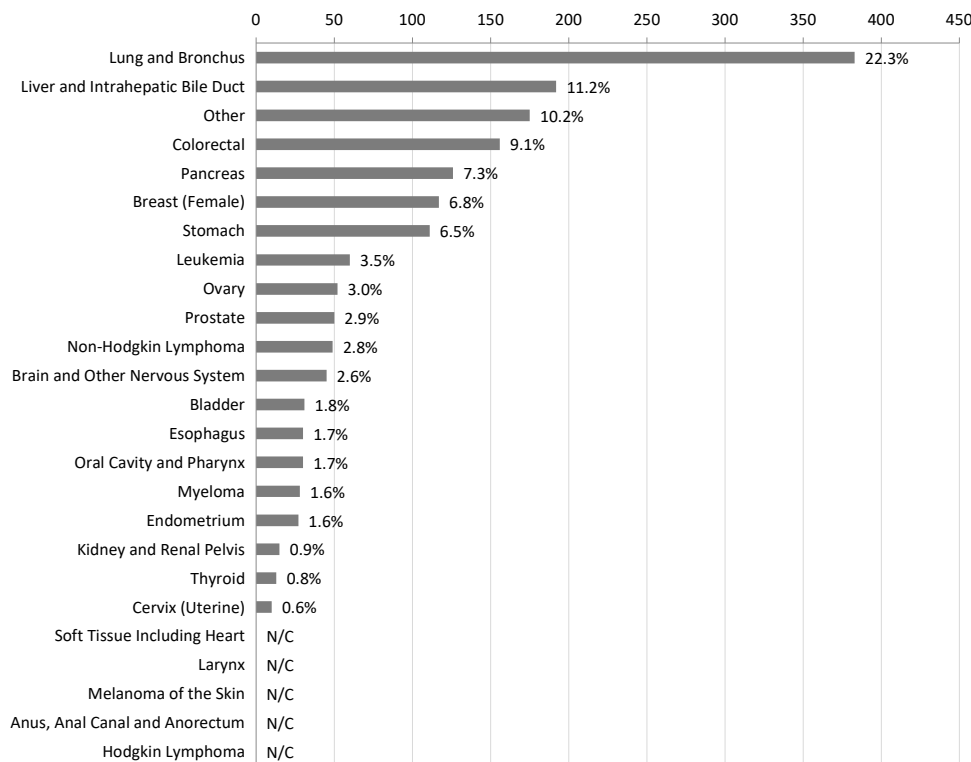
N/C: not calculated because the number of cases less than 10

Percent Distribution of Cancer

2016-2018 Cancer Incidence of Washington State Residents Asian single race only, non-Hispanic



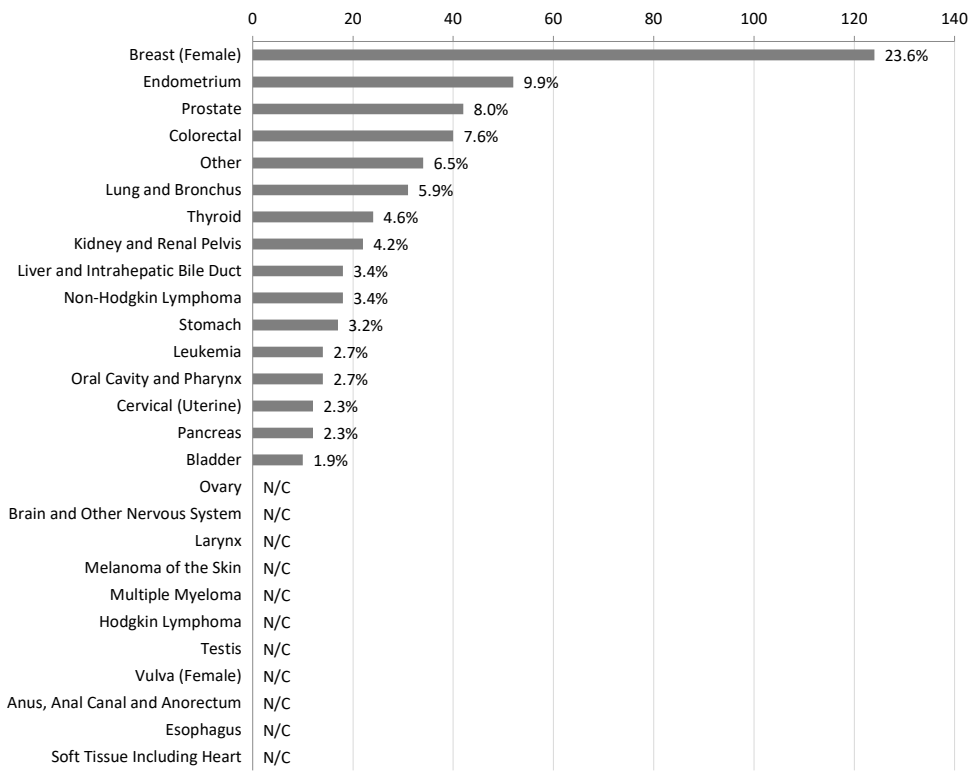
2016-2018 Cancer Mortality of Washington State Residents Asian single race only, non-Hispanic



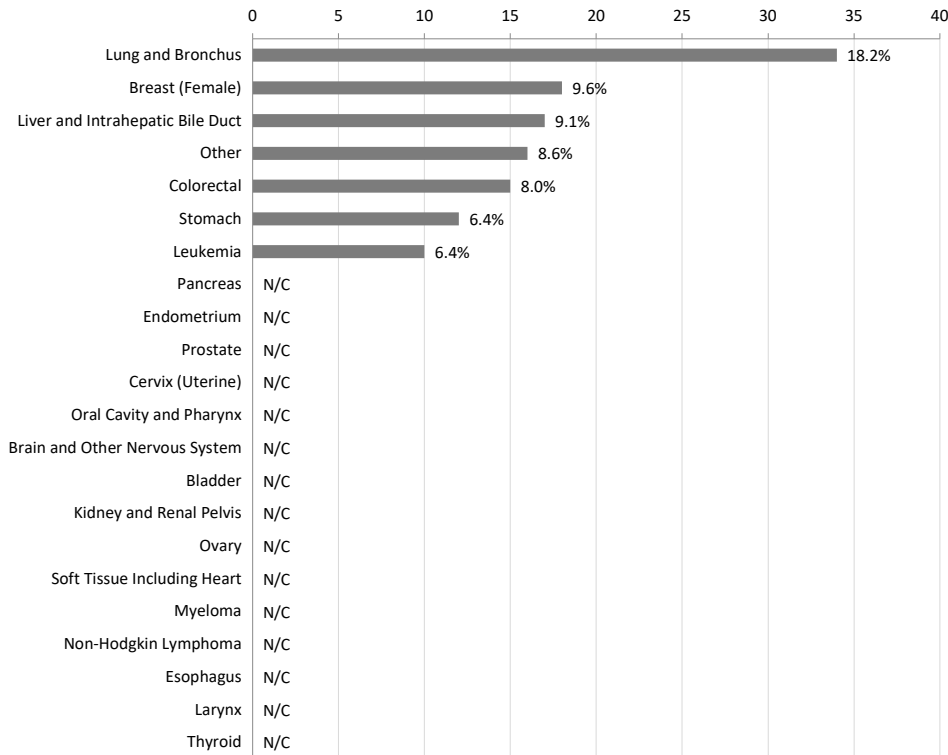
N/C: not calculated because the number of cases less than 10

Percent Distribution of Cancer

2016-2018 Cancer Incidence of Washington State Residents Native Hawaiian or Pacific Islander single race only, non-Hispanic



2016-2018 Cancer Mortality of Washington State Residents Native Hawaiian or Pacific Islander single race only, non-Hispanic

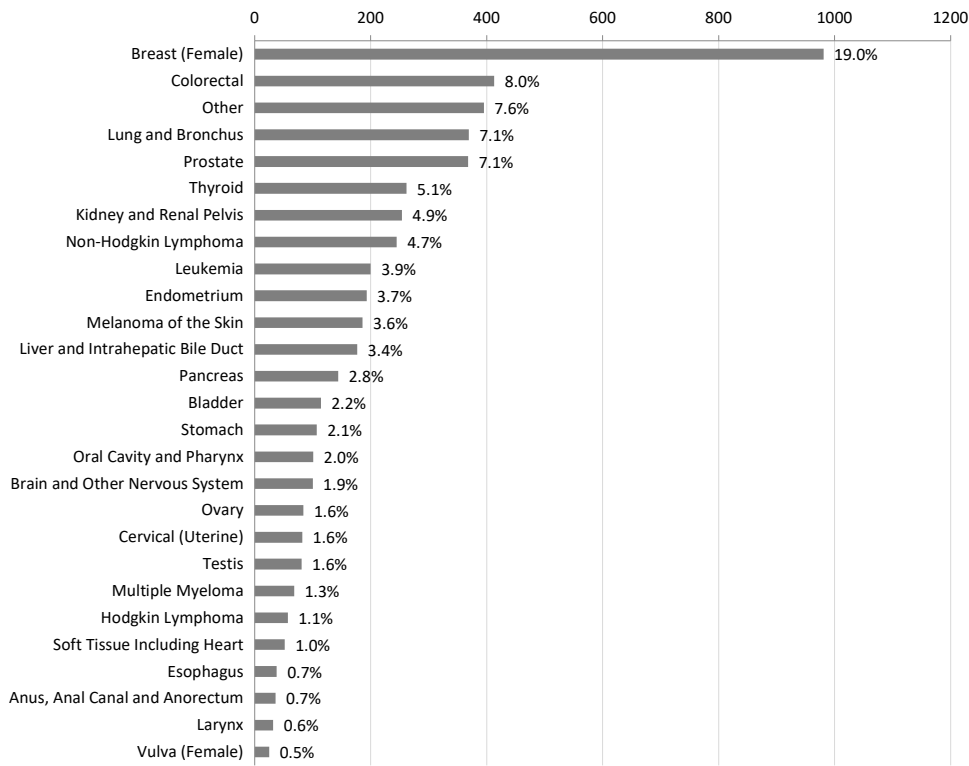


N/C: not calculated because the number of cases less than 10

Percent Distribution of Cancer

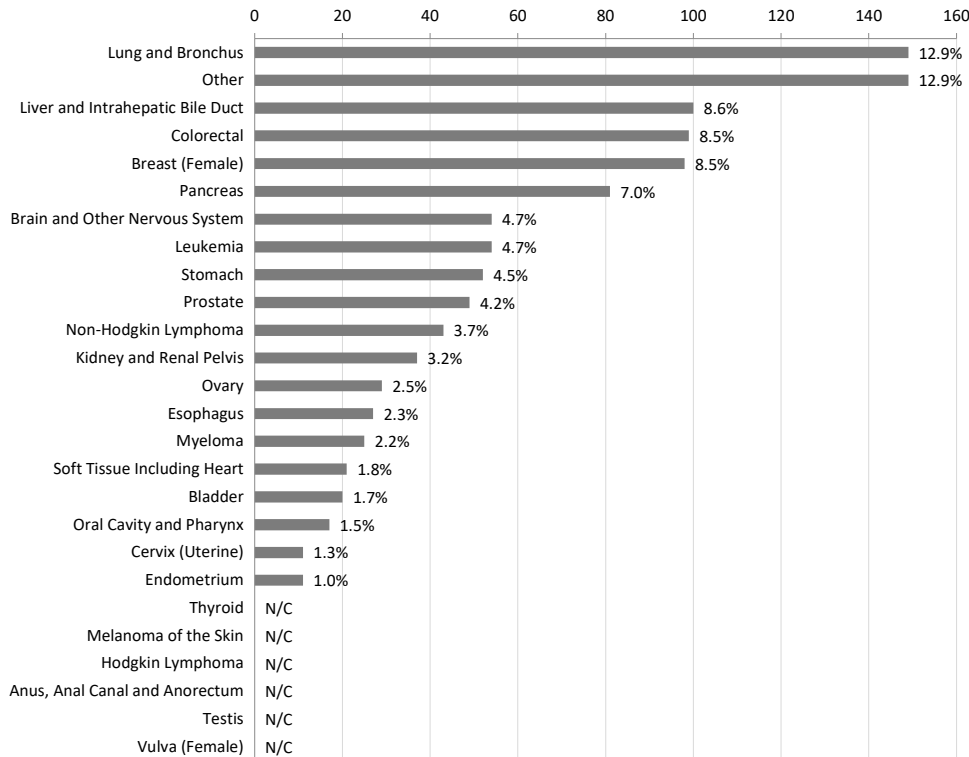
2016-2018 Cancer Incidence of Washington State Residents

Hispanic



2016-2018 Cancer Mortality of Washington State Residents

Hispanic



N/C: not calculated because the number of cases less than 10

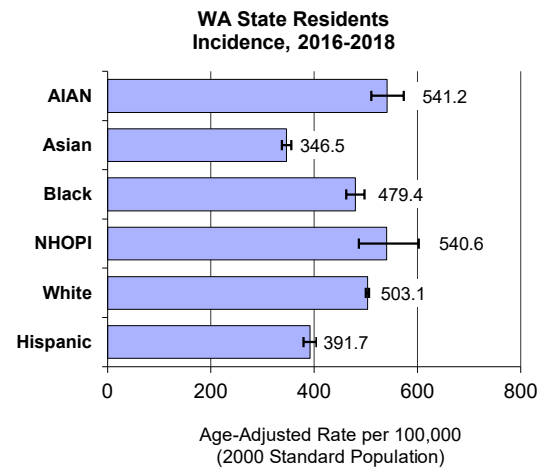
All Sites Combined

DATA DEFINITIONS: Incidence data were obtained from the Washington State Cancer Registry using ICD-0-3 codes C00.0 - C80.9 all histology codes. Death data were obtained from Washington State death certificates using the underlying cause of death ICD-9 codes 140-208, 238.6 (1992-1998), ICD-10 codes C00-C97 (1999-2018).

2016-2018 Washington State Residents

Average Annual Incidence and Age-Adjusted Rates

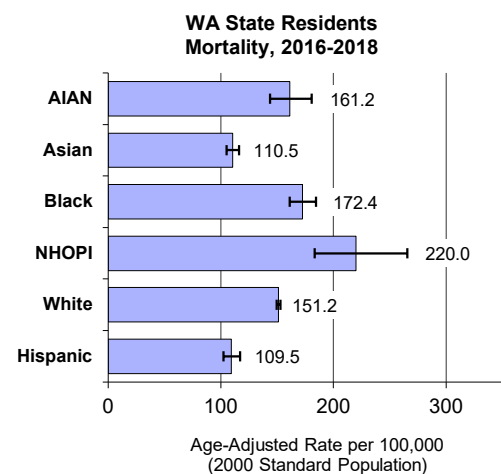
Race*/Ethnicity Group	Washington	
	New Cases Avg/Year	Age-Adjusted Rate 2000 Std Pop
AIAN ¹	470	541.2
Asian	2,018	346.5
Black	1,106	479.4
NHOPI ²	175	540.6
White	35,423	503.1
Hispanic	1,721	391.7



2016-2018 Washington State Residents

Average Annual Death and Age-Adjusted Rates

Race*/Ethnicity Group	Washington	
	Deaths Avg/Year	Age-Adjusted Rate 2000 Std Pop
AIAN ¹	129	161.2
Asian	573	110.5
Black	337	172.4
NHOPI ²	62	220.0
White	10,972	151.2
Hispanic	386	109.5



* Race groups include single race only, non-Hispanics except for the Hispanic group.

¹ AIAN: American Indian or Alaska Native

² NHOPI: Native Hawaiian or Other Pacific Islander

n/c - Rate and count not calculated when there were less than 10 cases for the period 2016-2018

Figures include in situ and invasive cancers

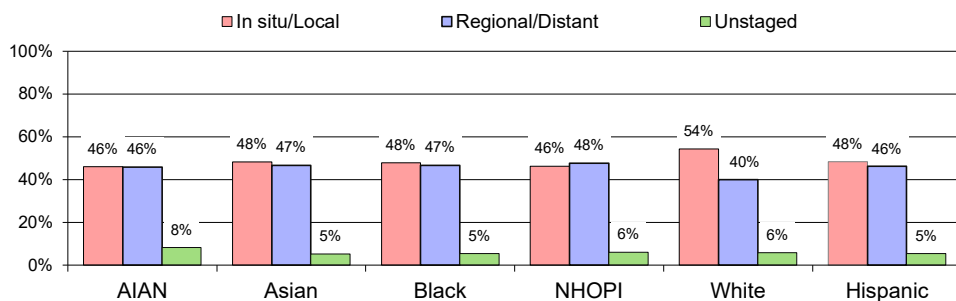
Incidence Data: Washington State Department of Health, Washington State Cancer Registry, released in March 2021.

Mortality Data: Washington State Department of Health, Center for Health Statistics, released in October 2019.

All Sites Combined

2016-2018 Washington State Residents

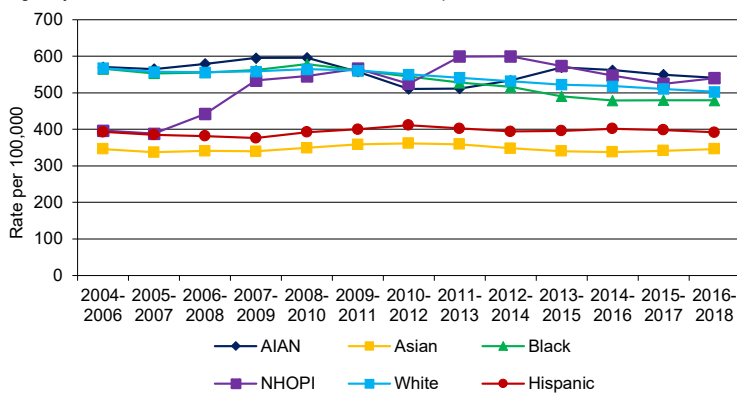
Stage At Diagnosis^{*,1,2}



n/c Total number of cases < 15

2004-2018 Washington State Residents Incidence Rates Trends^{*,1,2}

Age-adjusted rate standardized to 2000 US Standard Population

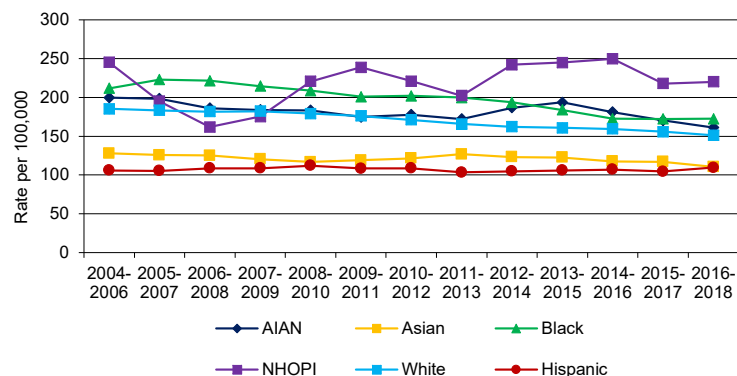


For all cancers combined age-adjusted incidence rates have changed as follows.

- AIAN:** Rates remained level from 2004 to 2018.
- Asian:** Rates remained level from 2004 to 2018.
- Black:** Rates decreased steadily by 1.6% per year from 2004 to 2018.
- NHOPI:** Rates remained level from 2004 to 2018.
- White:** Rates remained level from 2004 to 2010; decreased steadily by 1.6% per year since 2010.
- Hispanic:** Rates remained level from 2004 to 2018.

2004-2018 Washington State Residents Mortality Rates Trends^{*,1,2}

Age-adjusted rate standardized to 2000 US Standard Population



For all cancers combined age-adjusted mortality rates have changed as follows.

- AIAN:** Rates decreased steadily by 1.4% per year from 2004 to 2018.
- Asian:** Rates decreased slightly by 0.9% per year from 2004 to 2018.
- Black:** Rates remained level from 2004 to 2006; decreased steadily by 2.5% per year since 2006.
- NHOPI:** Rates remained level from 2004 to 2018.
- White:** Rates decreased steadily by 1.8% per year from 2004 to 2018.
- Hispanic:** Rates remained level from 2004 to 2018.

* Rates not calculated or displayed when there were less than 10 cases for the time period.

* Race groups include single race only, non-Hispanics except for the Hispanic group.

¹ AIAN: American Indian or Alaska Native

² NHOPI: Native Hawaiian or Other Pacific Islander

Incidence Data: Washington State Department of Health, Washington State Cancer Registry, released in March 2021.

Mortality Data: Washington State Department of Health, Center for Health Statistics, released in October 2019.

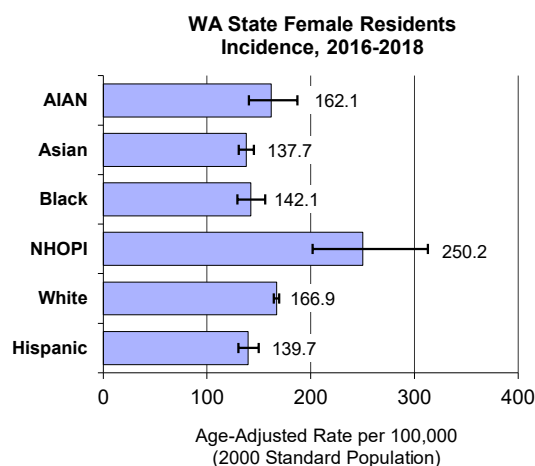
Breast (Female)

DATA DEFINITIONS: Incidence data were obtained from the Washington State Cancer Registry using primary site ICD-0-3 codes C50.0-C50.9, excluding histology codes 9140, 9050-9055, 9590-9992. Death data were obtained from Washington State death certificates using the underlying cause of death ICD-9 codes 174.0-174.9 (1992-1998), ICD-10 codes C50 (1999-2018).

2016-2018 Washington State Female Residents

Average Annual Incidence and Age-Adjusted Rates

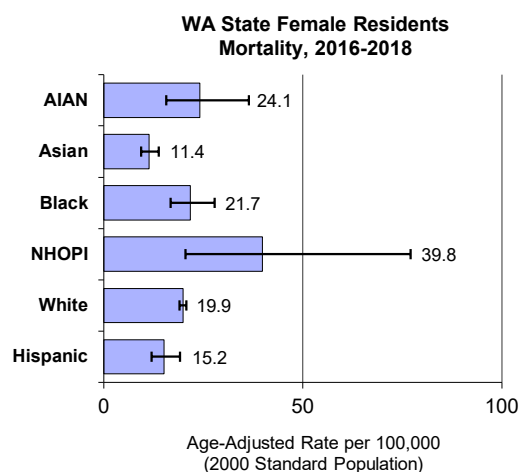
Race*/Ethnicity Group	Washington	
	New Cases Avg/Year	Age-Adjusted Rate 2000 Std Pop
AIAN ¹	77	162.1
Asian	485	137.7
Black	160	142.1
NHOPI ²	41	250.2
White	5,926	166.9
Hispanic	327	139.7



2016-2018 Washington State Female Residents

Average Annual Death and Age-Adjusted Rates

Race*/Ethnicity Group	Washington	
	Deaths Avg/Year	Age-Adjusted Rate 2000 Std Pop
AIAN ¹	10	24.1
Asian	39	11.4
Black	24	21.7
NHOPI ²	6	39.8
White	762	19.9
Hispanic	33	15.2



* Race groups include single race only, non-Hispanics except for the Hispanic group.

¹ AIAN: American Indian or Alaska Native

² NHOPI: Native Hawaiian or Other Pacific Islander

n/c - Rate and count not calculated when there were less than 10 cases for the period 2016-2018

Figures include in situ and invasive cancers

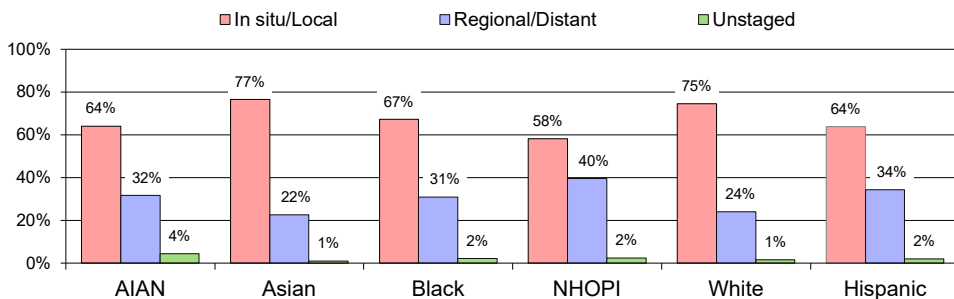
Incidence Data: Washington State Department of Health, Washington State Cancer Registry, released in March 2021.

Mortality Data: Washington State Department of Health, Center for Health Statistics, released in October 2019.

Breast (Female)

2016-2018 Washington State Female Residents

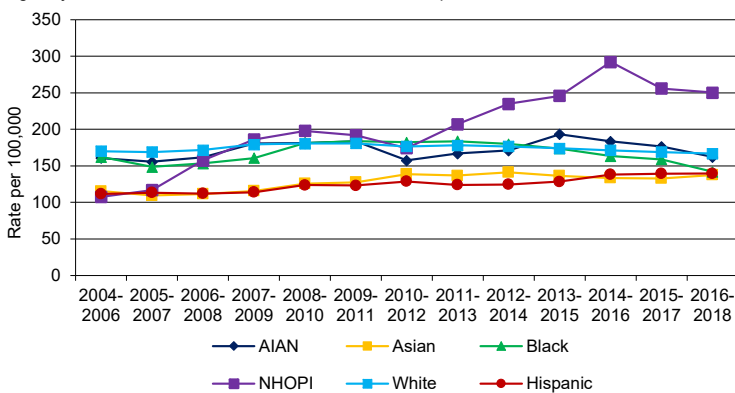
Stage At Diagnosis^{*,1,2}



n/c Total number of cases less than 15

2004-2018 Washington State Female Residents Incidence Rates Trends^{*,1,2}

Age-adjusted rate standardized to 2000 US Standard Population



For female breast cancer age-adjusted incidence rates have changed as follows.

AIAN: Rates remained level from 2004 to 2018.

Asian: Rates increased steadily by 1.6% per year from 2004 to 2018.

Black: Rates remained level from 2004 to 2013; decreased sharply by 7.4% per year since 2013.

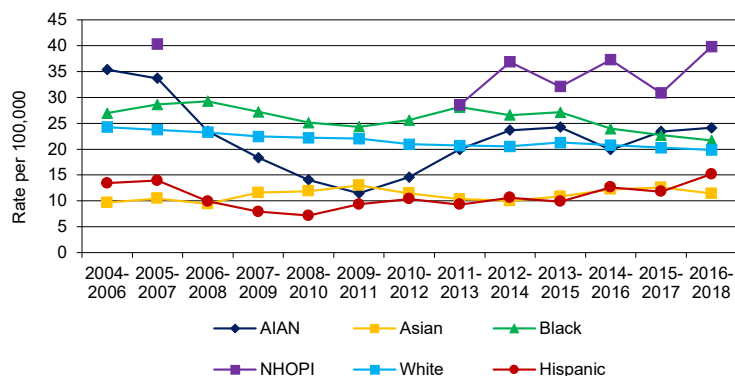
NHOPI: Rates increased sharply by 5.3% per year from 2004 to 2018.

White: Rates increased steadily by 1.8% per year from 2004 to 2009; decreased steadily by 1.1% per year since 2009.

Hispanic: Rates increased steadily by 1.8% per year from 2004 to 2018.

2004-2018 Washington State Female Residents Mortality Rates Trends^{*,1,2}

Age-adjusted rate standardized to 2000 US Standard Population



For female breast cancer age-adjusted mortality rates have changed as follows.

AIAN: Rates decreased sharply by 21.3% per year from 2004 to 2009; remained level since 2009.

Asian: Rates remained level from 2004 to 2018.

Black: Rates remained level from 2004 to 2018.

NHOPI: Trends in rates from 2004 to 2018 could not be assessed due to small numbers of deaths.

White: Rates decreased steadily by 1.6% per year from 2004 to 2018.

Hispanic: Rates remained level from 2004 to 2018.

* Rates not calculated or displayed when there were less than 10 cases for the time period.

* Race groups include single race only, non-Hispanics except for the Hispanic group.

¹ AIAN: American Indian or Alaska Native

² NHOPI: Native Hawaiian or Other Pacific Islander

Incidence Data: Washington State Department of Health, Washington State Cancer Registry, released in March 2021.

Mortality Data: Washington State Department of Health, Center for Health Statistics, released in October 2019.

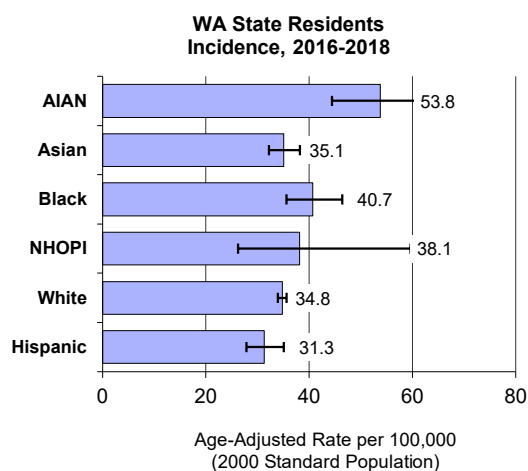
Colorectal

DATA DEFINITIONS: Incidence data were obtained from the Washington State Cancer Registry using primary site ICD-0-3 codes C18.0-C18.9, C19.9, C20.9, C26.0, excluding histology codes 9140, 9050-9055, 9590-9992. Death data were obtained from Washington State death certificates using the underlying cause of death ICD-9 codes 153.0-154.1, 159.0 (1992-1998), ICD-10 code C18-C20, C26.0 (1999-2018).

2016-2018 Washington State Residents

Average Annual Incidence and Age-Adjusted Rates

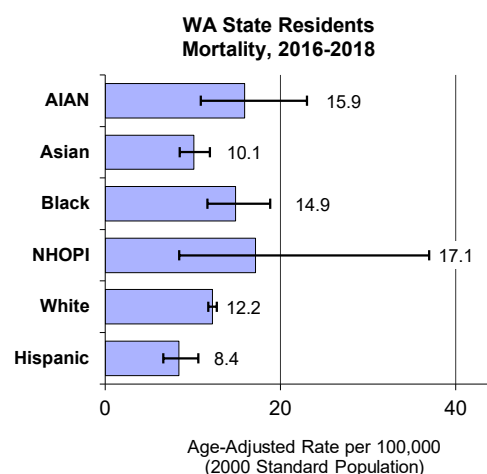
Race*/Ethnicity Group	Washington	
	New Cases Avg/Year	Age-Adjusted Rate 2000 Std Pop
AIAN ¹	46	53.8
Asian	198	35.1
Black	90	40.7
NHOPI ²	13	38.1
White	2,385	34.8
Hispanic	138	31.3



2016-2018 Washington State Residents

Average Annual Death and Age-Adjusted Rates

Race*/Ethnicity Group	Washington	
	Deaths Avg/Year	Age-Adjusted Rate 2000 Std Pop
AIAN ¹	14	15.9
Asian	52	10.1
Black	29	14.9
NHOPI ²	5	17.1
White	877	12.2
Hispanic	33	8.4



* Race groups include single race only, non-Hispanics except for the Hispanic group.

¹ AIAN: American Indian or Alaska Native

² NHOPI: Native Hawaiian or Other Pacific Islander

n/c - Rate and count not calculated when there were less than 10 cases for the period 2016-2018

Figures include in situ and invasive cancers

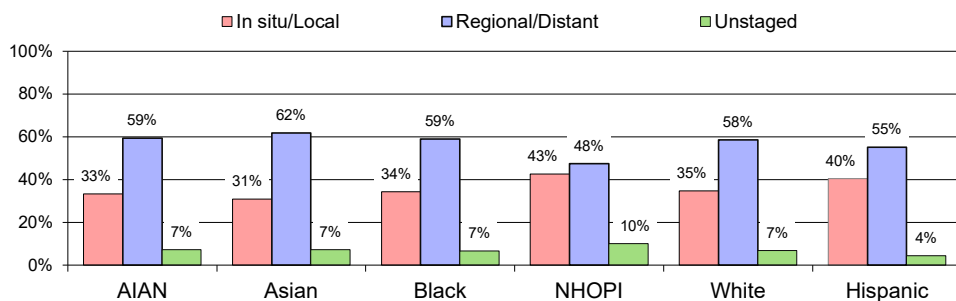
Incidence Data: Washington State Department of Health, Washington State Cancer Registry, released in March 2021.

Mortality Data: Washington State Department of Health, Center for Health Statistics, released in October 2019.

Colorectal

2016-2018 Washington State Residents

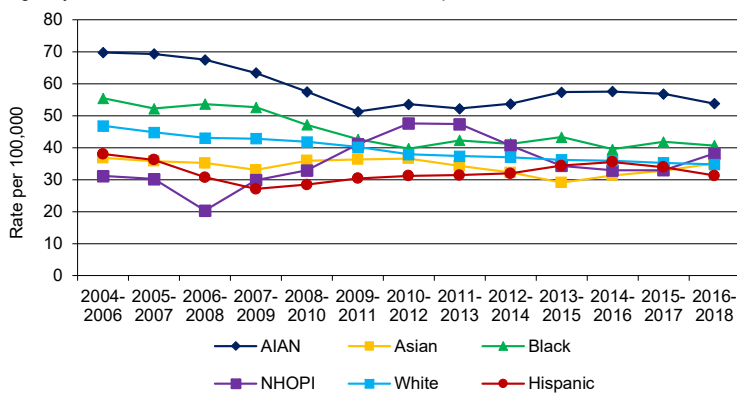
Stage At Diagnosis ^{*,1,2}



n/c Total number of cases < 15

2004-2018 Washington State Residents Incidence Rates Trends ^{*,1,2}

Age-adjusted rate standardized to 2000 US Standard Population



For colorectal cancer age-adjusted incidence rates have changed as follows.

AIAN: Rates decreased steadily by 2.3% per year from 2004 to 2018.

Asian: Rates remained level from 2004 to 2018.

Black: Rates decreased steadily by 2.6% per year from 2004 to 2018.

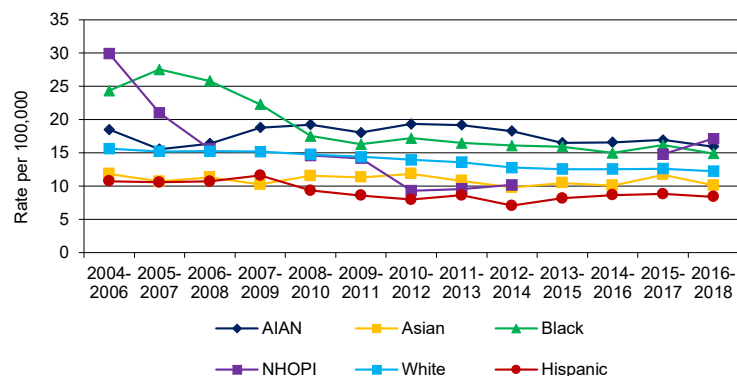
NHOPI: Rates remained level from 2004 to 2018.

White: Rates decreased steadily by 2.5% per year from 2004 to 2018.

Hispanic: Rates remained level from 2004 to 2018.

2004-2018 Washington State Residents Mortality Rates Trends ^{*,1,2}

Age-adjusted rate standardized to 2000 US Standard Population



For colorectal cancer age-adjusted mortality rates have changed as follows.

AIAN: Rates remained level from 2004 to 2018.

Asian: Rates remained level from 2004 to 2018.

Black: Rates decreased sharply by 4.4% per year from 2004 to 2018.

NHOPI: Trends in rates from 2004 to 2018 could not be assessed due to small numbers of deaths.

White: Rates decreased steadily by 2.2% per year from 2004 to 2018.

Hispanic: Rates remained level from 2004 to 2018.

* Rates not calculated or displayed when there were less than 10 cases for the time period.

* Race groups include single race only, non-Hispanics except for the Hispanic group.

¹ AIAN: American Indian or Alaska Native

² NHOPI: Native Hawaiian or Other Pacific Islander

Incidence Data: Washington State Department of Health, Washington State Cancer Registry, released in March 2021.

Mortality Data: Washington State Department of Health, Center for Health Statistics, released in October 2019.

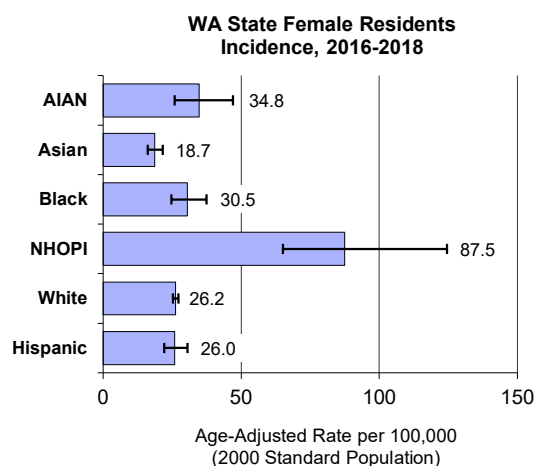
Endometrium

DATA DEFINITIONS: Incidence data were obtained from the Washington State Cancer Registry using primary site ICD-0-3 codes C54.0-C54.9, excluding histology codes 9140, 9050-9055, 9590-9992. Death data were obtained from Washington State death certificates using the underlying cause of death ICD-9 codes 182.0-182.1, 182.8 (1992-1998), ICD-10 codes C54 (1999-2018).

2016-2018 Washington State Female Residents

Average Annual Incidence and Age-Adjusted Rates

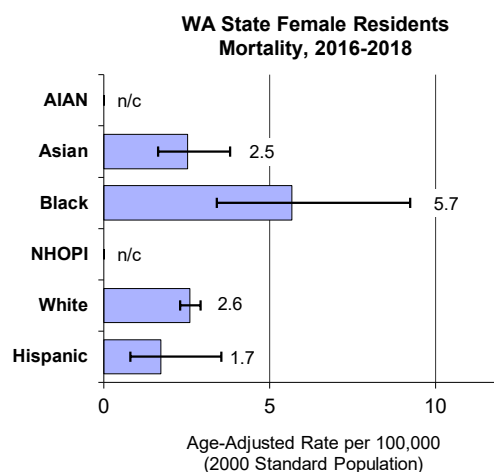
Race*/Ethnicity Group	Washington	
	New Cases Avg/Year	Age-Adjusted Rate 2000 Std Pop
AIAN ¹	18	34.8
Asian	67	18.7
Black	35	30.5
NHOPI ²	17	87.5
White	1,000	26.2
Hispanic	64	26.0



2016-2018 Washington State Female Residents

Average Annual Death and Age-Adjusted Rates

Race*/Ethnicity Group	Washington	
	Deaths Avg/Year	Age-Adjusted Rate 2000 Std Pop
AIAN ¹	n/c	n/c
Asian	9	2.5
Black	7	5.7
NHOPI ²	n/c	n/c
White	103	2.6
Hispanic	4	1.7



* Race groups include single race only, non-Hispanics except for the Hispanic group.

¹ AIAN: American Indian or Alaska Native

² NHOPI: Native Hawaiian or Other Pacific Islander

n/c - Rate and count not calculated when there were less than 10 cases for the period 2016-2018

Figures include in situ and invasive cancers

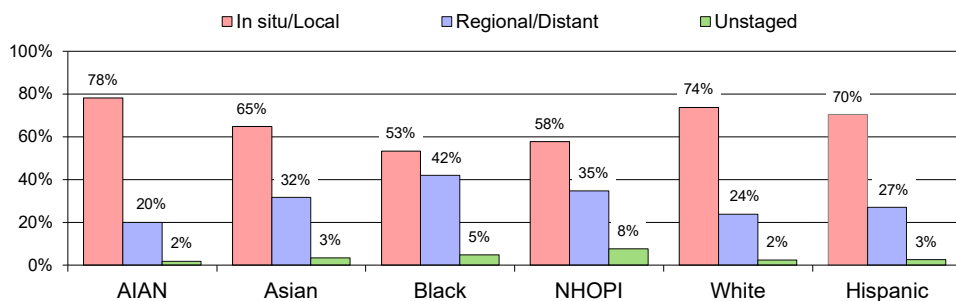
Incidence Data: Washington State Department of Health, Washington State Cancer Registry, released in March 2021.

Mortality Data: Washington State Department of Health, Center for Health Statistics, released in October 2019.

Endometrium

2016-2018 Washington State Female Residents

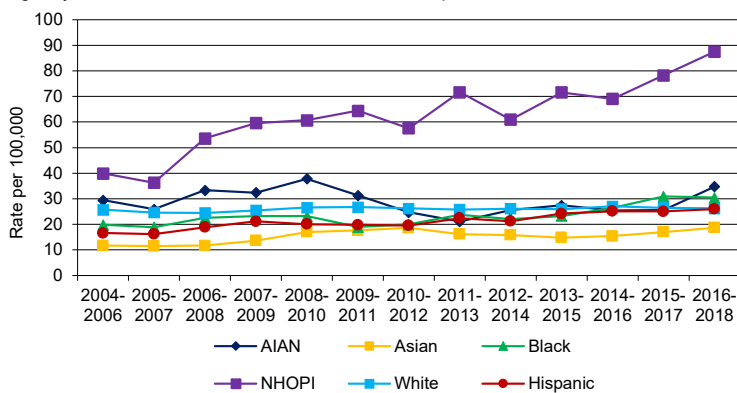
Stage At Diagnosis^{*,1,2}



n/c Total number of cases less than 15

2004-2018 Washington State Female Residents Incidence Rates Trends^{*,1,2}

Age-adjusted rate standardized to 2000 US Standard Population



For endometrial cancer age-adjusted incidence rates have changed as follows.

AIAN: Rates remained level from 2004 to 2018.

Asian: Rates remained level from 2004 to 2018.

Black: Rates increased steadily by 3.4% per year from 2004 to 2018.

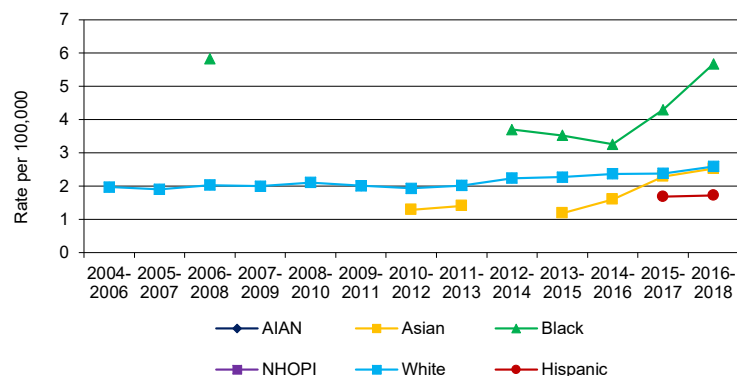
NHOPI: Rates increased sharply by 4.8% per year from 2004 to 2018.

White: Rates remained level from 2004 to 2018.

Hispanic: Rates increased steadily by 3.5% per year from 2004 to 2018.

2004-2018 Washington State Female Residents Mortality Rates Trends^{*,1,2}

Age-adjusted rate standardized to 2000 US Standard Population



For endometrial cancer age-adjusted mortality rates have changed as follows.

AIAN: Trends in rates from 2004 to 2018 could not be assessed due to small numbers of deaths.

Asian: Trends in rates from 2004 to 2018 could not be assessed due to small numbers of deaths.

Black: Trends in rates from 2004 to 2018 could not be assessed due to small numbers of deaths.

NHOPI: Trends in rates from 2004 to 2018 could not be assessed due to small numbers of deaths.

White: Rates increased steadily by 2.2% per year from 2004 to 2018.

Hispanic: Trends in rates from 2004 to 2018 could not be assessed due to small numbers of deaths.

* Rates not calculated or displayed when there were less than 10 cases for the time period.

* Race groups include single race only, non-Hispanics except for the Hispanic group.

¹ AIAN: American Indian or Alaska Native

² NHOPI: Native Hawaiian or Other Pacific Islander

Incidence Data: Washington State Department of Health, Washington State Cancer Registry, released in March 2021.

Mortality Data: Washington State Department of Health, Center for Health Statistics, released in October 2019.

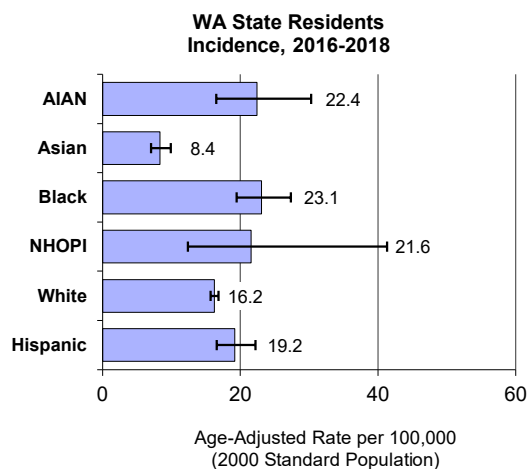
Kidney and Renal Pelvis

DATA DEFINITIONS: Incidence data were obtained from the Washington State Cancer Registry using primary site ICD-0-3 codes C64.9, C65.9, excluding histology codes 9140, 9050-9055, 9590-9992. Death data were obtained from Washington State death certificates using the underlying cause of death ICD-9 codes 189.0, 189.1 (1992-1998), ICD-10 codes C64-C65 (1999-2018).

2016-2018 Washington State Residents

Average Annual Incidence and Age-Adjusted Rates

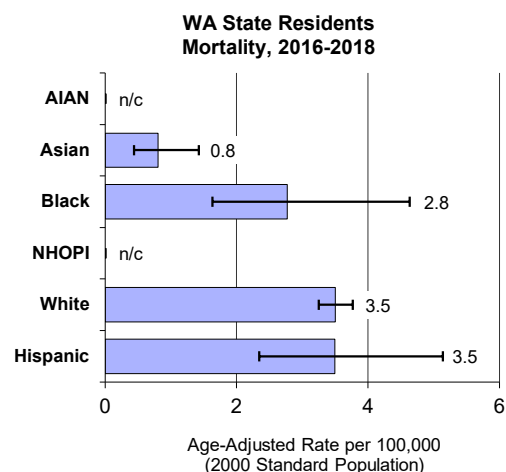
Race*/Ethnicity Group	Washington	
	New Cases Avg/Year	Age-Adjusted Rate 2000 Std Pop
AIAN ¹	19	22.4
Asian	50	8.4
Black	55	23.1
NHOPI ²	7	21.6
White	1,144	16.2
Hispanic	85	19.2



2016-2018 Washington State Residents

Average Annual Death and Age-Adjusted Rates

Race*/Ethnicity Group	Washington	
	Deaths Avg/Year	Age-Adjusted Rate 2000 Std Pop
AIAN ¹	n/c	n/c
Asian	5	0.8
Black	7	2.8
NHOPI ²	n/c	n/c
White	257	3.5
Hispanic	12	3.5



* Race groups include single race only, non-Hispanics except for the Hispanic group.

¹ AIAN: American Indian or Alaska Native

² NHOPI: Native Hawaiian or Other Pacific Islander

n/c - Rate and count not calculated when there were less than 10 cases for the period 2016-2018

Figures include in situ and invasive cancers

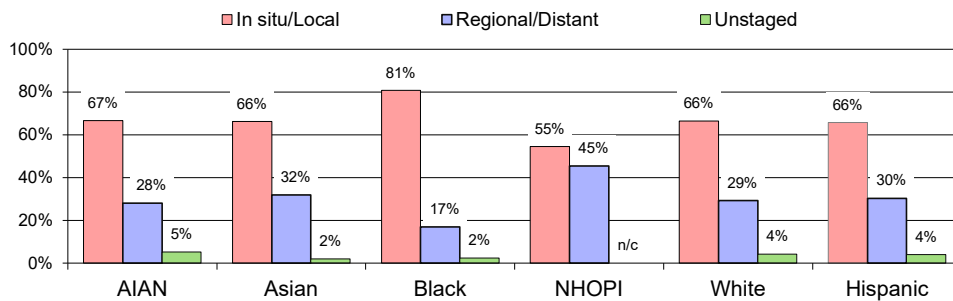
Incidence Data: Washington State Department of Health, Washington State Cancer Registry, released in March 2021.

Mortality Data: Washington State Department of Health, Center for Health Statistics, released in October 2019.

Kidney and Renal Pelvis

2016-2018 Washington State Residents

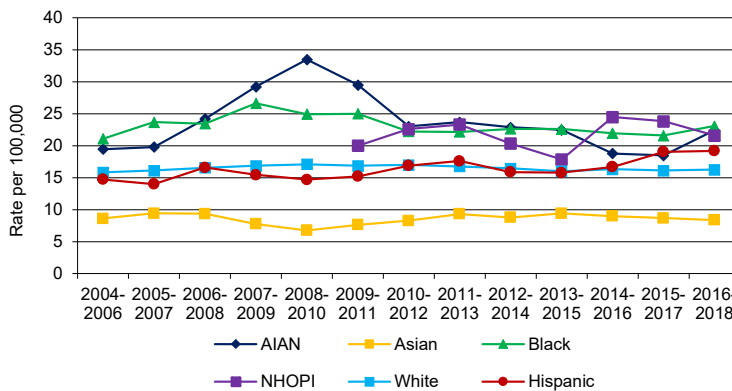
Stage At Diagnosis ^{*,1,2}



n/c Total number of cases < 15

2004-2018 Washington State Residents Incidence Rates Trends ^{*,1,2}

Age-adjusted rate standardized to 2000 US Standard Population



For kidney and renal pelvis cancer age-adjusted incidence rates have changed as follows.

AIAN: Rates remained level from 2004 to 2018.

Asian: Rates remained level from 2004 to 2018.

Black: Rates remained level from 2004 to 2018.

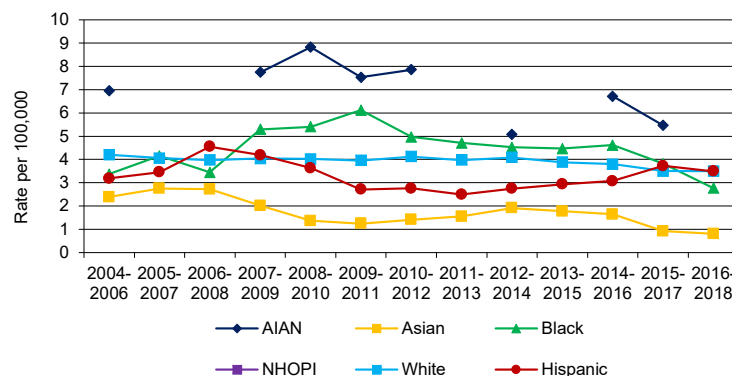
NHOPI: Trends in rates from 2004 to 2018 could not be assessed due to small numbers of new cases.

White: Rates remained level from 2004 to 2018.

Hispanic: Rates increased steadily by 2.4% per year from 2004 to 2018.

2004-2018 Washington State Residents Mortality Rates Trends ^{*,1,2}

Age-adjusted rate standardized to 2000 US Standard Population



For kidney and renal pelvis cancer age-adjusted mortality rates have changed as follows.

AIAN: Trends in rates from 2004 to 2018 could not be assessed due to small numbers of deaths.

Asian: Rates decreased sharply by 6.5% per year from 2004 to 2018.

Black: Rates remained level from 2004 to 2018.

NHOPI: Trends in rates from 2004 to 2018 could not be assessed due to small numbers of deaths.

White: Rates decreased steadily by 1.4% per year from 2004 to 2018.

Hispanic: Rates remained level from 2004 to 2018.

* Rates not calculated or displayed when there were less than 10 cases for the time period.

* Race groups include single race only, non-Hispanics except for the Hispanic group.

¹ AIAN: American Indian or Alaska Native

² NHOPI: Native Hawaiian or Other Pacific Islander

Incidence Data: Washington State Department of Health, Washington State Cancer Registry, released in March 2021.

Mortality Data: Washington State Department of Health, Center for Health Statistics, released in October 2019.

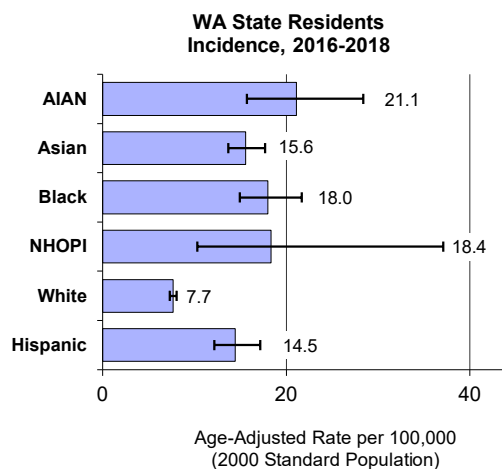
Liver and Intrahepatic Bile Duct

DATA DEFINITIONS: Incidence data were obtained from the Washington State Cancer Registry using primary site ICD-0-3 code C22.0-C22.1, excluding histology codes 9140, 9050-9055, 9590-9992. Death data were obtained from Washington State death certificates using the underlying cause of death ICD-9 codes 155.0-155.2 (1992-1998), ICD-10 codes C22.0-C22.4, C22.7, C22.9 (1999-2018).

2016-2018 Washington State Residents

Average Annual Incidence and Age-Adjusted Rates

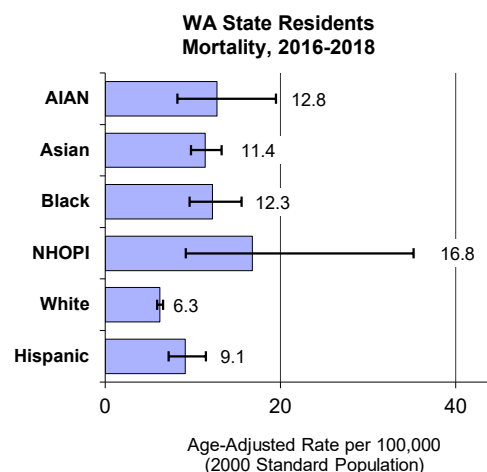
Race*/Ethnicity Group	Washington	
	New Cases Avg/Year	Age-Adjusted Rate 2000 Std Pop
AIAN ¹	21	21.1
Asian	89	15.6
Black	45	18.0
NHOPI ²	6	18.4
White	602	7.7
Hispanic	59	14.5



2016-2018 Washington State Residents

Average Annual Death and Age-Adjusted Rates

Race*/Ethnicity Group	Washington	
	Deaths Avg/Year	Age-Adjusted Rate 2000 Std Pop
AIAN ¹	11	12.8
Asian	64	11.4
Black	28	12.3
NHOPI ²	6	16.8
White	479	6.3
Hispanic	33	9.1



* Race groups include single race only, non-Hispanics except for the Hispanic group.

¹ AIAN: American Indian or Alaska Native

² NHOPI: Native Hawaiian or Other Pacific Islander

n/c - Rate and count not calculated when there were less than 10 cases for the time period 2016-2018

Figures include in situ and invasive cancers

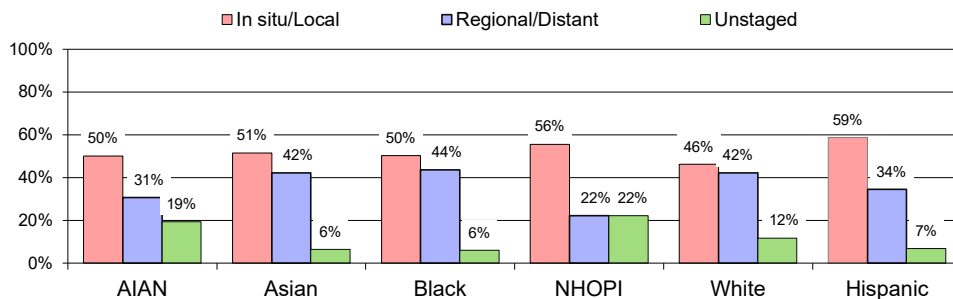
Incidence Data: Washington State Department of Health, Washington State Cancer Registry, released in March 2021.

Mortality Data: Washington State Department of Health, Center for Health Statistics, released in October 2019.

Liver and Intrahepatic Bile Duct

2016-2018 Washington State Residents

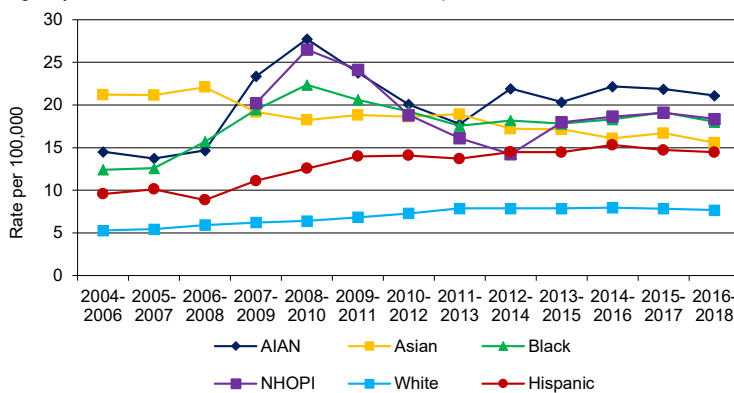
Stage At Diagnosis^{*,1,2}



n/c Total number of cases < 15

2004-2018 Washington State Residents Incidence Rates Trends^{*,1,2}

Age-adjusted rate standardized to 2000 US Standard Population



For liver and intrahepatic bile duct cancer age-adjusted incidence rates have changed as follows.

AIAN: Rates remained level from 2004 to 2018.

Asian: Rates decreased steadily by 2.3% per year from 2004 to 2018.

Black: Rates increased sharply by 14.6% per year from 2004 to 2009; remained level since 2009.

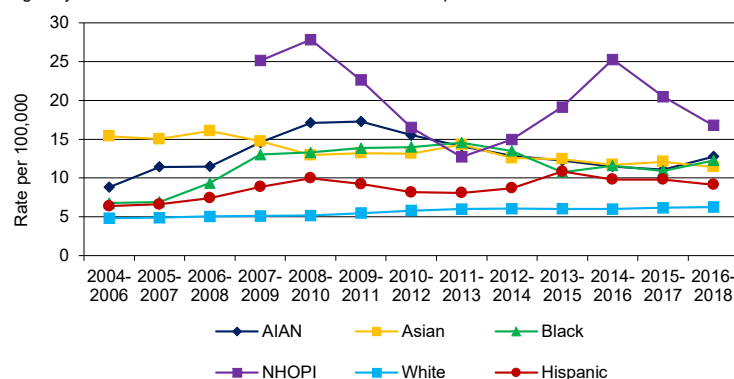
NHOPI: Trends in rates from 2004 to 2018 could not be assessed due to small numbers of new cases.

White: Rates increased sharply by 5.5% per year from 2004 to 2013; remained level since 2013.

Hispanic: Rates increased steadily by 2.9% per year from 2004 to 2018.

2004-2018 Washington State Residents Mortality Rates Trends^{*,1,2}

Age-adjusted rate standardized to 2000 US Standard Population



For liver and intrahepatic bile duct cancer age-adjusted mortality rates have changed as follows.

AIAN: Rates remained level from 2004 to 2018.

Asian: Rates decreased steadily by 2.6% per year from 2004 to 2018.

Black: Rates remained level from 2004 to 2018.

NHOPI: Trends in rates from 2004 to 2018 could not be assessed due to small numbers of deaths.

White: Rates increased steadily by 2.3% per year from 2004 to 2018.

Hispanic: Rates remained level from 2004 to 2018.

* Rates not calculated or displayed when there were less than 10 cases for the time period.

* Race groups include single race only, non-Hispanics except for the Hispanic group.

¹ AIAN: American Indian or Alaska Native

² NHOPI: Native Hawaiian or Other Pacific Islander

Incidence Data: Washington State Department of Health, Washington State Cancer Registry, released in March 2021.

Mortality Data: Washington State Department of Health, Center for Health Statistics, released in October 2019.

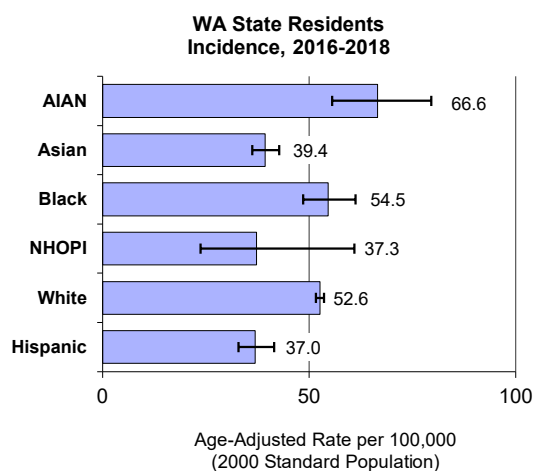
Lung and Bronchus

DATA DEFINITIONS: Incidence data were obtained from the Washington State Cancer Registry using primary site ICD-0-3 codes C34.0-C34.9, excluding histology codes 9140, 9050-9055, 9590-9992. Death data were obtained from Washington State death certificates using the underlying cause of death ICD-9 codes 162.2-162.9 (1992-1998), ICD-10 code C34 (1999-2018).

2016-2018 Washington State Residents

Average Annual Incidence and Age-Adjusted Rates

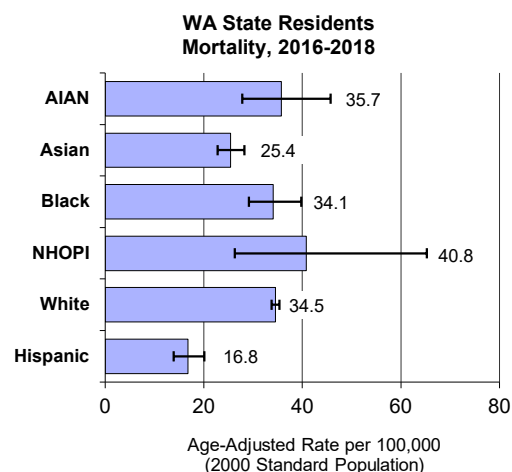
Race*/Ethnicity Group	Washington	
	New Cases Avg/Year	Age-Adjusted Rate 2000 Std Pop
AIAN ¹	54	66.6
Asian	212	39.4
Black	115	54.5
NHOPI ²	10	37.3
White	3,901	52.6
Hispanic	123	37.0



2016-2018 Washington State Residents

Average Annual Death and Age-Adjusted Rates

Race*/Ethnicity Group	Washington	
	Deaths Avg/Year	Age-Adjusted Rate 2000 Std Pop
AIAN ¹	29	35.7
Asian	128	25.4
Black	65	34.1
NHOPI ²	11	40.8
White	2,543	34.5
Hispanic	50	16.8



* Race groups include single race only, non-Hispanics except for the Hispanic group.

¹ AIAN: American Indian or Alaska Native

² NHOPI: Native Hawaiian or Other Pacific Islander

n/c - Rate and count not calculated when there were less than 10 cases for the period 2016-2018

Figures include in situ and invasive cancers

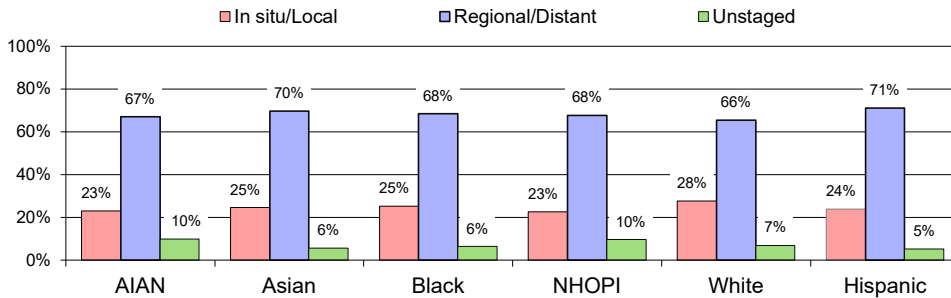
Incidence Data: Washington State Department of Health, Washington State Cancer Registry, released in March 2021.

Mortality Data: Washington State Department of Health, Center for Health Statistics, released in October 2019.

Lung and Bronchus

2016-2018 Washington State Residents

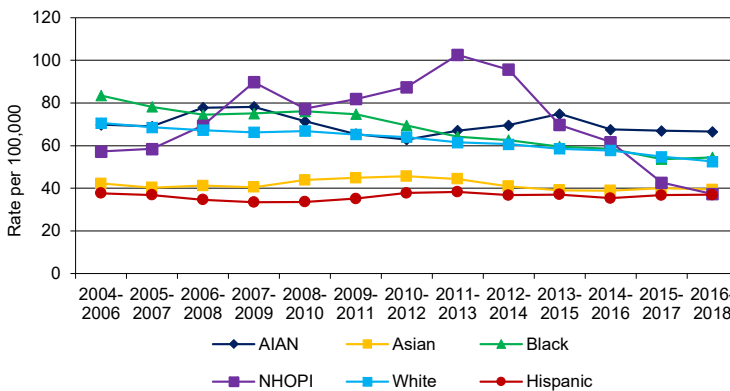
Stage At Diagnosis^{*,1,2}



n/c Total number of cases < 15

2004-2018 Washington State Residents Incidence Rates Trends^{*,1,2}

Age-adjusted rate standardized to 2000 US Standard Population

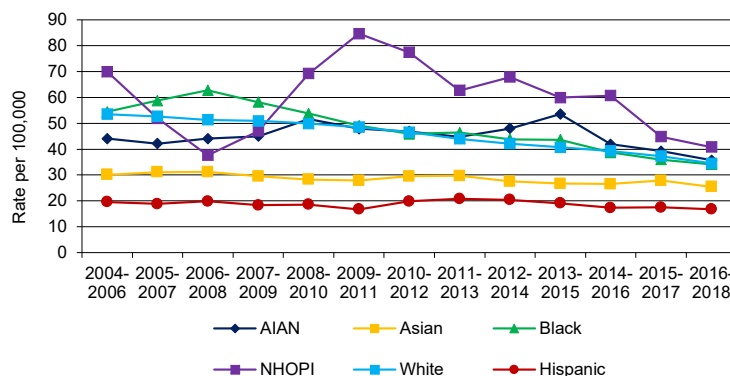


For lung and bronchus cancer age-adjusted incidence rates have changed as follows.

- AIAN:** Rates remained level from 2004 to 2018.
- Asian:** Rates remained level from 2004 to 2018.
- Black:** Rates decreased steadily by 3.5% per year from 2004 to 2018.
- NHOPI:** Rates remained level from 2004 to 2012; decreased sharply by 20.0% per year since 2012.
- White:** Rates decreased steadily by 1.8% per year from 2004 to 2018.
- Hispanic:** Rates remained level from 2004 to 2018.

2004-2018 Washington State Residents Mortality Rates Trends^{*,1,2}

Age-adjusted rate standardized to 2000 US Standard Population



For lung and bronchus cancer age-adjusted mortality rates have changed as follows.

- AIAN:** Rates remained level from 2004 to 2018.
- Asian:** Rates decreased steadily by 1.5% per year from 2004 to 2018.
- Black:** Rates remained level from 2004 to 2006; decreased sharply by 5.4% per year since 2006.
- NHOPI:** Rates remained level from 2004 to 2018.
- White:** Rates decreased steadily by 1.8% per year from 2004 to 2010; decreased sharply by 4.8% per year since 2010.
- Hispanic:** Rates remained level from 2004 to 2018.

* Rates not calculated or displayed when there were less than 10 cases for the time period.

* Race groups include single race only, non-Hispanics except for the Hispanic group.

¹ AIAN: American Indian or Alaska Native

² NHOPI: Native Hawaiian or Other Pacific Islander

Incidence Data: Washington State Department of Health, Washington State Cancer Registry, released in March 2021.

Mortality Data: Washington State Department of Health, Center for Health Statistics, released in October 2019.

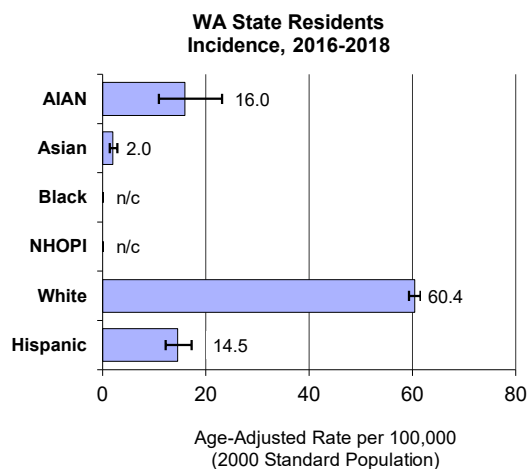
Melanoma of the Skin

DATA DEFINITIONS: Incidence data were obtained from the Washington State Cancer Registry using primary site ICD-0-3 codes C44.0-C44.9, including only histology codes 8720-8790. Death data were obtained from Washington State death certificates using the underlying cause of death ICD-9 codes 172.0-172.9 (1992-1998), ICD-10 code C43 (1999-2018).

2016-2018 Washington State Residents

Average Annual Incidence and Age-Adjusted Rates

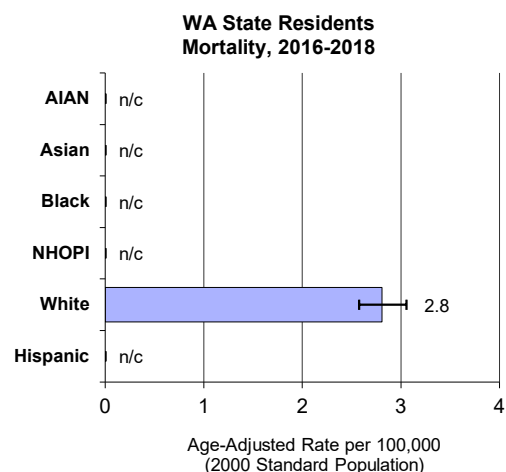
Race*/Ethnicity Group	Washington	
	New Cases Avg/Year	Age-Adjusted Rate 2000 Std Pop
AIAN ¹	13	16.0
Asian	12	2.0
Black	n/c	n/c
NHOPI ²	n/c	n/c
White	4,121	60.4
Hispanic	62	14.5



2016-2018 Washington State Residents

Average Annual Death and Age-Adjusted Rates

Race*/Ethnicity Group	Washington	
	Deaths Avg/Year	Age-Adjusted Rate 2000 Std Pop
AIAN ¹	n/c	n/c
Asian	n/c	n/c
Black	n/c	n/c
NHOPI ²	n/c	n/c
White	197	2.8
Hispanic	n/c	n/c



* Race groups include single race only, non-Hispanics except for the Hispanic group.

¹ AIAN: American Indian or Alaska Native

² NHOPI: Native Hawaiian or Other Pacific Islander

n/c - Rate and count not calculated when there were less than 10 cases for the period 2016-2018

Figures include in situ and invasive cancers

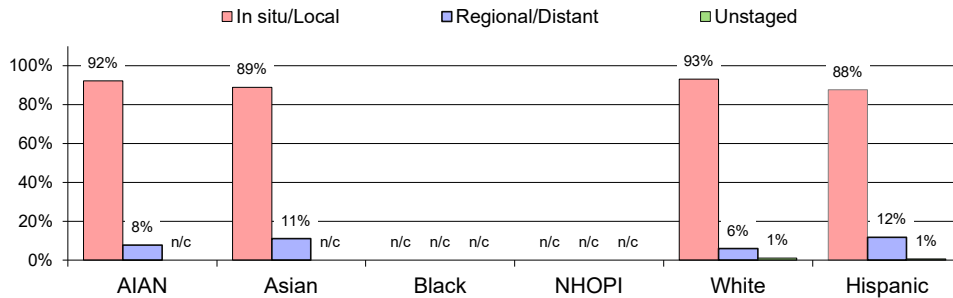
Incidence Data: Washington State Department of Health, Washington State Cancer Registry, released in March 2021.

Mortality Data: Washington State Department of Health, Center for Health Statistics, released in October 2019.

Melanoma of the Skin

2016-2018 Washington State Residents

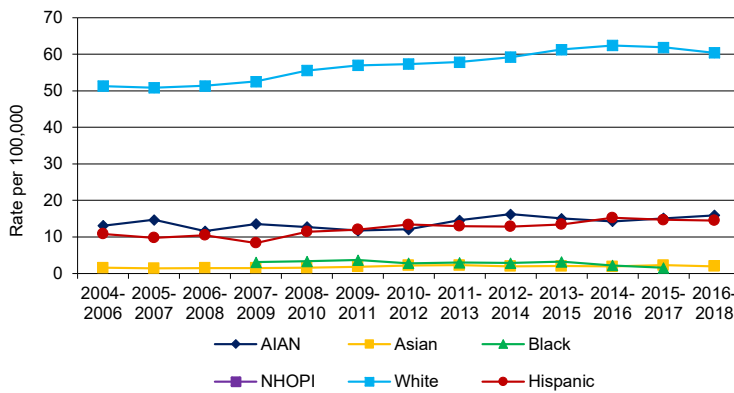
Stage At Diagnosis^{*,1,2}



n/c Total number of cases < 15

2004-2018 Washington State Residents Incidence Rates Trends^{*,1,2}

Age-adjusted rate standardized to 2000 US Standard Population



For melanoma of the skin cancer age-adjusted incidence rates have changed as follows.

AIAN: Rates remained level from 2004 to 2018.

Asian: Rates remained level from 2004 to 2018.

Black: Trends in rates from 2004 to 2018 could not be assessed due to small numbers of new cases.

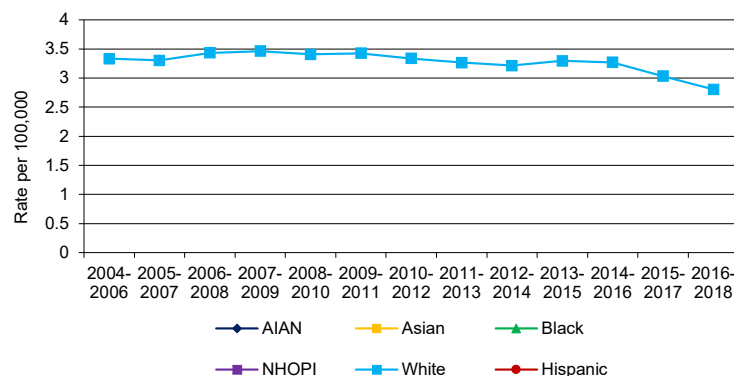
NHOPI: Trends in rates from 2004 to 2018 could not be assessed due to small numbers of new cases.

White: Rates increased steadily by 2.1% per year from 2004 to 2016; remained level since 2016.

Hispanic: Rates increased steadily by 3.3% per year from 2004 to 2018.

2004-2018 Washington State Residents Mortality Rates Trends^{*,1,2}

Age-adjusted rate standardized to 2000 US Standard Population



For melanoma of the skin cancer age-adjusted mortality rates have changed as follows.

AIAN: Trends in rates from 2004 to 2018 could not be assessed due to small numbers of deaths.

Asian: Trends in rates from 2004 to 2018 could not be assessed due to small numbers of deaths.

Black: Trends in rates from 2004 to 2018 could not be assessed due to small numbers of deaths.

NHOPI: Trends in rates from 2004 to 2018 could not be assessed due to small numbers of deaths.

White: Rates remained level from 2004 to 2018.

Hispanic: Trends in rates from 2004 to 2018 could not be assessed due to small numbers of deaths.

* Rates not calculated or displayed when there were less than 10 cases for the time period.

* Race groups include single race only, non-Hispanics except for the Hispanic group.

¹ AIAN: American Indian or Alaska Native

² NHOPI: Native Hawaiian or Other Pacific Islander

Incidence Data: Washington State Department of Health, Washington State Cancer Registry, released in March 2021.

Mortality Data: Washington State Department of Health, Center for Health Statistics, released in October 2019.

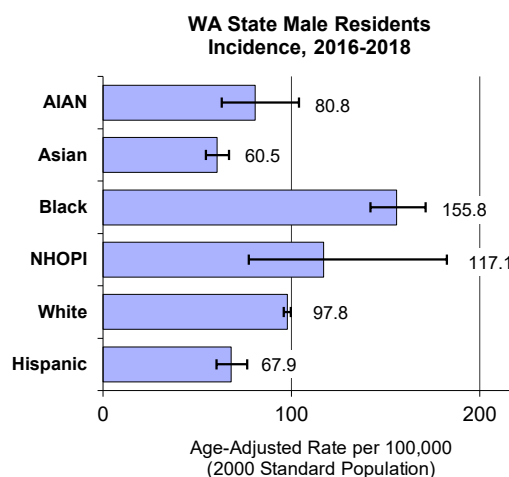
Prostate

DATA DEFINITIONS: Incidence data were obtained from the Washington State Cancer Registry using primary site ICD-0-3 code C61.9, excluding histology codes 9140, 9050-9055, 9590-9992. Death data were obtained from Washington State death certificates using the underlying cause of death ICD-9 code 185 (1992-1998), ICD-10 code C61 (1999-2018).

2016-2018 Washington State Male Residents

Average Annual Incidence and Age-Adjusted Rates

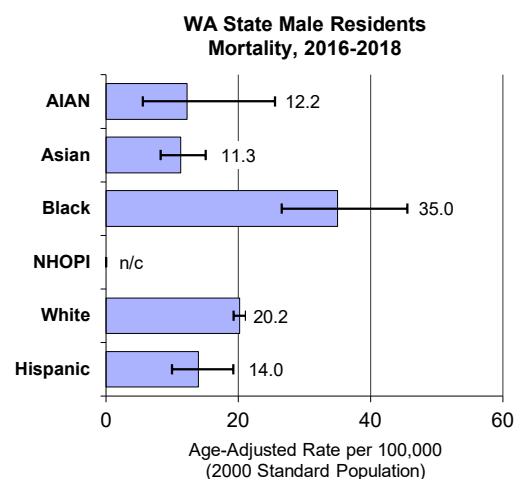
Race*/Ethnicity Group	Washington	
	New Cases Avg/Year	Age-Adjusted Rate 2000 Std Pop
AIAN ¹	31	80.8
Asian	150	60.5
Black	193	155.8
NHOPI ²	14	117.1
White	3,692	97.8
Hispanic	123	67.9



2016-2018 Washington State Male Residents

Average Annual Death and Age-Adjusted Rates

Race*/Ethnicity Group	Washington	
	Deaths Avg/Year	Age-Adjusted Rate 2000 Std Pop
AIAN ¹	4	12.2
Asian	17	11.3
Black	25	35.0
NHOPI ²	n/c	n/c
White	633	20.2
Hispanic	16	14.0



* Race groups include single race only, non-Hispanics except for the Hispanic group.

¹ AIAN: American Indian or Alaska Native

² NHOPI: Native Hawaiian or Other Pacific Islander

n/c - Rate and count not calculated when there were less than 10 cases for the period 2016-2018

Figures include in situ and invasive cancers

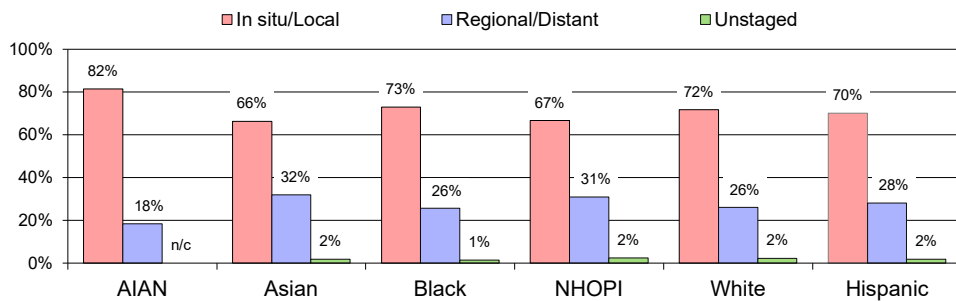
Incidence Data: Washington State Department of Health, Washington State Cancer Registry, released in March 2021.

Mortality Data: Washington State Department of Health, Center for Health Statistics, released in October 2019.

Prostate

2016-2018 Washington State Male Residents

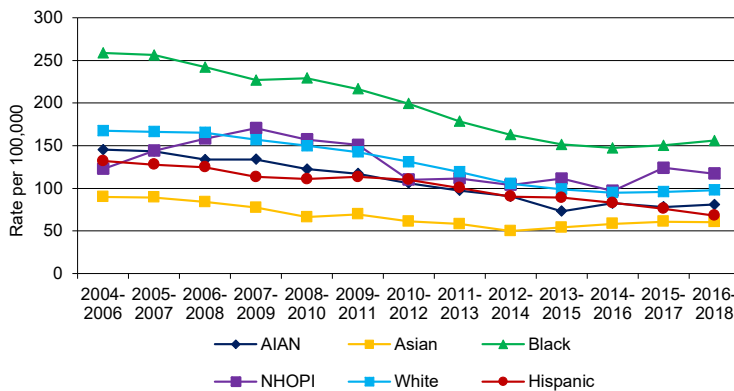
Stage At Diagnosis ^{*,1,2}



n/c Total number of cases < 15

2004-2018 Washington State Male Residents Incidence Rates Trends ^{*,1,2}

Age-adjusted rate standardized to 2000 US Standard Population



For prostate cancer age-adjusted incidence rates have changed as follows.

AIAN: Rates decreased sharply by 5.8% per year from 2004 to 2018.

Asian: Rates decreased steadily by 3.5% per year from 2004 to 2018.

Black: Rates decreased sharply by 4.7% per year from 2004 to 2018.

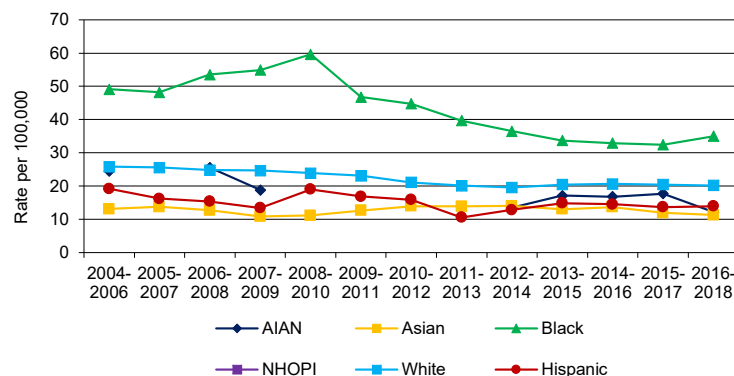
NHOPI: Rates remained level from 2004 to 2018.

White: Rates decreased steadily by 2.6% per year from 2004 to 2010; decreased sharply by 10.6% per year from 2010 to 2014; remained level since 2014.

Hispanic: Rates decreased sharply by 5.1% per year from 2004 to 2018.

2004-2018 Washington State Male Residents Mortality Rates Trends ^{*,1,2}

Age-adjusted rate standardized to 2000 US Standard Population



For prostate cancer age-adjusted mortality rates have changed as follows.

AIAN: Trends in rates from 2004 to 2018 could not be assessed due to small numbers of deaths.

Asian: Rates remained level from 2004 to 2018.

Black: Rates decreased steadily by 3.6% per year from 2004 to 2018.

NHOPI: Trends in rates from 2004 to 2018 could not be assessed due to small numbers of deaths.

White: Rates remained level from 2004 to 2009; remained level from 2009 to 2012; remained level since 2012.

Hispanic: Rates remained level from 2004 to 2018.

* Rates not calculated or displayed when there were less than 10 cases for the time period.

* Race groups include single race only, non-Hispanics except for the Hispanic group.

¹ AIAN: American Indian or Alaska Native

² NHOPI: Native Hawaiian or Other Pacific Islander

Incidence Data: Washington State Department of Health, Washington State Cancer Registry, released in March 2021.

Mortality Data: Washington State Department of Health, Center for Health Statistics, released in October 2019.

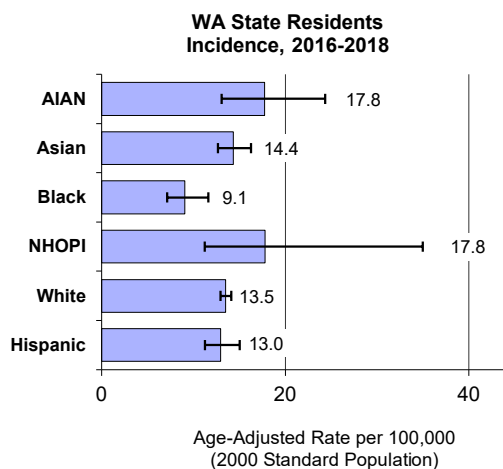
Thyroid

DATA DEFINITIONS: Incidence data were obtained from the Washington State Cancer Registry using primary site ICD-0-3 code C73.9, excluding histology codes 9140, 9050-9055, 9590-9992. Death data were obtained from Washington State death certificates using the underlying cause of death ICD-9 code 193 (1992-1998), ICD-10 code C73 (1999-2018).

2016-2018 Washington State Residents

Average Annual Incidence and Age-Adjusted Rates

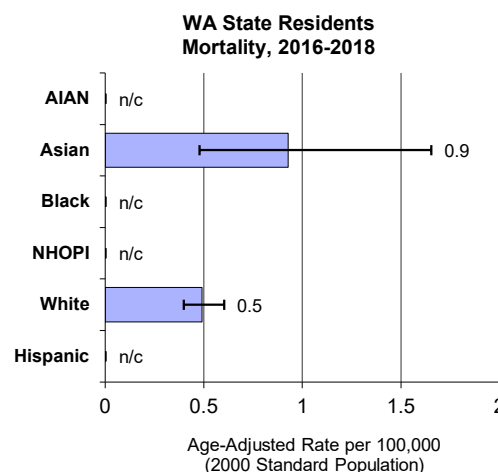
Race*/Ethnicity Group	Washington	
	New Cases Avg/Year	Age-Adjusted Rate 2000 Std Pop
AIAN ¹	17	17.8
Asian	90	14.4
Black	26	9.1
NHOPI ²	8	17.8
White	771	13.5
Hispanic	87	13.0



2016-2018 Washington State Residents

Average Annual Death and Age-Adjusted Rates

Race*/Ethnicity Group	Washington	
	Deaths Avg/Year	Age-Adjusted Rate 2000 Std Pop
AIAN ¹	n/c	n/c
Asian	4	0.9
Black	n/c	n/c
NHOPI ²	n/c	n/c
White	35	0.5
Hispanic	n/c	n/c



* Race groups include single race only, non-Hispanics except for the Hispanic group.

¹ AIAN: American Indian or Alaska Native

² NHOPI: Native Hawaiian or Other Pacific Islander

n/c - Rate and count not calculated when there were less than 10 cases for the period 2016-2018

Figures include in situ and invasive cancers

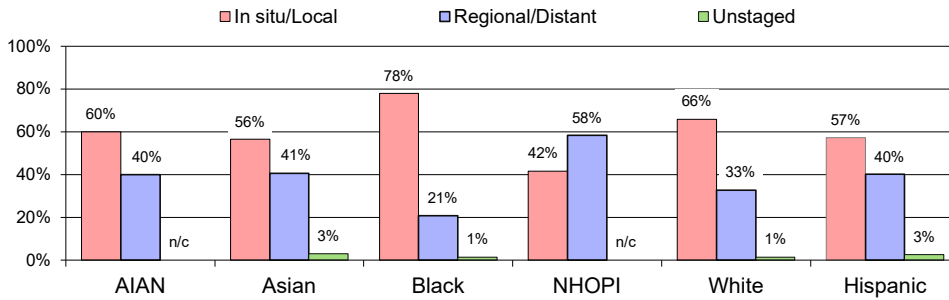
Incidence Data: Washington State Department of Health, Washington State Cancer Registry, released in March 2021.

Mortality Data: Washington State Department of Health, Center for Health Statistics, released in October 2019.

Thyroid

2016-2018 Washington State Residents

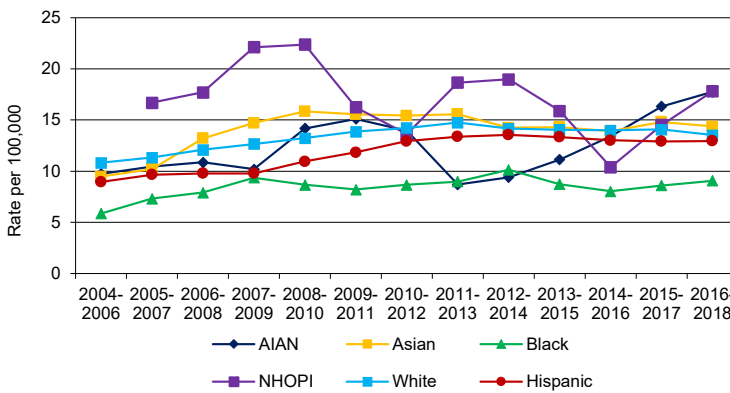
Stage At Diagnosis^{*,1,2}



n/c Total number of cases < 15

2004-2018 Washington State Residents Incidence Rates Trends^{*,1,2}

Age-adjusted rate standardized to 2000 US Standard Population

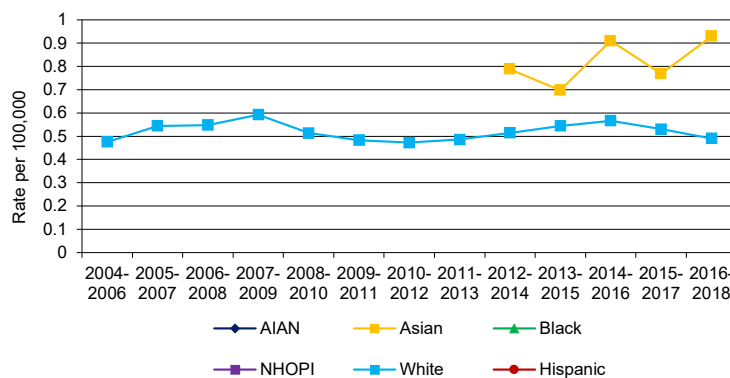


For thyroid cancer age-adjusted incidence rates have changed as follows.

- AIAN:** Rates remained level from 2004 to 2018.
- Asian:** Rates increased sharply by 19.4% per year from 2004 to 2008; remained level since 2008.
- Black:** Rates remained level from 2004 to 2018.
- NHOPI:** Trends in rates from 2004 to 2018 could not be assessed due to small numbers of new cases.
- White:** Rates increased sharply by 5.6% per year from 2004 to 2011; remained level since 2011.
- Hispanic:** Rates increased sharply by 7.3% per year from 2004 to 2012; remained level since 2012.

2004-2018 Washington State Residents Mortality Rates Trends^{*,1,2}

Age-adjusted rate standardized to 2000 US Standard Population



For thyroid cancer age-adjusted mortality rates have changed as follows.

- AIAN:** Trends in rates from 2004 to 2018 could not be assessed due to small numbers of deaths.
- Asian:** Trends in rates from 2004 to 2018 could not be assessed due to small numbers of deaths.
- Black:** Trends in rates from 2004 to 2018 could not be assessed due to small numbers of deaths.
- NHOPI:** Trends in rates from 2004 to 2018 could not be assessed due to small numbers of deaths.
- White:** Rates remained level from 2004 to 2018.
- Hispanic:** Trends in rates from 2004 to 2018 could not be assessed due to small numbers of deaths.

* Rates not calculated or displayed when there were less than 10 cases for the time period.

* Race groups include single race only, non-Hispanics except for the Hispanic group.

¹ AIAN: American Indian or Alaska Native

² NHOPI: Native Hawaiian or Other Pacific Islander

Incidence Data: Washington State Department of Health, Washington State Cancer Registry, released in March 2021.

Mortality Data: Washington State Department of Health, Center for Health Statistics, released in October 2019.