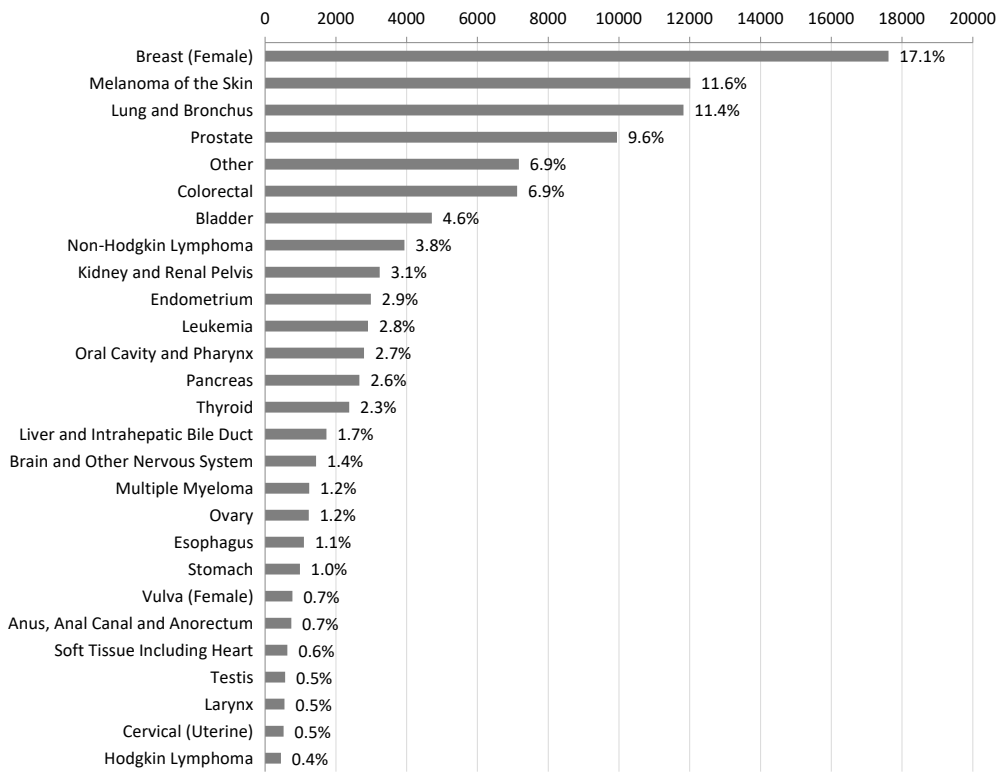


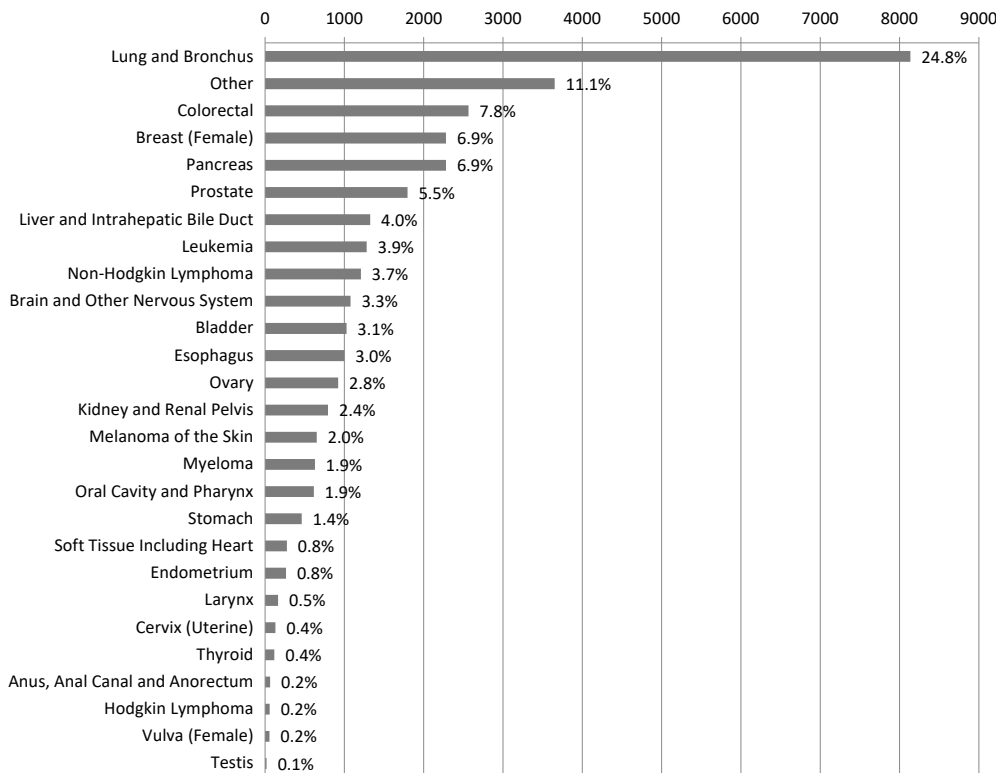
Cancer By
Race and Ethnicity
By Site

Percent Distribution of Cancer

2014-2016 Cancer Incidence of Washington State Residents White single race only, non-Hispanic

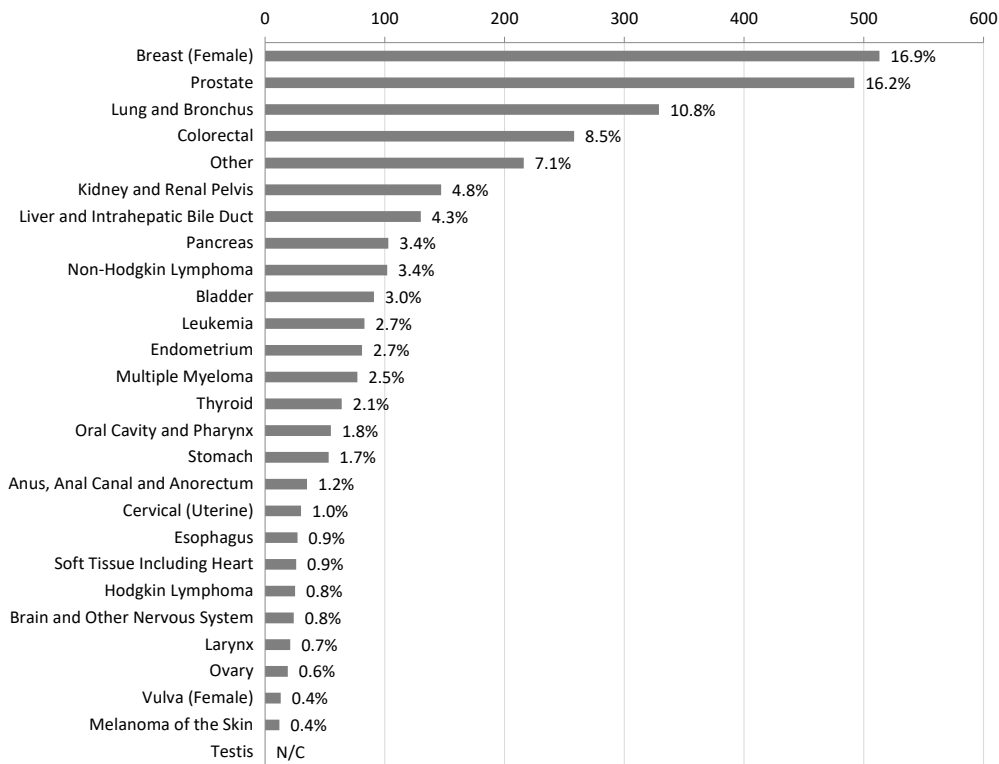


2014-2016 Cancer Mortality of Washington State Residents White single race only, non-Hispanic

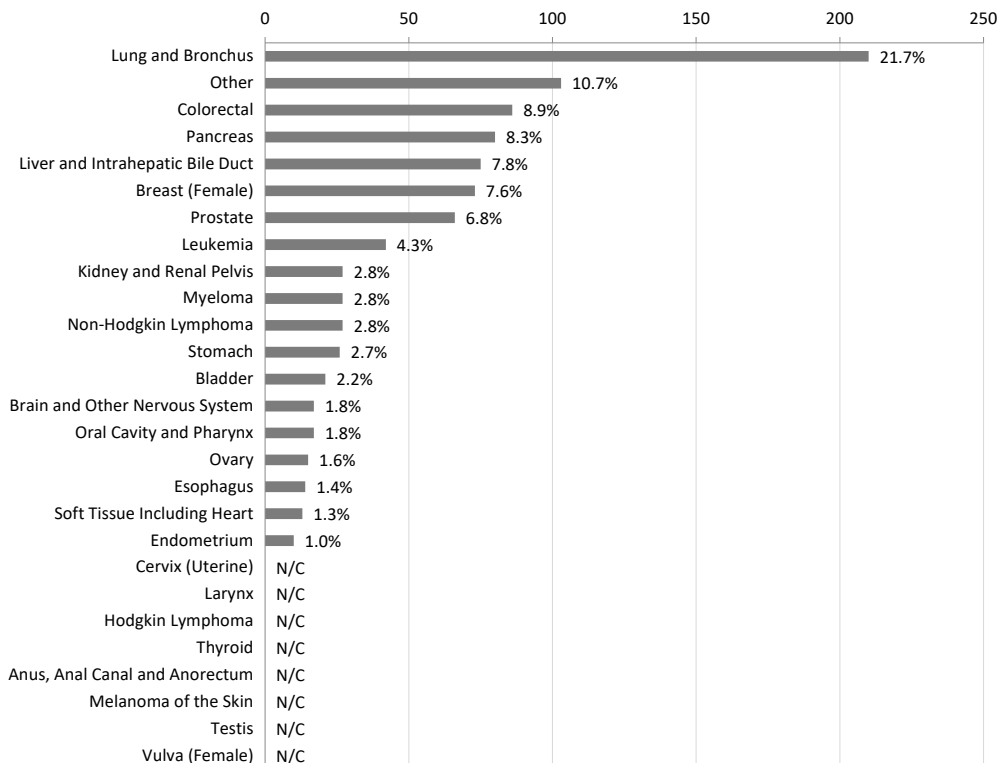


Percent Distribution of Cancer

2014-2016 Cancer Incidence of Washington State Residents Black single race only, non-Hispanic



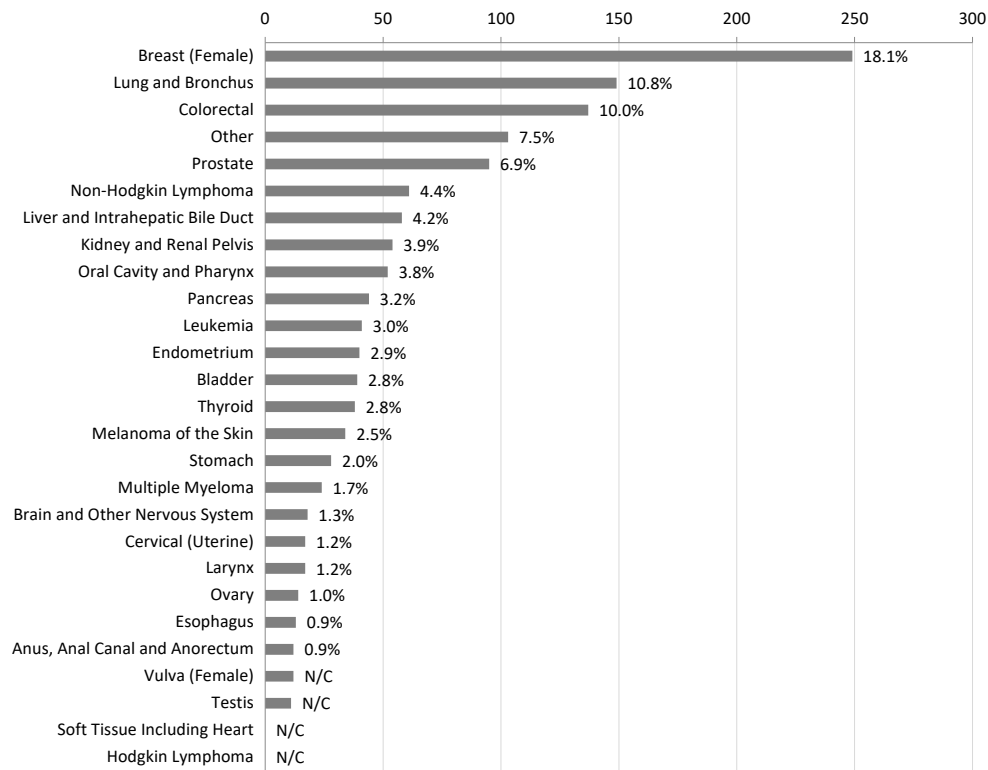
2014-2016 Cancer Mortality of Washington State Residents Black single race only, non-Hispanic



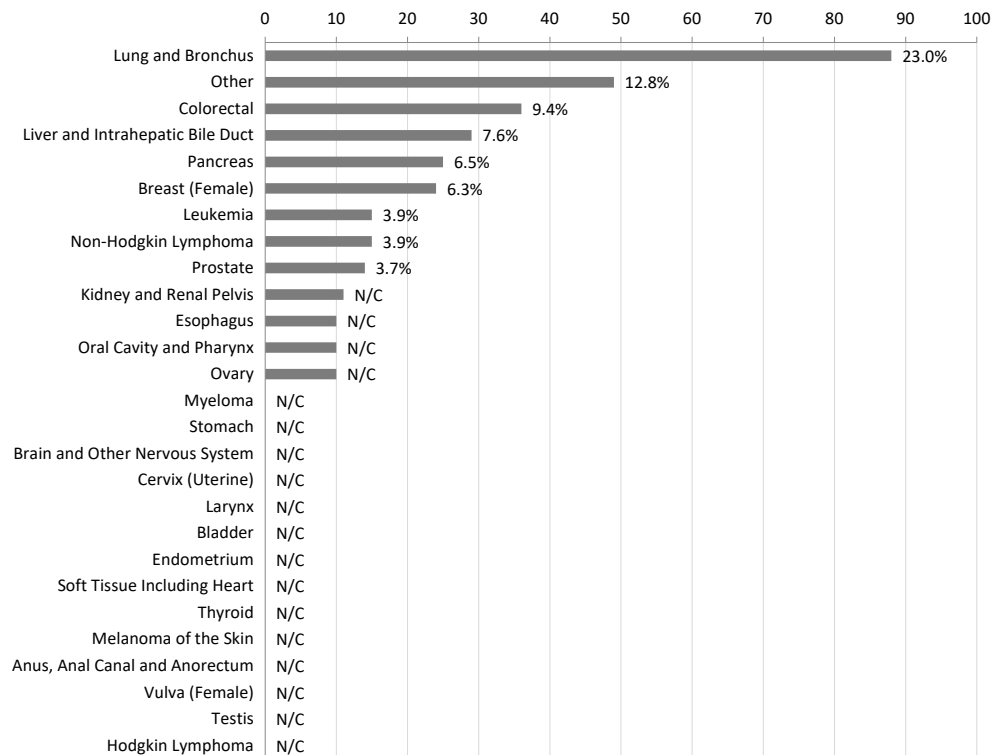
N/C: not calculated because the number of cases less than 10

Percent Distribution of Cancer

2014-2016 Cancer Incidence of Washington State Residents American Indian/Alaska Native single race only, non-Hispanic



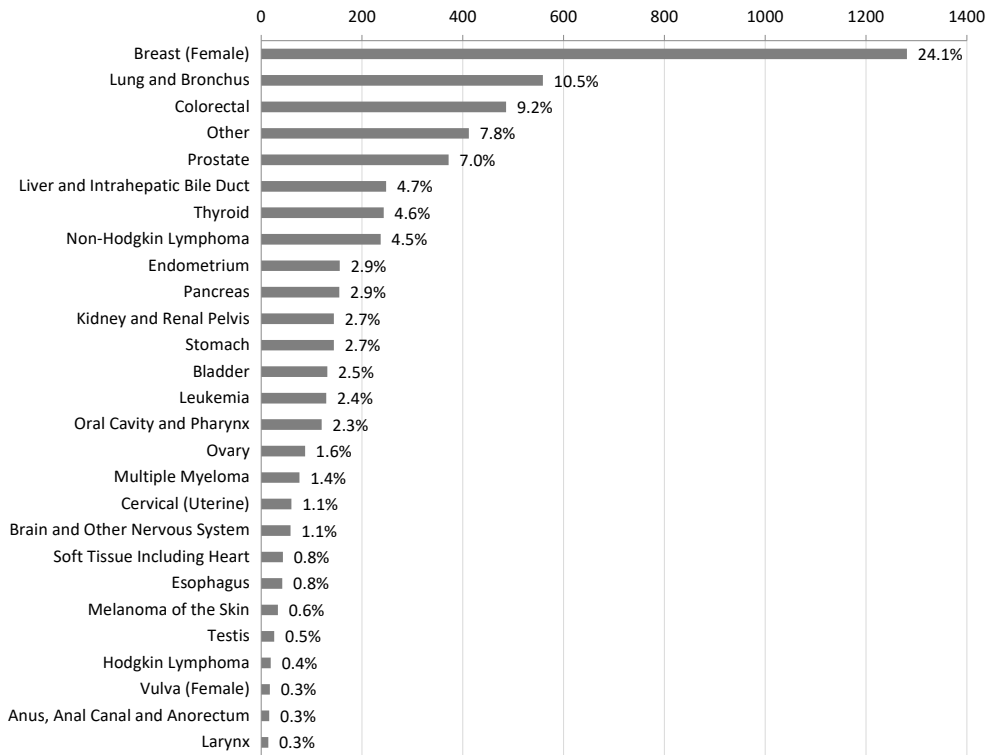
2014-2016 Cancer Mortality of Washington State Residents American Indian/Alaska Native single race only, non-Hispanic



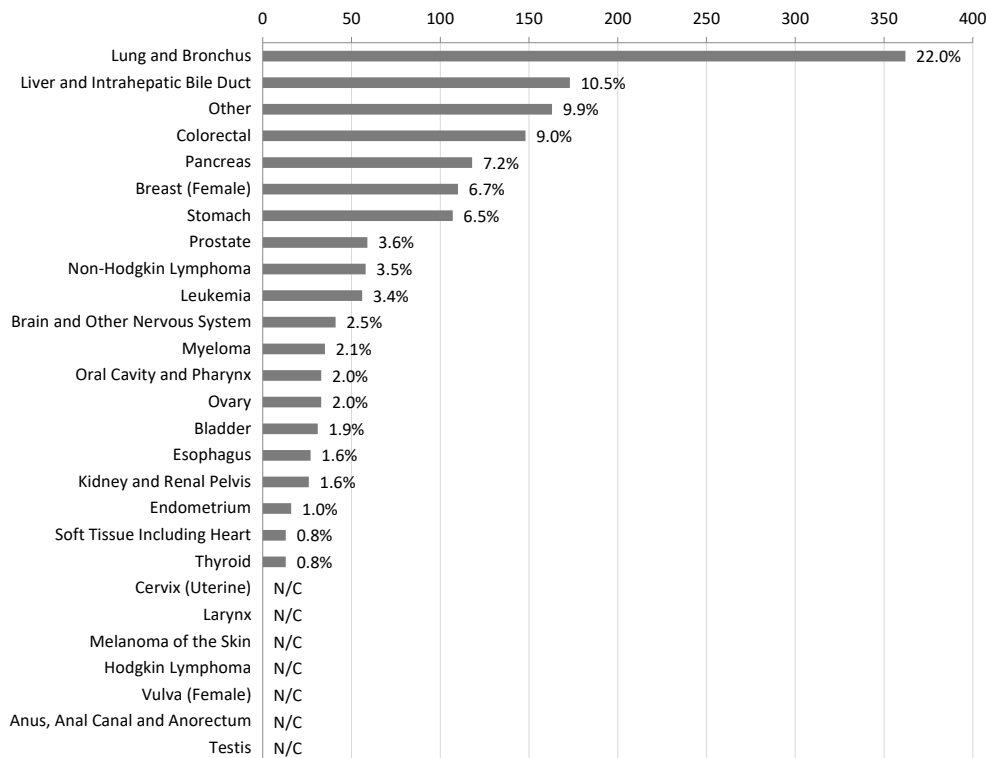
N/C: not calculated because the number of cases less than 10

Percent Distribution of Cancer

2014-2016 Cancer Incidence, Washington State Residents Asian single race only, non-Hispanic



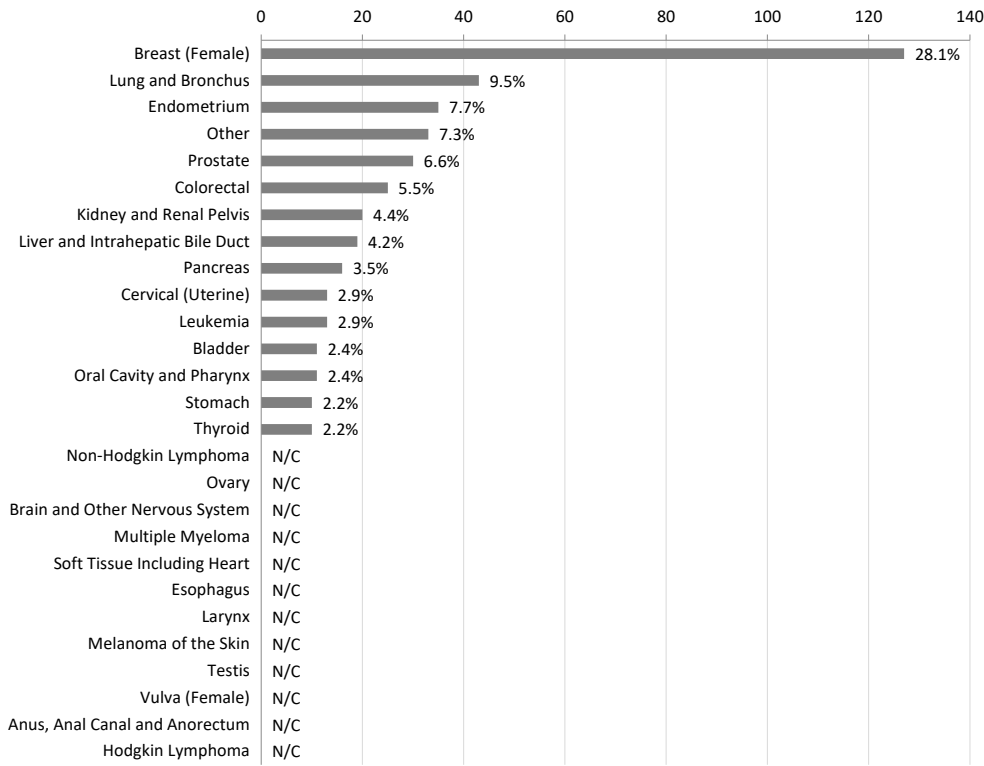
2014-2016 Cancer Mortality of Washington State Residents Asian single race only, non-Hispanic



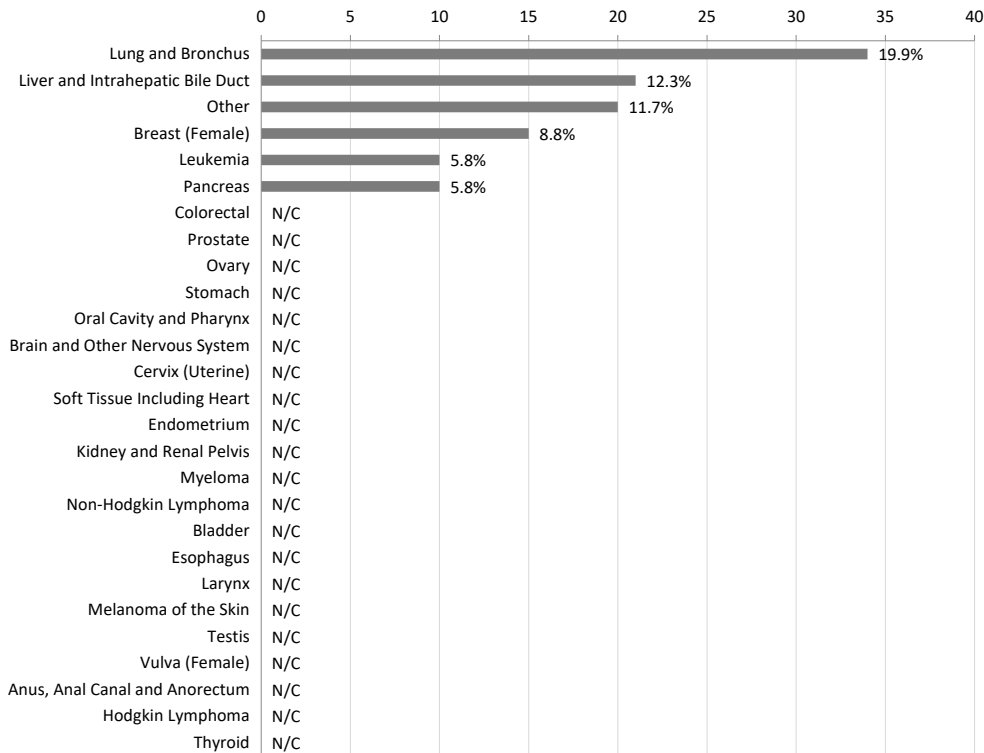
N/C: not calculated because the number of cases less than 10

Percent Distribution of Cancer

2014-2016 Cancer Incidence, Washington State Residents Native Hawaiian or Pacific Islander single race only, non-Hispanic



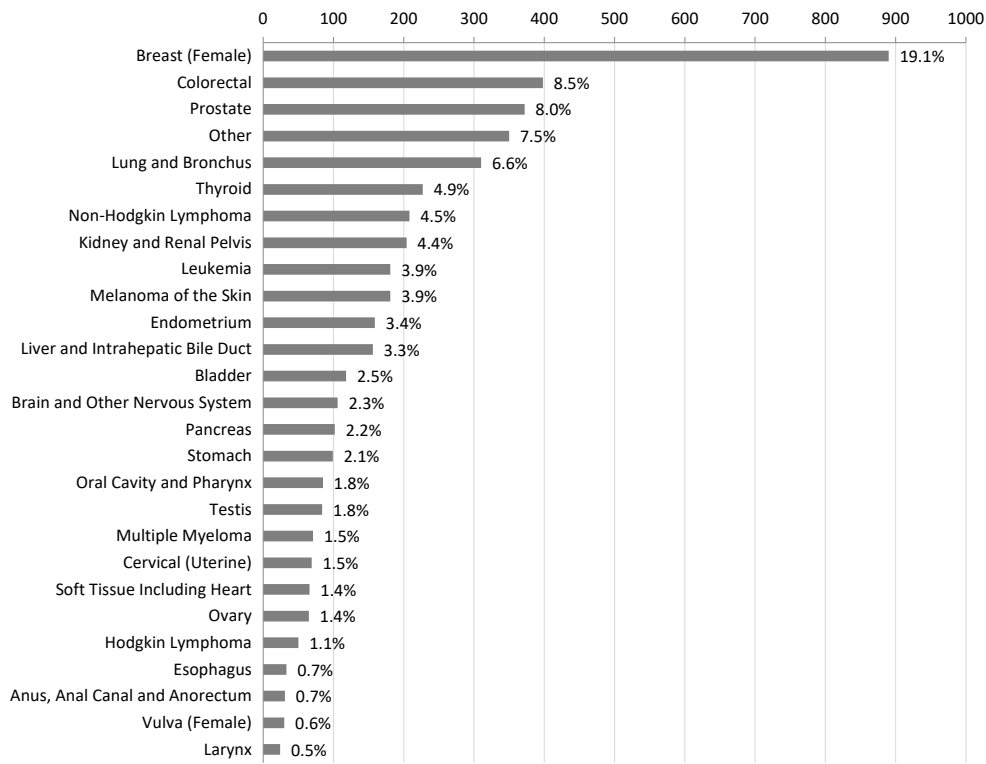
2014-2016 Cancer Mortality of Washington State Residents Native Hawaiian or Pacific Islander single race only, non-Hispanic



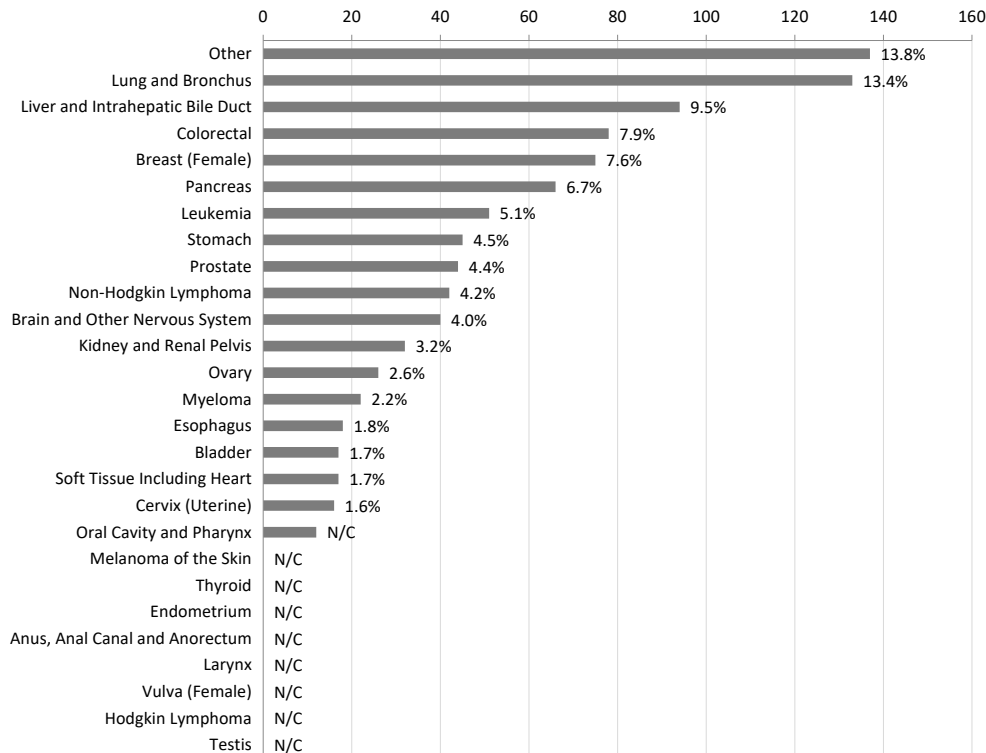
N/C: not calculated because the number of cases less than 10

Percent Distribution of Cancer

2014-2016 Cancer Incidence, Washington State Residents Hispanic



2014-2016 Cancer Mortality of Washington State Residents Hispanic



N/C: not calculated because the number of cases less than 10

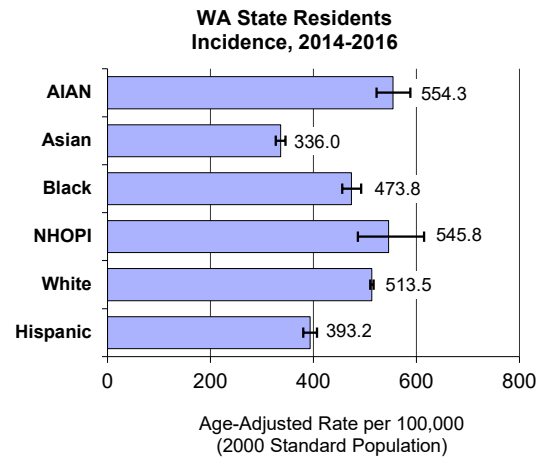
All Sites Combined

DATA DEFINITIONS: Incidence data were obtained from the Washington State Cancer Registry using ICD-0-3 codes C00.0 - C80. all histology codes. Death data were obtained from Washington State death certificates using the underlying cause of death ICD-9 codes 140-208, 238.6 (1992-1998), ICD-10 codes C00-C97 (1999-2016).

2014-2016 Washington State Residents

Average Annual Incidence and Age-Adjusted Rates

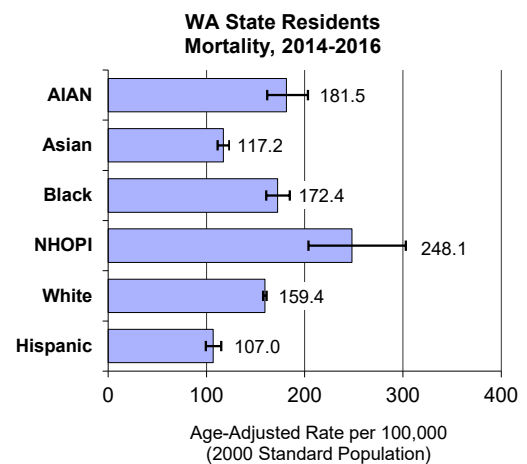
Race*/Ethnicity Group	Washington	
	New Cases Avg/Year	Age-Adjusted Rate 2000 Std Pop
AIAN ¹	459	554.3
Asian	1,769	336.0
Black	1,011	473.8
NHOPI ²	151	545.8
White	34,429	513.5
Hispanic	1,556	393.2



2014-2016 Washington State Residents

Average Annual Death and Age-Adjusted Rates

Race*/Ethnicity Group	Washington	
	Deaths Avg/Year	Age-Adjusted Rate 2000 Std Pop
AIAN ¹	128	181.5
Asian	548	117.2
Black	322	172.4
NHOPI ²	57	248.1
White	10,947	159.4
Hispanic	330	107.0



* Race groups include single race only, non-Hispanics except for the Hispanic group.

¹ AIAN: American Indian or Alaska Native

² NHOPI: Native Hawaiian or Other Pacific Islander

n/c - Rate and count not calculated when there were less than 10 cases for the period 2014-2016

Figures include in situ and invasive cancers

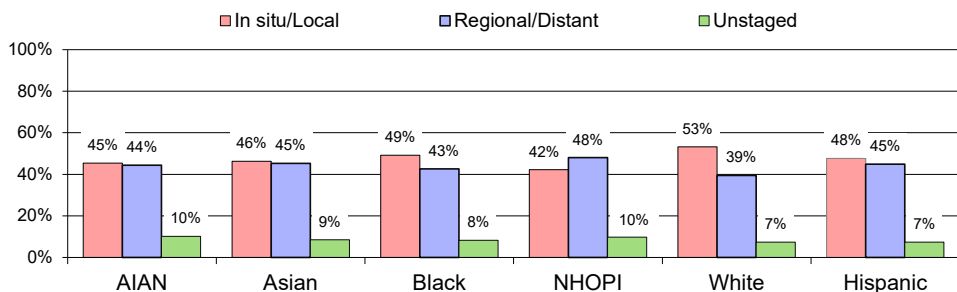
Incidence Data: Washington State Department of Health, Washington State Cancer Registry, released in January 2019.

Mortality Data: Washington State Department of Health, Center for Health Statistics, released in April 2018.

All Sites Combined

2014-2016 Washington State Residents

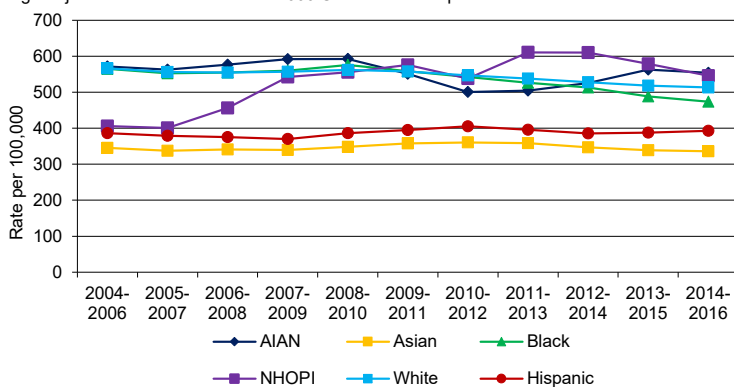
Stage At Diagnosis^{*,1,2}



n/c Total number of cases < 15

2004-2016 Washington State Residents Incidence Rates Trends^{*,1,2}

Age-adjusted rate standardized to 2000 US Standard Population



For all cancers combined age-adjusted incidence rates have changed as follows.

AIAN: Rates remained level from 2004 to 2016.

Asian: Rates remained level from 2004 to 2016.

Black: Rates decreased steadily by 1.6% per year from 2004 to 2016.

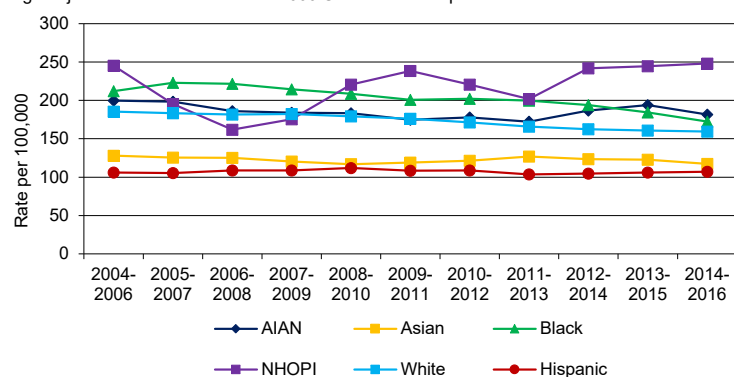
NHOPI: Rates remained level from 2004 to 2016.

White: Rates decreased slightly by 0.9% per year from 2004 to 2016.

Hispanic: Rates remained level from 2004 to 2016.

2004-2016 Washington State Residents Mortality Rates Trends^{*,1,2}

Age-adjusted rate standardized to 2000 US Standard Population



For all cancers combined age-adjusted mortality rates have changed as follows.

AIAN: Rates remained level from 2004 to 2016.

Asian: Rates remained level from 2004 to 2016.

Black: Rates remained level from 2004 to 2006; decreased steadily by 2.9% per year since 2006.

NHOPI: Rates remained level from 2004 to 2016.

White: Rates decreased steadily by 1.6% per year from 2004 to 2016.

Hispanic: Rates remained level from 2004 to 2016.

[†] Rates not calculated or displayed when there were less than 10 cases for the time period.

^{*} Race groups include single race only, non-Hispanics except for the Hispanic group.

¹ AIAN: American Indian or Alaska Native

² NHOPI: Native Hawaiian or Other Pacific Islander

Incidence Data: Washington State Department of Health, Washington State Cancer Registry, released in January 2019.

Mortality Data: Washington State Department of Health, Center for Health Statistics, released in April 2018.

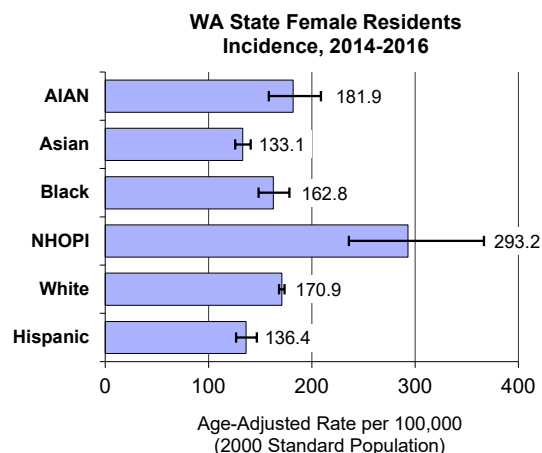
Breast (Female)

DATA DEFINITIONS: Incidence data were obtained from the Washington State Cancer Registry using primary site ICD-0-3 codes C50.0-C50.9, excluding histology codes 9140, 9050-9055, 9590-9992. Death data were obtained from Washington State death certificates using the underlying cause of death ICD-9 codes 174.0-174.9 (1992-1998), ICD-10 codes C50 (1999-2016).

2014-2016 Washington State Female Residents

Average Annual Incidence and Age-Adjusted Rates

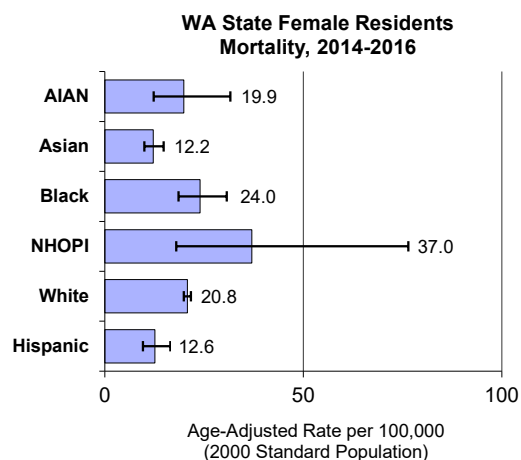
Race*/Ethnicity Group	Washington	
	New Cases Avg/Year	Age-Adjusted Rate 2000 Std Pop
AIAN ¹	83	181.9
Asian	427	133.1
Black	171	162.8
NHOPI ²	42	293.2
White	5,872	170.9
Hispanic	297	136.4



2014-2016 Washington State Female Residents

Average Annual Death and Age-Adjusted Rates

Race*/Ethnicity Group	Washington	
	Deaths Avg/Year	Age-Adjusted Rate 2000 Std Pop
AIAN ¹	8	19.9
Asian	37	12.2
Black	24	24.0
NHOPI ²	5	37.0
White	761	20.8
Hispanic	25	12.6



* Race groups include single race only, non-Hispanics except for the Hispanic group.

¹ AIAN: American Indian or Alaska Native

² NHOPI: Native Hawaiian or Other Pacific Islander

n/c - Rate and count not calculated when there were less than 10 cases for the period 2014-2016

Figures include in situ and invasive cancers

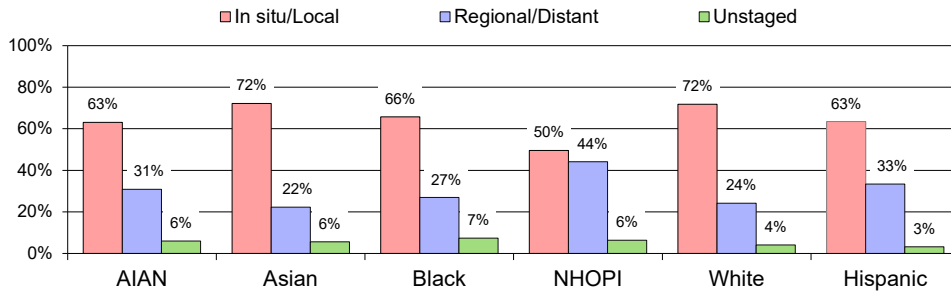
Incidence Data: Washington State Department of Health, Washington State Cancer Registry, released in January 2019.

Mortality Data: Washington State Department of Health, Center for Health Statistics, released in April 2018.

Breast (Female)

2014-2016 Washington State Female Residents

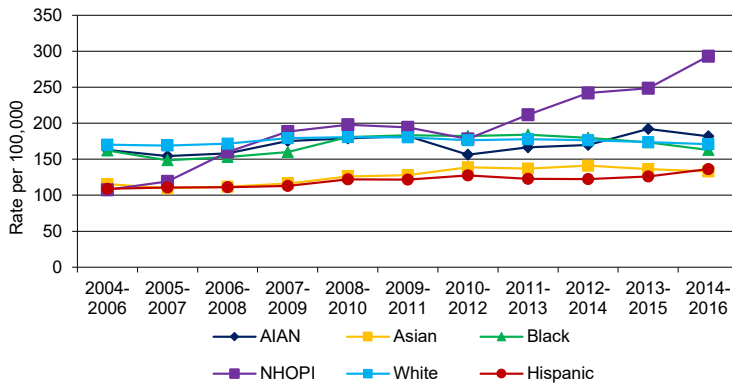
Stage At Diagnosis^{*,1,2}



n/c Total number of cases less than 15

2004-2016 Washington State Female Residents Incidence Rates Trends^{*,1,2}

Age-adjusted rate standardized to 2000 US Standard Population



For female breast cancer age-adjusted incidence rates have changed as follows.

AIAN: Rates remained level from 2004 to 2016.

Asian: Rates remained level from 2004 to 2006; increased sharply by 5.5% per year from 2006 to 2012; remained level since 2012.

Black: Rates remained level from 2004 to 2016.

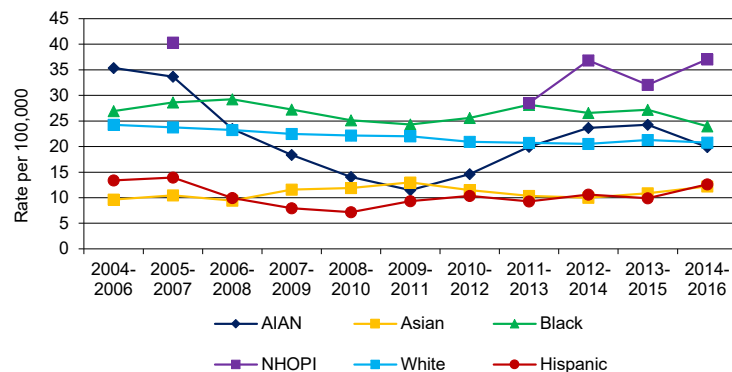
NHOPI: Rates increased sharply by 9.2% per year from 2004 to 2016.

White: Rates remained level from 2004 to 2016.

Hispanic: Rates increased steadily by 2.3% per year from 2004 to 2016.

2004-2016 Washington State Female Residents Mortality Rates Trends^{*,1,2}

Age-adjusted rate standardized to 2000 US Standard Population



For female breast cancer age-adjusted mortality rates have changed as follows.

AIAN: Rates decreased sharply by 21.2% per year from 2004 to 2009; remained level since 2009.

Asian: Rates remained level from 2004 to 2016.

Black: Rates remained level from 2004 to 2016.

NHOPI: Trends in rates from 2004 to 2016 could not be assessed due to small numbers of deaths.

White: Rates decreased steadily by 1.6% per year from 2004 to 2016.

Hispanic: Rates remained level from 2004 to 2016.

[†] Rates not calculated or displayed when there were less than 10 cases for the time period.

^{*} Race groups include single race only, non-Hispanics except for the Hispanic group.

¹ AIAN: American Indian or Alaska Native

² NHOPI: Native Hawaiian or Other Pacific Islander

Incidence Data: Washington State Department of Health, Washington State Cancer Registry, released in January 2019.

Mortality Data: Washington State Department of Health, Center for Health Statistics, released in April 2018.

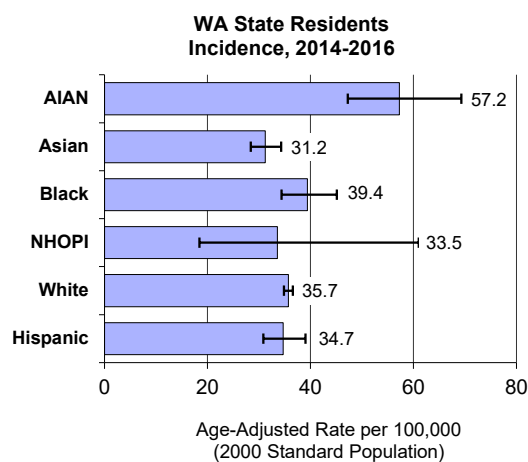
Colorectal

DATA DEFINITIONS: Incidence data were obtained from the Washington State Cancer Registry using primary site ICD-0-3 codes C18.0-C18.9, C19.9, C20.9, C26.0, excluding histology codes 9140, 9050-9055, 9590-9992. Death data were obtained from Washington State death certificates using the underlying cause of death ICD-9 codes 153.0-154.1, 159.0 (1992-1998), ICD-10 codes C18-C20, C26.0 (1999-2016).

2014-2016 Washington State Residents

Average Annual Incidence and Age-Adjusted Rates

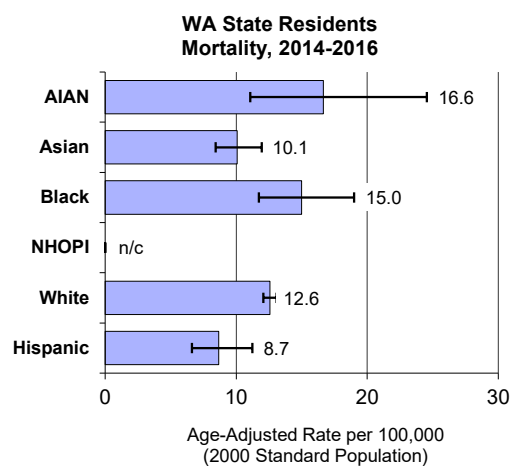
Race*/Ethnicity Group	Washington	
	New Cases Avg/Year	Age-Adjusted Rate 2000 Std Pop
AIAN ¹	46	57.2
Asian	162	31.2
Black	86	39.4
NHOPI ²	8	33.5
White	2,375	35.7
Hispanic	133	34.7



2014-2016 Washington State Residents

Average Annual Death and Age-Adjusted Rates

Race*/Ethnicity Group	Washington	
	Deaths Avg/Year	Age-Adjusted Rate 2000 Std Pop
AIAN ¹	12	16.6
Asian	49	10.1
Black	29	15.0
NHOPI ²	n/c	n/c
White	855	12.6
Hispanic	26	8.7



* Race groups include single race only, non-Hispanics except for the Hispanic group.

¹ AIAN: American Indian or Alaska Native

² NHOPI: Native Hawaiian or Other Pacific Islander

n/c - Rate and count not calculated when there were less than 10 cases for the period 2014-2016

Figures include in situ and invasive cancers

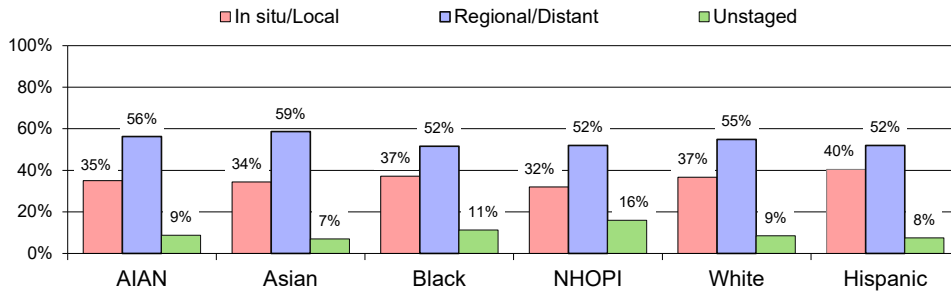
Incidence Data: Washington State Department of Health, Washington State Cancer Registry, released in January 2019.

Mortality Data: Washington State Department of Health, Center for Health Statistics, released in April 2018.

Colorectal

2014-2016 Washington State Residents

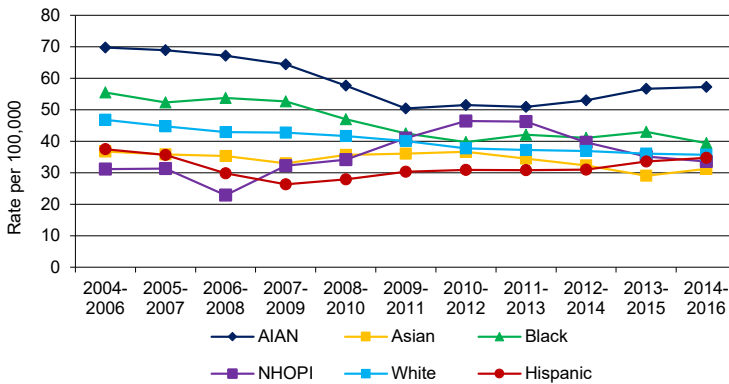
Stage At Diagnosis^{*,1,2}



n/c Total number of cases < 15

2004-2016 Washington State Residents Incidence Rates Trends^{*,1,2}

Age-adjusted rate standardized to 2000 US Standard Population

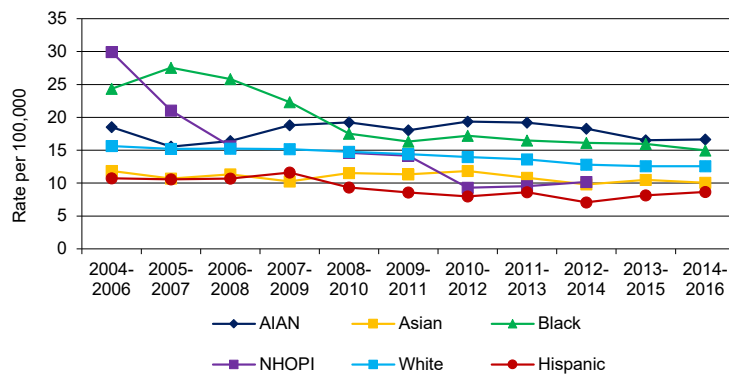


For colorectal cancer age-adjusted incidence rates have changed as follows.

- AIAN:** Rates remained level from 2004 to 2016.
- Asian:** Rates remained level from 2004 to 2016.
- Black:** Rates decreased steadily by 3.6% per year from 2004 to 2016.
- NHOPI:** Rates remained level from 2004 to 2016.
- White:** Rates decreased steadily by 2.7% per year from 2004 to 2016.
- Hispanic:** Rates remained level from 2004 to 2008; remained level since 2008.

2004-2016 Washington State Residents Mortality Rates Trends^{*,1,2}

Age-adjusted rate standardized to 2000 US Standard Population



For colorectal cancer age-adjusted mortality rates have changed as follows.

- AIAN:** Rates remained level from 2004 to 2016.
- Asian:** Rates remained level from 2004 to 2016.
- Black:** Rates decreased sharply by 5.7% per year from 2004 to 2016.
- NHOPI:** Trends in rates from 2004 to 2016 could not be assessed due to small numbers of deaths.
- White:** Rates decreased steadily by 2.2% per year from 2004 to 2016.
- Hispanic:** Rates remained level from 2004 to 2016.

⁺ Rates not calculated or displayed when there were less than 10 cases for the time period.

^{*} Race groups include single race only, non-Hispanics except for the Hispanic group.

¹ AIAN: American Indian or Alaska Native

² NHOPI: Native Hawaiian or Other Pacific Islander

Incidence Data: Washington State Department of Health, Washington State Cancer Registry, released in January 2019.

Mortality Data: Washington State Department of Health, Center for Health Statistics, released in April 2018.

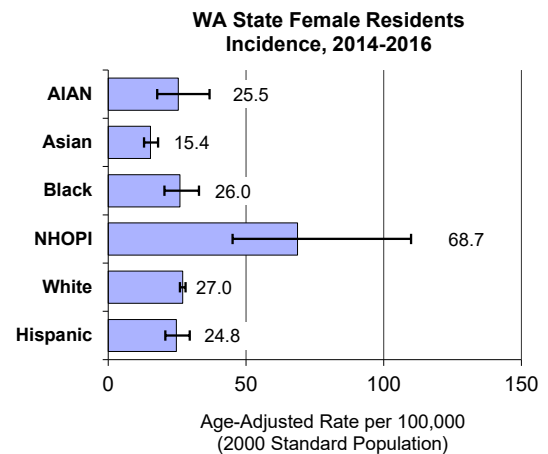
Endometrium

DATA DEFINITIONS: Incidence data were obtained from the Washington State Cancer Registry using primary site ICD-0-3 codes C54.0-C54.9, excluding histology codes 9140, 9050-9055, 9590-9992. Death data were obtained from Washington State death certificates using the underlying cause of death ICD-9 codes 182.0-182.1, 182.8 (1992-1998), ICD-10 codes C54 (1999-2016).

2014-2016 Washington State Female Residents

Average Annual Incidence and Age-Adjusted Rates

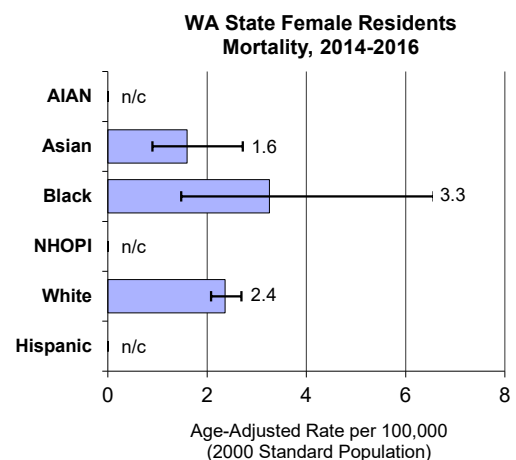
Race*/Ethnicity Group	Washington	
	New Cases Avg/Year	Age-Adjusted Rate 2000 Std Pop
AIAN ¹	13	25.5
Asian	52	15.4
Black	27	26.0
NHOPI ²	12	68.7
White	996	27.0
Hispanic	53	24.8



2014-2016 Washington State Female Residents

Average Annual Death and Age-Adjusted Rates

Race*/Ethnicity Group	Washington	
	Deaths Avg/Year	Age-Adjusted Rate 2000 Std Pop
AIAN ¹	n/c	n/c
Asian	5	1.6
Black	3	3.3
NHOPI ²	n/c	n/c
White	88	2.4
Hispanic	n/c	n/c



* Race groups include single race only, non-Hispanics except for the Hispanic group.

¹ AIAN: American Indian or Alaska Native

² NHOPI: Native Hawaiian or Other Pacific Islander

n/c - Rate and count not calculated when there were less than 10 cases for the period 2014-2016

Figures include in situ and invasive cancers

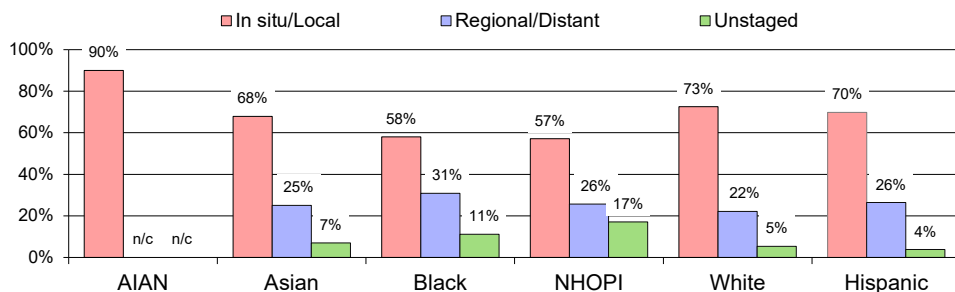
Incidence Data: Washington State Department of Health, Washington State Cancer Registry, released in January 2019.

Mortality Data: Washington State Department of Health, Center for Health Statistics, released in April 2018.

Endometrium

2014-2016 Washington State Female Residents

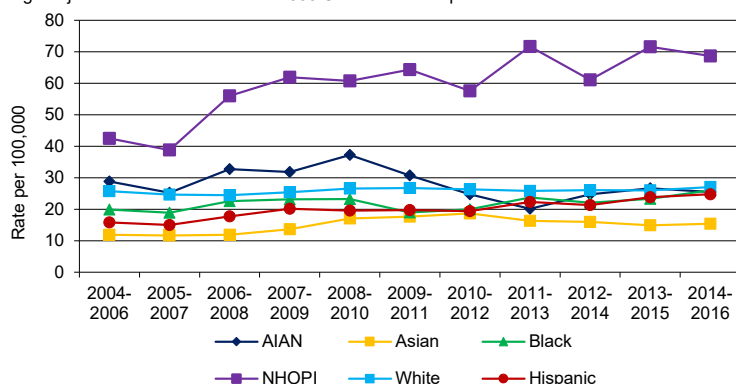
Stage At Diagnosis^{*,1,2}



n/c Total number of cases less than 15

2004-2016 Washington State Female Residents Incidence Rates Trends^{*,1,2}

Age-adjusted rate standardized to 2000 US Standard Population

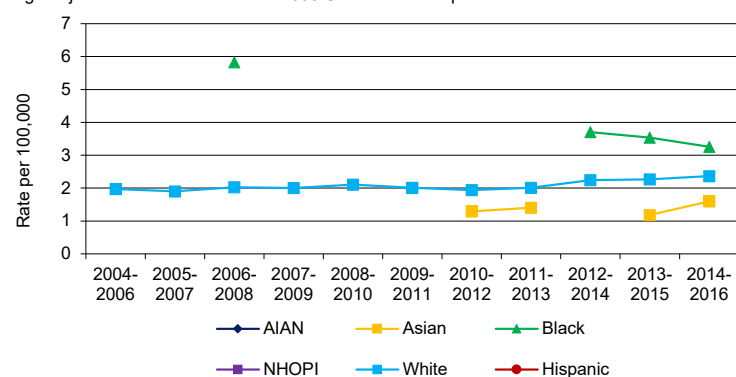


For endometrial cancer age-adjusted incidence rates have changed as follows.

- AIAN:** Rates remained level from 2004 to 2016.
- Asian:** Rates remained level from 2004 to 2016.
- Black:** Rates remained level from 2004 to 2016.
- NHOPI:** Rates remained level from 2004 to 2016.
- White:** Rates remained level from 2004 to 2016.
- Hispanic:** Rates increased sharply by 4.1% per year from 2004 to 2016.

2004-2016 Washington State Female Residents Mortality Rates Trends^{*,1,2}

Age-adjusted rate standardized to 2000 US Standard Population



For endometrial cancer age-adjusted mortality rates have changed as follows.

- AIAN:** Trends in rates from 2004 to 2016 could not be assessed due to small numbers of deaths.
- Asian:** Trends in rates from 2004 to 2016 could not be assessed due to small numbers of deaths.
- Black:** Trends in rates from 2004 to 2016 could not be assessed due to small numbers of deaths.
- NHOPI:** Trends in rates from 2004 to 2016 could not be assessed due to small numbers of deaths.
- White:** Rates remained level from 2004 to 2016.
- Hispanic:** Trends in rates from 2004 to 2016 could not be assessed due to small numbers of deaths.

⁺ Rates not calculated or displayed when there were less than 10 cases for the time period.

^{*} Race groups include single race only, non-Hispanics except for the Hispanic group.

¹ AIAN: American Indian or Alaska Native

² NHOPI: Native Hawaiian or Other Pacific Islander

Incidence Data: Washington State Department of Health, Washington State Cancer Registry, released in January 2019.

Mortality Data: Washington State Department of Health, Center for Health Statistics, released in April 2018.

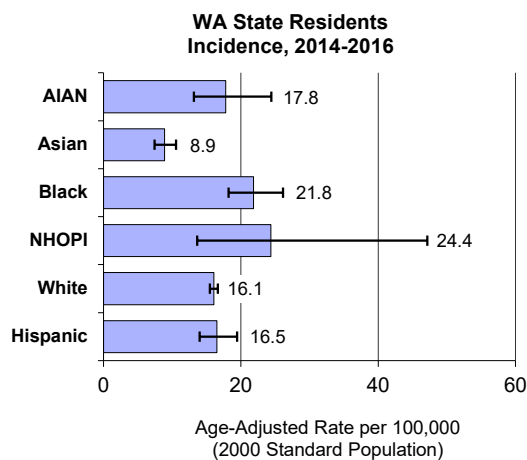
Kidney and Renal Pelvis

DATA DEFINITIONS: Incidence data were obtained from the Washington State Cancer Registry using primary site ICD-0-3 codes C64.9, C65.9, excluding histology codes 9140, 9050-9055, 9590-9992. Death data were obtained from Washington State death certificates using the underlying cause of death ICD-9 codes 189.0, 189.1 (1992-1998), ICD-10 codes C64-C65 (1999-2016).

2014-2016 Washington State Residents

Average Annual Incidence and Age-Adjusted Rates

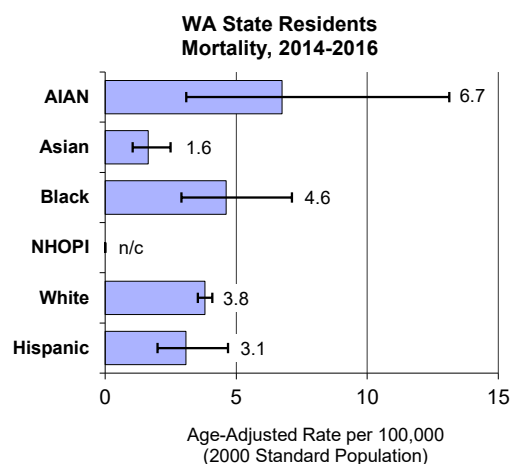
Race*/Ethnicity Group	Washington	
	New Cases Avg/Year	Age-Adjusted Rate 2000 Std Pop
AIAN ¹	18	17.8
Asian	48	8.9
Black	49	21.8
NHOPI ²	7	24.4
White	1,080	16.1
Hispanic	68	16.5



2014-2016 Washington State Residents

Average Annual Death and Age-Adjusted Rates

Race*/Ethnicity Group	Washington	
	Deaths Avg/Year	Age-Adjusted Rate 2000 Std Pop
AIAN ¹	4	6.7
Asian	9	1.6
Black	9	4.6
NHOPI ²	n/c	n/c
White	265	3.8
Hispanic	11	3.1



* Race groups include single race only, non-Hispanics except for the Hispanic group.

¹ AIAN: American Indian or Alaska Native

² NHOPI: Native Hawaiian or Other Pacific Islander

n/c - Rate and count not calculated when there were less than 10 cases for the period 2014-2016

Figures include in situ and invasive cancers

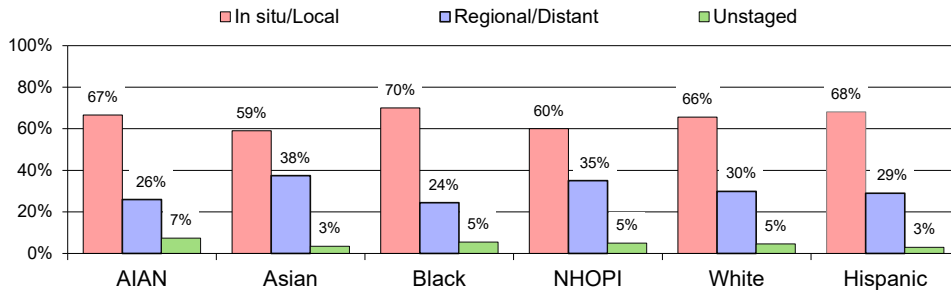
Incidence Data: Washington State Department of Health, Washington State Cancer Registry, released in January 2019.

Mortality Data: Washington State Department of Health, Center for Health Statistics, released in April 2018.

Kidney and Renal Pelvis

2014-2016 Washington State Residents

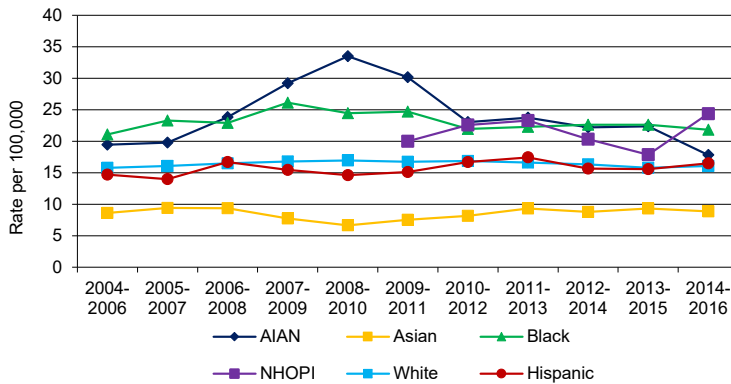
Stage At Diagnosis^{*,1,2}



n/c Total number of cases < 15

2004-2016 Washington State Residents Incidence Rates Trends^{*,1,2}

Age-adjusted rate standardized to 2000 US Standard Population



For kidney and renal pelvis cancer age-adjusted incidence rates have changed as follows.

AIAN: Rates remained level from 2004 to 2016.

Asian: Rates remained level from 2004 to 2016.

Black: Rates remained level from 2004 to 2016.

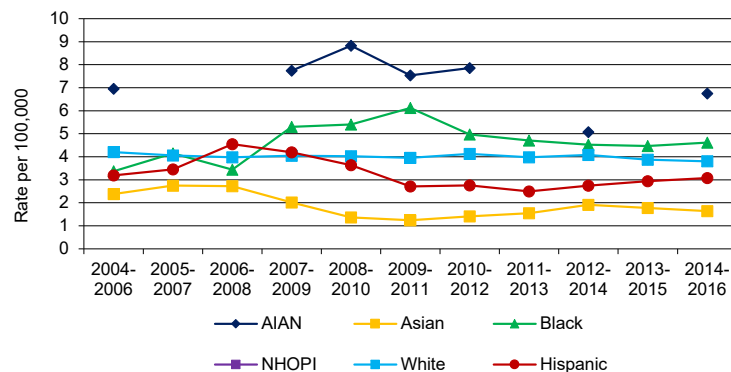
NHOPI: Trends in rates from 2004 to 2016 could not be assessed due to small numbers of new cases.

White: Rates remained level from 2004 to 2016.

Hispanic: Rates remained level from 2004 to 2016.

2004-2016 Washington State Residents Mortality Rates Trends^{*,1,2}

Age-adjusted rate standardized to 2000 US Standard Population



For kidney and renal pelvis cancer age-adjusted mortality rates have changed as follows.

AIAN: Trends in rates from 2004 to 2016 could not be assessed due to small numbers of deaths.

Asian: Rates remained level from 2004 to 2016.

Black: Rates remained level from 2004 to 2016.

NHOPI: Trends in rates from 2004 to 2016 could not be assessed due to small numbers of deaths.

White: Rates remained level from 2004 to 2016.

Hispanic: Rates remained level from 2004 to 2016.

[†] Rates not calculated or displayed when there were less than 10 cases for the time period.

^{*} Race groups include single race only, non-Hispanics except for the Hispanic group.

¹ AIAN: American Indian or Alaska Native

² NHOPI: Native Hawaiian or Other Pacific Islander

Incidence Data: Washington State Department of Health, Washington State Cancer Registry, released in January 2019.

Mortality Data: Washington State Department of Health, Center for Health Statistics, released in April 2018.

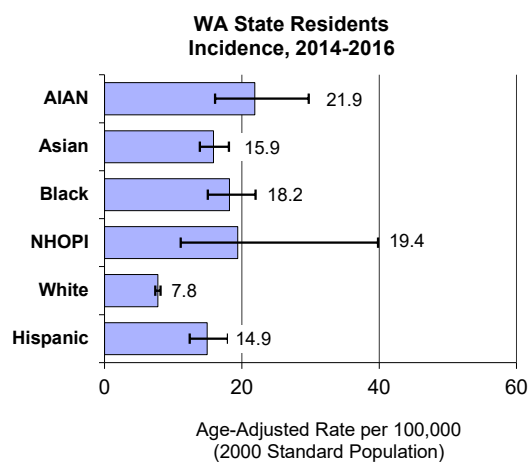
Liver and Intrahepatic Bile Duct

DATA DEFINITIONS: Incidence data were obtained from the Washington State Cancer Registry using primary site ICD-0-3 code C22.0-C22.1, excluding histology codes 9140, 9050-9055, 9590-9992. Death data were obtained from Washington State death certificates using the underlying cause of death ICD-9 codes 155.0-155.2 (1992-1998), ICD-10 codes C22.0-C22.4, C22.7, C22.9 (1999-2016).

2014-2016 Washington State Residents

Average Annual Incidence and Age-Adjusted Rates

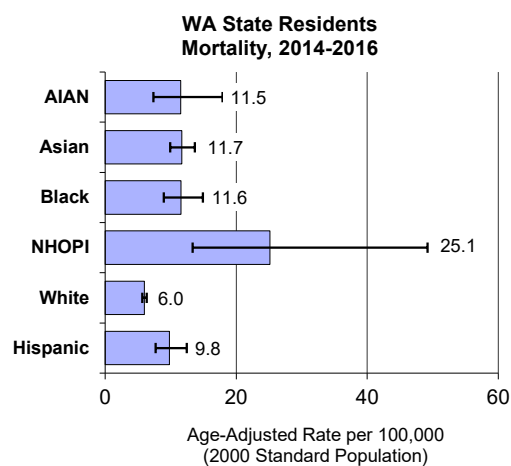
Race*/Ethnicity Group	Washington	
	New Cases Avg/Year	Age-Adjusted Rate 2000 Std Pop
AIAN ¹	19	21.9
Asian	83	15.9
Black	43	18.2
NHOPI ²	6	19.4
White	577	7.8
Hispanic	52	14.9



2014-2016 Washington State Residents

Average Annual Death and Age-Adjusted Rates

Race*/Ethnicity Group	Washington	
	Deaths Avg/Year	Age-Adjusted Rate 2000 Std Pop
AIAN ¹	10	11.5
Asian	58	11.7
Black	25	11.6
NHOPI ²	7	25.1
White	441	6.0
Hispanic	31	9.8



* Race groups include single race only, non-Hispanics except for the Hispanic group.

¹ AIAN: American Indian or Alaska Native

² NHOPI: Native Hawaiian or Other Pacific Islander

n/c - Rate and count not calculated when there were less than 10 cases for the period 2014-2016

Figures include in situ and invasive cancers

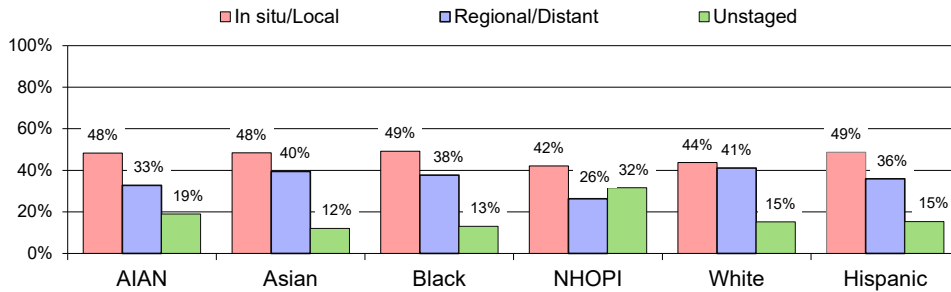
Incidence Data: Washington State Department of Health, Washington State Cancer Registry, released in January 2019.

Mortality Data: Washington State Department of Health, Center for Health Statistics, released in April 2018.

Liver and Intrahepatic Bile Duct

2014-2016 Washington State Residents

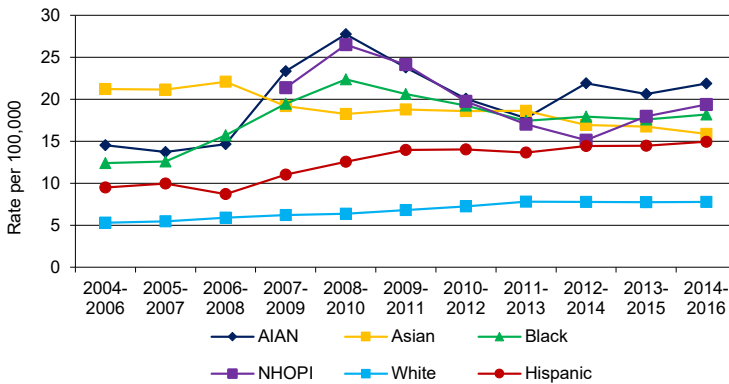
Stage At Diagnosis^{*,1,2}



n/c Total number of cases < 15

2004-2016 Washington State Residents Incidence Rates Trends^{*,1,2}

Age-adjusted rate standardized to 2000 US Standard Population



For liver and intrahepatic bile duct cancer age-adjusted incidence rates have changed as follows.

AIAN: Rates remained level from 2004 to 2016.

Asian: Rates decreased steadily by 2.6% per year from 2004 to 2016.

Black: Rates increased sharply by 14.9% per year from 2004 to 2009; remained level since 2009.

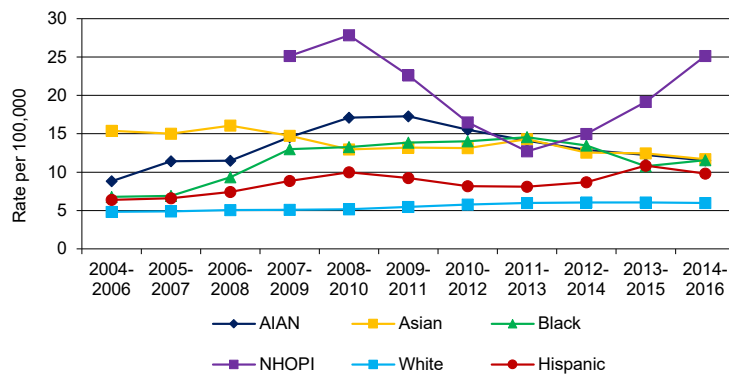
NHOPI: Trends in rates from 2004 to 2016 could not be assessed due to small numbers of new cases.

White: Rates increased steadily by 3.9% per year from 2004 to 2016.

Hispanic: Rates increased sharply by 4.0% per year from 2004 to 2016.

2004-2016 Washington State Residents Mortality Rates Trends^{*,1,2}

Age-adjusted rate standardized to 2000 US Standard Population



For liver and intrhepatic bile duct cancer age-adjusted mortality rates have changed as follows.

AIAN: Rates remained level from 2004 to 2009; remained level since 2009.

Asian: Rates decreased steadily by 2.6% per year from 2004 to 2016.

Black: Rates remained level from 2004 to 2016.

NHOPI: Trends in rates from 2004 to 2016 could not be assessed due to small numbers of deaths.

White: Rates increased steadily by 2.3% per year from 2004 to 2016.

Hispanic: Rates remained level from 2004 to 2016.

[†] Rates not calculated or displayed when there were less than 10 cases for the time period.

^{*} Race groups include single race only, non-Hispanics except for the Hispanic group.

¹ AIAN: American Indian or Alaska Native

² NHOPI: Native Hawaiian or Other Pacific Islander

Incidence Data: Washington State Department of Health, Washington State Cancer Registry, released in January 2019.

Mortality Data: Washington State Department of Health, Center for Health Statistics, released in April 2018.

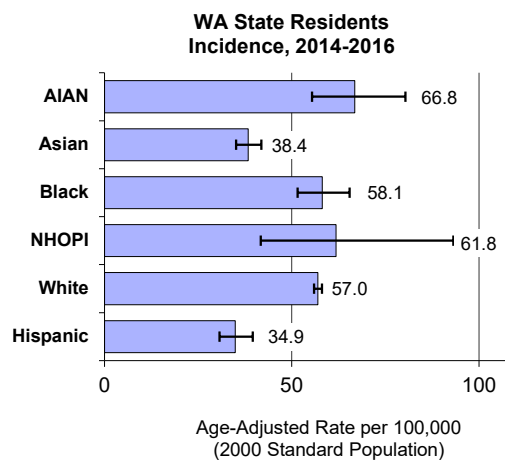
Lung and Bronchus

DATA DEFINITIONS: Incidence data were obtained from the Washington State Cancer Registry using primary site ICD-0-3 codes C34.0-C34.9, excluding histology codes 9140, 9050-9055, 9590-9992. Death data were obtained from Washington State death certificates using the underlying cause of death ICD-9 codes 162.2-162.9 (1992-1998), ICD-10 code C34 (1999-2016).

2014-2016 Washington State Residents

Average Annual Incidence and Age-Adjusted Rates

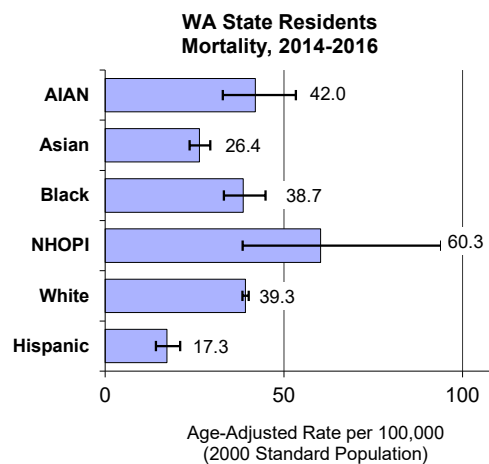
Race*/Ethnicity Group	Washington	
	New Cases Avg/Year	Age-Adjusted Rate 2000 Std Pop
AIAN ¹	50	66.8
Asian	186	38.4
Black	110	58.1
NHOPI ²	14	61.8
White	3,940	57.0
Hispanic	103	34.9



2014-2016 Washington State Residents

Average Annual Death and Age-Adjusted Rates

Race*/Ethnicity Group	Washington	
	Deaths Avg/Year	Age-Adjusted Rate 2000 Std Pop
AIAN ¹	29	42.0
Asian	121	26.4
Black	70	38.7
NHOPI ²	11	60.3
White	2,712	39.3
Hispanic	44	17.3



* Race groups include single race only, non-Hispanics except for the Hispanic group.

¹ AIAN: American Indian or Alaska Native

² NHOPI: Native Hawaiian or Other Pacific Islander

n/c - Rate and count not calculated when there were less than 10 cases for the period 2014-2016

Figures include in situ and invasive cancers

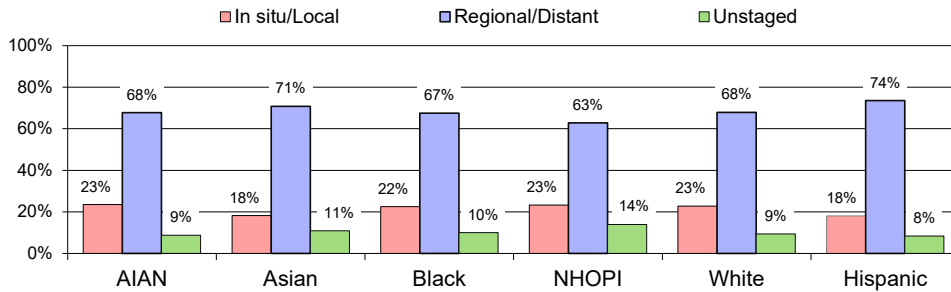
Incidence Data: Washington State Department of Health, Washington State Cancer Registry, released in January 2019.

Mortality Data: Washington State Department of Health, Center for Health Statistics, released in April 2018.

Lung and Bronchus

2014-2016 Washington State Residents

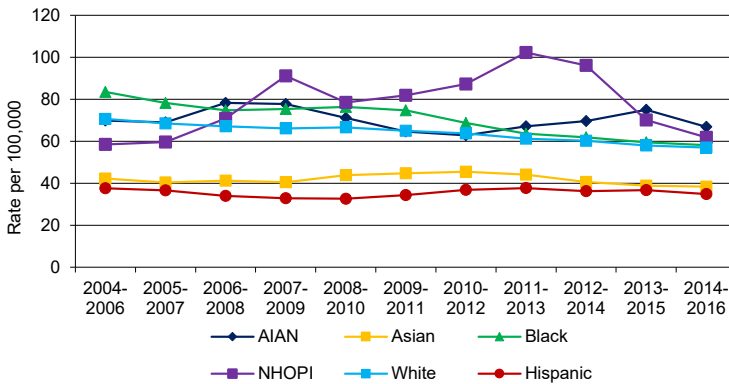
Stage At Diagnosis^{*,1,2}



n/c Total number of cases < 15

2004-2016 Washington State Residents Incidence Rates Trends^{*,1,2}

Age-adjusted rate standardized to 2000 US Standard Population

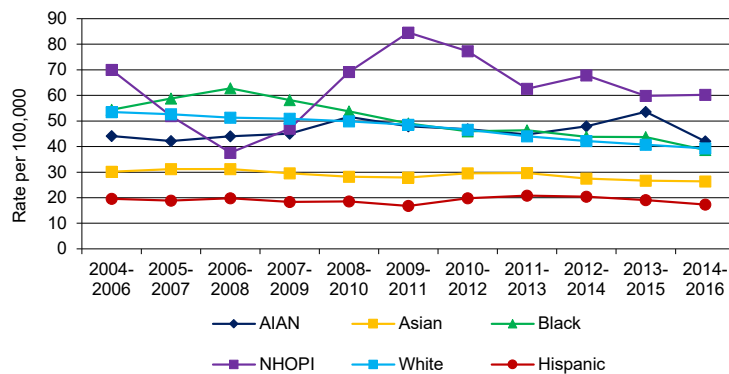


For lung and bronchus cancer age-adjusted incidence rates have changed as follows.

- AIAN:** Rates remained level from 2004 to 2016.
- Asian:** Rates remained level from 2004 to 2016.
- Black:** Rates decreased steadily by 3.5% per year from 2004 to 2016.
- NHOPI:** Rates remained level from 2004 to 2016.
- White:** Rates decreased steadily by 2.1% per year from 2004 to 2016.
- Hispanic:** Rates remained level from 2004 to 2016.

2004-2016 Washington State Residents Mortality Rates Trends^{*,1,2}

Age-adjusted rate standardized to 2000 US Standard Population



For lung and bronchus cancer age-adjusted mortality rates have changed as follows.

- AIAN:** Rates remained level from 2004 to 2016.
- Asian:** Rates remained level from 2004 to 2016.
- Black:** Rates remained level from 2004 to 2006; decreased sharply by 5.4% per year since 2006.
- NHOPI:** Rates remained level from 2004 to 2016.
- White:** Rates decreased steadily by 1.9% per year from 2004 to 2010; decreased sharply by 4.3% per year since 2010.
- Hispanic:** Rates remained level from 2004 to 2016.

[†] Rates not calculated or displayed when there were less than 10 cases for the time period.

^{*} Race groups include single race only, non-Hispanics except for the Hispanic group.

¹ AIAN: American Indian or Alaska Native

² NHOPI: Native Hawaiian or Other Pacific Islander

Incidence Data: Washington State Department of Health, Washington State Cancer Registry, released in January 2019.

Mortality Data: Washington State Department of Health, Center for Health Statistics, released in April 2018.

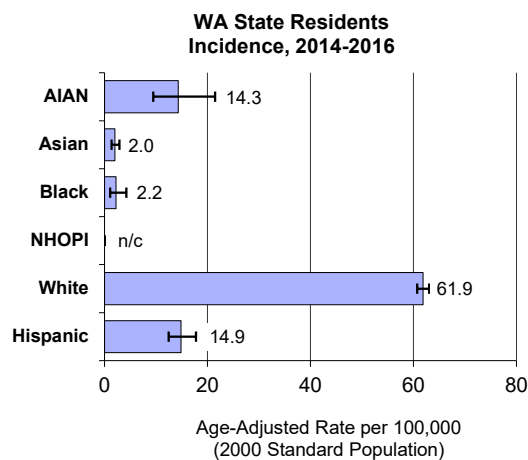
Melanoma of the Skin

DATA DEFINITIONS: Incidence data were obtained from the Washington State Cancer Registry using primary site ICD-0-3 codes C44.0-C44.9, including only histology codes 8720-8790. Death data were obtained from Washington State death certificates using the underlying cause of death ICD-9 codes 172.0-172.9 (1992-1998), ICD-10 code C43 (1999-2016).

2014-2016 Washington State Residents

Average Annual Incidence and Age-Adjusted Rates

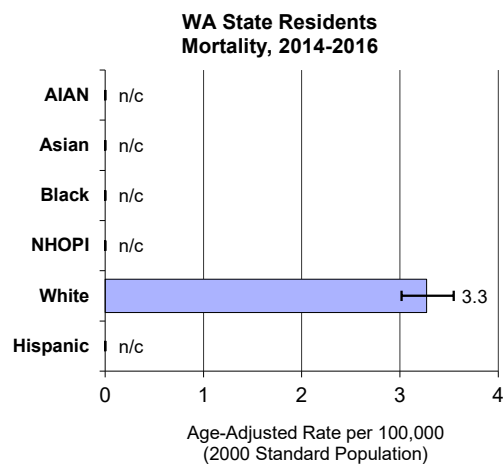
Race*/Ethnicity Group	Washington	
	New Cases Avg/Year	Age-Adjusted Rate 2000 Std Pop
AIAN ¹	11	14.3
Asian	11	2.0
Black	4	2.2
NHOPI ²	n/c	n/c
White	4,005	61.9
Hispanic	60	14.9



2014-2016 Washington State Residents

Average Annual Death and Age-Adjusted Rates

Race*/Ethnicity Group	Washington	
	Deaths Avg/Year	Age-Adjusted Rate 2000 Std Pop
AIAN ¹	n/c	n/c
Asian	n/c	n/c
Black	n/c	n/c
NHOPI ²	n/c	n/c
White	217	3.3
Hispanic	n/c	n/c



* Race groups include single race only, non-Hispanics except for the Hispanic group.

¹ AIAN: American Indian or Alaska Native

² NHOPI: Native Hawaiian or Other Pacific Islander

n/c - Rate and count not calculated when there were less than 10 cases for the period 2014-2016

Figures include in situ and invasive cancers

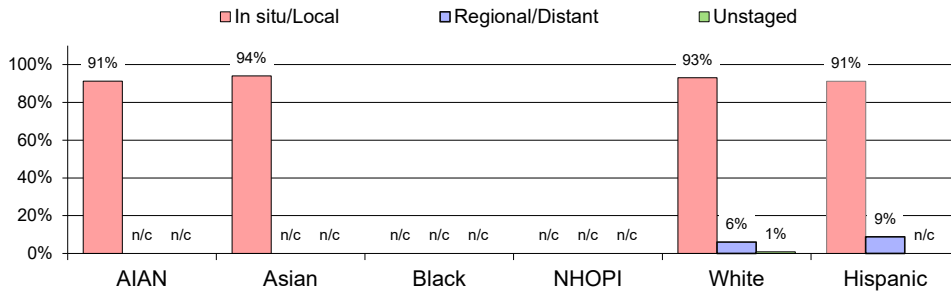
Incidence Data: Washington State Department of Health, Washington State Cancer Registry, released in January 2019.

Mortality Data: Washington State Department of Health, Center for Health Statistics, released in April 2018.

Melanoma of the Skin

2014-2016 Washington State Residents

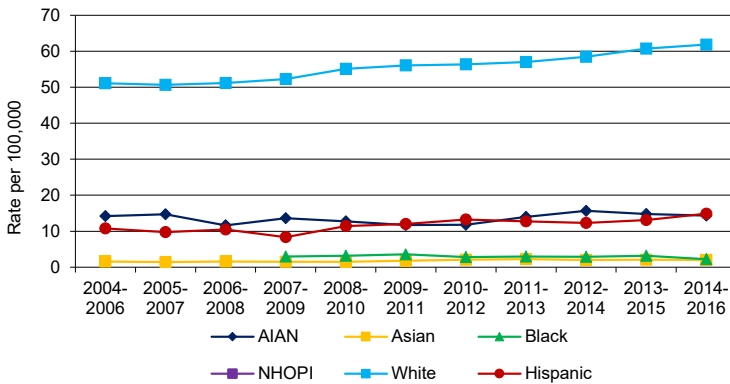
Stage At Diagnosis^{*,1,2}



n/c Total number of cases < 15

2004-2016 Washington State Residents Incidence Rates Trends^{*,1,2}

Age-adjusted rate standardized to 2000 US Standard Population



For melanoma of the skin cancer age-adjusted incidence rates have changed as follows.

AIAN: Rates remained level from 2004 to 2016.

Asian: Rates remained level from 2004 to 2016.

Black: Trends in rates from 2004 to 2016 could not be assessed due to small numbers of new cases.

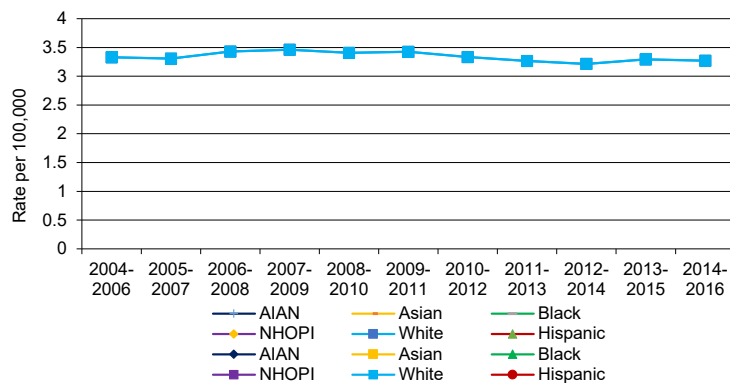
NHOPI: Trends in rates from 2004 to 2016 could not be assessed due to small numbers of new cases.

White: Rates increased steadily by 2.0% per year from 2004 to 2016.

Hispanic: Rates increased sharply by 5.0% per year from 2004 to 2016.

2004-2016 Washington State Residents Mortality Rates Trends^{*,1,2}

Age-adjusted rate standardized to 2000 US Standard Population



For melanoma of the skin cancer age-adjusted mortality rates have changed as follows.

AIAN: Trends in rates from 2004 to 2016 could not be assessed due to small numbers of deaths.

Asian: Trends in rates from 2004 to 2016 could not be assessed due to small numbers of deaths.

Black: Trends in rates from 2004 to 2016 could not be assessed due to small numbers of deaths.

NHOPI: Trends in rates from 2004 to 2016 could not be assessed due to small numbers of deaths.

White: Rates remained level from 2004 to 2016.

Hispanic: Trends in rates from 2004 to 2016 could not be assessed due to small numbers of deaths.

[†] Rates not calculated or displayed when there were less than 10 cases for the time period.

^{*} Race groups include single race only, non-Hispanics except for the Hispanic group.

¹ AIAN: American Indian or Alaska Native

² NHOPI: Native Hawaiian or Other Pacific Islander

Incidence Data: Washington State Department of Health, Washington State Cancer Registry, released in January 2019.

Mortality Data: Washington State Department of Health, Center for Health Statistics, released in April 2018.

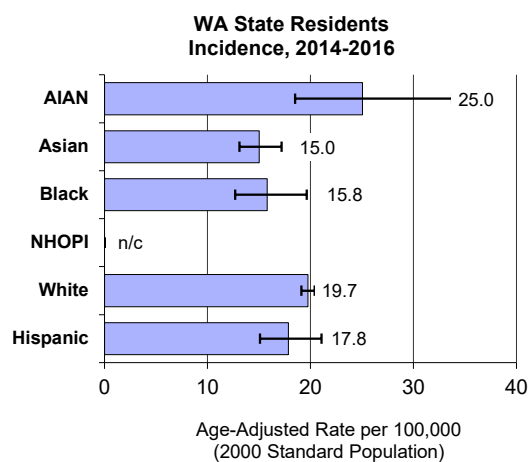
Non-Hodgkin Lymphoma

DATA DEFINITIONS: Incidence data were obtained from the Washington State Cancer Registry using all sites with histology 9590-9597, 9670-9729, 9735, 9737, 9738; and except for sites C420, C421 and C424 all other sites with histology 9823, 9827, 9837, or 9811-9818. Death data were obtained from Washington State death certificates using the underlying cause of death ICD-9 codes 200.0-200.8, 202.0-202.2, 202.8-202.9 (1992-1998), ICD-10 codes C82-C85, C96.3 (1999-2016).

2014-2016 Washington State Residents

Average Annual Incidence and Age-Adjusted Rates

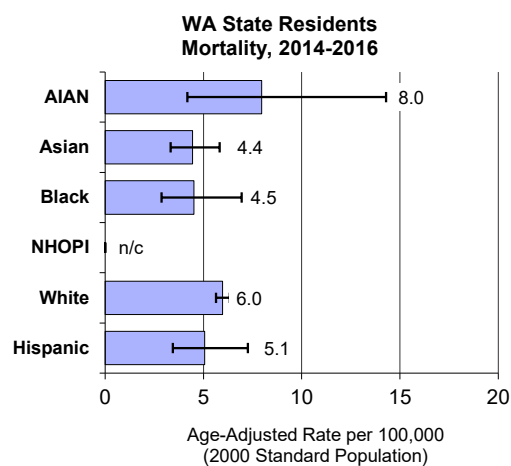
Race*/Ethnicity Group	Washington	
	New Cases Avg/Year	Age-Adjusted Rate 2000 Std Pop
AIAN ¹	20	25.0
Asian	79	15.0
Black	34	15.8
NHOPI ²	n/c	n/c
White	1,312	19.7
Hispanic	69	17.8



2014-2016 Washington State Residents

Average Annual Death and Age-Adjusted Rates

Race*/Ethnicity Group	Washington	
	Deaths Avg/Year	Age-Adjusted Rate 2000 Std Pop
AIAN ¹	5	8.0
Asian	19	4.4
Black	9	4.5
NHOPI ²	n/c	n/c
White	403	6.0
Hispanic	14	5.1



* Race groups include single race only, non-Hispanics except for the Hispanic group.

¹ AIAN: American Indian or Alaska Native

² NHOPI: Native Hawaiian or Other Pacific Islander

n/c - Rate and count not calculated when there were less than 10 cases for the period 2014-2016

Figures include only invasive cancers

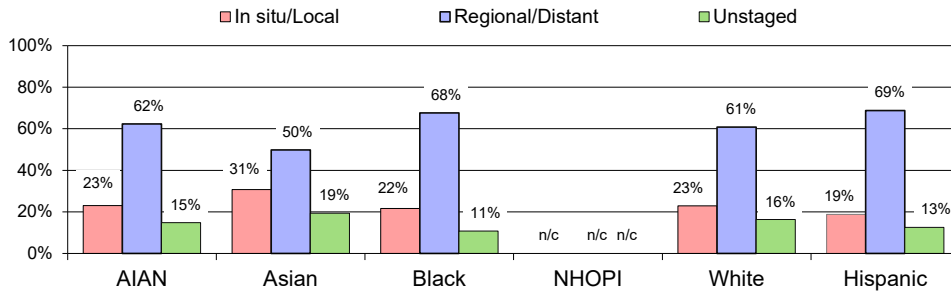
Incidence Data: Washington State Department of Health, Washington State Cancer Registry, released in January 2019.

Mortality Data: Washington State Department of Health, Center for Health Statistics, released in April 2018.

Non-Hodgkin Lymphoma

2014-2016 Washington State Residents

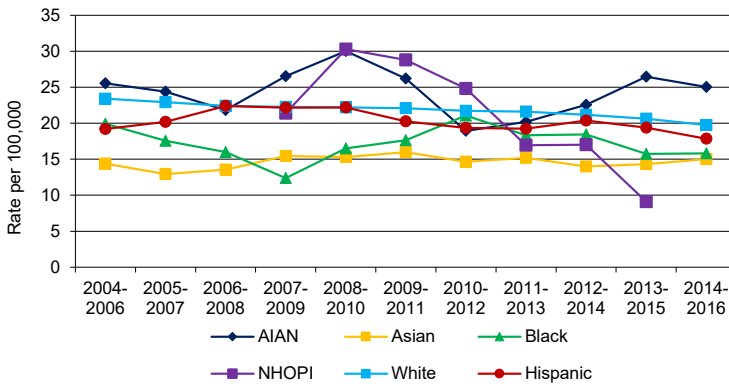
Stage At Diagnosis^{*,1,2}



n/c Total number of cases < 15

2004-2016 Washington State Residents Incidence Rates Trends^{*,1,2}

Age-adjusted rate standardized to 2000 US Standard Population



For Non-Hodgkin Lymphoma age-adjusted incidence rates have changed as follows.

AIAN: Rates remained level from 2004 to 2016.

Asian: Rates remained level from 2004 to 2016.

Black: Rates remained level from 2004 to 2016.

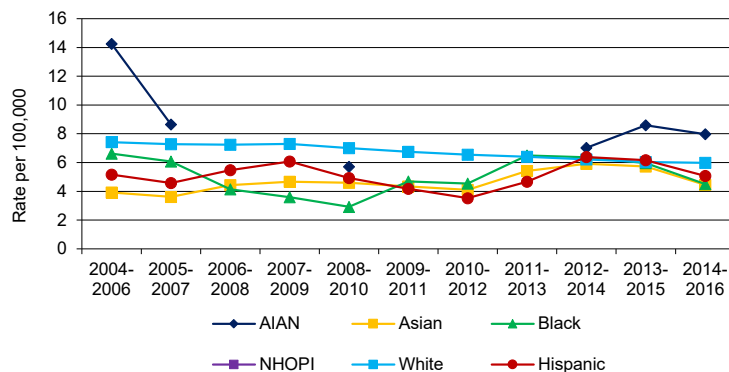
NHOPI: Trends in rates from 2004 to 2016 could not be assessed due to small numbers of new cases.

White: Rates decreased steadily by 1.1% per year from 2004 to 2013; decreased steadily by 3.8% per year since 2013.

Hispanic: Rates remained level from 2004 to 2016.

2004-2016 Washington State Residents Mortality Rates Trends^{*,1,2}

Age-adjusted rate standardized to 2000 US Standard Population



For Non-Hodgkin Lymphoma age-adjusted mortality rates have changed as follows.

AIAN: Rates remained level from 2004 to 2016.

Asian: Rates remained level from 2004 to 2016.

Black: Rates remained level from 2004 to 2016.

NHOPI: Trends in rates from 2004 to 2016 could not be assessed due to small numbers of deaths..

White: Rates decreased steadily by 2.3% per year from 2004 to 2016.

Hispanic: Rates remained level from 2004 to 2016.

⁺ Rates not calculated or displayed when there were less than 10 cases for the time period.

^{*} Race groups include single race only, non-Hispanics except for the Hispanic group.

¹ AIAN: American Indian or Alaska Native

² NHOPI: Native Hawaiian or Other Pacific Islander

Incidence Data: Washington State Department of Health, Washington State Cancer Registry, released in January 2019.

Mortality Data: Washington State Department of Health, Center for Health Statistics, released in April 2018.

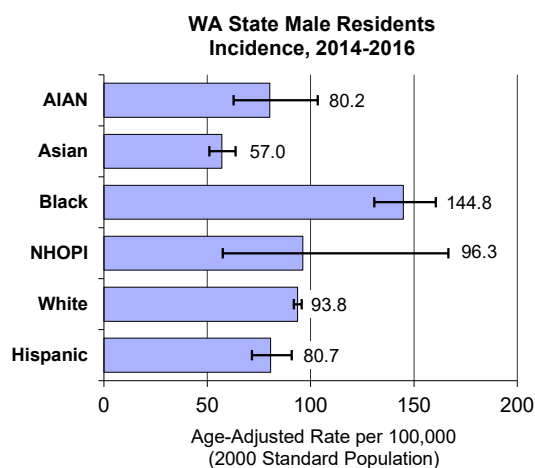
Prostate

DATA DEFINITIONS: Incidence data were obtained from the Washington State Cancer Registry using primary site ICD-0-3 code C61.9, excluding histology codes 9140, 9050-9055, 9590-9992. Death data were obtained from Washington State death certificates using the underlying cause of death ICD-9 code 185 (1992-1998), ICD-10 code C61 (1999-2016).

2014-2016 Washington State Male Residents

Average Annual Incidence and Age-Adjusted Rates

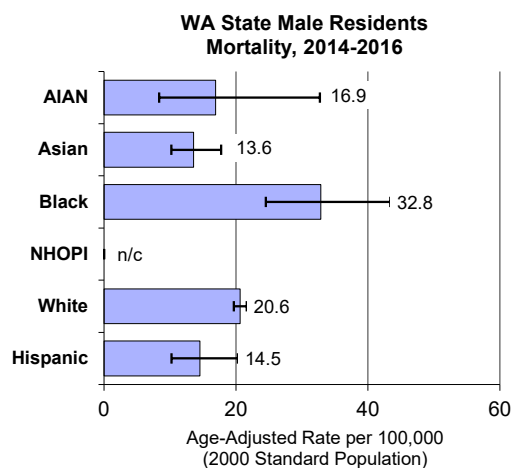
Race*/Ethnicity Group	Washington	
	New Cases Avg/Year	Age-Adjusted Rate 2000 Std Pop
AIAN ¹	32	80.2
Asian	124	57.0
Black	164	144.8
NHOPI ²	10	96.3
White	3,315	93.8
Hispanic	124	80.7



2014-2016 Washington State Male Residents

Average Annual Death and Age-Adjusted Rates

Race*/Ethnicity Group	Washington	
	Deaths Avg/Year	Age-Adjusted Rate 2000 Std Pop
AIAN ¹	5	16.9
Asian	20	13.6
Black	22	32.8
NHOPI ²	n/c	n/c
White	599	20.6
Hispanic	15	14.5



* Race groups include single race only, non-Hispanics except for the Hispanic group.

¹ AIAN: American Indian or Alaska Native

² NHOPI: Native Hawaiian or Other Pacific Islander

n/c - Rate and count not calculated when there were less than 10 cases for the period 2014-2016

Figures include in situ and invasive cancers

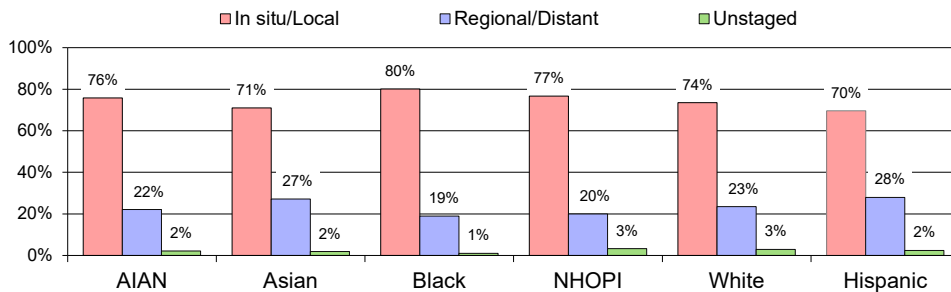
Incidence Data: Washington State Department of Health, Washington State Cancer Registry, released in January 2019.

Mortality Data: Washington State Department of Health, Center for Health Statistics, released in April 2018.

Prostate

2014-2016 Washington State Male Residents

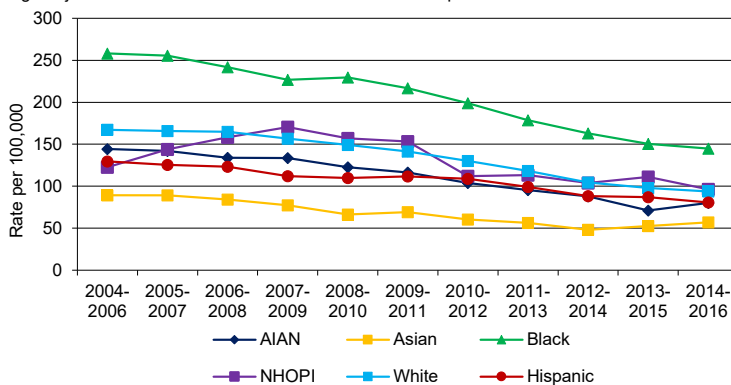
Stage At Diagnosis^{*,1,2}



n/c Total number of cases < 15

2004-2016 Washington State Male Residents Incidence Rates Trends^{*,1,2}

Age-adjusted rate standardized to 2000 US Standard Population



For prostate cancer age-adjusted incidence rates have changed as follows.

AIAN: Rates decreased sharply by 5.8% per year from 2004 to 2016.

Asian: Rates decreased sharply by 4.7% per year from 2004 to 2016.

Black: Rates decreased sharply by 5.5% per year from 2004 to 2016.

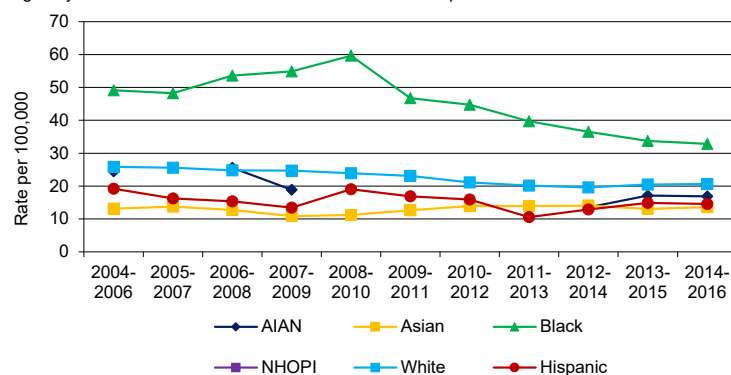
NHOPI: Rates remained level from 2004 to 2016.

White: Rates remained level from 2004 to 2010; decreased sharply by 10.6% per year from 2010 to 2014; remained level since 2014.

Hispanic: Rates decreased sharply by 4.6% per year from 2004 to 2016.

2004-2016 Washington State Male Residents Mortality Rates Trends^{*,1,2}

Age-adjusted rate standardized to 2000 US Standard Population



For prostate cancer age-adjusted mortality rates have changed as follows.

AIAN: Trends in rates from 2004 to 2016 could not be assessed due to small numbers of deaths.

Asian: Rates remained level from 2004 to 2016.

Black: Rates decreased sharply by 4.2% per year from 2004 to 2016.

NHOPI: Trends in rates from 2004 to 2016 could not be assessed due to small numbers of deaths.

White: Rates remained level from 2004 to 2009; remained level from 2009 to 2012; remained level from 2012 to 2016.

Hispanic: Rates remained level from 2004 to 2016.

[†] Rates not calculated or displayed when there were less than 10 cases for the time period.

^{*} Race groups include single race only, non-Hispanics except for the Hispanic group.

¹ AIAN: American Indian or Alaska Native

² NHOPI: Native Hawaiian or Other Pacific Islander

Incidence Data: Washington State Department of Health, Washington State Cancer Registry, released in January 2019.

Mortality Data: Washington State Department of Health, Center for Health Statistics, released in April 2018.

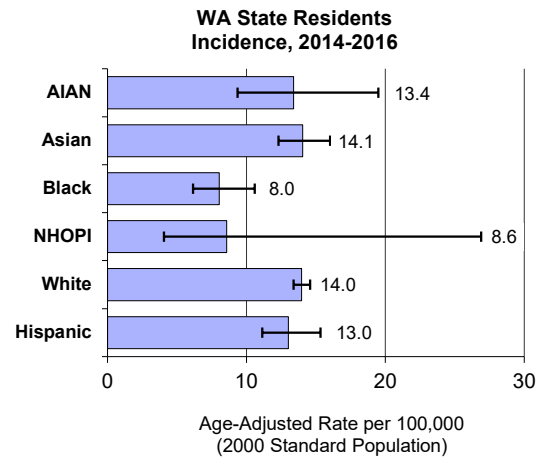
Thyroid

DATA DEFINITIONS: Incidence data were obtained from the Washington State Cancer Registry using primary site ICD-0-3 code C73.9, excluding histology codes 9140, 9050-9055, 9590-9992. Death data were obtained from Washington State death certificates using the underlying cause of death ICD-9 code 193 (1992-1998), ICD-10 code C73 (1999-2016).

2014-2016 Washington State Residents

Average Annual Incidence and Age-Adjusted Rates

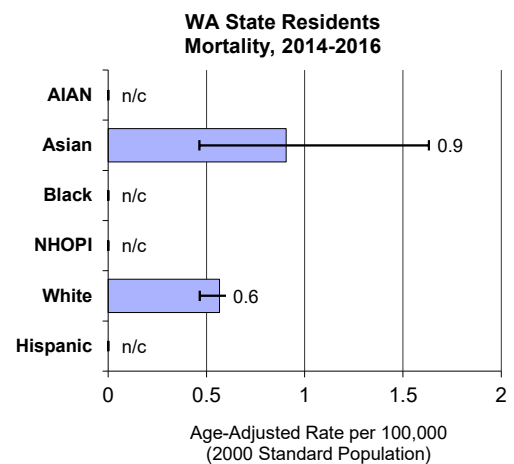
Race*/Ethnicity Group	Washington	
	New Cases Avg/Year	Age-Adjusted Rate 2000 Std Pop
AIAN ¹	13	13.4
Asian	81	14.1
Black	21	8.0
NHOPI ²	3	8.6
White	793	14.0
Hispanic	76	13.0



2014-2016 Washington State Residents

Average Annual Death and Age-Adjusted Rates

Race*/Ethnicity Group	Washington	
	Deaths Avg/Year	Age-Adjusted Rate 2000 Std Pop
AIAN ¹	n/c	n/c
Asian	4	0.9
Black	n/c	n/c
NHOPI ²	n/c	n/c
White	39	0.6
Hispanic	n/c	n/c



* Race groups include single race only, non-Hispanics except for the Hispanic group.

¹ AIAN: American Indian or Alaska Native

² NHOPI: Native Hawaiian or Other Pacific Islander

n/c - Rate and count not calculated when there were less than 10 cases for the period 2014-2016

Figures include in situ and invasive cancers

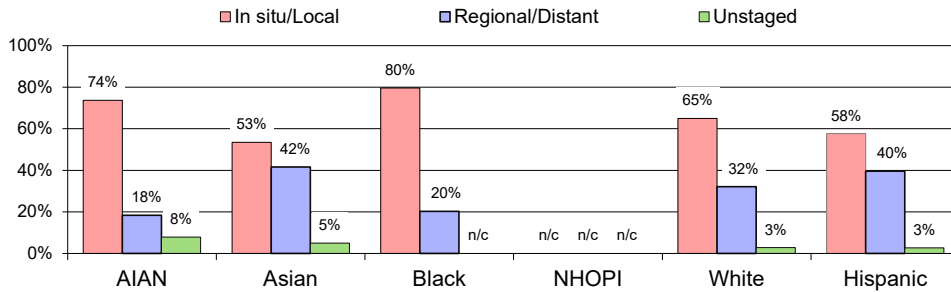
Incidence Data: Washington State Department of Health, Washington State Cancer Registry, released in January 2019.

Mortality Data: Washington State Department of Health, Center for Health Statistics, released in April 2018.

Thyroid

2014-2016 Washington State Residents

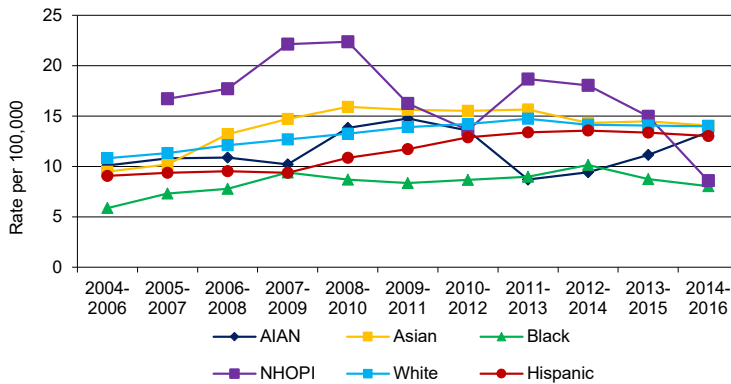
Stage At Diagnosis^{*,1,2}



n/c Total number of cases < 15

2004-2016 Washington State Residents Incidence Rates Trends^{*,1,2}

Age-adjusted rate standardized to 2000 US Standard Population



For thyroid cancer age-adjusted incidence rates have changed as follows.

AIAN: Rates remained level from 2004 to 2016.

Asian: Rates increased sharply by 19.7% per year from 2004 to 2008; remained level since 2008.

Black: Rates remained level from 2004 to 2016.

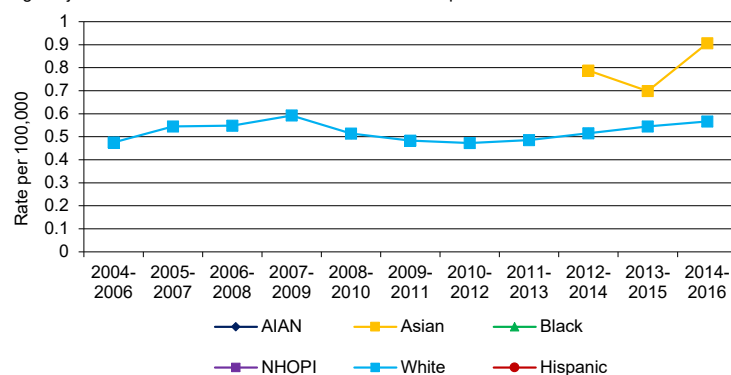
NHOPI: Trends in rates from 2004 to 2016 could not be assessed due to small numbers of new cases.

White: Rates increased sharply by 5.3% per year from 2004 to 2011; remained level since 2011.

Hispanic: Rates increased sharply by 4.4% per year from 2004 to 2016.

2004-2016 Washington State Residents Mortality Rates Trends^{*,1,2}

Age-adjusted rate standardized to 2000 US Standard Population



For thyroid cancer age-adjusted mortality rates have changed as follows.

AIAN: Trends in rates from 2004 to 2016 could not be assessed due to small numbers of deaths.

Asian: Trends in rates from 2004 to 2016 could not be assessed due to small numbers of deaths.

Black: Trends in rates from 2004 to 2016 could not be assessed due to small numbers of deaths.

NHOPI: Trends in rates from 2004 to 2016 could not be assessed due to small numbers of deaths.

White: Rates remained level from 2004 to 2016.

Hispanic: Trends in rates from 2004 to 2016 could not be assessed due to small numbers of deaths.

[†] Rates not calculated or displayed when there were less than 10 cases for the time period.

^{*} Race groups include single race only, non-Hispanics except for the Hispanic group.

¹ AIAN: American Indian or Alaska Native

² NHOPI: Native Hawaiian or Other Pacific Islander

Incidence Data: Washington State Department of Health, Washington State Cancer Registry, released in January 2019.

Mortality Data: Washington State Department of Health, Center for Health Statistics, released in April 2018.