

**Source Water Assessment Program (SWAP)  
Mapping Application**

Submit questions, comments and change requests to:  
Nikki Guillot, Source Water Protection Manager  
Washington State Department of Health  
Office of Drinking Water  
Phone: (360) 236-3114  
Email: [nikki.guillot@doh.wa.gov](mailto:nikki.guillot@doh.wa.gov)

For technical support using this application email [dohdhtsgis@doh.wa.gov](mailto:dohdhtsgis@doh.wa.gov)

For more information visit <https://doh.wa.gov/community-and-environment/drinking-water/source-water/source-water-protection>

Data Sources:

<b>Layer</b>	<b>Source</b>	<b>Refresh Rate</b>
Group A Time of Travel	DOH	Mondays at 6am
Surface Water Protection Areas	DOH	Mondays at 6am
Group B Time of Travel	DOH	Mondays at 6am
Service Areas	DOH	Mondays at 6am
Potential Contaminants	ECY	Mondays at 6am
Large on-site Sewage Systems	DOH	Real-time
Township, Range, Section	DNR	N/A last updated 2010
Water Resource Inventory Areas	ECY	N/A last updated 2012
Counties	OFM	N/A last updated 2010

Additional details are provided using the “Interactive Help”.

# Source Water Assessment Program (SWAP) Mapping Application

- Data
- Legend
- Clear
- Buffer
- County
- Measure
- Print
- Help
- [More Help / Links](#)
- Auto Pan Map

- Turn layers on/off
- Display a legend
- Clear graphics/selections
- Buffer a clicked point

- Display interactive help
- Create PDF for printing
- Measure
- Zoom to a county

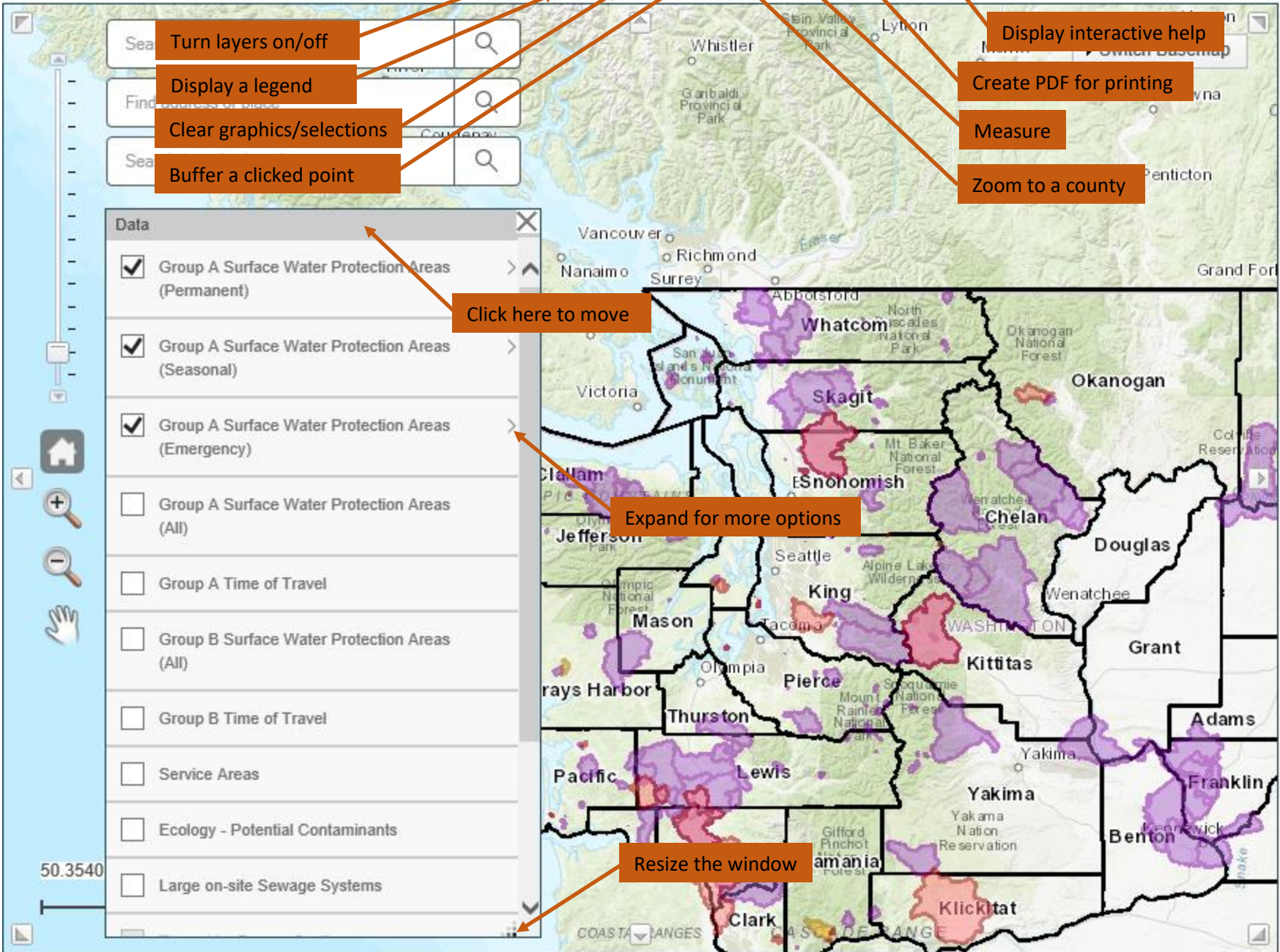
**Data**

- Group A Surface Water Protection Areas (Permanent)
- Group A Surface Water Protection Areas (Seasonal)
- Group A Surface Water Protection Areas (Emergency)
- Group A Surface Water Protection Areas (All)
- Group A Time of Travel
- Group B Surface Water Protection Areas (All)
- Group B Time of Travel
- Service Areas
- Ecology - Potential Contaminants
- Large on-site Sewage Systems

Click here to move

Expand for more options

Resize the window





# Source Water Assessment Program (SWAP) Mapping Application

- Data
- Legend
- Clear
- Buffer
- County
- Measure
- Print
- Help
- More Help / Links
- Auto Pan Map

Search by System Name or ID

Find address or place

Search for a Surface Source

### Legend

- 6 Month Time of Travel
- 1 Year Time of Travel
- 5 Year Time of Travel
- 10 Year Time of Travel
- Assigned Time of Travel

Close

After clicking the map, center the display

Change the background base map

Switch Basemap

Page through features if multiple are found

### 10 Year Modelled TOT

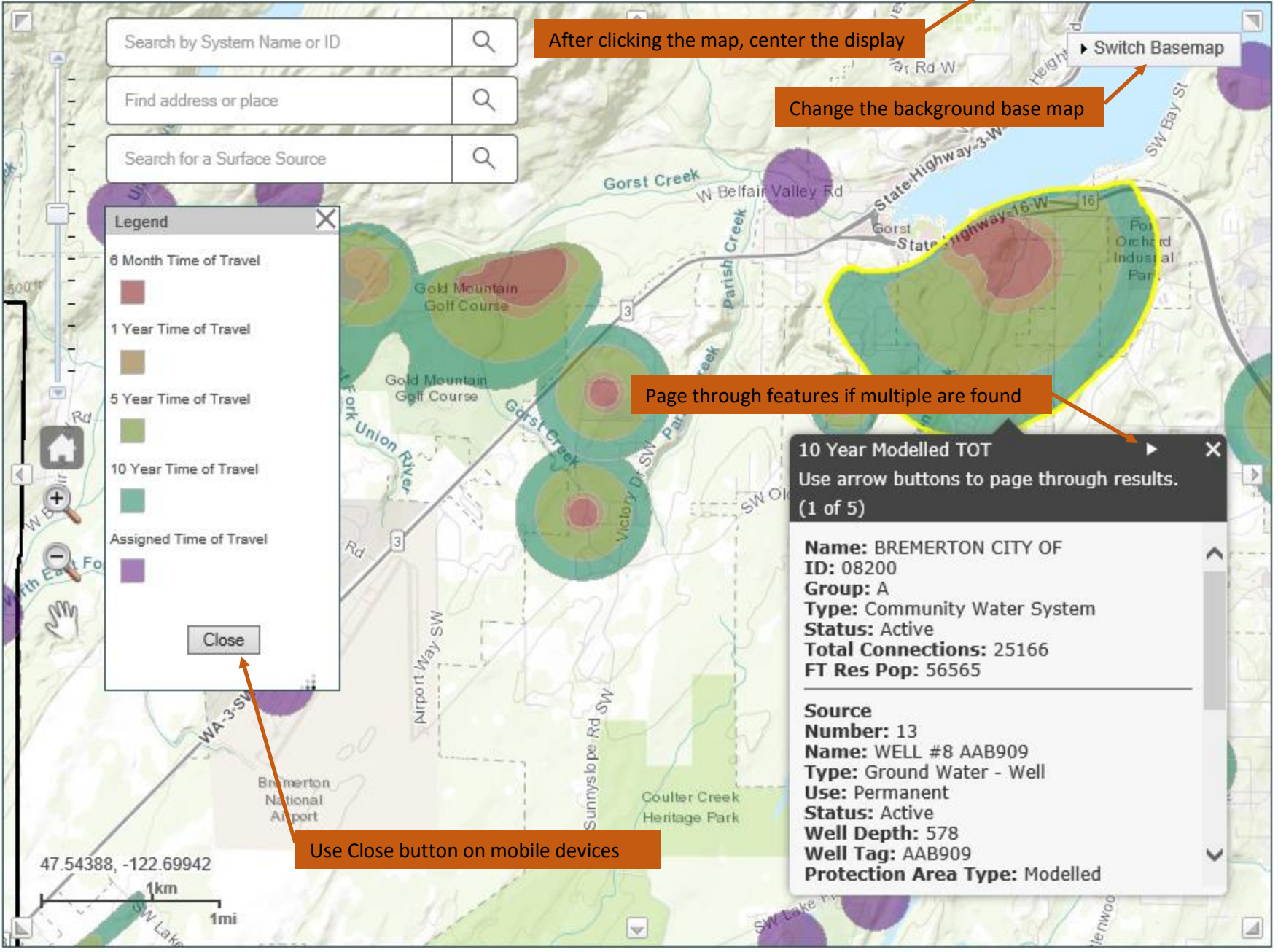
Use arrow buttons to page through results.  
(1 of 5)

**Name:** BREMERTON CITY OF  
**ID:** 08200  
**Group:** A  
**Type:** Community Water System  
**Status:** Active  
**Total Connections:** 25166  
**FT Res Pop:** 56565

---

**Source Number:** 13  
**Name:** WELL #8 AAB909  
**Type:** Ground Water - Well  
**Use:** Permanent  
**Status:** Active  
**Well Depth:** 578  
**Well Tag:** AAB909  
**Protection Area Type:** Modelled

Use Close button on mobile devices



# Source Water Assessment Program (SWAP) Mapping Application

Data Legend Clear Buffer County Measure Print Help

[More Help / Links](#)  
 Auto Pan Map

